

RETLIF TESTING LABORATORIES

TABULAR DATA SHEET

Test Method:	RF Power Output		
Customer:	Cellular Specialties, Inc.	Job No:	R-5185N-1
Test Sample:	Digital Repeater		
Model No:	CSI-DSP85-PSS8	Serial No:	N/A
Test Specification:	FCC Part 2 Paragraph: 2.1046		
Operating Mode:	Amplifying input signal		
Technician:	M.Seamans	Date:	7/24/2009
Notes:	Low Band - Uplink Frequency Range: 806-824 MHz Downlink Frequency Range: 851-869 MHz RF Power output data taken from the two tone test combined power Modulation Type: TDMA		

[illegible]

RETLIF TESTING LABORATORIES

EMISSIONS DATA SHEET

Test Method:	Occupied Bandwidth		
Customer:	Cellular Specialties, Inc.	Test Sample:	Digital Repeater
Model No:	CSI-DSP85-PSS8	Serial No:	N/A
Test Specification:	FCC Part 2	Paragraph:	2.1049
Operating Mode:	Amplifying input signal		
Notes:	TDMA - Uplink - Output at 815 MHz		
Job No:	R-5185N-1		Technician:
		M.Seamans	Date:
		7/24/2009	

* Agilent 10:48:53 Jul 24, 2009

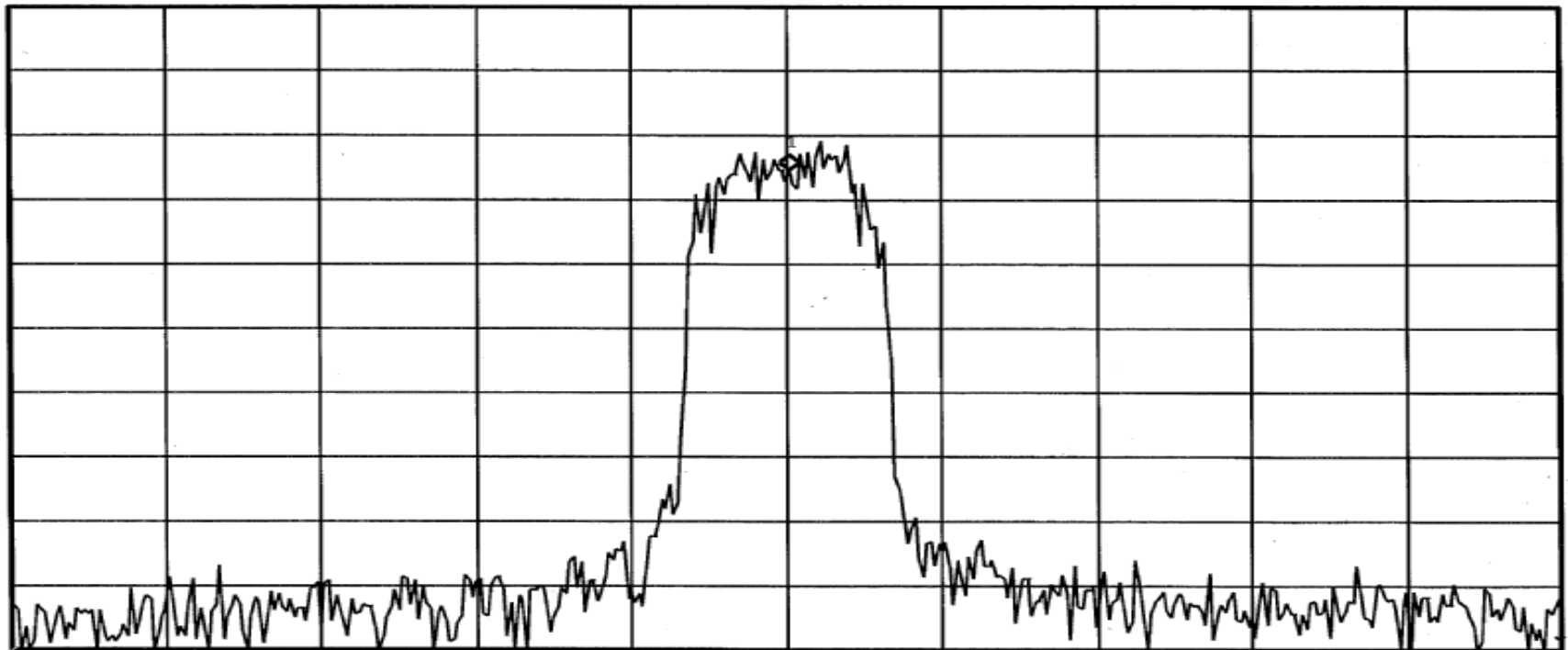
Mkr1 815.000625 MHz
9.491 dBm

Ref 35.06 dBm

#Atten 15 dB

Peak
Log
10
dB/
Offst
30.1
dB

V1 S2
S3 FC
AA



Center 815 MHz

#Res BW 300 Hz

#VBW 1 kHz

Span 250 kHz

Sweep 11.13 s (401 pts)

RETLIF TESTING LABORATORIES

EMISSIONS DATA SHEET

Test Method:	Occupied Bandwidth		
Customer:	Cellular Specialties, Inc.	Test Sample:	Digital Repeater
Model No:	CSI-DSP85-PSS8	Serial No:	N/A
Test Specification:	FCC Part 2	Paragraph:	2.1049
Operating Mode:	Amplifying input signal		
Notes:	TDMA - Uplink - Input at 815 MHz		
Job No:	R-5185N-1		Technician:
		M.Seamans	Date:
		7/24/2009	

Agilent 10:52:00 Jul 24, 2009

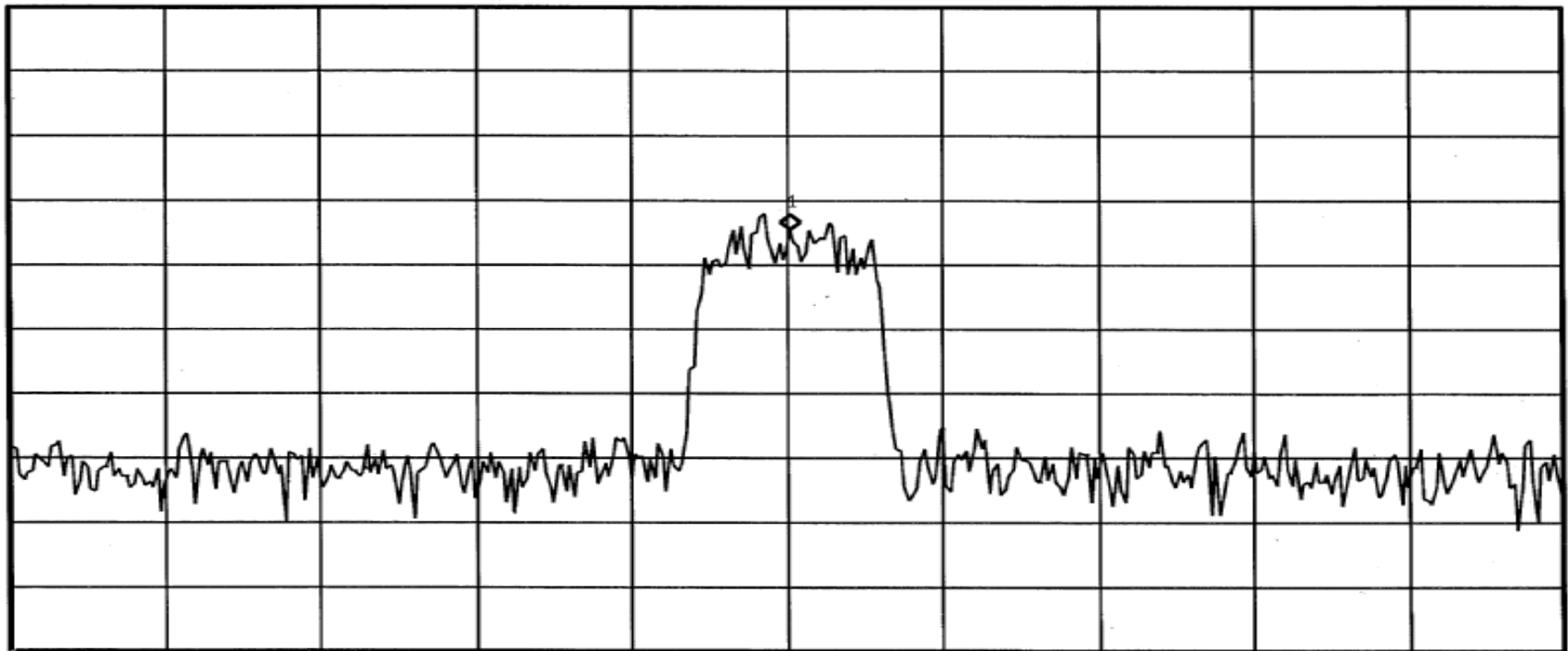
Mkr1 815.000625 MHz
- 69.54 dBm

Ref -35 dBm

#Atten 15 dB

Peak
Log
10
dB/

V1 S2
S3 FC
AA



Center 815 MHz
#Res BW 300 Hz

#VBW 1 kHz

Span 250 kHz
Sweep 11.13 s (401 pts)

RETLIF TESTING LABORATORIES

EMISSIONS DATA SHEET

Test Method:	Occupied Bandwidth		
Customer:	Cellular Specialties, Inc.	Test Sample:	Digital Repeater
Model No:	CSI-DSP85-PSS8	Serial No:	N/A
Test Specification:	FCC Part 2	Paragraph:	2.1049
Operating Mode:	Amplifying input signal		
Notes:	TDMA - Downlink - Output at 860 MHz		
Job No:	R-5185N-1		Technician:
		M.Seamans	Date:
		7/24/2009	

Agilent 10:36:26 Jul 24, 2009

Mkr1 860.000625 MHz
8.928 dBm

Ref 35 dBm

Atten 15 dB

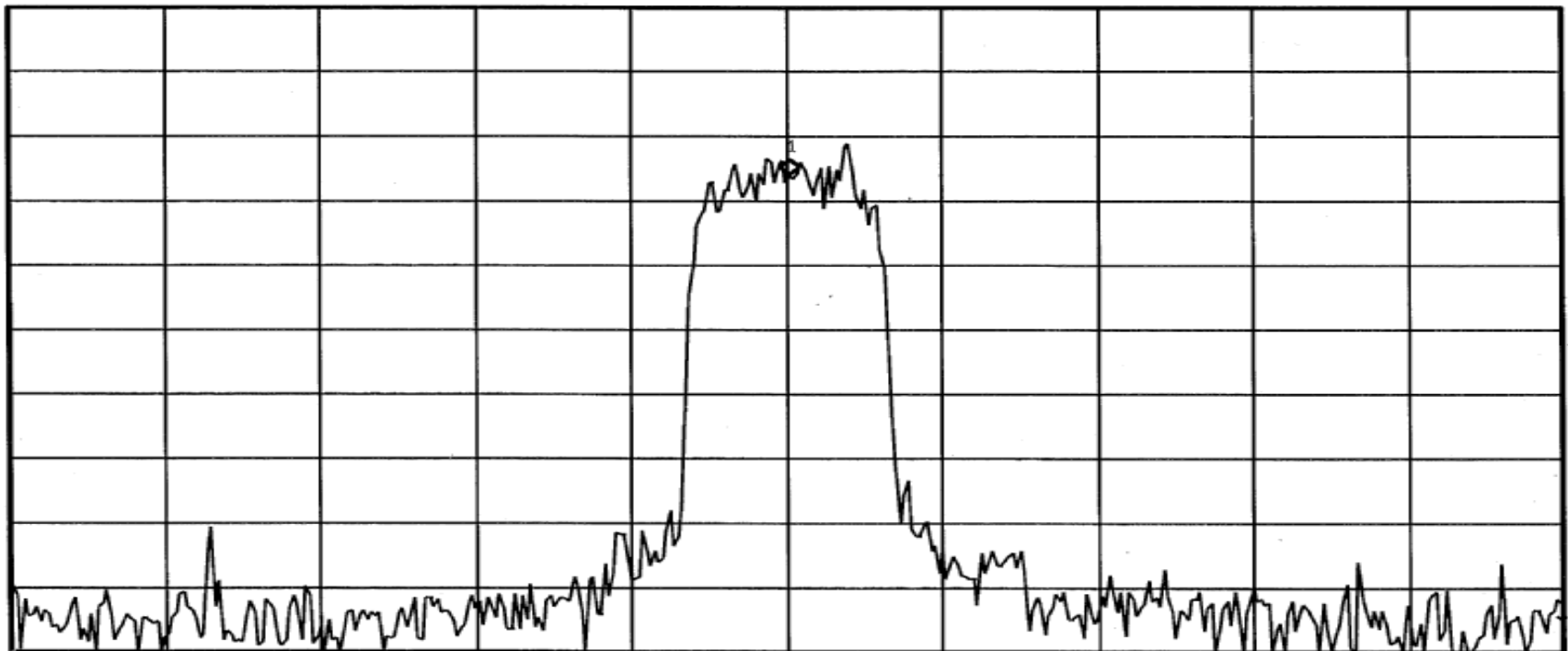
Peak
Log
10
dB/
Offst
30.1
dB

V1 S2
S3 FC
AA

Center 860 MHz
#Res BW 300 Hz

#VBW 1 kHz

Span 250 kHz
Sweep 11.13 s (401 pts)



RETLIF TESTING LABORATORIES

EMISSIONS DATA SHEET

Test Method:	Occupied Bandwidth		
Customer:	Cellular Specialties, Inc.	Test Sample:	Digital Repeater
Model No:	CSI-DSP85-PSS8	Serial No:	N/A
Test Specification:	FCC Part 2	Paragraph:	2.1049
Operating Mode:	Amplifying input signal		
Notes:	TDMA - Downlink - Input at 860 MHz		
Job No:	R-5185N-1		Technician:
		M.Seamans	Date:
		7/24/2009	

Agilent 10:40:26 Jul 24, 2009

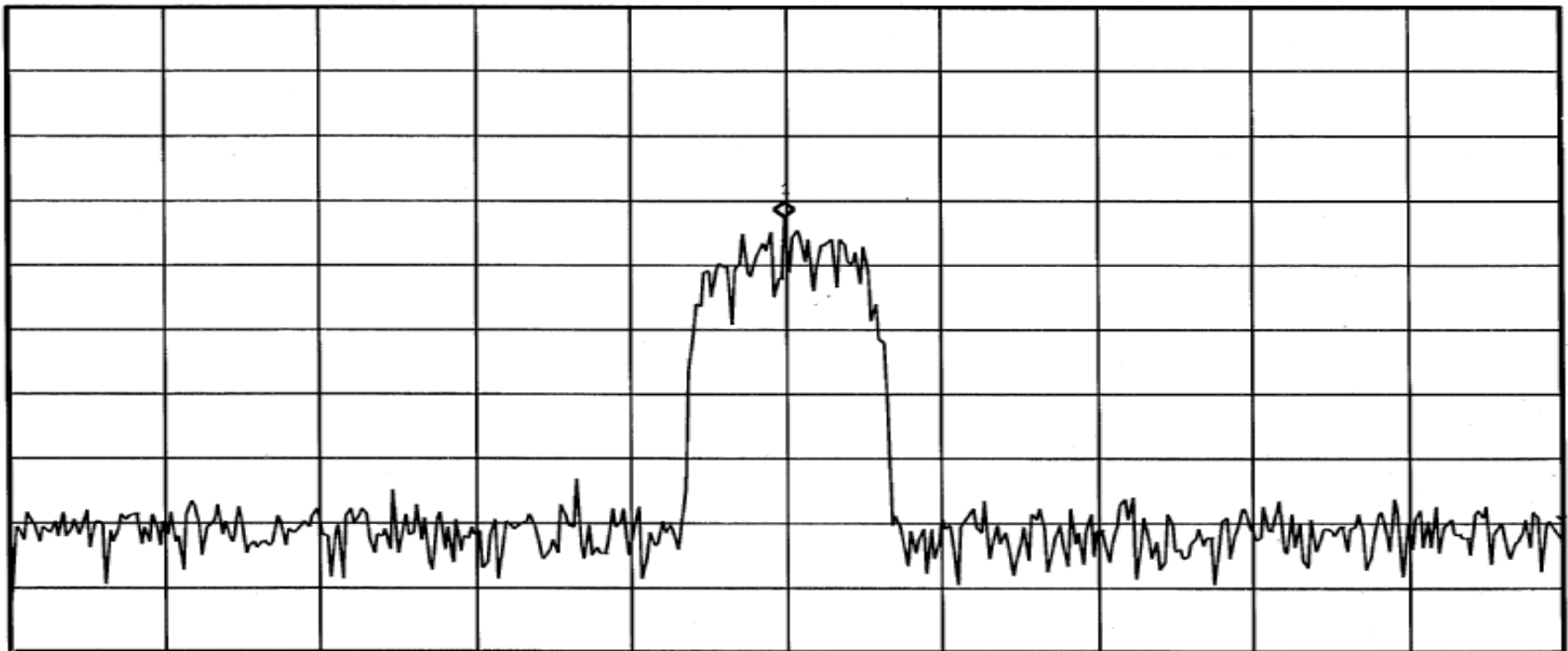
Mkr1 860.000000 MHz
-67.56 dBm

Ref -35 dBm

Atten 5 dB

Peak
Log
10
dB/

V1 S2
S3 FC
AA



Center 860 MHz
#Res BW 300 Hz

#VBW 1 kHz

Span 250 kHz
Sweep 11.13 s (401 pts)

RETLIF TESTING LABORATORIES

EMISSIONS DATA SHEET

Test Method:	Inter-modulation Characteristics		
Customer:	Cellular Specialties, Inc.	Test Sample:	Digital Repeater
Model No:	CSI-DSP85-PSS8	Serial No:	N/A
Test Specification:	FCC Part 2	Paragraph:	2.1047
Operating Mode:	Amplifying input signal		
Notes:	AMPS Band - TDMA - Downlink		
Job No:	R-5185N-1		Technician:
		M.Seamans	Date:
		7/24/2009	

Agilent

09:55:08 Jul 24, 2009

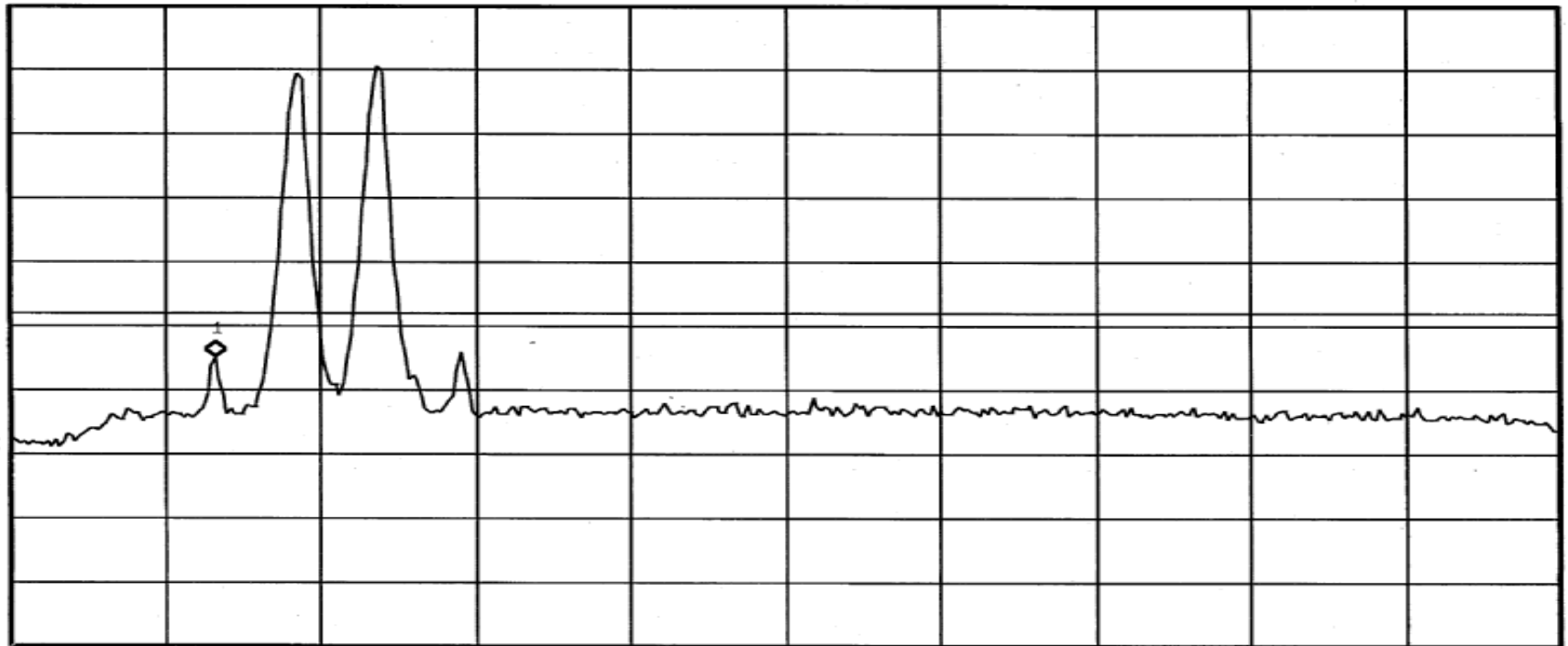
Ref 35 dBm

Atten 15 dB

Mkr1 852.5175 MHz
-19.91 dBm

Peak
Log
10
dB /
Offst
30.1
dB
DI
-13.0
dBm

M1 S2
S3 FC
AA



Start 850 MHz

Res BW 120 kHz

VBW 300 kHz

Stop 869 MHz

Sweep 4 ms (401 pts)

RETLIF TESTING LABORATORIES

EMISSIONS DATA SHEET

Test Method:	Inter-modulation Characteristics		
Customer:	Cellular Specialties, Inc.	Test Sample:	Digital Repeater
Model No:	CSI-DSP85-PSS8	Serial No:	N/A
Test Specification:	FCC Part 2	Paragraph:	2.1047
Operating Mode:	Amplifying input signal		
Notes:	AMPS Band - TDMA - Downlink		
Job No:	R-5185N-1		Technician:
		M.Seamans	Date:
		7/24/2009	

Agilent

09:56:45 Jul 24, 2009

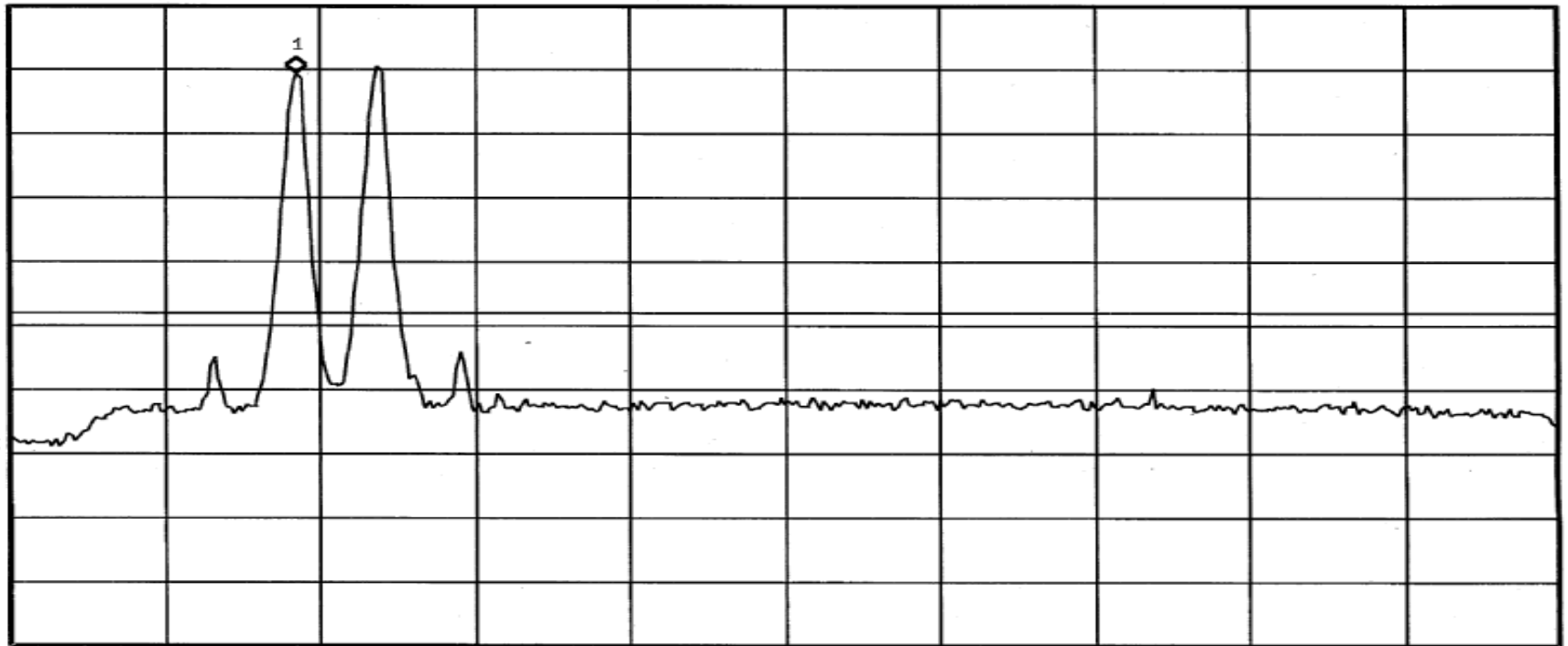
Mkr1 853.5150 MHz
24.57 dBm

Ref 35 dBm

Atten 15 dB

Peak
Log
10
dB/
Offst
30.1
dB
DI
-13.0
dBm

M1 S2
S3 FC
AA



Start 850 MHz

Res BW 120 kHz

VBW 300 kHz

Stop 869 MHz

Sweep 4 ms (401 pts)

RETLIF TESTING LABORATORIES

EMISSIONS DATA SHEET

Test Method:	Inter-modulation Characteristics		
Customer:	Cellular Specialties, Inc.	Test Sample:	Digital Repeater
Model No:	CSI-DSP85-PSS8	Serial No:	N/A
Test Specification:	FCC Part 2	Paragraph:	2.1047
Operating Mode:	Amplifying input signal		
Notes:	AMPS Band - TDMA - Downlink		
Job No:	R-5185N-1		Technician:
		M.Seamans	Date:
		7/24/2009	

Agilent

09:58:16 Jul 24, 2009

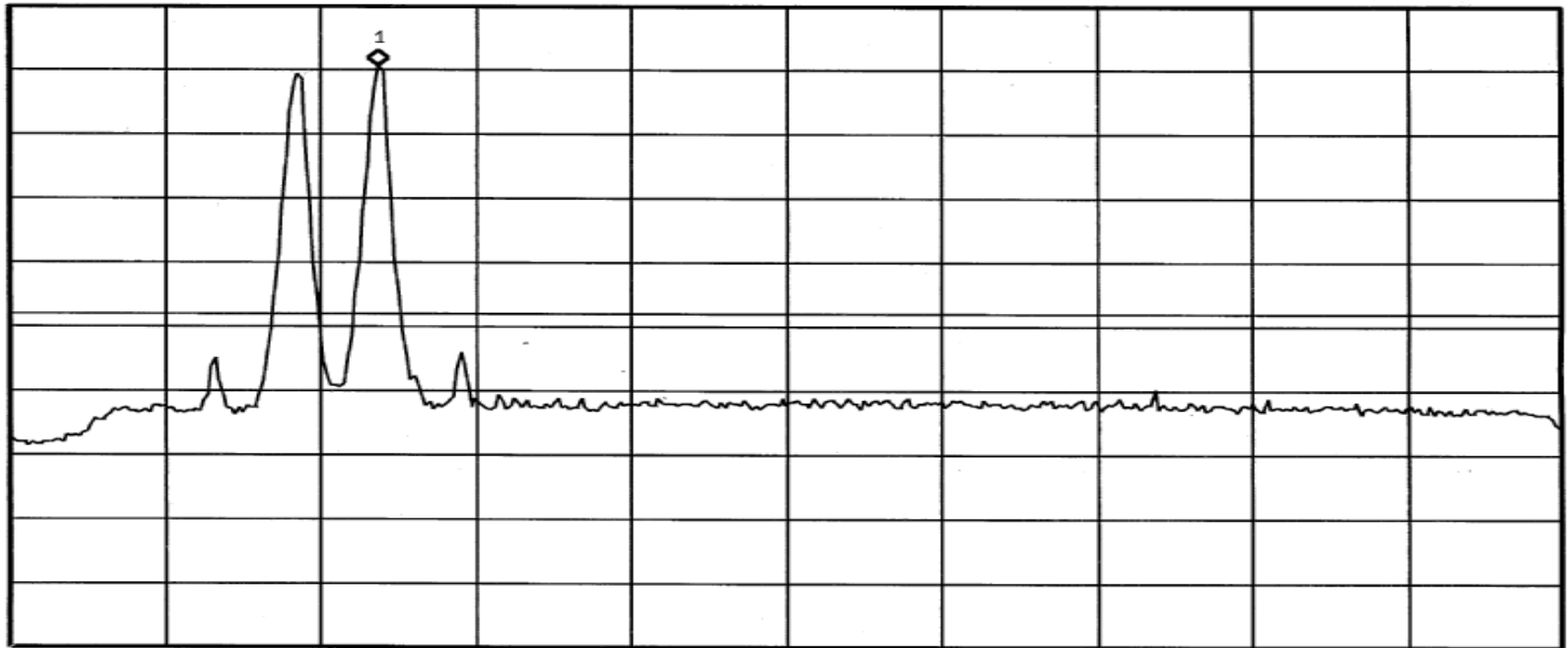
Ref 35 dBm

Atten 15 dB

Mkr1 854.5125 MHz
25.47 dBm

Peak
Log
10
dB/
Offst
30.1
dB
DI
-13.0
dBm

M1 S2
S3 FC
AA



Start 850 MHz

Res BW 120 kHz

VBW 300 kHz

Stop 869 MHz

Sweep 4 ms (401 pts)

RETLIF TESTING LABORATORIES

EMISSIONS DATA SHEET

Test Method:	Inter-modulation Characteristics		
Customer:	Cellular Specialties, Inc.	Test Sample:	Digital Repeater
Model No:	CSI-DSP85-PSS8	Serial No:	N/A
Test Specification:	FCC Part 2	Paragraph:	2.1047
Operating Mode:	Amplifying input signal		
Notes:	AMPS Band - TDMA - Downlink		
Job No:	R-5185N-1		Technician:
		M.Seamans	Date:
		7/24/2009	

Agilent

09:59:48 Jul 24, 2009

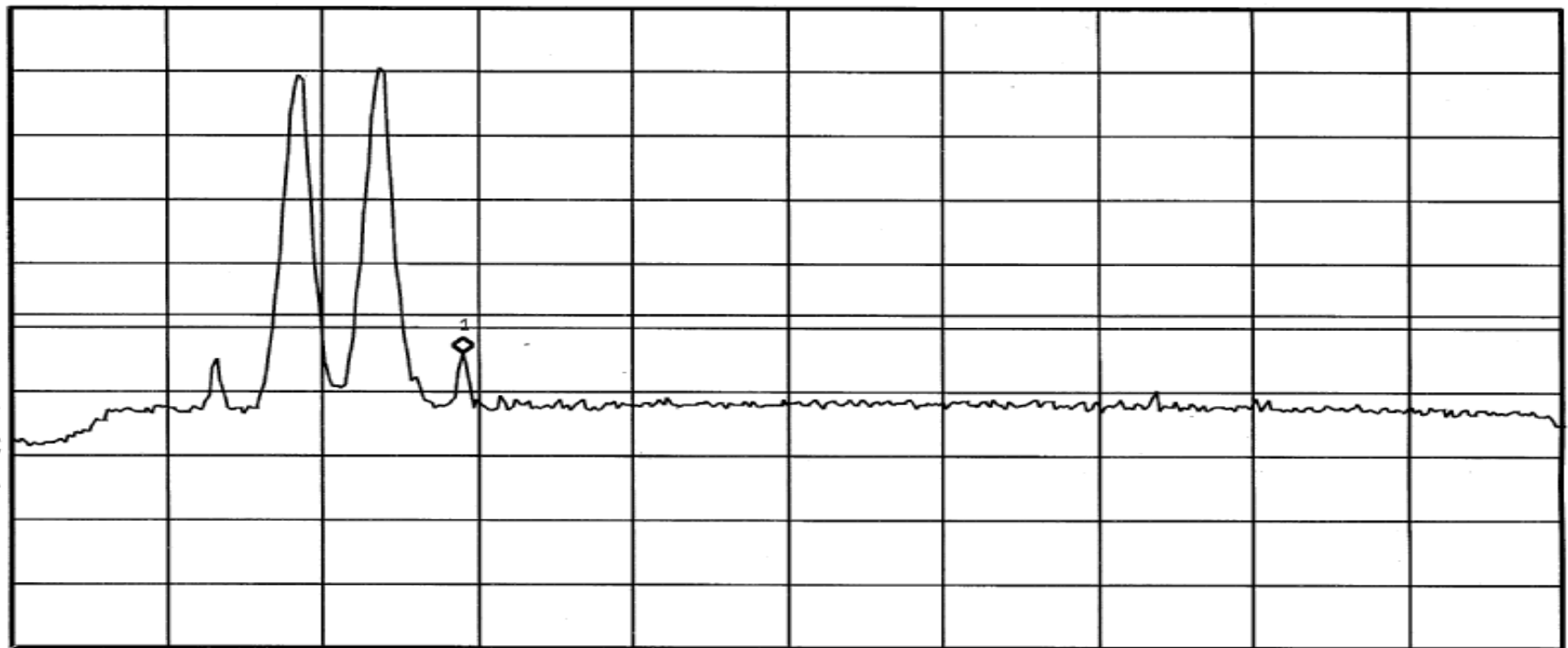
Mkr1 855.5100 MHz
-19.04 dBm

Ref 35 dBm

Atten 15 dB

Peak
Log
10
dB/
Offst
30.1
dB
DI
-13.0
dBm

M1 S2
S3 FC
AA



Start 850 MHz

Res BW 120 kHz

VBW 300 kHz

Stop 869 MHz

Sweep 4 ms (401 pts)

RETLIF TESTING LABORATORIES

EMISSIONS DATA SHEET

Test Method:	Inter-modulation Characteristics		
Customer:	Cellular Specialties, Inc.	Test Sample:	Digital Repeater
Model No:	CSI-DSP85-PSS8	Serial No:	N/A
Test Specification:	FCC Part 2	Paragraph: 2.1047	Date: 7/24/2009
Operating Mode:	Amplifying input signal		
Notes:	AMPS Band - TDMA - Downlink		

Agilent

10:04:39 Jul 24, 2009

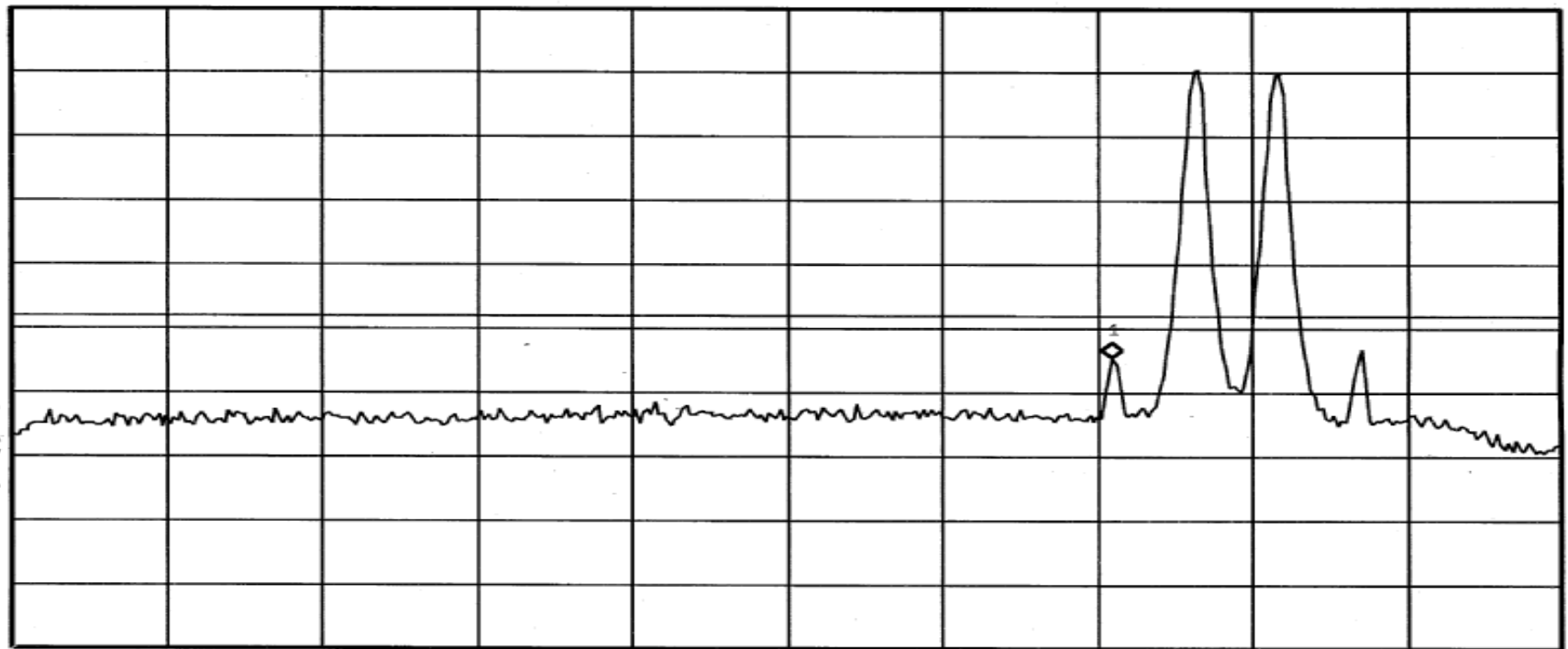
Ref 35 dBm

Atten 15 dB

Mkr1 864.4900 MHz
-19.46 dBm

Peak
Log
10
dB/
Offst
30.1
dB
DI
-13.0
dBm

V1 S2
S3 FC
AA



Start 851 MHz

Res BW 120 kHz

VBW 300 kHz

Stop 870 MHz

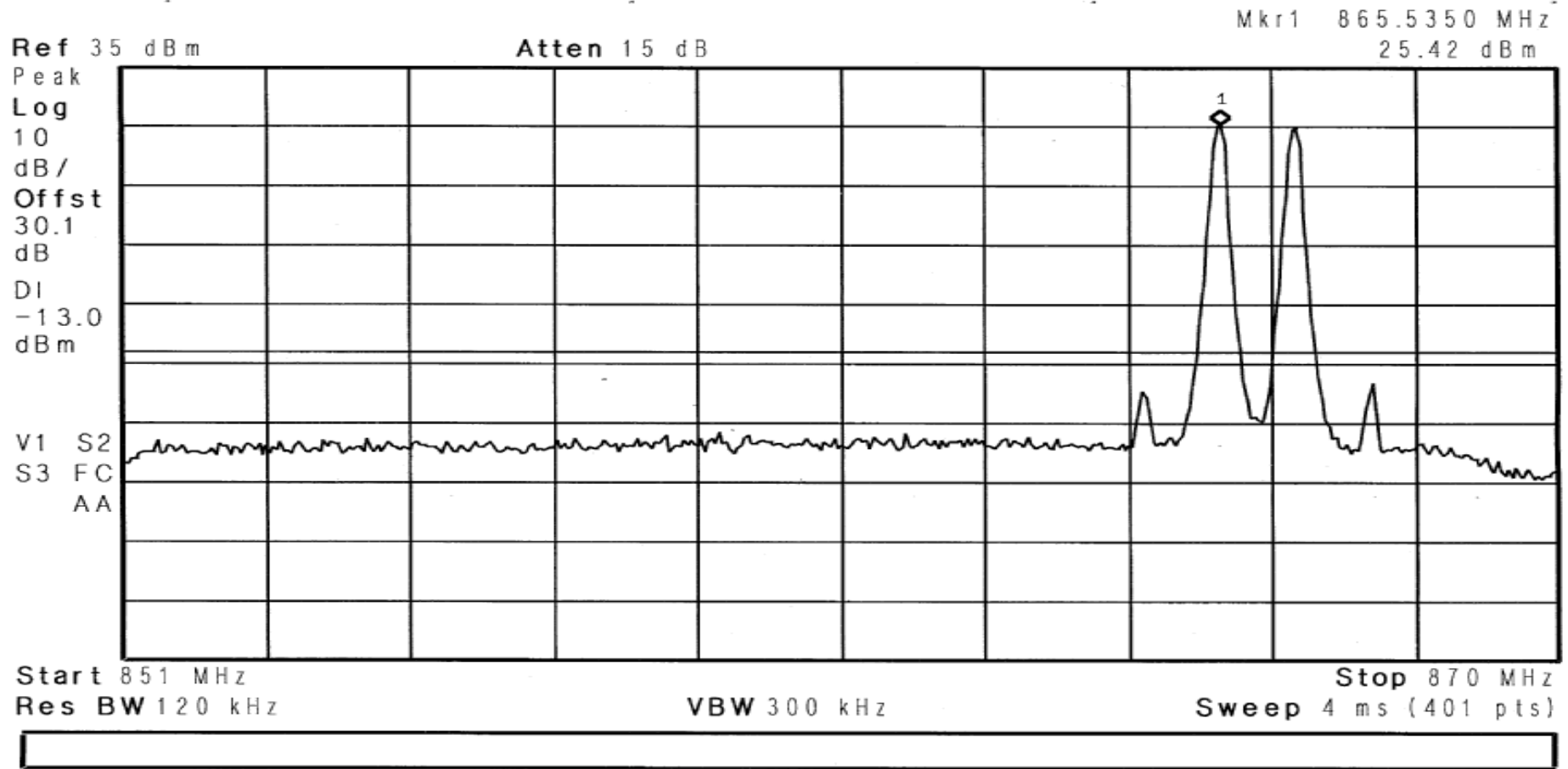
Sweep 4 ms (401 pts)

RETLIF TESTING LABORATORIES

EMISSIONS DATA SHEET

Test Method:	Inter-modulation Characteristics		
Customer:	Cellular Specialties, Inc.	Test Sample:	Digital Repeater
Model No:	CSI-DSP85-PSS8	Serial No:	N/A
Test Specification:	FCC Part 2	Paragraph:	2.1047
Operating Mode:	Amplifying input signal		
Notes:	AMPS Band - TDMA - Downlink		
Job No:	R-5185N-1		Technician:
		M.Seamans	Date:
		7/24/2009	

Agilent 10:06:15 Jul 24, 2009



RETLIF TESTING LABORATORIES

EMISSIONS DATA SHEET

Test Method:	Inter-modulation Characteristics		
Customer:	Cellular Specialties, Inc.	Test Sample:	Digital Repeater
Model No:	CSI-DSP85-PSS8	Serial No:	N/A
Test Specification:	FCC Part 2	Paragraph:	2.1047
Operating Mode:	Amplifying input signal		
Notes:	AMPS Band - TDMA - Downlink		
Job No:	R-5185N-1	Technician:	M.Seamans
Date:	7/24/2009		

* Agilent 10:07:34 Jul 24, 2009

