

RETLIF TESTING LABORATORIES

EMISSIONS DATA SHEET

Test Method:	Intermodulation Characteristics		
Customer:	Cellular Specialties, Inc.	Test Sample:	Frequency Programmable Repeater
Model No:	DSP85-1W-P	Serial No:	n/a
Test Specification:	FCC Part 2	Paragraph:	2.1047
Operating Mode:	Amplifying input signal		
Notes:	PCS Band - TDMA - Downlink		
Job No:	R-4560N		Technician:
		M.Seamans	Date:
		9/28/2006	

13:36:47 SEP 28, 2006

REF 30.0 dBm

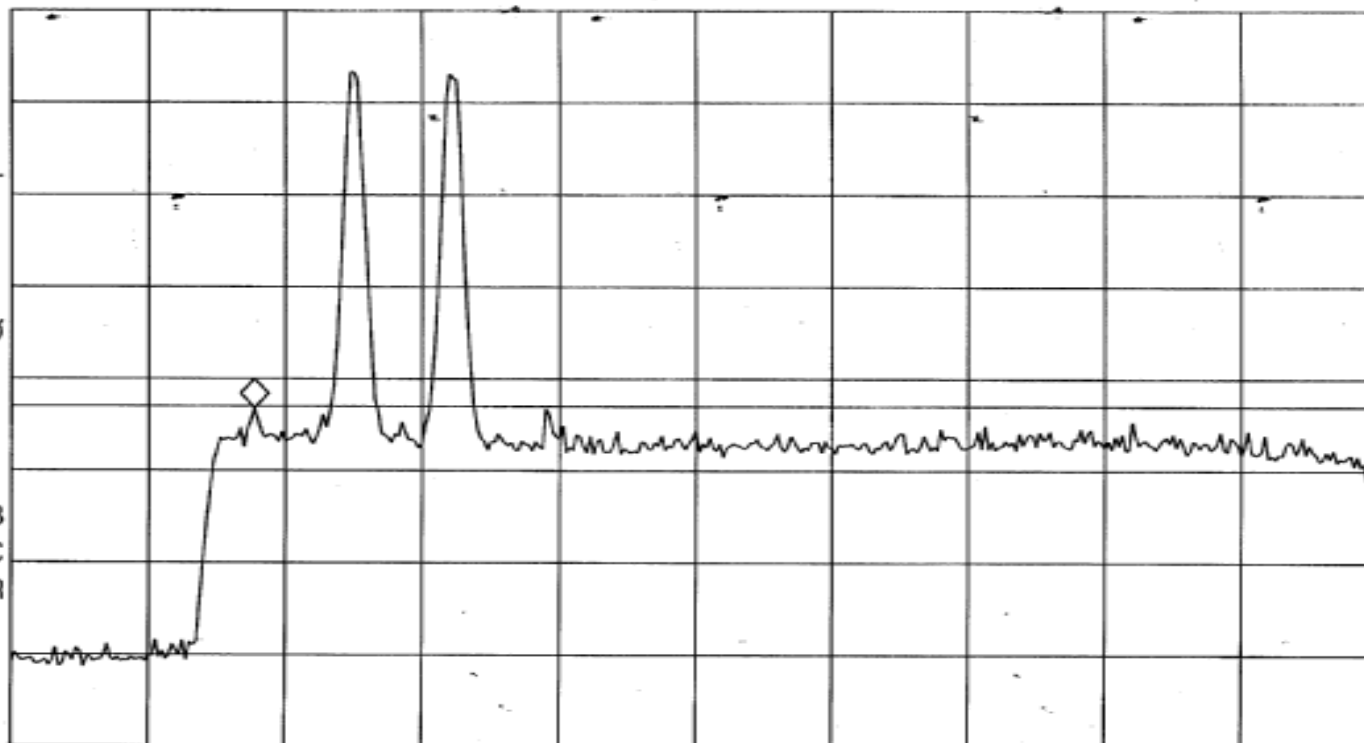
AT 10 dB

MKR 1.93243 GHz

-13.22 dBm

PEAK
LOG
10
dB/
OFFST
30.0
dB
DL
-13.0
dBm

VA SB
SC FC
CORR



START 1.92000 GHz

#RES BW 300 kHz

#VBW 1 MHz

STOP 1.99000 GHz

SWP 20.0 msec

RETLIF TESTING LABORATORIES

EMISSIONS DATA SHEET

Test Method:	Intermodulation Characteristics		
Customer:	Cellular Specialties, Inc.	Test Sample:	Frequency Programmable Repeater
Model No:	DSP85-1W-P	Serial No:	n/a
Test Specification:	FCC Part 2	Paragraph:	2.1047
Operating Mode:	Amplifying input signal		
Notes:	PCS Band - TDMA - Downlink		

13:36:14 SEP 28, 2006

REF 30.0 dBm

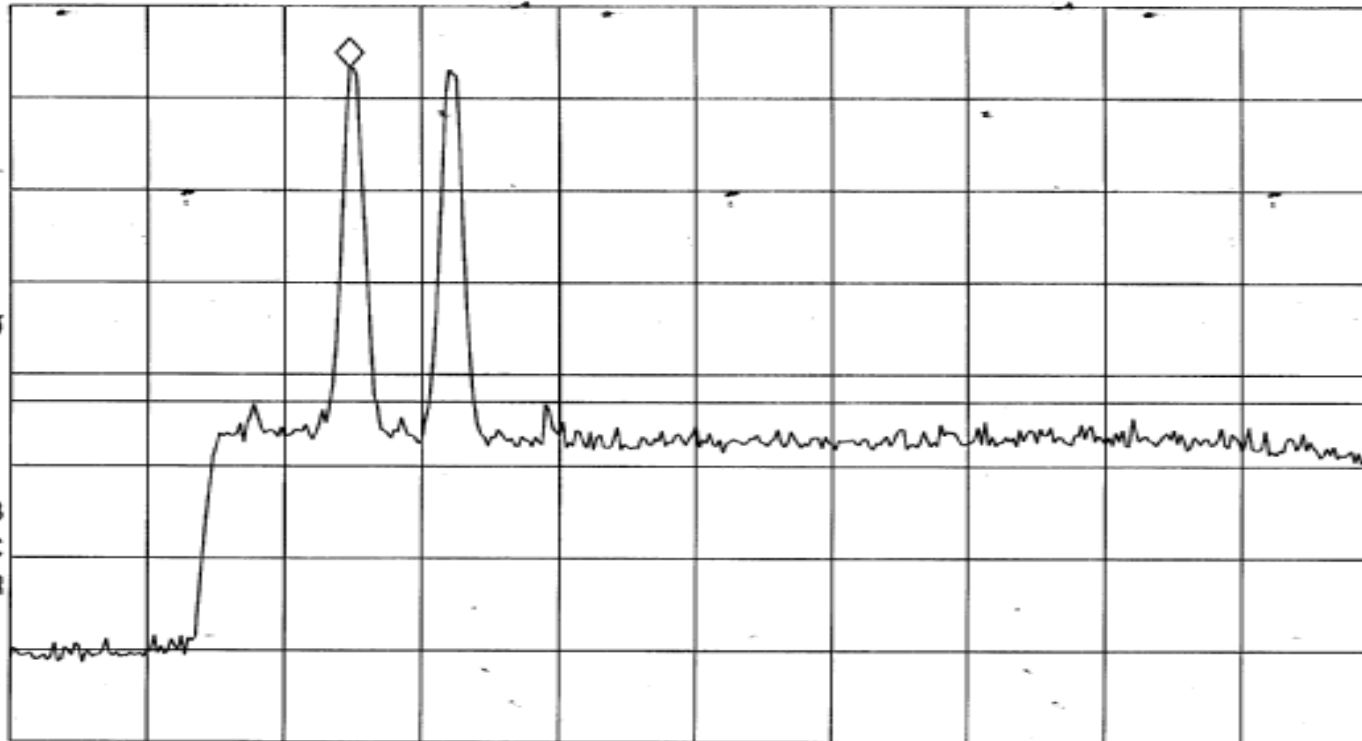
AT 10 dB

MKR 1.93733 GHz

23.33 dBm

PEAK
LOG
10
dB/
OFFST
30.0
dB
DL
-13.0
dBm

VA SB
SC FC
CORR



START 1.92000 GHz

#RES BW 300 kHz

#VBW 1 MHz

STOP 1.99000 GHz

SWP 20.0 msec

RETLIF TESTING LABORATORIES

EMISSIONS DATA SHEET

Test Method:	Intermodulation Characteristics		
Customer:	Cellular Specialties, Inc.	Test Sample:	Frequency Programmable Repeater
Model No:	DSP85-1W-P	Serial No:	n/a
Test Specification:	FCC Part 2	Paragraph:	2.1047
Operating Mode:	Amplifying input signal		
Notes:	PCS Band - TDMA - Downlink		
Job No:	R-4560N	Technician:	M.Seamans
Date:	9/28/2006		

13:36:09 SEP 28, 2006

REF 30.0 dBm

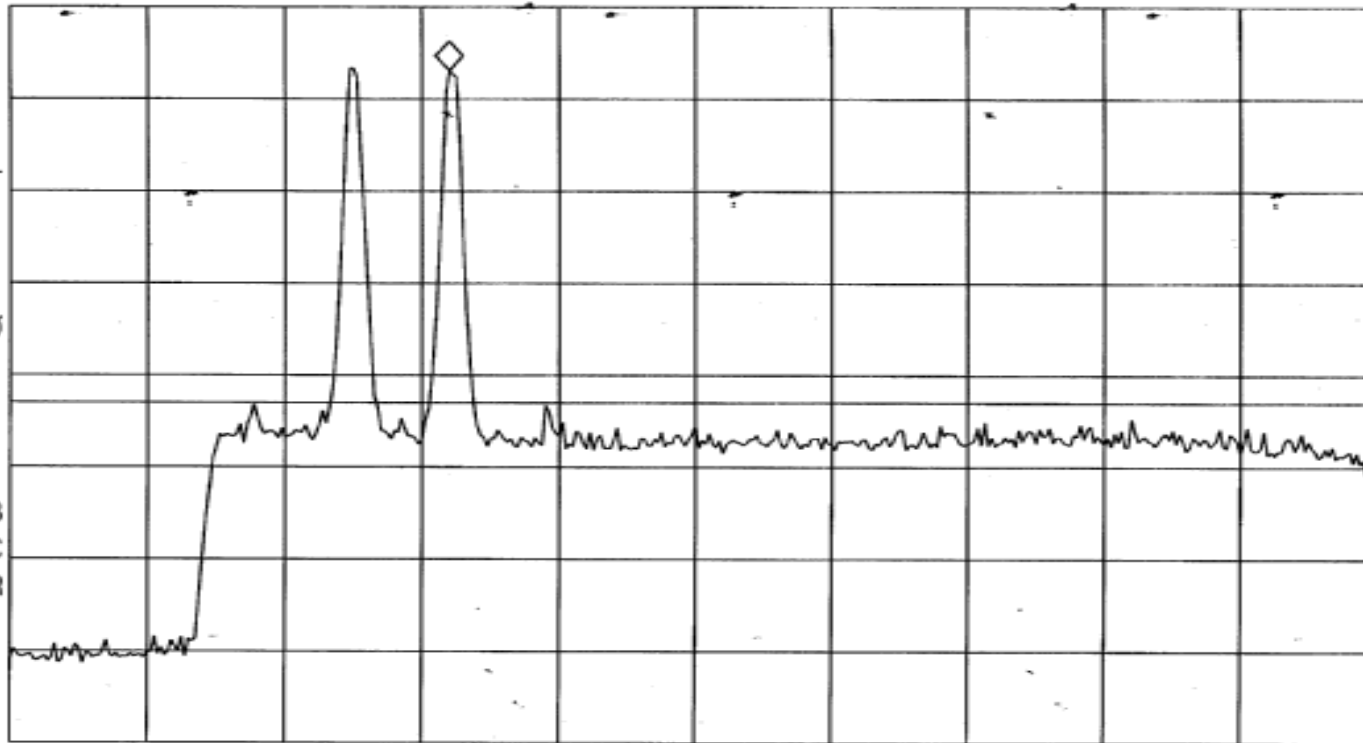
AT 10 dB

MKR 1.94240 GHz

23.08 dBm

PEAK
LOG
10
dB/
OFFST
30.0
dB
DL
-13.0
dBm

VA SB
SC FC
CORR



START 1.92000 GHz

#RES BW 300 kHz

#VBW 1 MHz

STOP 1.99000 GHz

SWP 20.0 msec

RETLIF TESTING LABORATORIES

EMISSIONS DATA SHEET

Test Method:	Intermodulation Characteristics		
Customer:	Cellular Specialties, Inc.	Test Sample:	Frequency Programmable Repeater
Model No:	DSP85-1W-P	Serial No:	n/a
Test Specification:	FCC Part 2	Paragraph:	2.1047
Operating Mode:	Amplifying input signal		
Notes:	PCS Band - TDMA - Downlink		

13: 35: 48 SEP 28, 2006

REF 30.0 dBm

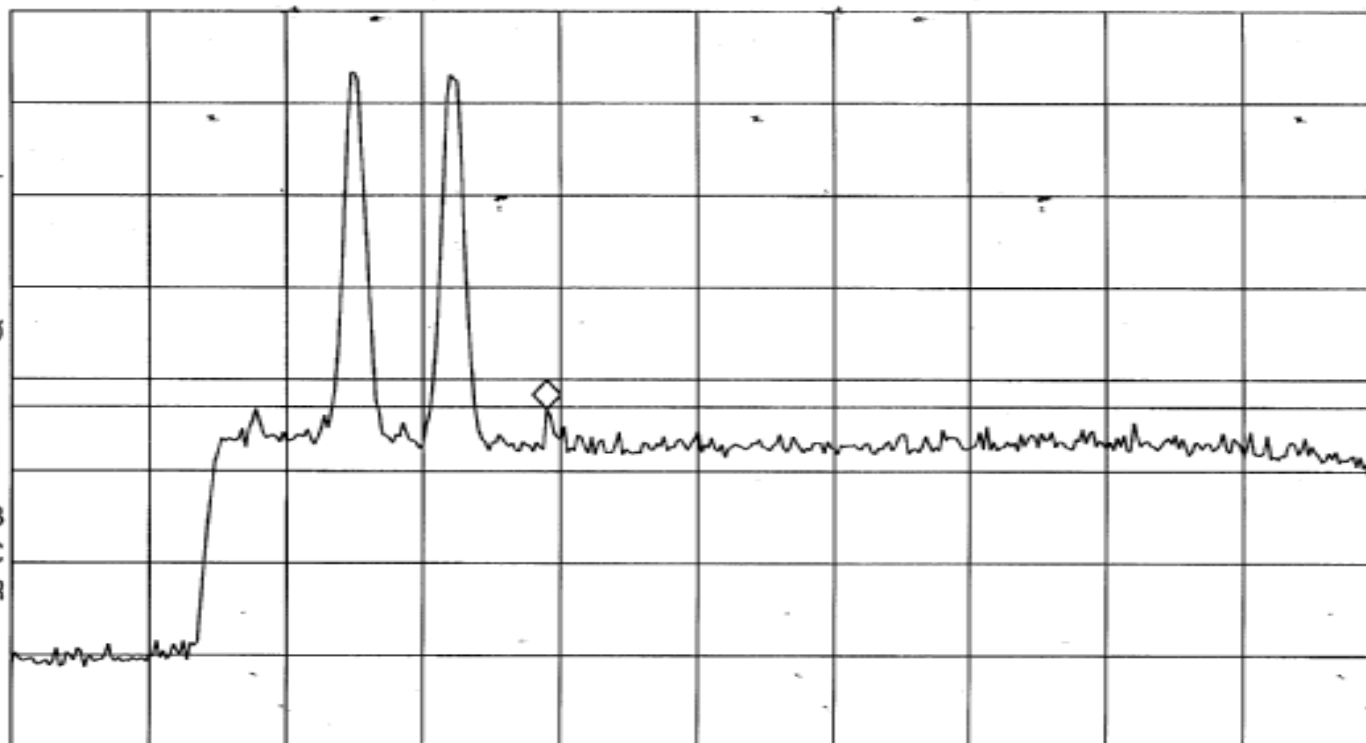
AT 10 dB

MKR 1.94730 GHz

-13.26 dBm

PEAK
LOG
10
dB/
OFFST
30.0
dB
DL
-13.0
dBm

VA SB
SC FC
CORR



START 1.92000 GHz

#RES BW 300 kHz

#VBW 1 MHz

STOP 1.99000 GHz

SWP 20.0 msec

RETLIF TESTING LABORATORIES

EMISSIONS DATA SHEET

Test Method:	Intermodulation Characteristics		
Customer:	Cellular Specialties, Inc.	Test Sample:	Frequency Programmable Repeater
Model No:	DSP85-1W-P	Serial No:	n/a
Test Specification:	FCC Part 2	Paragraph: 2.1047	Date: 9/28/2006
Operating Mode:	Amplifying input signal		
Notes:	PCS Band - TDMA - Downlink		

13:30:28 SEP 28, 2006

REF 30.0 dBm

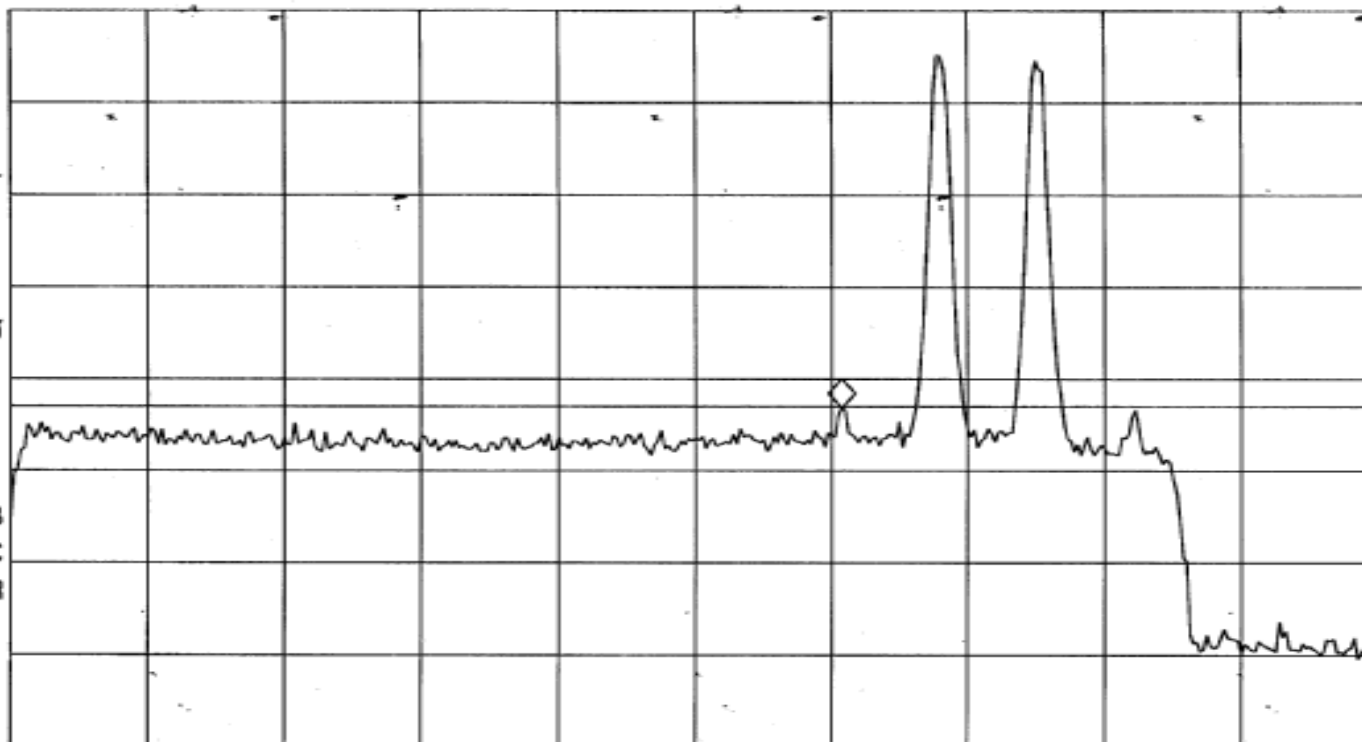
AT 10 dB

MKR 1.97253 GHz

-13.17 dBm

PEAK
LOG
10
dB/
OFFST
30.0
dB
DL
-13.0
dBm

VA SB
SC FC
CORR



START 1.93000 GHz

#RES BW 300 kHz

#VBW 1 MHz

STOP 2.00000 GHz

SWP 20.0 msec

RETLIF TESTING LABORATORIES

EMISSIONS DATA SHEET

Test Method:	Intermodulation Characteristics		
Customer:	Cellular Specialties, Inc.	Test Sample:	Frequency Programmable Repeater
Model No:	DSP85-1W-P	Serial No:	n/a
Test Specification:	FCC Part 2	Paragraph:	2.1047
Operating Mode:	Amplifying input signal		
Notes:	PCS Band - TDMA - Downlink		
Job No:	R-4560N	Technician:	M.Seamans
Date:	9/28/2006		

13:31:09 SEP 28, 2006

REF 30.0 dBm

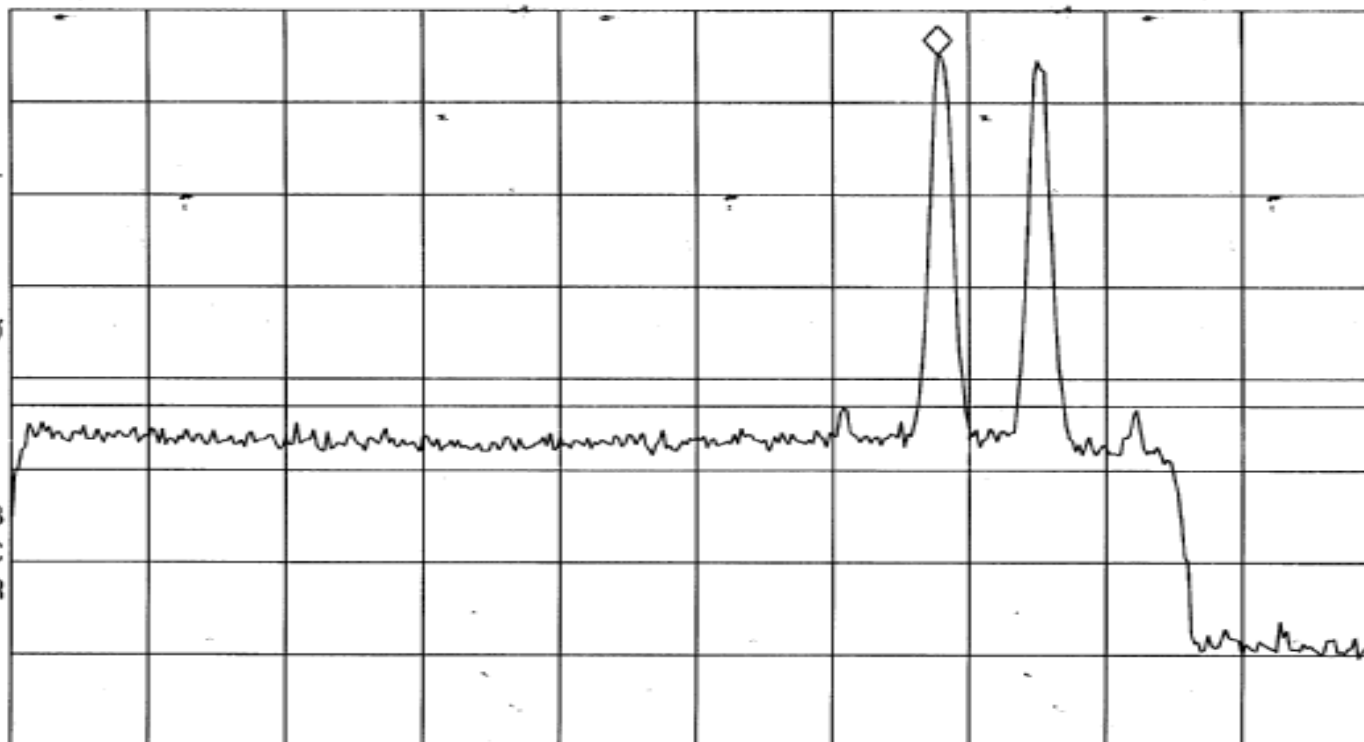
AT 10 dB

MKR 1.97743 GHz

25.18 dBm

PEAK
LOG
10
dB/
OFFST
30.0
dB
DL
-13.0
dBm

VA SB
SC FC
CORR



START 1.93000 GHz

#RES BW 300 kHz

#VBW 1 MHz

STOP 2.00000 GHz

SWP 20.0 msec

RETLIF TESTING LABORATORIES

EMISSIONS DATA SHEET

Test Method:	Intermodulation Characteristics		
Customer:	Cellular Specialties, Inc.	Test Sample:	Frequency Programmable Repeater
Model No:	DSP85-1W-P	Serial No:	n/a
Test Specification:	FCC Part 2	Paragraph: 2.1047	Date: 9/28/2006
Operating Mode:	Amplifying input signal		
Notes:	PCS Band - TDMA - Downlink		

13:31:14 SEP 28, 2006

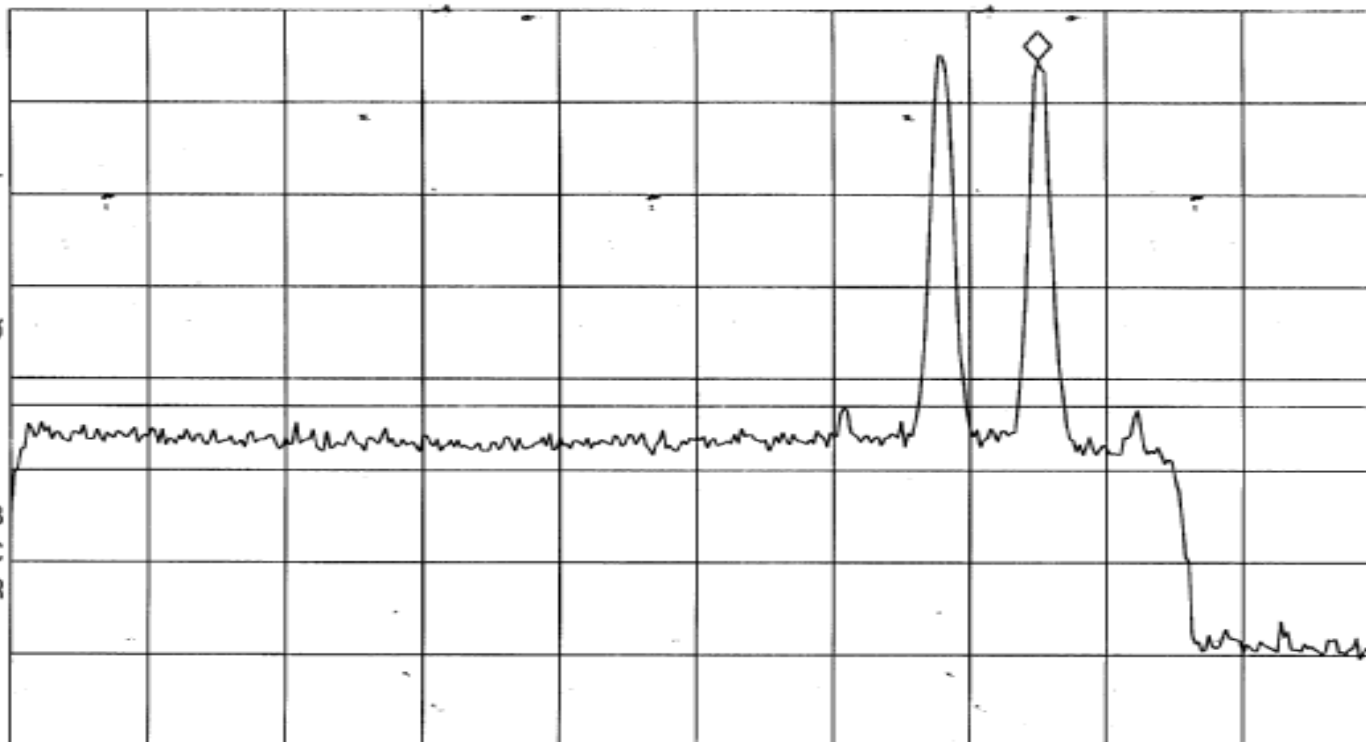
REF 30.0 dBm

AT 10 dB

MKR 1.98250 GHz
24.55 dBm

PEAK
LOG
10
dB/
OFFST
30.0
dB
DL
-13.0
dBm

VA SB
SC FC
CORR



START 1.93000 GHz

#RES BW 300 kHz

#VBW 1 MHz

STOP 2.00000 GHz

SWP 20.0 msec

RETLIF TESTING LABORATORIES

EMISSIONS DATA SHEET

Test Method:	Intermodulation Characteristics		
Customer:	Cellular Specialties, Inc.	Test Sample:	Frequency Programmable Repeater
Model No:	DSP85-1W-P	Serial No:	n/a
Test Specification:	FCC Part 2	Paragraph: 2.1047	Date: 9/28/2006
Operating Mode:	Amplifying input signal		
Notes:	PCS Band - TDMA - Downlink		

13: 31: 40 SEP 28, 2006

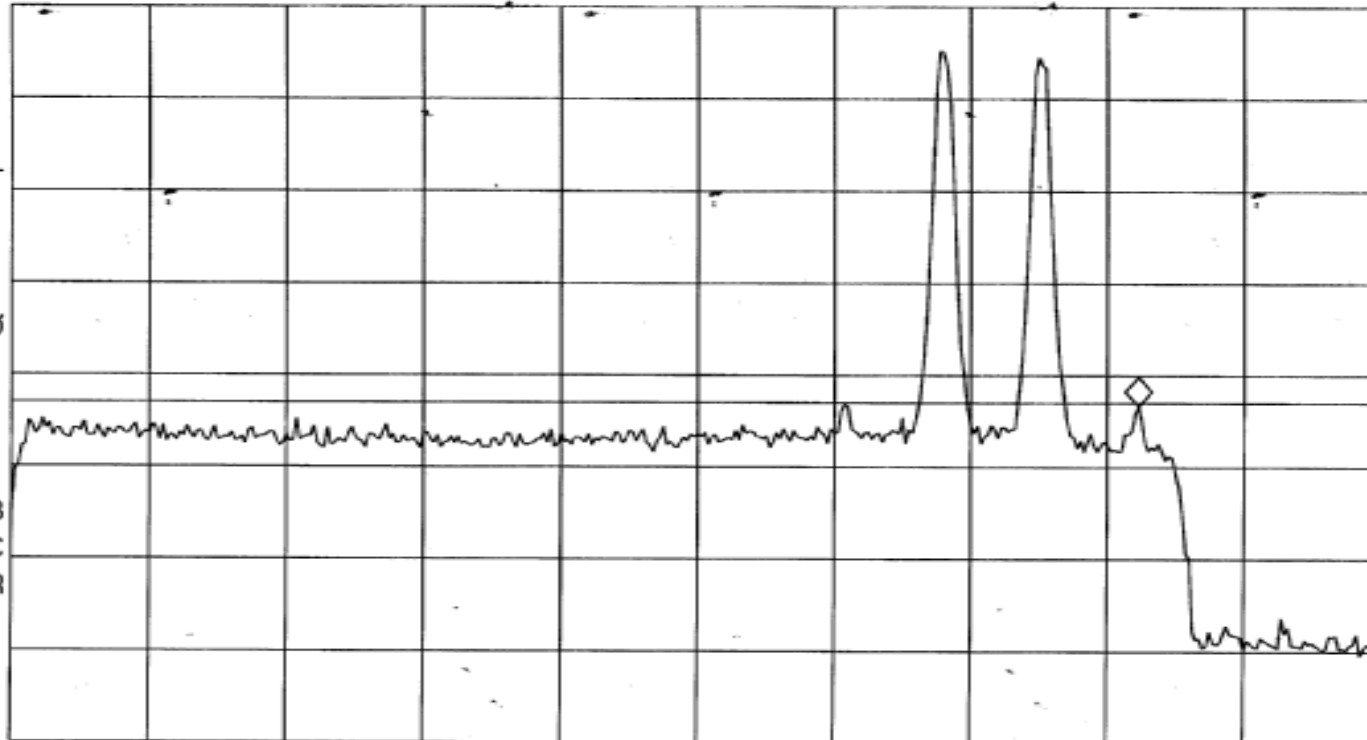
REF 30.0 dBm

AT 10 dB

MKR 1.98758 GHz
-13.36 dBm

PEAK
LOG
10
dB/
OFFST
30.0
dB
DL
-13.0
dBm

VA SB
SC FC
CORR



START 1.93000 GHz
#RES BW 300 kHz

#VBW 1 MHz

STOP 2.00000 GHz
SWP 20.0 msec

RETLIF TESTING LABORATORIES

EMISSIONS DATA SHEET

Test Method:	Intermodulation Characteristics		
Customer:	Cellular Specialties, Inc.	Test Sample:	Frequency Programmable Repeater
Model No:	DSP85-1W-P	Serial No:	n/a
Test Specification:	FCC Part 2	Paragraph:	2.1047
Operating Mode:	Amplifying input signal		
Notes:	PCS Band - CDMA - Downlink		

13:09:00 SEP 28, 2006

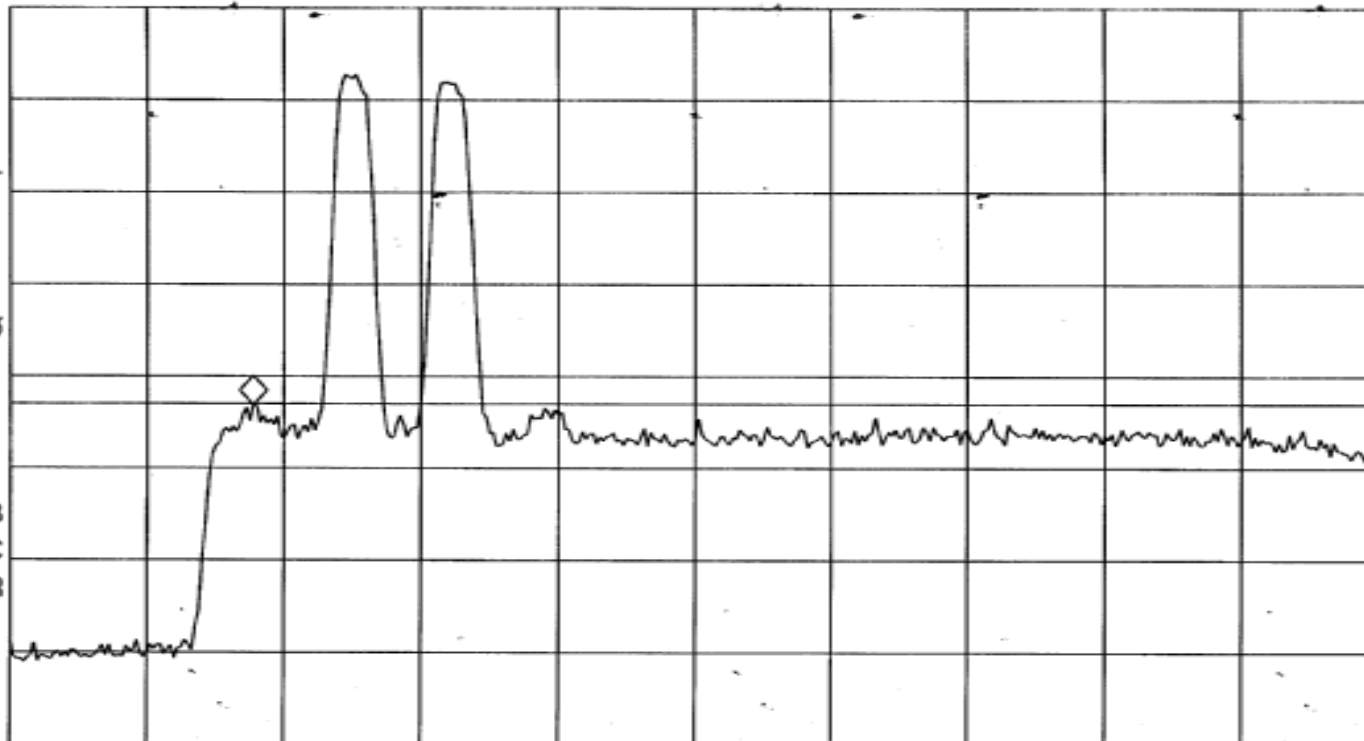
MKR 1.93243 GHz
-13.15 dBm

REF 30.0 dBm

AT 10 dB

PEAK
LOG
10
dB/
OFFST
30.0
dB
DL
-13.0
dBm

VA SB
SC FC
CORR



START 1.92000 GHz

#RES BW 300 KHz

#VBW 1 MHz

STOP 1.99000 GHz

SWP 20.0 msec

RETLIF TESTING LABORATORIES

EMISSIONS DATA SHEET

Test Method:	Intermodulation Characteristics		
Customer:	Cellular Specialties, Inc.	Test Sample:	Frequency Programmable Repeater
Model No:	DSP85-1W-P	Serial No:	n/a
Test Specification:	FCC Part 2	Paragraph:	2.1047
Operating Mode:	Amplifying input signal		
Notes:	PCS Band - CDMA - Downlink		

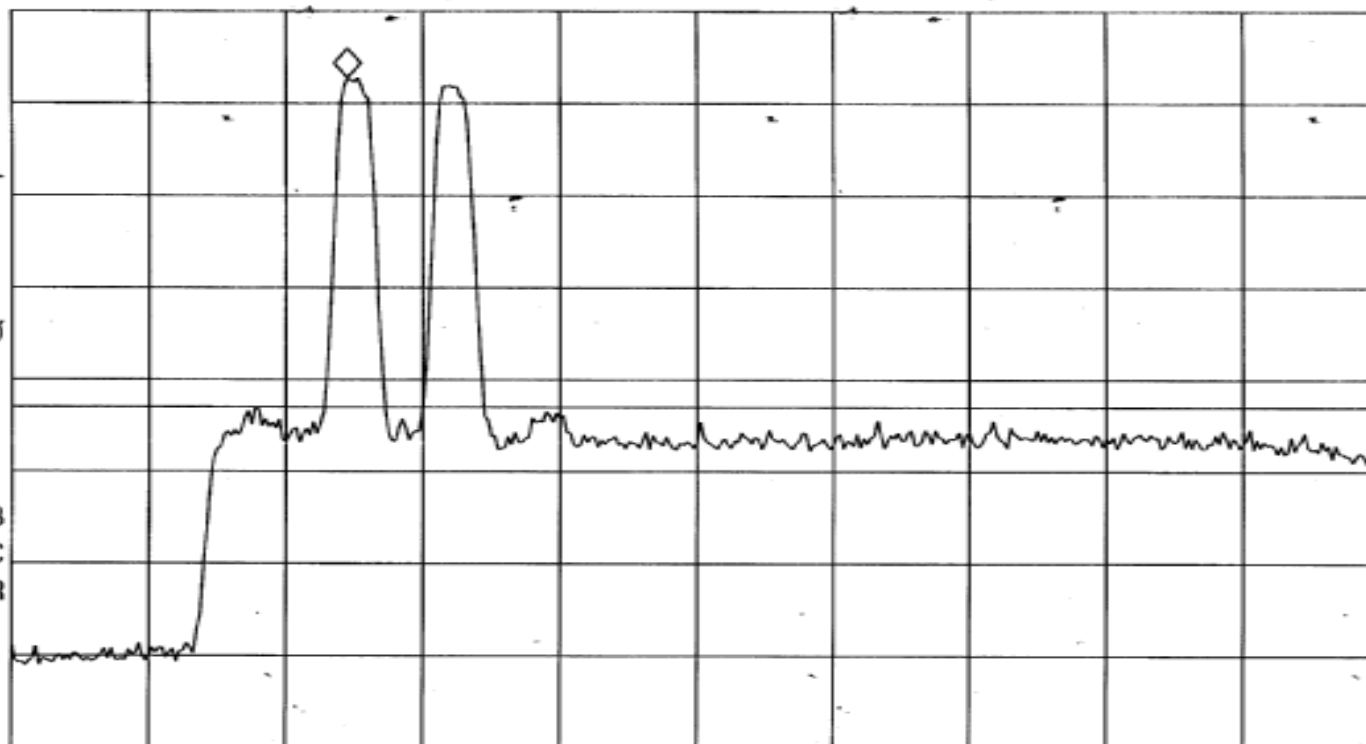
13:08:19 SEP 28, 2006

MKR 1.93715 GHz
22.76 dBm

REF 30.0 dBm AT 10 dB

PEAK
LOG
10
dB/
OFFST
30.0
dB
DL
-13.0
dBm

VA SB
SC FC
CORR



START 1.92000 GHz

#RES BW 300 KHz

#VBW 1 MHz

STOP 1.99000 GHz

SWP 20.0 msec

RETLIF TESTING LABORATORIES

EMISSIONS DATA SHEET

Test Method:	Intermodulation Characteristics		
Customer:	Cellular Specialties, Inc.	Test Sample:	Frequency Programmable Repeater
Model No:	DSP85-1W-P	Serial No:	n/a
Test Specification:	FCC Part 2	Paragraph:	2.1047
Operating Mode:	Amplifying input signal		
Notes:	PCS Band - CDMA - Downlink		

13:08:15 SEP 28, 2006

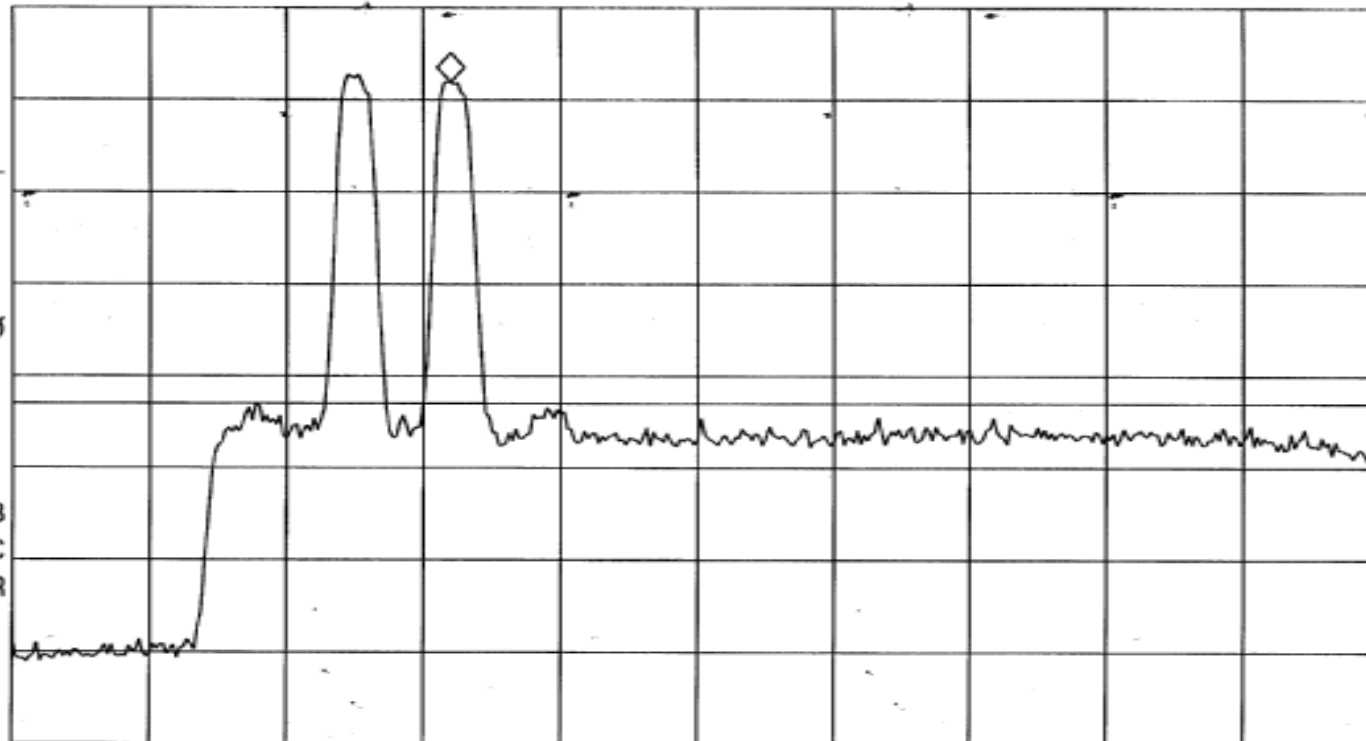
MKR 1.94240 GHz

REF 30.0 dBm AT 10 dB

21.89 dBm

PEAK
LOG
10
dB/
OFFST
30.0
dB
DL
-13.0
dBm

VA SB
SC FC
CORR



START 1.92000 GHz

#RES BW 300 KHz

#VBW 1 MHz

STOP 1.99000 GHz

SWP 20.0 msec

RETLIF TESTING LABORATORIES

EMISSIONS DATA SHEET

Test Method:	Intermodulation Characteristics		
Customer:	Cellular Specialties, Inc.	Test Sample:	Frequency Programmable Repeater
Model No:	DSP85-1W-P	Serial No:	n/a
Test Specification:	FCC Part 2	Paragraph:	2.1047
Operating Mode:	Amplifying input signal		
Notes:	PCS Band - CDMA - Downlink		

13: 07: 02 SEP 28, 2006

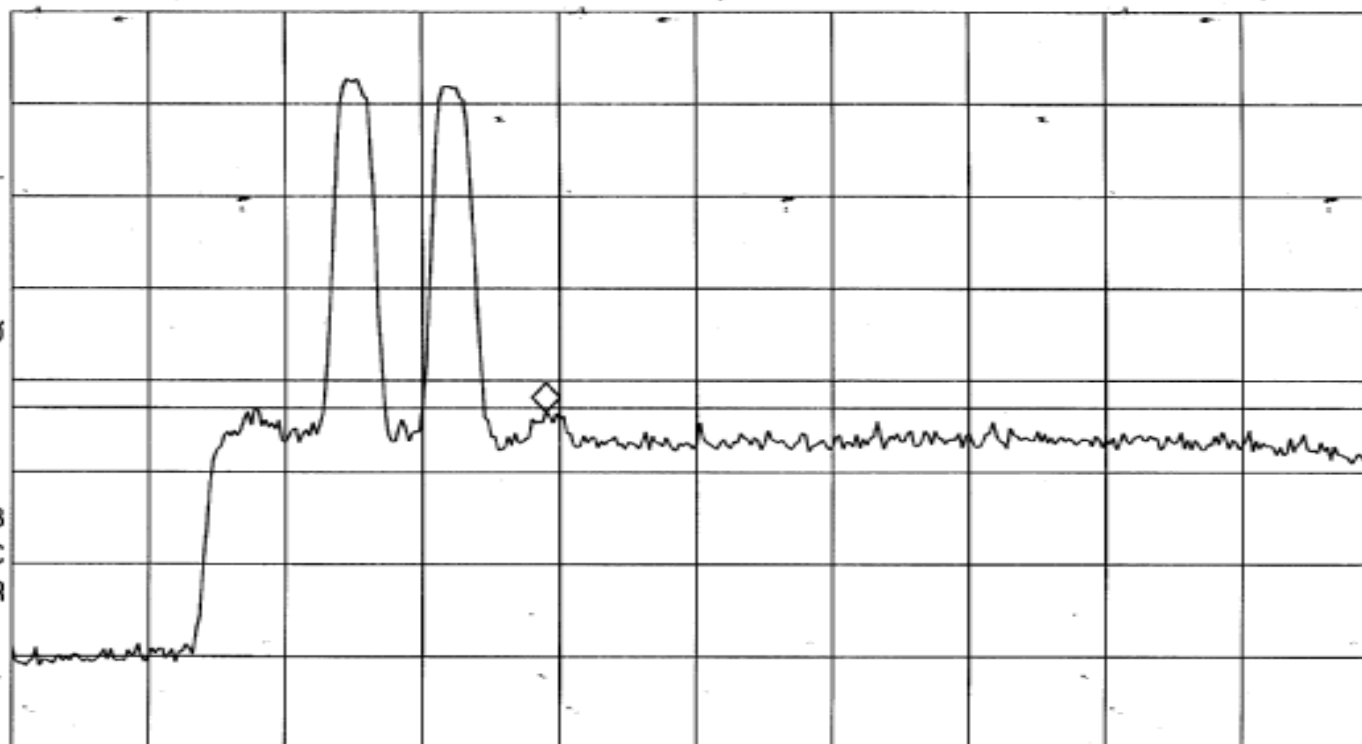
MKR 1.94730 GHz
-13.46 dBm

REF 30.0 dBm

AT 10 dB

PEAK
LOG
10
dB/
OFFST
30.0
dB
DL
-13.0
dBm

VA SB
SC FC
CORR



START 1.92000 GHz

#RES BW 300 kHz

#VBW 1 MHz

STOP 1.99000 GHz

SWP 20.0 msec

RETLIF TESTING LABORATORIES

EMISSIONS DATA SHEET

Test Method:	Intermodulation Characteristics		
Customer:	Cellular Specialties, Inc.	Test Sample:	Frequency Programmable Repeater
Model No:	DSP85-1W-P	Serial No:	n/a
Test Specification:	FCC Part 2	Paragraph: 2.1047	Date: 9/28/2006
Operating Mode:	Amplifying input signal		
Notes:	PCS Band - CDMA - Downlink		

13: 19: 15 SEP 28, 2006

REF 30.0 dBm

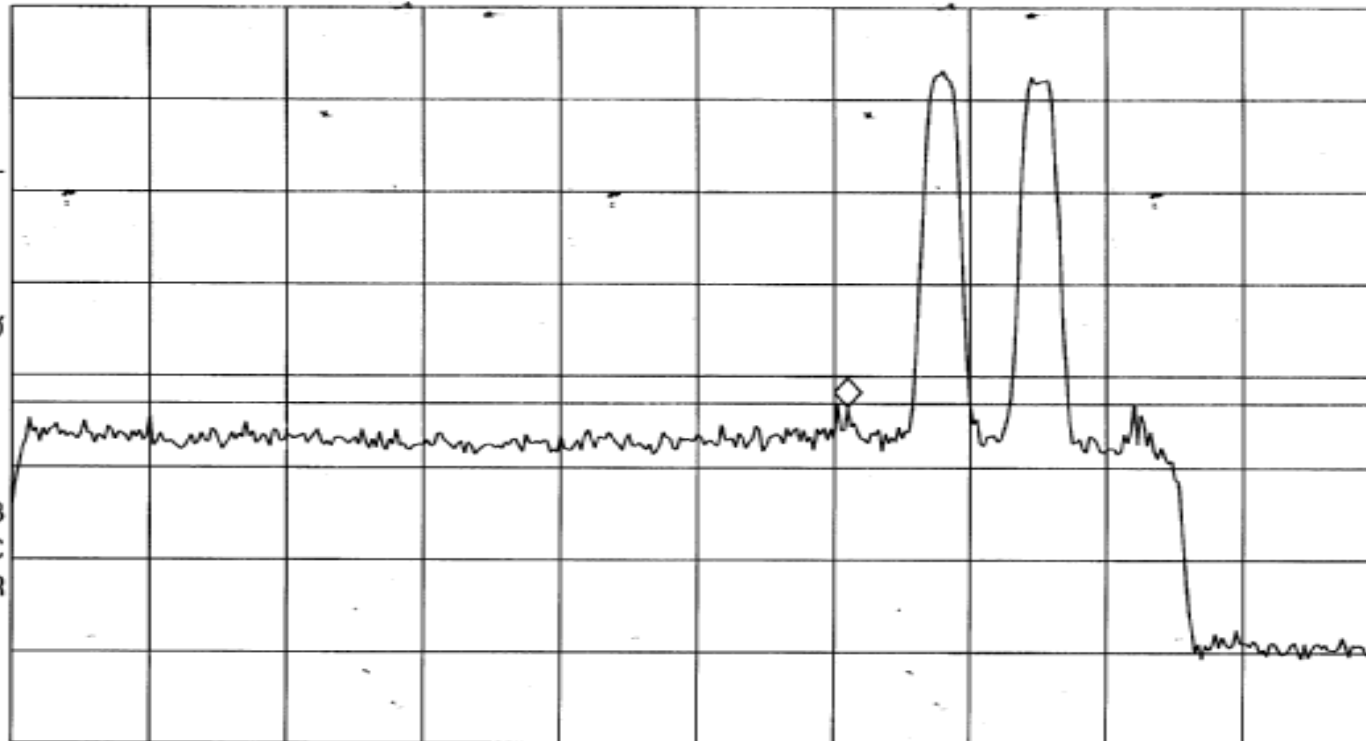
AT 10 dB

MKR 1.97270 GHz

-13.37 dBm

PEAK
LOG
10
dB/
OFFST
30.0
dB
DL
-13.0
dBm

VA SB
SC FC
CORR



START 1.93000 GHz

#RES BW 300 kHz

#VBW 1 MHz

STOP 2.00000 GHz

SWP 20.0 msec

RETLIF TESTING LABORATORIES

EMISSIONS DATA SHEET

Test Method:	Intermodulation Characteristics		
Customer:	Cellular Specialties, Inc.	Test Sample:	Frequency Programmable Repeater
Model No:	DSP85-1W-P	Serial No:	n/a
Test Specification:	FCC Part 2	Paragraph: 2.1047	Date: 9/28/2006
Operating Mode:	Amplifying input signal		
Notes:	PCS Band - CDMA - Downlink		

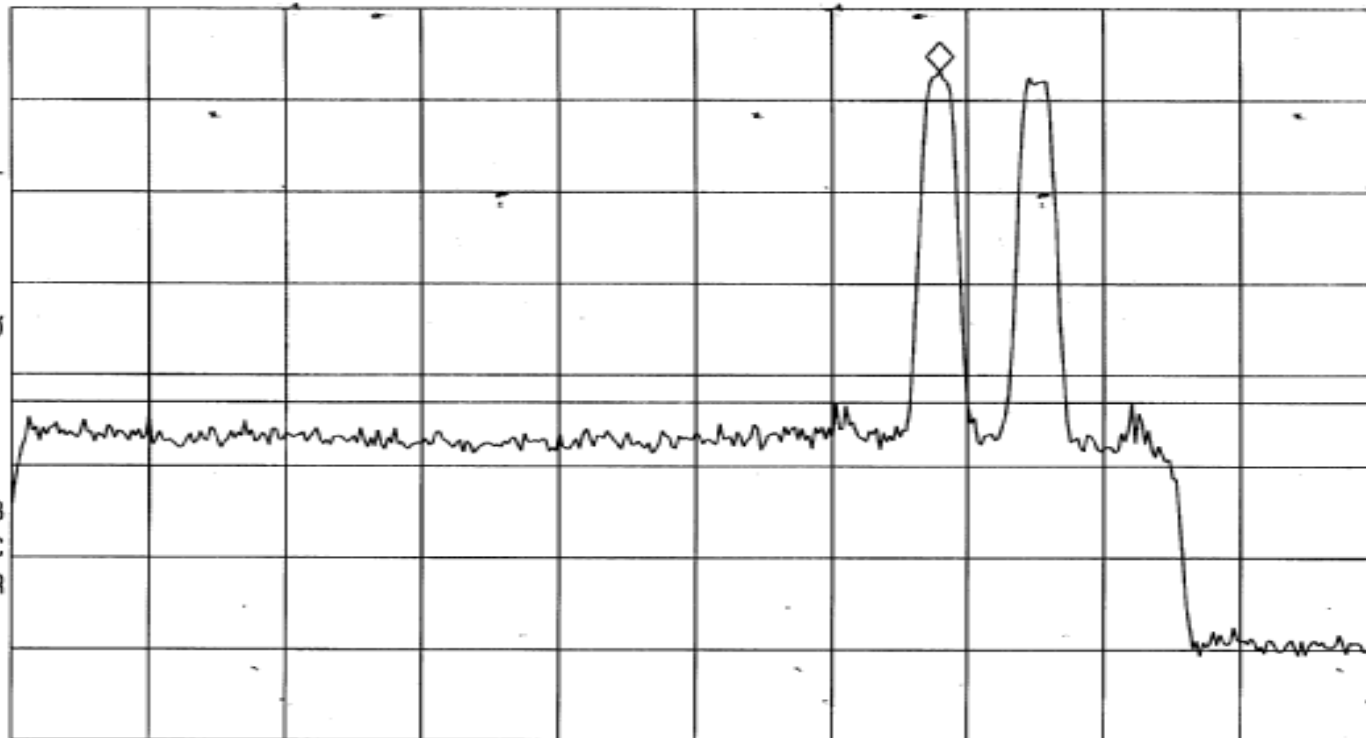
13: 18: 33 SEP 28, 2006

REF 30.0 dBm AT 10 dB

MKR 1.97760 GHz
23.19 dBm

PEAK
LOG
10
dB/
OFFST
30.0
dB
DL
-13.0
dBm

VA SB
SC FC
CORR



START 1.93000 GHz

#RES BW 300 KHz

#VBW 1 MHz

STOP 2.00000 GHz

SWP 20.0 msec

RETLIF TESTING LABORATORIES

EMISSIONS DATA SHEET

Test Method:	Intermodulation Characteristics		
Customer:	Cellular Specialties, Inc.	Test Sample:	Frequency Programmable Repeater
Model No:	DSP85-1W-P	Serial No:	n/a
Test Specification:	FCC Part 2	Paragraph: 2.1047	Date: 9/28/2006
Operating Mode:	Amplifying input signal		
Notes:	PCS Band - CDMA - Downlink		

13: 18: 23 SEP 28, 2006

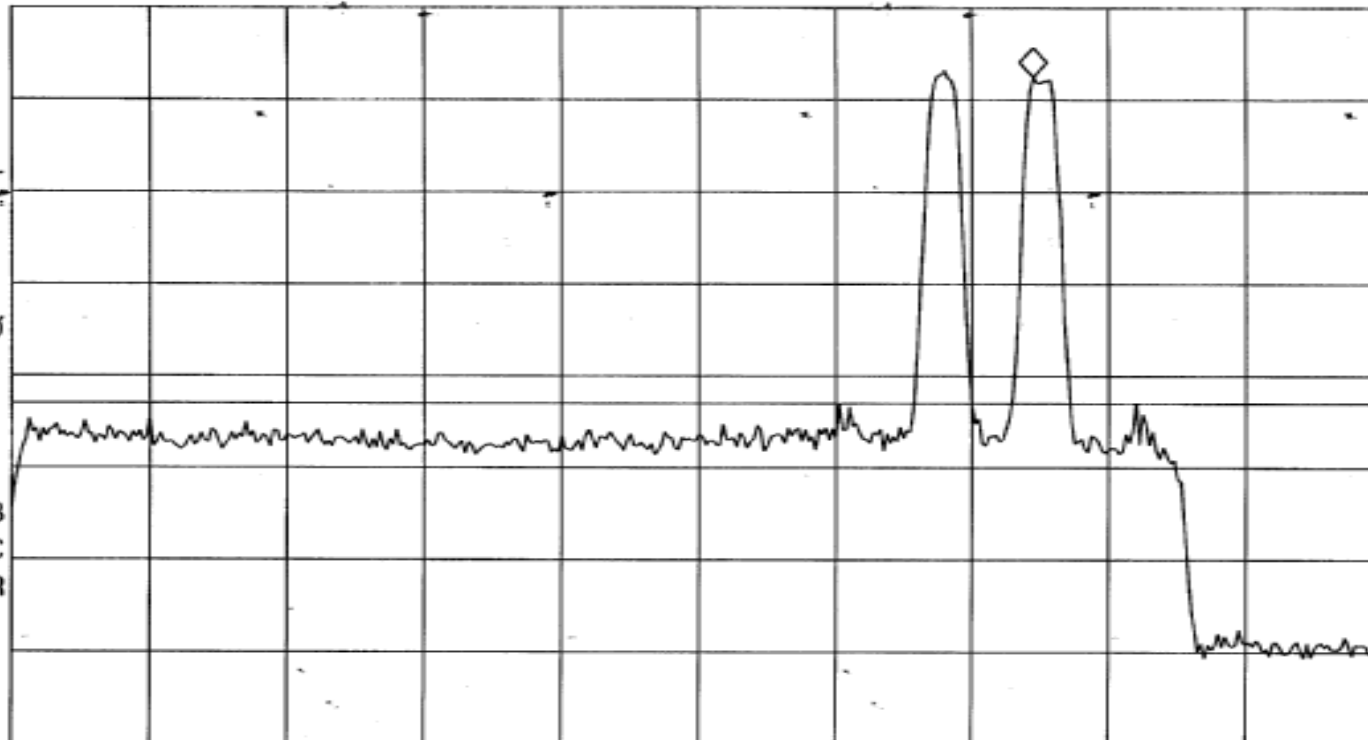
REF 30.0 dBm

AT 10 dB

MKR 1.98215 GHz
22.47 dBm

PEAK
LOG
10
dB/
OFFST
30.0
dB
DL
-13.0
dBm

VA SB
SC FC
CORR



START 1.93000 GHz

#RES BW 300 KHz

#VBW 1 MHz

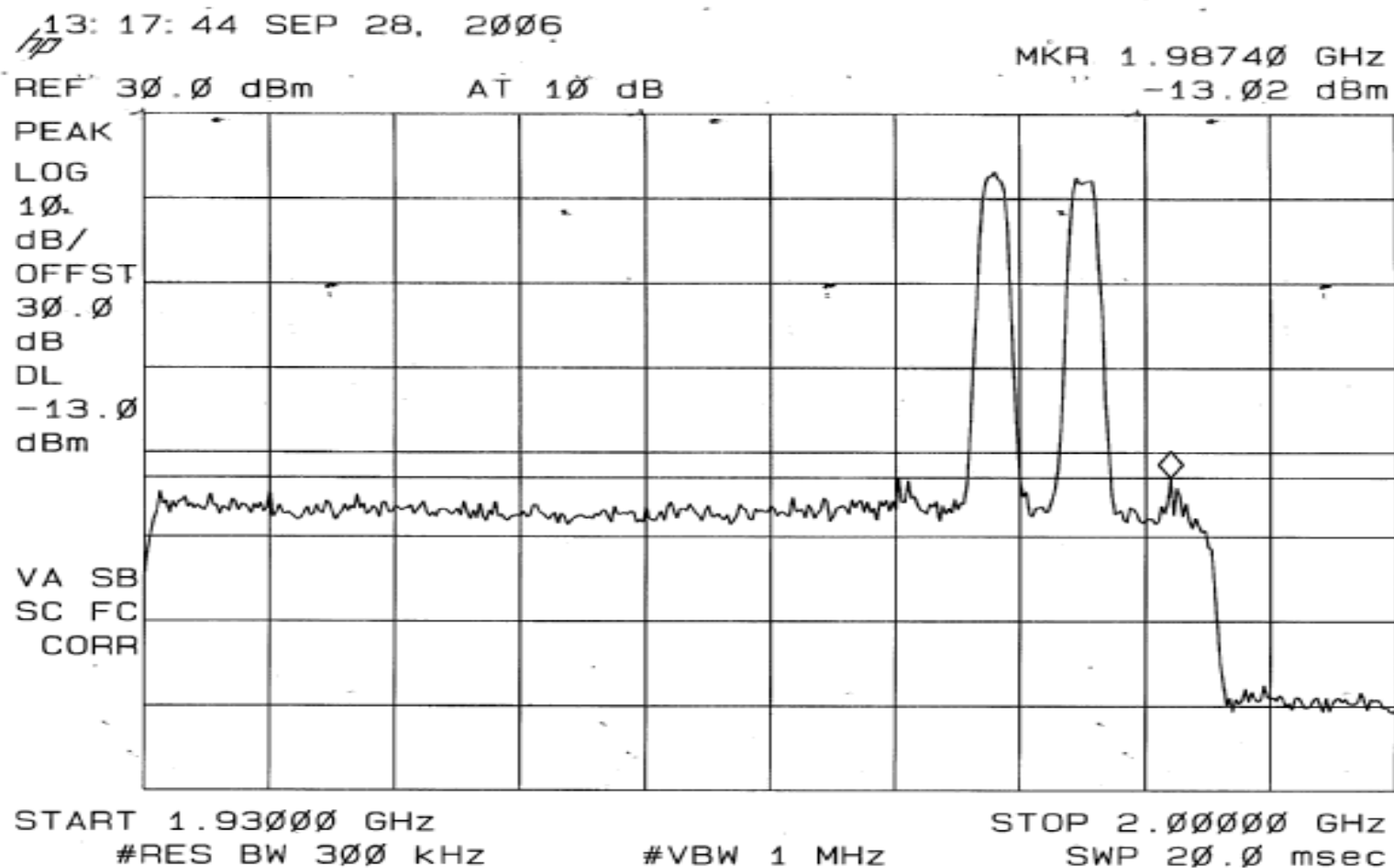
STOP 2.00000 GHz

SWP 20.0 msec

RETLIF TESTING LABORATORIES

EMISSIONS DATA SHEET

Test Method:	Intermodulation Characteristics		
Customer:	Cellular Specialties, Inc.	Test Sample:	Frequency Programmable Repeater
Model No:	DSP85-1W-P	Serial No:	n/a
Test Specification:	FCC Part 2	Paragraph: 2.1047	Date: 9/28/2006
Operating Mode:	Amplifying input signal		
Notes:	PCS Band - CDMA - Downlink		



RETLIF TESTING LABORATORIES

EMISSIONS DATA SHEET

Test Method:	Intermodulation Characteristics		
Customer:	Cellular Specialties, Inc.	Test Sample:	Frequency Programmable Repeater
Model No:	DSP85-1W-P	Serial No:	n/a
Test Specification:	FCC Part 2	Paragraph: 2.1047	Date: 9/28/2006
Operating Mode:	Amplifying input signal		
Notes:	PCS Band - GSM - Downlink		

13: 39: 45 SEP 28, 2006

REF 30.0 dBm

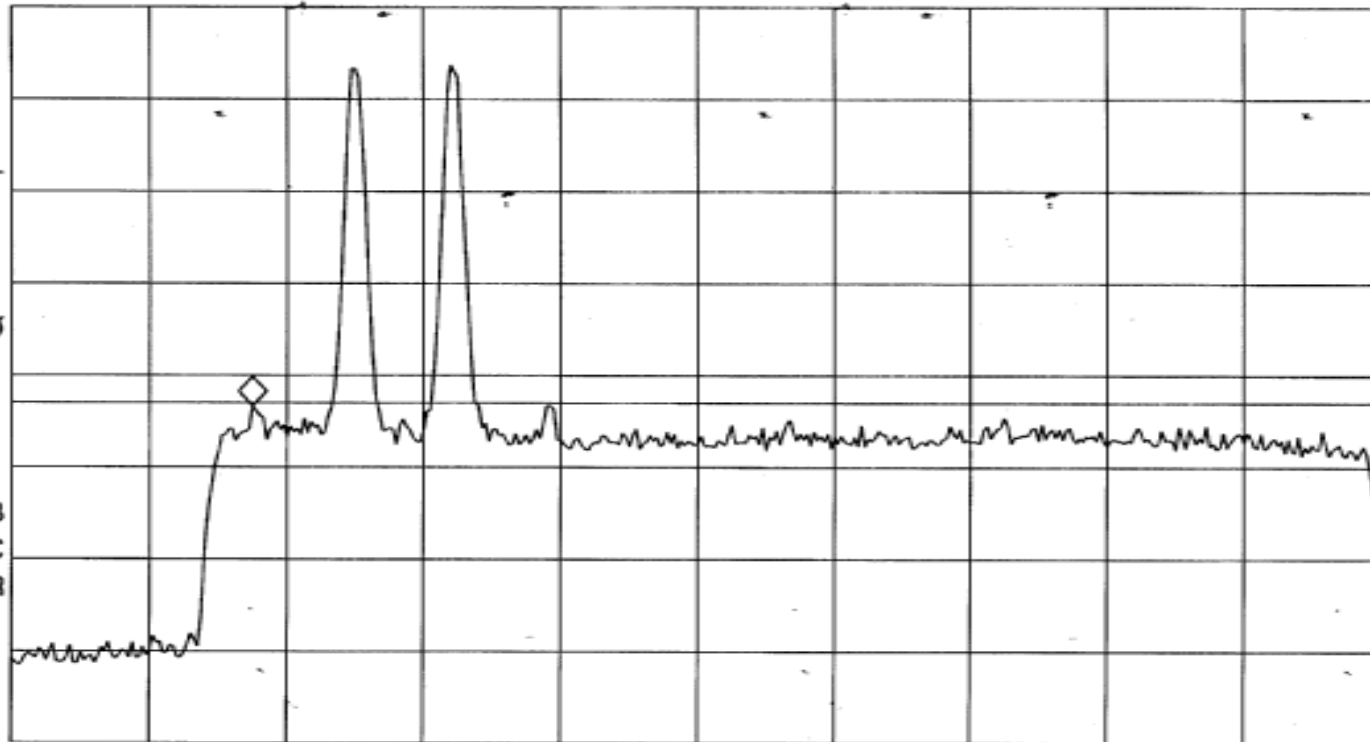
AT 10 dB

MKR 1.93225 GHz

-13.36 dBm

PEAK
LOG
10
dB/
OFFST
30.0
dB
DL
-13.0
dBm

VA SB
SC FC
CORR



START 1.92000 GHz

#RES BW 300 kHz

#VBW 1 MHz

STOP 1.99000 GHz

SWP 20.0 msec

RETLIF TESTING LABORATORIES

EMISSIONS DATA SHEET

Test Method:	Intermodulation Characteristics		
Customer:	Cellular Specialties, Inc.	Test Sample:	Frequency Programmable Repeater
Model No:	DSP85-1W-P	Serial No:	n/a
Test Specification:	FCC Part 2	Paragraph: 2.1047	Date: 9/28/2006
Operating Mode:	Amplifying input signal		
Notes:	PCS Band - GSM - Downlink		

13: 39: 56 SEP 28, 2006

REF 30.0 dBm

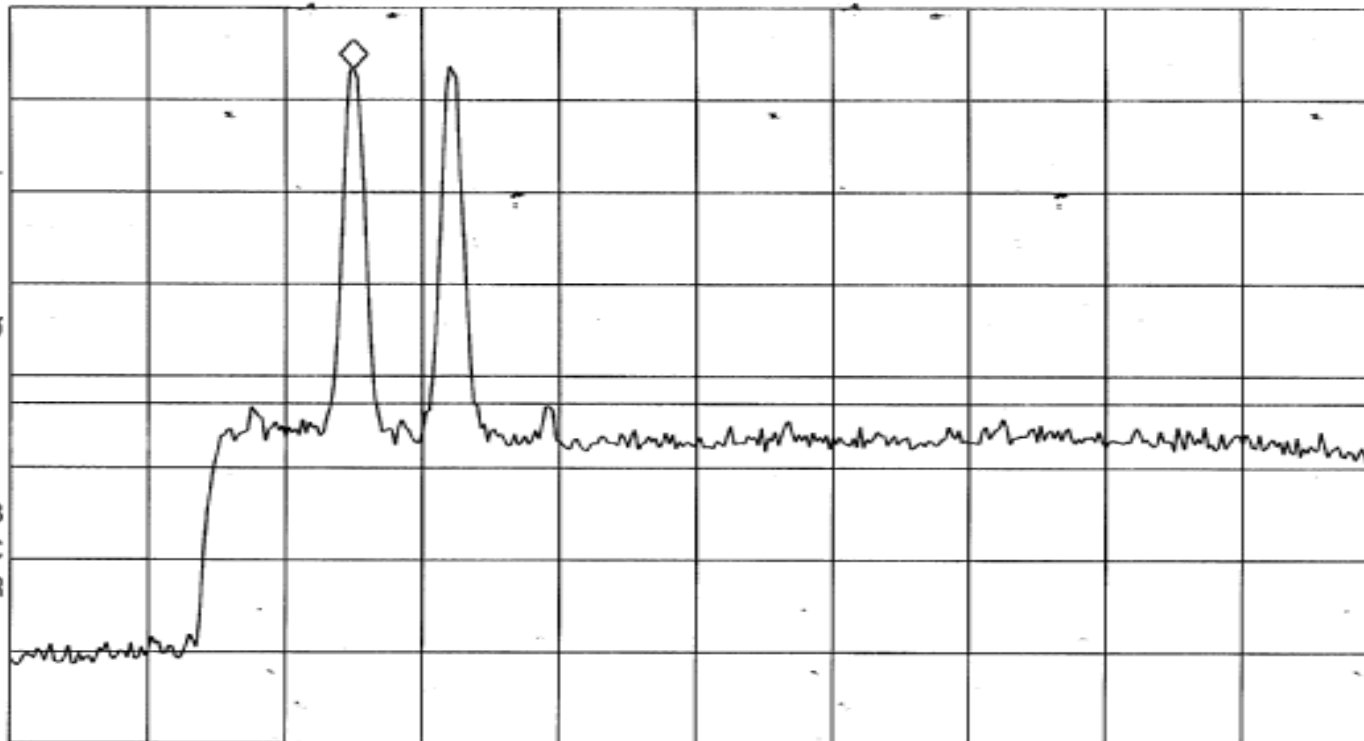
AT 10 dB

MKR 1.93750 GHz

23.38 dBm

PEAK
LOG
10
dB/
OFFST
30.0
dB
DL
-13.0
dBm

VA SB
SC FC
CORR



START 1.92000 GHz

#RES BW 300 kHz

#VBW 1 MHz

STOP 1.99000 GHz

SWP 20.0 msec

RETLIF TESTING LABORATORIES

EMISSIONS DATA SHEET

Test Method:	Intermodulation Characteristics		
Customer:	Cellular Specialties, Inc.	Test Sample:	Frequency Programmable Repeater
Model No:	DSP85-1W-P	Serial No:	n/a
Test Specification:	FCC Part 2	Paragraph: 2.1047	Date:
Operating Mode:	Amplifying input signal		
Notes:	PCS Band - GSM - Downlink		

13: 40: 07 SEP 28, 2006

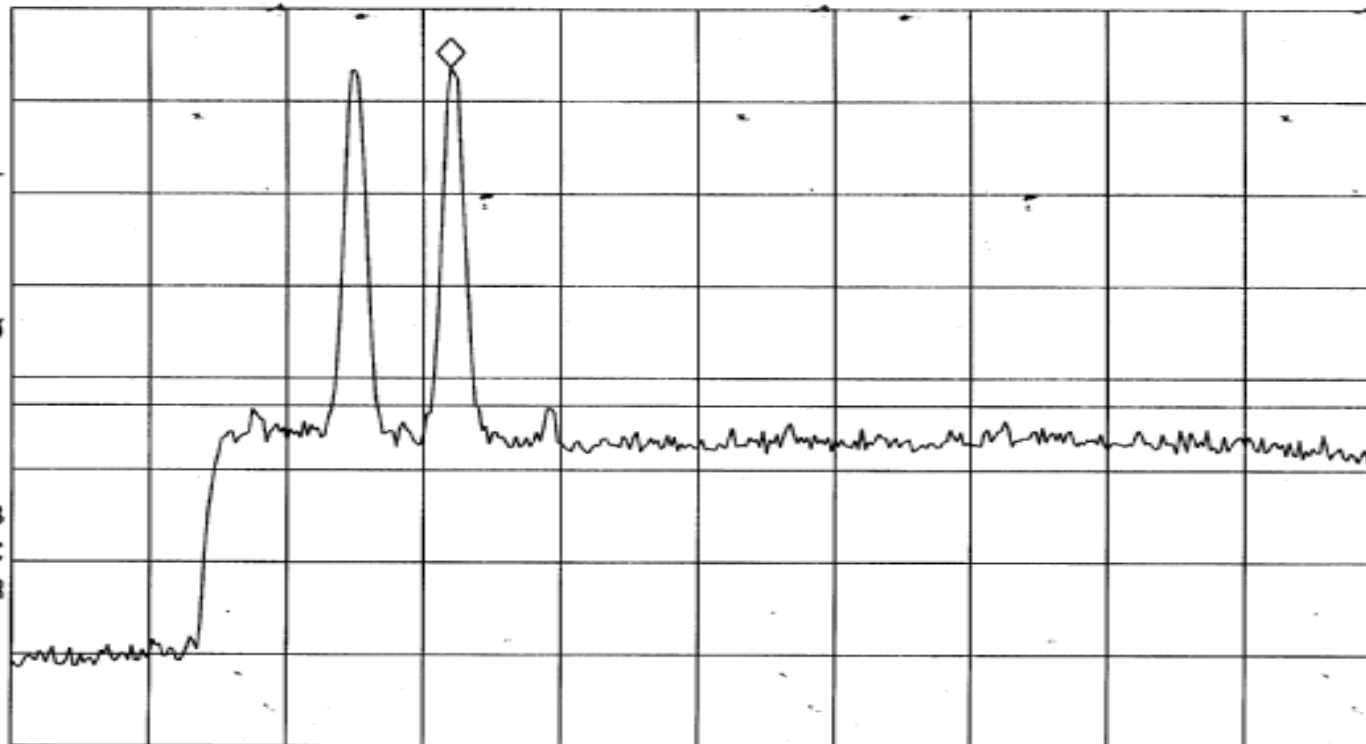
REF 30.0 dBm

AT 10 dB

MKR 1.94240 GHz
23.66 dBm

PEAK
LOG
10
dB/
OFFST
30.0
dB
DL
-13.0
dBm

VA SB
SC FC
CORR



START 1.92000 GHz

#RES BW 300 kHz

#VBW 1 MHz

STOP 1.99000 GHz

SWP 20.0 msec

RETLIF TESTING LABORATORIES

EMISSIONS DATA SHEET

Test Method:	Intermodulation Characteristics		
Customer:	Cellular Specialties, Inc.	Test Sample:	Frequency Programmable Repeater
Model No:	DSP85-1W-P	Serial No:	n/a
Test Specification:	FCC Part 2	Paragraph: 2.1047	Date: 9/28/2006
Operating Mode:	Amplifying input signal		
Notes:	PCS Band - GSM - Downlink		

13:40:35 SEP 28, 2006

REF 30.0 dBm

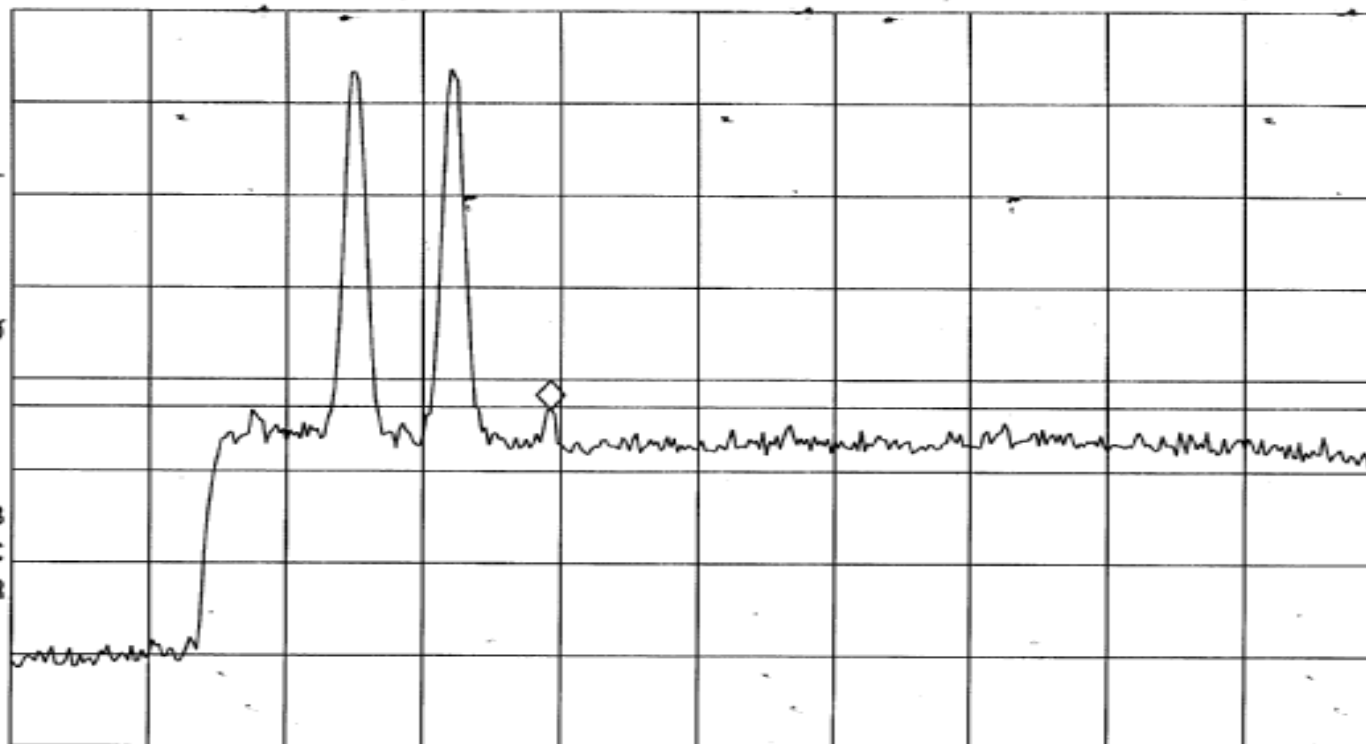
AT 10 dB

MKR 1.94748 GHz

-13.30 dBm

PEAK
LOG
10
dB/
OFFST
30.0
dB
DL
-13.0
dBm

VA SB
SC FC
CORR



START 1.92000 GHz

#RES BW 300 kHz

#VBW 1 MHz

STOP 1.99000 GHz

SWP 20.0 msec

RETLIF TESTING LABORATORIES

EMISSIONS DATA SHEET

Test Method:	Intermodulation Characteristics		
Customer:	Cellular Specialties, Inc.	Test Sample:	Frequency Programmable Repeater
Model No:	DSP85-1W-P	Serial No:	n/a
Test Specification:	FCC Part 2	Paragraph: 2.1047	Date: 9/28/2006
Operating Mode:	Amplifying input signal		
Notes:	PCS Band - GSM - Downlink		

14:30:37 SEP 28, 2006

MKR 1.97235 GHz

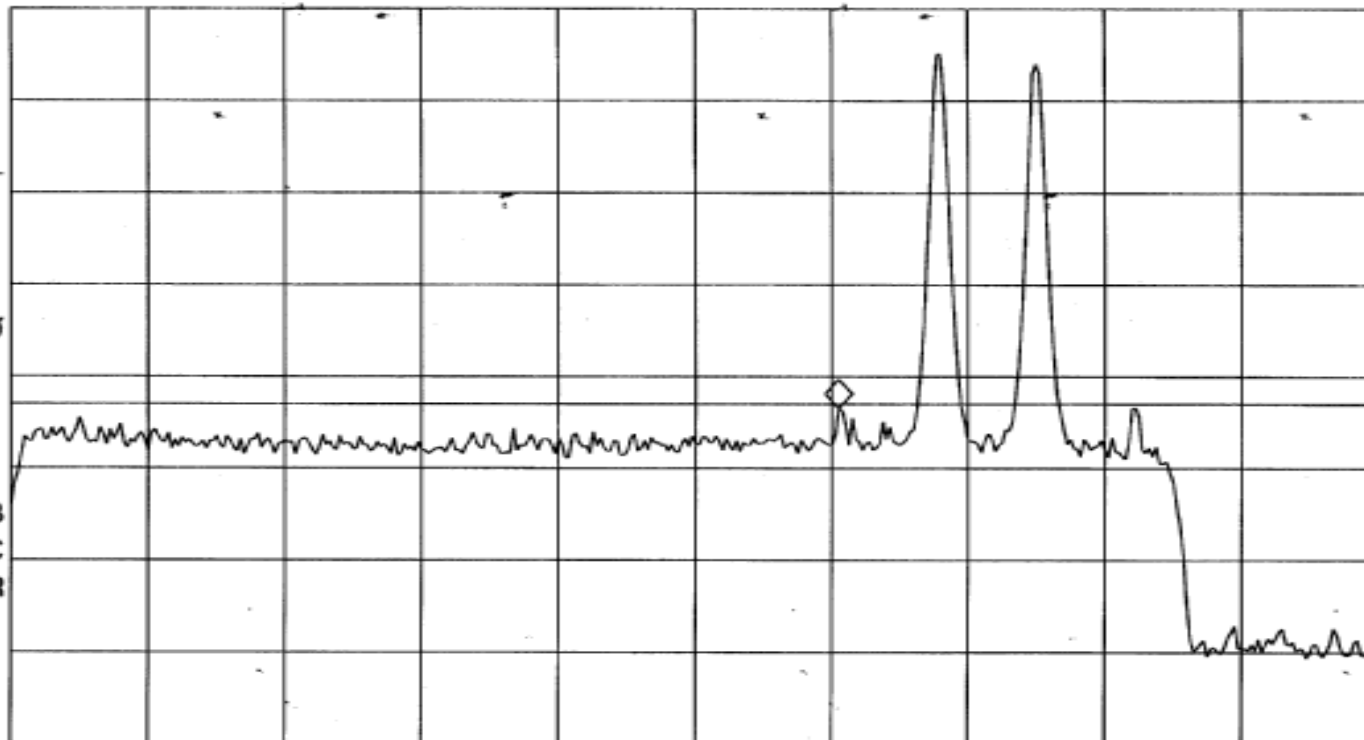
REF 30.0 dBm

AT 10 dB

-13.48 dBm

PEAK
LOG
10
dB/
OFFST
30.0
dB
DL
-13.0
dBm

VA SB
SC FC
CORR



START 1.93000 GHz

#RES BW 300 kHz

#VBW 1 MHz

STOP 2.00000 GHz

SWP 20.0 msec