

RETLIF TESTING LABORATORIES

EMISSIONS DATA SHEET

Test Method:	Intermodulation Characteristics			
Customer:	Cellular Specialties, Inc.	Test Sample:	Digital Repeater	
Model No:	CSI-DSP85-1W-C	Serial No:	ENG060007	
Test Specification:	FCC Part 2	Paragraph:	2.1047	
Operating Mode:	Amplifying input signal			
Notes:	Amps Band - GSM - Downlink			
Job No:	R-4681N-1		Technician:	M.Seamans
Date:	9/12/2006			

11:00:08 SEP 12, 2006

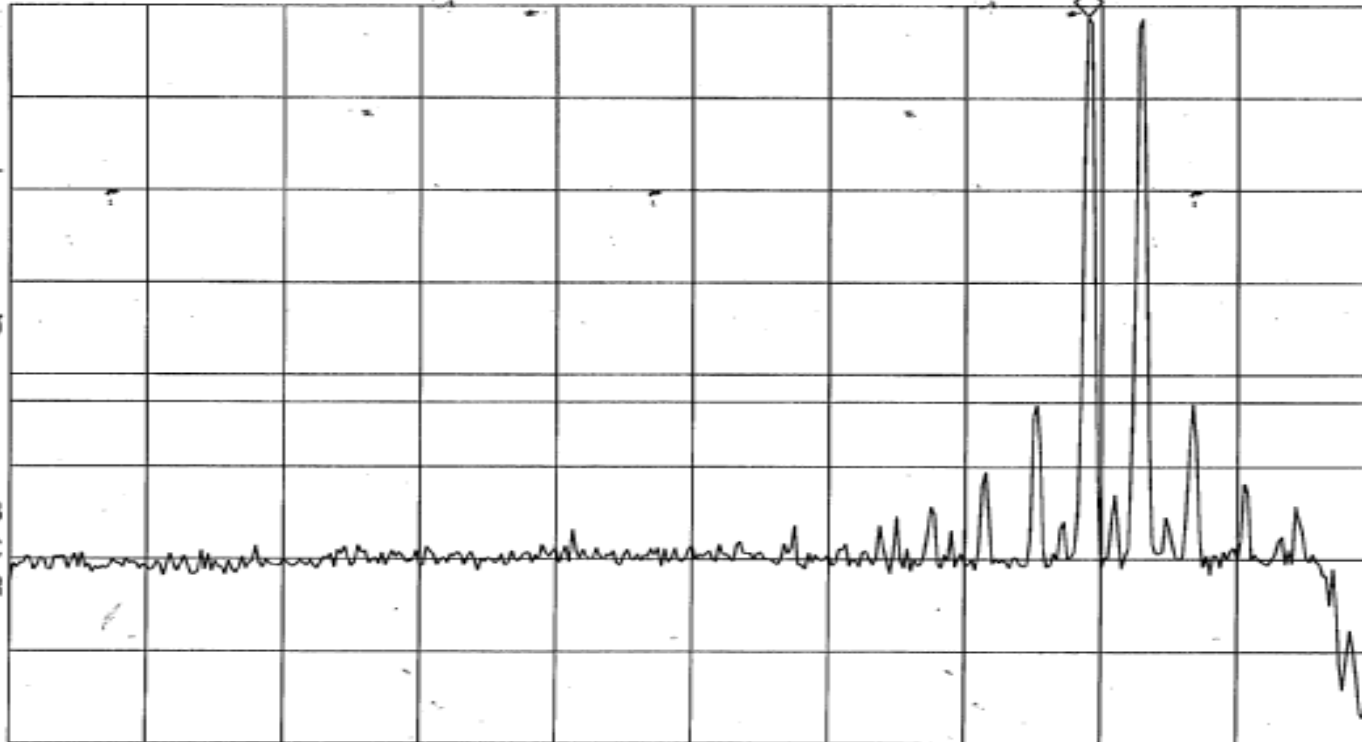
MKR 889.54 MHz
28.86 dBm

REF 30.0 dBm

AT 10 dB

PEAK
LOG
10
dB/
OFFST
30.0
dB
DL
-13.0
dBm

VA SB
SC FC
CORR



START 869.00 MHz

#RES BW 30 kHz

#VBW 100 kHz

STOP 895.00 MHz

SWP 86.7 msec

RETLIF TESTING LABORATORIES

EMISSIONS DATA SHEET

Test Method:	Intermodulation Characteristics				
Customer:	Cellular Specialties, Inc.	Test Sample:	Digital Repeater	Job No:	R-4681N-1
Model No:	CSI-DSP85-1W-C	Serial No:	ENG060007	Technician:	M.Seamans
Test Specification:	FCC Part 2	Paragraph:	2.1047	Date:	9/12/2006
Operating Mode:	Amplifying input signal				
Notes:	Amps Band - GSM - Downlink				

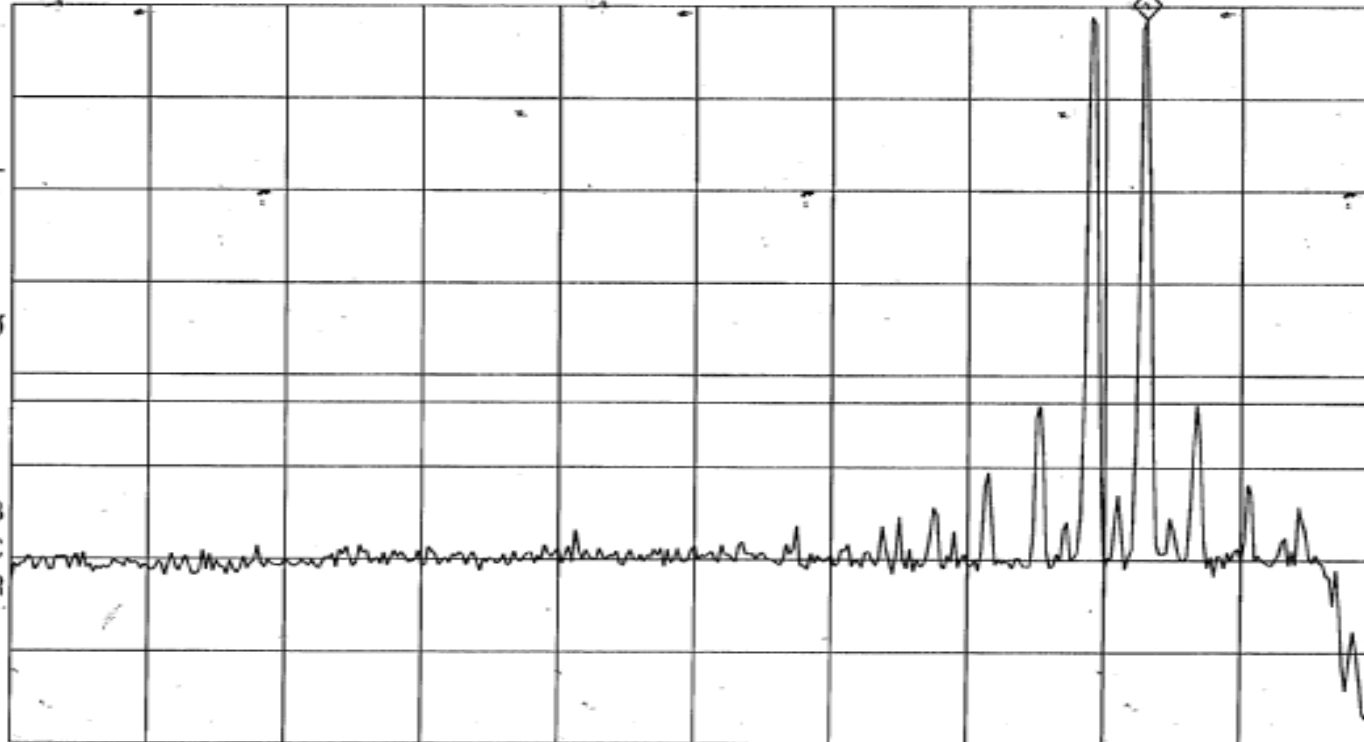
11:00:47 SEP 12, 2006

REF 30.0 dBm AT 10 dB

MKR 890.58 MHz
28.63 dBm

PEAK
LOG
10
dB/
OFFST
30.0
dB
DL
-13.0
dBm

VA SB
SC FC
CORR



START 869.00 MHz
#RES BW 30 kHz

#VBW 100 kHz

STOP 895.00 MHz
SWP 86.7 msec

RETLIF TESTING LABORATORIES

EMISSIONS DATA SHEET

Test Method:	Intermodulation Characteristics			
Customer:	Cellular Specialties, Inc.	Test Sample:	Digital Repeater	
Model No:	CSI-DSP85-1W-C	Serial No:	ENG060007	
Test Specification:	FCC Part 2	Paragraph:	2.1047	
Operating Mode:	Amplifying input signal			
Notes:	Amps Band - GSM - Downlink			
Job No:	R-4681N-1		Technician:	M.Seamans
Date:	9/12/2006			

11:00:53 SEP 12, 2006

REF 30.0 dBm

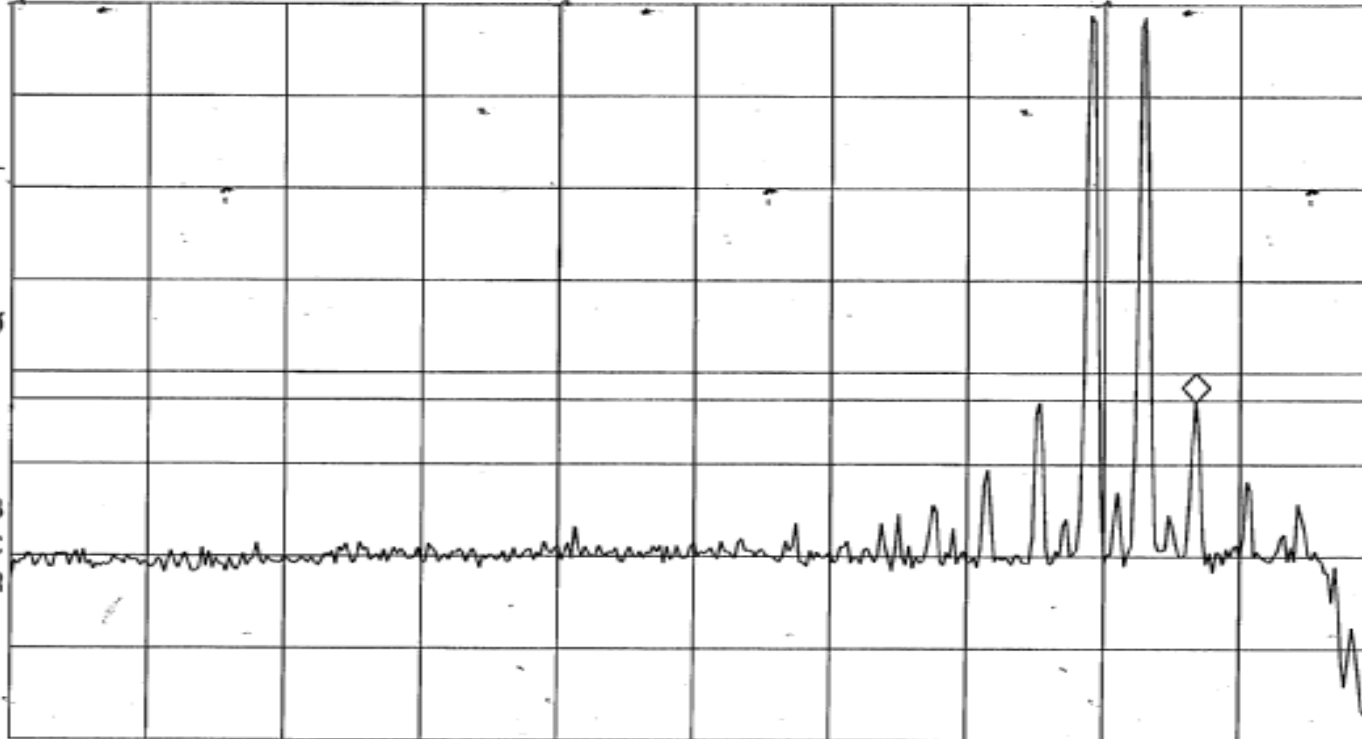
AT 10 dB

MKR 891.56 MHz

-13.21 dBm

PEAK
LOG
10
dB/
OFFST
30.0
dB
DL
-13.0
dBm

VA SB
SC FC
CORR



START 869.00 MHz

#RES BW 30 kHz

#VBW 100 kHz

STOP 895.00 MHz

SWP 86.7 msec

RETLIF TESTING LABORATORIES

EMISSIONS DATA SHEET

Test Method:	Intermodulation Characteristics			
Customer:	Cellular Specialties, Inc.	Test Sample:	Digital Repeater	
Model No:	CSI-DSP85-1W-C	Serial No:	ENG060007	
Test Specification:	FCC Part 2	Paragraph:	2.1047	
Operating Mode:	Amplifying input signal			
Notes:	Amps Band - TDMA - Uplink			
Job No:	R-4681N-1		Technician:	M.Seamans
Date:	9/12/2006			

09:55:03 SEP 12, 2006

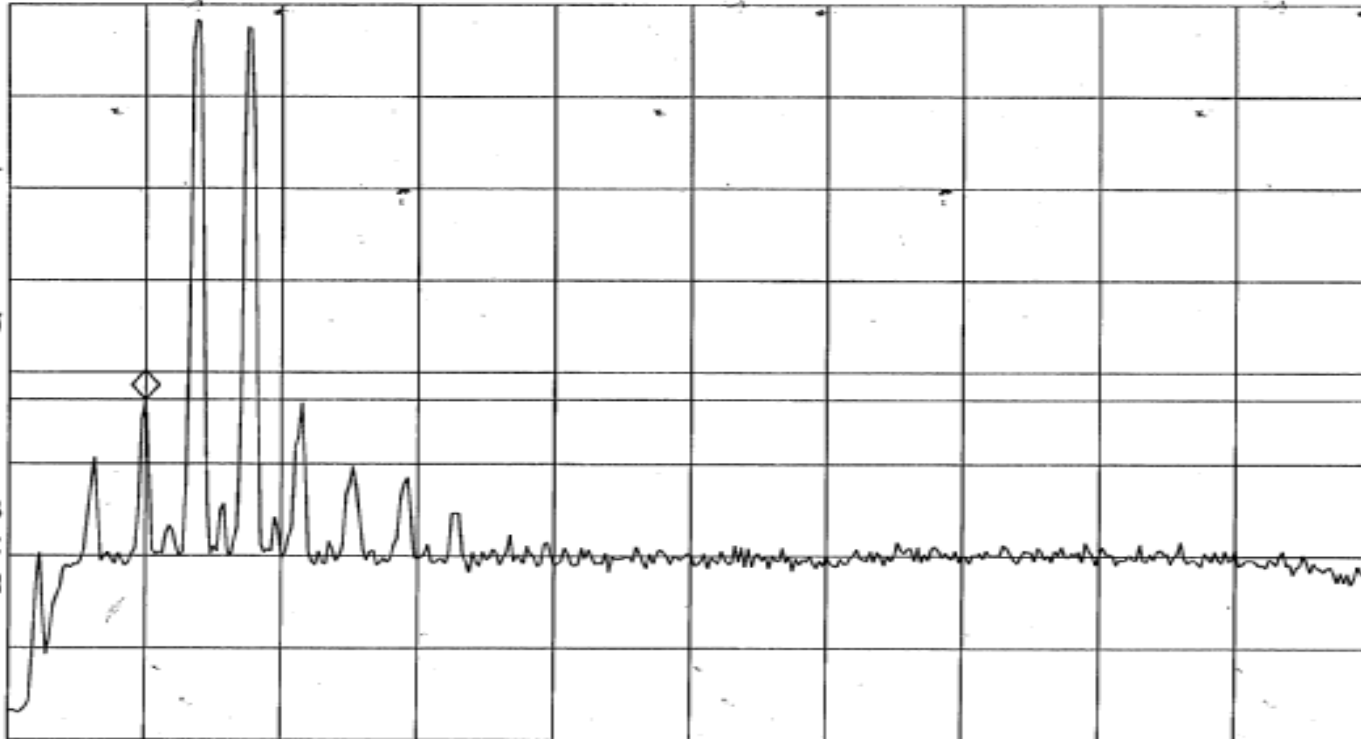
MKR 825.60 MHz
-13.02 dBm

REF 30.0 dBm

AT 10 dB

PEAK
LOG
10
dB/
OFFST
30.0
dB
DL
-13.0
dBm

VA SB
SC FC
CORR



START 823.00 MHz

#RES BW 30 kHz

#VBW 100 kHz

STOP 849.00 MHz

SWP 86.7 msec

RETLIF TESTING LABORATORIES

EMISSIONS DATA SHEET

Test Method:	Intermodulation Characteristics		
Customer:	Cellular Specialties, Inc.	Test Sample:	Digital Repeater
Model No:	CSI-DSP85-1W-C	Serial No:	ENG060007
Test Specification:	FCC Part 2	Paragraph: 2.1047	Date:
Operating Mode:	Amplifying input signal		
Notes:	Amps Band - TDMA - Uplink		
Job No:	R-4681N-1	Technician:	M.Seamans

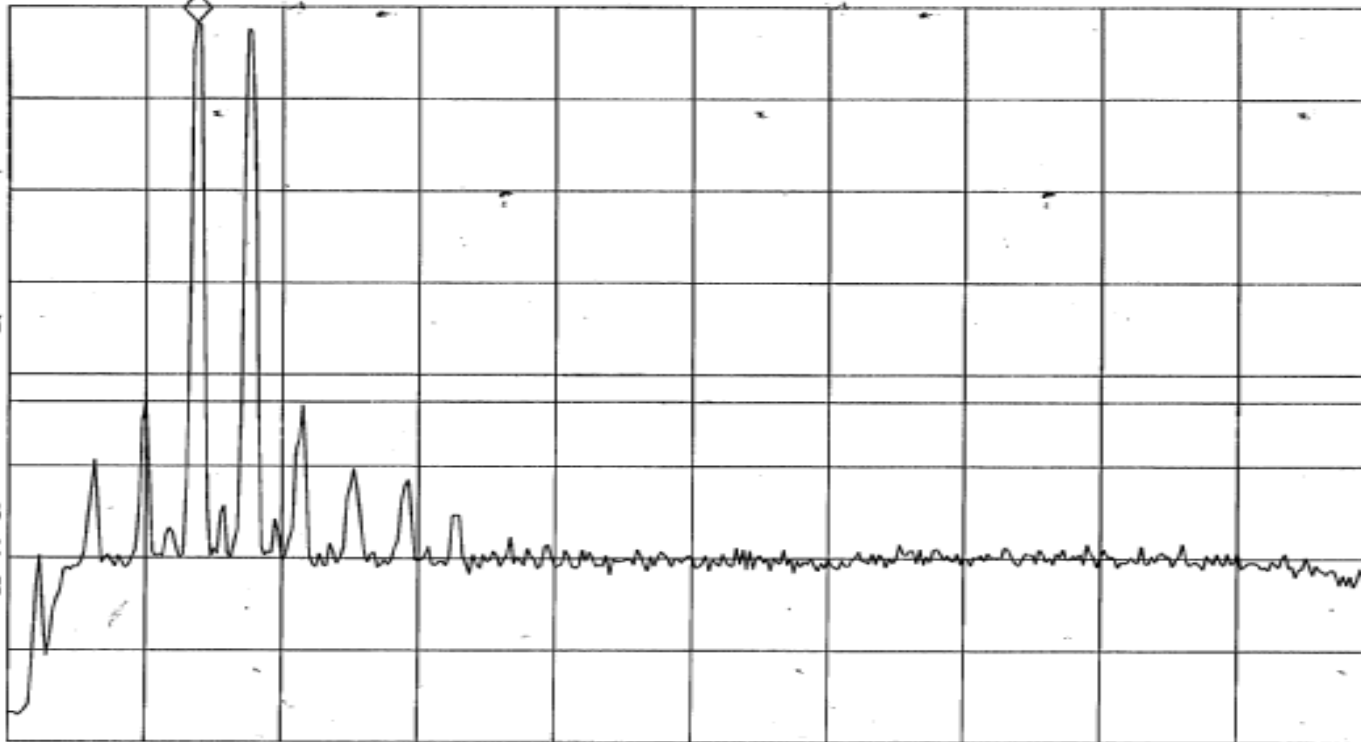
09:55:21 SEP 12, 2006

MKR 826.58 MHz
28.28 dBm

REF 30.0 dBm AT 10 dB

PEAK
LOG
10
dB/
OFFST
30.0
dB
DL
-13.0
dBm

VA SB
SC FC
CORR



START 823.00 MHz
#RES BW 30 KHz

#VBW 100 KHz

STOP 849.00 MHz
SWP 86.7 msec

RETLIF TESTING LABORATORIES

EMISSIONS DATA SHEET

Test Method:	Intermodulation Characteristics		
Customer:	Cellular Specialties, Inc.	Test Sample:	Digital Repeater
Model No:	CSI-DSP85-1W-C	Serial No:	ENG060007
Test Specification:	FCC Part 2	Paragraph:	2.1047
Operating Mode:	Amplifying input signal		
Notes:	Amps Band - TDMA - Uplink		
Job No:	R-4681N-1	Technician:	M.Seamans
Date:	9/12/2006		

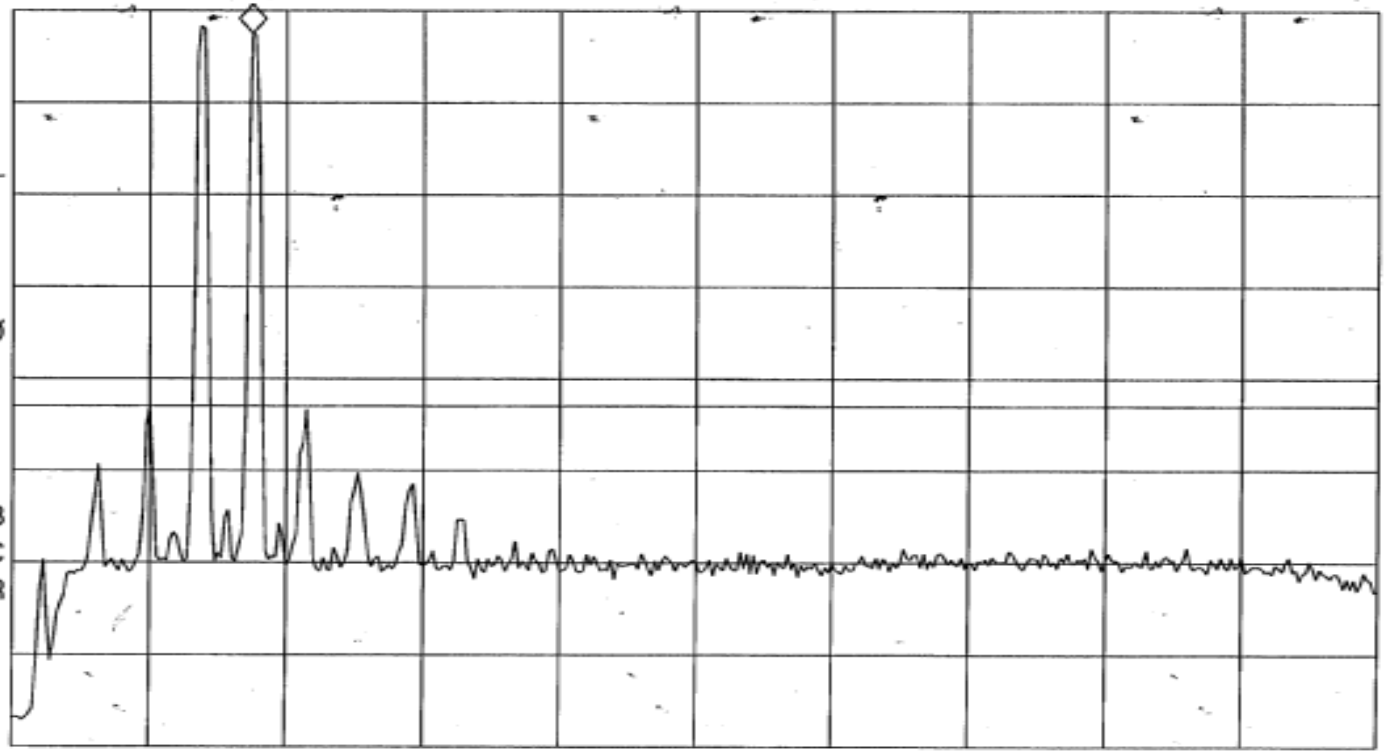
09:55:49 SEP 12. 2006

MKR 827.55 MHz
27.52 dBm

REF 30.0 dBm AT 10 dB

PEAK
LOG
10
dB/
OFFST
30.0
dB
DL
-13.0
dBm

VA SB
SC FC
CORR



START 823.00 MHz STOP 849.00 MHz
#RES BW 30 kHz #VBW 100 kHz SWP 86.7 msec

RETLIF TESTING LABORATORIES

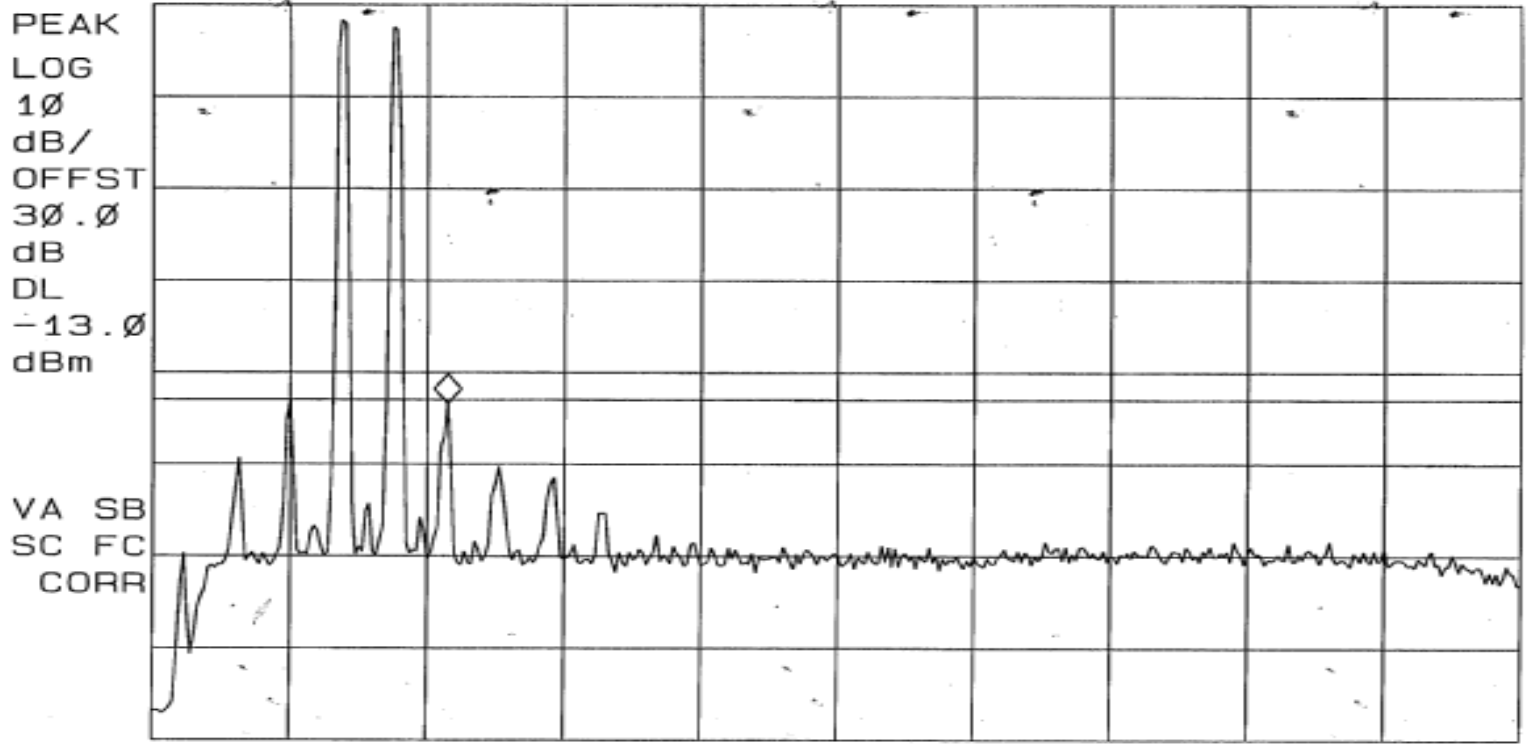
EMISSIONS DATA SHEET

Test Method:	Intermodulation Characteristics		
Customer:	Cellular Specialties, Inc.	Test Sample:	Digital Repeater
Model No:	CSI-DSP85-1W-C	Serial No:	ENG060007
Test Specification:	FCC Part 2	Paragraph: 2.1047	Date: 9/12/2006
Operating Mode:	Amplifying input signal		
	Amps Band - TDMA - Uplink		

09:56:14 SEP 12, 2006

MKR 828.59 MHz
-13.40 dBm

REF 30.0 dBm AT 10 dB



START 823.00 MHz

#RES BW 30 KHz

#VBW 100 KHz

STOP 849.00 MHz

SWP 86.7 msec

RETLIF TESTING LABORATORIES

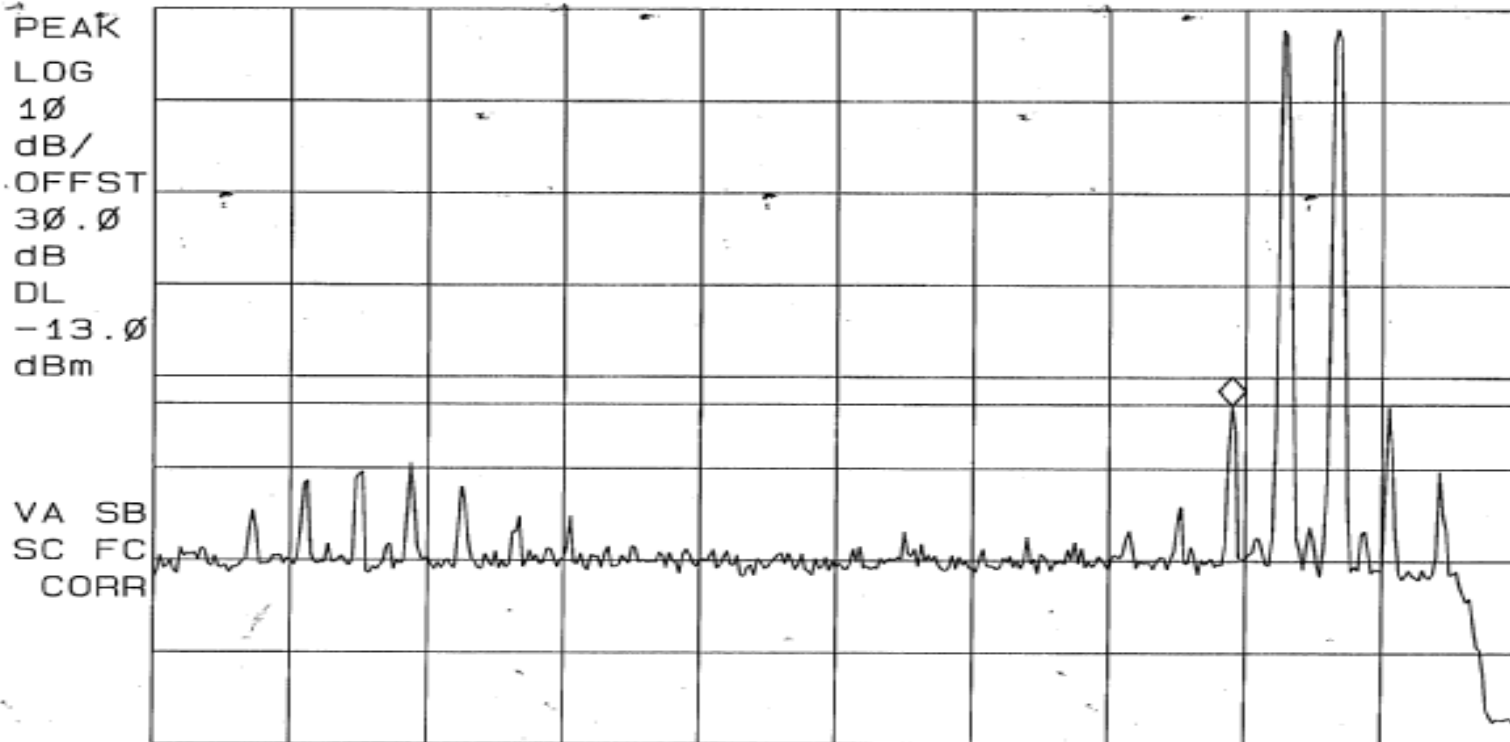
EMISSIONS DATA SHEET

Test Method:	Intermodulation Characteristics		
Customer:	Cellular Specialties, Inc.	Test Sample:	Digital Repeater
Model No:	CSI-DSP85-1W-C	Serial No:	ENG060007
Test Specification:	FCC Part 2	Paragraph: 2.1047	Date:
Operating Mode:	Amplifying input signal		
Notes:	Amps Band - TDMA - Uplink		
Job No:	R-4681N-1		Technician:
		M.Seamans	

09:45:00 SEP 12, 2006

MKR 844.54 MHz
-13.08 dBm

REF 30.0 dBm AT 10 dB



START 824.00 MHz

#RES BW 30 kHz

#VBW 100 kHz

STOP 850.00 MHz

SWP 86.7 msec

RETLIF TESTING LABORATORIES

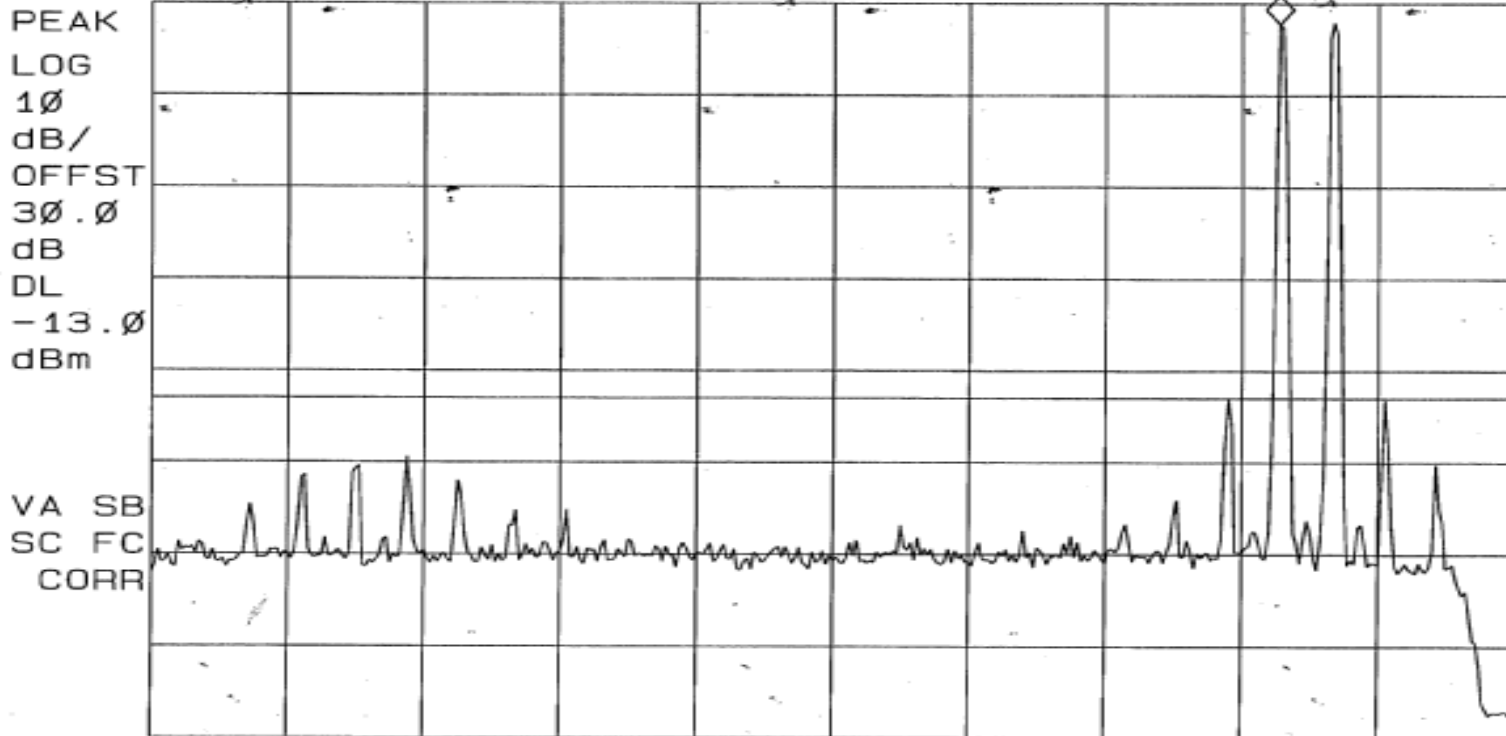
EMISSIONS DATA SHEET

Test Method:	Intermodulation Characteristics			
Customer:	Cellular Specialties, Inc.	Test Sample:	Digital Repeater	
Model No:	CSI-DSP85-1W-C	Serial No:	ENG060007	
Test Specification:	FCC Part 2	Paragraph:	2.1047	
Operating Mode:	Amplifying input signal			
Notes:	Amps Band - TDMA - Uplink			
Job No:	R-4681N-1		Technician:	M.Seamans
Date:	9/12/2006			

09:39:18 SEP 12, 2006

REF 30.0 dBm AT 10 dB

MKR 845.52 MHz
27.76 dBm



START 824.00 MHz
#RES BW 30 KHz

#VBW 100 KHz

STOP 850.00 MHz
SWP 86.7 msec

RETLIF TESTING LABORATORIES

EMISSIONS DATA SHEET

Test Method:	Intermodulation Characteristics			
Customer:	Cellular Specialties, Inc.	Test Sample:	Digital Repeater	
Model No:	CSI-DSP85-1W-C	Serial No:	ENG060007	
Test Specification:	FCC Part 2	Paragraph:	2.1047	
Operating Mode:	Amplifying input signal			
Notes:	Amps Band - TDMA - Uplink			
Job No:	R-4681N-1		Technician:	M.Seamans
Date:	9/12/2006			

09:39:01 SEP 12, 2006

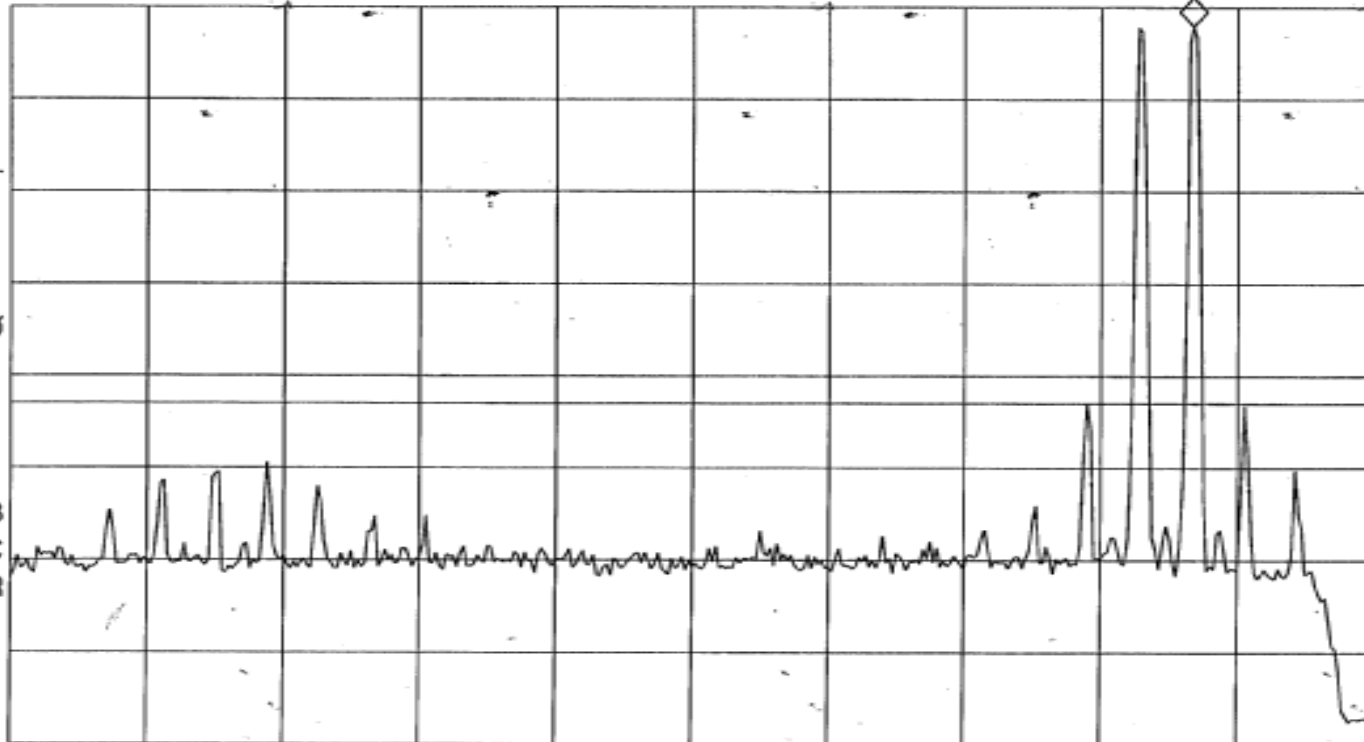
REF 30.0 dBm

AT 10 dB

MKR 846.56 MHz
27.92 dBm

PEAK
LOG
10
dB/
OFFST
30.0
dB
DL
-13.0
dBm

VA SB
SC FC
CORR



START 824.00 MHz

#RES BW 30 kHz

#VBW 100 kHz

STOP 850.00 MHz

SWP 86.7 msec

RETLIF TESTING LABORATORIES

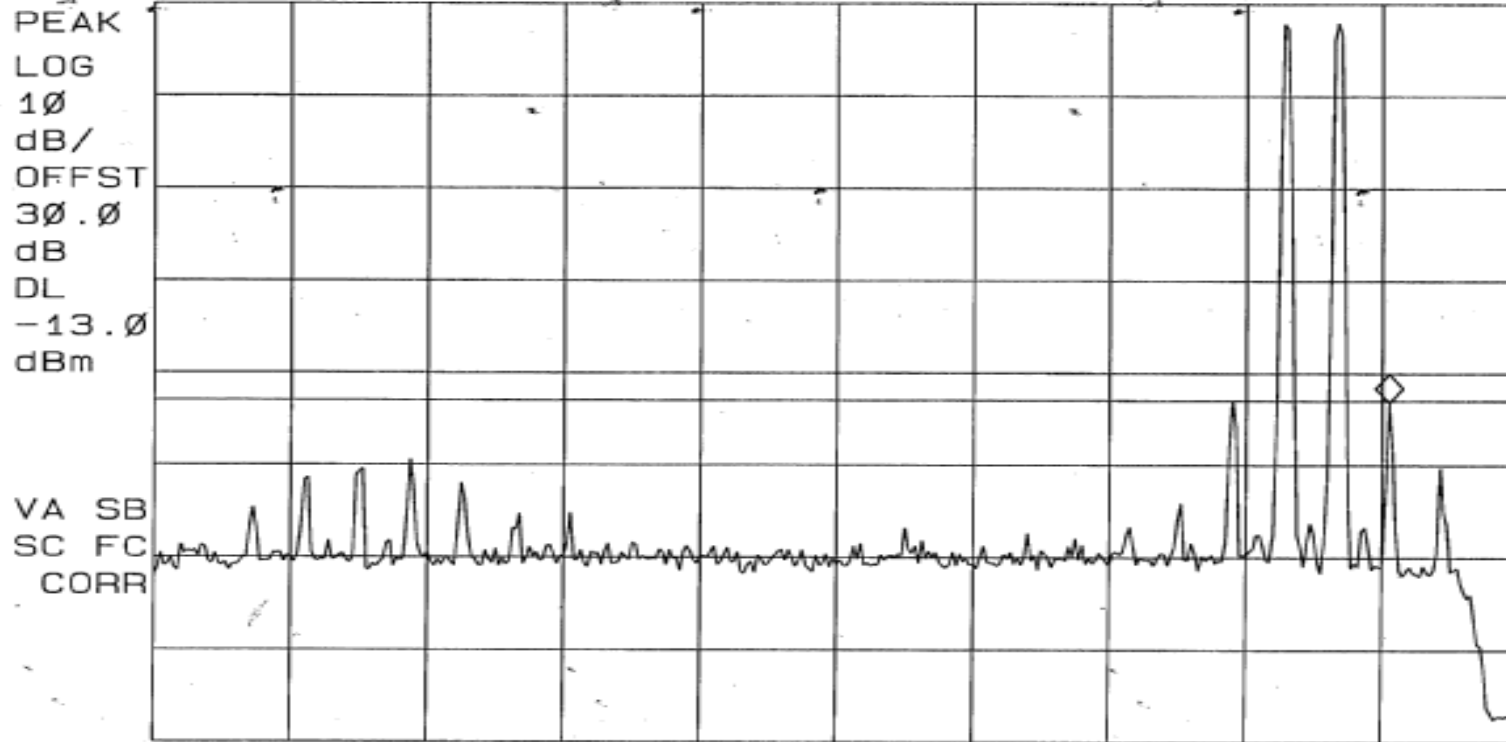
EMISSIONS DATA SHEET

Test Method:	Intermodulation Characteristics				
Customer:	Cellular Specialties, Inc.	Test Sample:	Digital Repeater	Job No:	R-4681N-1
Model No:	CSI-DSP85-1W-C	Serial No:	ENG060007	Technician:	M.Seamans
Test Specification:	FCC Part 2	Paragraph:	2.1047	Date:	9/12/2006
Operating Mode:	Amplifying input signal				
Notes:	Amps Band - TDMA - Uplink				

09:38:52 SEP 12, 2006

MKR 847.53 MHz
-13.23 dBm

REF 30.0 dBm AT 10 dB



START 824.00 MHz

#RES BW 30 kHz

#VBW 100 kHz

STOP 850.00 MHz

SWP 86.7 msec

RETLIF TESTING LABORATORIES

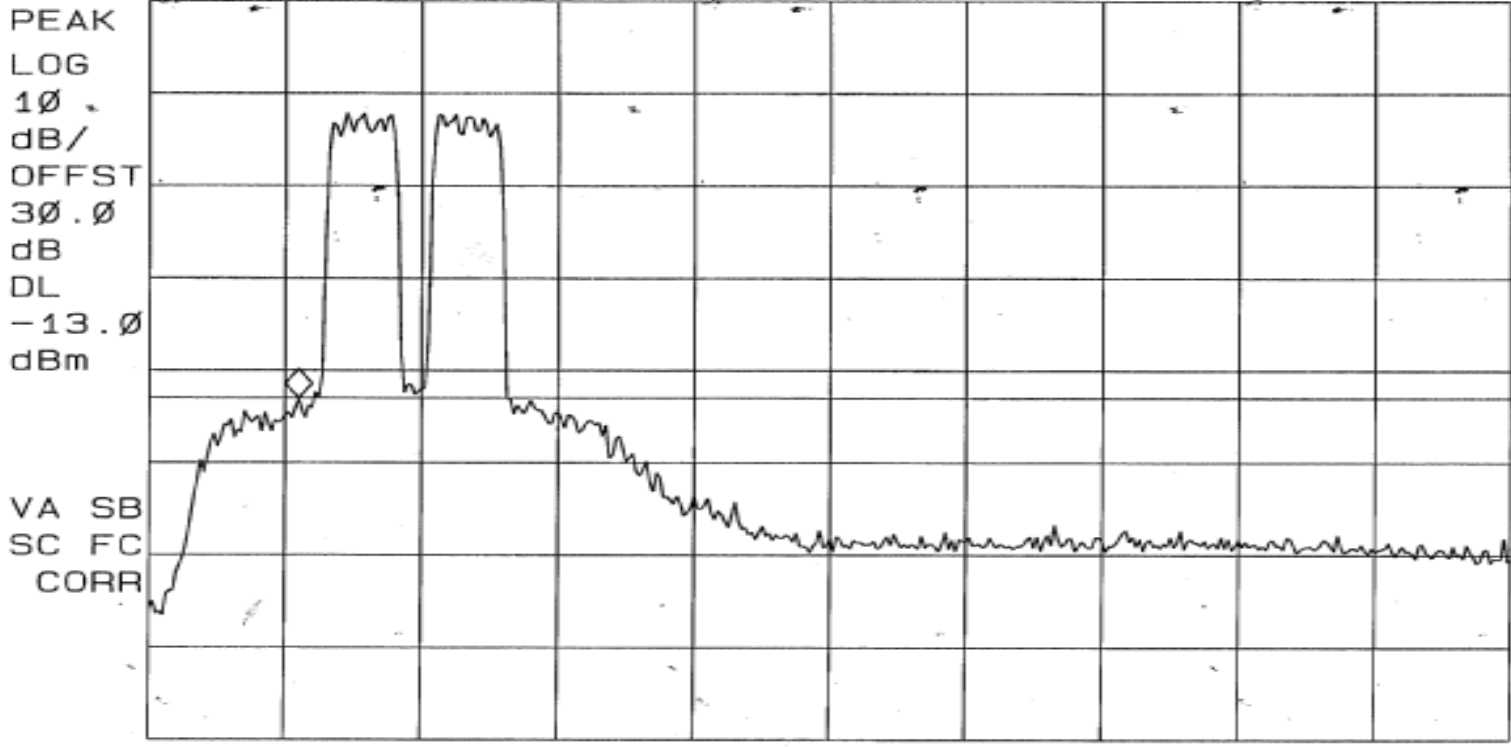
EMISSIONS DATA SHEET

Test Method:	Intermodulation Characteristics		
Customer:	Cellular Specialties, Inc.	Test Sample:	Digital Repeater
Model No:	CSI-DSP85-1W-C	Serial No:	ENG060007
Test Specification:	FCC Part 2	Paragraph:	2.1047
Operating Mode:	Amplifying input signal		
Notes:	Amps Band -CDMA - Uplink		
	Job No:	R-4681N-1	
	Technician:	M.Seamans	
	Date:	9/12/2006	

09: 24: 05 SEP 12, 2006

MKR 825.86 MHz
-13.04 dBm

REF 30.0 dBm AT 10 dB



CENTER 836.00 MHz SPAN 26.00 MHz
#RES BW 30 kHz #VBW 100 kHz SWP 86.7 msec

RETLIF TESTING LABORATORIES

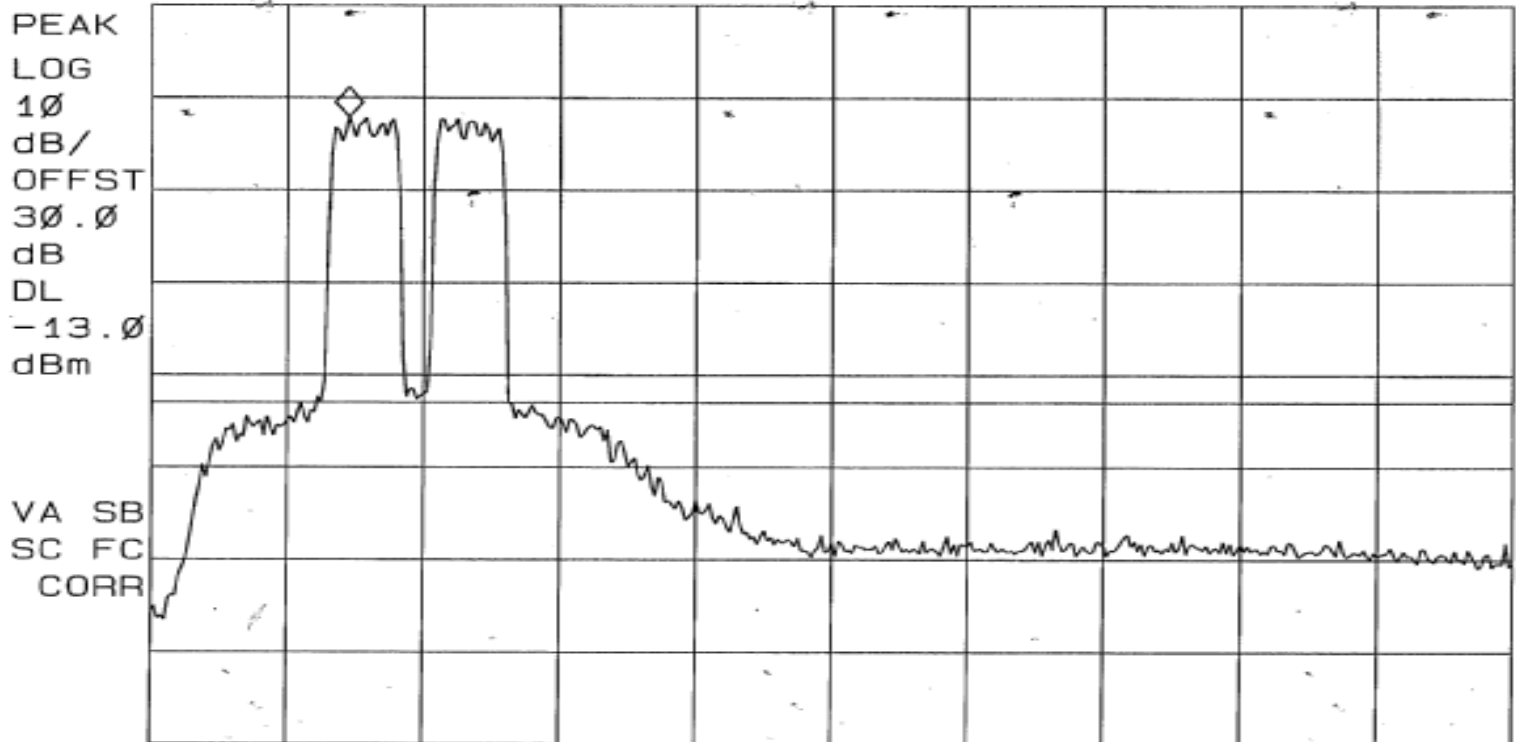
EMISSIONS DATA SHEET

Test Method:	Intermodulation Characteristics		
Customer:	Cellular Specialties, Inc.	Test Sample:	Digital Repeater
Model No:	CSI-DSP85-1W-C	Serial No:	ENG060007
Test Specification:	FCC Part 2	Paragraph: 2.1047	Date:
Operating Mode:	Amplifying input signal		
Notes:	Amps Band -CDMA - Uplink		

09: 23: 34 SEP 12, 2006

MKR 826.77 MHz
17.92 dBm

REF 30.0 dBm AT 10 dB



CENTER 836.00 MHz
#RES BW 30 kHz

#VBW 100 kHz

SPAN 26.00 MHz
SWP 86.7 msec

RETLIF TESTING LABORATORIES

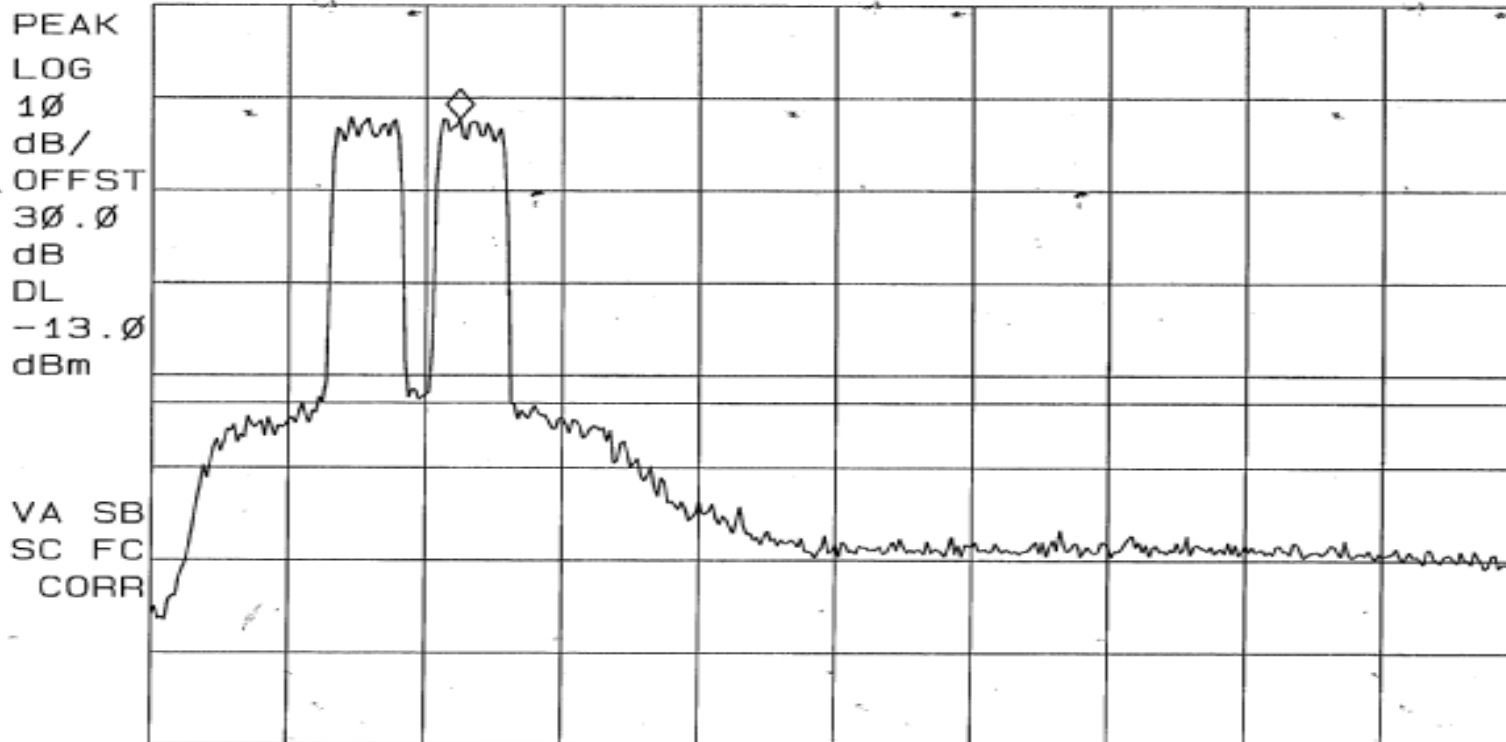
EMISSIONS DATA SHEET

Test Method:	Intermodulation Characteristics		
Customer:	Cellular Specialties, Inc.	Test Sample:	Digital Repeater
Model No:	CSI-DSP85-1W-C	Serial No:	ENG060007
Test Specification:	FCC Part 2	Paragraph:	2.1047
Operating Mode:	Amplifying input signal		
Notes:	Amps Band -CDMA - Uplink		
	Job No:	R-4681N-1	
	Technician:	M.Seamans	
	Date:	9/12/2006	

09:23:28 SEP 12, 2006

MKR 828.85 MHz
17.73 dBm

REF 30.0 dBm AT 10 dB



CENTER 836.00 MHz
#RES BW 30 kHz

#VBW 100 kHz

SPAN 26.00 MHz
SWP 86.7 msec

RETLIF TESTING LABORATORIES

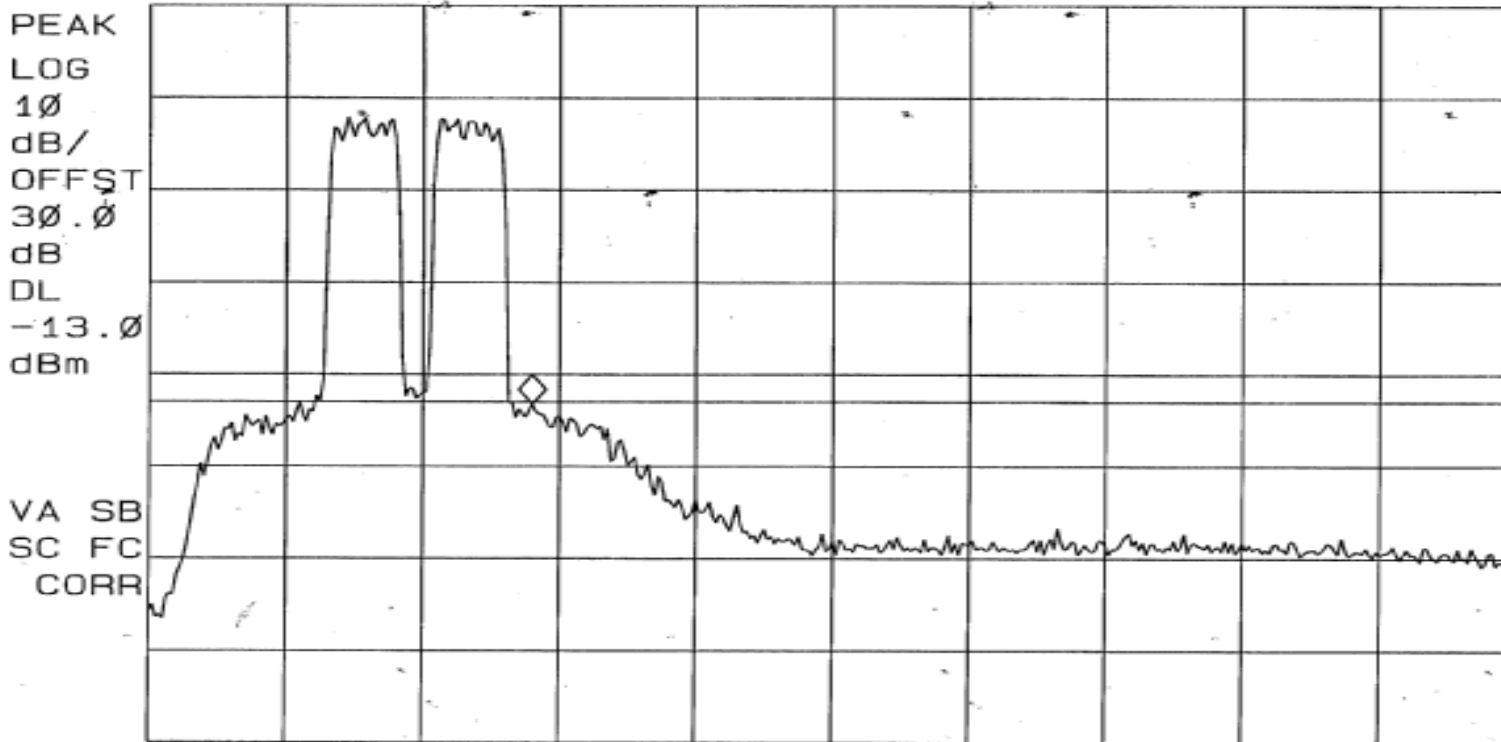
EMISSIONS DATA SHEET

Test Method:	Intermodulation Characteristics		
Customer:	Cellular Specialties, Inc.	Test Sample:	Digital Repeater
Model No:	CSI-DSP85-1W-C	Serial No:	ENG060007
Test Specification:	FCC Part 2	Paragraph: 2.1047	Date: 9/12/2006
Operating Mode:	Amplifying input signal		
Notes:	Amps Band -CDMA - Uplink		

09: 23: 11 SEP 12, 2006

MKR 830.28 MHz
-13.24 dBm

REF 30.0 dBm AT 10 dB



CENTER 836.00 MHz
#RES BW 30 KHz

#VBW 100 KHz

SPAN 26.00 MHz
SWP 86.7 msec

RETLIF TESTING LABORATORIES

EMISSIONS DATA SHEET

Test Method:	Intermodulation Characteristics		
Customer:	Cellular Specialties, Inc.	Test Sample:	Digital Repeater
Model No:	CSI-DSP85-1W-C	Serial No:	ENG060007
Test Specification:	FCC Part 2	Paragraph: 2.1047	Date:
Operating Mode:	Amplifying input signal		
Notes:	Amps Band -CDMA - Uplink		
Job No:	R-4681N-1	Technician:	M.Seamans

09:32:23 SEP 12, 2006

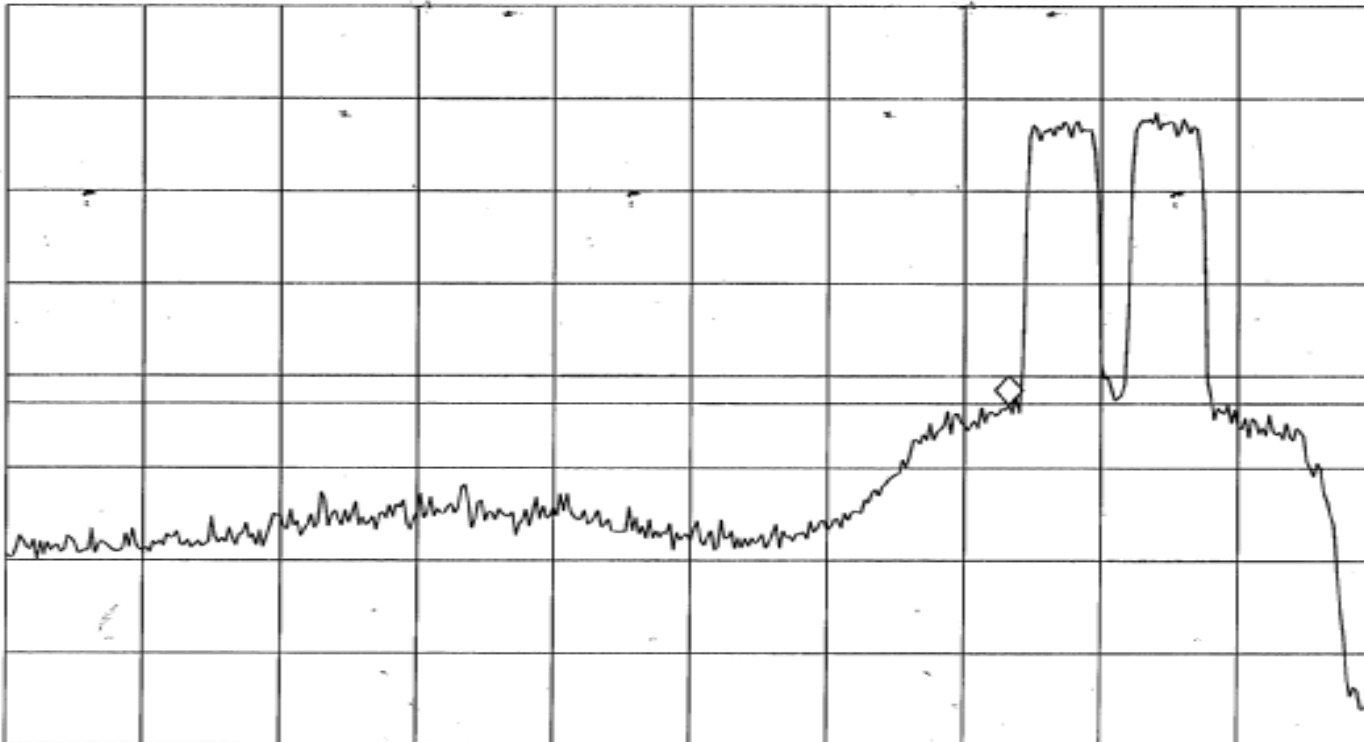
MKR 843.05 MHz
-13.12 dBm

REF 30.0 dBm

AT 10 dB

PEAK
LOG
10
dB/
OFFST
30.0
dB
DL
-13.0
dBm

VA SB
SC FC
CORR



START 824.00 MHz

#RES BW 30 kHz

#VBW 100 kHz

STOP 850.00 MHz

SWP 86.7 msec

RETLIF TESTING LABORATORIES

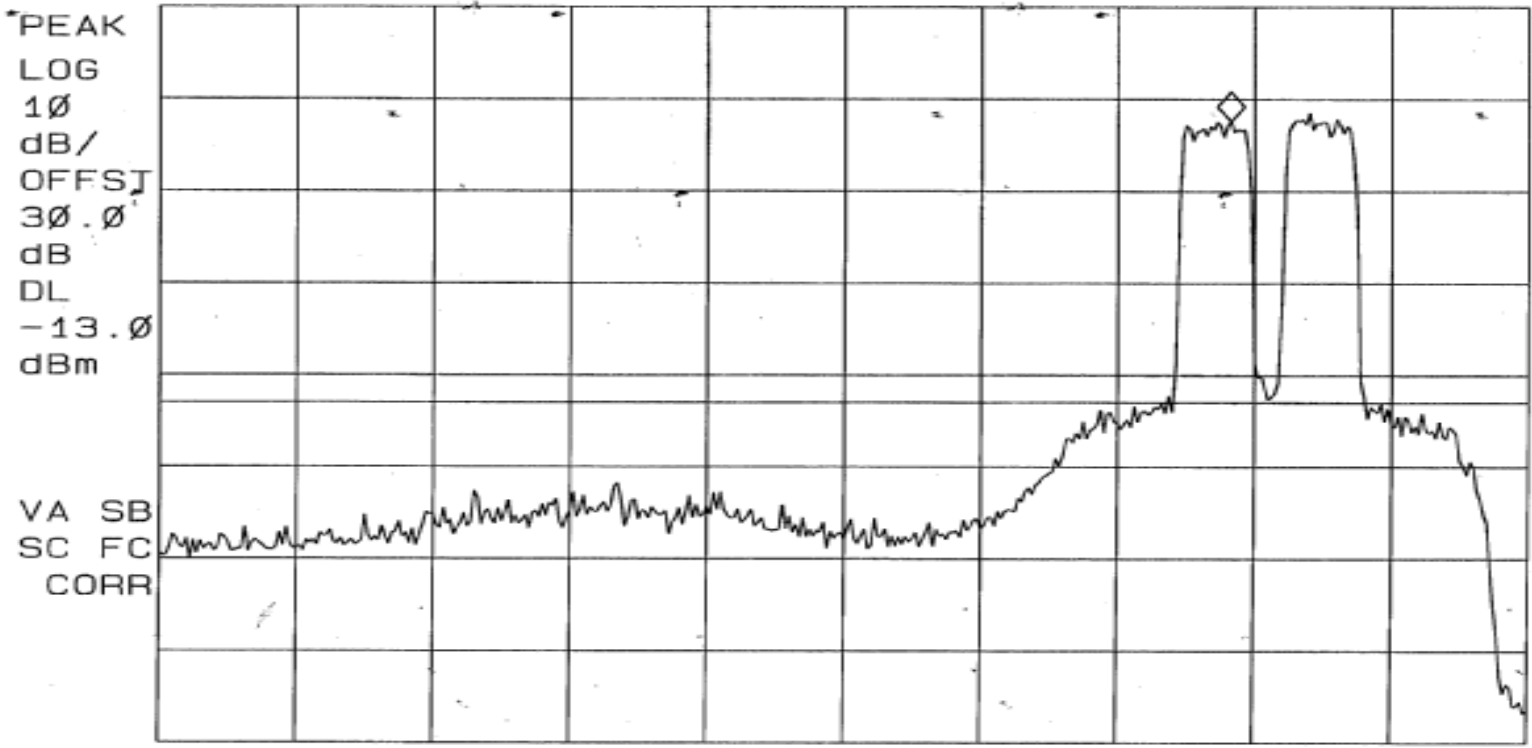
EMISSIONS DATA SHEET

Test Method:	Intermodulation Characteristics		
Customer:	Cellular Specialties, Inc.	Test Sample:	Digital Repeater
Model No:	CSI-DSP85-1W-C	Serial No:	ENG060007
Test Specification:	FCC Part 2	Paragraph: 2.1047	Date:
Operating Mode:	Amplifying input signal		
Notes:	Amps Band -CDMA - Uplink		
Job No:	R-4681N-1	Technician:	M.Seamans

09:32:33 SEP 12, 2006

MKR 844.35 MHz
17.61 dBm

REF 30.0 dBm AT 10 dB



#RES BW 30 kHz #VBW 100 kHz SWP 86.7 msec

RETLIF TESTING LABORATORIES

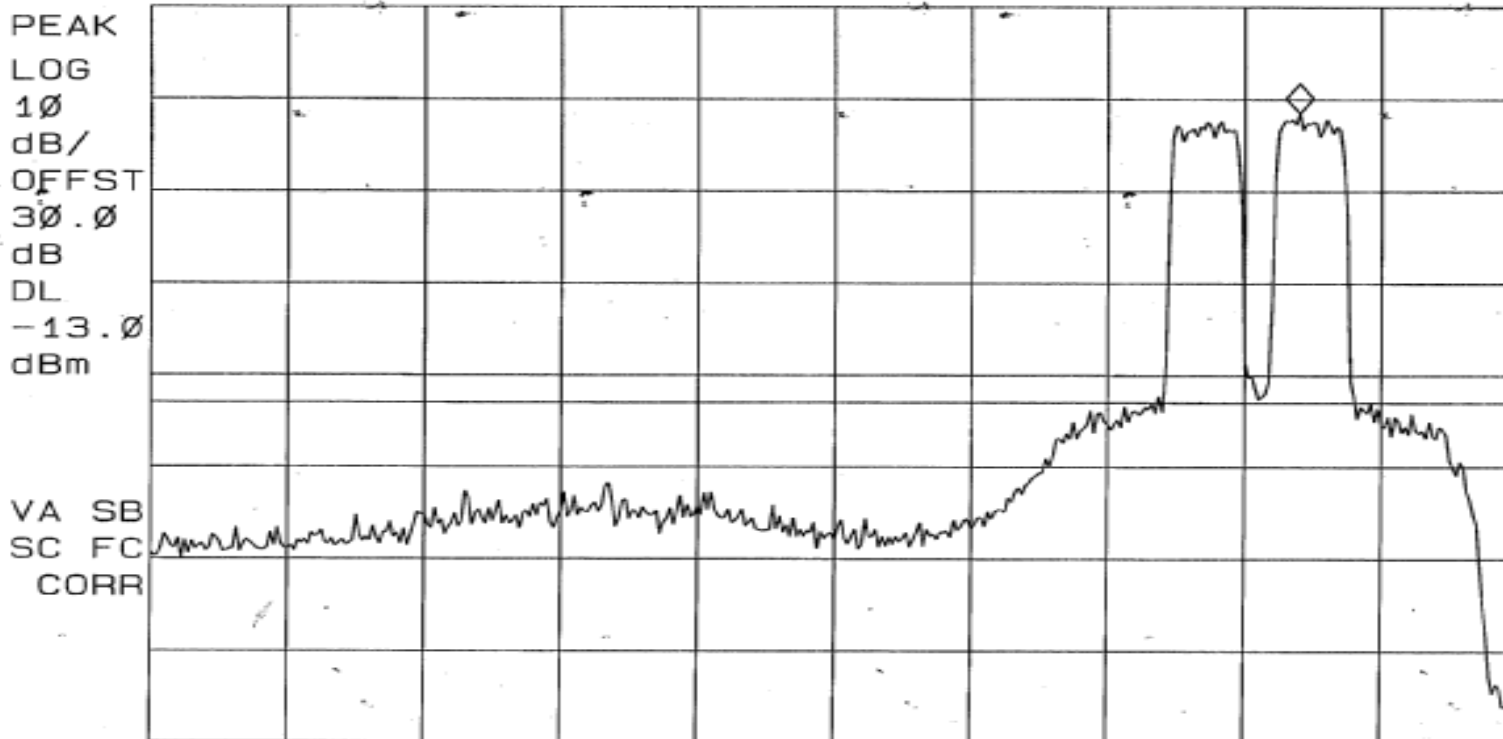
EMISSIONS DATA SHEET

Test Method:	Intermodulation Characteristics		
Customer:	Cellular Specialties, Inc.	Test Sample:	Digital Repeater
Model No:	CSI-DSP85-1W-C	Serial No:	ENG060007
Test Specification:	FCC Part 2	Paragraph: 2.1047	Date:
Operating Mode:	Amplifying input signal		
Notes:	Amps Band -CDMA - Uplink		
Job No:	R-4681N-1	Technician:	M.Seamans

09: 32: 47 SEP 12, 2006

MKR 845.84 MHz
18.51 dBm

REF 30.0 dBm AT 10 dB



START 824.00 MHz

#RES BW 30 KHz

#VBW 100 KHz

STOP 850.00 MHz

SWP 86.7 msec

RETLIF TESTING LABORATORIES

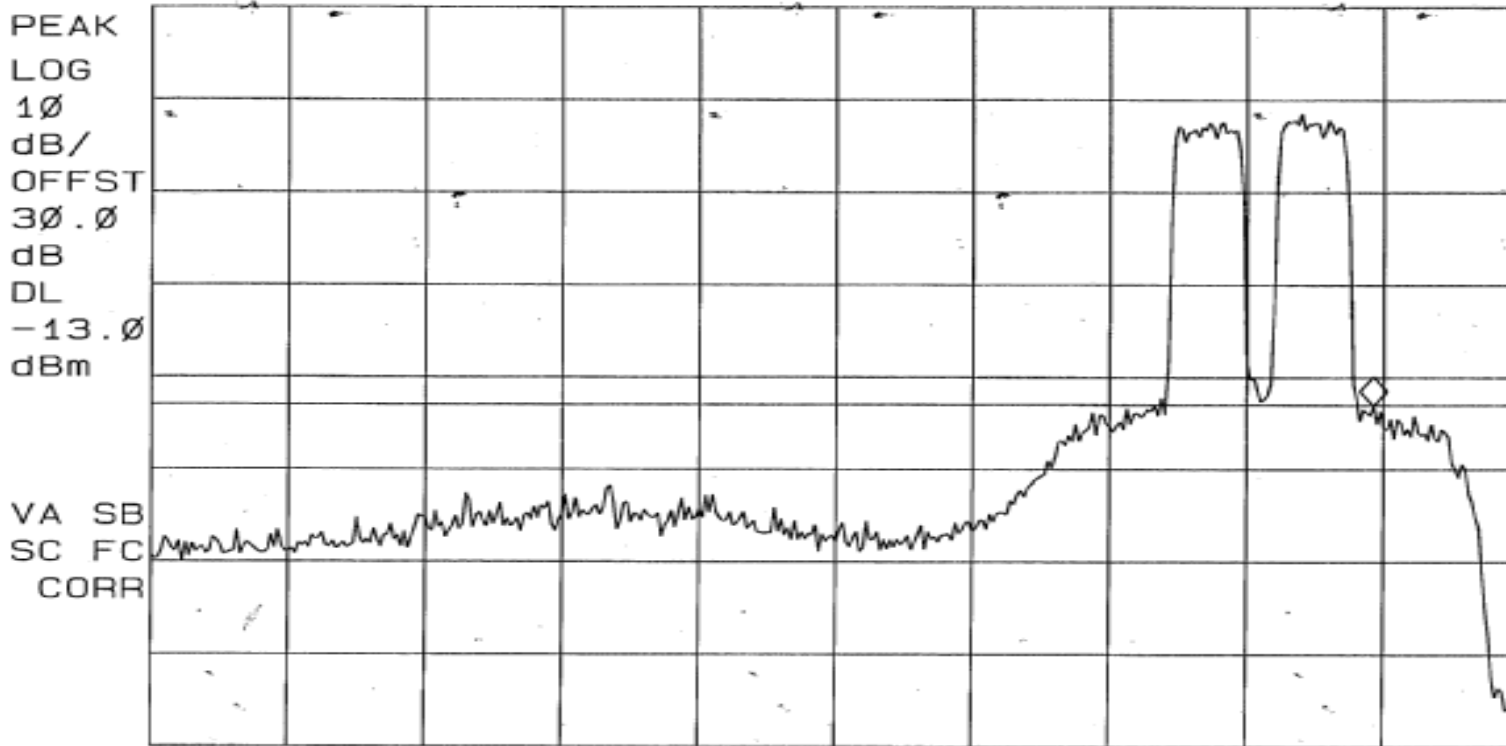
EMISSIONS DATA SHEET

Test Method:	Intermodulation Characteristics		
Customer:	Cellular Specialties, Inc.	Test Sample:	Digital Repeater
Model No:	CSI-DSP85-1W-C	Serial No:	ENG060007
Test Specification:	FCC Part 2	Paragraph: 2.1047	Date:
Operating Mode:	Amplifying input signal		
Notes:	Amps Band -CDMA - Uplink		
Job No:	R-4681N-1	Technician:	M.Seamans

09:33:17 SEP 12, 2006

MKR 847.21 MHz
-13.10 dBm

REF 30.0 dBm AT 10 dB



START 824.00 MHz #RES BW 30 KHz #VBW 100 KHz SWP 86.7 msec STOP 850.00 MHz

RETLIF TESTING LABORATORIES

EMISSIONS DATA SHEET

Test Method:	Intermodulation Characteristics		
Customer:	Cellular Specialties, Inc.	Test Sample:	Digital Repeater
Model No:	CSI-DSP85-1W-C	Serial No:	ENG060007
Test Specification:	FCC Part 2	Paragraph:	2.1047
Operating Mode:	Amplifying input signal		
Notes:	Amps Band - GSM - Uplink		
	Job No:	R-4681N-1	
	Technician:	M.Seamans	
	Date:	9/12/2006	

10:01:19 SEP 12, 2006

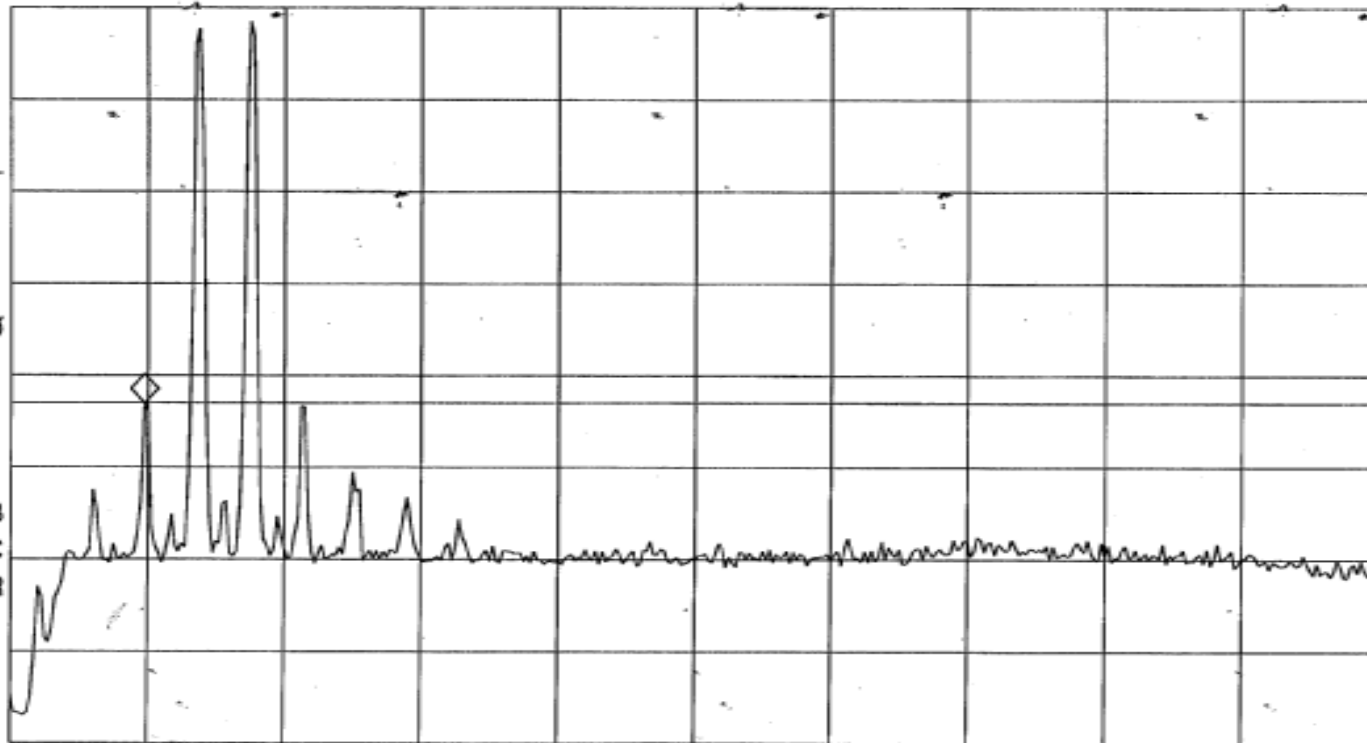
MKR 825.54 MHz
-13.07 dBm

REF 30.0 dBm

AT 10 dB

PEAK
LOG
10
dB/
OFFST
30.0
dB
DL
-13.0
dBm

VA SB
SC FC
CORR



START 823.00 MHz

#RES BW 30 kHz

#VBW 100 kHz

STOP 849.00 MHz

SWP 86.7 msec

RETLIF TESTING LABORATORIES

EMISSIONS DATA SHEET

Test Method:	Intermodulation Characteristics		
Customer:	Cellular Specialties, Inc.	Test Sample:	Digital Repeater
Model No:	CSI-DSP85-1W-C	Serial No:	ENG060007
Test Specification:	FCC Part 2	Paragraph: 2.1047	Date:
Operating Mode:	Amplifying input signal		
Notes:	Amps Band - GSM - Uplink		
Job No:	R-4681N-1	Technician:	M.Seamans

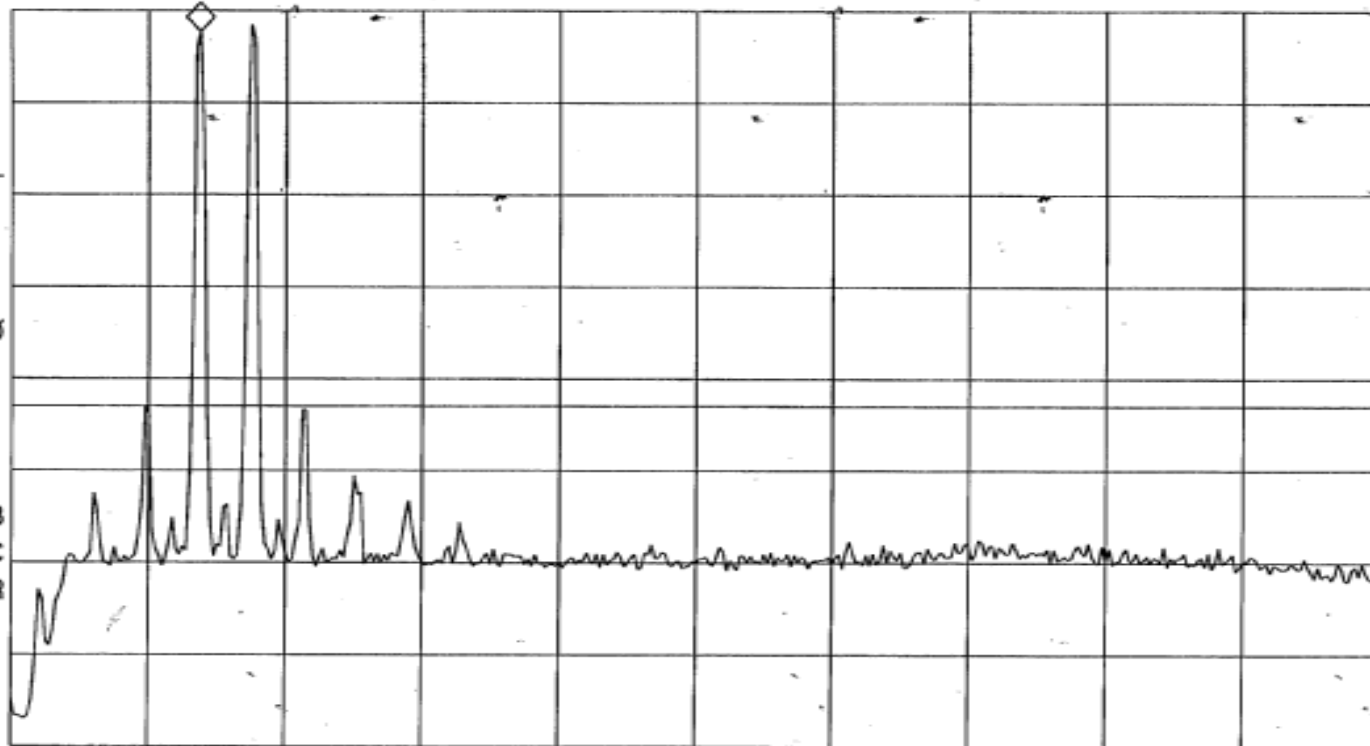
10:01:02 SEP 12, 2006

MKR 826.58 MHz
27.69 dBm

REF 30.0 dBm

AT 10 dB

PEAK
LOG
10
dB/
OFFST
30.0
dB
DL
-13.0
dBm



START 823.00 MHz

#RES BW 30 kHz

#VBW 100 kHz

STOP 849.00 MHz

SWP 86.7 msec