

Exhibit 5

SmartICE/CDPD

Point of Sale Terminal

Hypercom

FCC ID: NVA010164-005A

Photographs of the Equipment

Internal

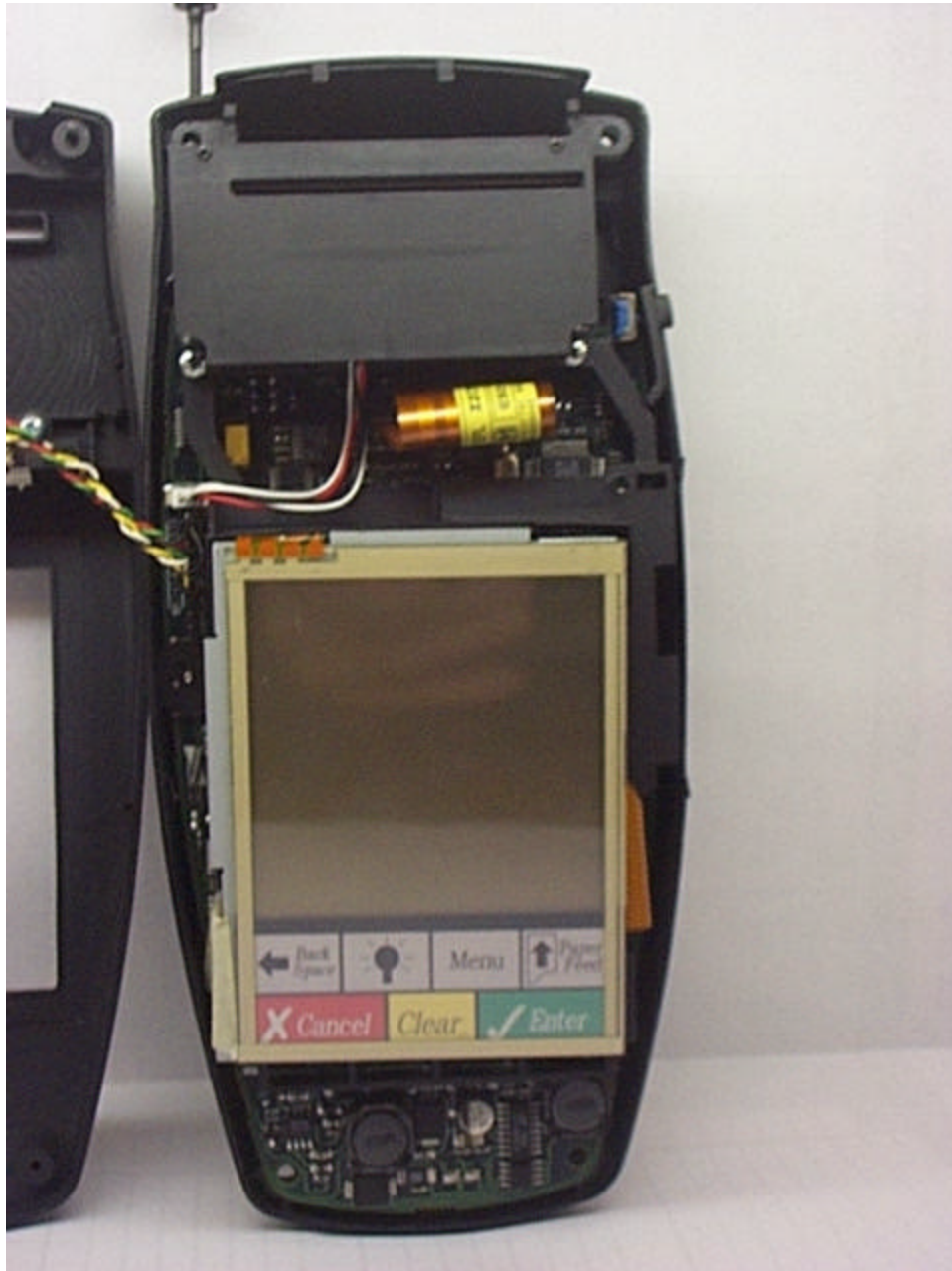
External



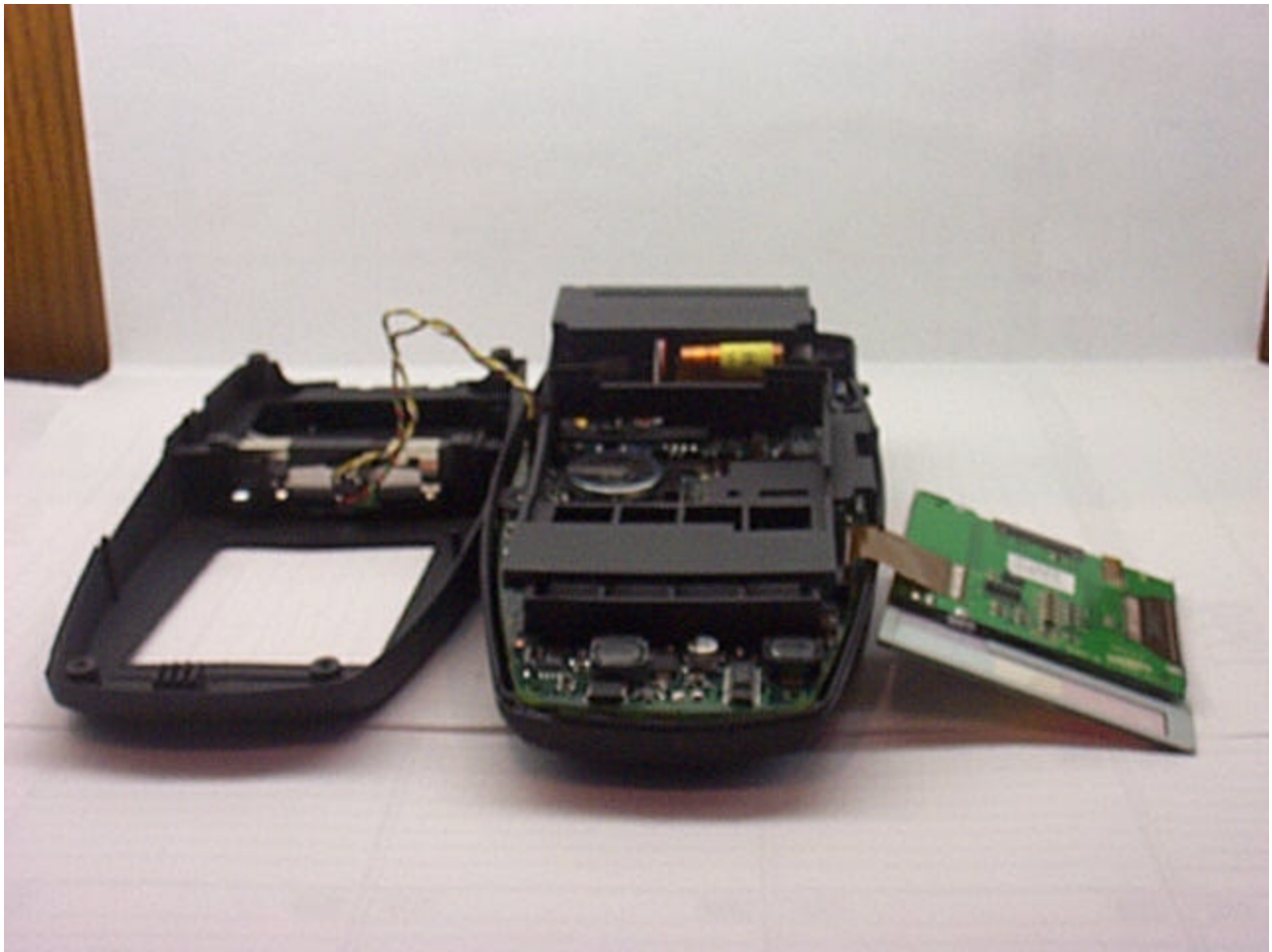
Hypercom Point of Sale Device SmartICE with a Novatel NRM-6832 transmitter CDPD: Front



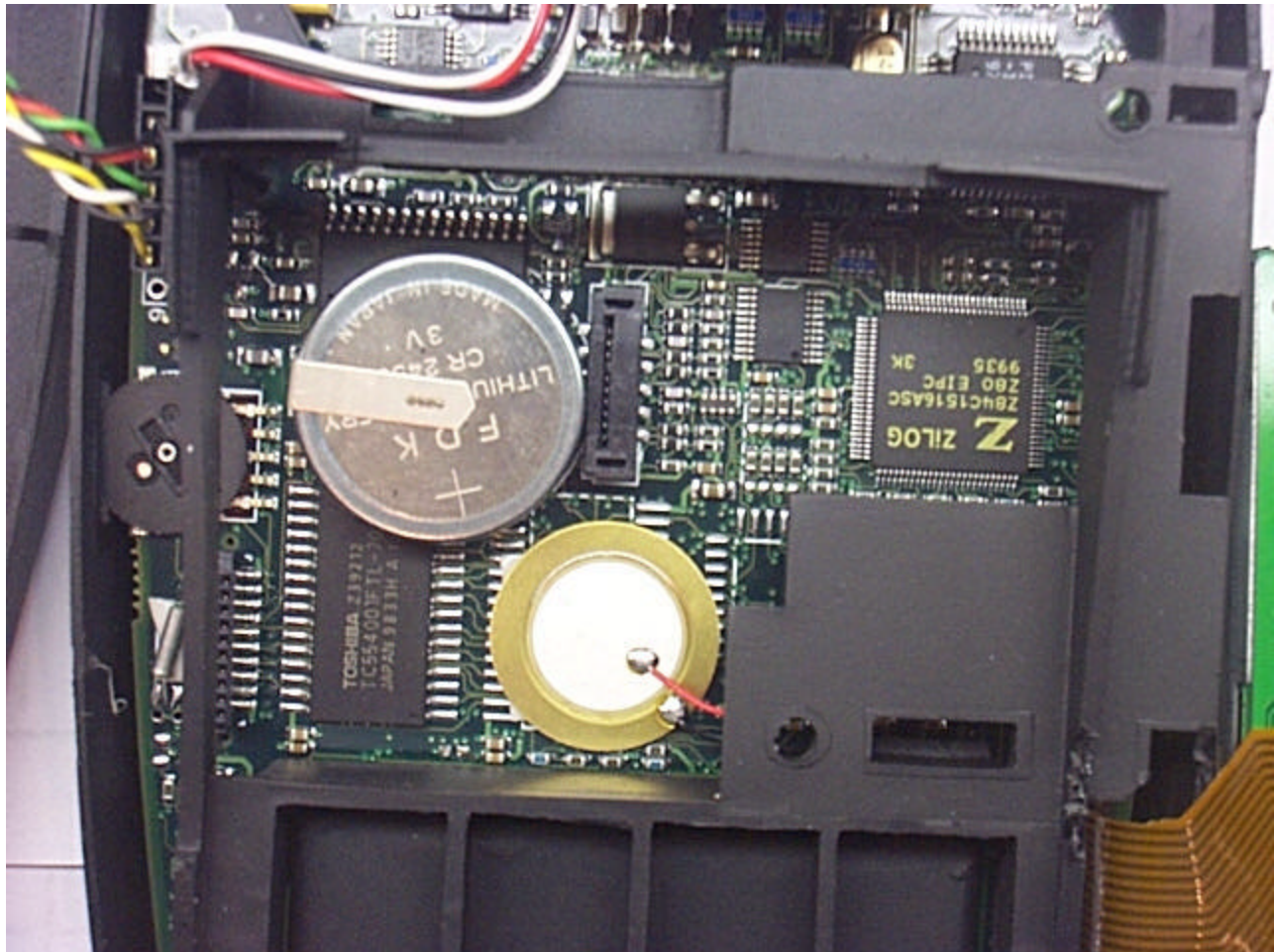
Hypercom Point of Sale Device SmartICE with a Novatel NRM-6832 transmitter CDPA: Front Open



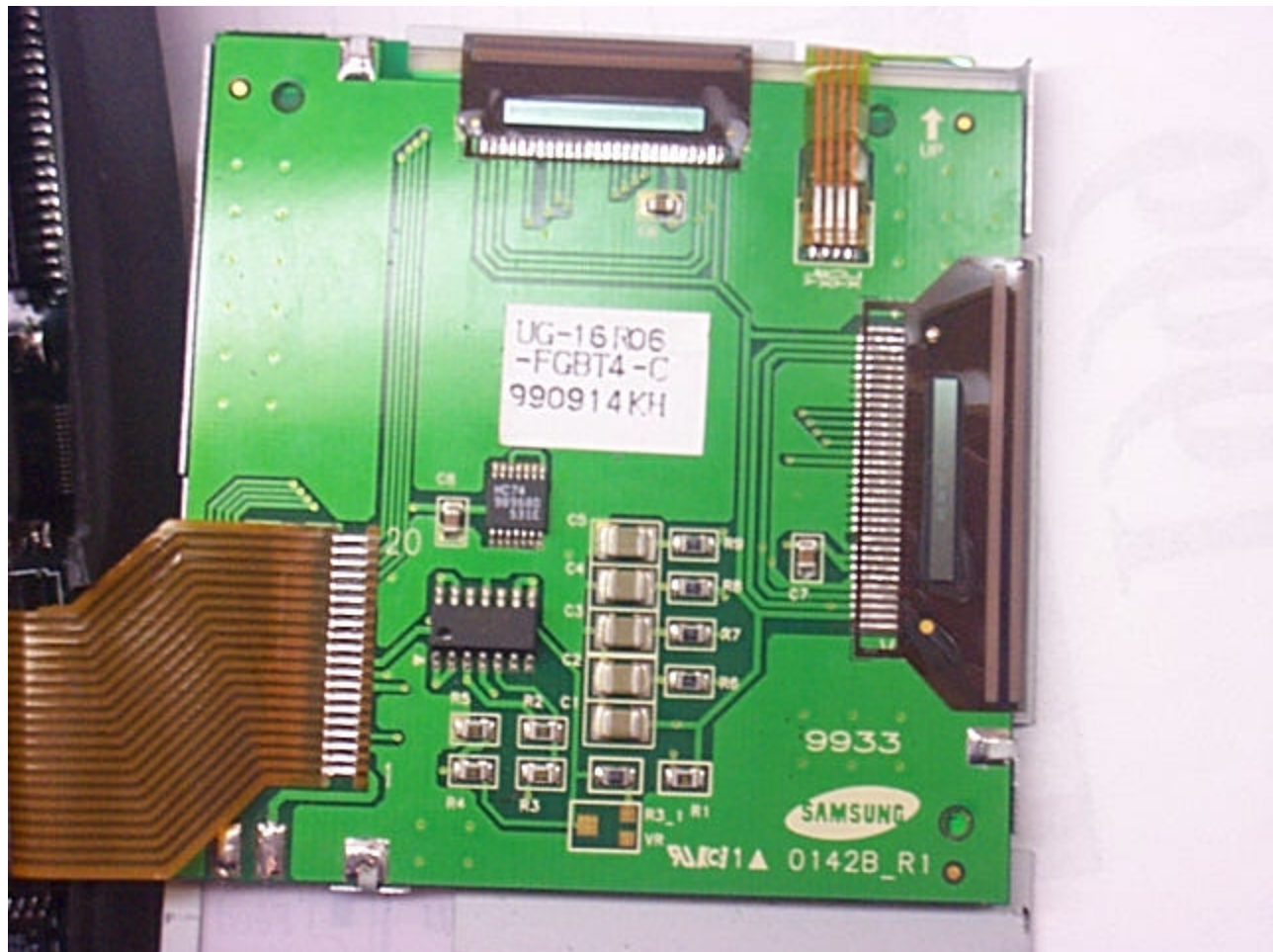
Hypercom Point of Sale Device SmartICE with a Novatel NRM-6832 transmitter CDPD: Front Open



Hypercom Point of Sale Device SmartICE with a Novatel NRM-6832 transmitter CDPD: Front Open



Hypercom Point of Sale Device SmartICE with a Novatel NRM-6832 transmitter CDPD: Front Open, detail, under screen



Hypercom Point of Sale Device SmartICE with a Novatel NRM-6832 transmitter CDPA: Front Open, detail, back of screen



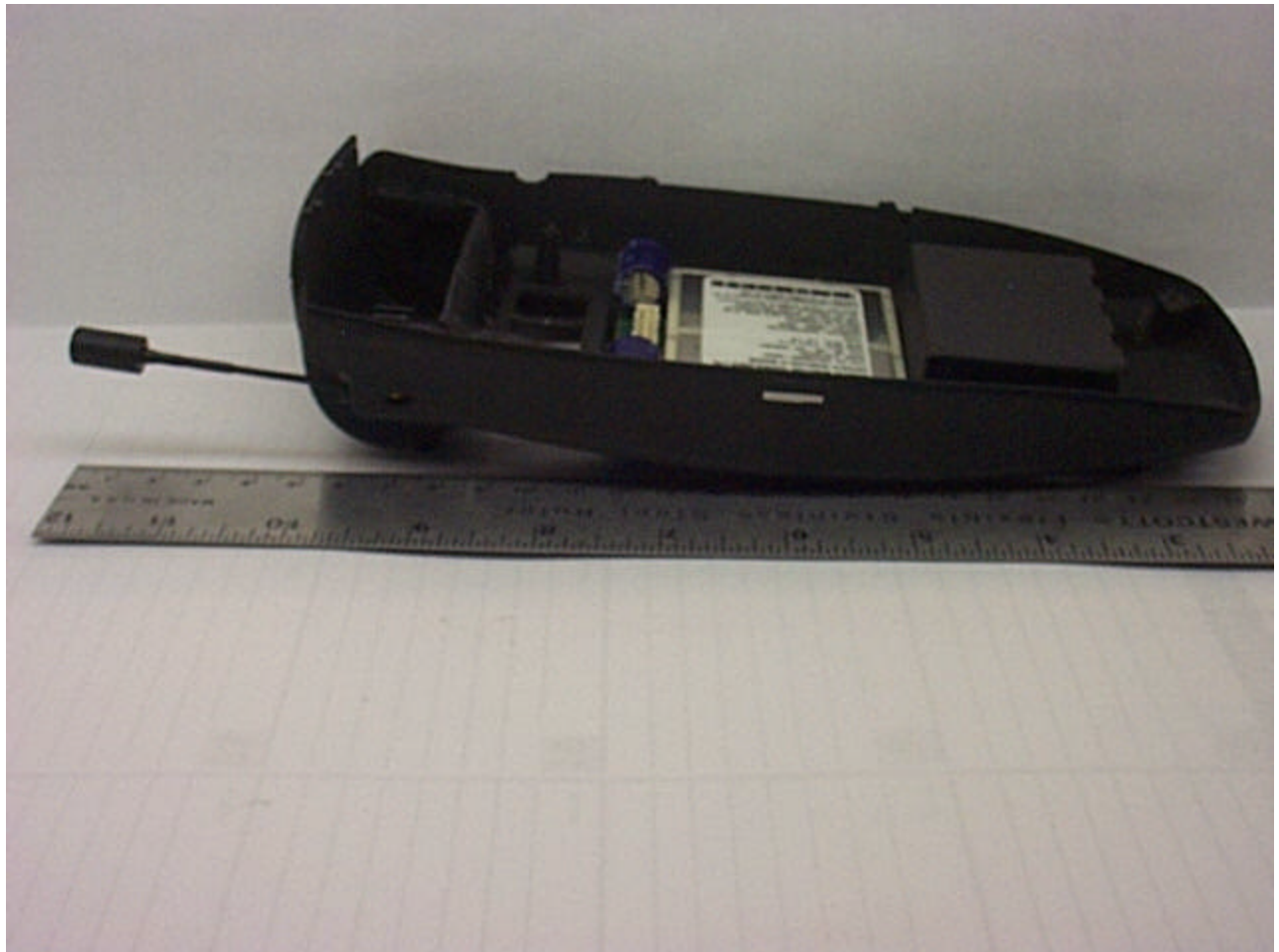
Hypercom Point of Sale Device SmartICE with a Novatel NRM-6832 transmitter CDPD: Left Profile



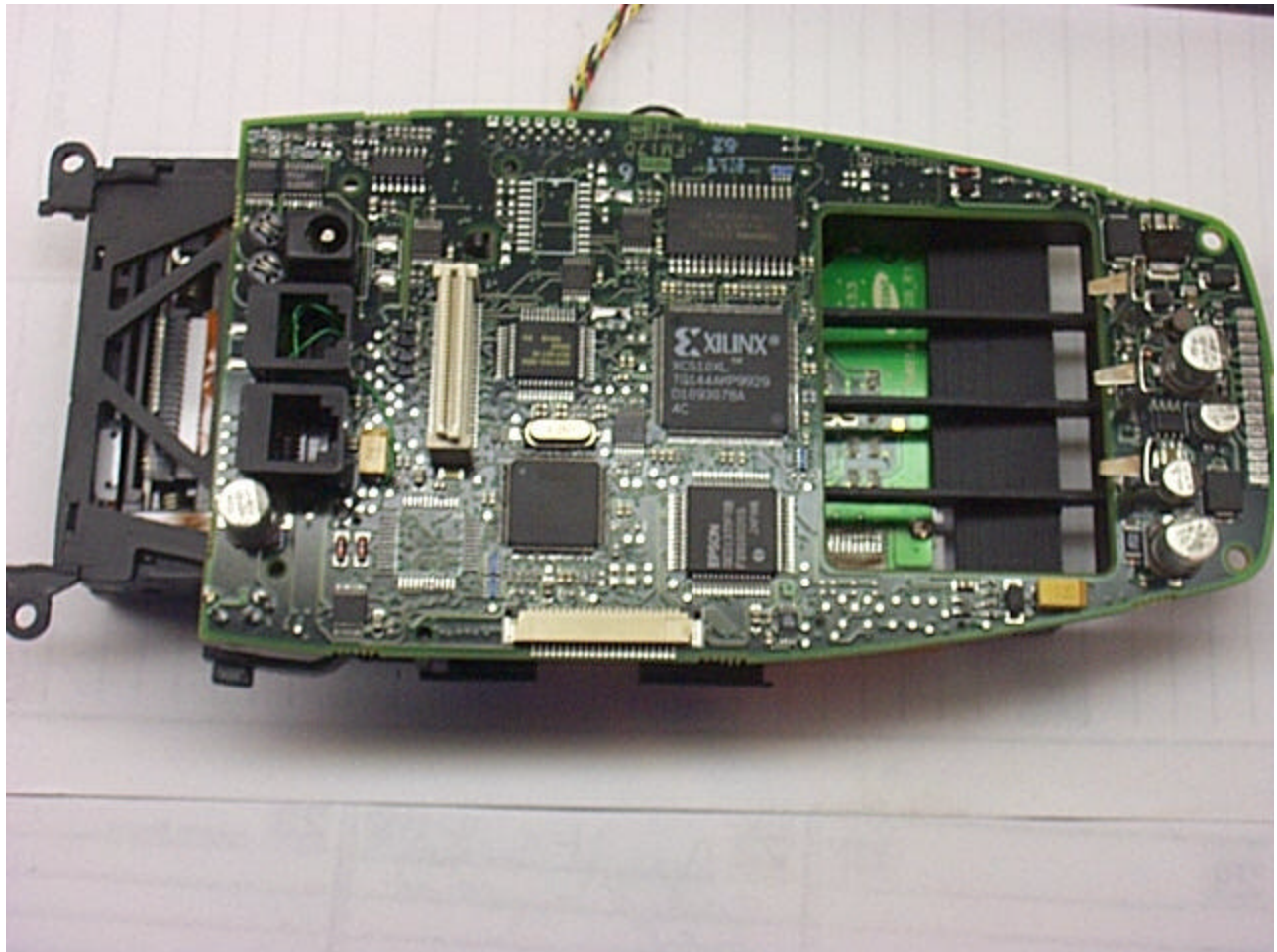
Hypercom Point of Sale Device SmartICE with a Novatel NRM-6832 transmitter CDPD: Back, battery compartment



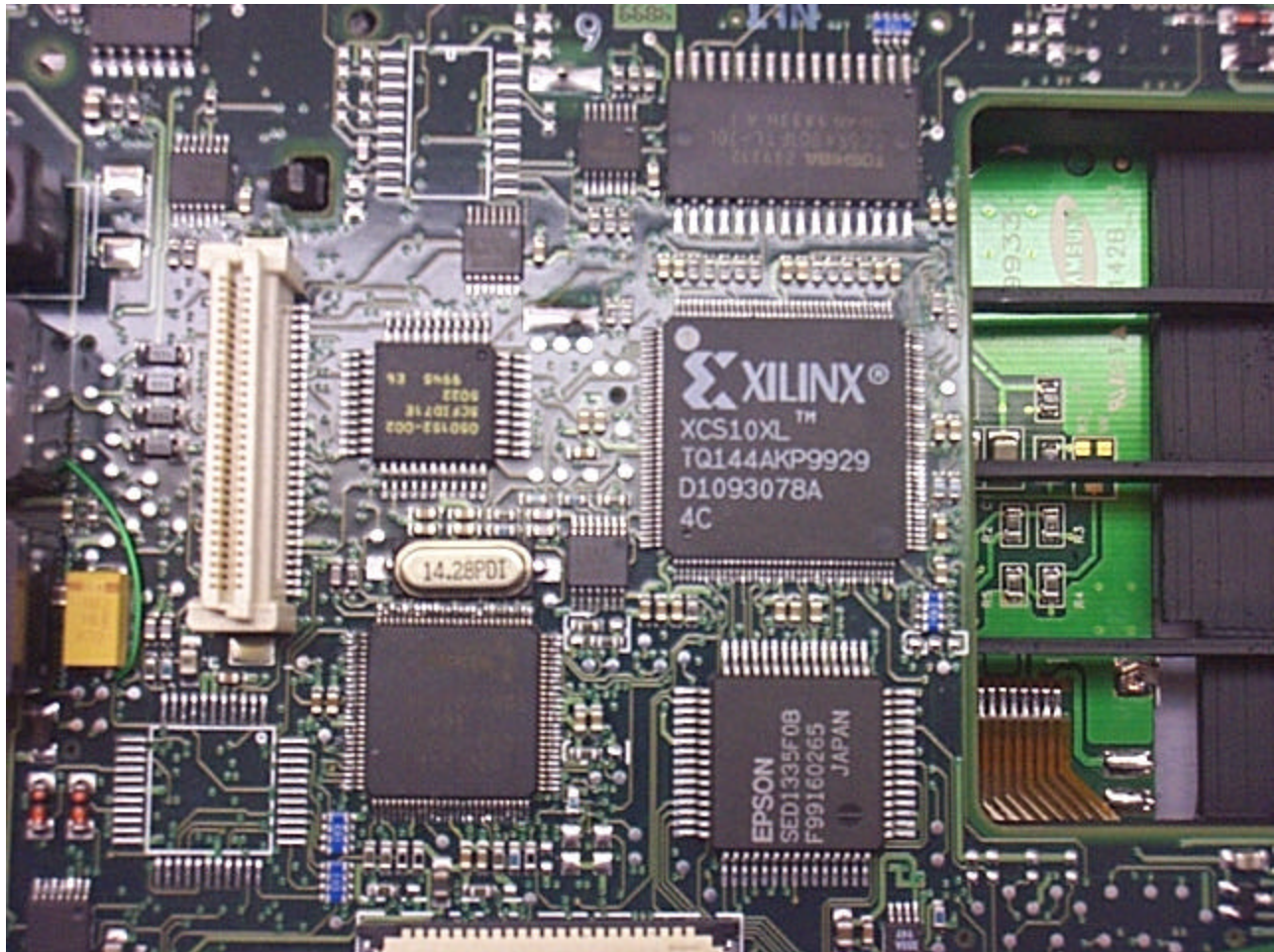
Hypercom Point of Sale Device SmartICE with a Novatel NRM-6832 transmitter CDPD: Back, battery.



Hypercom Point of Sale Device SmartICE with a Novatel NRM-6832 transmitter CDPD: Back Open



Hypercom Point of Sale Device SmartICE with a Novatel NRM-6832 transmitter CDPD: Back Open, Board connected to transmitter



Hypercom Point of Sale Device SmartICE with a Novatel NRM-6832 transmitter CDPA: Back Open, detail, Board connected to transmitter



Hypercom Point of Sale Device SmartICE with a Novatel NRM-6832 transmitter CDPD: Back Open, detail, transmitter

• CONSULTING • RESEARCH • TRAINING • CERTIFICATION TESTING SINCE 1981

APREL
Laboratories

