

Exhibit 5

SmartICE/MOBITEX

Point of Sale Terminal

Hypercom

FCC ID: NVA010164-004A

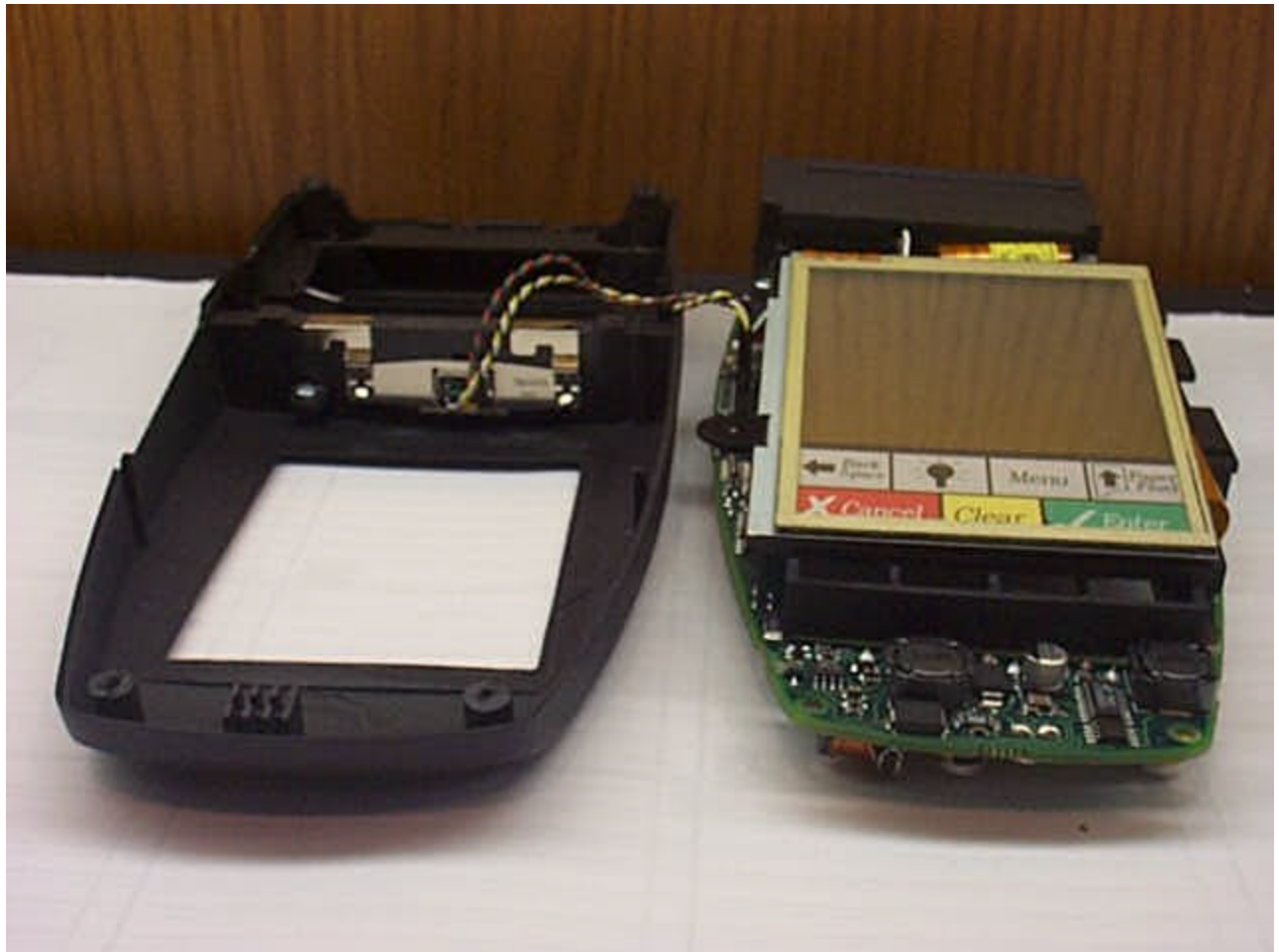
Photographs of the Equipment

Internal

External



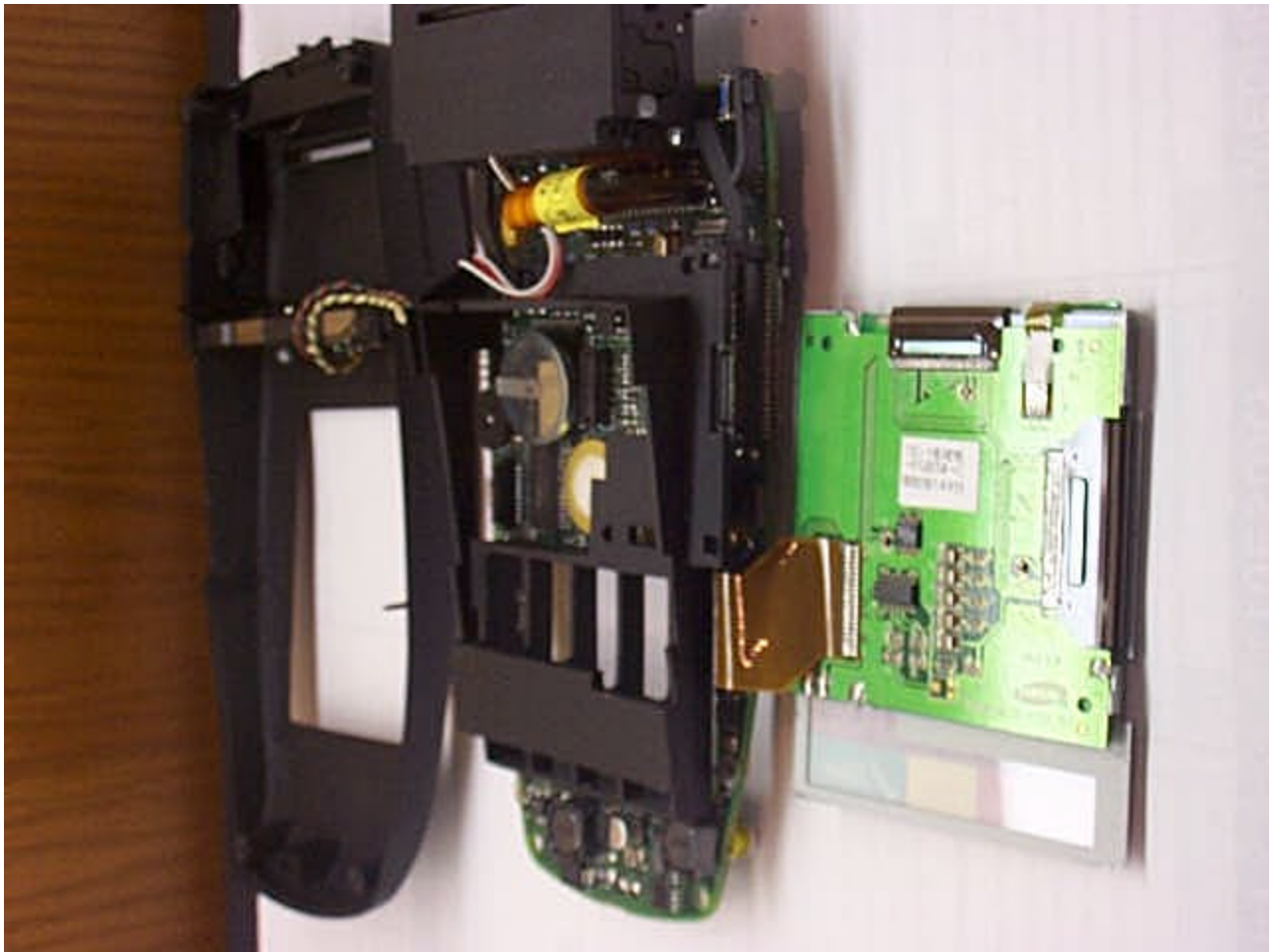
Hypercom Point of Sale Device, SmartICE with RIM R902M-2-0 Transmitter, Mobitex:: Front

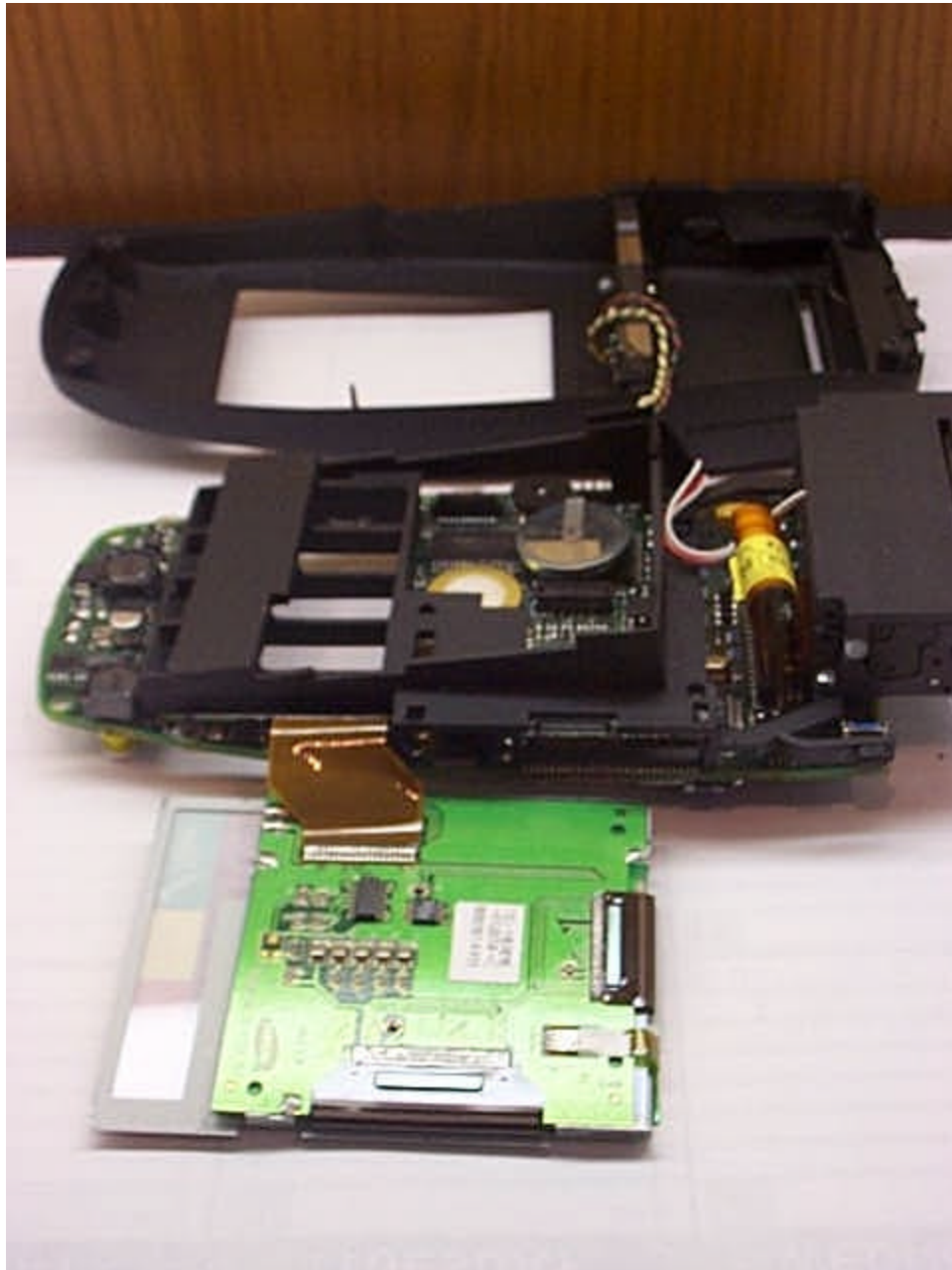


Hypercom Point of Sale Device, SmartICE with RIM R902M-2-0 Transmitter, Mobitex: Front open

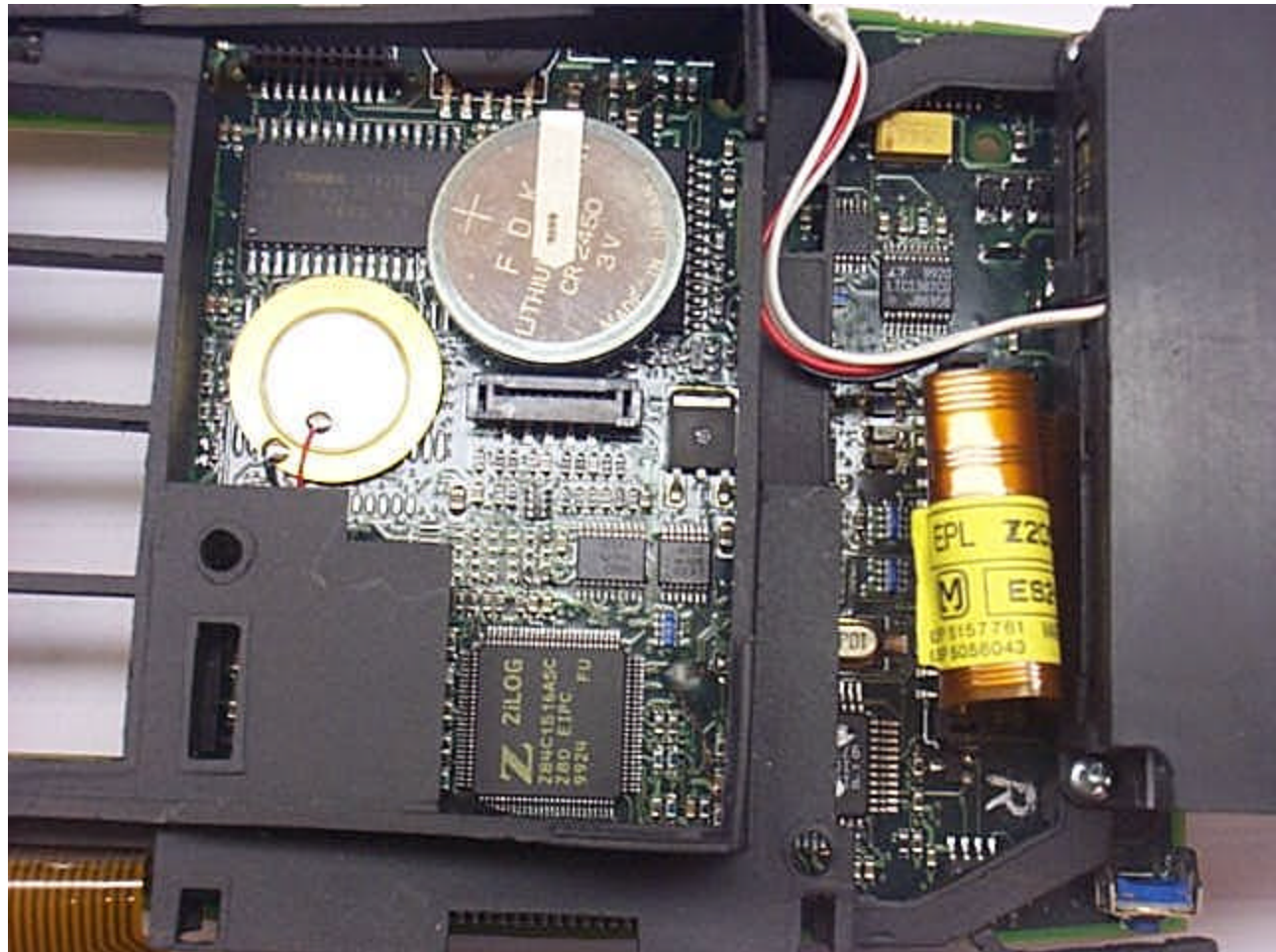
• CONSULTING • RESEARCH • TRAINING • CERTIFICATION TESTING SINCE 1981

APREL
Laboratories





Hypercom Point of Sale Device, SmartICE with RIM R902M-2-0 Transmitter, Mobitex: Front open



Hypercom Point of Sale Device, SmartICE with RIM R902M-2-0 Transmitter, Mobitex:Front open, detail, under screen



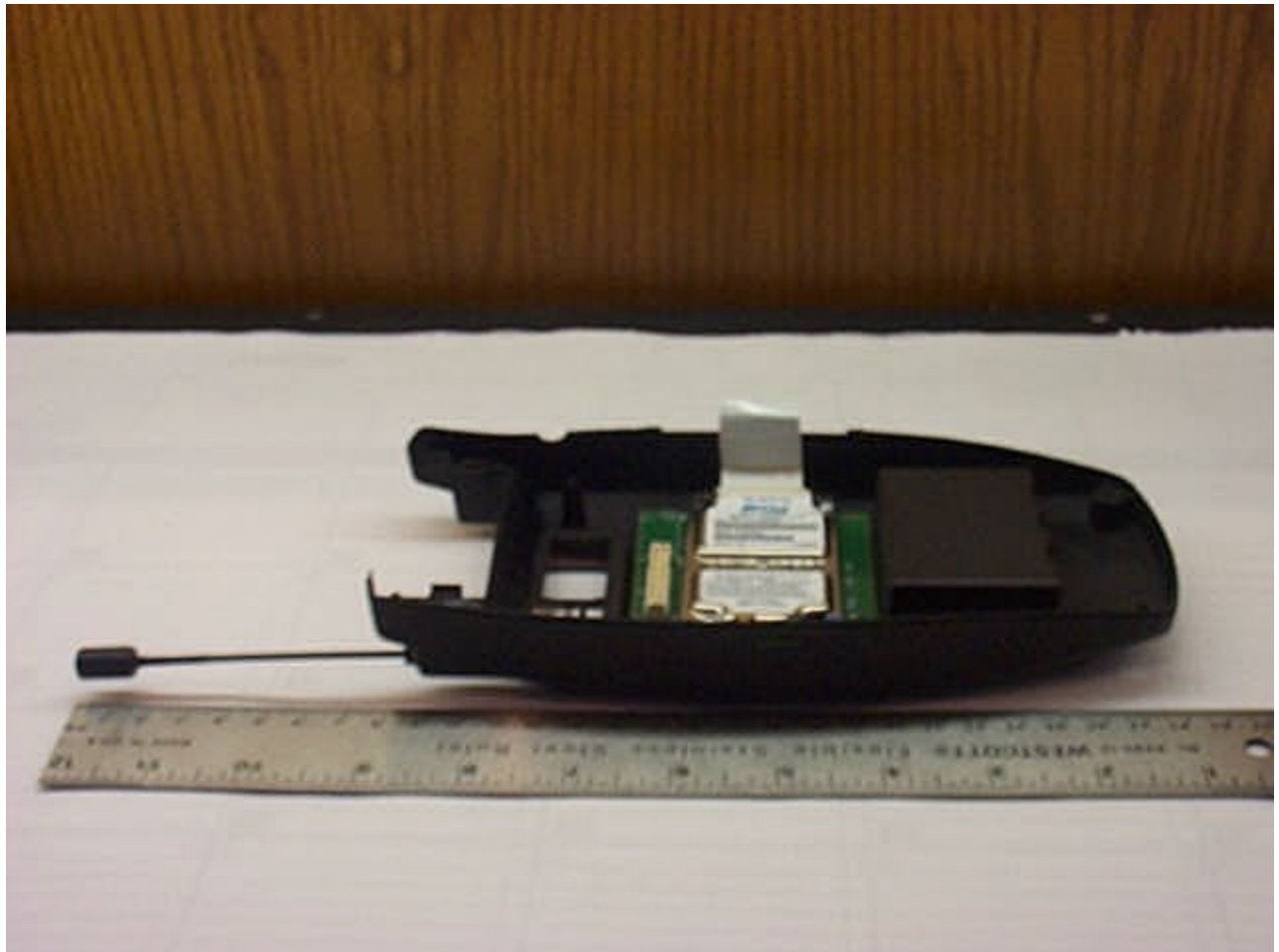
Hypercom Point of Sale Device, SmartICE with RIM R902M-2-0 Transmitter, Mobitex: Front open, detail, back of screen



Hypercom Point of Sale Device, SmartICE with RIM R902M-2-0 Transmitter, Mobitex:Back, battery compartment



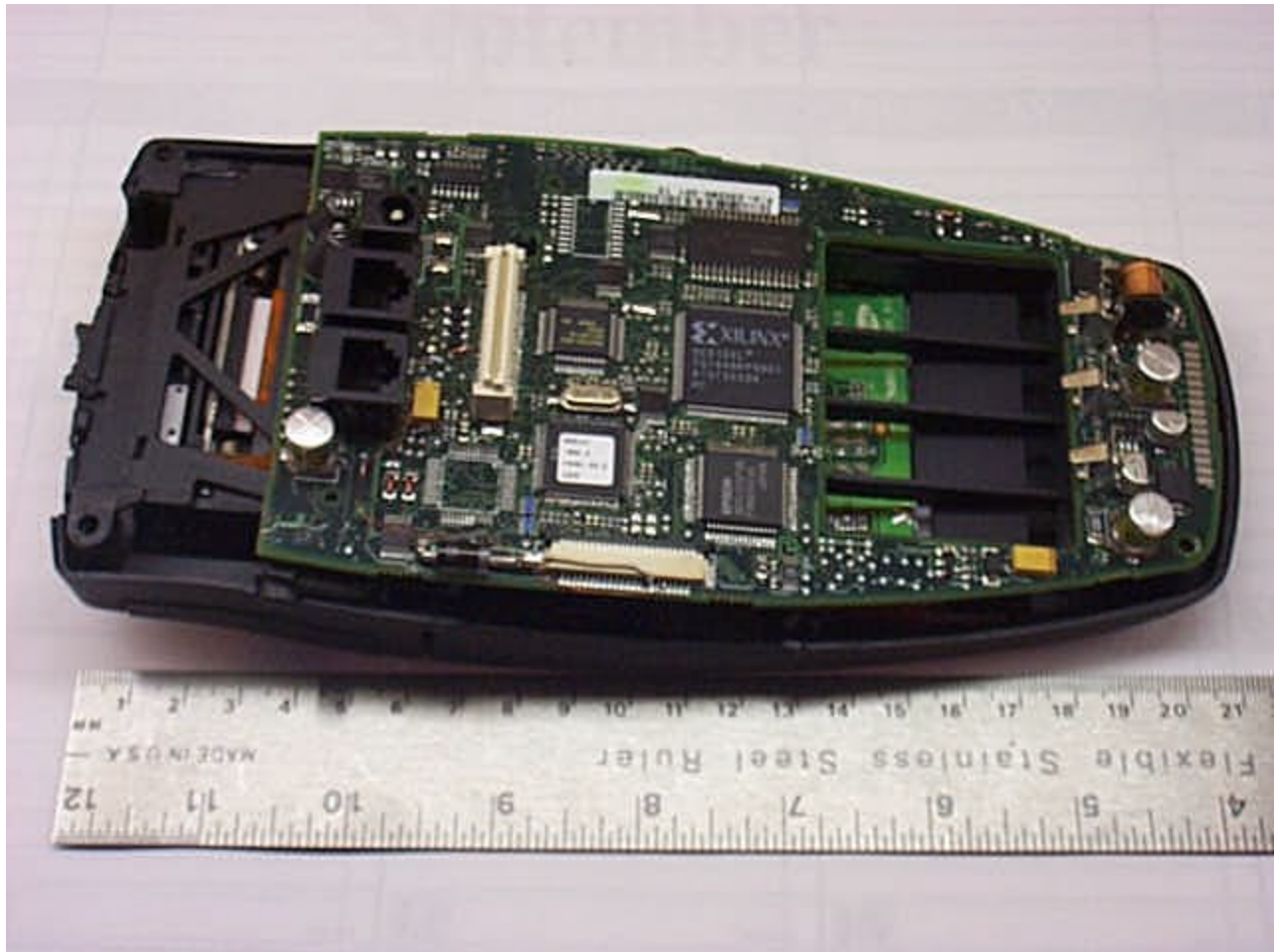
Hypercom Point of Sale Device, SmartICE with RIM R902M-2-0 Transmitter, Mobitex:Back, battery



Hypercom Point of Sale Device, SmartICE with RIM R902M-2-0 Transmitter, Mobitex:, Back open



Hypercom Point of Sale Device, SmartICE with RIM R902M-2-0 Transmitter, Mobitex:Back open, detail, transmitter



Hypercom Point of Sale Device, SmartICE with RIM R902M-2-0 Transmitter, Mobitex:Back open, board connected to transmitter



Hypercom Point of Sale Device, SmartICE with RIM R902M-2-0 Transmitter, Mobitex:Back open, board connected to transmitter detail