



IEEE 1394 and USB Combo Card User's Manual

Introduction:

This is a true innovative product. It comprises two USB ports and three 1394 ports. The concept of designing this product is some consumers whose PC does not equip with USB and 1394 port, and while he/she does not intend to buy a new PC for the time being, he/she likes to connect fast-growing USB and 1394 devices. To overcome the problems, he/she just need to buy this Combo card, then his/her PC can be upgraded immediately with capability of using various USB and 1394 devices, such as USB Hub, USB Mouse, USB PC Camera, 1394 Camcorder, 1394 Printer...etc.

Features:

- Compliant with PCI local bus 2.1 specs
- Hot Plug and play
- **USB**
 - Meets USB Specs Rev. 1.1 and HID Class definition Rev. 1.0
 - Support both low speed (1.5 Mbps) and full speeds (12 Mbps) devices
 - Supports up to 127 USB devices
 - Over current protection for each USB port
- **1394**
 - Support IEEE 1394-1995 standard and 1394a supplement Ver. 2
 - Support 100, 200 and 400 Mbps transmission rate
 - Both asynchronous and isochronous data transfer are supported

System Requirement:

- Supports MS Windows 98SE and ME with recommended CPU speed at Pentium II 300 MHZ or faster and 64MB memory or higher
- Supports Windows 2000 under minimum requirement of CPU speed at Pentium III or AMD-K7
- High performance AGP board and Sound Card
- Sufficient space of hard disk for video capture

Hardware Installation:

Step 1: Turn off the power on your computer and disconnect the power cable

Step 2: Open the computer case

Step 3: Select an open PCI slot. Remove the cover plate for that slot

Step 4: Push the unit into the slot

Step 5: Attach its bracket to the back of the computer and fix it with screws

Step 6: Close the computer case.

Step 7: Connect the power cable and turn the power on .

Driver Installation for Windows 98SE:

The product has Plug & Play function. Windows 98 will automatically detect the card and open the Add New Hardware Wizard dialogue box. Follow the steps below to install the driver.

Step1



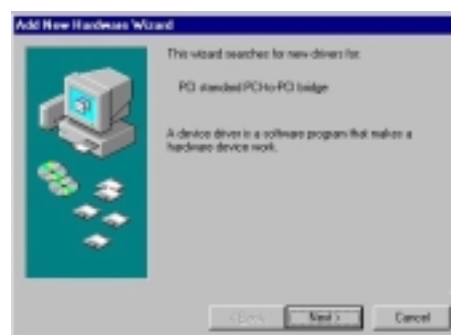
Step2



Step3

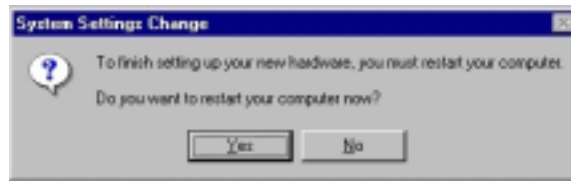
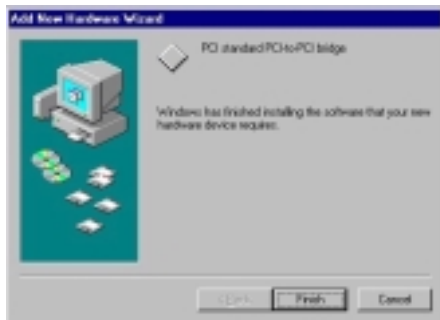


Step4

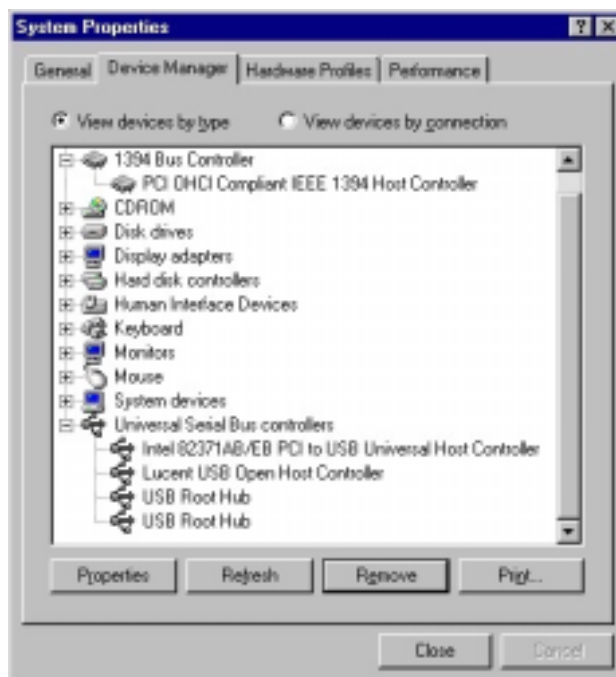


Step5

Installation completed



Finally, to ensure the Product is being installed properly, please go to the **Device Manager** of Properties in **My Computer** and double-click **1394 Bus Controller** and **Universal Serial Bus controllers** area, the **PCI OHCI Compliant IEEE 1394 Host Controller** and **Lucent USB Open Host Controller** are being shown respectively and no Yellow! Or red X mark in front of them. It verifies the Product is being installed correctly.



Specification:

Interface : Two USB Port and two 1394 port on the frame and one 1394 port on the PCB board

USB

Spec : Meets USB Rev. 1.1 and HID Class Definition Rev. 1.0
Transmission Speed : Up to 12 Mbps

1394

Spec : Meets IEEE 1394-1995 standard and 1394a Ver.2
Transmission speed : Support 100, 200 and 400 Mbps rate
Voltage output per port : DC +12V

Operating temperature : 0°C to 70°C
Operating humidity : 5% to 90% (non-condensing)
Dimension : 121.6x121.8x1.6 mm
Weight : 80 gram

Packing List

- USB and IEEE 1394 Combo Card
- This manual

This equipment has been tested and found to comply with the limits of a Class B digital device, pursuant to Part 15 of the FCC Rules. These limits are designed to provide reasonable protection against harmful interference in a residential installation. This equipment generates, uses and can radiate radio frequency energy and, if not installed and used in accordance with the instructions, may cause harmful interference to radio communications. However, there is no guarantee that interference will not occur in a particular installation; if this equipment does cause harmful interference to radio or television reception, which can be determined by turning the equipment off and on, the user is encouraged to try to correct the interference by one or more of the following measures:

1. Reorient/Relocate the receiving antenna.
2. Increase the separation between the equipment and receiver.
3. Connect the equipment into an outlet on a circuit different from that to which the receiver is connected.
4. Consult the dealer or an experienced radio/TV technician for help.

CAUTION: Changes or modifications not expressly approved by the manufacturer responsible for compliance could void the user's authority to operate the equipment