

## Introducing the Second Generation Through-Wall Motion Detection Radar For Enhanced Tactical Entry



*RadarVision2, the second generation hand-held radar device enables users to detect the movement of people behind walls*

- Hand-held
- Lightweight
- Rugged
- Easy to operate
- Detects motion
- Intuitive 2-D graphical color display
- Display compatible with night-vision equipment
- Two Lithium ion rechargeable batteries
- Ultra wideband technology
- Ultra-low transmit power

### New Features of RadarVision2<sup>™</sup>:

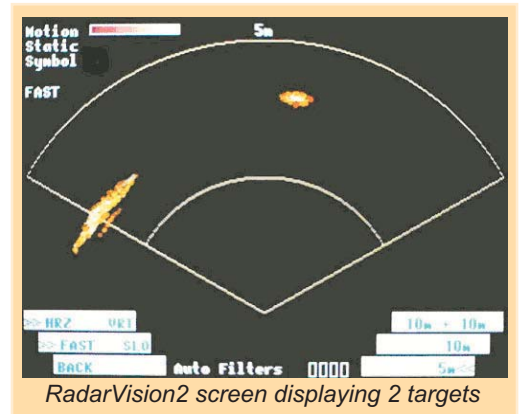
- Significantly increased sensitivity
- Additional vertical view mode
- Tripod mountable
- Three operator-selectable ranges
- Extended operating time on one battery
- New ergonomic design

The second generation RadarVision2<sup>™</sup> through-wall motion detection device utilizes field-proven UWB technology to deliver the most advanced features and benefits available on the market today. Based on the worldwide success of RadarVision<sup>®</sup> and marketplace feedback, Time Domain, the leader in UWB radar technology, has taken through-wall radar to a new level. Increased sensitivity, vertical view mode, and up to 3 hours of continuous use are just a few of the incredible new features available in this device.

Law enforcement officers placed in highly threatening situations make split second decisions every day. They need highly accurate information at the touch of a button to aid them in their decision-making and Time Domain delivers. Information that can help to identify potential threats and reduce risks is the most valuable of all, particularly if the information reveals unseen dangers like armed suspects hiding in closets, homes, and/or buildings.



RadarVision2™ is designed to detect people through walls. The radar uses ultra-wideband pulses - 10 million per second - to penetrate most common building materials including brick, reinforced concrete, concrete block, sheetrock, wood and wood composites, plaster, tile, and fiberglass. The color 2-D display of detected motion gives the operator a real-time, 98% accurate depiction of direction and distance to the motion contact.



## A wide array of features include:

- Significantly Increased Sensitivity - detect even the most subtle motion, including the breathing of stationary people under some conditions
- Tripod Mountable - with the optional tripod mount adapter
- 3m Short Distance Range - providing intensive target detection to find people hiding in closets or crawl spaces
- Vertical Mode - determine what floor the motion is coming from or the difference between a dog and person moving
- Extended Operating Time - up to three hours of continuous use from one lithium-ion rechargeable battery
- New Ergonomic Design - easy to hold two-handle configuration with ergonomically placed buttons for fingertip control

## Product Specifications:

Technical Characteristics		Power Requirements	
<b>EmissionType:</b>	Coded ultra wideband pulses	<b>Power Source:</b>	Lithium Ion removable rechargeable battery
<b>Pulse Rate:</b>	10 Million pulses per second	<b>Operating Time per Battery:</b>	>3 Hours
<b>Transmit Power:</b>	50 microwatts	<b>Battery Recharge Time:</b>	<4 Hours
<b>Bandwidth:</b>	1-3.5 GHz	<b>Low Battery Indicator:</b>	Onscreen
<b>RF Filters:</b>	4 adjustable band stop filters		
Performance		Dimensions	
<b>Range Accuracy:</b>	±1 meter (+/- 0.5m typical)	<b>Size:</b>	56 cm x 35.5 cm x 20.3 cm
<b>Horizontal Field of View :</b>	> ±60°	<b>Weight:</b>	4.5 kg
<b>Vertical Field of View:</b>	> ±45°	<b>Housing:</b>	High impact plastic
<b>Unobstructed Line of Sight:</b>	20 meter through Wood, Brick, Gypsum Wall & 20 cm Solid Concrete	<b>Color:</b>	Black
<b>Horizontal Modes:</b>	0 to 3m, 0 to 5m, 0 to 10m		
Environmental		Miscellaneous	
<b>Shock:</b>	Drop tested at 2 meters	<b>Display screen:</b>	Sharp advanced TFT 1/4 VGA
<b>Humidity:</b>	0% to >90% (Non-condensing)	<b>Packaging:</b>	Pelican 1650 hard sided carrying case
<b>Liquid:</b>	Water resistant (not submersible)	<b>Accessories:</b>	Battery Charger
<b>Operating Temperature:</b>	-10° C to +50° C		Lithium ion batteries
<b>Storage Temperature:</b>	-20° C to +60° C		Tripod mount adapter

This product falls under the jurisdiction of the United States Department of State for all exports. Prior export approval must be obtained from the Office of Defense Trade Controls under 22 CFR Ch. 1. Please contact your local distributor to arrange for export license application. This device has not yet been authorized as required by the rules of the FCC. It is not, and may not be offered for sale or lease, in the USA until authorization is obtained, except for sale or lease to the federal government or military. Time Domain is in the process of preparing the device for authorization.