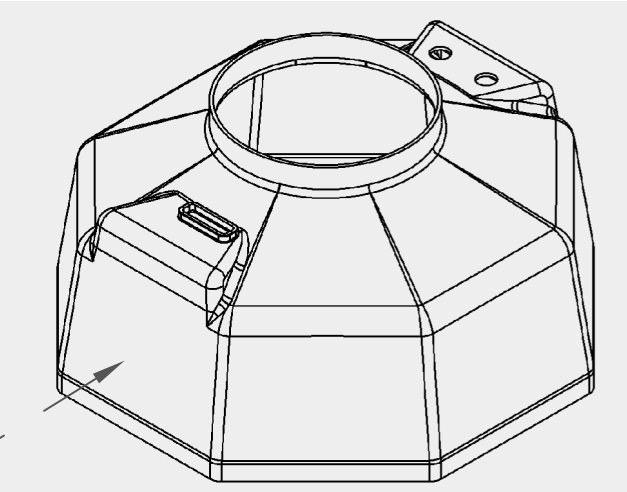


REVISIONS			
REV	DESCRIPTION	DATE	APPROVED
A	INITIAL RELEASE	2014/12/2	MAW

- NOTES:
1. PRINT LABEL ON WHITE POLYESTER OR VINYL WITH BLACK TEXT. LABEL TO BE WEATHER RESISTANT WITH PERMANENT ADHESIVE ON LABEL BACK.
 2. FONT:
 - 2.1. TYPE: ARIAL
 - 2.2. MIN HEIGHT: 0.085"
 3. LABEL TO BE PERMANENTLY AFFIXED TO THE EXTERIOR OF THE BASE PLATE COVER.




LABEL LOCATION
NOT TO SCALE



RoHS COMPLIANCE NOTE:

ALL MATERIALS, INKS, ADHESIVES, OVERLAMINATES AND PROCESSES USED TO PRODUCE THIS LABEL SHALL COMPLY WITH THE EU DIRECTIVE 2002/95/EC ON THE RESTRICTION OF THE USE OF CERTAIN HAZARDOUS SUBSTANCES IN ELECTRICAL AND ELECTRONIC EQUIPMENT (RoHS). SUPPLIER SHALL ALSO RETAIN DOCUMENTATION SUPPORTING RoHS COMPLIANCE ACCORDING TO THEIR STANDARD OPERATING PROCEDURES. ANY DEVIATIONS FROM THIS REQUIREMENT MUST BE OBTAINED IN WRITING FROM TIME DOMAIN, CORP.

RELEASE ORIGINATOR	Michael Williams	2014/12/2	THIS DESIGN AND PRINT IS THE PROPERTY OF TIME DOMAIN	
REVISION ORIGINATOR	INITIAL RELEASE		THIS DOCUMENT CONTAINS PROPRIETARY INFORMATION AND IS LOANED IN CONFIDENCE. THIS DOCUMENT IS SUBJECT TO RETURN UPON DEMAND ON THE EXPRESS CONDITION THAT IT WILL NOT BE USED IN ANY WAY NOT AUTHORIZED BY TIME DOMAIN.	
REFER TO PART RELEASE DOCUMENT COVER SHEET FOR APPROVAL SIGNATURES.			 TIME DOMAIN® 4955 Corporate Dr. Ste. 101 Huntsville, AL 35805 USA	
PRIMARY DIMENSIONS ARE IN INCHES UNLESS SPECIFIED. DIMENSIONAL TOLERANCES UNLESS OTHERWISE SPECIFIED: 2 PLACE ±.01 3 PLACE ±.005 4 PLACE ±.0005 ANGLES ±0.5			[SECONDARY] DIMENSIONS ARE IN MILLIMETERS UNLESS SPECIFIED. DIMENSIONAL TOLERANCES UNLESS OTHERWISE SPECIFIED: 1 PLACE ±0.3 2 PLACE ±0.12 3 PLACE ±0.012 ANGLES ±0.5	
DO NOT SCALE DRAWING			DWG NAME Label, PSP400 FCC ID Label	
3rd ANGLE PROJECTION			SIZE B1 COMPONENT PART NO. 320-0322 REV A	
SCALE 1=1			DWG NO. 32A-0322 SHEET 1 OF 1	