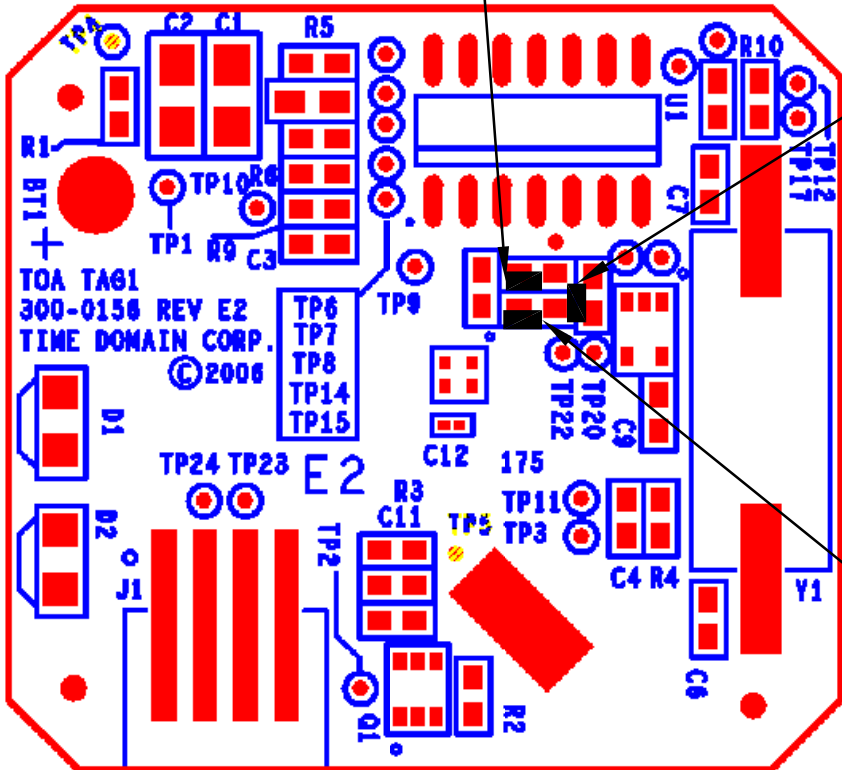


REVISIONS			
REV	DESCRIPTION	DATE	APPROVED


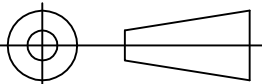
LOCATION R12 IS TO BE LOADED WITH A 12pF CAPACITOR (TDC P/N 015-0357-9).



LOCATION C8 IS TO BE LOADED WITH A 32.4ohm RESISTOR (P/N 013-0672-9).

R11 (P/N 013-0393-9) IS TO BE A NO LOAD. REMOVE PART IF LOADED.

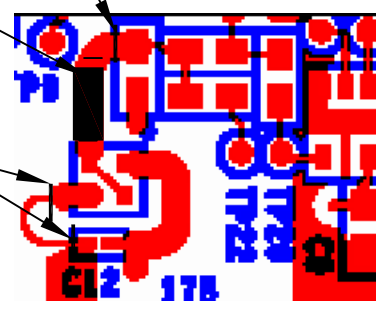
COMPONENT LOAD CHANGES

APPROVALS		DATE	THIS DESIGN AND PRINT IS THE PROPERTY OF TIME DOMAIN CORPORATION		
ORIGINATOR	JOE ANDERSON	3/8/07	THIS DOCUMENT CONTAINS PROPRIETARY INFORMATION AND IS LOANED IN CONFIDENCE. THIS DOCUMENT IS SUBJECT TO RETURN UPON DEMAND ON THE EXPRESS CONDITION THAT IT WILL NOT BE USED IN ANY WAY NOT AUTHORIZED BY TIME DOMAIN CORPORATION.		
ENGINEER			<div><div>TIME DOMAIN® THE PULSE OF THE FUTURE™ HUNTSVILLE, AL</div></div>		
APPROVED					
RELEASED					
ALL DIMENSIONS ARE IN INCHES UNLESS SPECIFIED. DIMENSIONAL TOLERANCES UNLESS OTHERWISE SPECIFIED:  2 PLACE ±.01    3 PLACE ±.005 4 PLACE ±.0005    ANGLES ±0.5°		 3rd ANGLE PROJECTION	DWG NAME TDN-00146 - 200-0195E2 AND 200-0194E1		
DO NOT SCALE DRAWING			SIZE B1	COMPONENT PART NO. TDN-00146	REV A
			SCALE ~	DWG NO. TDN-00146	SHEET 2 OF 4

CUT TRACE CLOSE TO C12

REMOVE A SECTION OF THE TRACE  
90 TO 100 MILS LONG. FOR  
REFERENCE YOU CAN USE THE  
FOLLOWING POINTS TO ALIGN YOUR  
CUTS. THE INSIDE DIAMETER OF  
THE SILKSCREENED CIRCLE AROUND  
"P9" TO THE OUTSIDE EDGE OF THE  
SILKSCREENED BOX AROUND "Q2".

CUT TRACE CLOSE TO PAD.  
TRACE MUST BE CUT AT THE TWO  
PLACES NOTED. FULL REMOVAL OF  
THE TRACE IS ACCEPTABLE.

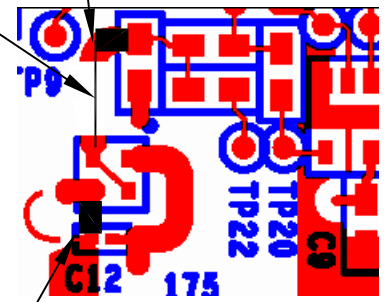


## TRACE REMOVAL AND MODIFICATIONS.


ADD A 1.5uH INDUCTOR (P/N  
016-0226-9). THE PART IS  
TO BE SOLDERED TO ONE SIDE  
OF R13 AND THE STUB OF THE  
TRACE COMING FROM Q2.

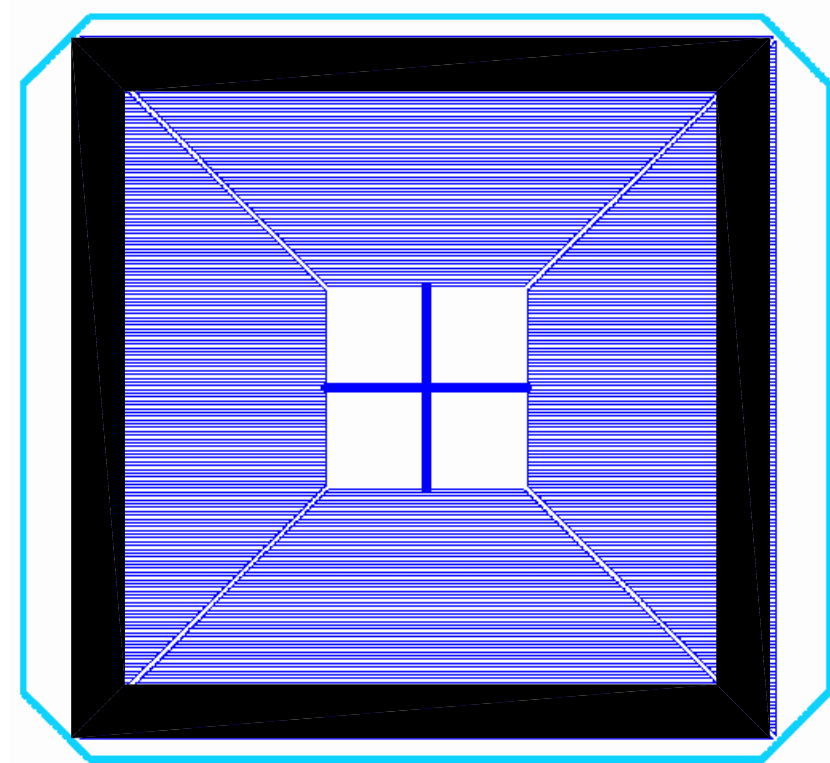
CUT A PIECE OF 30AWG  
NON-INSULATED WIRE TO A  
LENGTH OF 0.110 TO 0.120  
LONG. SOLDER THE WIRE  
BETWEEN THE TWO SECTIONS  
OF REMAINING TRACE.

ADD A 5.6uH INDUCTOR (P/N  
016-0124-9). THE PART IS  
TO BE SOLDERED TO PIN 3 OF  
Q2 AND TO ONE SIDE OF C12.




## HAND LOAD COMPONENTS.

 <b>TIME DOMAIN.</b> THE PULSE OF THE FUTURE™ HUNTSVILLE, AL	THIS DESIGN AND PRINT IS THE PROPERTY OF <b>TIME DOMAIN CORPORATION</b>		
	THIS DOCUMENT CONTAINS PROPRIETARY INFORMATION AND IS LOANED IN CONFIDENCE. THIS DOCUMENT IS SUBJECT TO RETURN UPON DEMAND ON THE EXPRESS CONDITION THAT IT WILL NOT BE USED IN ANY WAY NOT AUTHORIZED BY TIME DOMAIN CORPORATION.		
FILE NAME:	DWG NAME <b>TDN-00146 - 200-0195E2 AND 200-0194E1</b>		
DO NOT SCALE DRAWING	SIZE <b>B2</b>	COMPONENT PART NO. <b>TDN-00146</b>	REV <b>A</b>
	SCALE ~	DWG NO. <b>TDN-00146</b>	SHEET <b>3</b> OF <b>4</b>



REMOVE .080" OF COOPER FROM ALL FOUR SIDES OF THE ANTENNA PLANE. 0.004" MAXIMUM ALLOWABLE CUT DEPTH INTO THE SUBSTRATE.

 <b>TIME DOMAIN.</b> THE PULSE OF THE FUTURE™ HUNTSVILLE, AL	THIS DESIGN AND PRINT IS THE PROPERTY OF <b>TIME DOMAIN CORPORATION</b>		
	THIS DOCUMENT CONTAINS PROPRIETARY INFORMATION AND IS LOANED IN CONFIDENCE. THIS DOCUMENT IS SUBJECT TO RETURN UPON DEMAND ON THE EXPRESS CONDITION THAT IT WILL NOT BE USED IN ANY WAY NOT AUTHORIZED BY TIME DOMAIN CORPORATION.		
	DWG NAME <b>TDN-00146 - 200-0195E2 AND 200-0194E1</b>		
FILE NAME:	SIZE <b>B2</b>	COMPONENT PART NO. <b>TDN-00146</b>	REV <b>A</b>
DO NOT SCALE DRAWING		SCALE ~	DWG NO. <b>TDN-00146</b>
		SHEET <b>4</b> OF <b>4</b>	