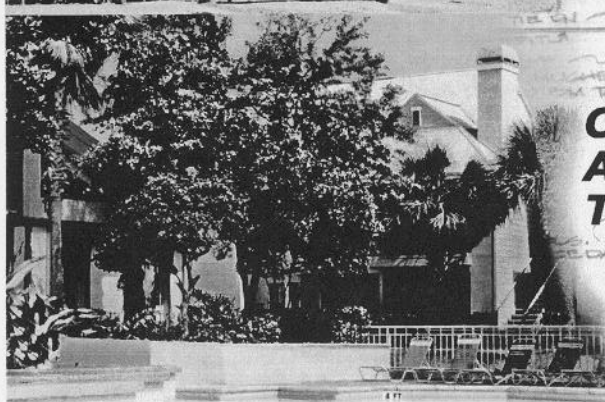


# **Interrogator 900**

**Wireless Submetering Systems**



**Design  
Manufacture  
Installation  
Maintenance**



**Commercial  
Apartments  
Townhomes**



## ***Interrogator 900MHz Installation Guide***

### ***Transmitter to Meter Head Install:***

*The transmitter casing comes with a section indented for mounting to the meter. Place transmitter to the side opposite of the meter wiring lugs and tighten down with pull strap to meter.*

### ***Transmitter to Wall Mount Install:***

*Locate a position wall free from all obstacles and in a location easily accessible. Open transmitter case by pressing down on the keyed tab release at the top of the transmitter case. Breakouts are indented in the angled portion to the transmitter case, press out with end of screwdriver. Mark location through the breakouts on the portion of the wall mount. Install mollis, and then hand screw transmitter to wall.*

### ***Wiring Transmitter to Meter Interface:***

*Your transmitter comes from the factory with a wiring harness made for your meter specifications. Please see the detailed meter specification breakdown for your proper cable number.*

*Open transmitter case and connect the Amp Connector to its mate located at the right lower side of the circuit board. Connect the other end of the cable to their corresponding color mates on the meter head.*

## IMPORTANT NOTICE AND SAFETY INFORMATION

This device contains a low power transmitter. When the device is in use it sends out radio frequency (RF) signals. In August 1996, the Federal Communications Commission (FCC) adopted RF exposure guidelines with safety levels for wireless devices.

Use only the supplied antenna. Unauthorized antennas, modifications, or attachments could damage the transmitter and may violate FCC regulations.

NOTE: THE MANUFACTURER IS NOT RESPONSIBLE FOR ANY RADIO OR TV INTERFERENCE CAUSED BY UNAUTHORIZED MODIFICATIONS TO THIS EQUIPMENT. SUCH MODIFICATIONS COULD VOID THE USER'S AUTHORITY TO OPERATE THE EQUIPMENT.