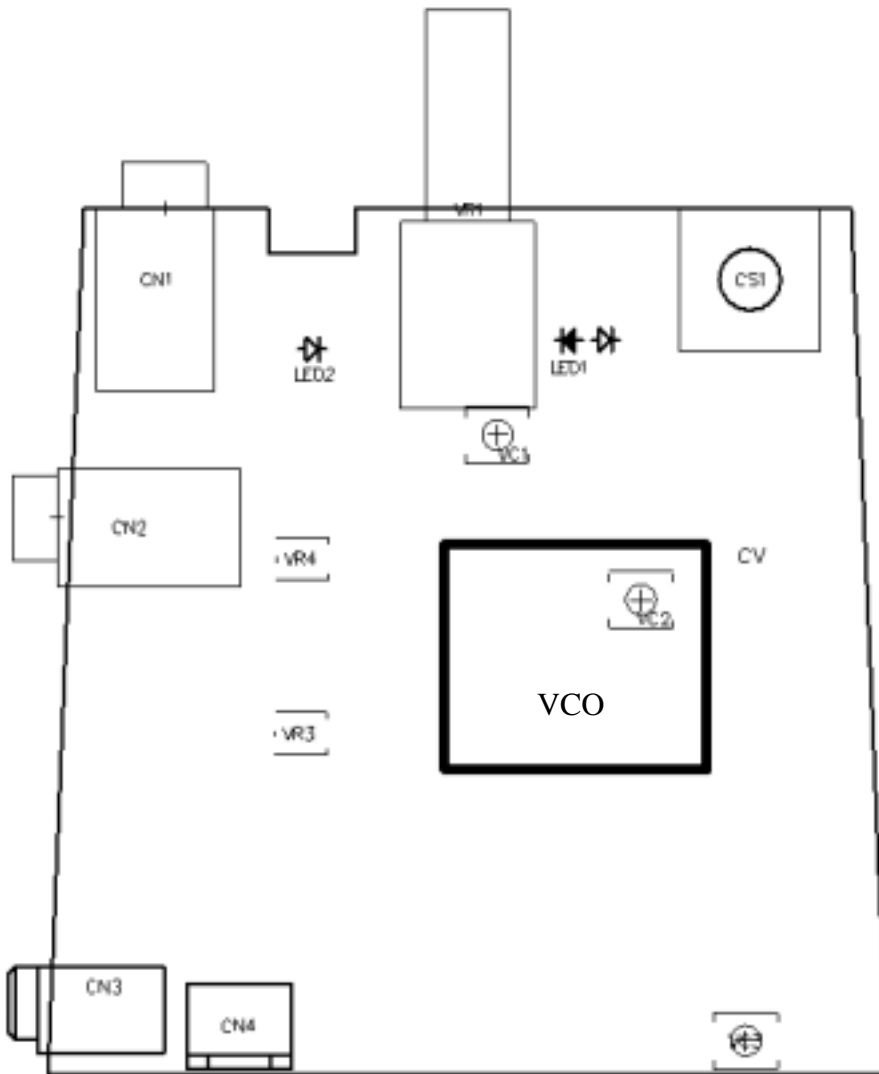


## WT-808T Tune-up Procedure



1. The modulation level can adjust by VR4.
2. The pilot tone level can adjust by VR3.
3. The audio frequency is modulated which can get RF signal via modulator VCO.
4. Adjust VC2 and VC1 to correct the reference frequency.
5. The antenna efficiency can adjust by VC3.
6. The Osc. Signal coupled to drive amplifier Q9 and power amplifier Q8 to get better RF level.