

---

**DRAFT**

Tadiran Telematics Proprietary - Commercial Confidential

# RSC-900

## Road Side Communicator User Manual

**NOTE:**

This equipment has been tested and found to comply with the limits for a Class A digital device, pursuant to part 15 of the FCC Rules. These limits are designed to provide reasonable protection against harmful interference when the equipment is operated in a commercial environment. This equipment generates, uses, and can radiate radio frequency energy and, if not installed and used in accordance with the instruction manual, may cause harmful interference to radio communications. Operation of this equipment in a residential area is likely to cause harmful interference in which case the user will be required to correct the interference at his own expense.

**DRAFT**

---

**DRAFT**

---

**Table of Contents**

<b>1. MECHANICAL INSTALLATION .....</b>	<b>3</b>
1.1    INSTALLATION OF RSC ON THE PIPE .....	4
1.2    RSC CABLE CONNECTION .....	5
<b>2. OPERATION INSTRUCTIONS.....</b>	<b>7</b>
2.1    POWER AND COMMUNICATION CONNECTIONS .....	7
2.2    FIRST OPERATION TEST.....	7
2.2.1    PC SETUP.....	7
2.2.1    RSC-900 SETUP PARAMETERS .....	7

**DRAFT**

---

**DRAFT**

## **1. Mechanical Installation**

The RSC-900W should be installed by professional installers **ONLY**, authorized **ONLY** by the local distributor – the “*Operating Company*”

The RSC has to be installed on a horizontal pipe above the center of a road lane.



The pipe has to be 1.5” up to 2” in diameter, and its length has to be sufficient to locate the RSC over the center of the lane. (The width of a standard lane is about 3.6m  $\approx$  12ft). For longer pipes and for areas with extreme winds it is important to add additional supports (still cables, etc.) to prevent bending of the pipe.

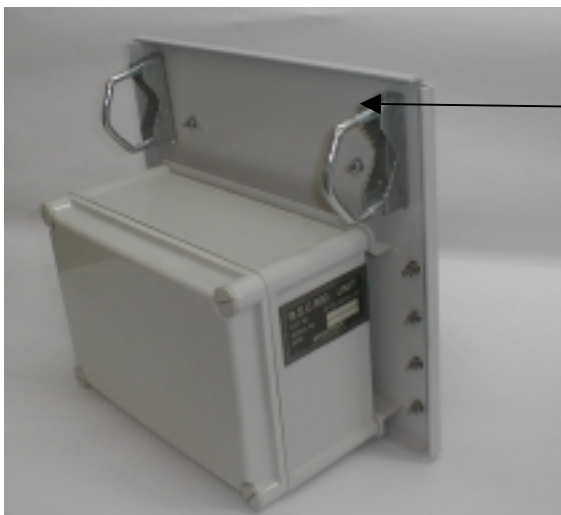
---

**DRAFT**

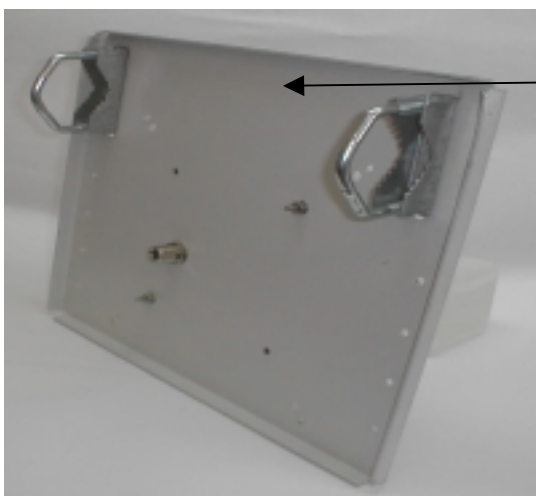
## DRAFT

### 1.1 Installation of RSC

Each unit, the main unit and the auxiliary antenna have two U stretchers that are connecting the main plate to the horizontal pipe.



**U stretchers  
Main Unit**



**U stretchers  
Aux. (Rx) antenna**

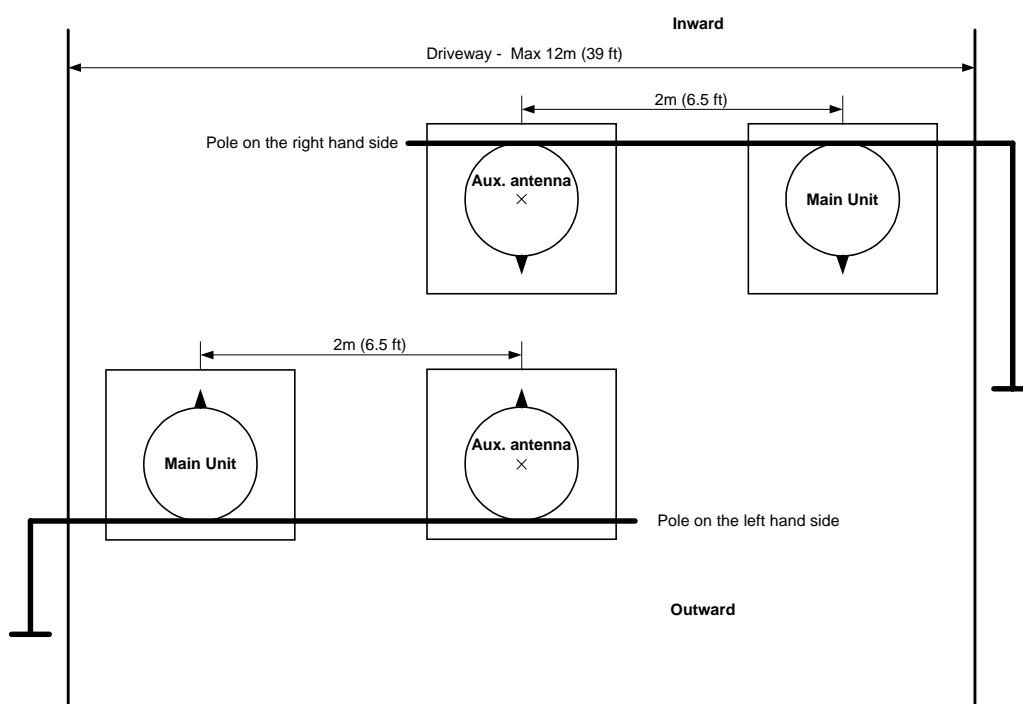
**DRAFT**

## DRAFT

### Installation Procedure

- The aux. (Rx) antenna will be always installed above the center of the driveway. The Main Unit can be installed on any side of the Aux. (Rx) antenna. If a pole installation is used the Main Unit will always be closer to the pole!
- Distance** - The distance between the two units will be 2 meters (6.5 ft).
- Direction** – The antennas will be parallel to ground.

The Aux. (Rx) antenna will be located at the center of the driveway.



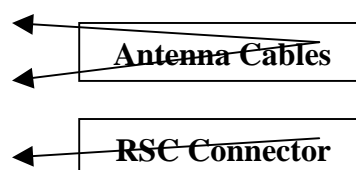
The main unit should be placed either to the left or to the right of the aux. (Rx) antenna but the direction shall be observed so that both antennas shall be in the same direction: if to the right, the direction shall be outward and if to the left, the direction shall be inward – see above drawing.

## DRAFT

## DRAFT

### 1.2 RSC cable connection

1. Connect the RSC Cable to RSC connector



The RSC-900 is delivered with a connected antenna (Tx) which is an integral part of the RSC-900, and the aux. (Rx) antenna with its cable to be connected at the “AUX ANTENNA” connector at the main unit.

#### **WARNING:**

**The use of any antenna other than the one being an integral part of RSC-900 is explicitly forbidden in accordance with FCC rules CFR47 part 15.204.**

**Failure to do so may void the product warranty and may expose the end user or the service provider to legal and financial liabilities.**

## DRAFT

---

**DRAFT****2. Operation Instructions****2.1 Power and communication connections**

- Connect the main power (24 V) to the RSC cable to pins No 23/24 (+) and pins No.21/22 (-)
- Connect the Communication line to the RSC cable to pins No: 11 (TXD), 10 (RXD), and 21/22 (GND)

**2.2 First Operation Test****2.2.1 PC Setup**

- (1) Prepare a PC with PC Anywhere® software installed on it.
- (2) Connect the PC serial port (Com1) by means of PC Anywhere cable to the communication line pins at the RSC cable.

**2.2.2 RSC-900 Setup Parameters**

- (1) Double click on RSC icon to run pcAnywhere
- (2) Click on *Remote Control* icon.
- (3) The RSC application menu will appear in a blue DOS window
- (4) Hit *esc* key several times until the Main Menu appears:

TADIRAN - Telematics	Ver 5.0.0
Road Side Communicator 00000314 for e-Commander System	
<b>MAIN MENU</b>	
Manual operation	
Script	
Bit test	
Rsc setup	
Vtrack setup	
Internet modem setup	
Quit	

---

**DRAFT**

**DRAFT**

- (5) In the Main Menu, press **R** on the keyboard to RSC setup
- (6) Get the following sub-menu

TADIRAN - Telematics		Ver 5.0.0			
Road Side Communicator 00000314 for e-Commander System					
<b>RSC SETUP</b>					
Dial Number:	9, 5575739 {enter dial phone number, 9, if needed}				
Maintenance Hour:	10 {enter maintenance hour: 0 to 23 (on the hour)}				
Connection Type:	MODEM				
	<table border="1"><tr><td>MODEM</td></tr><tr><td>RS232</td></tr><tr><td>INTERNET MODEM</td></tr></table>		MODEM	RS232	INTERNET MODEM
MODEM					
RS232					
INTERNET MODEM					
Send File Interval (min):	30 {enter dialing time interval: 1 to 1440}				

- (7) With the keyboard arrow keys, bring the cursor to the required field and modify it by keying in the new value(s):  
Dial-up phone number - DMRC phone number  
Maintenance hour  
Connection type  
Send file interval
- (8) After modification, hit *esc* key and the following message appears:  
*Update RSC parameters ? (Y/N)*
- (9) Type **Y** (yes) on the keyboard to save the new parameters
- (10) The message: *RSC parameters have been updated* is displayed for a short period of time and the Main Menu reappears.
- (11) Type **S** for Script
- (12) Observe the application is running
- (13) Shut down the PC.
- (14) Disconnect pcAnywhere cable.
- (15) Call operating center of the “*Operating Company*” and give the RSC-900 serial number and the local phone number for the RSC registration process in the DMRC.
- (16) Check that the RSC is working properly (read VTUs and file transfer to the DMRC)

**DRAFT**



---

**DRAFT****DRAFT**

---

**DRAFT**

Here additional instructions will be added, according to the  
“*Operating Company*” requests

We will be happy to assist you at operating support center

Phone:

Fax:

“*Operating Company*” Name Logo and address

**DRAFT**