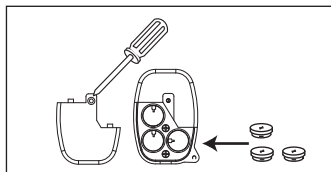


1. Batteries install and replacement
(Battery Type-LR44X3 or Similar)
 - a. Remove the battery compartment cover by screw driver and sliding open the battery Cover.
 - b. Replace with new batteries of the same type.
Make sure the polarity (+ or -) of the batteries match the polarity marks inside the unit. As shown below.
 - c. Replace battery cover.



(Fig.1)

LEARNING CODE TO MAIN UNIT

The wireless remote control compatible T015, T016, T018 main unit, must learn code to main unit then use, learn code operation see main unit manual.

Notes for remote operation

- If radio linked remote control operation range become near, replace the batteries according to "BATTERIES REPLACEMENT".
- The battery life should be about six months under normal use, so replace battery at least every 1 year.
- Effective range, about 20 meters.

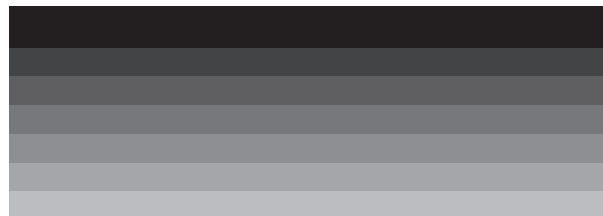
Warning:

Changes or modifications to this unit not expressly approved by the party responsible for compliance will void the user's authority to operate the equipment. Any change to the equipment will void FCC grant.

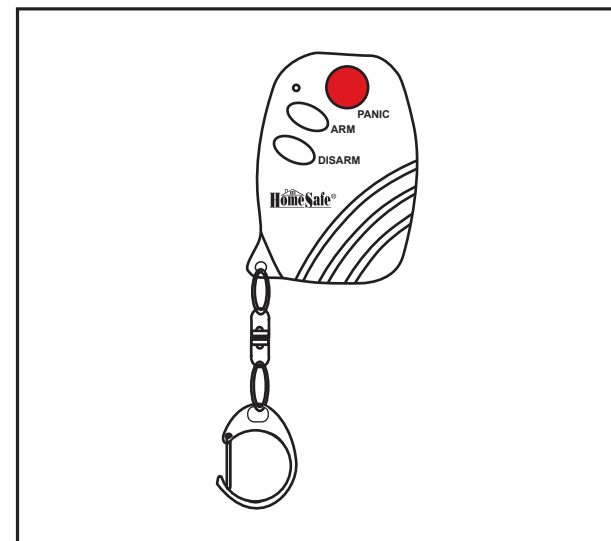
This equipment has been tested and found to comply with the limits for a Class C digital device, pursuant to part 15 of the FCC Rules. These limits are designed to provide reasonable protection against harmful interference in a residential installation. This equipment generates, uses and can radiate radio frequency energy and, if not installed and used in accordance with the instructions, may cause harmful interference to radio communications. However, there is no guarantee that interference will not occur in a particular installation. If this equipment does cause harmful interference to radio or television reception, which can be determined by turning the equipment off and on, the user is encouraged to try to correct the interference by one or more of the following measures:

- Reorient or relocate the receiving antenna.
- Increase the separation between the equipment and receiver.
- Connect the equipment into an outlet on a circuit different from that to which the receiver is connected.
- Consult the dealer or an experienced radio/TV technician for help.

This device complies with Part 15 of the FCC Rules. Operation is subject to the following two conditions: (1) this device may not cause harmful interference, and (2) this device must accept any interference received, including interference that may cause undesired operation



WIRELESS REMOTE CONTROL



OWNER'S MANUAL