

EUT:PC Camera

FCC ID:NRPPK352P

3Cam Technology, Inc.

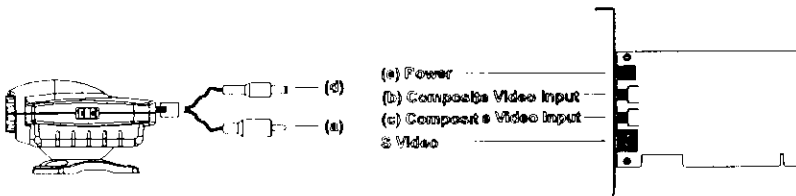
User's manual

Table of Contents

INTRODUCTION	1
FEATURES	1
SYSTEM REQUIREMENTS	1
INSTALLING YOUR CAMERA.....	3
HARDWARE INSTALLATION.....	3
DRIVER INSTALLATION	4
<i>Installing the Driver in Windows 95</i>	4
<i>Installing the Driver in Windows 95 OSR2</i>	5
VERIFYING THE COMPLETION OF INSTALLATION	8
<i>Re-installing the Capture Card</i>	8
SOFTWARE INSTALLATION	12
USING YOUR CAMERA	13
STARTING THE CAMERA APPLICATION	13
<i>VideoCapture</i>	14
<i>V-Mail</i>	17
<i>Netmeeting</i>	18
<i>VideoPlayer</i>	19
<i>PhotoMagic</i>	21
<i>PhotoEZ</i>	22
<i>PhotoCards</i>	23

- VGA display in 32K, 64K, or 16.7M color mode with hardware assisted video playback acceleration and DirectDraw 5.0 supported
- Sound card and speakers required for audio support

9. Close the PC housing.
10. Re-attach the power cable to your PC system.
11. Connect the power cable to the POWER connector and the video cable to the Video-IN connector on the capture card.



12. Power on your system.

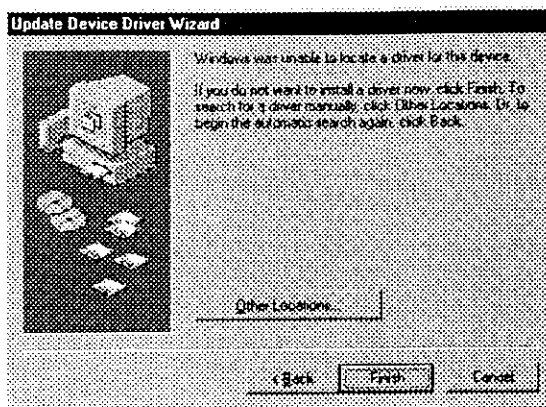
Driver Installation

For different version of Windows 95, setup procedures will be different. Check for your Windows version and install the driver correctly as described below. To get to know your Windows version, go to *My Computer – Control Panel – System*. In the General tab, you will see your System version. If it is 4.00.950, then install the driver from the section below. If it is 4.00.950B, then go to the section for Windows 95 OSR2.

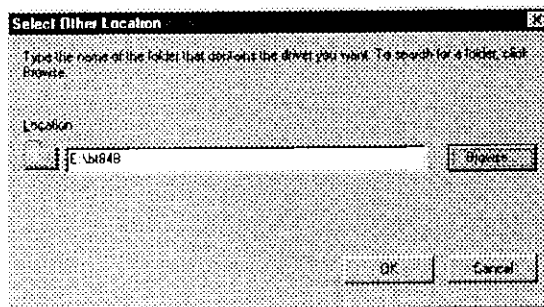
Installing the Driver in Windows 95

After starting up, Windows 95 will automatically find your capture card and ask for the its driver software. Insert your driver disk or CD and press **OK**. The driver software will now automatically be installed.

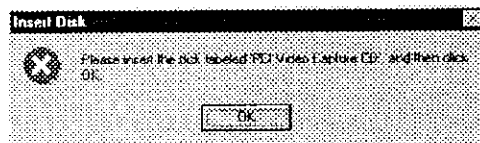
2. Click on the *Other Location* icon.



3. Insert your driver disk or CD and, click on the *Browse* icon to specify the path where the driver is and press *OK*.

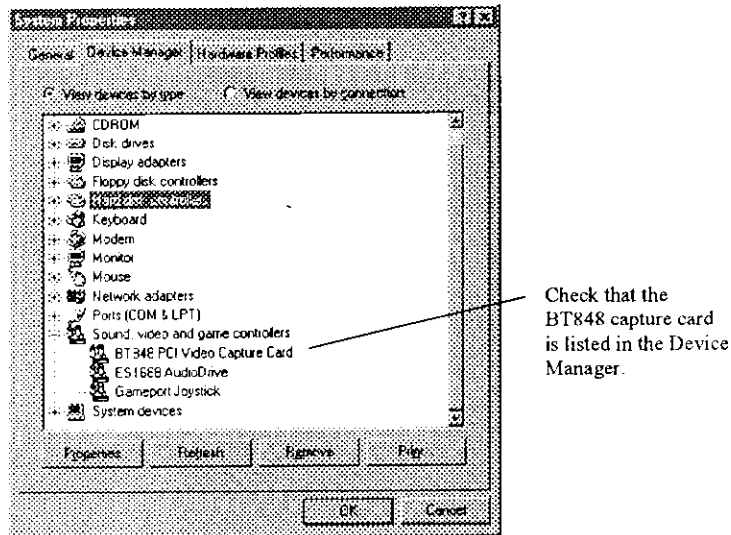


4. The Insert Disk dialog box will pop up and ask again for the CD. Click on *OK*.



Verifying the Completion of Installation

To ensure that the capture card is installed properly and the driver installation is completed, go to *My Computer – Control Panel – System*. Check in the Device Manager tab from the System Properties dialog box.

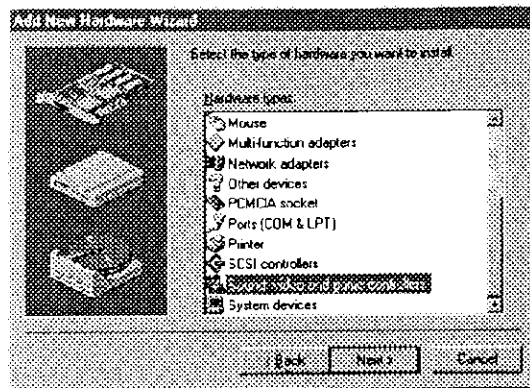


If you see the 'BT848 PCI Video Capture Card' is listed in the device manager, you have installed the card successfully. If you don't see this or if you see an exclamation mark in the 'BT848 PCI Video Capture Card' line, we suggest you reinstall the device. Follow the instructions in the next section to install again.

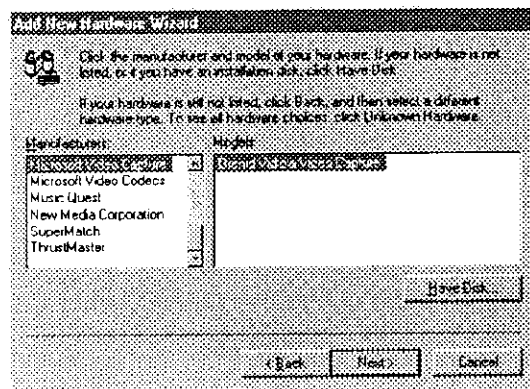
Re-installing the Capture Card

Before you re-install the capture card, select the 'BT848 PCI Video Capture Card' and click on the Remove button if you see an exclamation mark shown in the line.

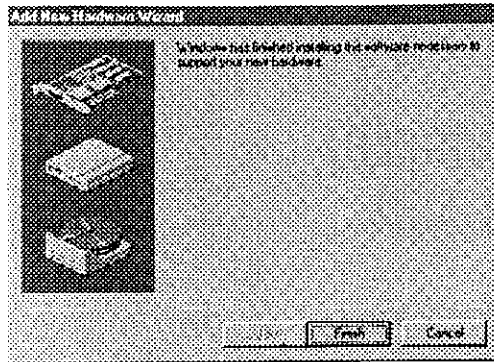
4. Select the 'Sound, video and game controllers' and click on *Next*.



5. Click on *Have Disk*.



9. Click on Finish. The program is now successfully installed. Reboot your system.



If your capture card still doesn't work properly, there might be a hardware conflict in IRQ. You should check the user's manual of your motherboard for details.

Software Installation

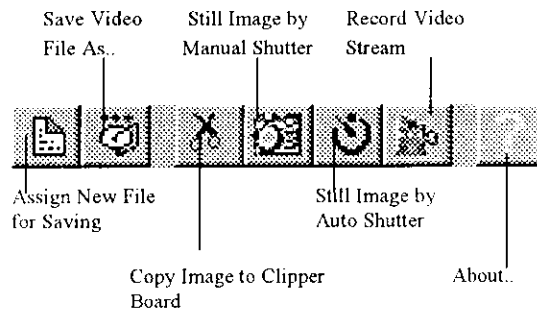
1. Start Windows.
2. Place the PC-EYE CD in your CD-ROM drive.
3. Run the `setup.exe` in CD disc to install the application software.
4. You may specify the destination directory and the name of the program group.
5. You can select the application components to be installed.

After installation is completed, make sure to keep the CD disc in a safe place for you might want to install some components of the software later. Furthermore, you will need the serial number and password printed on the CD to log on to our website for upgrading software in the future.

Visit our website at <http://www.mmedia.com.tw>.

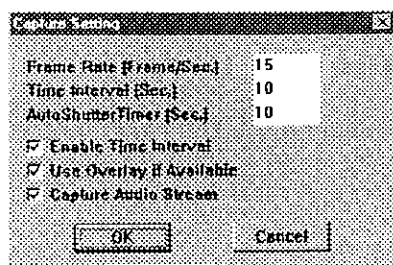
VideoCapture

This application is used for capturing video and images from your camera. Video captured can be saved as Windows AVI file, whereas images can be saved as BMP file format, which will then allow you to work with other applications. You may try out different settings of camera driver and start recording your own video.

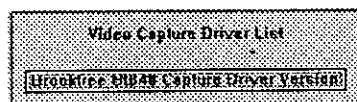


1. Select the *Setting* from the menu bar.
2. There are many entries for configuring and using this application.

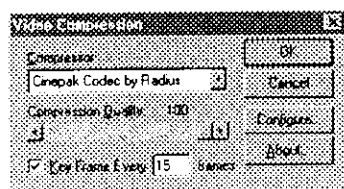
Option: Sets options for camera drivers.



Select Camera: Selects different camera drivers for connection.



Video Compressor: Selects the video compressor you would use and selects video compression algorithm.

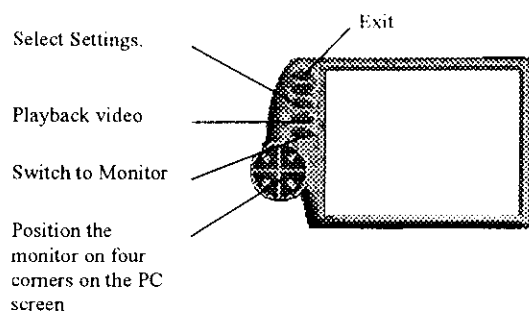


4. Press on the *Save* button to save the recorded video and audio into an executable file.
5. Press on the *Email* button to send the recorded video and audio by your email client.

Netmeeting

This video conference program allows you to see and talk to people over the network.

1. Connect to the Internet server.
2. Select the *Directory* icon on the left side.
3. Choose the Server from list on the upper-right corner.
4. Choose the Category from list on the up side.
5. Press the *Call* button on the upper-right corner and enter the email address of your party or choose the email address from the list.

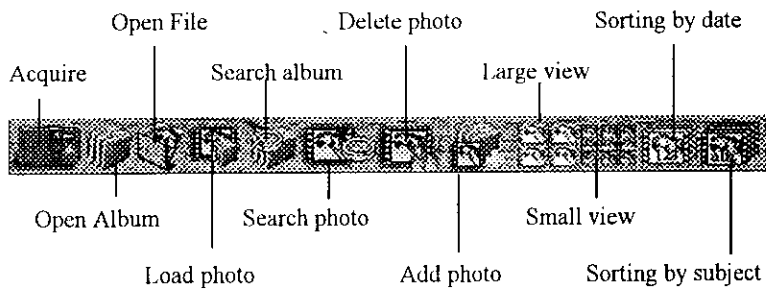


3. Switch to *Monitor* mode. Set up the timer for recording video. When the timer is on, program starts recording video and saves it into a file. You may playback the recorded video later.

PhotoEZ

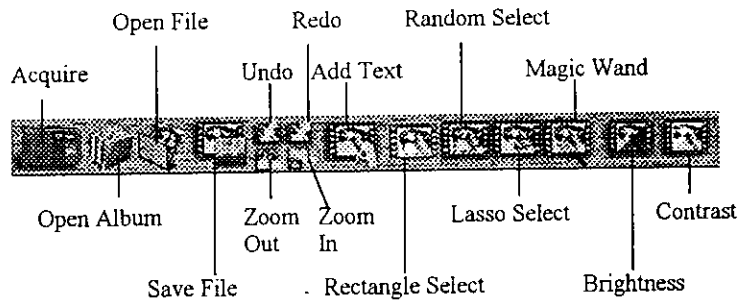
This program helps you grab photos by camera and put them into a photo album. It provides photo editing, photo enhancement functions to improve or change your photos to your satisfaction. Note that this application offers different icons when you are in Album mode and in Image mode.

1. Create a new album by clicking on the *New* option in the Album menu and give your new album a name. Snapshot photos into this new album by clicking on the *Video Capture* option. Save the album for later use.



2. Open an image file. You may adjust the level of brightness, contrast, saturation or hue for this image. Save the change.

3. Open an image file. Apply the special effects on this image. Save the result into an image file.



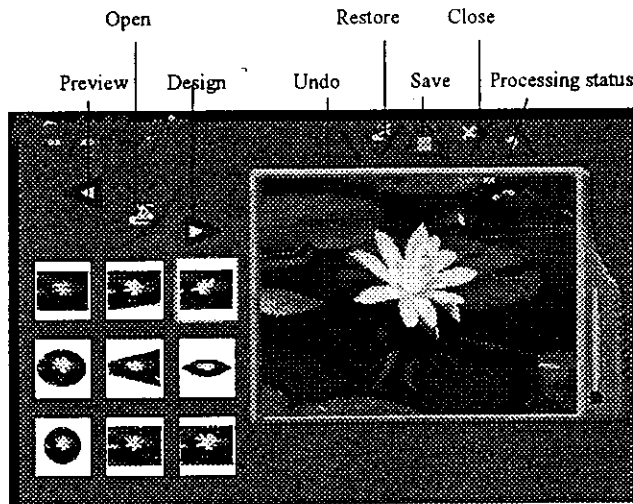
PhotoCards

With this application, it takes only seconds to make your own greeting card. Simply apply your own photos to our designs for different occasions in this application. You can just select the card for your purpose, put the photo and the text into this card and make yours a fancy electronic greeting card.

1. Select the category of cards.
2. Select the specific card for your usage.
3. Input a photo into the overlap area. Note that the photo you are going to apply has to be a true color photo.
4. Add text into the card.
5. Save the result into a file.

PhotoMagic

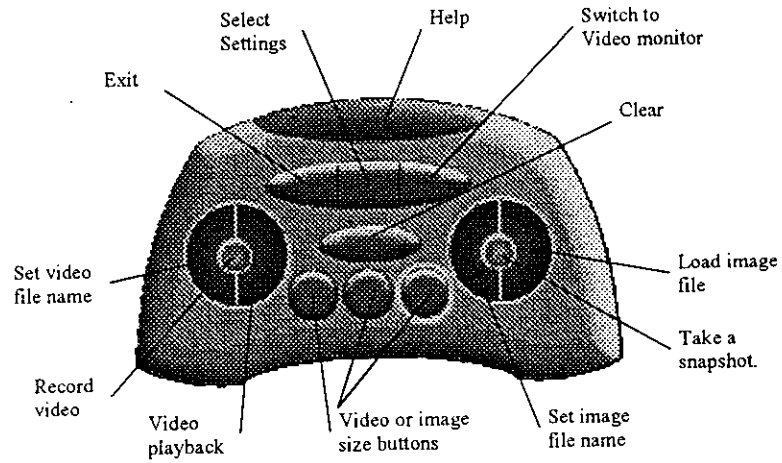
This is a handy tool for applying special effects on your photos. You may try each effect on the photo by clicking on the preview icon. It is easy and fast to apply a series of special effects, such as emboss, blur, negate, etc. In this manner, you can invent your own sequence to have special photo effect.



1. Open an image file and you will see an array of special effects shown to the left of the image.
2. Press on the *Preview* button to apply the effect.
3. Press on *Undo* button to go back one step of modification.
4. Press on *Restore* button to reset all the modification.
5. Press on *Save* button to save the result into a file.

VideoPlayer

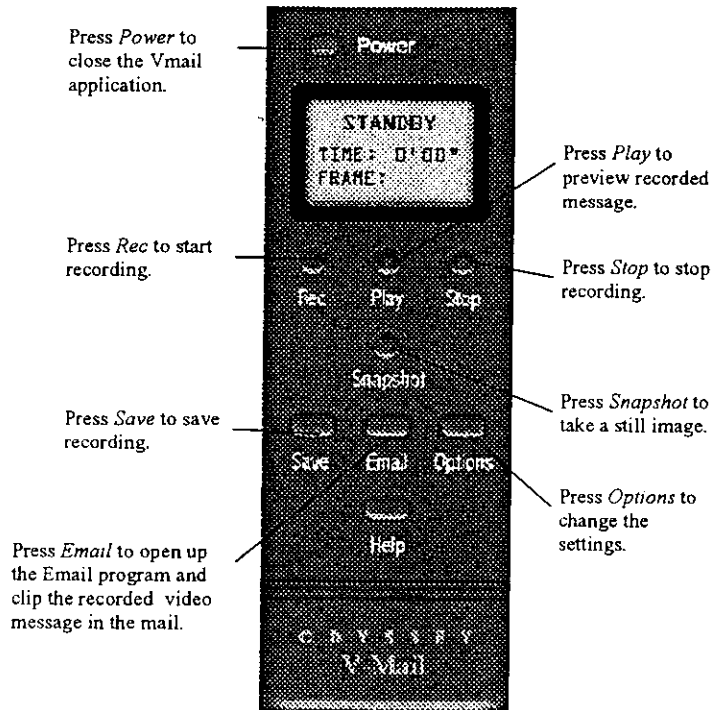
This VideoPlayer application controls the input of the camera. You may use it to record video and audio data or you can use it to monitor the view of camera.



1. Press on the *Size* button to select the view size.
2. Press on *Record* button to record video and press any key to stop recording or press on *Snapshot* button to take a photo and save it into a file.

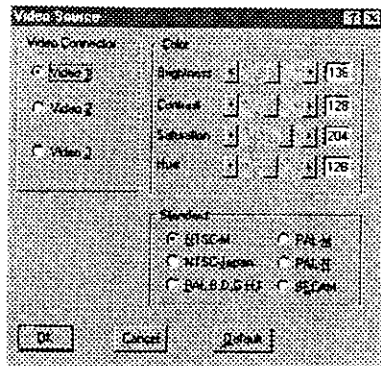
V-Mail

This application serves to record video and audio message and saves it into an executable file. You can then send the message out through the Internet as a video mail.

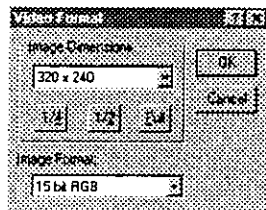


1. Press on the *Rec* button to start recording video and audio.
2. Press on the *Stop* button to stop recording.
3. Press on the *Play* button to preview the recorded video and audio.

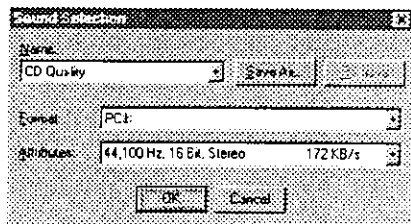
Video source: Selects input source, adjusts color value and selects video system.



Video format: Selects display size and color format.



Audio format: Sets the quality of sound you like to record. If sound is not a critical matter, keep the settings low or it will affect the quality of your video.

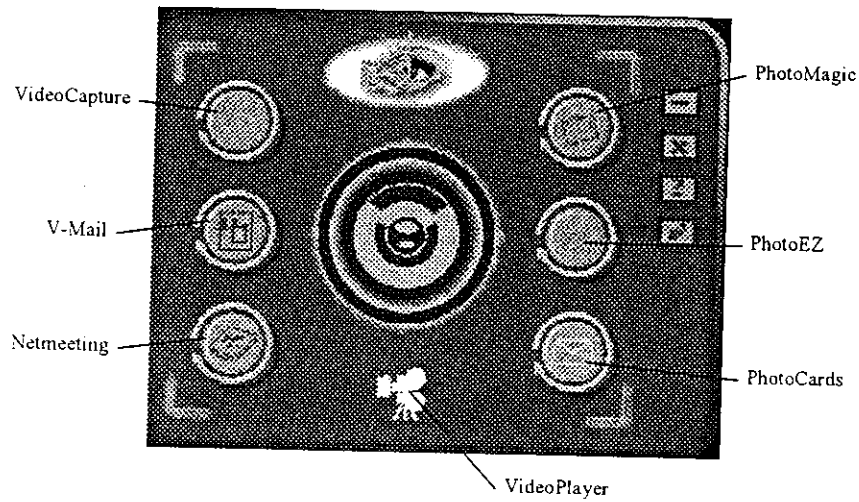


USING YOUR CAMERA

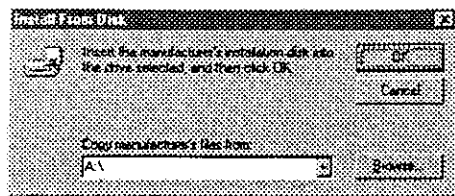
Starting the Camera Application

You may start any camera application program by the camera control panel. The control panel is a program manager with nice graphic icons to show you the entry into each application. You can find the control panel on the Windows desktop or the Start menu. By one single click on the icon on the panel, you will enter the specified application program.

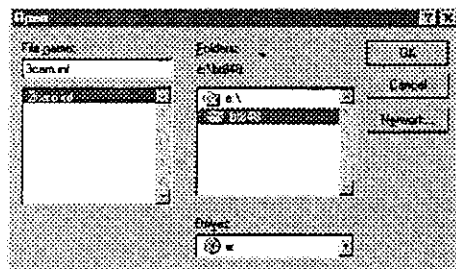
You have seven application programs to use with this camera: VideoCapture, V-mail, Netmeeting, VideoPlayer, PhotoMagic, PhotoEZ, and PhotoCards.



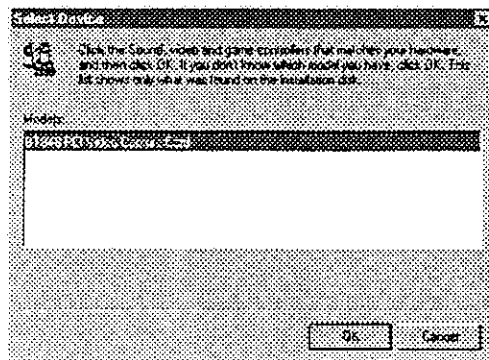
6. The Install From Disk dialog box pops up. Click on Browse icon to search for the path of the device driver.



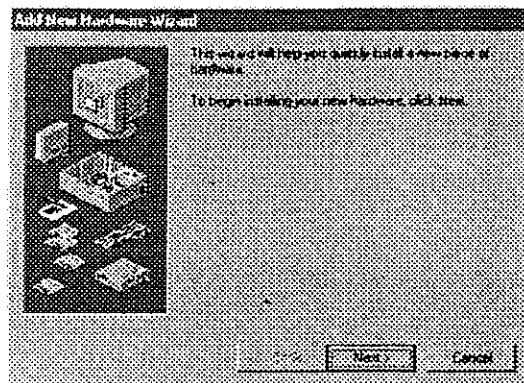
7. Either you install from the CD or diskette, specify the path of the file 3cam.inf and click *OK*.



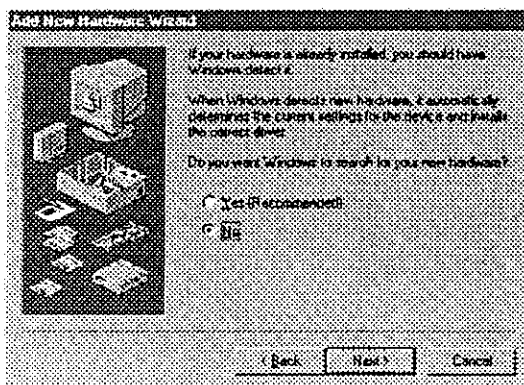
8. The Select Device dialog box will display you the name of the capture card: 'BT848 PCI Video Capture Card'. Click on *OK*.



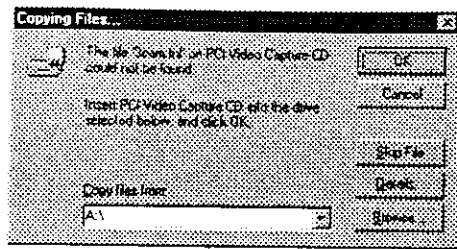
1. Restart your system.
2. From your desktop, go to *My Computer – Control Panel – Add New Hardware*. Click on *Next*.



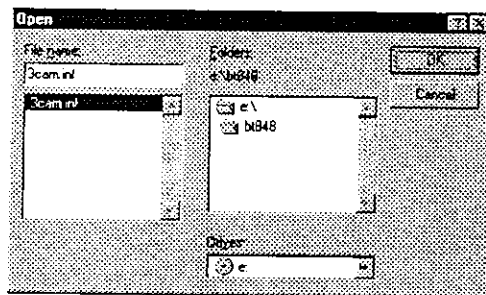
3. Select *No* when asked if you wanted Windows to search for your new hardware and click on *Next*.



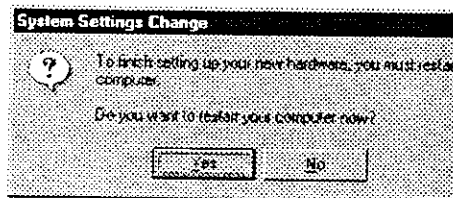
5. The Copying Files dialog box will ask you for the path of your driver. Click on the *Browse* icon.

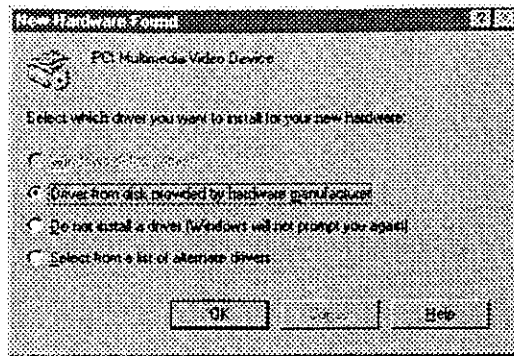


6. The Open dialog box will now appear. Specify the path: [Drive]:\3cam.inf if you are installing from diskette or [Drive]:\BT848\3cam.inf if you are installing from CD and click *OK*.



7. After the driver software is installed successfully, click on *Yes* to restart your computer for the driver to take effect.



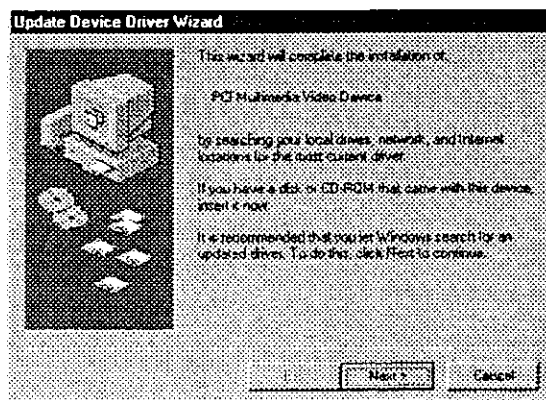


After finishing the installation, restart your system by clicking on *START - Shut Down - Restart System*.

Installing the Driver in Windows 95 OSR2

Follow the instructions below to install the device driver if your Windows 95 is an OSR2 version.

1. After starting up, Windows 95 will automatically detect your capture and the Update Device Driver Wizard will pop up. Click on *Next*.

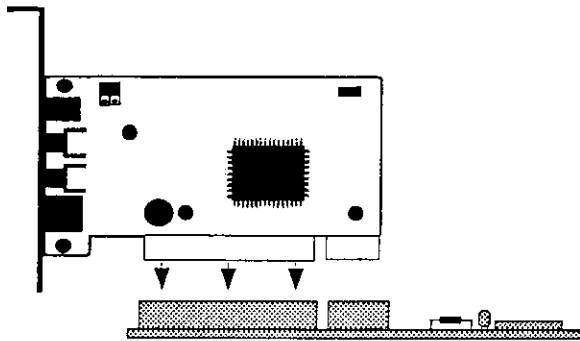


INSTALLING YOUR CAMERA

Hardware Installation

To install the PC Video Camera, please follow the instructions below:

1. Unplug the power cord from the back of your computer.
2. Remove the cover from the PC system.
3. Locate a free 8/16-bit PCI expansion slot.
4. Remove the slot cover screw and slot cover.
5. Take the capture card out of its protection cover and hold the card by its edges.
6. Position the card over the free PCI expansion slot and gently push the card into the slot.



7. Check carefully if the card has been inserted properly into the PCI slot (check if the connecting points of the card reach their respective connecting points of the PCI slot).
8. Re-insert the slot cover screw.

INTRODUCTION

Features

- Fully PCI Rev. 2.1 compliant
- Zero wait state PCI burst writes
- Supports image resolutions up to 768×576 (full PAL resolution) or 640×480 (full NTSC resolution)
- Image display size scalable from a full screen down to an icon using vertical & horizontal
- Interpolation filtering
- Supports NTSC/PAL/SECAM video systems
- Two Composite video and one S-video input sources
- With 5Vdc or 12Vdc DC-jack output
- Full motion video and still image capture capability
- Video display adjustment: Brightness, Contrast, Hue, and Saturation.

System Requirements

- Pentium 133 or higher
- System memory 32MB or higher
- PCI interface (PCI 2.1 compliance)
- Windows 95 or later version

FEDERAL COMMUNICATIONS COMMISSION

This device complies with Part 15 of the FCC Rules. Operation is subject to the following two conditions : (1) this device may not cause harmful interference, and (2) this device must accept any interference received, including interference that may cause undesired operation.

NOTE

This equipment has been tested and found to comply with the limits for a Class B digital device, pursuant to Part 15 of the FCC Rules. These limits are designed to provide reasonable protection. This equipment generates, uses and can radiated radio frequency energy and, if not installed and used in accordance with the instructions, may cause harmful interference to radio communications. However, there is no guarantee that interference will not occur in a particular installation. If this equipment does cause harmful interference to radio or television reception, which can be determined by turning the equipment off and on, the user is encouraged to try to correct the interference by one or more of the following measures:

- Reorient o relocate the receiving antenna.
- Increase the separation between the equipment and receiver.
- Connect the equipment into an outlet on a circuit different from that to which the receiver is connected.
- Consult the dealer or an experienced radio/TV technician for help.

Changes or modifications not expressly approved by the party responsible for compliance could void the user's authority to operate the equipment.