

SAFETY TURTLE WIRELESS GATE ALARM MODEL GA-101/GA-ML-101 OPERATING INSTRUCTIONS

1. The Safety Turtle® User Guide that comes with the Base Station explains the functionality of the Safety Turtle system and the Base Station. The following Instructions are supplemental to the Safety Turtle User Guide.
2. The Gate Alarm transmits but does not alarm locally. Alarming occurs only at the Safety Turtle Base Station, which is purchased separately. All Safety Turtle sensors [Turtles, Gate Alarms and Panic Buttons] must be one color to work with one Base Station. The baby Turtle coding plug and sensors all depict this color.
3. Refer to accompanying diagrams of models GA-101 and GA-ML-101 Gate Alarm. Note positions of adult bypass switch and LED.
4. The Gate Alarm is water resistant but not waterproof. Do not immerse or allow water to enter from the bottom.
5. Avoid prolonged depression of adult bypass switch which causes LED to be on.
6. Before the model GA-101 or GA-ML-101 Gate Alarm sensor/transmitter can function, it must be installed on a gate. See separate Gate Alarm INSTALLATION INSTRUCTIONS. The last step in the installation is to insert the battery into its holder. Do this after the Base Station is plugged in, with its green light on, and is not alarming.
7. If the Base Station alarms as soon as the Gate Alarm sensor battery is installed, check to make sure the gate is properly latched.

If pressing moon-shaped button on Base Station does not completely silence the alarm, the reed switch and magnet [see INSTALLATION INSTRUCTIONS] are spaced too far apart when the gate is latched, making it appear open to Gate Alarm's magnetic sensor. Lower or raise the reed switch in the extrusion [model GA-ML-101] or reduce the spacing between the reed switch and magnet [model GA-101]. If this does not work, remove the battery and call the manufacturer for assistance.

8. A Base Station will only alarm when it is in range of the signal transmitted by the installed Gate Alarm. Range varies to maximum of about 250 ft. [75 meters] and must be tested for each installation. To maximize range, locate the Base Station as high as possible and facing the coverage area, e.g. pool and/or alarmed gate(s). See "Locate the Base Station" in Initial Setup and Testing section of the Safety Turtle User Guide.

9. Test operation of the system as follows:

- Base Station should be in Test Mode with its amber light on [see Safety Turtle User Guide]
- **when testing the GA-101 model, gate should be unlatched but opened no further**
- beeping should start when gate is opened and stop within a few seconds of closing
- LED on gate alarm sensor should illuminate for about 11 seconds after adult bypass switch on top of unit is pressed
- during this period gate can be opened and closed without causing beeping to occur

7/28/2006

- after testing, Base Station should be returned to Active Mode [see Safety Turtle User Guide]

10. [optional if 9. succesful] Repeat 9. with the Base Station in Active Mode [amber light off]. Once Base Station alarms, press moon-shaped button to turn off.

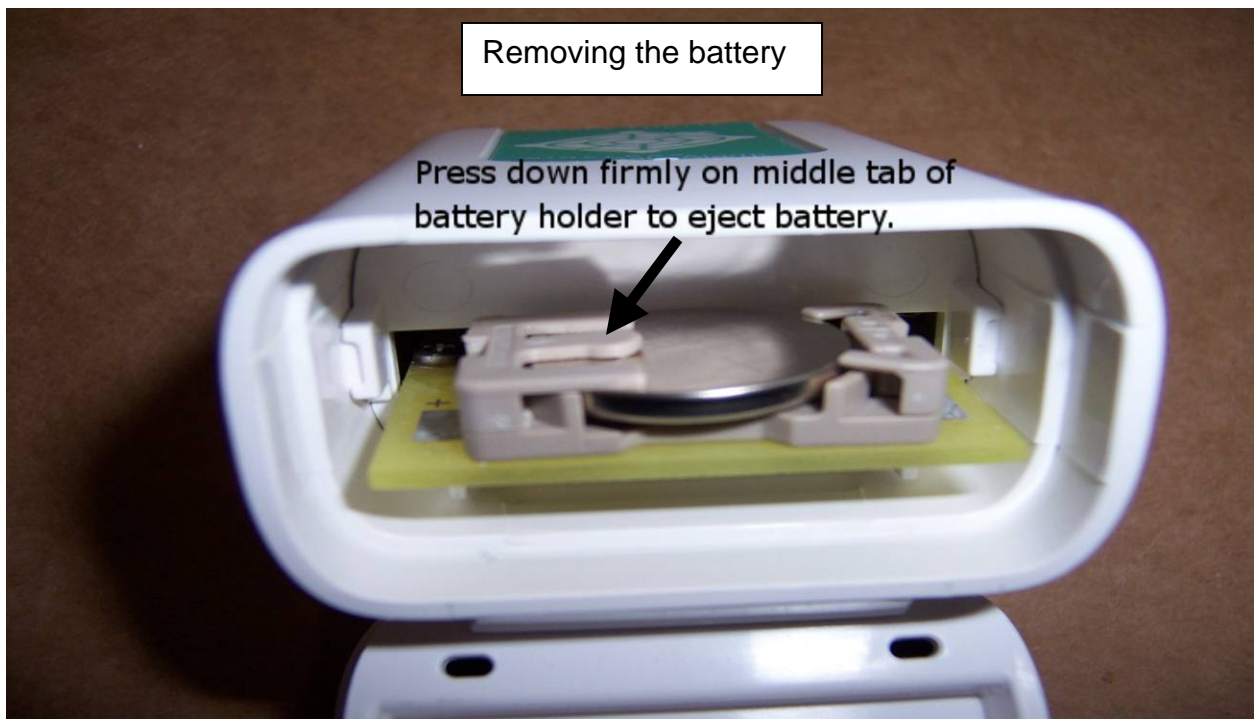
11. If no alarming occurs when testing the GA-101 model, open the gate wider. If this solves the problem, the spacing between the reed switch and the magnet when the gate is naturally resting on the latch needs to be increased very slightly, so alarming occurs in this situation also.

12. If the Base Station has not so far beeped or alarmed, it needs to be relocated where there is better reception of the signal from the Gate Alarm. See “Locate the Base Station” in Initial Setup and Testing section of the Safety Turtle User Guide.

13. If the system performs correctly in Active Mode but not Test Mode, the CR2032 battery in the Gate Alarm needs replacing [see Safety Turtle User Guide].

Installing the battery:

1. Separate the top and bottom halves of Gate Alarm housing and release battery from holder as shown below. Replace.
2. Reattach the top and bottom halves of Gate Alarm housing.
3. Retest the Gate Alarm.



14. The Safety Turtle gate alarm should be mounted as high as possible on the gate, with the adult bypass switch out of site and out of reach of young children. A visible reminder to use bypass switch is not recommended.

7/28/2006

15. Safety Turtle is not a substitute for diligent supervision or an adequate barrier to restrict the access of children to water hazards.

16. The gate alarm sensor is warranted for one year from date of purchase. Damage or the effects of misuse are not covered by this warranty. See Safety Turtle User Guide for customer support information.

17. Please call Terrapin's toll-free customer support line at **1-800-368-8121** or email **service@terrapiin.ca** if you need further help.

Federal Communications Commission (FCC) Notice

This device complies with FCC Part 15 Rules and Industry Canada RSS 210 Issue 2 Regulations. Operation is subject to the following two conditions:

™ this device may not cause harmful interference; and,

™ this device must accept any interference received, including interference that may cause undesired operation.

Changes or modifications not expressly approved by Terrapin Communications Inc. could void the user's authority to operate the equipment.

