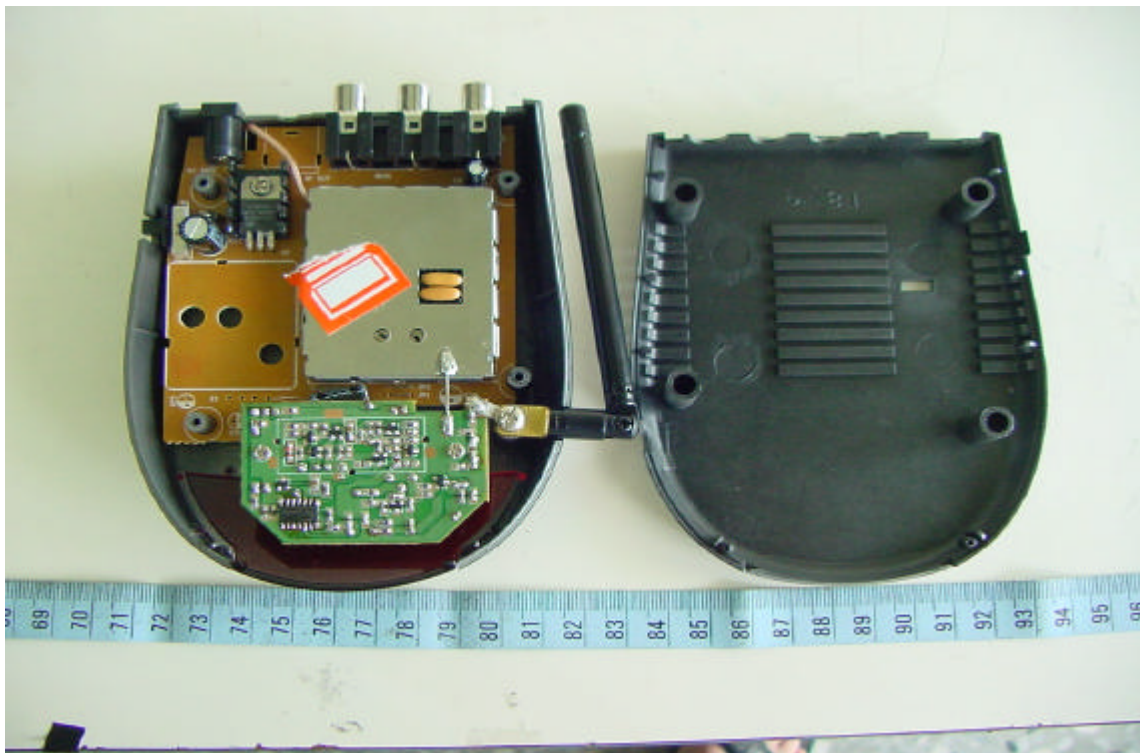


CONSTRUCTED PHOTOS of EUT

Rear View of Receiver

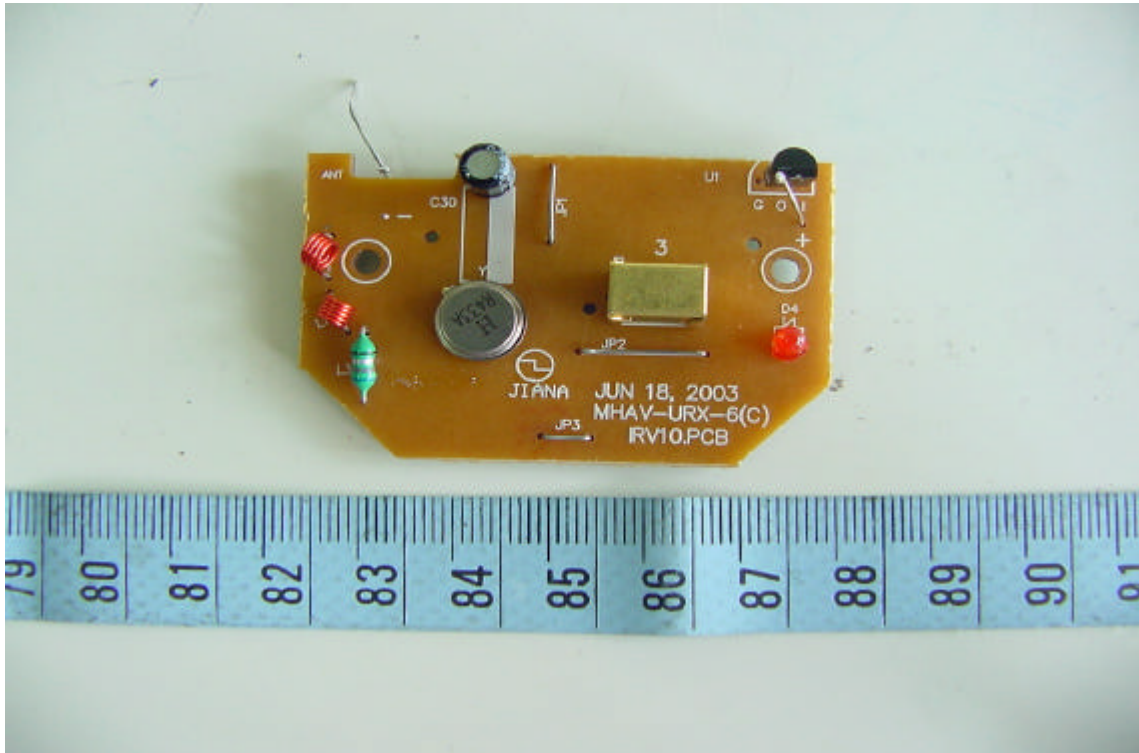


Internal View of Receiver

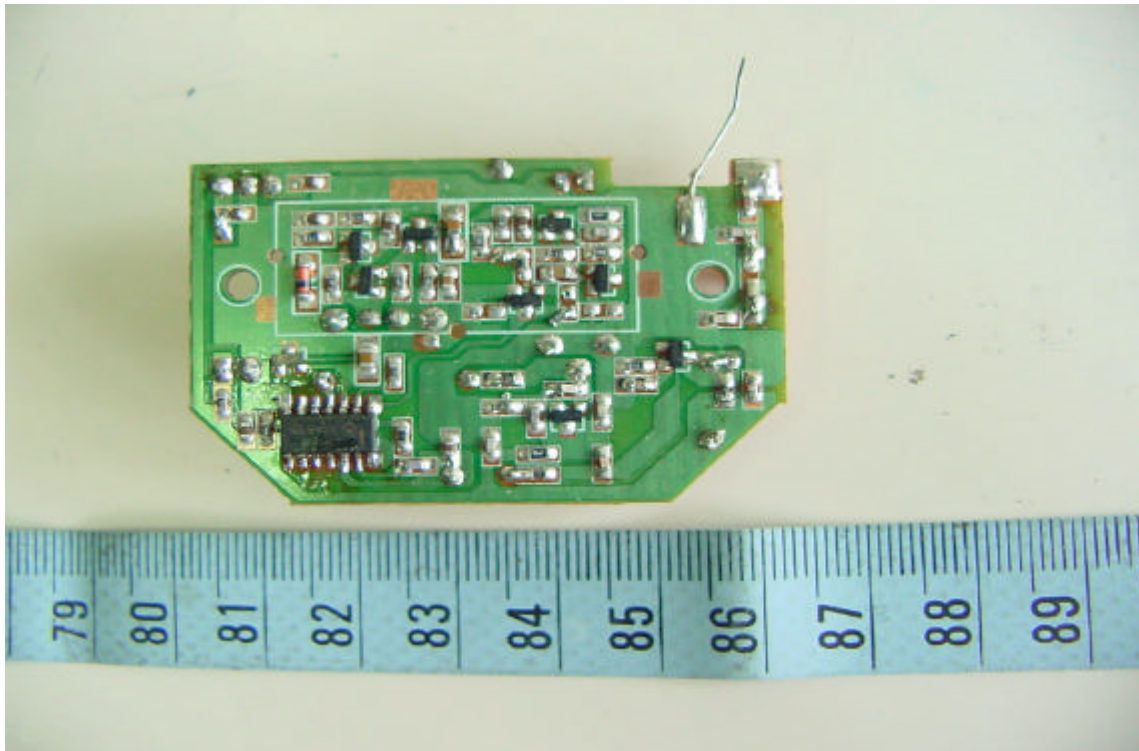


CONSTRUCTED PHOTOS of EUT

Component View of Main PCB (Receiver)

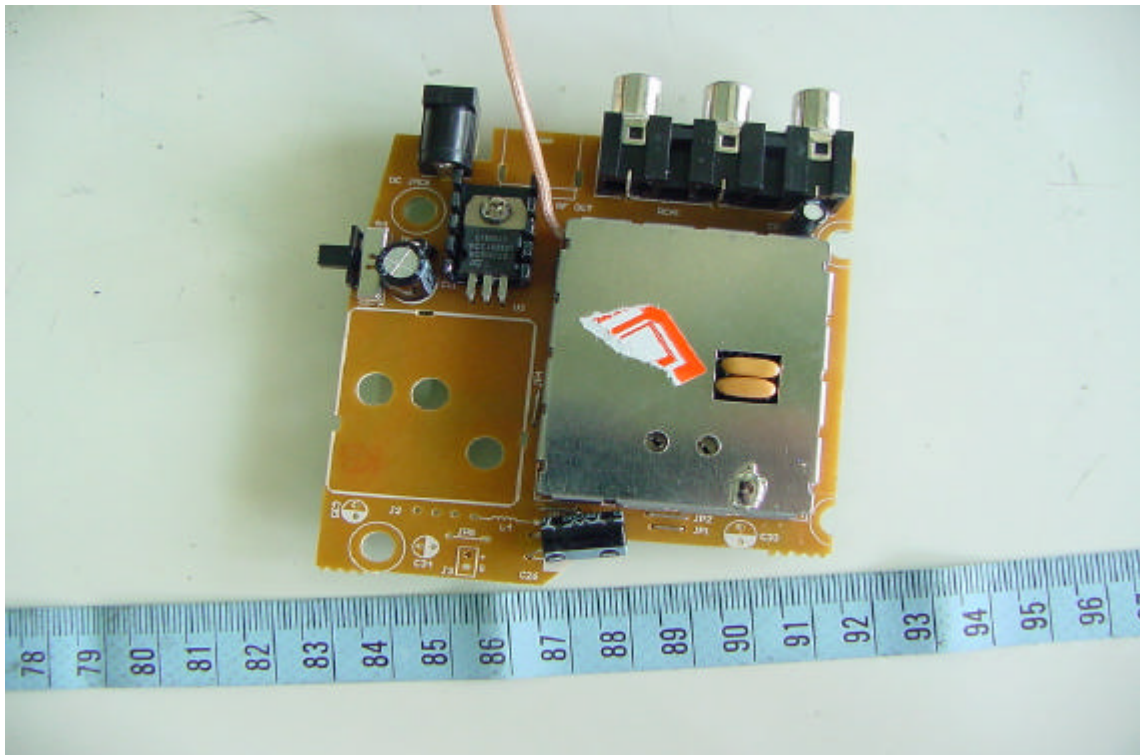


Solder View of Main PCB (Receiver)

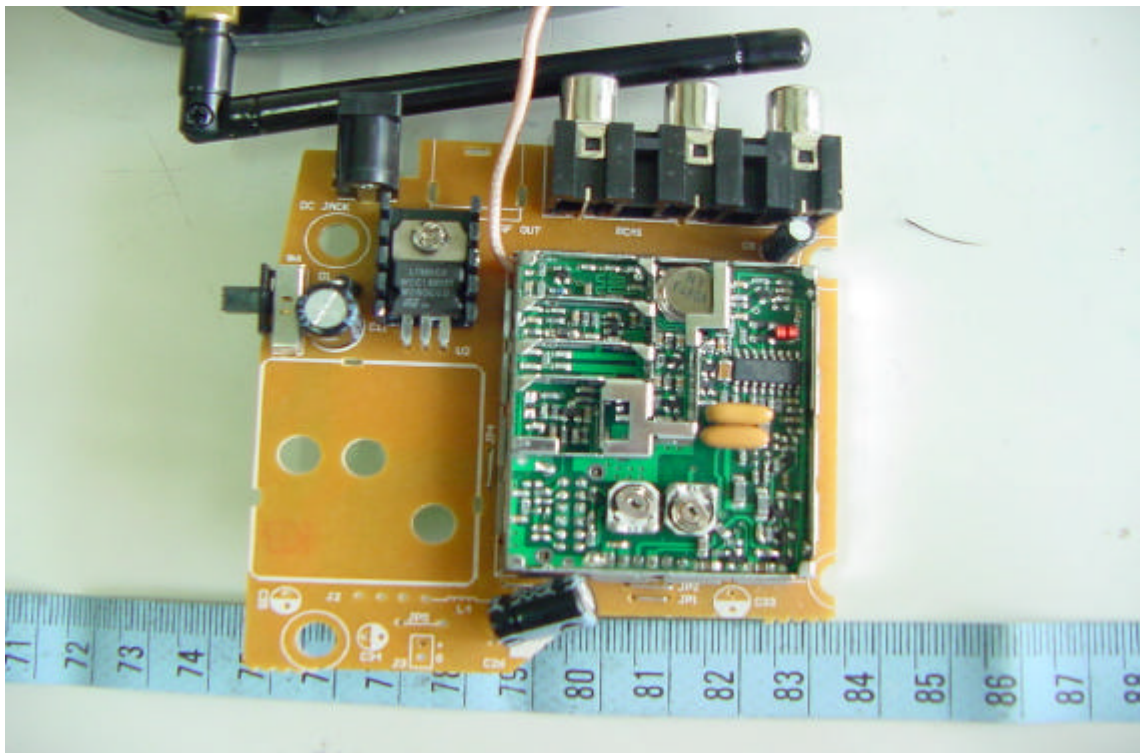


CONSTRUCTED PHOTOS of EUT

Component View of Main PCB (Receiver)

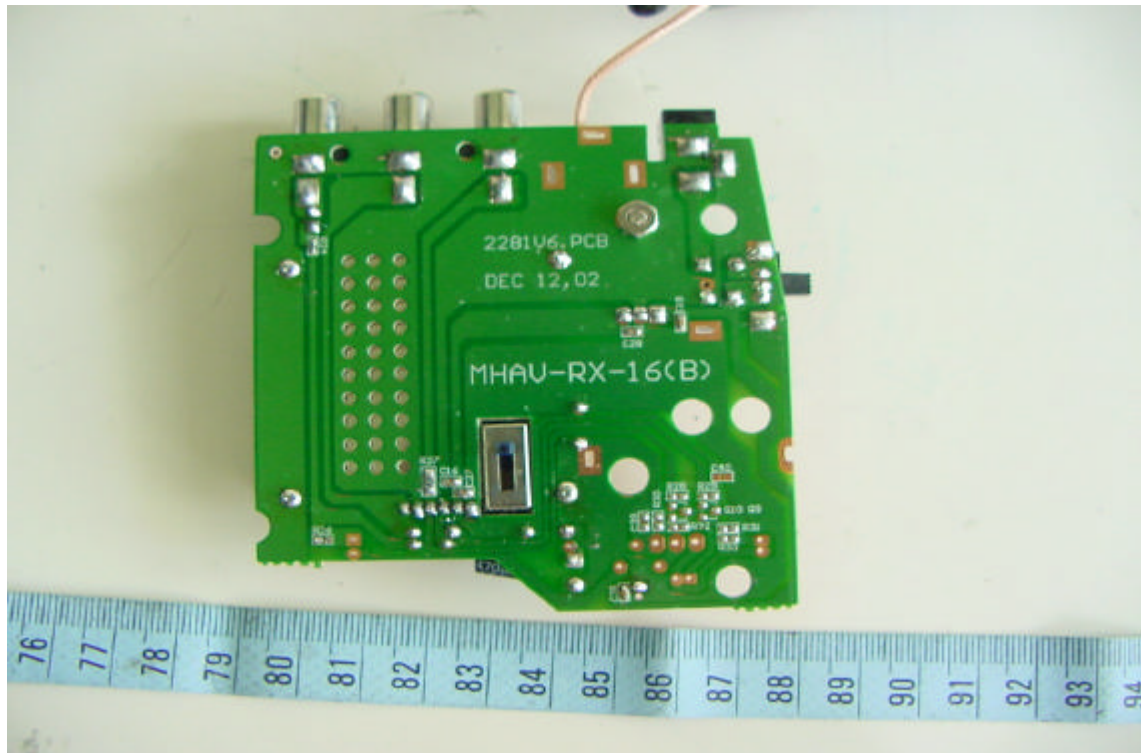


Component View of Main PCB (Receiver)



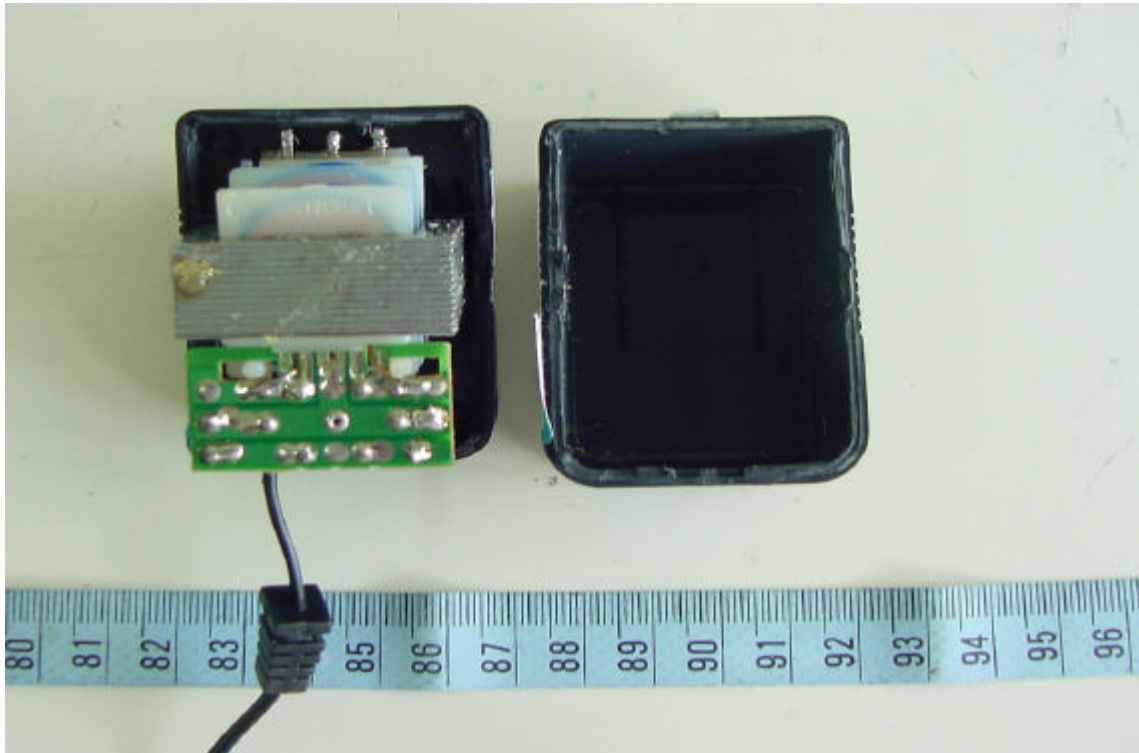
CONSTRUCTED PHOTOS of EUT

Solder View of Main PCB (Receiver)



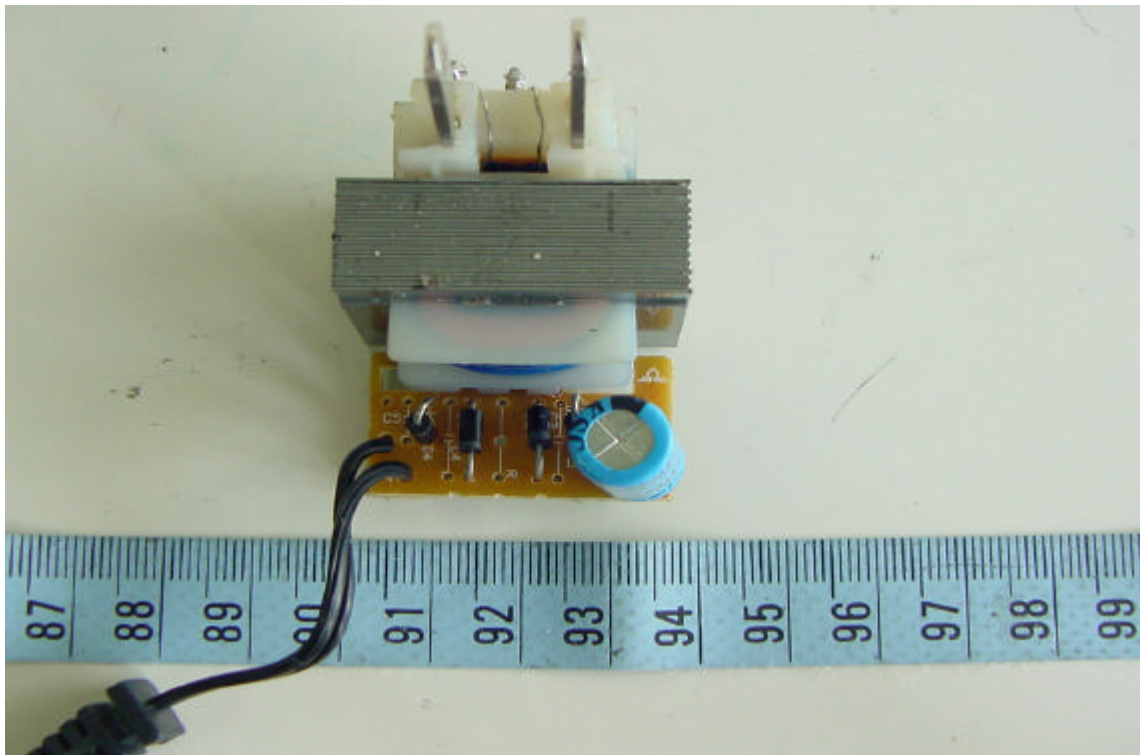
CONSTRUCTED PHOTOS of EUT

Internal View of Adaptor



CONSTRUCTED PHOTOS of EUT

Component View of Adaptor's PCB



Solder View of Adaptor's PCB

