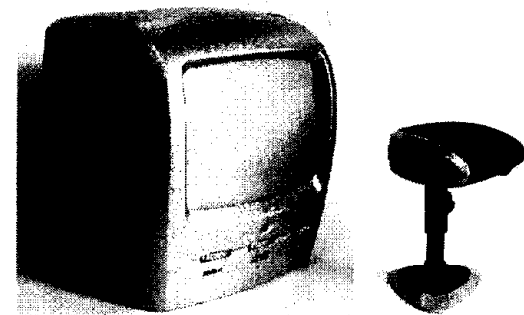

MODEL 2273
2.4GHz WIRELESS CAMERA SYSTEM
OWNER'S MANUAL
(PLEASE READ BEFORE USE)

JESMAY ELECTRONICS CO., LTD
ROOM 1004, STANHOPE HOUSE
738 KING'S ROAD,
QUARRY BAY, Hong Kong

TEL: (852) 2563 4292, 2562 6212
FAX: (852) 2565 7026, 2516 9417
E-mail: info@jesmay.com.hk
Web Site: <http://www.jesmay.com.hk>



FC C E0336 ⓘ

Important – Safety Precautions

1. To prevent fire or shock hazard, do not expose this device to rain or moisture.
2. Do not use this video device near water. For example, a bathtub, wash bowl, kitchen sink, laundry tub or swimming pool, or in a wet basement.
3. No naked flame sources, such as lighted candles, should be placed on this device.
4. To avoid electrical shock, do not open this device, and do not insert any metallic object through the ventilation grills.
5. There is 10cm minimum distance around this device for sufficient ventilation.
6. The ventilation should not be impeded by covering the ventilation openings with items, such as newspapers, table cloths, curtains, etc.
7. This device should be operated to use only the power supply included with it or provided as an accessory.
8. Do not overload wall outlets and extension cords as this can result in the risk of fire or electrical shock.
9. Do not place this device on an unstable cart, stand, or table. The device may fall, causing spurious injury to a child or adult, and serious damage to the device. Wall or shelf mounting should follow the manufacturer's instructions and should be done with a mounting kit approved by the manufacture.

Caution 1:

Changes or modifications not expressly approved by the party responsible for compliance could void the user's authority to operate the equipment.

Caution 2: AC/DC adaptor

Handle the AC adaptor carefully; improper handling is dangerous.

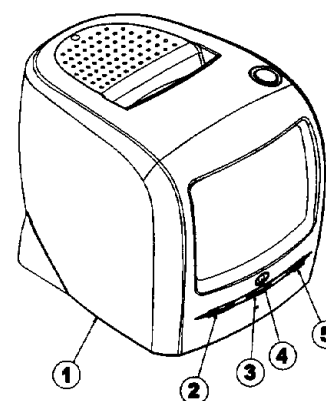
- Do not touch it with wet hands.
- Do not place heavy objects on top of it.
- Do not forcibly bend it.
- Be sure to connect only the AC/DC adaptor provided with the device.
- Disconnect the AC/DC adaptor from the power outlet if the device is not going to be used for a long time.

What You Get

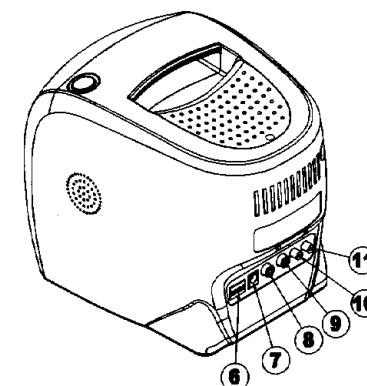
- One camera
- One monitor
- Two power adapters
- This User's Manual

Product Layout

Monitor

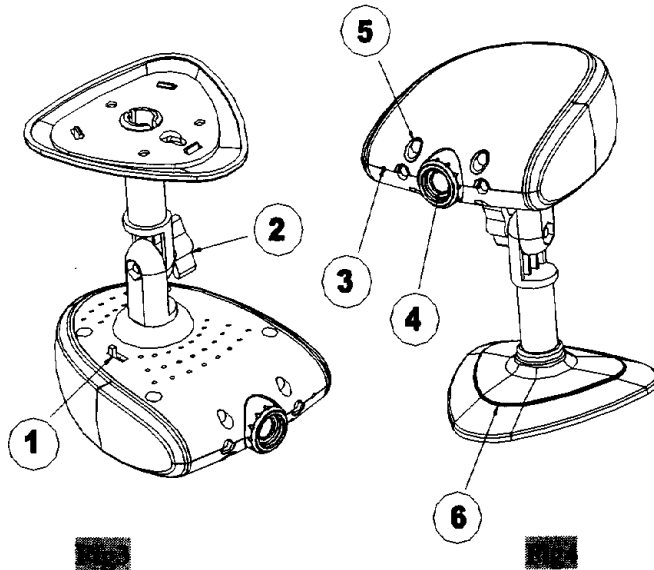


1. Battery Compartment
2. Brightness(BRIGHT)
3. Volume
4. Power Indicator
5. Screen ON/OFF/Power Control



6. Channel Selection Dipswitches
7. DC Jack
8. Video Output Jack(Yellow)
9. Audio Output Jack(White)
10. Contrast
11. V-HOLD

Camera



1. Channel Selection Switches
2. Screw for Fixing Angle
3. Microphone
4. Lens
5. Infrared LEDs (provide infrared light for night vision)
6. Mounting bracket

Setting UP

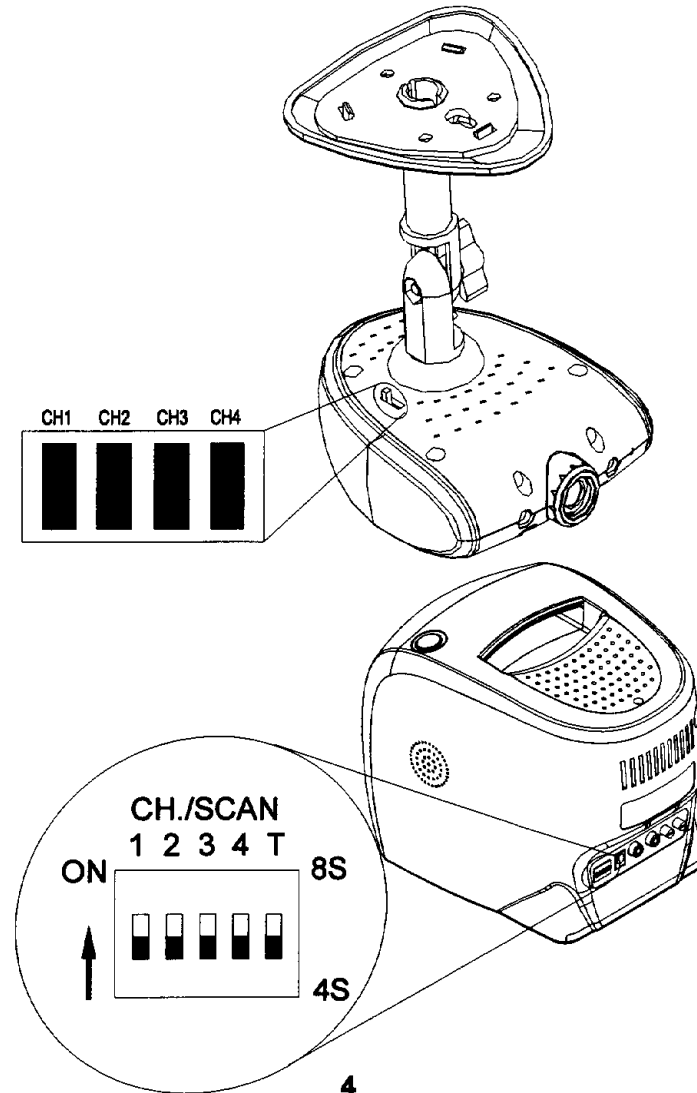
1 Select Channels

The camera and monitor **MUST BE** set at the same channel.

1.1 Select the channel on the camera by sliding the slide switches on the back of the camera. See Fig5

1.2 Select the channel on the monitor by setting the dipswitch to the **ON** position.

The dipswitches are numbered 1 to 4 are for channel setting. The T dipswitch sets the timer for the auto-sequence function . See Fig6



2 Setting up the monitor

2.1 Power supply

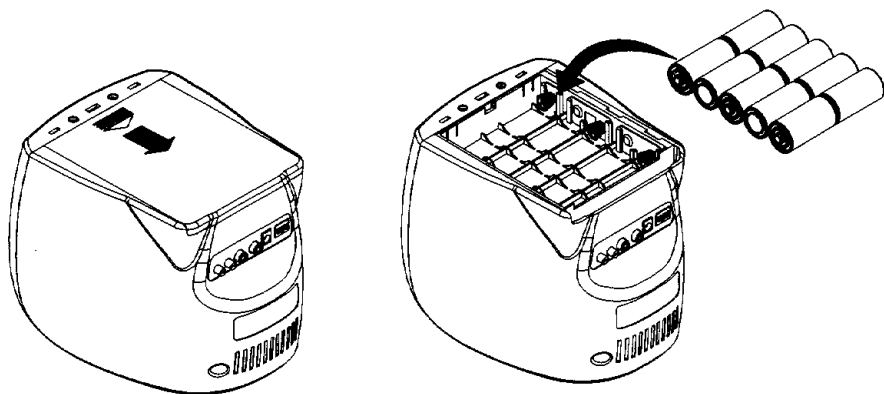
The monitor uses either batteries(C-site) or household AC current.

To load batteries

1. Open the batteries compartment cover in the direction of the arrow.
2. Insert batteries so their plus(+) and minus(-) ends are facing as shown in Fig7.
3. Close the batteries compartment cover. Make sure the battery compartment cover is locked securely.

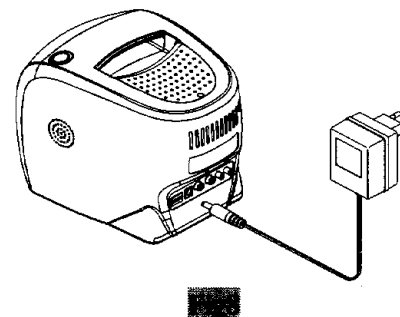
Note: Never mix old batteries with new ones. Remove batteries from the monitor if you do not plan to use it for a period of time.

4. Turn the monitor on. Adjust the volume control to a comfortable level.



Using AC Power

1. Plug one end of provided power adapter into a wall outlet and the other end into the rear of the monitor. See Fig8.
2. Turn the monitor on. Adjust the volume control to a comfortable level.



2.2 Fine tuning

1. Adjust the video image using the V-HOLD, CONTRAST and BRIGHTNESS adjustment knobs on the monitor, as needed.
2. Place the monitor in a convenient location, then adjust its direction so that the video image is best.(The camera is set up)

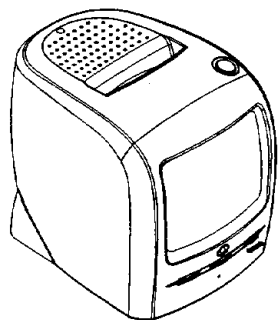
3 Setting up the camera

The camera can be mounted to a wall. Monitor reception should be tested before fixing the camera. Have one person hold the camera in the proposed mounting position while another checks the reception on a monitor. If interference or other problems are present, refer to the "Troubleshooting" section of this manual. You may need to select a different location to mount the camera. See Fig9.

3.1 Fine Tuning

1. Adjust the camera's viewing angle by turning its body.
2. Loosen the screw on the bottom of bracket and rotate the camera to make adjustments.
3. When satisfied with the picture coverage, retighten the screw.

Note: After adjusting the viewing angle, make sure the camera body is attached to the pivot of the bracket tightly.

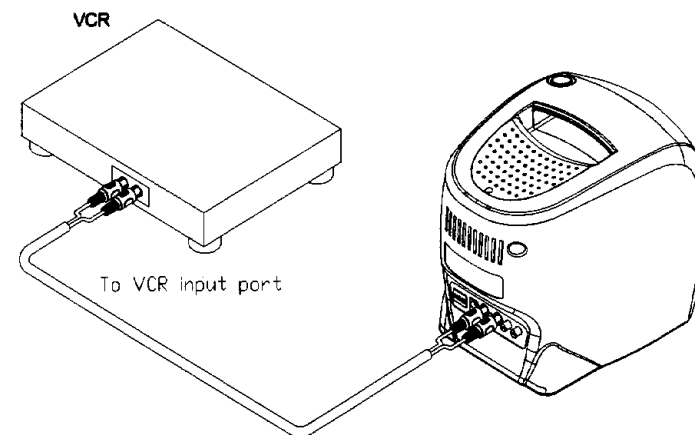


Other Applications

Recording on a VCR

The monitor comes with AV (audio/video) output jacks for connecting to a VCR for recording. See Fig10.

Connect the AV cable's(option) white and yellow plugs to the white and yellow AV jacks of the monitor and to the white and yellow input jacks of the VCR, matching the plug colors with the jacks on both the monitor and VCR.



Audio Only

Screen can be turn off for audio monitoring only. To turn off the screen, slide the slide switches on the front of the monitor to position A.

Multi-location monitoring

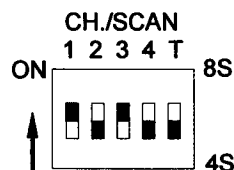
The monitor's build in auto-sequence function is ideal for security use. The monitor can be used with up to four cameras on four different channels and display them in sequence on a single monitor.

Note1: The monitor will auto detect the receiving channels, and display them in sequence. When only one channel dipswitch is in the ON position, the monitor will display that channel continuously, without regard to the position of the T dipswitch. If more than one dipswitch remains on, the auto-sequence function will alternately display those channel.

Note2: When none of the dipswitches are in the ON position, the monitor will automatically set the receiving channel to channel 1.

Example:

If you have two wireless cameras and their channels are set on CHANNEL 1 and CHANNEL 3, and you wish to monitor the two channels in sequence, you must slide up the first and third dipswitches to the ON position(see the diagram below). If you wish those two channels to be alternated at eight-second intervals, slide the T dipswitch to the ON position. Leave it in the lower position for four-second channel change intervals.



Stopping the auto-sequence function

To stop the auto-sequence function and lock on to one channel, leave the dipswitch for the channel you want to receive in the ON position, slide the others to the lower position.

4.Troubleshooting

1. If you are not getting any signal at all

- Make sure the power supply switches on the front of the monitor are in the "A" or "A/V" position.

- If the monitor is powered by batteries, replace all batteries with new ones.
- Check correct position of all the connectors and plugs.
- Make sure the transmitter and the receiver are on the same channel.

2. If the signal is poor, or there is Interference

- Make sure antenna of the transmitter and the receiver are in correct alignment.
- Adjust the transmitter and the receiver to closer position.
- If a microwave oven or electro-magnetic oven is in use, turn it off and try the product again.
- Use other channels for the transmitter and the receiver.

5. Technical specifications

Camera

- Image sensor : 1/4 " B/W CMOS
- Lens: F2.0/f3.6
- Picture element: 352(H)x288(V) CCIR
or 320(H)x240(V) EIA
- Transmit Frequency: ~~2.414~~ ~ 2.468 GHz (4 channels)
- Output power (max): 0dBm (FCC)、10dBm (CE)
- Operational range: up to 100 meters (open air situation)
- Modulation: FM
- Channel design: PLL frequency synthesizes
- Antenna: built-in omni-directional antenna
- Power supply (optional): 9VDC, 400mA
- Dimension: 105mm*82mm*127mm
With mounting bracket
- Weight: 200g

Monitor

1. Receiver Frequency: ~~2414~~ ~2,468.4MHz (4 channels)
2. Receiver sensitivity: -80dBm
3. Channel design: PLL frequency synthesizes
4. Modulation: FM
5. Antenna: built-in directional antenna
6. Display: 5.5" B/W monitor
7. Resolution: 320 TV lines
8. AV output port:: RCA
9. Power supply(optional): 12VDC, 1200mA
or 10 C-size batteries
10. Dimension: 200mm*155mm*165mm
11. Weight: 1430g without batteries