
2.4GHz WIRELESS COLOR CAMERA KIT

OWNER'S MANUAL

(PLEASE READ BEFORE USE)



TX



RX

Chapter Table of Contents	Page
1. Read this first.....	2
2. The 2.4GHz Wireless Color Camera Kit.....	3-8
3. Installation of the system.....	8-10
4. Trouble –shooting.....	11
5. Technical specifications.....	12

1. Important-Safety Precautions

This device of which operation is subject to the following two conditions:

1. This device may not cause harmful interference, and
 2. This device must accept any interference received, including interference that may cause undesired operation.
- To prevent fire or shock hazard, do not expose this device to rain or moisture. Do not use near a bathtub, washbowl, kitchen sink, or laundry tub, in a wet basement, or near a swimming pool.
 - To avoid electrical shock, do not open this device.
 - This device should be operated to use only the power supply included with it or provided as an accessory.
 - Do not overload wall outlets and extension cords as this can result in the risk of fire or electrical shock.
 - Do not attempt to service this device yourself. Refer servicing to qualified personnel only.

Note:

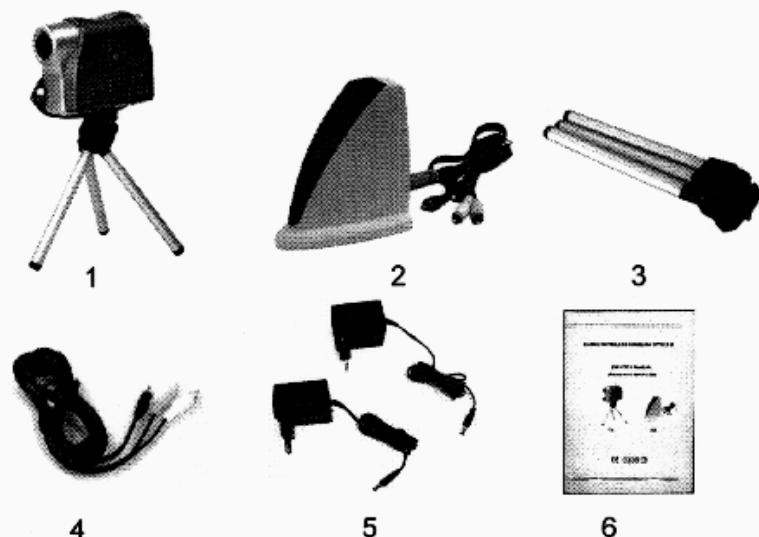
This equipment has been tested and found to comply with the limits for a class B digital device, pursuant to Part 15 of the FCC Rules, or BZT and CE EMC directive. These limits are designed to provide reasonable protection against harmful interference in a residential installation. This equipment generates, uses and can radiate radio frequency energy, if not installed and used in accordance with the instruction, it may cause harmful interference to radio communications. However, there is no guarantee that interference will not occur in a particular installation. If this equipment does cause harmful interference to radio or television reception, which can be determined by turning the equipment off and on, the user is encouraged to try to correct the interference by one or more of the following measures:

- Reorient or relocate the receiving antenna.
- Increase the separation between the equipment and receiver.
- Connect the equipment into an outlet on a circuit different from that to which the receiver is connected.
- Consult the dealer or an experienced radio/TV technician for help.

Caution: Changes or modifications not expressly approved by the Party responsible for compliance could void the user's authority to operate the equipment.

2. The 2.4GHz Wireless Color Camera Kit

2-1 Packaging and accessories



1. One Camera
2. One Receiver
3. One set camera tripod mounting
4. Two Audio/Video cables
5. Two power adapters (9VDC/150mA at Camera)
(9VDC/300mA at Receiver)
6. One owner's manual in English

2-2 Control Elements, Transmitter

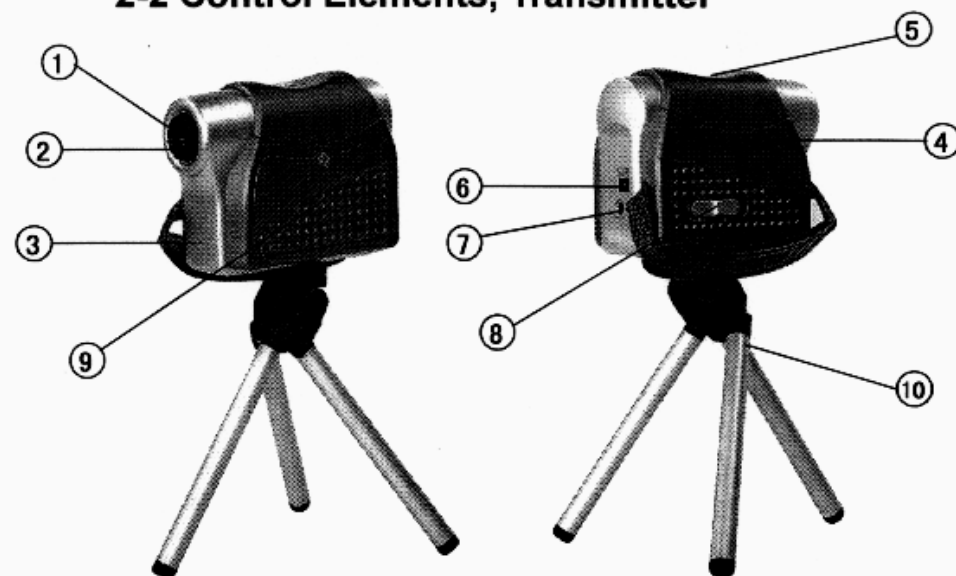


Fig1

Fig2

1. 1/3" CMOS color image sensor
2. Focus knob adjust for optimum reception
3. Built-in microphone
4. Power indicator LED (light-emitting diode)
5. Power ON/OFF switch
6. DC input jack (9VDC 150mA)
7. Audio/Video output socket
8. Channel selection switch (See Fig3)
Select the channel by sliding the slide switch to the channel number
you want (CH1 CH2 CH3 CH4 any one)
9. Battery compartment (9VDC 6F22 Battery)
10. Camera tripod mounting

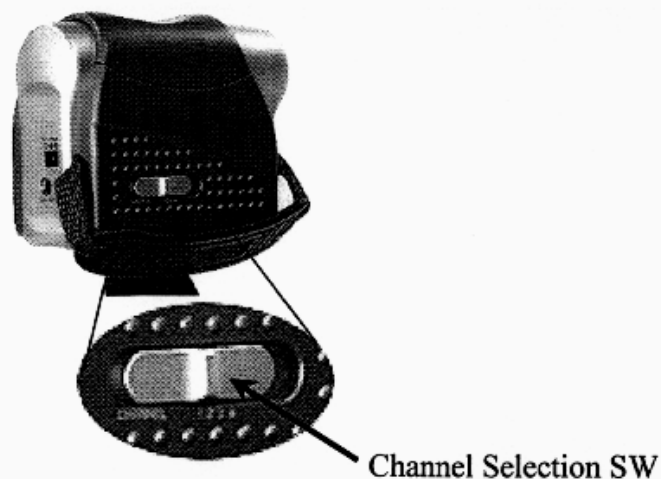


Fig3

2-3. Control Element, Receiver

Front View of Receiver

Rear View of Receiver

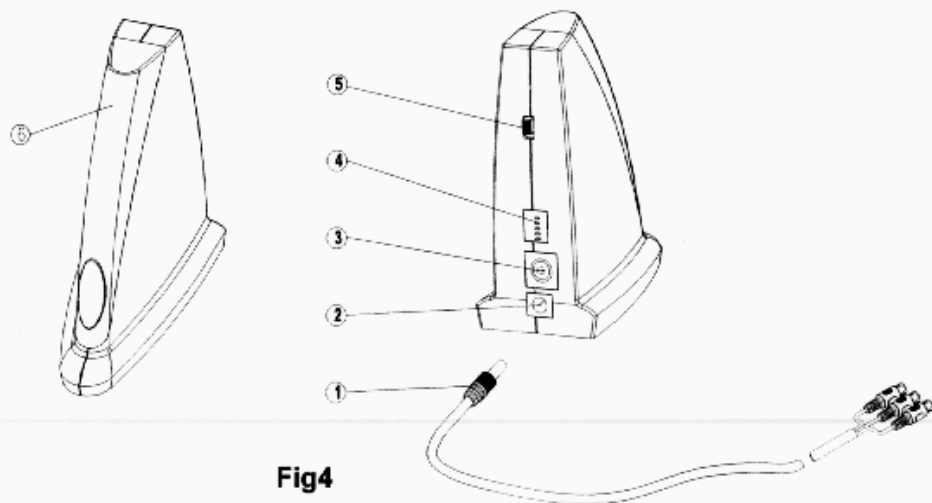


Fig4

1. AV output cable with RCA or SCART
2. 9VDC power adapter jack
3. AV output MINDIN jack

4. Channel selection DIP SW (as shown in Fig5)
Select the channel by setting the channel DIP SW to the ON position.



Fig5. CHANNEL SELECT DIP SW

DIP SW Function:

DIP SWS1-4: set one channel or multi-channel sequence function.

By setting multi-channel DIP SW to the ON position, channel changes every four seconds

5. Power ON/OFF switch
 6. Channel indicator BLUE LED
 - BLUE LED blinks according to the channel number you want
- Note: channel is shown with the blinking times of BLUE LED at intervals of 4 seconds by setting the position of DIP SW (Double In-line Package switch).

Examples:

A. Factory Preset Mode:



B. Fix's one channel Mode:

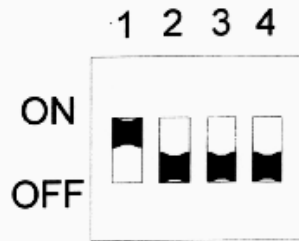


Fig 1

Fig 1: Channel 1 is selected.

BLUE LED located on front of the Receiver will blink once at intervals of 4 seconds.



Fig 2

Fig 2: Channel 3 is selected.

BLUE LED will blink 3 times at intervals of 4 seconds.

C. Automatic channel sequence mode:



Fig 3

Fig 3: Channel 1 and channel 3 are selected in sequence.

BLUE LED will blink once and 3 times in cyclical sequence at intervals 4 seconds.



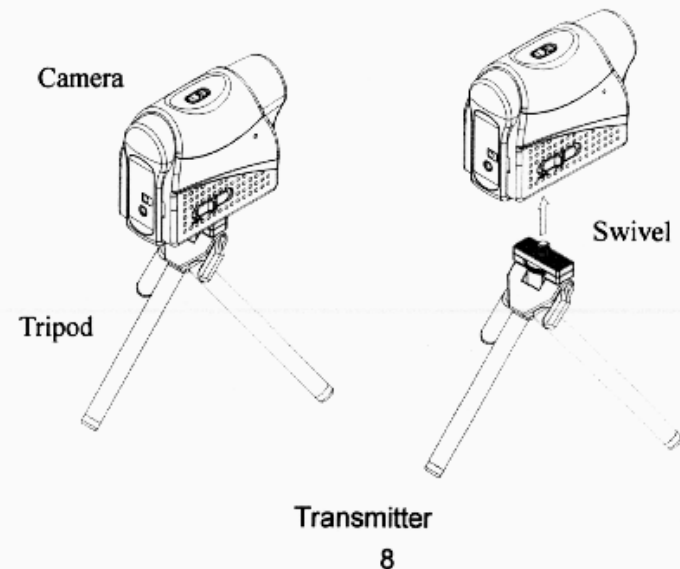
Fig 4

Fig 4: Channel 1, channel 2, channel 3 and channel 4 are selected in sequence.

BLUE LED will blink once and 2 times and 3 times and 4 times in cyclical sequence at intervals 4 seconds.

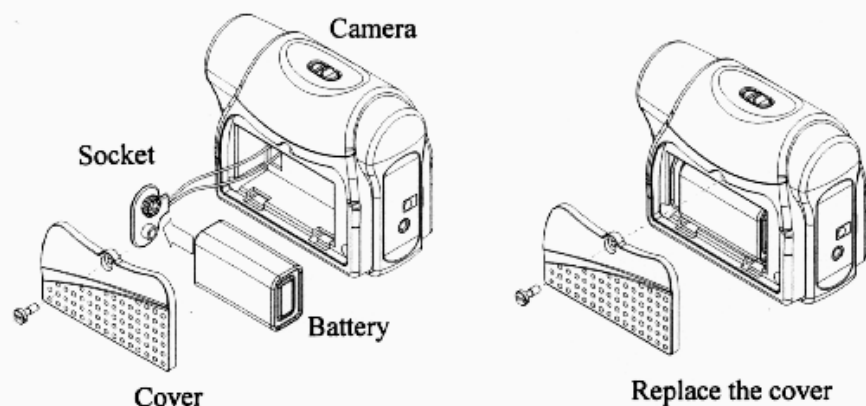
3. Installation of the system

3-1 Camera tripod mounting

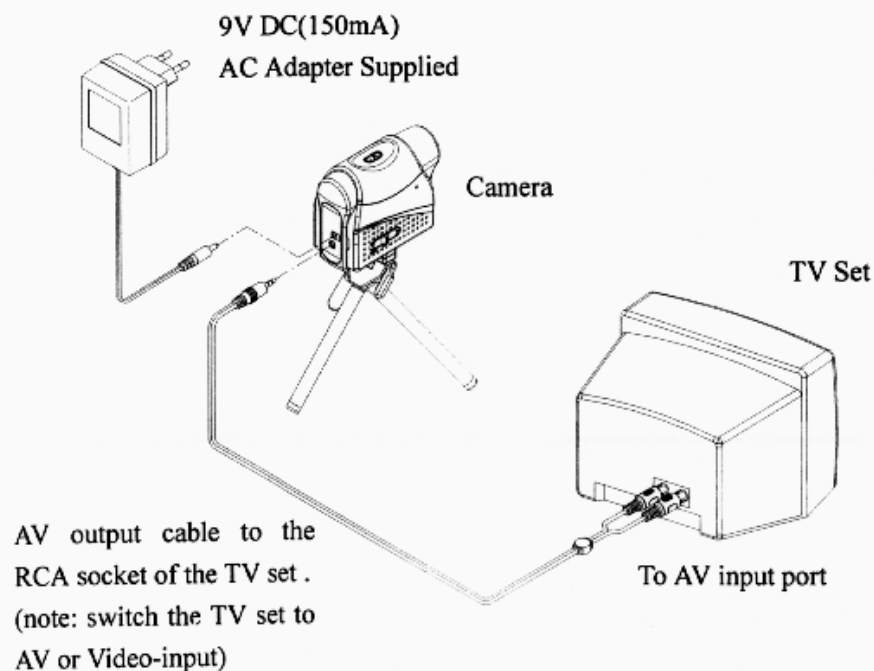


3-2 Transmitter

9VDC 150mA AC Adapter (Camera) or 9VDC Battery



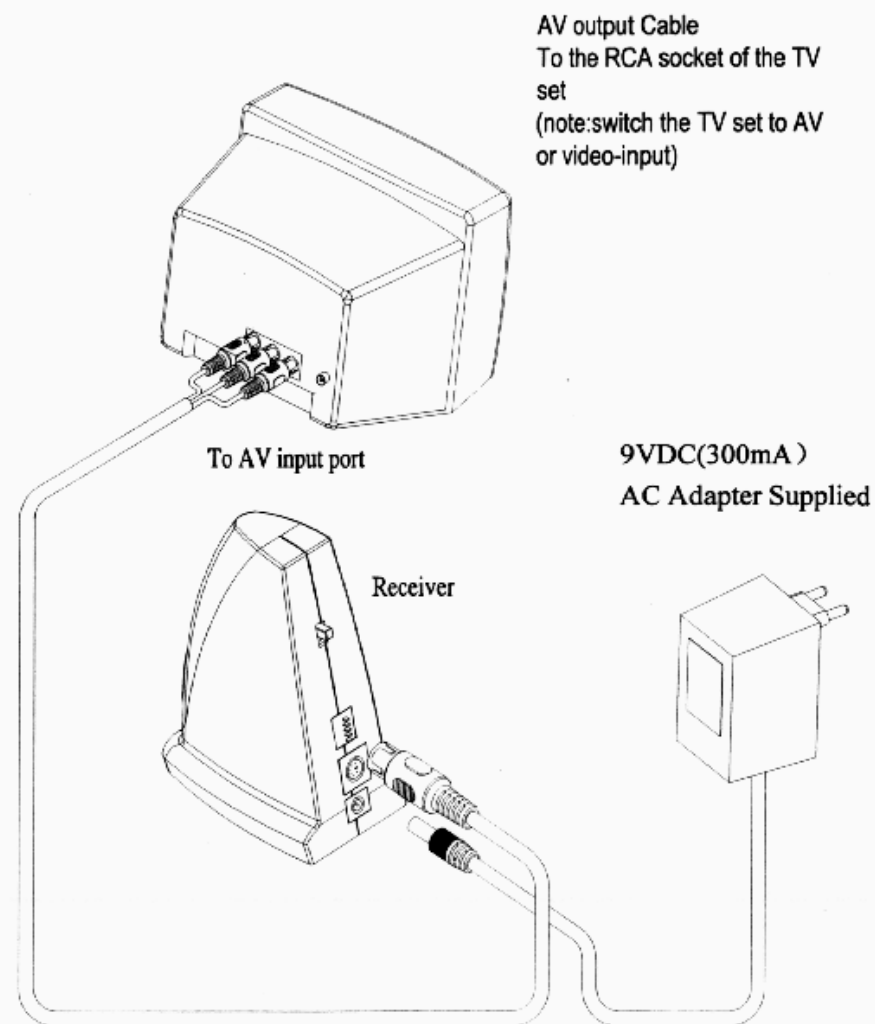
AV Output Cable (Camera) as necessary



3-3 Receiver

9VDC 300mA AC Adapter (Receiver)

AV Output Cable (Receiver)



4. Trouble –shooting

1. No image or sound
 - a. Make sure the power supply switches on the back of the receiver and on the top of the transmitter are in the "ON" position.
 - b. If this 9VDC Battery power is in low power condition, can changing the new 9VDC Battery.
 - c. Check correct position of all the connectors and plugs.
 - d. Make sure the transmitter and the receiver are on the same channel.
2. Interruptions in image and sound
 - a. Make sure position of the transmitter and the receiver are in correct alignment.
 - b. Adjust the transmitter and the receiver to closer position.
 - c. If a microwave oven or electro-magnetic oven is in use, turn it off and try the product again.
 - d. Use other channel for the transmitter and the receiver.

5. Technical specifications

Camera transmitter

1. 1/3 " CMOS color image sensor (PAL or NTSC)
2. Transmit Frequency: 2.400 ~ 2.483GHz (4 channels)
3. Output power (max): 0dBm (FCC); 10dBm (CE)
4. Operational range: up to 100 meters (open air situation)
5. Modulation: FM
6. Channel design: PLL frequency synthesizes
7. Antenna: hide omni-directional antenna
8. Power consumption (max): 1 Watts
9. Power supply (optional): 230VAC to 9VDC, 150mA
or 120VAC to 9VDC, 150mA
or DC9V 6F22 Battery
10. Dimension: 100mm*73mm*43mm
11. Weight: 150g

Receiver

1. Receiver Frequency: 2.4 ~ 2.483GHz (4 channels)
2. Receiver sensitivity: -80dBm
3. Noise Figure: 3.5dB
4. Channel design: PLL frequency synthesizes
5. AV output port: one RCA or SCART with cable
6. Antenna: hide omni-directional antenna
7. Power supply (optional): 230VAC to 9VDC, 300mA
or 120VAC to 9VDC, 300mA
8. Power consumption (max): 2.2 Watts
9. Dimension: 105mm*50mm*115mm
10. Weight: 140g