



GE HARRIS
Railway Electronics

Document No. 5001365

16 April 1999

Exhibit H

Photographs

H.1 Photographs

See also, Exhibit G: Intentional Radiator Test Report,
Section 5.0: Test Sample Setup and Configurations.

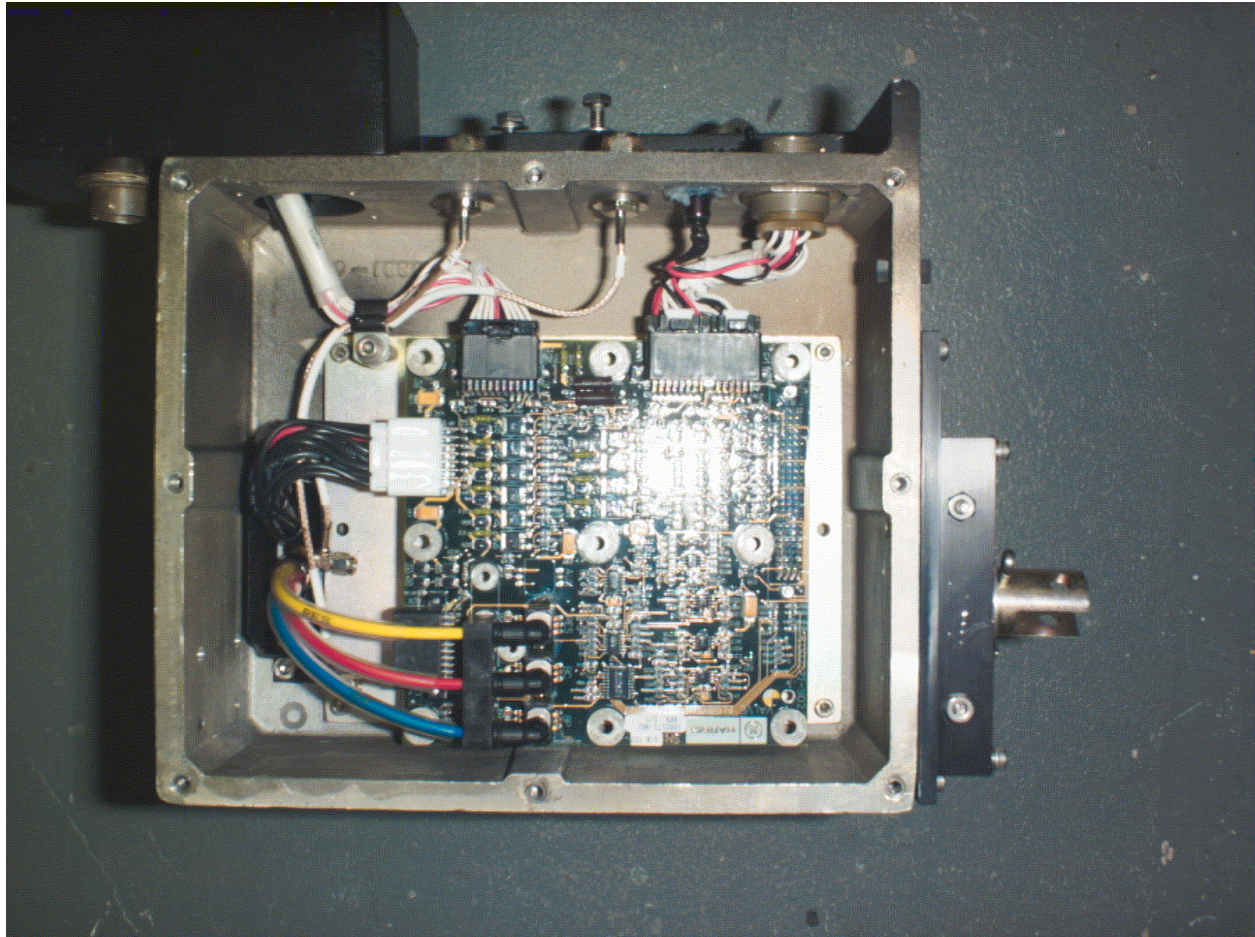


Photo H.1 Internal View of the CCU

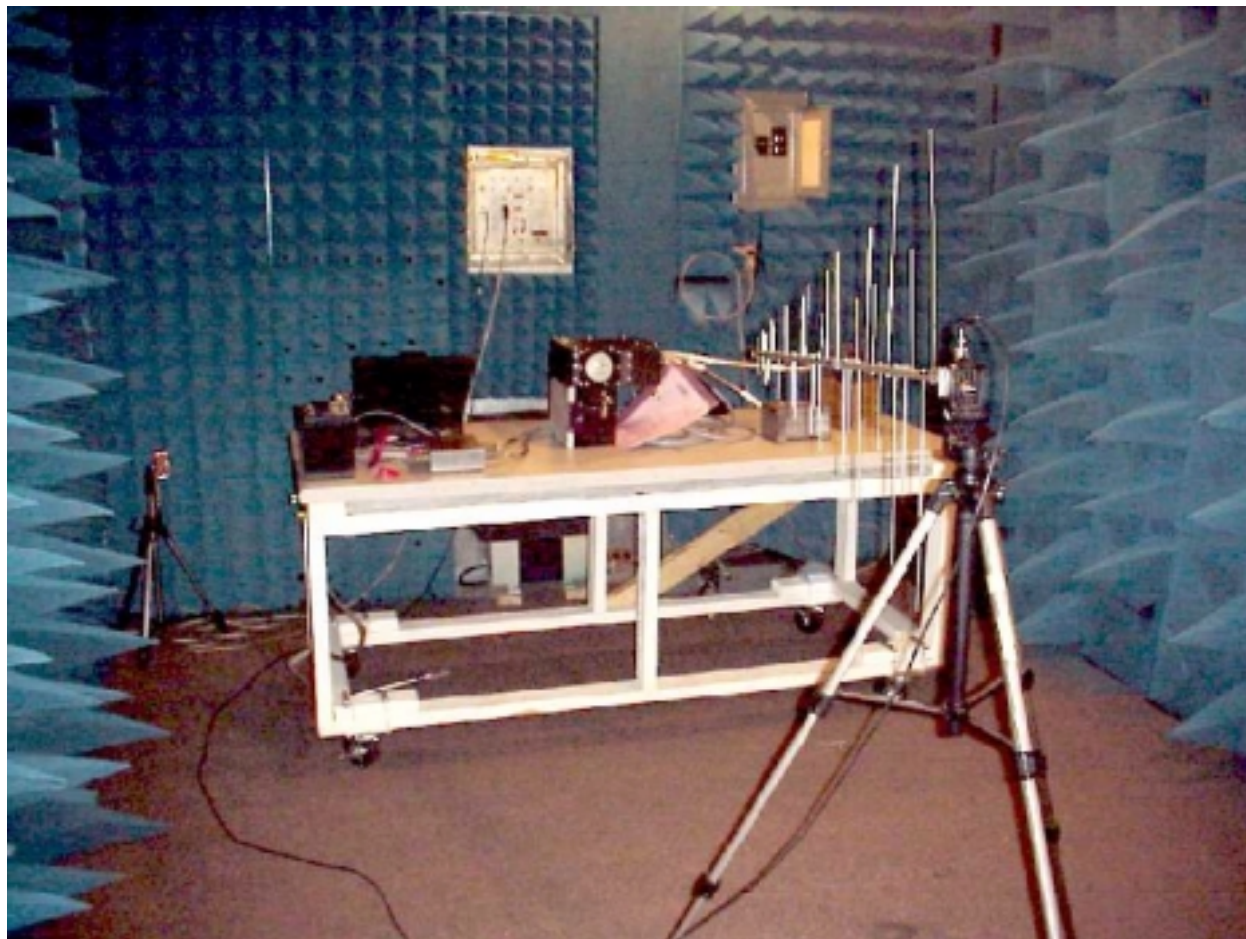


Photo H.2 CCU RF Chamber Test Setup at Rubicom Systems, Inc.



Photo H.3 CCU test setup at Rubicom Systems, Inc.



GE HARRIS
Railway Electronics

Document No. 5001365

16 April 1999

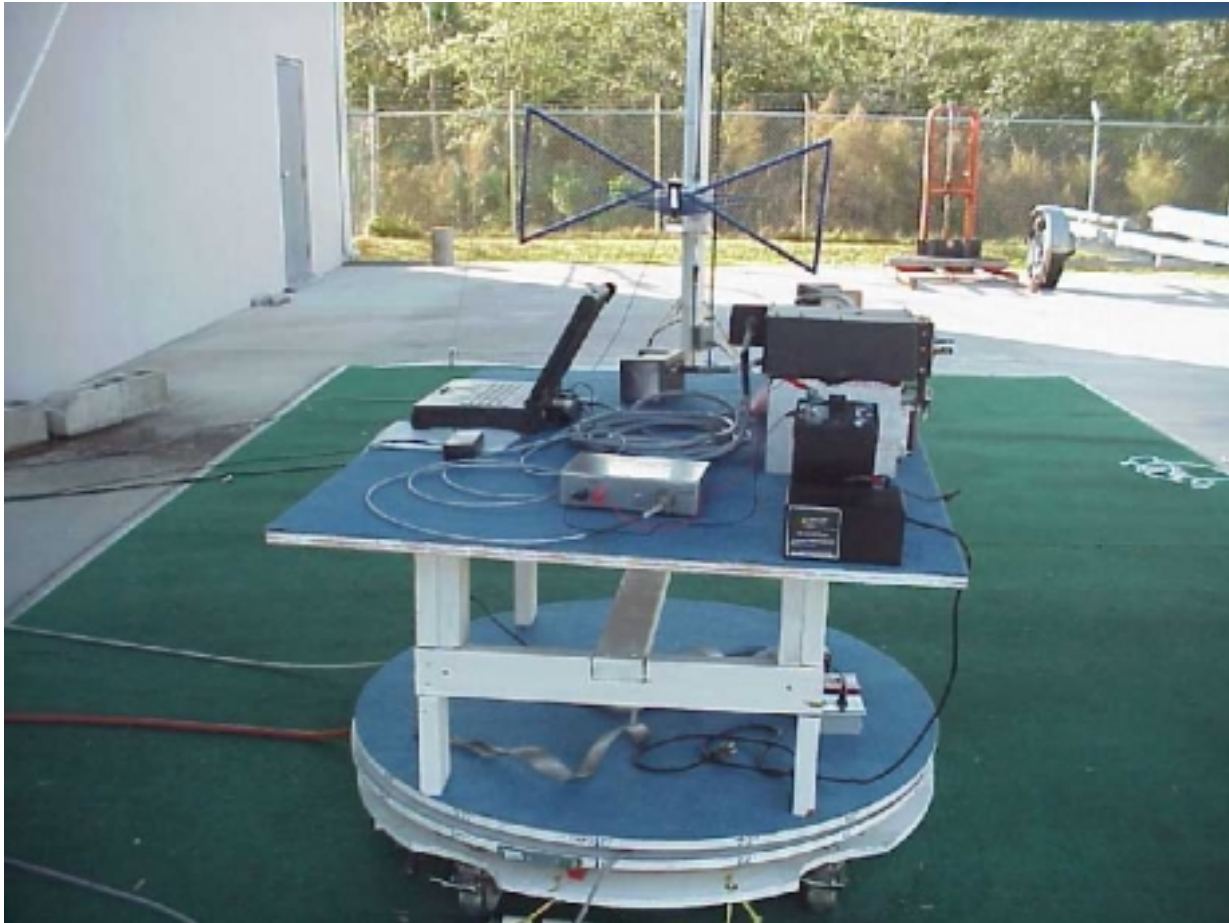


Photo H.4 Side view of CCU test setup at Rubicom Systems, Inc.



HARRIS

GE HARRIS
Railway Electronics

Document No. 5001365

16 April 1999

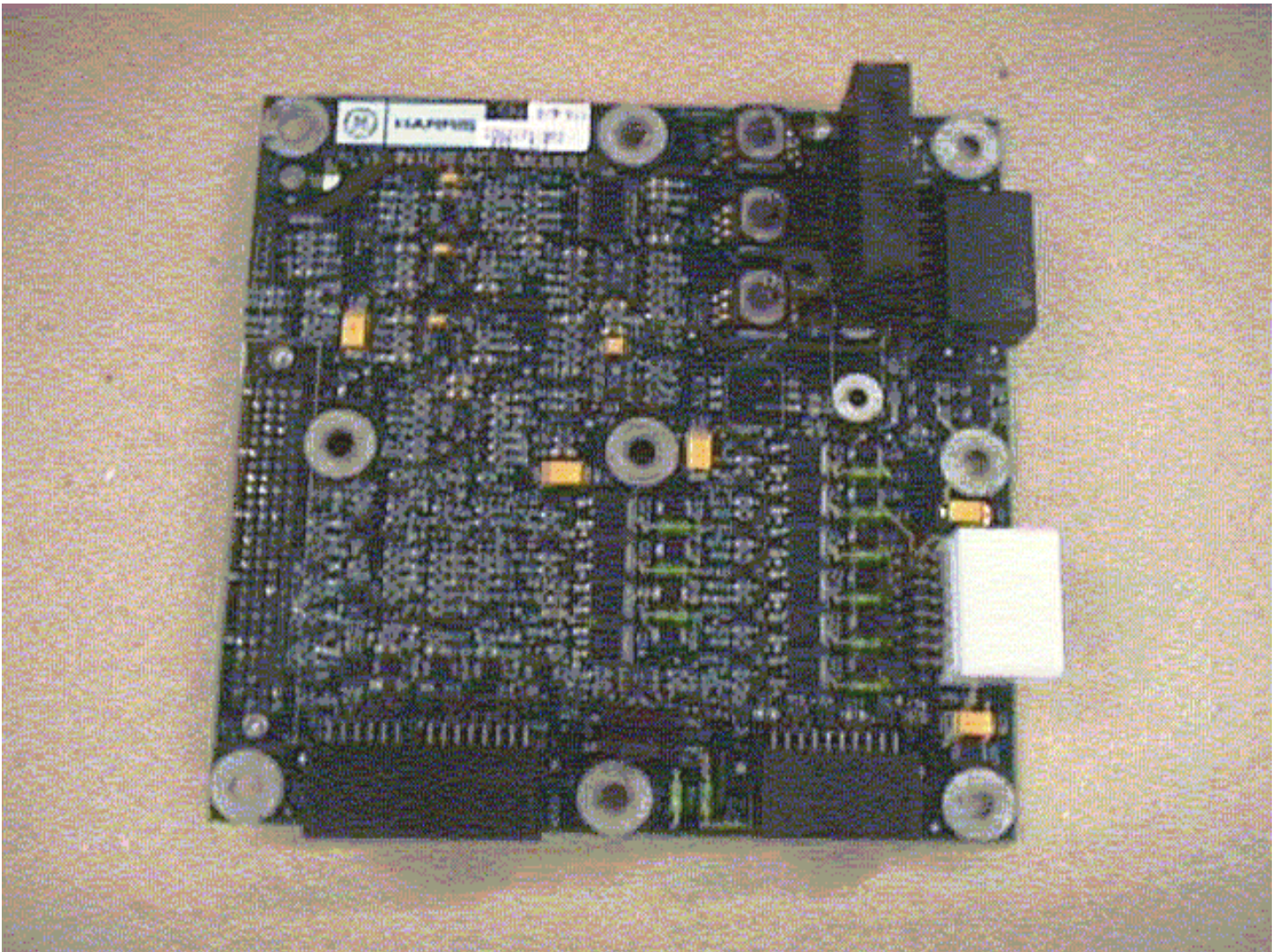


Photo H.5 Valve Interface Module board (top view)



HARRIS

GE HARRIS
Railway Electronics

Document No. 5001365

16 April 1999

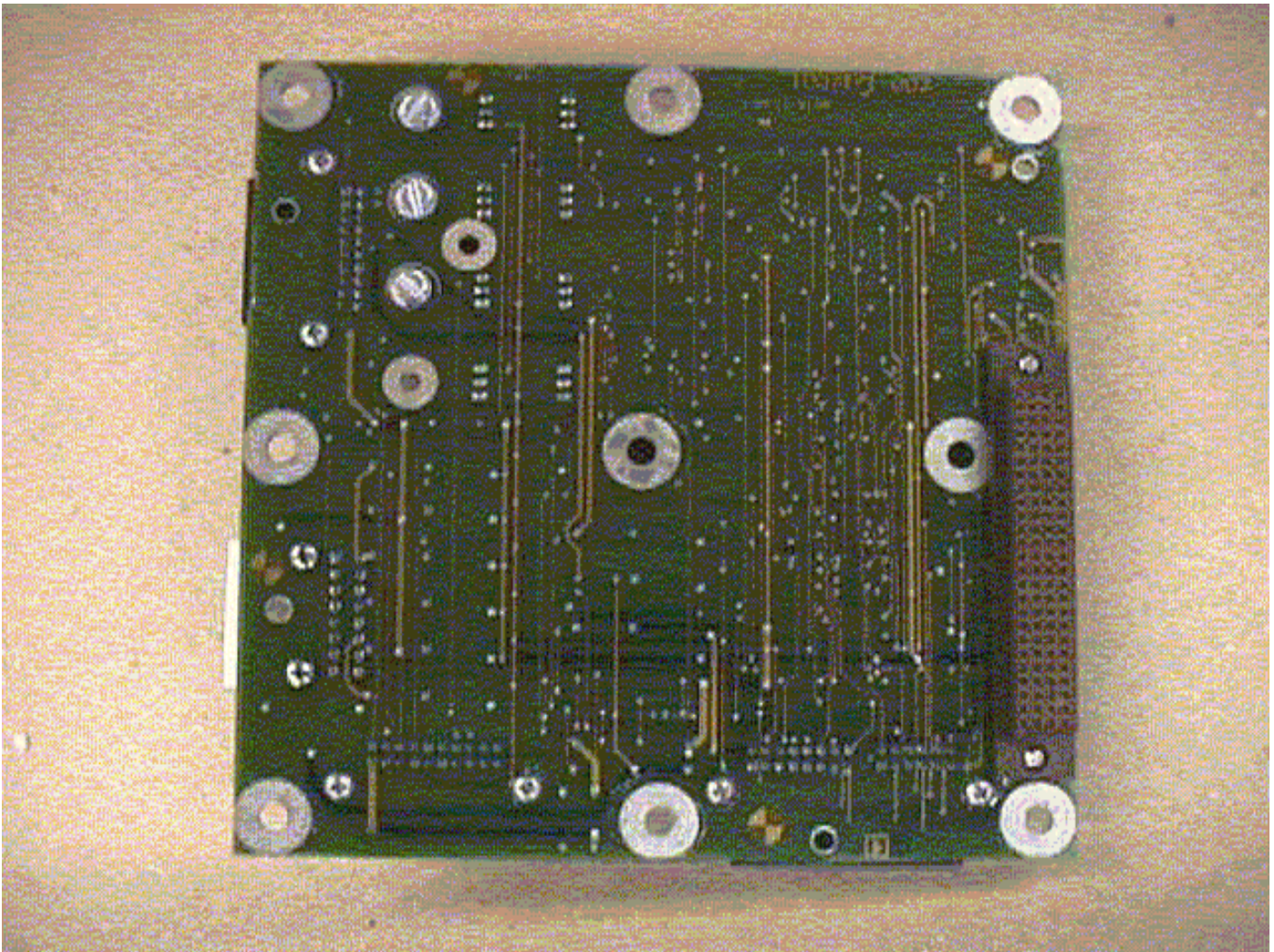


Photo H.6 Valve Interface Module board (bottom view)



HARRIS

GE HARRIS
Railway Electronics

Document No. 5001365

16 April 1999

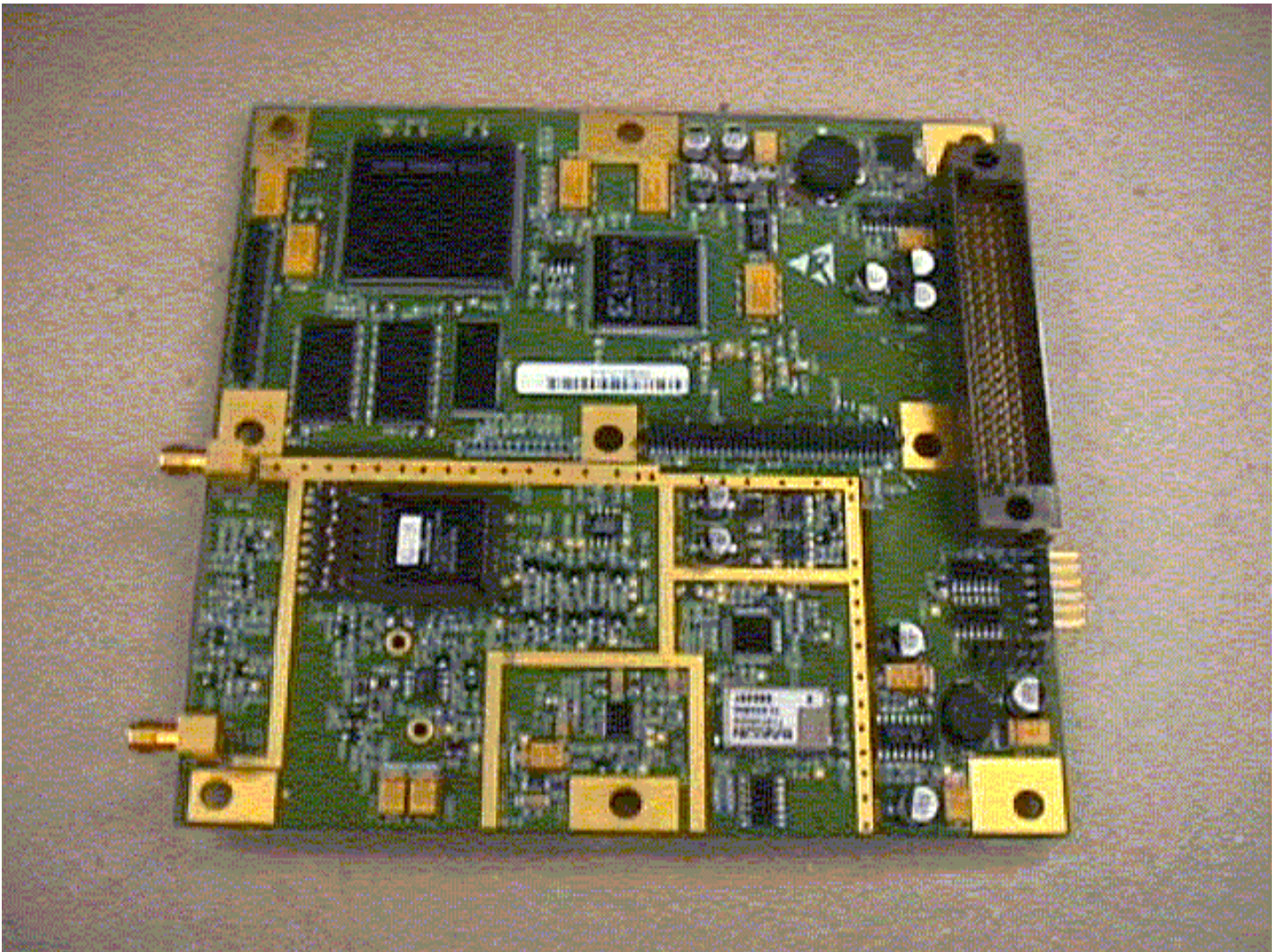


Photo H.7 ITCU Radio Board (top view)



HARRIS

GE HARRIS
Railway Electronics

Document No. 5001365

16 April 1999

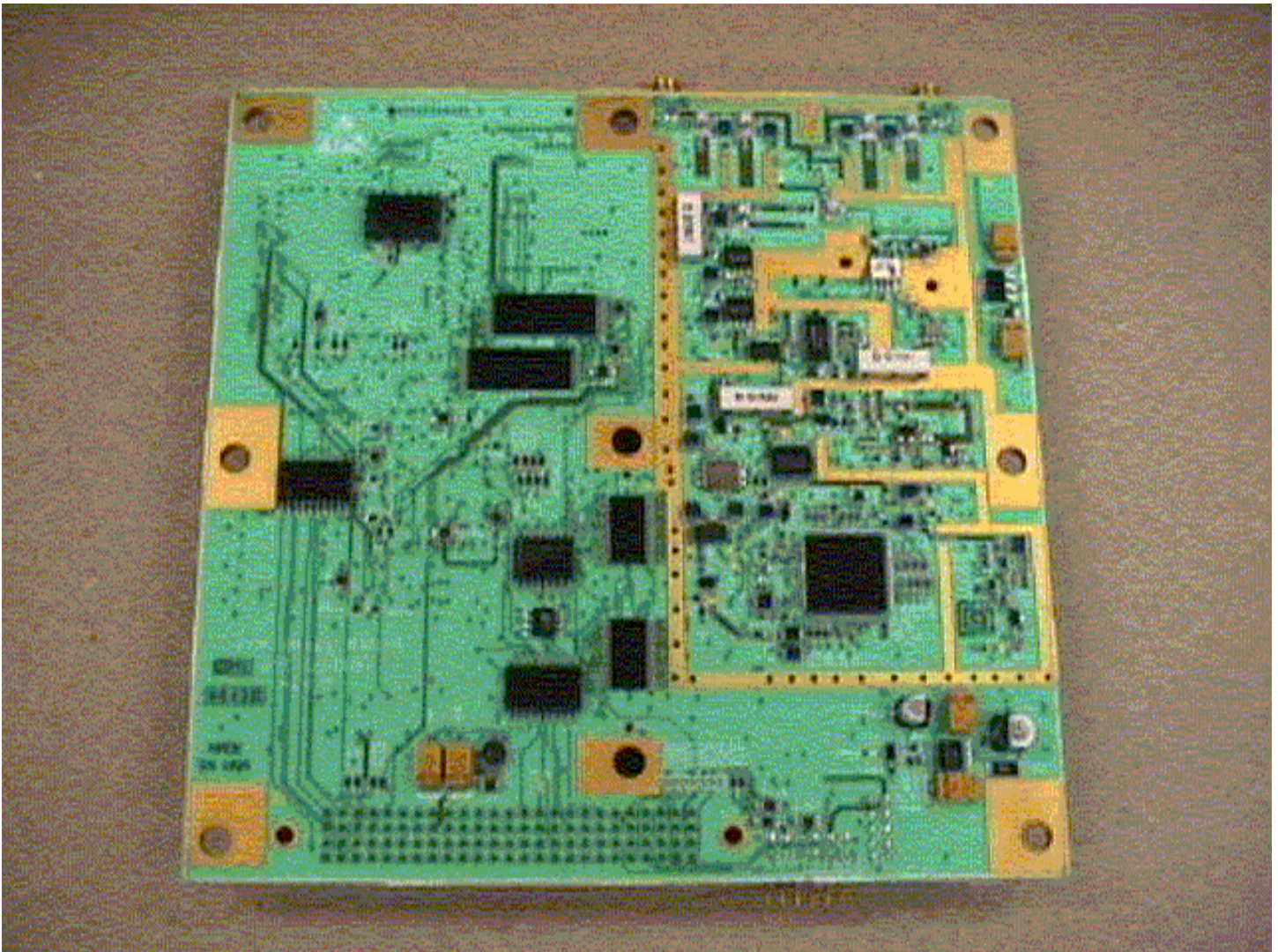


Photo H.8 ITCU Radio Board (bottom view)