

CONTENTS

Contents	1
Introduction	2
Product Overview	3
Front View	3
Back View	4
Remote Sensor (THR122NX)	5
Getting Started	6
Batteries	6
Table Stand or Wall Mount	6
Remote Sensor (THR122NX)	6
Setup Sensor	7
Data Transmission	8
Search for Sensor	8
Temperature	8
Select Temperature Unit	8
Minimum / Maximum Records	8
Temperature Trend	8
Reset System	9
Safety and Care	9
Warnings	9
Troubleshooting	9
Specifications	10

Main Unit Dimensions	10
Remote Sensor Dimensions	10
Temperature	10
Remote Sensor (THR122NX)	10
Power	10
FCC Statement	11
Declaration of Conformity	12

INTRODUCTION

Thank you for selecting the RadioShack Wireless Thermometer (MTR661). This device bundles precise temperature monitoring features into a single tool you can use from the convenience of your home.

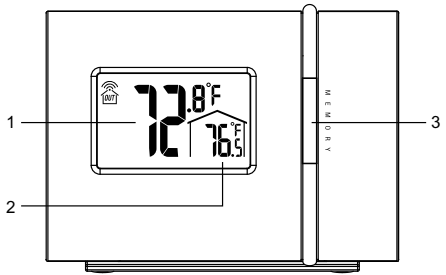
In this box, you will find:

- Main unit
- Remote sensor (THR122NX)

Keep this manual handy as you use your new product. It contains practical step-by-step instructions, as well as technical specifications and warnings you should know.

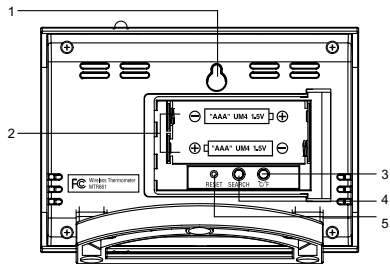
PRODUCT OVERVIEW

FRONT VIEW

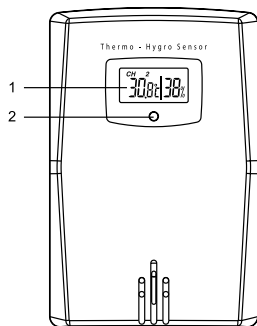


- 1. Outdoor Temperature Area
- 2. Indoor Temperature Area
- 3. **MEMORY:** view current, maximum and minimum temperature readings

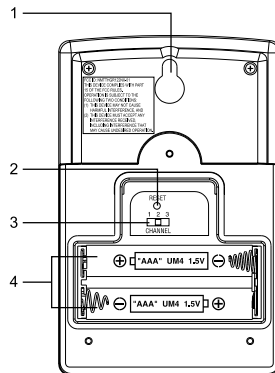
BACK VIEW



1. Wall mount
2. Battery compartment
3. RESET hole
4. SEARCH: Press to initiate signal sending between main unit and sensor
5. °C / °F switch



1. LCD display
2. LED status indicator



1. Wall mount hole
2. **RESET**
3. Channel number (1 - 3)
4. Battery compartment
(Battery compartment cover not shown)


GETTING STARTED

BATTERIES

Batteries are not supplied with this product. You will need to purchase 2 x UM-4 (AAA) 1.5V alkaline batteries for the main unit, and 2 x UM-4 (AAA) 1.5V alkaline batteries for the remote sensor.

Insert batteries before first use, matching the polarity as shown in the battery compartment. For best results, install batteries in the remote sensor before the main unit. Press **RESET** after each battery change.

NOTE Do not use rechargeable batteries.

 shows when batteries are low.


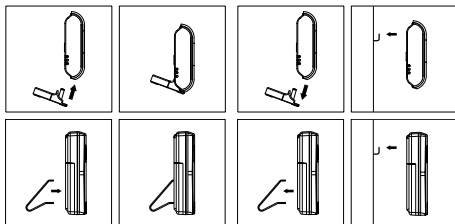
UNIT	 LOCATION
Main	Indoor Temperature / Area
Remote	Outdoor Temperature / Area

TABLE STAND OR WALL MOUNT

Use the stand on the back of the product, or mount it on a wall with a nail.



REMOTE SENSOR (THR122NX)

This product is shipped with a THR122NX Thermo Sensor that collects Temperature data. Data can be collected from only 1 sensor.

SETUP SENSOR

1. Open the remote sensor battery compartment with a small Phillips screwdriver.
2. Insert the batteries, matching the polarity as shown in the battery compartment.
3. Select any channel.
4. Place the sensor near the main unit. Press **RESET** on the sensor. Then, press and hold **SEARCH** on the main unit to initiate signal sending between the sensor and the main unit. The reception icon on the main unit will blink for approximately 3 minutes while it is searching for the sensor. (Refer to the Data Transmission section for more information.)
5. Close the remote sensor battery compartment.
6. Secure the sensor in the desired location using the wall mount or table stand.

For best results:

- Insert the batteries and select the channel before you mount the sensor.
- Place the sensor out of direct sunlight and moisture.
- Do not place the sensor more than 98 feet (30meters) from the main (indoor) unit.
- Position the sensor so that it faces the main (indoor) unit, minimizing obstructions such as doors, walls, and furniture.

- Place the sensor in a location with a clear view to the sky, away from metallic or electronic objects.
- Position the sensor close to the main unit during cold winter months as below-freezing temperatures may affect battery performance and signal transmission.

You may need to experiment with various locations to get the best results.




Standard Alkaline batteries contain significant amounts of water. Because of this they will freeze in low temperatures of approximately 10°F. Disposable Lithium batteries have a much lower threshold for temperature with an estimated freezing range of below -40°F. The Liquid Crystal Display in outdoor thermometers will remain operational to -20°F with adequate power.

Wireless ranges can be impacted by a variety of factors such as extremely cold temperatures. Extreme cold may temporarily reduce the effective range between the sensor and the base station.

If the unit's performance fails due to low temperature, the unit will resume proper functioning as the temperature rises to within the normal temperature range (i.e. no permanent damage will occur to the unit due to low temperatures).

DATA TRANSMISSION

Data is sent from the sensor every 80 seconds. The reception icon shown in the Outdoor Temperature Area shows the status.

ICON	DESCRIPTION
	Main unit is searching for sensor.
	A channel has been found.
	Channel 1 is selected
--- shows in Outdoor Temp Area	The selected sensor cannot be found. Search for the sensor or check batteries.

SEARCH FOR SENSOR

To search for a sensor, press and hold **SEARCH** for 2 seconds.

NOTE If the sensor is still not found, check the batteries, obstructions, and remote unit location.

NOTE Signals from household devices such as doorbells, electronic garage doors, and home security systems may cause temporary reception failure. This is normal and does not affect general product performance. The reception will resume once the interference ends.

TEMPERATURE

This product can display current, minimum, and maximum temperatures collected by the remote sensor and main (indoor) unit.

Outdoor data is collected and displayed every 80 seconds. Indoor data is collected and displayed every 10 seconds.

SELECT TEMPERATURE UNIT

Press the °C / °F switch into the desired location. The switch is located in the main unit battery compartment. The setting for the main unit overrides the remote sensor setting.

MINIMUM / MAXIMUM RECORDS

Press **MEMORY** to toggle between current, maximum (MAX) and minimum (MIN) records. To clear the records, press and hold **MEMORY** for 2 seconds. A beep will sound to confirm that the memory has been cleared.

RESET SYSTEM

The **RESET** button is located main unit battery compartment. Press **RESET** when you change the batteries and whenever performance is not behaving as expected (for example, unable to establish radio frequency link with remote sensor).

NOTE When you press **RESET**, all settings will return to default value, and you will lose all stored information.

SAFETY AND CARE

Clean the product with a slightly damp cloth and alcohol-free, mild detergent. Avoid dropping the product or placing it in a high-traffic location.

WARNINGS

This product is designed to give you years of service if handled properly. Observe the following guidelines:

- Never immerse the product in water. This can cause electrical shock and damage the product.
- Do not subject the main unit to extreme force, shock, or fluctuations in temperature or humidity.
- Do not tamper with the internal components.
- Do not mix new and old batteries or batteries of different types.

- Do not use rechargeable batteries with this product.
- Remove the batteries if storing this product for a long period of time.
- Do not scratch the LCD display.

Do not make any changes or modifications to this product. Unauthorized changes may void your right to use the product. The technical specification of this product and contents of this user guide are subject to change without notice. Images not drawn to scale.

TROUBLESHOOTING

Check here before contacting our customer service department.

Problem	Symptom	Remedy
Temp	Shows "LLL" or "HHH"	Temperature is out-of-range
Remote sensor	Cannot locate remote sensor	Check batteries
		Check location
Remote sensor	Data does not match main unit	Initiate a manual sensor search

SPECIFICATIONS

MAIN UNIT DIMENSIONS

L x W x H	4 x 0.8 x 3 inches (104 x 22 x 75 mm)
Weight	7.1 ounces (202 g) with battery

REMOTE SENSOR DIMENSIONS

L x W x H	3.6 x 2.4 x 0.79 inches (92 x 60 x 20 mm)
Weight	2.22 ounces (63 g) without battery

TEMPERATURE

Unit	°F or °C
Indoor Range	50 °C to -5 °C (122 °F to 23 °F)
Outdoor Range	-4 °F to 140 °F (-20 °C to 60 °C)
Resolution	0.2 °F (0.1 °C)

REMOTE SENSOR (THR122NX)

RF frequency	433 MHz
Range	98 feet (30 meters) with no obstructions
Transmission	Every 80 seconds
Channel No.	1

POWER

Main unit batteries	2 x UM-4 (AAA) 1.5V alkaline
Sensor batteries	2 x UM-4 (AAA) 1.5V alkaline

FCC STATEMENT

This device complies with Part 15 of the FCC Rules. Operation is subject to the following two conditions:
(1) This device may not cause harmful interference, and
(2) This device must accept any interference received, including interference that may cause undesired operation.

WARNING Changes or modifications to this unit not expressly approved by the party responsible for compliance could void the user's authority to operate the equipment.

NOTE This equipment has been tested and found to comply with the limits for a Class B digital device, pursuant to Part 15 of the FCC Rules. These limits are designed to provide reasonable protection against harmful interference in a residential installation.

This equipment generates, uses and can radiate radio frequency energy and, if not installed and used in accordance with the instructions, may cause harmful interference to radio communications. However, there is no guarantee that interference will not occur in a particular installation. If this equipment does cause harmful interference to radio or television reception, which can be determined by turning the equipment off and on, the user is encouraged to try to correct the interference by one or more of the following measures:

- Reorient or relocate the receiving antenna.
- Increase the separation between the equipment and receiver.
- Connect the equipment into an outlet on a circuit different from that to which the receiver is connected.
- Consult the dealer or an experienced radio/TV technician for help.

DECLARATION OF CONFORMITY

The following information is not to be used as contact for support or sales. Please call our customer service number (listed on our website at www.oregonscientific.com), or on the warranty card for this product) for all inquiries instead.

We

Name: Oregon Scientific, Inc.
Address: 19861 SW 95th Place, Tualatin,
Oregon 97062 USA
Telephone No.: 1-800-853-8883
Fax No.: 1-503-684-8883

declare that the product

Product No.: MRT661
Product Name: Wireless Thermometer
Manufacturer: IDT Technology Limited
Address: Block C, 9/F, Kaiser Estate, Phase 1,
41 Man Yue St., Hung Hom, Kowloon,
Hong Kong

is in conformity with Part 15 of the FCC Rules. Operation is subject to the following two conditions:

- 1) This device may not cause harmful interference.
- 2) This device must accept any interference received, including interference that may cause undesired operation.