

Before using your Emjoi® Spotless Beauty, read this instruction booklet thoroughly.

Thank you for your purchase of the Emjoi® Spotless Beauty a two-in-one product that will keep your skin smooth and clear. It removes unwanted hair from the root and damages the root with Radio Frequency Technology. It is a non-invasive alternative to electrolysis that leaves your skin smooth for weeks. Since you are damaging the root every time you remove hair, your hair may begin to grow back lighter as well as thinner. The hair remover includes two interchangeable heads. Use the tweezer attachment for removing single hairs or the coil tweezer to remove multiple hairs. Its skin clearing light attachment uses the same intensity light as the sun on a summer's day without the harmful infrared and ultraviolet rays to clear up blemishes and unsightly skin conditions.

To Use The Hair Remover Feature

1. Make sure that the area to be treated with the Emjoi® Spotless Beauty is clean, dry and free from oil or lotion. Tip: If you apply a warm compress to the area you wish to treat it will open the pores and hair follicles to make the hair easier to slide out.
2. Remove the Emjoi® Spotless Beauty handset from its case.
3. The Emjoi® Spotless Beauty comes with an interchangeable tweezer system.
The gold-plated tweezers are ideal for removing single hairs in areas that you want pinpoint precision, eyebrows and sensitive breast hair, while the coil tweezers are excellent for removing multiple hairs at one time, bikini line and facial hair on the sides of your face.
4. To change the tweezers: Remove the cap at the tip of the handset, where the tweezer is located, by using a slight bending motion (fig 1). Then press the small blue button, on the bottom of the handset, and at the same time gently pull out the tweezers (fig 2). Place the other tweezers into the handset until it clicks into place and replace the cap.
5. Since the Emjoi® Spotless Beauty uses Radio Frequencies to remove unwanted hair it may cause interference with other appliances that use Radio Frequencies, TV, radio, cordless phone, etc.
Therefore, make sure that these appliances are not in use where you are using your Emjoi® Spotless Beauty because they may interfere with its efficient operation. (You can have a microwave oven plugged in as long as you are not cooking something in your microwave oven. Your cordless phone can be plugged in as long as you are not using the phone).
6. Plug the Emjoi® Spotless Beauty into an electrical outlet. The green light above the "OFF" button will light up (fig 3).

7. To turn the Emjoi® Spotless Beauty ON, just select a setting, "HI", "MED" or "LO", and the red light above the selected setting will light up.
For coarse hair use "HI" and for fine hair select "LO". You can use "HI" to remove all types of hair but for people with sensitive skin we recommend to use the "LO" or "MED" setting.
Note: There is no harmful electricity emitted from the tweezers. When using the Emjoi® Spotless Beauty you will not feel anything being emitted from the tweezers.
8. If the hair you wish to treat is very long, trim the hair prior to treatment. Hair should not be longer than a 1/4th of an inch.
9. Clasp the unwanted hair between the tweezers by pressing the large blue button on the handle. The Radio Frequency Indicator, red light by the adapter plug, will get brighter (fig 4) this lets you know that the Radio Frequency technology is working.
10. For best results, grasp the hair as close to the skin as possible without touching the skin.
Important: Hold the tweezers closed on unwanted hair for 20-30 seconds
11. Gently slide the hair out in the direction of hair growth. If the hair does not slide out easily, some hairs are more stubborn than others, gently tweeze it out. If the hair breaks or does not slide out easily, the follicle may not be at the proper stage to be destroyed. Wait a few days and try again.
12. After you are finished removing hair with the Emjoi® Spotless Beauty, turn the unit OFF by pressing the "OFF" button and unplug it from the electrical outlet.
You can also turn it OFF by selecting the "LIGHT" button if you want to use the clear skin feature.

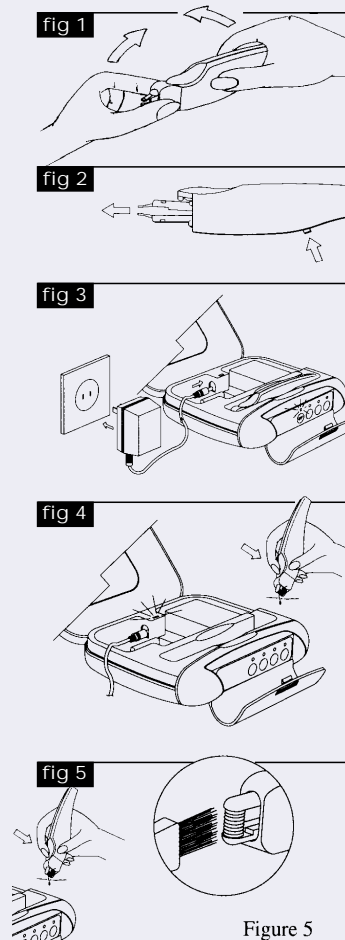


Figure 5

Cleaning:

After each session it is important to clean your Emjoi® Spotless Beauty. Make sure that your unit is turned OFF and you have unplugged it from the electrical outlet. To clean the coil-tweezers, use the brush provided (fig 5), to brush off any hairs. To clean the gold-plated tweezers, use rubbing alcohol on the tip of the tweezers with a cotton swab that has been squeezed dry. Note: Make sure that the cotton swab is not soaked with alcohol.

You **cannot** use the Hair Removal feature and the Clear Skin Light feature at the same time. You must use them separately.

To Use The Clear Skin Feature

1. Make sure that the area to be treated with the Emjoi® Spotless Beauty is clean, dry and free from oil or lotion.
2. Plug the Emjoi® Spotless Beauty into an electrical outlet. The green light above the "OFF" button will light up.
3. To turn the Emjoi® Spotless Beauty ON, press the "LIGHT" button and the red light above it will light up.
4. Hold the Clear Skin light applicator above the area to be treated, without touching the skin.
If the light applicator touches the skin turn the unit OFF by pressing the "OFF" button so you can clean the lens. Put rubbing alcohol on a cotton swab that has been squeezed dry and rub it on the lens. After cleaning the lens turn the unit ON by pressing the "LIGHT" button.
5. Hold the Clear Skin light applicator over the treatment area for 3-4 minutes.
6. Repeat step 1-5 three or four times a day as needed.
7. After you are finished using the Clear Skin light attachment, turn the unit OFF by pressing the "OFF" button. You can also turn it OFF by selecting a hair removal setting "HI", "MED", or "LO" if you want to use the hair removal feature.

Caution:

1. Do not look directly into the light source.
2. Keep eyes protected during facial treatments.
3. People who are sensitive to the sun as well as anyone taking medication that causes sun sensitivity should not use the Clear Skin light attachment.
4. The Clear Skin light attachment should only be used as directed and is not a substitute for professional skin care.
5. If you suffer from any medical condition, consult with your health care provider before using this, or any other, personal care appliance.

Warning: Changes or modifications to this unit not expressly approved by the party responsible for compliance could void the user's authority to operate the equipment.

NOTE: This equipment has been tested and found to comply with the limits for a Class B

ISM equipment, pursuant to Part 18 of the FCC Rules. These limits are designed to provide reasonable protection against harmful interference in a residential installation. This equipment generates, uses, and can radiate radio frequency energy and, if not installed and used in accordance with the instructions, may cause harmful interference to

radio communications. However, there is no guarantee that interference will not occur in a particular installation. If this equipment does cause harmful interference to radio or

television reception, which can be determined by turning the equipment off and on, the user is encouraged to try to correct the interference by one or more of the following measures:

- Reorient or relocate the receiving antenna.**
- Increase the separation between the equipment and receiver.**
- Connect the equipment into an outlet on a circuit different from that to which the receiver is connected.**
- Consult the dealer or an experienced radio TV technician for help.**