

REV	ECO NO.	DATE
0	Release	22-Oct-2013

Notes:

1. Material to be 0.003 to 0.005 in thick metalized polyester film (Brady B-486) or an Emerson approved equivalent.
2. Label material combined with printing process must be a CSA approved combination.
3. Rear surface adhesive must be a low energy, pressure sensitive type.
- 4 Color to be Black graphics on Silver background with Matte finish.

Serial Number Legend

B2140YYZZZZ

2140 = Base Model Number

Y = Year Code, Last 2 Digits of Current Year

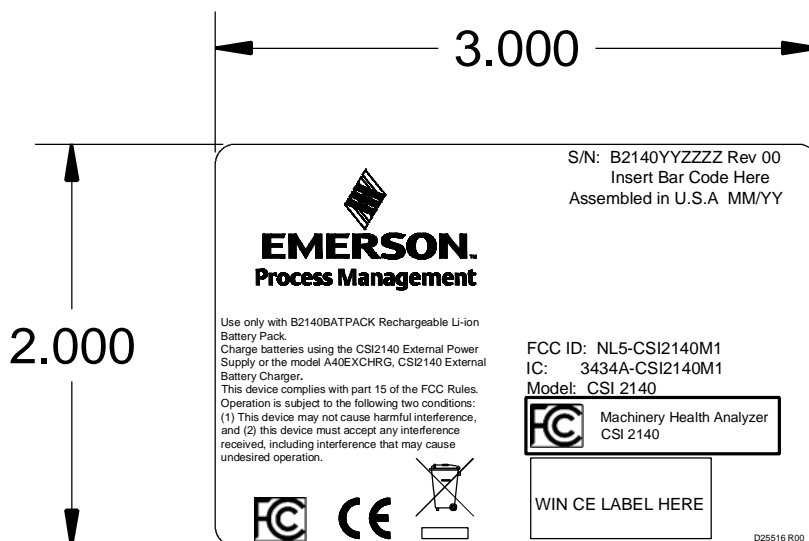
ZZZZ = Sequentially generated number, reset to "0001" at the beginning of each calendar year.


Date Code Legend

MM / YY

M = 2 digit month code, 01 - 12

Y = Year code, last 2 digits of the current year



MATERIAL:	UNLESS OTHERWISE SPECIFIED		FOR REFERENCE ONLY		<div> Computational Systems Incorporated Knoxville, TN.</div>					
	DIMENSIONS ARE IN INCHES									
FINISH:	TOLERANCES		DESIGNED BY: D. Beeler	DATE 23-Feb-2013	<div>TITLE</div> <div>2140 Base Main RF Label</div>					
			DRAWN BY: D. Beeler	DATE 23-Feb-2013						
			LAST REVISED BY: D. Beeler	DATE 22-Oct-2013						
			RESP. ENGINEER D. Beeler	DATE						
			MANUFACTURING ENG. W.Hardin	DATE						
ARTWORK FILENAME/REVISION LEVEL:			DOCUMENT CONTROL	DATE	CAD FILENAME D25516.dwg		DRAWING NO./PART NO.		SCALE	SIZE
					FIRST USED MODEL NO. 2140		D25516		SHEET 1 OF 1	A
	DO NOT SCALE THIS DRAWING									