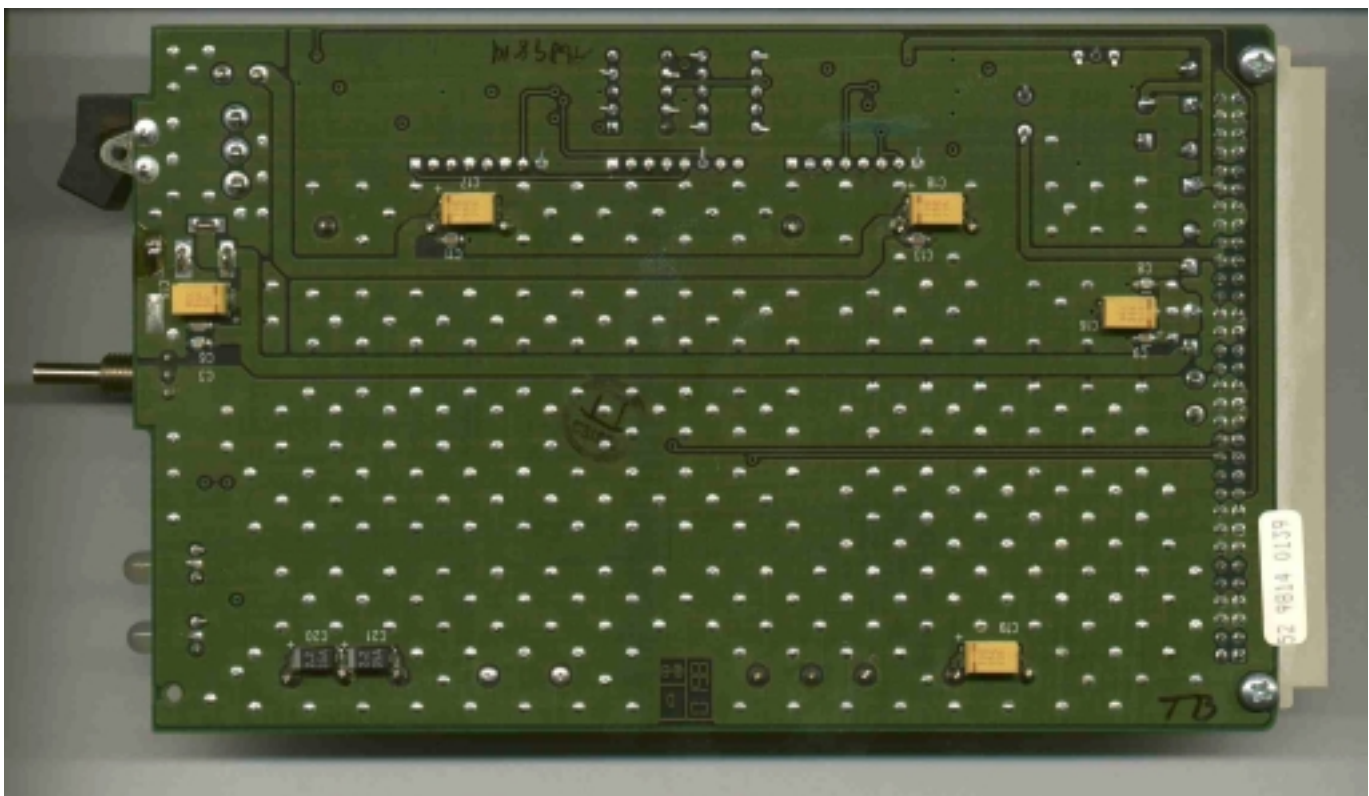


Internal Photos of EUT

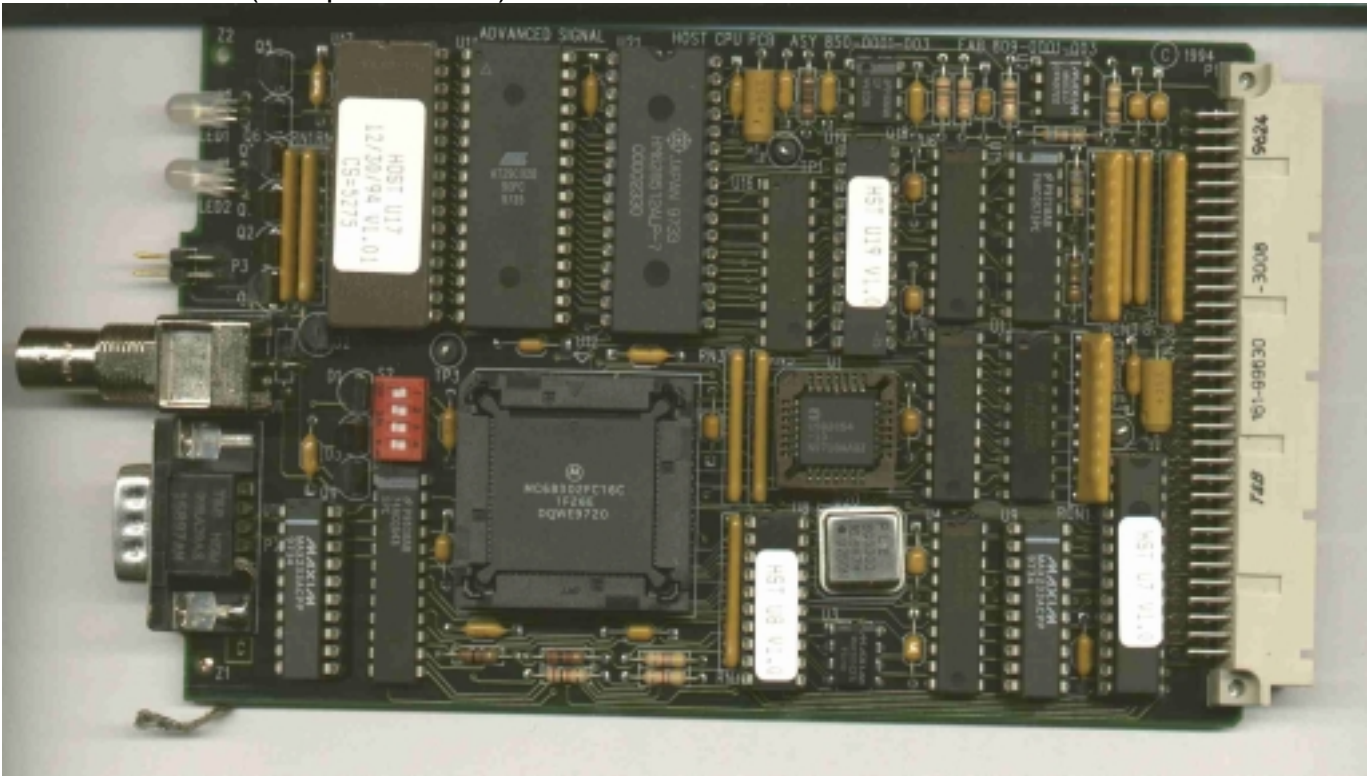
DC - DC Converter Board (Component Side)



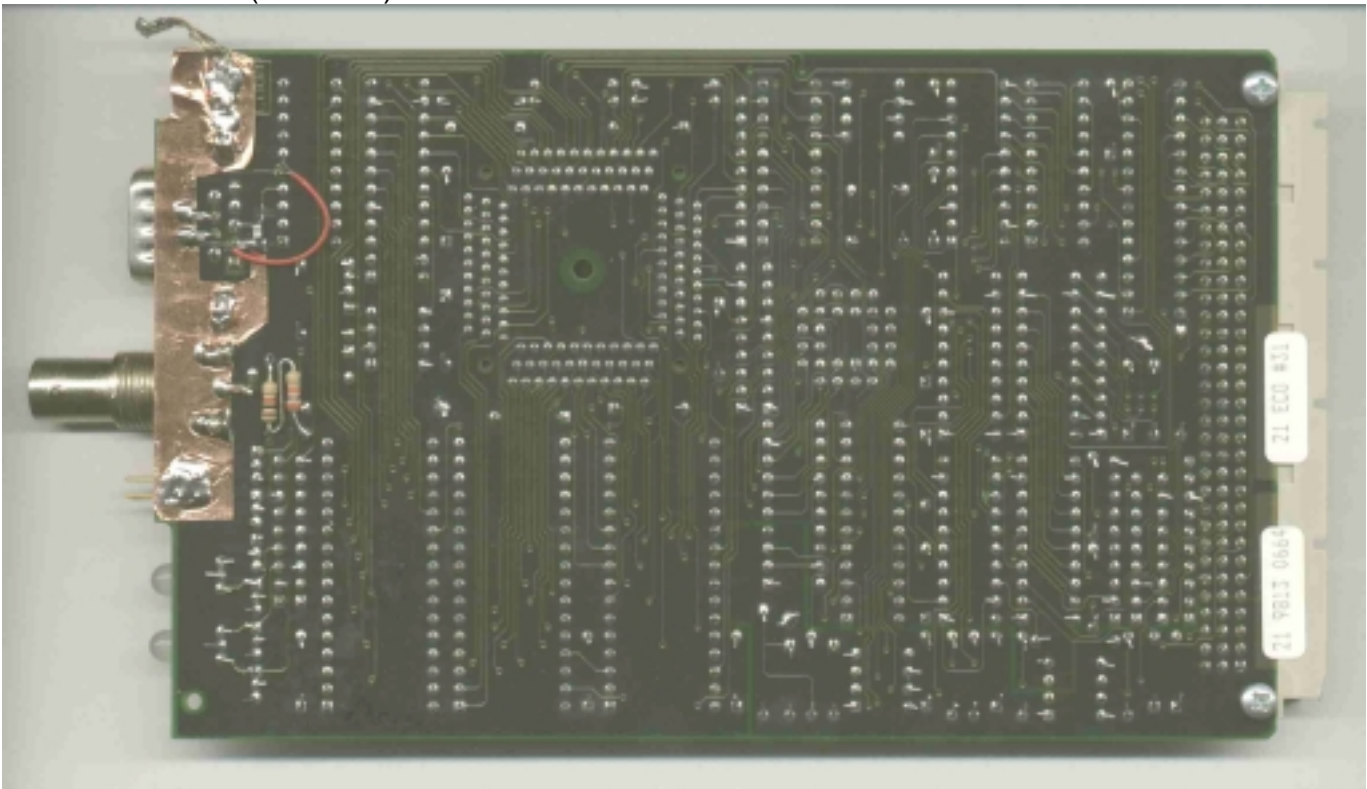
DC - DC Converter Board (Foil Side)



Host CPU Board (Component Side)



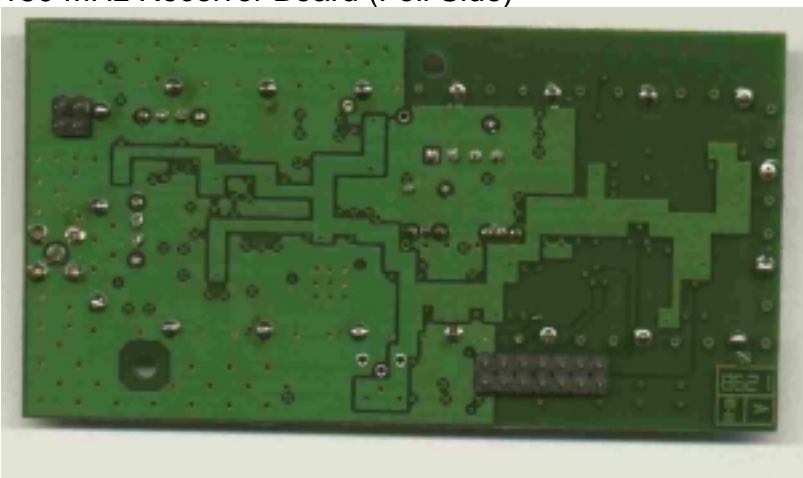
Host CPU Board (Foil Side)



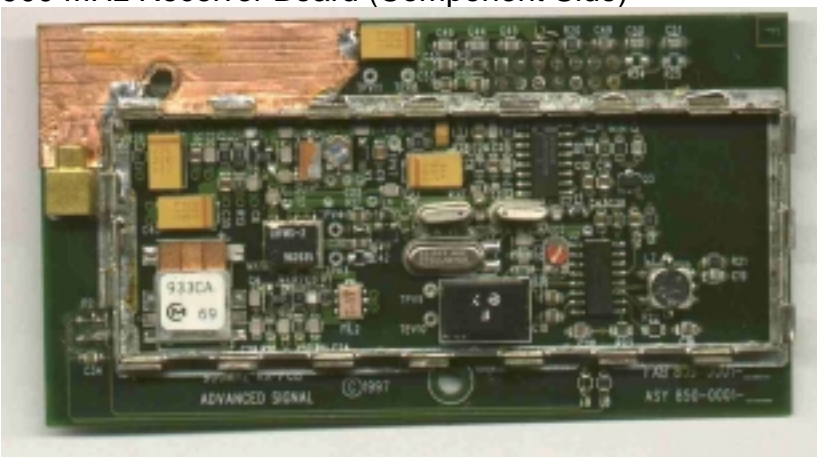
150 MHz Receiver Board (Component Side)



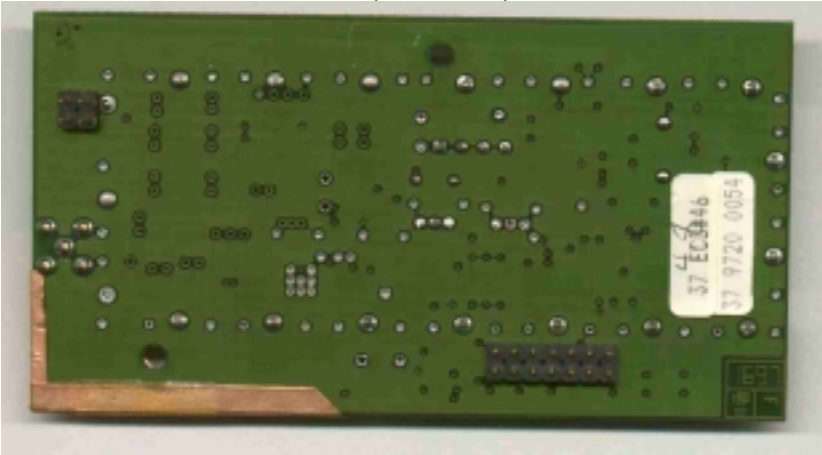
150 MHz Receiver Board (Foil Side)



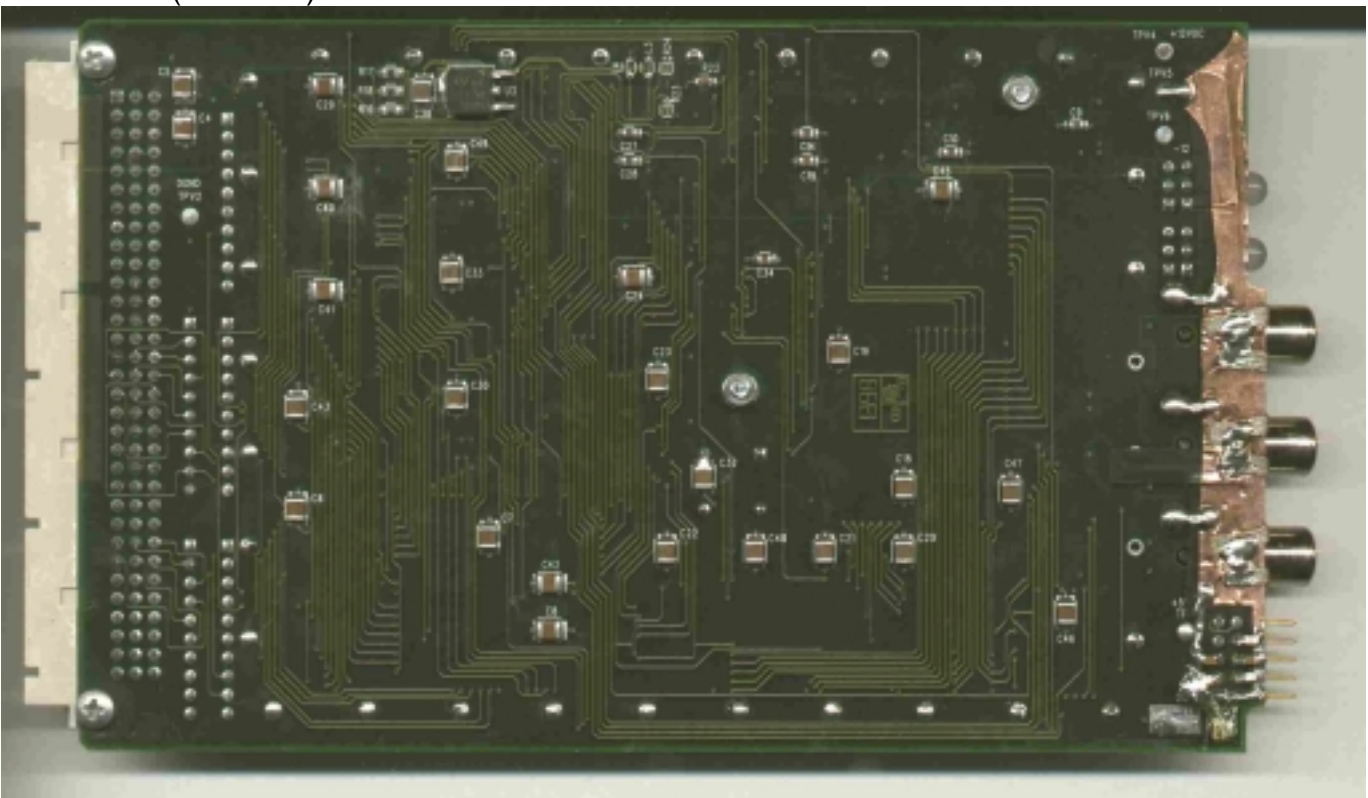
900 MHz Receiver Board (Component Side)



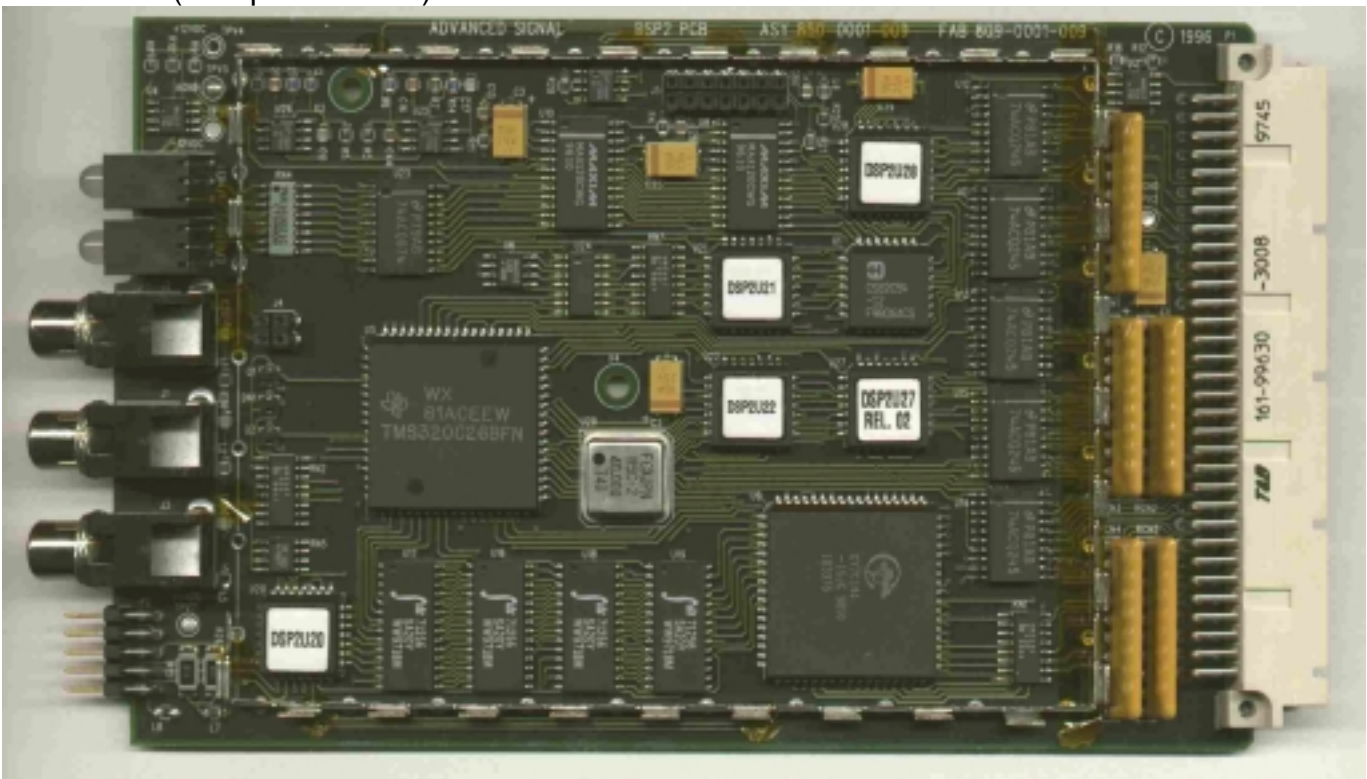
900 MHz Receiver Board (Foil Side)



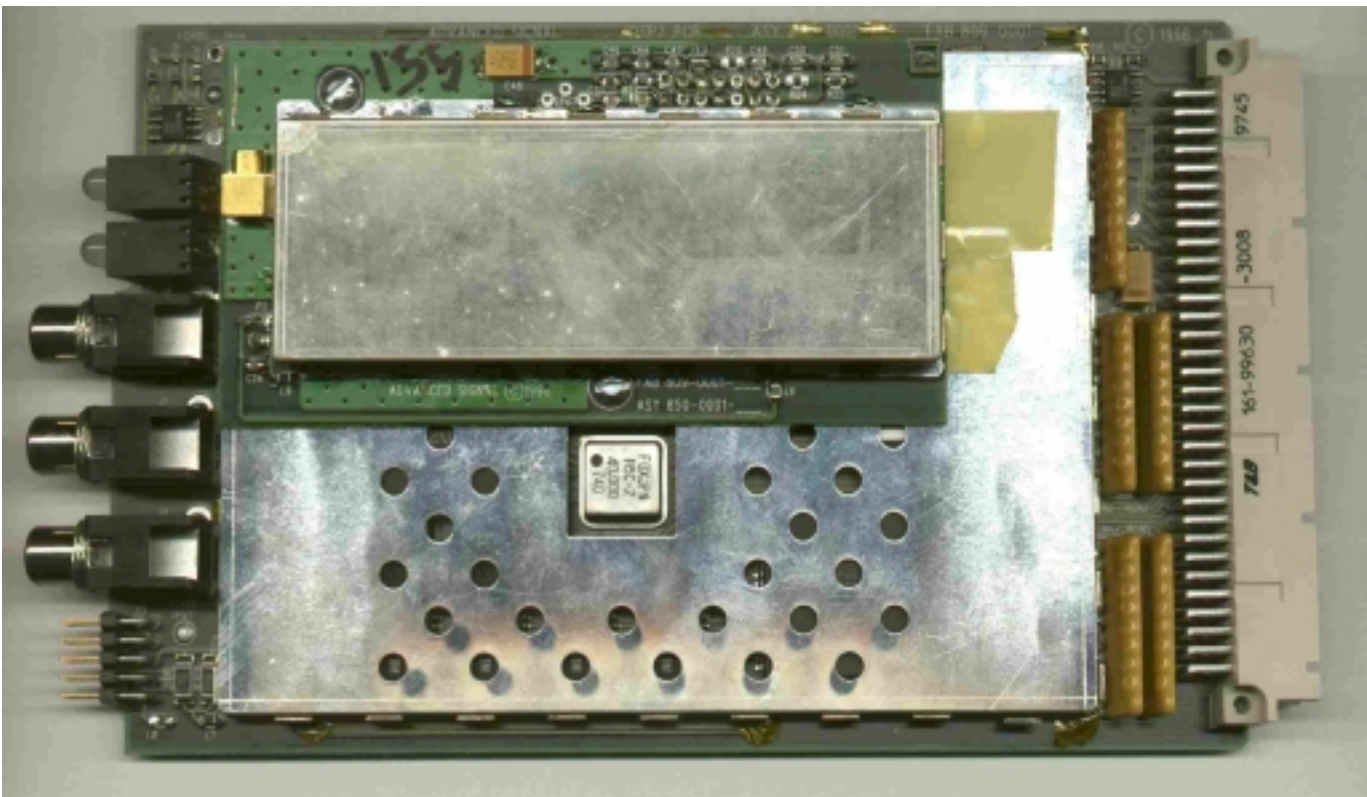
DSP Board (Foil Side)



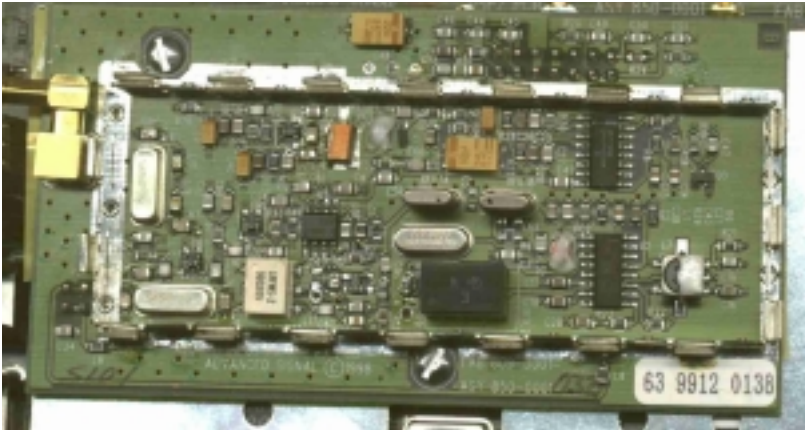
DSP Board (Component Side)



DSP Board Assembled



450 MHz Receiver Bd Component side



450 MHz Receiver Bd Foil side

