

SurfReady™ NTV-2000 - QUICK INSTRUCTION

FCC WARNING

This equipment has been tested and found to comply with the limits for a class B digital device pursuant to part 15 of FCC Rules. These limits are designed to provide reasonable protection against harmful interference in a residential installation. This equipment generates, uses, and can radiate radio frequency energy and, if not installed and used in accordance with the instructions, may cause harmful interference to radio communications. However, there is no guarantee that interference will not occur in a particular installation. If this equipment does cause interference to radio or television reception, which can be determined by turning the equipment off and on, the user is encouraged to try to correct the interference by one or more of the following measures:

- Reorient or relocate the receiving antenna.
- Increase the separation between the equipment and receiver.
- Connect the equipment into an outlet on a circuit different from that to which the receiver is connected.
- Consult the dealer or an experienced radio/TV technician for help and for additional suggestions.

The user may find the following booklet prepared by the Federal Communications Commission helpful: "How to Identify and Resolve Radio-TV Interference Problems." This booklet is available from the U.S. Government Printing Office, Washington, D.C. 20402, Stock No. 004-000-00345-4.

The user is cautioned that changes or modifications not expressly approved by the manufacturer could void the user's authority to operate the equipment.

NOTE: In order for an installation of this product to maintain compliance with the limits for a Class B device, shielded cables must be used.

UNIT SPECIFICATIONS

Dimensions	380mm X 65mm X 245mm	Power Requirements	120 V AC
Weight	1.5 kg	Power Consumption	35 W max

CAUTION

To prevent fire or shock hazard, do not expose SurfReady™ to rain or moisture.



CAUTION: To reduce the risk of Electric Shock,
Do not remove Cover (or back).
No User-Serviceable parts inside.
Refer Servicing to Qualified Service Personnel.



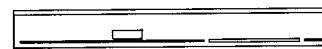
This symbol is intended to alert the user to the presence of uninsulated "dangerous voltage" within the product's enclosure that may be of sufficient magnitude to constitute a risk of electric shock to persons.



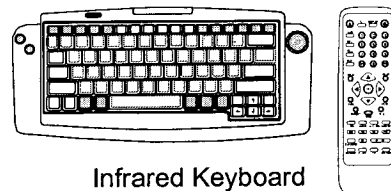
This symbol is intended to alert the user to the presence of important operating and maintenance (servicing) instructions in the literature accompanying the appliance.

COMPONENTS

Your SurfReady™ comes with the following components:



SurfReady™ unit



Infrared Keyboard
& Remote Control



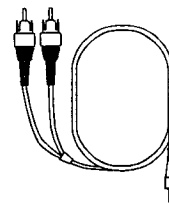
Microphone



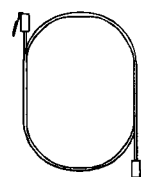
RCA Cable



S-Video Cable



Audio Cable



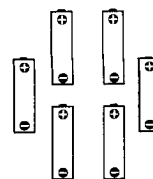
Telephone
Cable



Power
Cable



T-splitter



6 AAA
Batteries

SURFREADY PORTS

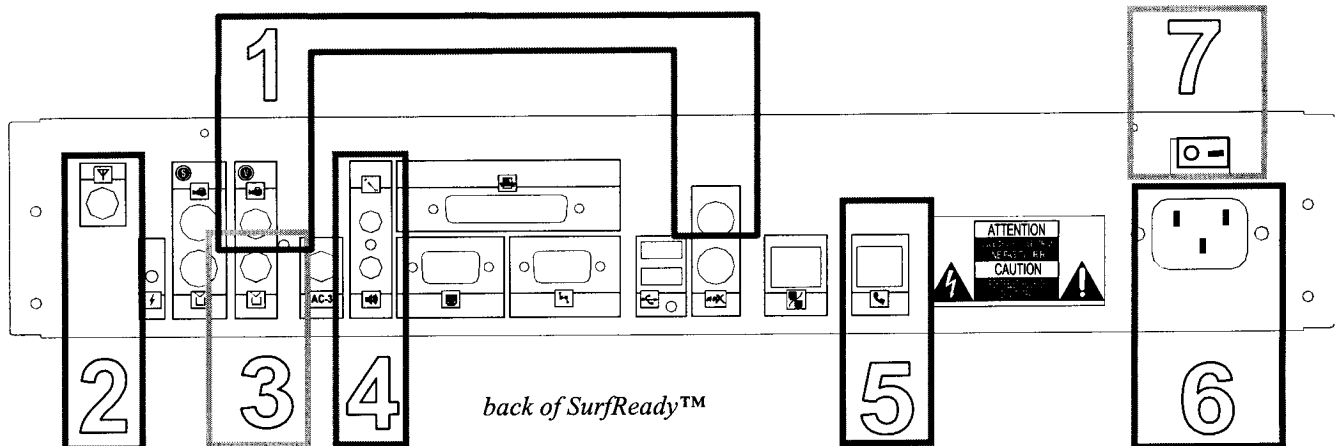
S-Video In
S-Video Out
Composite Video In (2)
Composite Video Out
Smart Card

AC-3 Audio Out
Mini-Audio Out
Mini-Audio In (2)
Parallel Port

VGA port
Serial Port
Tuner
USB port (2)

Auxiliary Port (2) - PS2 type
10 base-T Ethernet port
Telephone Jack
Power Jack

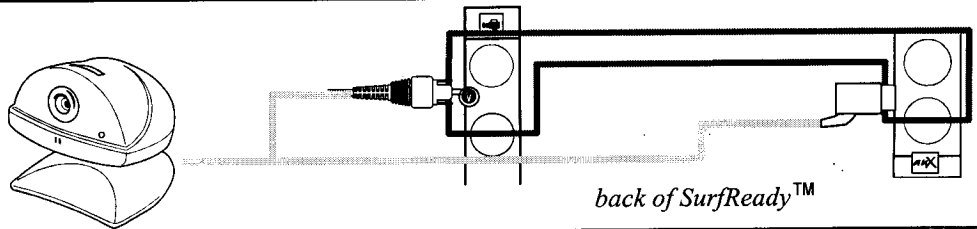
CONNECTION INSTRUCTIONS



This is a quick 6 step process for fast connection of your SurfReady™ NTV-2000 unit.

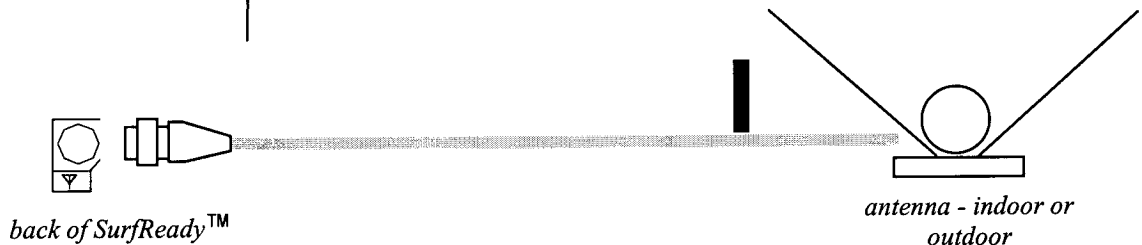
1

Connect the Digital-Cam to SurfReady™.



2

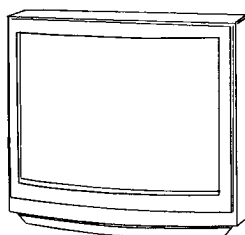
Connect SurfReady™ to the Antenna



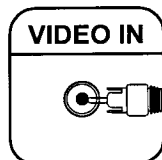
3

Connect SurfReady™ to the television set.

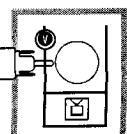
Note: This figure shows the Composite Video Connection that is on common TV sets. An S-Video Connection will result in higher picture quality.



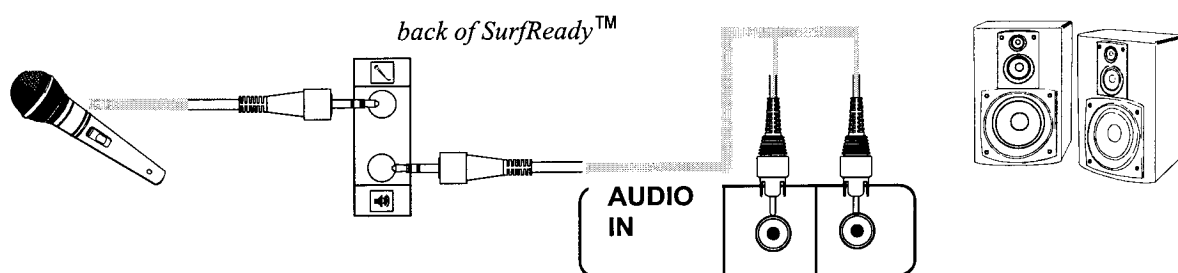
back of TV set



back of SurfReady™

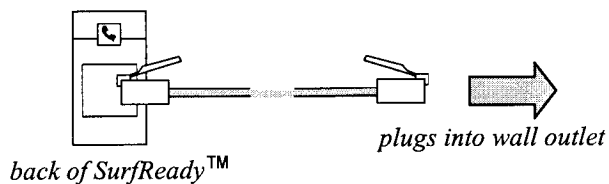


- 4** Connect the Microphone and speakers.

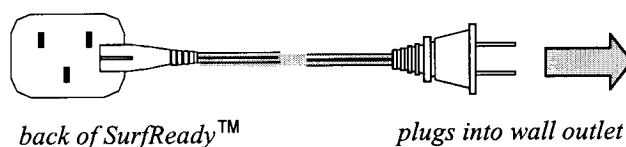


Depending on your existing Home entertainment system, you may connect the audio cable to the back of your TV set, VCR, or to a stereo receiver.

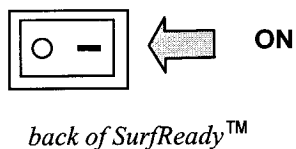
- 5** Connect SurfReady™ to the Telephone outlet.



- 6** Connect SurfReady™ to the Power outlet.



- 7** Once all parts have been connected, turn on SurfReady™ from switch in rear.



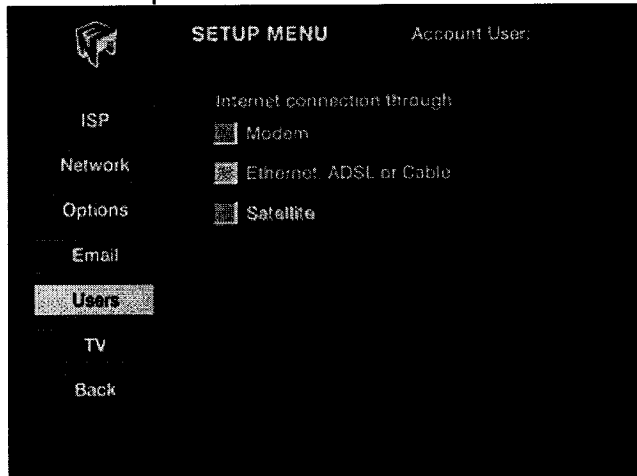
Instruction of Neon SurfReady™

HOW TO START

Have to execute the following two steps for installation:

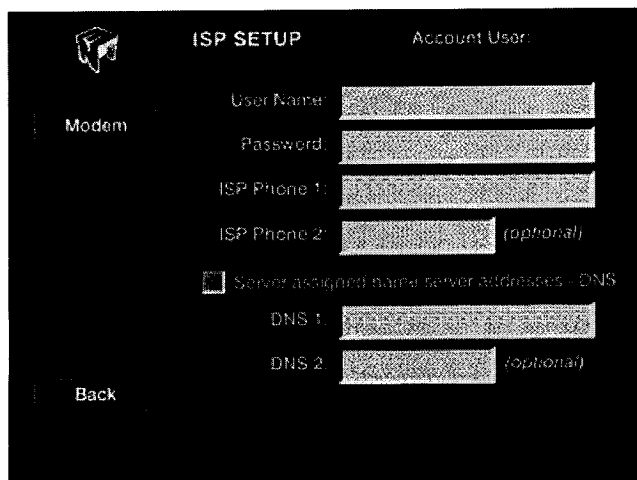
1. To connect the all cables with Neon SurfReady™. Please refer SurfReady™ – Quick Connection Guide.
2. To press power key and turn on Neon SurfReady™.

Main Setup Screen



Welcome to the main setup screen! From here you will be able to setup everything necessary for your box to function properly.

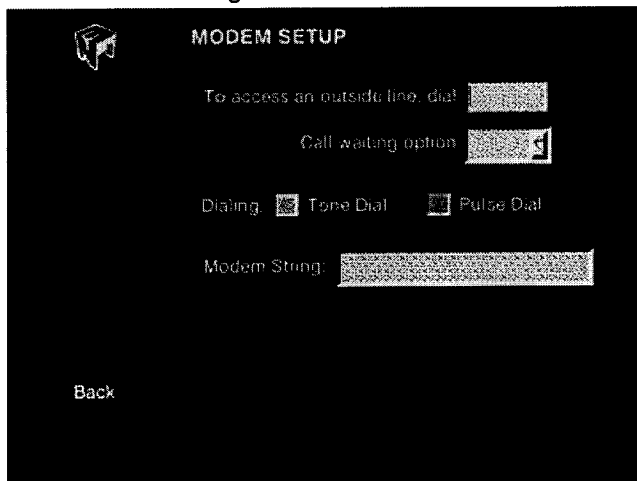
- First, specify your connection to the internet by selecting either modem, Network (Ethernet, ADSL and Cable), or Satellite.
- To setup all the information for your ISP (Internet Service Provider) select ISP from the menu and follow the instructions in the ISP setup guide.




ISP Setup

Here you can change the settings for your Internet Service Provider (ISP). A word of caution - Changing these settings can affect the functionality of your SurfReady unit and you may not be able to connect to the Internet. Before you proceed, make sure that you have all of the information on this screen from your ISP, and make sure that you don't enter all of the information with CAPS LOCK on.

1. Enter your User name for your ISP account in the User Name field.
2. Enter your Password for your ISP account in the password field.
3. Enter the ISP phone # in the ISP Phone 1 field. If you have an alternate backup phone # enter it into the ISP Phone 2 field. If you don't have an alternate phone # you may leave this field blank.
4. Enter your DNS addresses or simply select the Server assigned name server addresses-DNS to have one automatically assigned when you connect.
5. If you are using an external modem to connect select Modem to enter the modem setup menu.
6. Fill in the number needed to dial an outside line if needed.
7. If you have call waiting select the proper option for your call waiting or select no if you do not have call waiting.



 **MODEM SETUP**

To access an outside line, dial

Call waiting option

Dialing: ☒ Tone Dial ☐ Pulse Dial

Modem String:

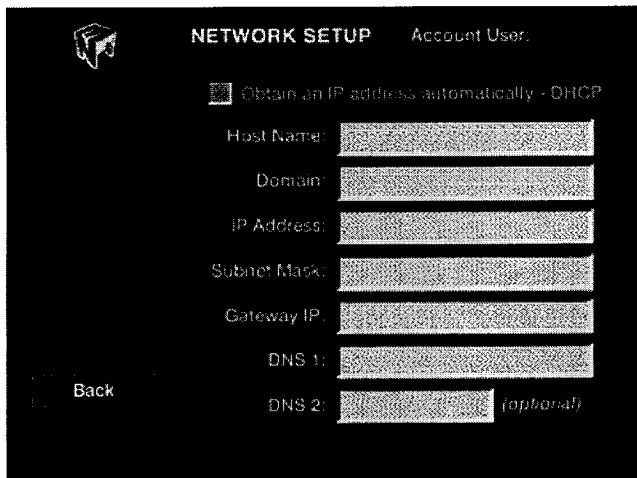
Back

8. Select either tone or pulse dial depending on whichever your modem uses.
9. Enter your modem string if you know it. This can be obtained from your modem manufacturer.
10. When done with the modem setup select back
11. Select back in the ISP setup screen to return to the main setup screen when completely done.

- To setup your network options select Network from the menu and follow the steps in the Network setup guide.

Network setup

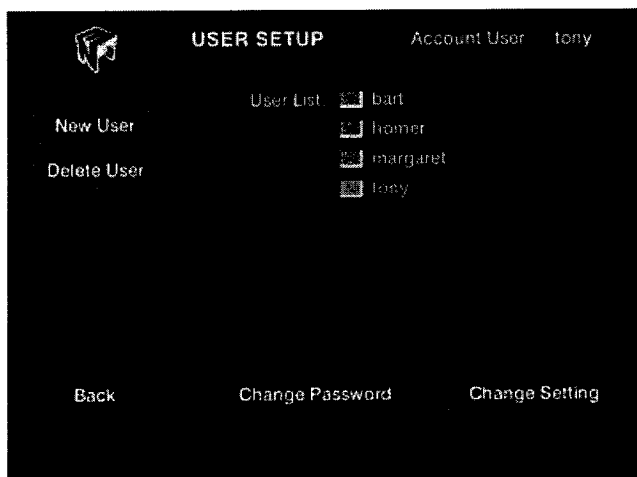
The following screen is for advanced users who have a home network. If you are dialing through regular telephone lines, you don't need to concern yourself with this screen



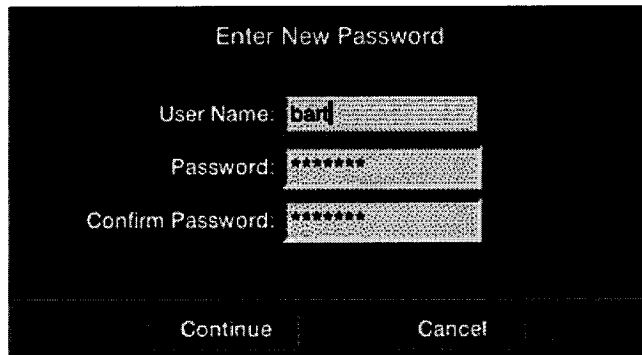
- To setup a new user select Users from the menu and follow the steps in the User setup guide.

New User Setup

The User Setup will allow you to configure the unit so each member of the household can control their own account.



1. To create a new user select New User to reach the screen shown below.
2. Enter in your desired username into the Username field.
3. Enter your desired password into the Password field.
4. Re-enter the same password into the Confirm Password field.
5. Select Continue to create the user account or Cancel to exit without creating a new user.

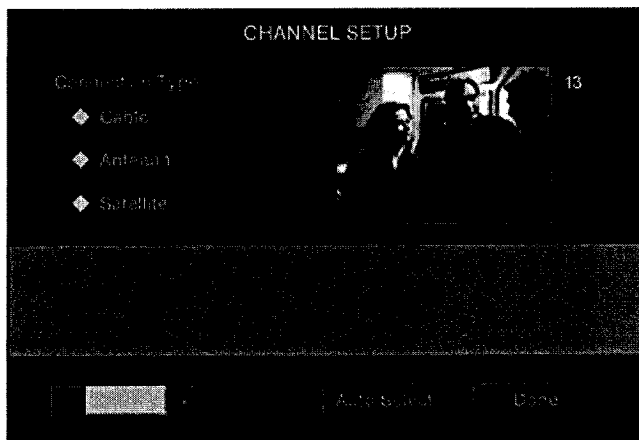


- When done with setup select Back to return to the main menu screen.

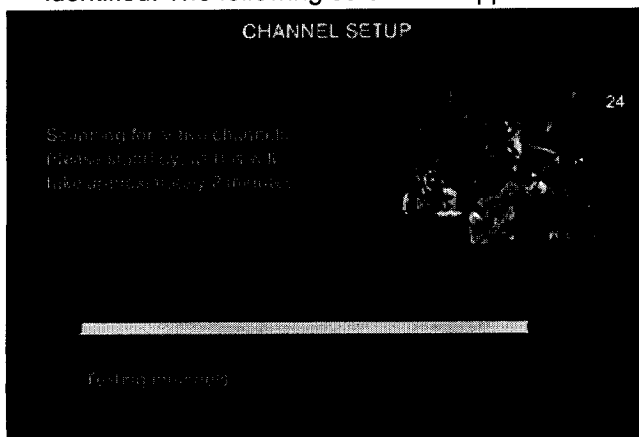
HOW TO SETUP TV – Channel Setup

- To set up TV channels:

1. Select the SETUP button from the TV Home menu. This screen should appear:



2. Select the correct connection type on the CHANNEL SETUP menu.
3. Choose the available channels from your connection below or use the Auto Select option.
4. If you chose the Auto Select option, please wait a few minutes as the active channels are identified. The following screen will appear.



5. When the channels have been selected, press Done.

The television option on your SurfReady set-top box is now ready for use.

- **Browsing and Watching TV**

You can enjoy the TV feature of the SurfReady set-top box even while you are browsing on the Web. This can be done simply by entering the WEB mode and using the TV button on your remote keyboard. A small TV window will appear on the screen. You can still change channels with the CH- and CH+ buttons, however you cannot change the television to full screen mode. If you want to watch television on the entire screen, you must exit the web browser.

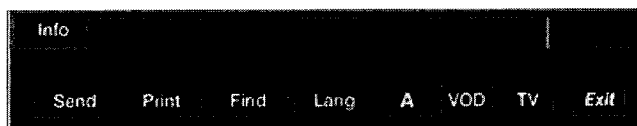
How To Connect To Internet

1. Turn on your TV/VCR.
2. Turn on the SurfReady.
3. On this page you will see three options: Web, E-mail and Setup. Choose Web. This will connect you to the Internet.



Note: If you are having problems connecting to the Internet, make sure that the ISP configuration information you entered in the previous section is correct. Call your ISP to make sure the information your ISP gave you is correct.

Under Web, you will find functions that are related to browsing the Web on the Internet. These functions can also be found on your keyboard.



Function Descriptions

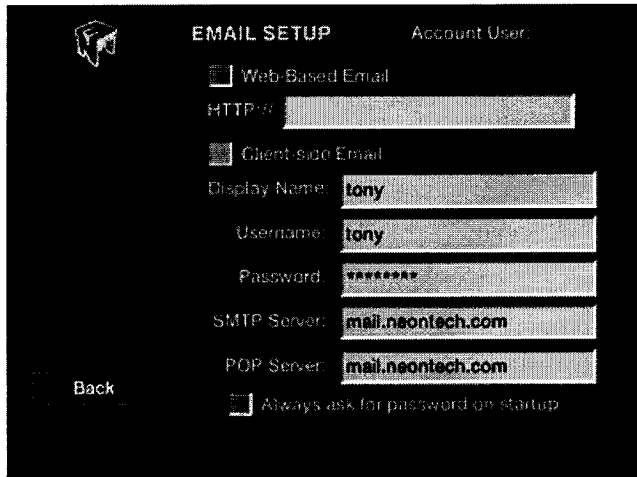
1. Send: Send the current Web page address to a friend through Email.
2. Print: Print out the Web page through your Printer.
3. Find: Locate a specified term on the current Web page.
4. Lang: Change your language encoding settings.
5. A: Changes between 3 different font sizes to be displayed on the screen.
6. TV: Turn on the TV as you surf the Internet.
7. Exit: Quit from the Web, and return to the TV Home screen.

How To Use Your Email

- To setup your e-mail select E-mail from the menu and follow the steps in the E-mail setup guide

E-mail Setup

The Email Setup will allow you to choose between a Web-based email service, such as Hotmail or Yahoo mail, or to use the Email as provided by the SurfReady unit. The SurfReady Email allows you to take and send pictures and voicemail.



- If you are using a web based E-mail (such as Hotmail) select Web based E-mail and enter in the URL for the webpage in the field below (www.hotmail.com).
- If you are using normal E-mail, select Client-side E-mail
- Enter your username in the Username field (This should be the same as your ISP account username).
- enter the password for your username in the Password field.
- Fill in your ISP's SMTP server and/or POP server in the labeled fields depending on which one your ISP supports. Contact your ISP to find out the server's addresses.
- Select Always ask for password on startup if you would like the program to ask for your username password every time you access your e-mail.
- When done Select Back to return to the main setup screen.

• YOUR MAILBOX

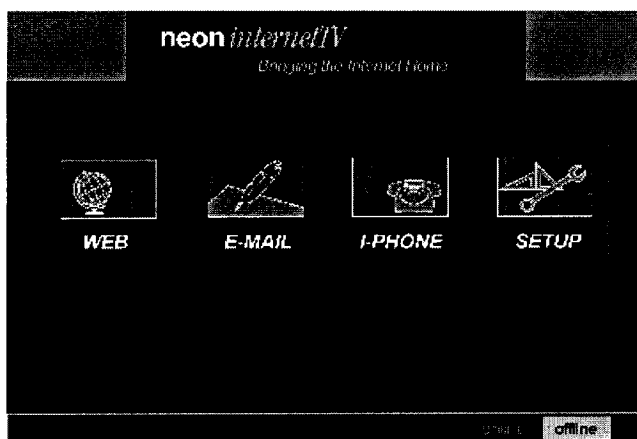
Once you've configured your mailbox, you will be taken to the mail mailbox screen. From here you can check for new messages, read your mail or compose mail to others.



GETTING STARTED to Use I-Phone

You can start Telephony in two ways.

- Method 1: If you are not on-line yet.
 1. Turn on your TV.
 2. Turn on the SurfReady and you will see the Entry Screen.



3. On this page you will see four options: Web, E-mail, I-Phone and Setup. Choose I-Phone.

- Method 2: If you are on-line already.

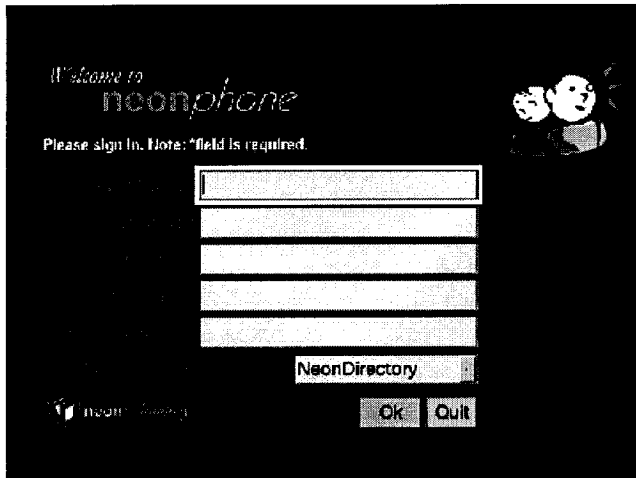
1. Find and press the Call key on the keyboard.

You will be asked to sign-in. Signing in tells people you are ready to receive phone calls and helps them to find you on the Internet.

• SIGN IN

You'll need to sign in before you can use the Telephony application. All you need to do is fill out the information on the sign in page.

1. Type in the information in the following fields. First Name, Last name, Country, Comment and E-mail address.
2. You may also select which logon server to use. In most cases, you will want to use the default server.
3. When you've finished, select OK to continue.
4. This will take you to the Telephony screen where you can place and receive calls.



Note: Your sign in information will serve as your identification to other people on line. Please fill it out as accurately as possible.

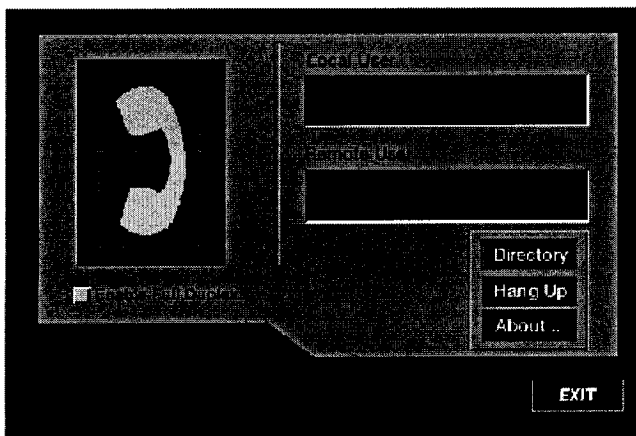
• MAIN SCREEN

You can place and receive calls from the main Telephony screen shown below. Be sure that the person you wish to call is on-line or you will not find them in the directory.

To receive a call, just answer when you hear it ring.

To place a call, just follow these simple instructions.

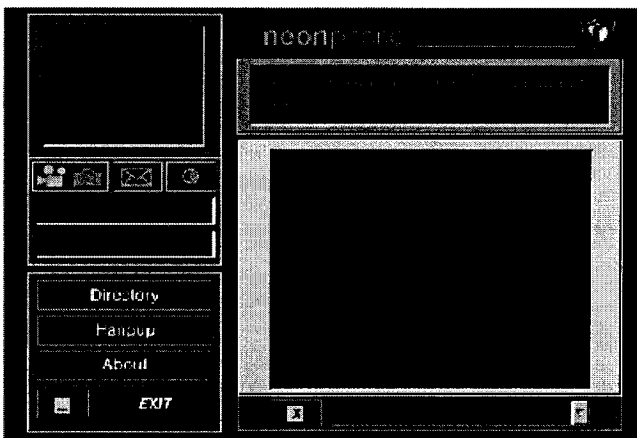
1. Point to the Directory button on the Telephony screen and select it.



You may select Hang-up to stop talking to someone. Select Quit to quit the application and return to the browser. About tells you more about the creators of the software.

If you have attached a video camera to your SurfReady, you will be able to send and receive live pictures while talking. In this case, your Telephony screen will appear as below.

Once a call is made, you may capture and send a picture first by selecting the Camera button to pose and freeze a picture, then Selecting the Envelope to send the picture to the party you're talking to. Selecting the X clears the picture area. Selecting the large window's title bar toggles between remote and local views.



• MAKING A CALL

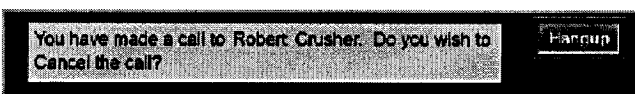
To place a call, just follow these simple instructions.

1. Point to the Directory button on the Telephony screen and select it.
2. Point to the letter of the alphabet of the person you want to call and select it.
3. Or select View all listings for the full listing of the people on line.
4. A list of available users will appear on your screen.
5. From the screen you may also change which directory server to search by selecting its name.





- Find the person you want to call from the list and point to Call Now and select it. This will take you to the Telephony screen.
- If you like, you may select Add to add them to your buddy list to make it easier to find them at a later time.
- You'll hear a dialing sound. Once the dialing sound stops you'll be connected.



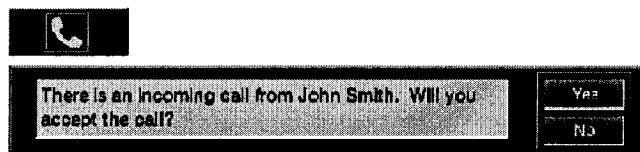
Note: If you accidentally called the wrong person, you may cancel your call by clicking on Hang-up on the Telephony screen. This will stop the call and leave you in the Telephony screen.

• RECIEVING A CALL

To receive a call, just follow these simple instructions.

- You can receive a call from the telephony screen. Remember, you must sign in first so people can find you on the Directory of online users.
- When you hear a ringing sound, point to the button Yes and select it to accept the call.
- Alternately, you may minimize the telephony screen by selecting the icon in the lower left corner. This lets you continue to browse the Web while waiting for a call. You will hear a ringing sound when a call comes in. While minimized, the following icon will appear in the lower left corner of the screen.

(Telephony minimized)



Note: Once you are in the Telephony screen anybody can call you. If you get a call from a stranger, you can reject that call by selecting the reject button. This will reject that call and leave you in the Telephony screen waiting for a new call.

• QUITTING

There are two ways to quit a conversation.

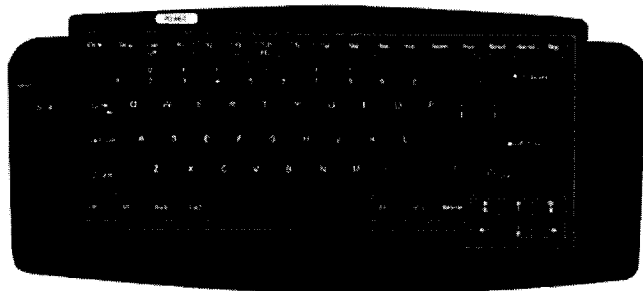
1. Method 1: Point to Hang-up on the Telephony screen and select it. This will stop the conversation, but leave you in the Telephony screen ready for a new call.
2. Method 2: Point to Quit on the Telephony screen and select it. This will stop the conversation and take you back to the Web browser. Please note that this will also log you out of the directory server, making you inaccessible to other users.

GETTING STARTED To DVD Only for NTV-2500

The DVD feature of your SurfReady set-top box allows you to have the ultimate in home entertainment. Simple to use and easy to enjoy, your DVD player will offer you hours of viewing pleasure.

To access the DVD player:

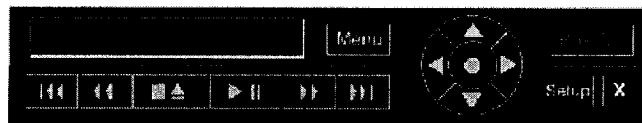
1. Power up the SurfReady set-top box and place a DVD into it.
2. Simply press the DVD button on the remote keyboard or click DVD on the screen menu. Wait for the player to load the DVD.



3. From there, you can either use the arrow and select keys on the remote keyboard to navigate in the DVD player or use the DVD Controls Menu.

• DVD CONTROLS MENU

For control of the play options, you should use the DVD Controls Menu. This can be accessed while you are within the DVD feature of your set-top box by pressing the **MENU** button on your remote keyboard. This will open up the DVD Controls Menu at the bottom of the screen.



• SETUP MENU

Through the DVD Controls Menu, you can enter the Setup Menu by clicking **SETUP** on the DVD Controls Menu. This menu includes many different options for your DVD player.

