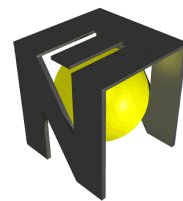


Neon STB User Manual

FCC ID: NJZNTFPSMSFD11NT

Trade name: websurfer

Model: NTFPSMSFD11NT



neon*technology*

FCC Warning

This equipment has been tested and found to comply with the limits for a class B digital device pursuant to part 15 of FCC Rules. These limits are designed to provide reasonable protection against harmful interference in a residential installation. This equipment generates, uses, and can radiate radio frequency energy and, if not installed and used in accordance with the instructions, may cause harmful interference to radio communications. However, there is no guarantee that interference will not occur in a particular installation. If this equipment does cause interference to radio or television reception, which can be determined by turning the equipment off and on, the user is encouraged to try to correct the interference by one or more of the following measures:

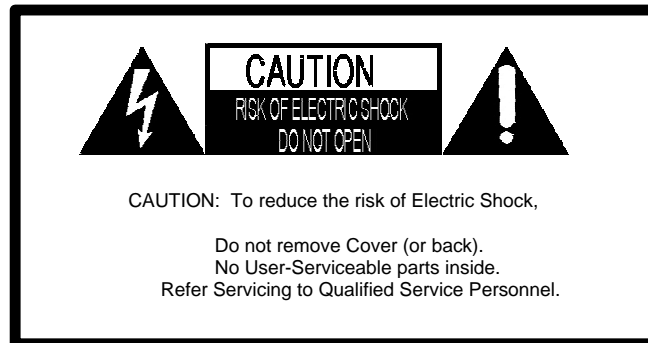
- Reorient or relocate the receiving antenna.
- Increase the separation between the equipment and receiver.
- Connect the equipment into an outlet on a circuit different from that to which the receiver is connected.
- Consult the dealer or an experienced radio/TV technician for help and for additional suggestions.

The user may find the following booklet prepared by the Federal Communications Commission helpful: "How to Identify and Resolve Radio-TV interference Problems." This booklet is available from the U.S. Government Printing Office, Washington, D.C. 20402, Stock No. 004-000-00345-4.

The user is cautioned that changes or modifications not expressly approved by the manufacturer could void the user's authority to operate the equipment.

Safety Precautions

To prevent fire or shock hazard, do not expose the [NeonSTB] to rain or moisture.



This symbol is intended to alert the user to the presence of uninsulated "dangerous voltage" within the product's enclosure that may be of sufficient magnitude to constitute a risk of electric shock to persons.



This symbol is intended to alert the user to the presence of important operating and maintenance (servicing) instructions in the literature accompanying the appliance.

Table of Contents

WELCOME -----	1	CHAPTER 4 -- ELECTRONIC MAIL ---	21
NEON SET-TOP BOX FEATURES-----	1	GETTING STARTED-----	21
CHAPTER 1 -- CONNECTIONS -----	2	SETING UP YOUR MAILBOX-----	22
STEP 1: AUDIO/VIDEO CONNECTIONS -----	2	READ MAIL-----	23
STEP 2: TELEPHONE CONNECTION -----	5	TO WRITE MAIL-----	23
STEP 3: OPTIONAL CONNECTION -----	6	TO REPLY TO MAIL-----	24
STEP 4: ATTACH POWER -----	7	FORWARD A MAIL -----	25
CHAPTER 2 -- CONFIGURE BOX -----	8	CHECK MAIL -----	25
STEP 1: BEFORE YOU START -----	8	DELETE MAIL -----	25
STEP 2: POWER UP -----	9	QUITTING -----	25
STEP 3: CONFIGURATION SCREEN -----	10	CHAPTER 5 -- THE MAIN MENU -----	26
STEP 4: ENTERING INFORMATION -----	11	ACCESSING THE MENU -----	26
CHAPTER 3 -- WEB BROWSING -----	12	WEB -----	27
GETTING STARTED -----	12	<i>Function descriptions</i> -----	27
GOTO -----	13	PEOPLE -----	28
SEARCH-----	13	<i>Function descriptions</i> -----	28
EXPLORE A PAGE -----	14	BOX-----	29
FIND-----	15	<i>Function descriptions</i> -----	29
NAVIGATE-----	16	APPENDIX A -- INTRO. TO THE	
FAVS -----	17	INTERNET -----	30
RECENT-----	19	HISTORY OF THE INTERNET -----	30
PRINT -----	20	WEB TERMS -----	31
		E-MAIL TERMS -----	32
		GENERAL TERMS-----	32
		APPENDIX B -- TROUBLESHOOTING	34
		APPENDIX C -- SPECIFICATIONS -----	36
		APPENDIX D -- ISPS -----	37
		APPENDIX E -- QUICK REFERENCE--	38
		<i>Function descriptions</i> -----	38

Welcome

Congratulations on your purchase of the [NeonSTB], your gateway to the Internet.

We know many of you would like to jump right in and use your [NeonSTB] to surf the Internet, but before you do this you must do the following two things. First, you must connect the Neon STB to your television and phone line. Second, you must subscribe to an Internet Service Provider, or an “ISP”. This can be any ISP that supports PPP and PAP protocols (don’t worry, most do). If you don’t have an ISP subscription or aren’t sure what an ISP is, please see **Appendix D – ISPs** to help you get started. We also recommend that you read **Appendix A – Introduction to the Internet**. This section will give you an idea of what the Internet is and what you do with it.

[NeonSTB] features

The [NeonSTB] provides the best features the Internet has to offer. These include: web browsing, electronic mail (or e-mail), multimedia and printer support.

The [NeonSTB] has a web browser built in which allows you access to web pages, where you can find useful information no matter what your interest: education, community, activities, sports, science, gaming, and much more. For more information about how to browse the web, see **Chapter 3 – Web Browsing**.

The [NeonSTB] also supports e-mail, so you can send and receive electronic messages to anyone who has an Internet e-mail address, anywhere in the world – without a pen, piece of paper, or a stamp. Best of all, the message can be received within seconds. To learn how to use e-mail, see **Chapter 4 – Electronic Mail**.

You can also attach speakers to the [NeonSTB] to fully experience the built-in audio capabilities. Connecting a printer to the built-in port allows you to print out web pages, pictures, and e-mail messages. See **Chapter 1 – Connections** to learn more about how to connect the [NeonSTB] to speakers, printers and other accessories. See **Chapter 3 – Web Browsing** to learn more about how to use a printer with your [NeonSTB].

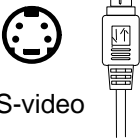
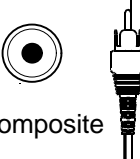
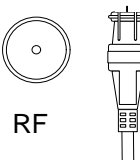
Chapter 1 -- Connections

This chapter will help you connect the [NeonSTB]. For proper connection, please complete each step in order.

- Step 1: Audio/Video Connections
- Step 2: Telephone Connection
- Step 3: Optional Connections
- Step 4: Attach Power

Step 1: Audio/Video Connections

The [NeonSTB] uses your television to display pictures and web pages in your living room. You must connect the [NeonSTB] to the video input of your television or VCR. Your television has at least one of the following different types of video input jacks: S-Video, A/V composite video, or RF coaxial. If you are unsure which video jack(s) you have, locate the connector panel on the back of your TV and compare the available jacks to the pictures below.

 <p>S-video</p>	<p>If your television has an S-Video jack, you should use the S-Video cable because it will provide the best picture quality.</p>
 <p>Composite</p>	<p>Most modern television sets have RCA type A/V jacks. An A/V connection to the [NeonSTB] can be made directly to the television, or if your VCR is already connected to your television, connect the [NeonSTB] to your VCR.</p>
 <p>RF</p>	<p>If your TV has only a RF coaxial jack, you must connect the [NeonSTB] to your TV through a VCR. In this scenario, do the following:</p> <ol style="list-style-type: none"> 1. Connect the [NeonSTB] to the VCR by either S-Video or A/V Video Cable 2. Connect VCR to TV by RF Coaxial cable 3. Set your VCR to Video Mode 4. Set Television to the appropriate channel (3 or 4).

NOTE: Remember to use either S-Video or A/V Video, not both. (S-Video will result in better quality).

Connecting to a TV or VCR with an S-VIDEO jack

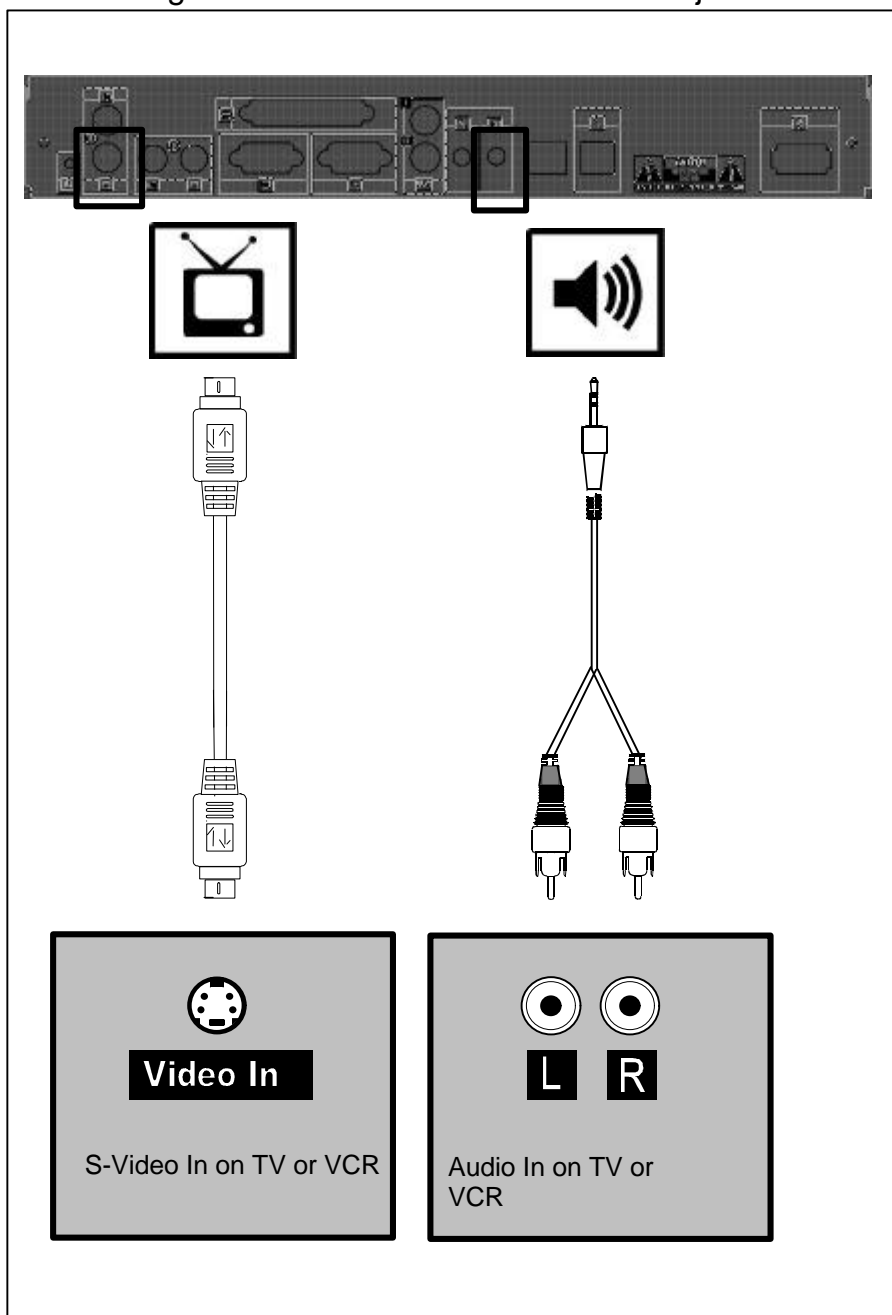


Figure 1.1 S-VIDEO Connection

Connecting to a TV or a VCR with RCA jacks

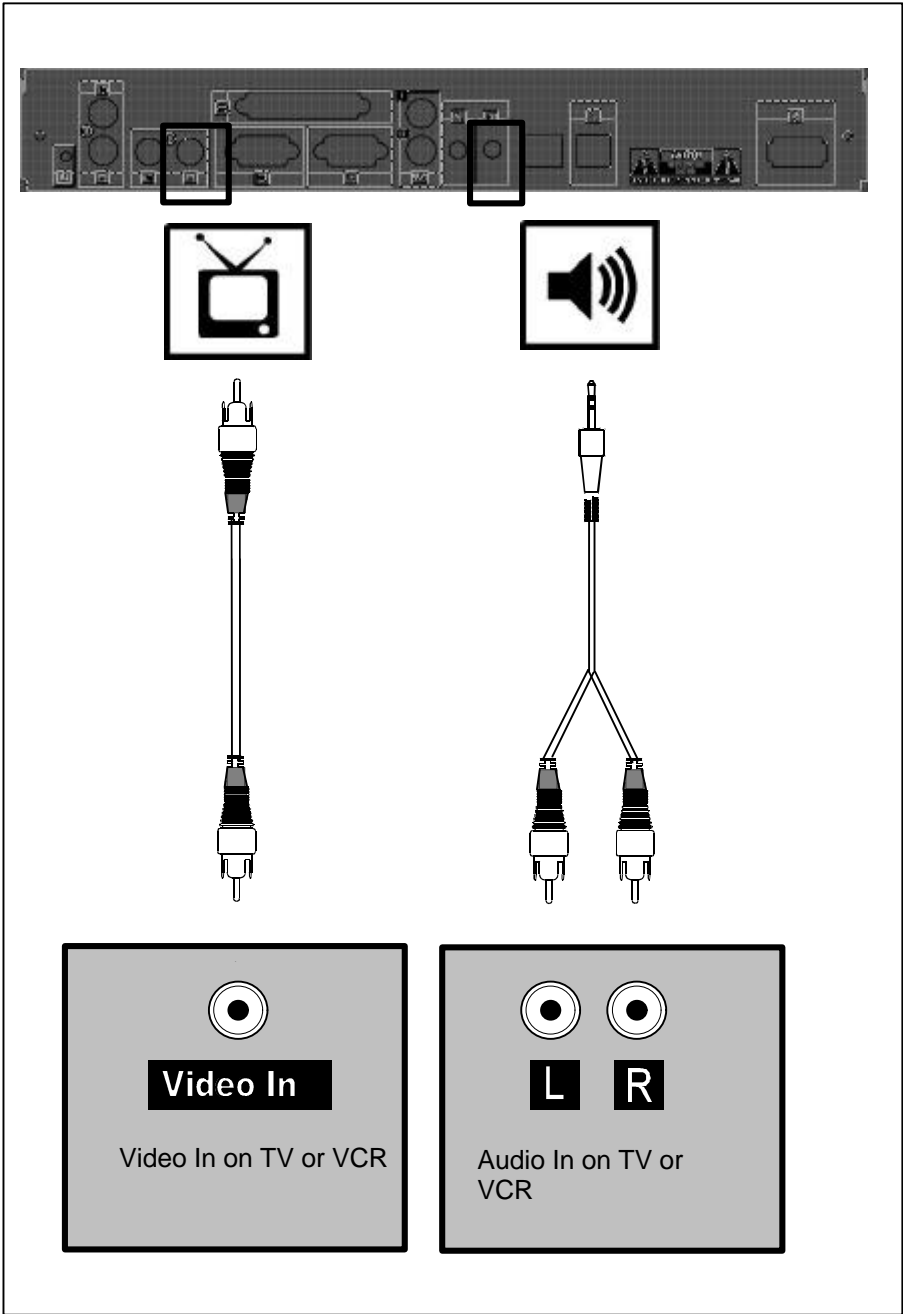


Figure 1.2 RCA Connection.

Step 2: Telephone Connection

The [NeonSTB] uses an ordinary telephone line to connect to the Internet. Connect the [NeonSTB] to a telephone jack using the telephone cable provided. If you wish to connect a telephone to the same jack, you can use the T-splitter. This will enable you to keep both the [NeonSTB] and your telephone plugged in at the same time.

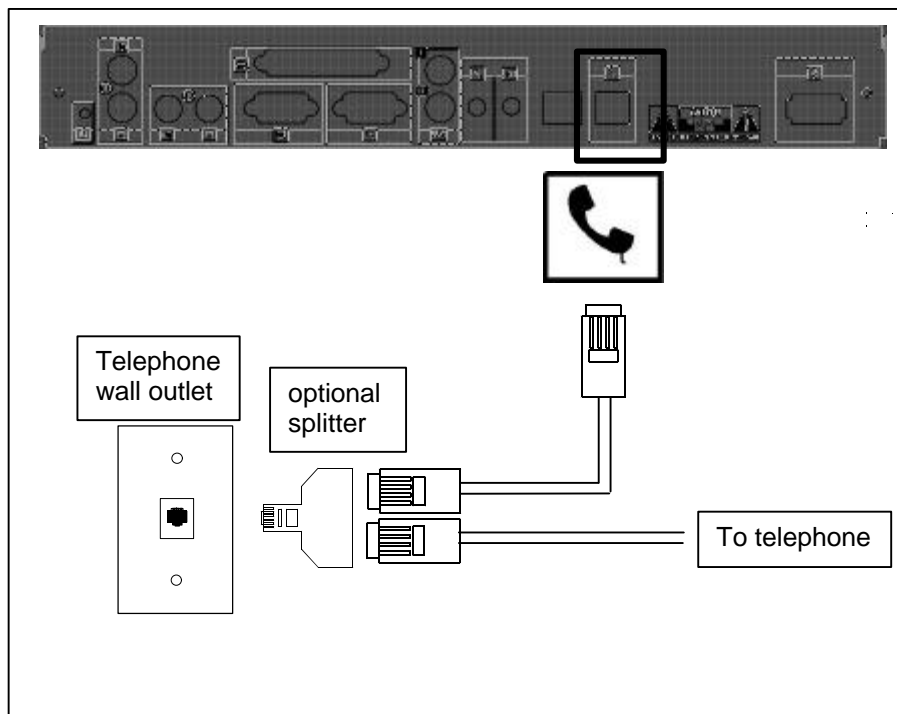


Figure 1.4 Telephone Connection.

Note: Remember, you cannot use your telephone and [NeonSTB] at the same time. If you pick up the telephone handset while the [NeonSTB] is online; you will disrupt its connection (you will also hear a loud, high-pitched sound – this is the [NeonSTB] “talking”). Also, a call-waiting signal may disconnect the [NeonSTB] from the Internet. When this happens, you can simply re-connect and continue where you left off. If you have call waiting and do not want this to happen, you may enable/disable this feature while you are using the [NeonSTB] by setting an option when you first configure the box. Please see Chapter 2 – Configure Box for more information.

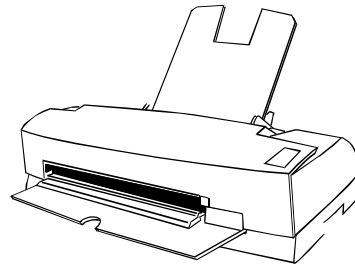
Step 3: Optional Connection

Printer

A printer can be attached for printing information you find useful. A color printer allows you to print full color photos and artwork you find on the Internet. If this is your first time using the [NeonSTB], you may skip this step and return later.

Your [NeonSTB] supports printers from the following manufacturer's:

Hewlett Packard
Epson
Canon



To connect a printer simply connect one end of a parallel printer cable to the printer port jack on the back of the [NeonSTB] (see figure below). Then connect the other end of the printer cable to the connector on your printer (refer to the printer owner's manual). You will **not** need to use the software disks that came with your printer. All you need to do is choose the printer as follows.

To choose a printer, follow these steps:

1. Press **Menu** to call up the Main Menu.
2. Point to the button marked **Box** and select it.
3. Point to the button **Peripherals** and select it.
4. A window will be displayed. Choose which printer you have connected.

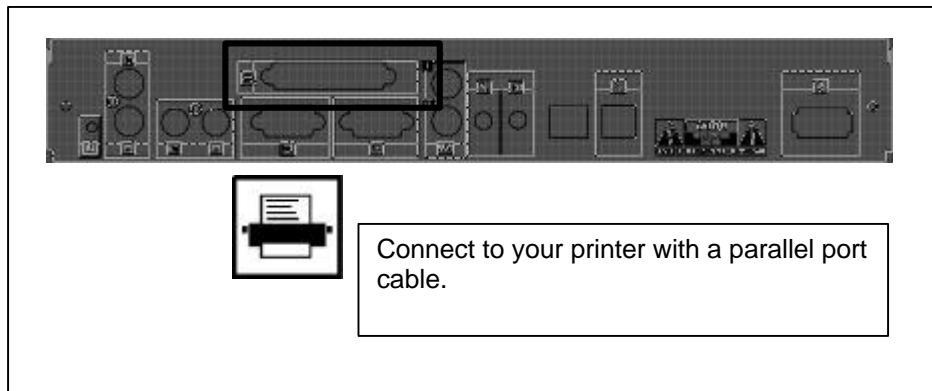


Figure 1.5 Printer Connection.

Step 4: Attach Power

Finally, attach the AC power cord to the [NeonSTB], then plug into a standard AC power outlet.

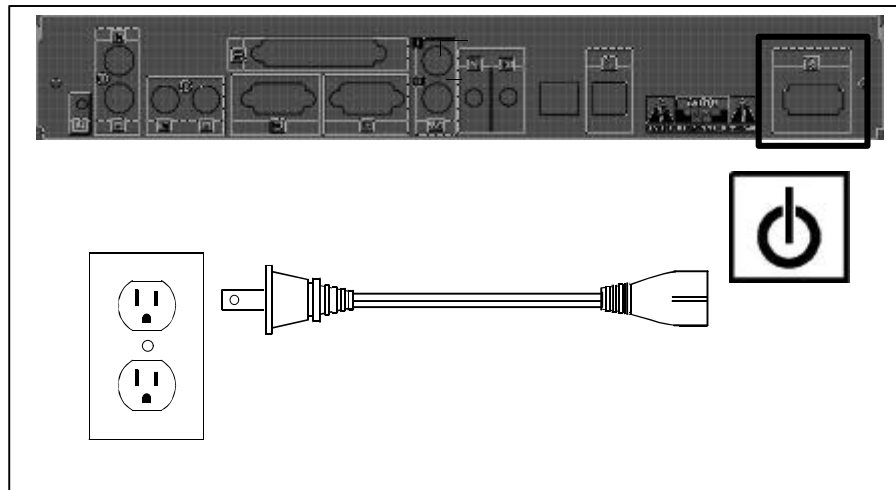


Figure 1.6 Attach Power.

After plugging in the [NeonSTB], it will spend a moment configuring itself. You should see the two lights on the front of the [NeonSTB] flash. When the unit has configured itself, the lights will turn off. Once you press the **Power** key on the remote keyboard, the green light labeled **Power** should come on immediately, indicating that the [NeonSTB] is receiving power.

The yellow light labeled **Transfer** will blink anytime the [NeonSTB] is downloading, or getting information from the Internet.

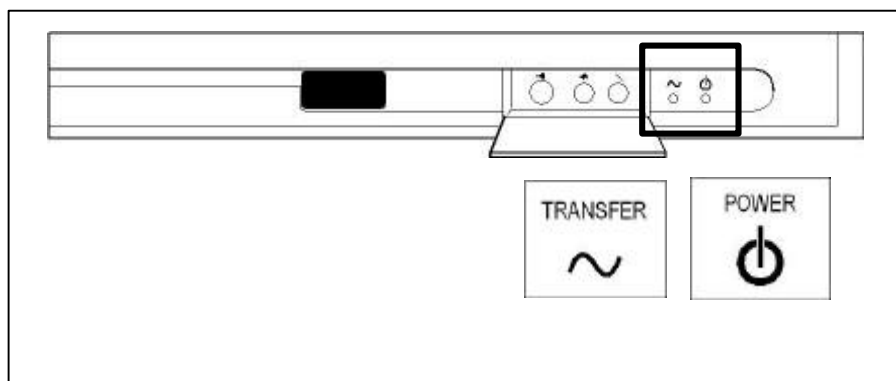


Figure 1.7 Front of the Neon STB.

Chapter 2 – Configure Box

This chapter will help you configure your [NeonSTB]. Please complete each step in order. Remember, you'll need to subscribe to an ISP in order to complete this chapter. If you don't have an ISP subscription or don't know what an ISP is please see **Appendix A – Introduction to the Internet** and **Appendix D -- ISPs** for more information.

- Step 1: Before you start
- Step 2: Power up
- Step 3: Configuration screen
- Step 4: Entering information

Step 1: Before you start

To configure the [NeonSTB], you must obtain the following information from your ISP. It is important to obtain the following information or else your [NeonSTB] will not function properly. When calling your ISP you'll need a pen to fill out the information in the blank space we have provided. Writing this information down is important because you'll need to type in this information in Step 3 of this chapter. If your [NeonSTB] was pre-configured with an ISP, please check the packaging for an insert with the information you need below.

Box ID	A unique serial number identifying your [NeonSTB].
ISP phone number 1	Local phone number to dial to connect to Internet.
ISP phone number 2	Alternate number.
ISP/Mail username	ISP Username
ISP/Mail password	ISP Password
Dial Prefix (opt)	Optional dial prefix (ie dial 9 first)
SMTP server IP	For outgoing e-mail.
POP server IP	For incoming e-mail.

Step 2: Power up

1. Turn on your TV and VCR.
2. Press the **Power** button on the keyboard to turn on the [NeonSTB]. The green light on the front panel of the [NeonSTB] should come on.

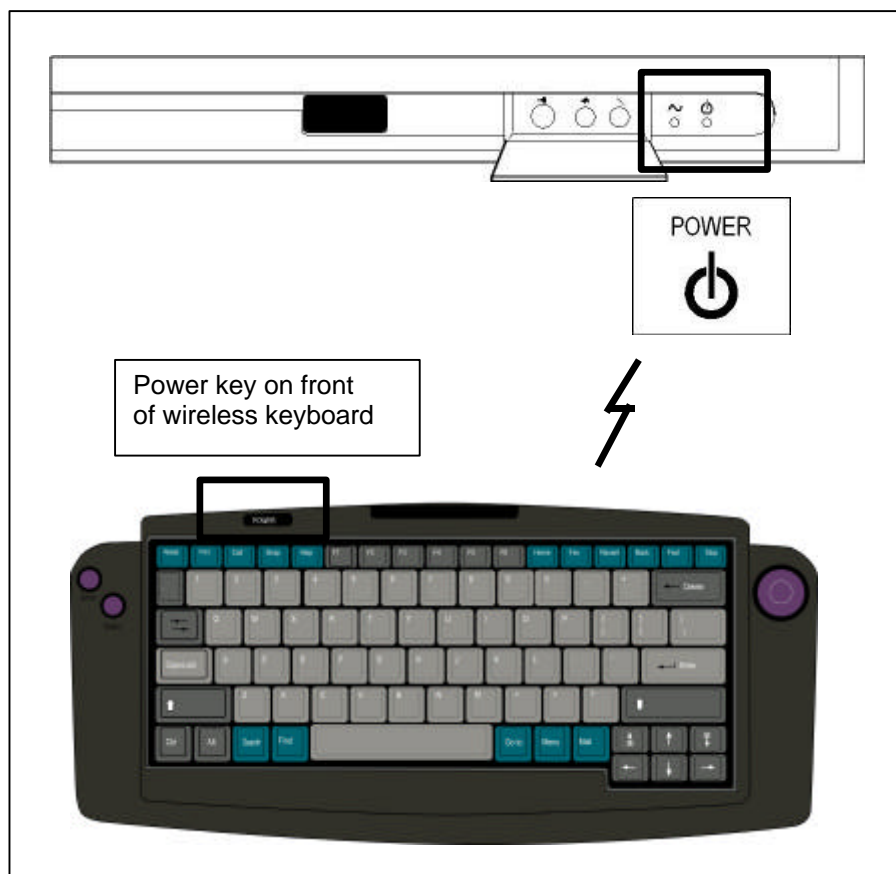


Figure 2.1 Power up for the first time.

Step 3: Configuration screen

After power up you will see the following screen displayed on your TV. Follow the on-screen instructions to configure your [NeonSTB] for the first time.

Show screen highlighting the configure box.



Figure 2.2 Start up page.

Note: If you are unable to see this page there may be something wrong with your connections. Make sure the lines are connected properly and that the TV is in the right Auxiliary Channel. For further information about connections see Chapter 1 – Connections.

Step 4: Entering information

Use the information you gathered in Step 1 to complete the screen below.

Show screen with sample text entered in.

Figure 2.3 Configure Box.

Chapter 3 – Web browsing

This chapter will introduce the web browsing functions of the [NeonSTB]. Web browsing allows you to navigate and explore the World-Wide Web (WWW or Web for short) on the Internet. We will cover the following topics:

- Getting Started
- Goto
- Search
- Explore a page
- Find
- Navigate
- Favs
- Recent
- Print

Getting started

Before you start using the [NeonSTB] you'll need to connect to the Internet.

To connect to Internet:

1. Turn on your TV/VCR.
2. Turn on the [NeonSTB].
3. On this page you will see four options: Browse web, e-mail, configure box, and quit. Choose **Browse web**. This will connect you to the Internet.



Show dialer window.

Figure 3.1 Dialing progress indicator.

Note: If you are having problems connecting to the Internet, make sure that the ISP configuration information you entered in the previous chapter is correct. Call your ISP to make sure the information your ISP gave you is correct.

Goto

The easiest way to go to a web page is to use the **Goto** function. The **Goto** toolbar allows you to go directly to a page by typing in an Internet address or URL. An example of an Internet address is: www.yahoo.com. For further information about Internet addresses see **Appendix A – Introduction to the Internet**.

To go directly to a page:

1. Press the **Goto** key on your keyboard (you may also access most functions through the Main Menu – please see **Chapter 5**).
2. Type in the Internet address in the space provided.
3. Point to **Go** and select it. The page you entered will appear on your screen. You may point and select **Cancel** to cancel this operation. If the page you expected does not appear, please check your spelling and try again.

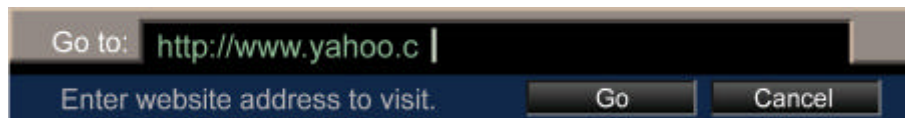


Figure 3.2 Goto Toolbar.

Search

If you don't know the Internet address you wish to visit, you can use **Search** to help you find what you are looking for. **Search** takes you to your search page, which enables you to search the Internet for a page or information on any topic you like.

To go to your search page:

1. Press the **Search** key on your keyboard. This will bring you to your search page with links to different topic areas and a form allowing you to search for specific information.

To search for specific information:

1. Type a topic in the search text box. You can enter one word, many words, or even a sentence. Select the button next to the text box to start your search.
2. A list of search results will appear on your screen.
3. Select links from the list which interest you.

Explore a page

Web pages come in all different sizes and shapes. You'll need to learn how to explore a page to view all its contents. These are the keys you'll need to explore a page. **Scroll up, Scroll down, Arrow keys, Select, Scroll** and **Mouse** buttons.



Figure 3.3 Explore Keys.

To move around the page:

1. To scroll up and down through web content one page at a time, press **Scroll up** or **Scroll down** buttons on your keyboard.
2. You may also use the **Arrow keys** to scroll. For example, pressing the right arrow key will move the screen to the right.

To select a link*:

1. Move the **Mouse** around until the arrow on screen touches the link. The arrow should change to a hand, indicating that the text or graphic can be selected.
2. Press **Select** to go to the link.

*** Links: The connection between one web page and another. On the Web, a link can be either text or graphics. Often a browser will indicate links by coloring them differently than plain text or graphics or underlining them.**

Find

Sometimes web pages are very big. Instead of reading through the web page to find the information you want, you may want to use the **Find** function. The **Find** toolbar helps you find a specific word or phrase on the current page.

To find a specific word or phrase on a page:

1. Press the **Find** key on your keyboard.
2. Type in the word or phrase you are looking for in the find toolbar.
3. Point to **Start at Top** and select it. The first word or phrase that matches your input will be highlighted on the page.
4. Point and select **Find again**, this will take you to the next word or phrase that you entered. Repeat this process until you find the word or phrase you are looking for. You may cancel the operation anytime by selecting the **Cancel** button. If the word or phrase is not found on the page, you will be notified.

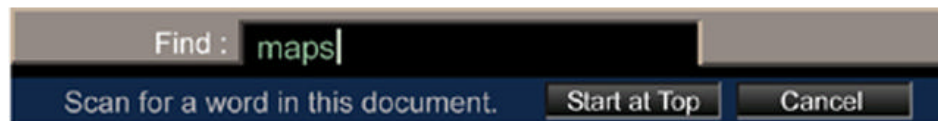


Figure 3.4 Find Toolbar.



Figure 3.5 Finding a word or phrase in a web page.

Navigate

These buttons will help you navigate between Web pages on the Internet.

Reload: Reloads a page. This is useful when a page loads up incorrectly or has been interrupted. Reloading the page will try again.

Stop: Stops a page from loading or reloading. This is useful when you take a wrong turn on the Internet. You may press **Back** after you press **Stop** to go back one page.

Back: Takes you back to the last page that you have visited. Pressing **Back** again will take you back yet another page you've visited and so on.

Fwd: If you've used **Back**, this key allows you to move forward through the list of Web pages you've visited.

Home: Takes you back to your home page. This is the first page you'll see after you are connected to the Internet.



Figure 3.6 Navigation Keys.

Favs

When you come across a Web page that you find particularly interesting or useful, you'll want to come back to it again. The best way to do so is to use the **Favs** function. The **Favs** function saves your favorite Web pages and let you have access to that web page without typing in the Internet address each time.

To save a page to your Favs list:

1. Go to the page you want to save.
2. Press the **Favs** key on your keyboard to bring up the **Favs** toolbar.
3. Point to **Add** and select it. You'll see a title of the page you just added appear on the **Favs** toolbar. As you add more pages, you'll start to form a list. This list will be called your Favs list.
4. Point to and select **Close** to close the Favs toolbar.

To go to a page in you Favs list:

1. Press the **Favs** key on your keyboard to bring up the **Favs** toolbar.
2. Point to the title of the page you want to go to and select it. Or, use the **Arrow keys** to highlight the title of the page you want to go to.
3. Point to and select the **Go** button.

To Delete a page from your Favs list:

4. Press the **Favs** key on your keyboard to bring up the **Favs** toolbar.
1. Point to the title of the page you want to delete and select it. Or, use the **Arrow keys** to highlight the title of the page you want to delete.
2. Point to and select **Delete** to delete this page from you Favs list.
3. Point to and select **Close** to close the Favs toolbar.

You can also sort your Favs list Alphabetically from A to Z.

To sort your list:

5. Press the **Favs** key on your keyboard to bring up the **Favs** toolbar.
1. Point to **Sort** and select it.
2. Point to and select **Close** to close the Favs toolbar.

Favs

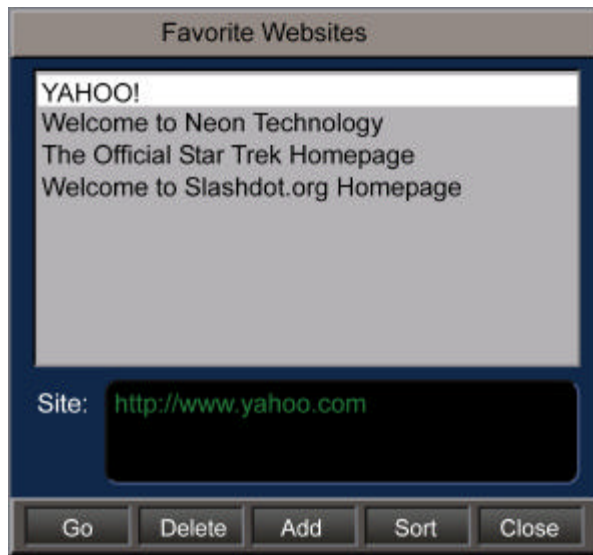


Figure 3.7 Favs Toolbar.

Recent

The Internet is a big place and sometimes you might feel lost. The **Recent** function keeps track of the most recent web pages you have visited so you can see where you have been and how you got there.

To activate the **Recent** function just press the **Recent** key on the keyboard. This will bring up a screen displaying a list of the web pages that you have been to most recently, with the most recent starting at the top of the list. You may go to any of the web pages on this list.

To go to a web page on the Recent list:

1. Point to the title of the web page you want to go to on the Recent list and select it. Or, use the **Arrow keys** to highlight the title of the page you want to go to.
2. Select the **Go** button.

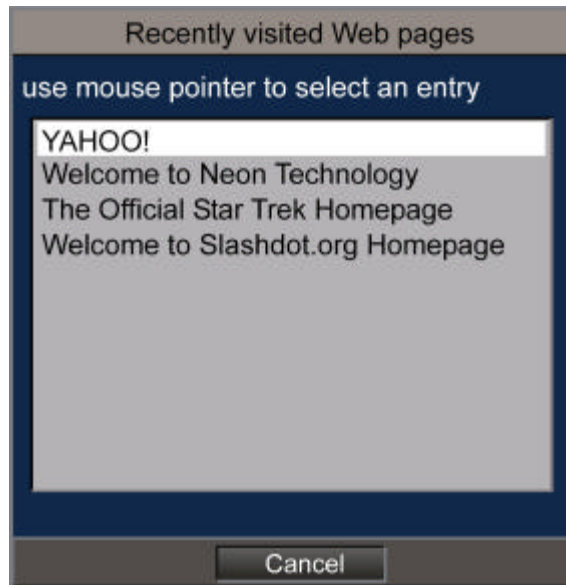


Figure 3.8 Recent List.

Print

You may print out a web page if you have a supported printer connected to your [NeonSTB]. If you have not already done so, please see **Chapter 1 – Connections**, which has instructions for attaching and configuring a printer.

To Print:

1. Press the **Print key** on the keyboard.
2. Make sure that your printer shown on screen is the same printer you have physically connected. If the wrong printer is selected, go back to **Chapter 1 - Connections**.
3. Select the range you want to print in. For example, if a web page is 5 pages long, but you only want to print the first two pages, you may do so by typing in 1-2 in the range box. Always type in “-”, for example pages 1 through 3 would be 1-3 not 3. If you didn’t include the “-” the printer will only print the first page.
4. Select the number of copies you want in the copies box. “1” will print out one copy of the page. “2” will print out two copies of the page and so on.
5. Select resolution in resolution box. A window will pop up with resolution chooses. The higher the resolution the longer it will take to print but higher quality output is produced. It is usually recommended to print at 300dpi resolution.
6. Select the color in the color box. Either black and white or color. If your printer only support black and white always choose black and white.
7. Select the Ink type from the Ink box. Choose black and white only if you have black and white printer.
8. Point to **Print** and select it, or select **Cancel** to cancel this operation.

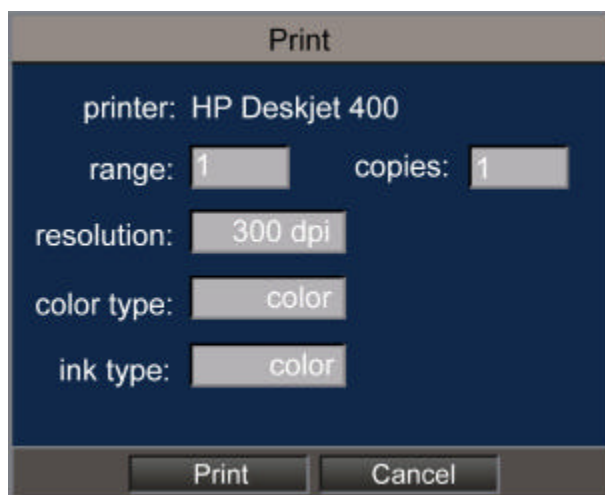


Figure 3.9 Print Toolbar.

Chapter 4 -- Electronic Mail

Another popular tool used on the Internet is the electronic mail (e-mail for short). This chapter will show you how to use e-mail on your Neon STB. The topics includes:

- Getting started
- Setting up your mailbox
- Read mail
- Write mail
- Reply to a mail message
- Forward a mail message
- Check for new mail
- Delete old mail
- Undelete mail
- Quitting

Getting Started

You can start e-mail in two ways:

Method 1: If you are not on-line yet.

1. Turn on your TV.
2. Turn on the Neon STB.
3. On this page you will see four options: Browse web, e-mail, configure box, and quit. Choose **e-mail**.

Method 2: If you are on-line already.

1. Press the **Mail** button on your keyboard.

Setting up your mailbox

If this is your first time using the e-mail function you'll need to set up your mailbox now. Your mailbox is the starting point of your e-mail use and it's where your e-mail is stored.

1. Type in the information in the following fields: **Your Name, Your UID, SMTP Server, POP Server, and POP password**. You can obtain this information from your ISP. Please refer to **Chapter 2** for more information.
2. When you've finished, select **Save** to save the information.
3. This will take you to your mailbox with your current messages already in them.

Show the box with your name, your UID, SMTP server, Pop Server, and Pop password.

Figure 4.1 Configure Mailbox.

Note: *If you are having problems connecting to your mailbox make sure the information on this screen is input correctly and make sure that the information that you obtained from your ISP is correct. To go back to this screen point to Configure on your mailbox's screen and select it. Correct any problems and save again.*

Read mail

This is how to read e-mail that is sent to you by your friends, families, and co-workers.

1. From your mailbox point to the mail you want to read and select it.

Show the mailbox with an e-mail selected.



Figure 4.2 Mailbox.

To write mail

This is how to create e-mail messages and send them to your friends, family or co-workers.

1. From your mailbox point to **Write Mail** and select it.
2. From this screen fill out the persons e-mail address that you want to write to in the **To** field.
3. Fill in other people's e-mail address in the **Cc** field if you want to send a copy of this letter to them in addition to the main addressee.
4. Fill in the subject of this letter on the **Subject** field.
5. Type your letter into the large blank space.
6. To send the e-mail select **Send**. To cancel this action select **Cancel**.

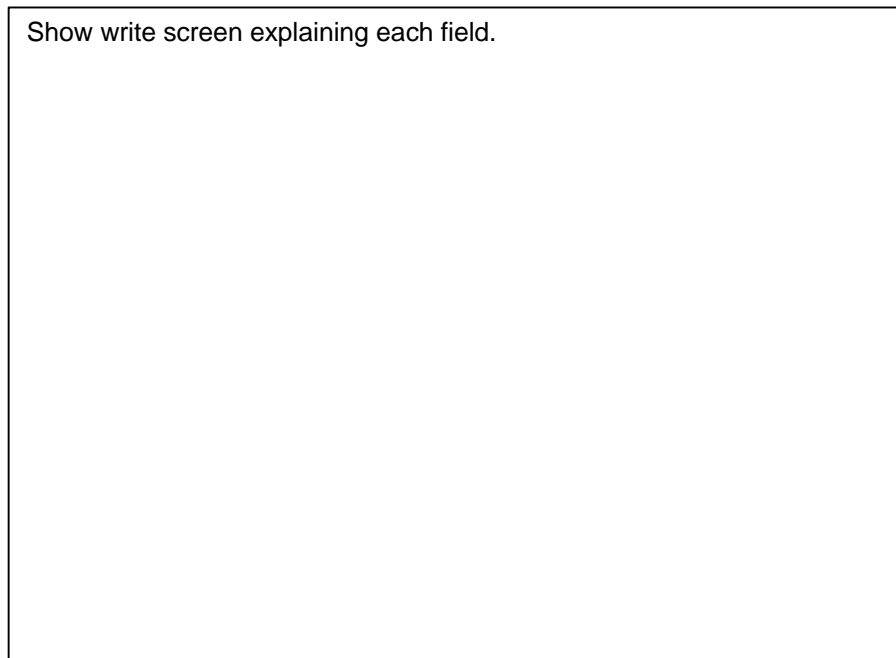


Figure 4.3 composing an e-mail.

To Reply to mail

This is how to reply to an e-mail that is sent to you by a friend, family member or co-worker.

1. From your mailbox point to the mail you want to reply to and select it. This will open up the selected e-mail for reply.
2. Now point to **Reply** and select it. You will be taken to a new screen similar to the screen where you write e-mail messages only the **To** field is automatically filled in with the e-mail address of the person you are replying to.
3. Fill in other people's e-mail address in the **Cc** field if you want to send a copy of this letter to them.
4. The subject field will be filled in, but you may change the subject if you like.
7. Type your message into the large blank space.
5. To send the mail select **Send**. To cancel this action select **Cancel**.

Forward a mail

This is how to forward a letter that you receive to your friends, family, or co-workers.

1. From your mailbox point to the mail you want to Forward and select it. This will open up the selected e-mail.
2. Now point to **Forward** and select it. You'll be taken to a new screen.
3. Fill out the persons e-mail address that you want to forward this letter to in the **To** field:
4. Fill in other people's e-mail address in the **Cc** field if you want to forward a copy of this letter to them.
5. The subject field will be filled, but you may rename the subject if you like.
6. You may add extra text to the forwarded letter in the large blank space.
7. To send the mail select **Send**. To cancel this action select **Cancel**.

Check mail

How to check for new mail.

1. Point to **Check mail** from your mailbox and select it.
2. New mails will be shown on screen in your mailbox. If not, that means no new messages have been received.

Delete mail

1. From your mailbox point to the mail you want to delete and select it.
2. Select **Delete** to delete the mail.

Quitting

To quit e-mail:

1. From your mailbox point to **Exit** and select it. This will take you back to your browser.

Chapter 5 – The Main Menu

This chapter serves as a reference to the functions available from the Main menu. The Main menu toolbar gives you quick, visual access to the major features of your [NeonSTB]. We will cover the following topics:

- Accessing the Menu
- Web
- People
- Box

Accessing the Menu

Press the **Menu** key on the keyboard. The Main menu will appear at the bottom of your television screen.



The Main menu is divided into the following categories: web, people, and box. The Web category contains functions that help you navigate the web. The functions in People can help you find and communicate with your friends and family on the Internet. Functions in the Box category allow you to configure certain settings of the set-top box.

You can move between categories, by using the **Mouse** and the **Select** key on the remote to select the category you wish to view. You may also press the **Tab** key repeatedly to cycle through the categories. Selecting a category displays a menu of options. You can use the **Mouse** or the **Arrow keys** to move between the menu options.

The bar at the very bottom of the main menu displays the name of the Internet Web page you are currently visiting. Selecting the bar toggles between displaying the page's title and it's Internet address (URL).

Web

Under Web, you will find functions that are related to browsing the Web on the Internet. These functions can also be found on your keyboard.



FUNCTION DESCRIPTIONS

GO TO	allows you to directly type in the URL address of a specific Web page you wish to visit
SEARCH	search for a topic of interest to you on the World Wide Web
FIND	looks for a word on the current Web page
HOME	returns you to your Home page
FAVORITES	allows you to save and share your favorite Web pages
RELOAD	redraws the current Web page
PRINT	allows you to print the currently displayed Web page

People

These functions are related to communication aspects of the Internet, such as e-mail, internet telephony, and video snapshot.



FUNCTION DESCRIPTIONS

E-MAIL	send or check your mailbox for e-mail
CALL	allows you to make a voice call over the Internet

Box

Add features to your Neon STB, such as a printer, digital video camera, or set call waiting options.



FUNCTION DESCRIPTIONS

PERIPHERALS	allows you to add optional peripherals such as a printer or external camera
USERS	allows you to configure multiple user accounts
PREFERENCES	allows you to configure your individual preferences
CLICK TOGGLE	toggles the keyboard sound effects on and off
LANGUAGE	allows you to select a language for Web pages to be displayed in

Appendix A – Intro. to the Internet

In this chapter we are going to explain what the Internet is and two of its most popular tools, the web and e-mail. We also provided definitions of some of the more common terms used on the Internet. The terms are organized into three categories: Web, e-mail and general terms:

- History of the Internet
- Web terms
- E-mail terms
- General terms

History of the Internet

The Internet, often called simply "the Net," is a worldwide system of computer networks. It was conceived by the Advanced Research Projects Agency (ARPA) of the U.S. government in 1969 and was called the ARPAnet. One story claims the original intent was to construct a network that would continue to function even if a large portion of it were destroyed, for example, in the event of nuclear war.

The Internet is now a public, cooperative, and self-sustaining facility accessible to tens of millions of people worldwide. Physically, the Internet uses a portion of the total resources of the currently existing public telecommunication networks. Technically, what distinguishes the Internet is its use of a set of protocols called TCP/IP (Transmission Control Protocol/Internet Protocol).

The most widely used part of the Internet is the World Wide Web or Web as many people call it. Its outstanding feature is hypertext, a method of instant cross-referencing. In most Web sites, certain words or phrases appear in text of a different color than the rest. When you select one of these words or phrases, you will be transferred to a site relevant to the word or phrase. This is done by pointing and selecting certain words or phrases with your keyboard.

Another tool that is used by many Internet users is electronic mail or e-mail. This tool lets people on the Internet compose letters to other people with an e-mail address without using a pen, piece of paper, or a stamp. Best of all, the message can be received within seconds.

Other popular functions of the Internet includes text based chat, which allow you to carry on live "conversations" with other computer users. More recently, Internet telephony hardware and software allows real-time voice conversations on the Net without the standard fees associated with regular telephone calls.

Web Terms

World Wide Web (WWW) or the web: a collection of Internet web sites that are tied together. Technically it is a global (Worldwide) hypertext system that uses the Internet as it's transport mechanism. In a hypertext system, you navigate by clicking hyperlinks, which display another document which also contains hyperlinks. Created in 1989 at a research institute in Switzerland, the Web relies upon the hypertext transport protocol (http), an Internet standard that specifies how an application can locate and acquire resources stored on another computer on the Internet. Most Web documents are created using hypertext markup language (html), an easy to learn coding system for WWW documents. Incorporating hypermedia (graphics, sounds, animations, video), the Web has become the ideal medium for publishing information on the Internet.

HTTP: Hypertext Transfer Protocol - The protocol that tells the server what to send to the client, so the client can view Web pages, FTP sites, or other areas of the net.

Links or hyperlink: is text you find on a Web site which can be "clicked on" with a mouse which in turn will take you to another Web page or a different area of the same Web page. Links are also used to load multimedia files such as AVI movies and AU sound files.

HTML: Hypertext Markup Language - The coding method used to format documents for the World Wide Web. Web pages are able to be seen due in part to HTML codes or tags as they are more commonly known, these tags are then interpreted by a Web browser (such as your Neon STB) which renders your Web page.

Hypermedia: The multimedia links on a Web page that lead to sound, graphics, video, or text resources.

Browser: A program that allows users to access documents on the World Wide Web (WWW). Browsers can be either text or graphic. They read HTML coded pages that reside on a server and interpret the coding into what we see as Web pages. The Neon STB has a built in browser.

Web site: A place on the Internet or World Wide Web. The term Web site refers to the all encompassing body of information as a whole, for a particular domain name. A place made up of Web pages. An example of a Web site would be www.disney.com. This site tells you everything about Disney. The different pages on this site are part of the site, called Web pages.

Web page or World Wide Web page: A page of information on a particular Web Site. The page could be several screen-dimension long, meaning you would need to use the Scroll button to move the web page around so that you see all the content of the page.

URL or Internet address: Describes the location and access method of a resource on the Internet, for example, the URL <http://www.neontech.com> describes the type of access method being used (http) and the server location which hosts the Web site (www.neontech.com). All Web sites have URLs. One could say a URL is what a telephone number is to a telephone or a street address is to a house. Although Web site URLs are sometimes long and hard to read let alone remember, you may want to use the Favs function which gives you the opportunity to save the location (URL) of Web sites you want to return to.

Navigate: To move around on the World Wide Web by following hypertext paths from document to document on different computers.

Surf: To browse or "look at" information on the World Wide Web by pointing and clicking and navigating in a nonlinear way (meaning anywhere you want to go at anytime).

Browse: To move through or surf the Internet or a Web site via a World Wide Web browser. A user can point and click their way around. The same as "browsing" through a store the term implies one who is "just looking".

E-mail Terms

E-mail: or Electronically transmitted messages lets you compose messages and transmit them in seconds to one or more recipients anywhere in the world.

e-mail address: A code or series of letters, numbers and/or symbols by which the Internet identifies you. An example of an e-mail address could be anywhere@anyplace.com. This weird looking address actually tells the Internet who you are and how to send you e-mail.

Mailbox: A place where your e-mail messages are stored.

General Terms

Internet or "the Net": is a system of linked computer networks, international in scope, that facilitates data communication services such as remote login, file transfer, electronic mail, and newsgroups.

Internet Service Provider or ISP: is a company or institution that allows users to connect their computer or computers to the Internet. In this case it allows your Neon STB to connect to the Internet.

Click: A common term on the World Wide Web to try and get a user to press their select button on your keyboard.

On-line: On line is the state of being connected to your Internet service provider via the phone line. It can also be used as an adjective to describe a variety of activities that you can do on the Internet, for example: online chat, online shopping, and online games.

Off-line: When your Neon STB is not connected to an ISP, it is offline.

Scroll: The act of moving around a Web page. This allows a user to see what else is on a Web page other than what appears in the initial screen.

Modem: MODulator, DEModulator - A device inside your Neon STB that allows your Neon STB to talk to other computers through a phone line. Basically, modems do for the Neon STB what a telephone does for humans.

Telephony: Telephony is the technology associated with the electronic transmission of voice, fax, or other information between distant parties using systems historically associated with the telephone, a handheld device containing both a speaker or transmitter and a receiver. Internet telephony is the use of the Internet rather than the traditional telephone company infrastructure and rate structure to exchange spoken or other telephone information. Since access to the Internet is available at local phone connection rates, an international or other long-distance call will be much less expensive than through the traditional call arrangement. This feature is currently not available for the basic package, but be sure to look for future announcement on this exciting new technology from Neon Technology, Inc.

Appendix B -- Troubleshooting

Problem	Solution
No display on the television.	<ol style="list-style-type: none"> 1. Check to make sure all wires are properly connected. Make sure that only one video connection is made, either S-Video or AV jacks, not both. 2. Check that batteries are in the remote control, and are correctly installed. Make sure you press the Power Button on the remotes. 3. Check that the television is in its proper Video mode.
Pointer does not move	<ol style="list-style-type: none"> 1. Remove any obstructing objects from the front of the Neon STB. 2. Be sure you point the front of the remote keyboard toward the front of the terminal. 3. Check batteries in the remote keyboard. Make sure it is installed properly. 4. Change to new batteries.
Pointer does not move smoothly, Keyboard typing does not work	<ol style="list-style-type: none"> 1. Make sure you are pointing your remote keyboard toward the Neon STB. 2. Change to new batteries.
On screen display "Detect Power Failure..."	<ol style="list-style-type: none"> 1. Terminal detects when it has been unplugged. If logging on for the first time, press the button marked "New Number". If Terminal has only been moved from room to room, or within an area code, press the button marked "Same Number"
No sound	<ol style="list-style-type: none"> 1. Sound is an optional connection and is not required to use the Neon STB. <p>Connect the audio wires as described in page 2.</p>

Text runs off the bottom of the screen, but can't scroll up or down

1. This issue is called "Focus".

Web pages built with frames can sometimes lose focus. Move your pointer to the portion of the screen that should scroll up or down, and press the select button. This will place the focus onto the frame, and you will be able to scroll.

Some pictures do not load.

1. Web pages with very large images, or a lot of small images push Neon STB memory limitations. Instead, Neon STB will draw a small icon in its place.

Cannot connect to the Internet

1. Make sure that you entered the right information in the Configure box on page 12.

Check the phone line is connected to both the Neon STB and a telephone outlet.

Check that an extension phone is not in use or the line will be busy.

Cannot Print

1. Check the list on page 7 to be certain that your printer is supported, and make sure the setup procedure has been followed.
2. Check all cables.

Appendix C -- Specifications

Appendix D -- ISPs

Appendix E – Quick Reference



FUNCTION DESCRIPTIONS

Pointer	In graphical user interfaces, a pointer is a small arrow or other symbol on the display screen that moves as you move the mouse. You can select commands and options by positioning the tip of the arrow over the desired choice and clicking the select button. This is seen when you surf around the web pages.
I-beam pointer	A pointer shaped like a capital I used in graphics-based text processing applications. Many desktop publishing systems and word processors use an I-beam pointer to mark blocks of text and move the insertion point. You will see this when you configure your box and write e-mail messages.
Insertion point:	In graphics-based programs, the insertion point is the point where the next characters typed from the keyboard will appear on the display screen. The insertion point is usually represented by a blinking vertical line. You can reposition the insertion point by pressing arrow keys or by moving the I-beam pointer.
Delete	The Delete key is used to remove characters and other objects. The Delete key removes the character immediately to the left of the insertion point, or the highlighted text or object.
Back	Takes you back to a web page you have previously seen.
Enter:	To choose a selection.
Favs	Displays the Favorites toolbar, where you can save and access your favorite web pages.

Find	Displays the Find toolbar, where you can search for a word or phrase on a web page or in an e-mail.
Fwd	Takes you forward to a web page you have previously seen.
Goto	Displays the Goto toolbar, where you can go directly to a page by typing in an Internet address.
Help	Displays the help page, where you can get on-line help.
Home	Takes you back to your home page.
Mail	Takes you to your mailbox, where you can send and receive e-mail.
Menu	Displays the Menu toolbar.
Mouse	To move a cursor around a web page.
Power	Turns the Internet Terminal on and off.
Print	Displays the Print toolbar, where you can print web pages.
Recent:	Displays the most recent pages viewed.
Reload	Reload the current web page.
Scroll	Scroll up and down through web content with the mouse or the arrow keys.
Scroll Up, Down	Scroll up and down through web content one page at a time.
Search	Display the search page, where you can locate information on any topic provided by the internet.
Select	To choose a selection.
Stop	Stop loading of the current web page.
Tab	Moves the insertion point to the next tab stop.
Arrows	The keyboards contain four arrow keys for moving the cursor or insertion point right, left, up, or down. When combined with the scroll button on the keyboard you can move around a web page. For example pressing and holding select button with the right arrow key move you to the right of the web page. Pressing and holding the select button with the left moves you left of the web page and so on.