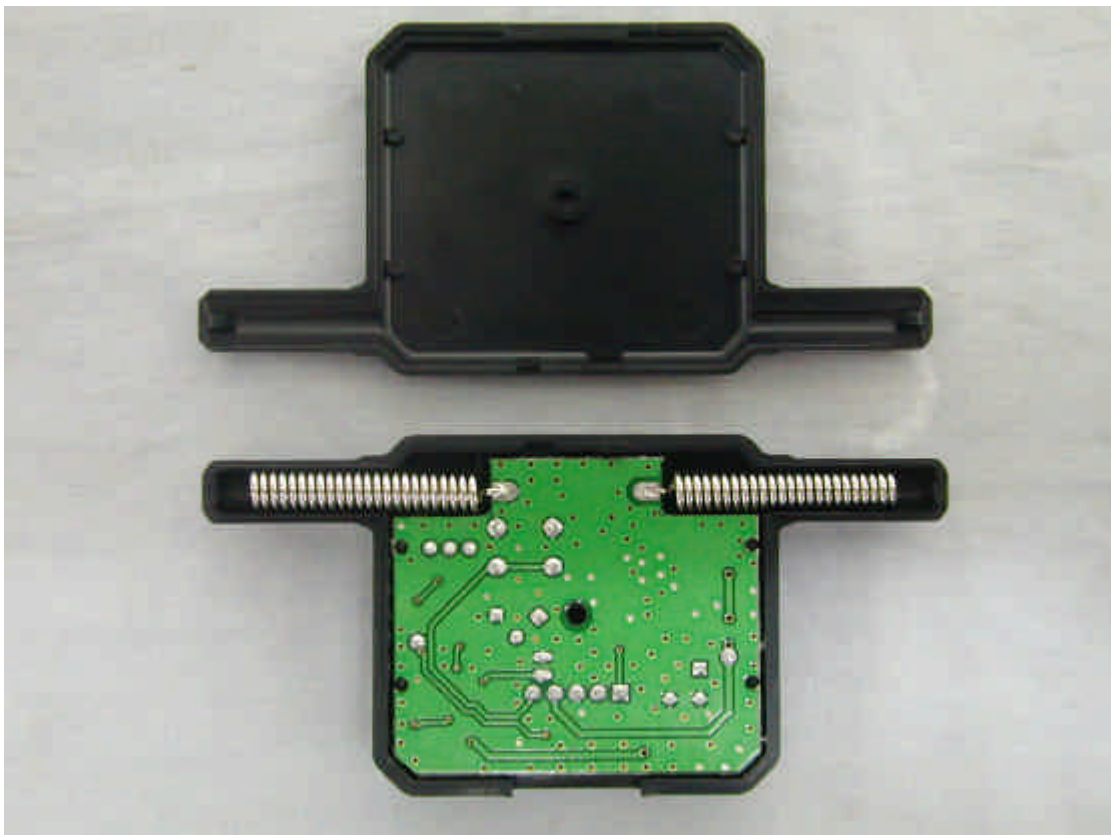


Photo # 2      Unit partially Disassembled



A photograph of a green printed circuit board (PCB) for a mobile phone. The board is populated with various electronic components. At the top, there are two large, silver, spiral-shaped antennas. Below the antennas, there are several surface-mount components, including resistors and capacitors. In the center, there is a large, circular silver component, likely a speaker or a microphone. To the right of this, there is a black integrated circuit (IC) chip. The bottom of the board features a black plastic component, possibly a SIM card slot or a connector. The PCB is marked with various labels, including "20688 R1" and "2/15/2002".

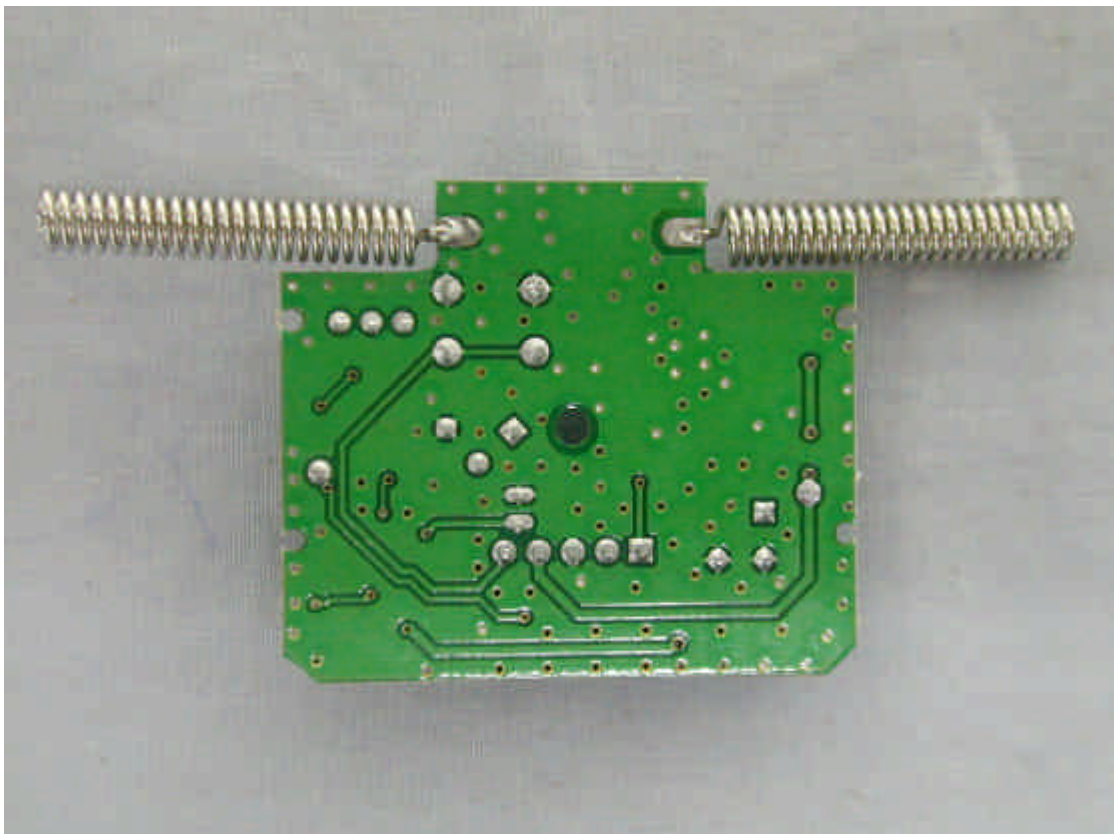


Photo # 4      Unit partially Disassembled

