

## **11.MODIFICATIO TO EUT**

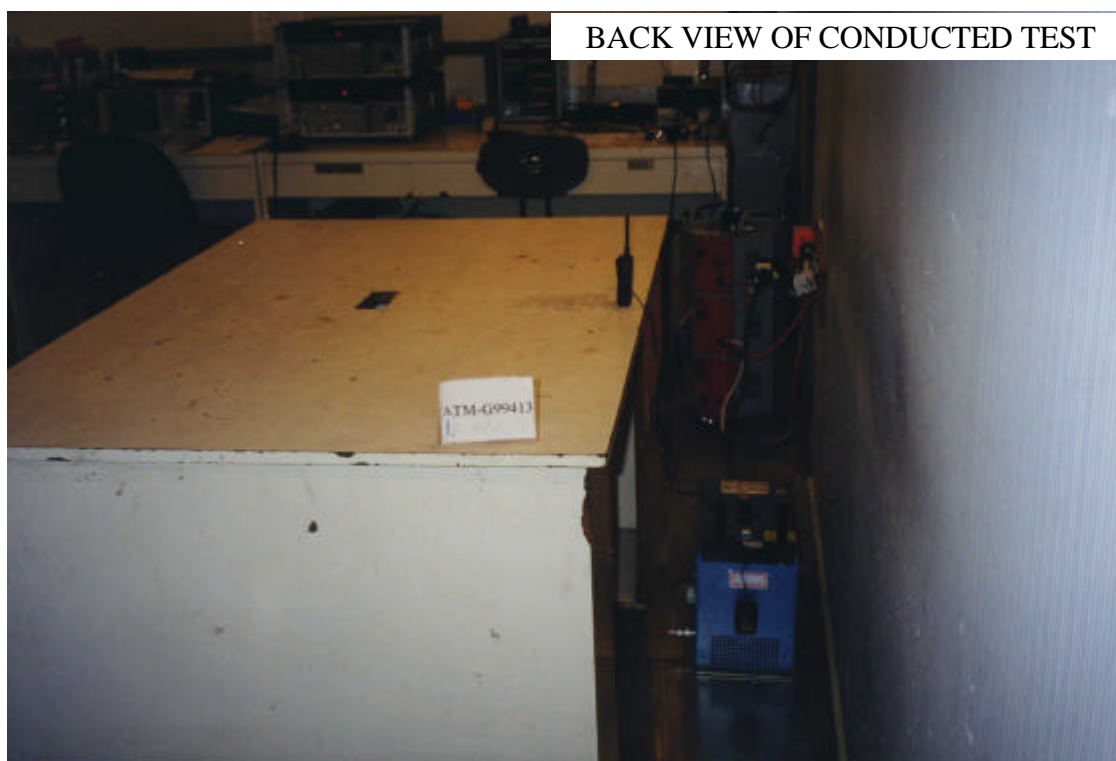
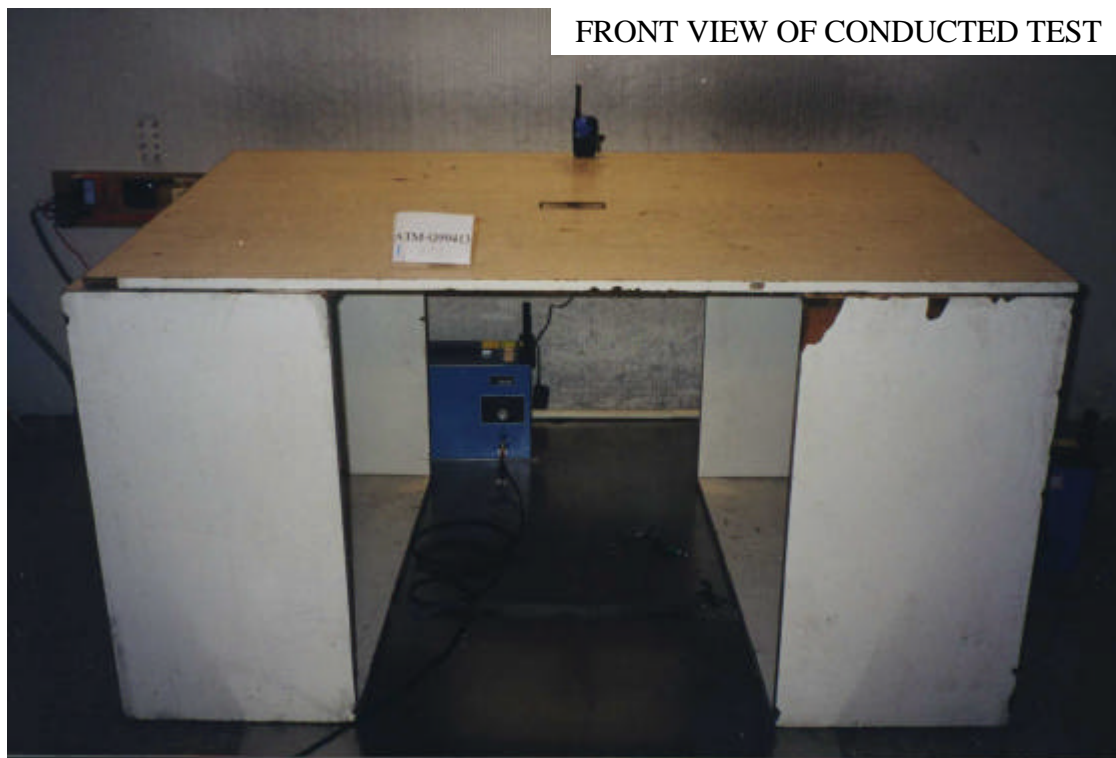
1. Added a metal shielding cover on the Q6 ~ Q8.

## **12.DEVIATION TO TEST SPECIFICATIONS**

**【NONE】**

## 13.PHOTOGRAPHS

### 13.1.Photos of Powerline Conducted Measurement

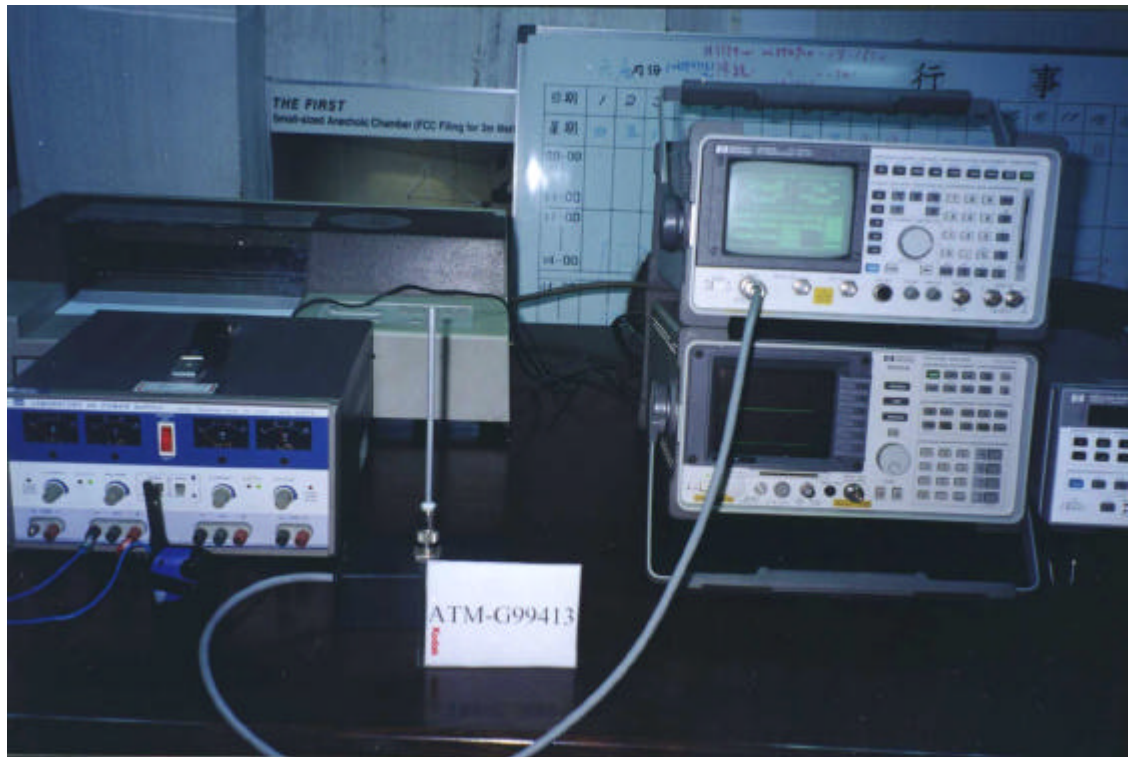


## 13.2. Photos of Frequency Stability Measurement

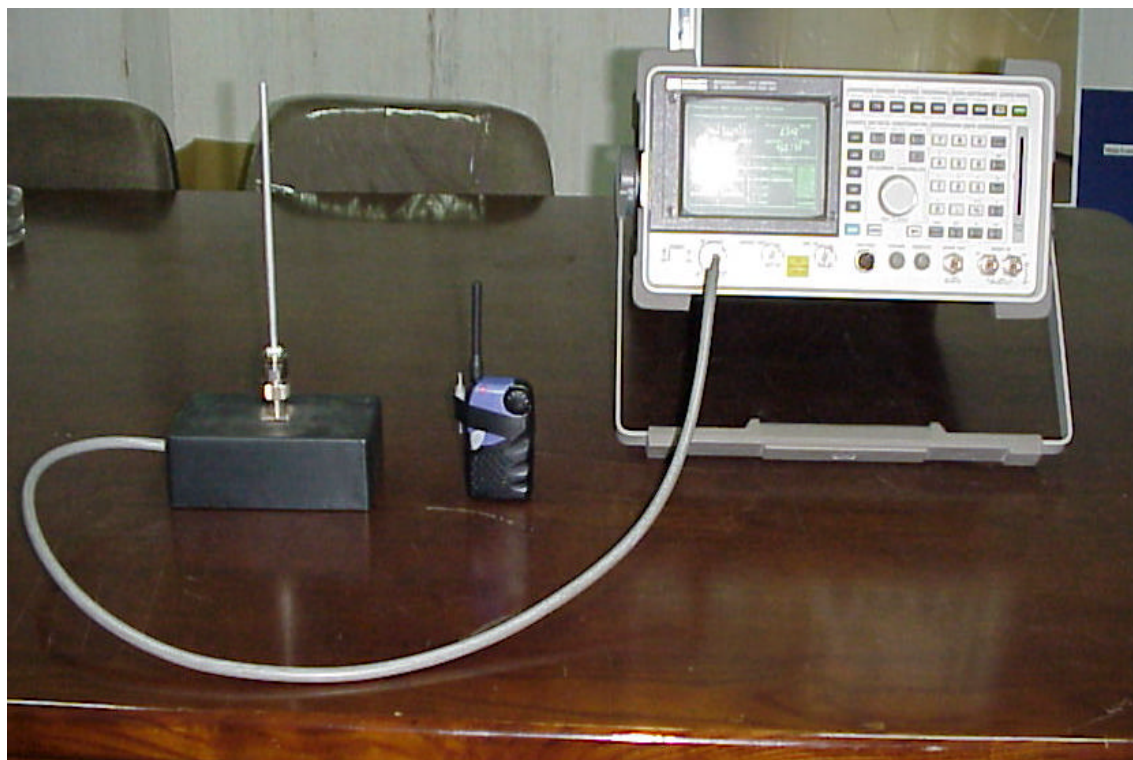
### 13.2.1. Temperature Variation Measurement



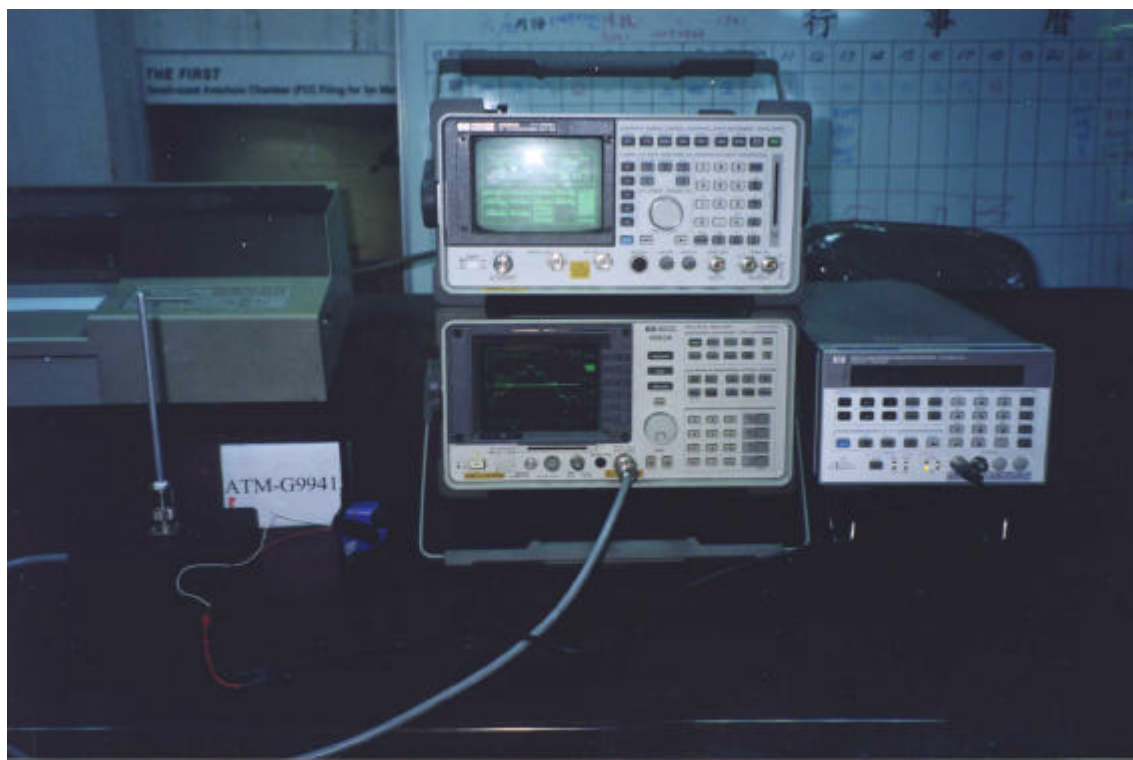
### 13.2.2. Primary Supply Voltage Variation Measurement



### 13.3.Photos of Frequencies and Channels Measurement

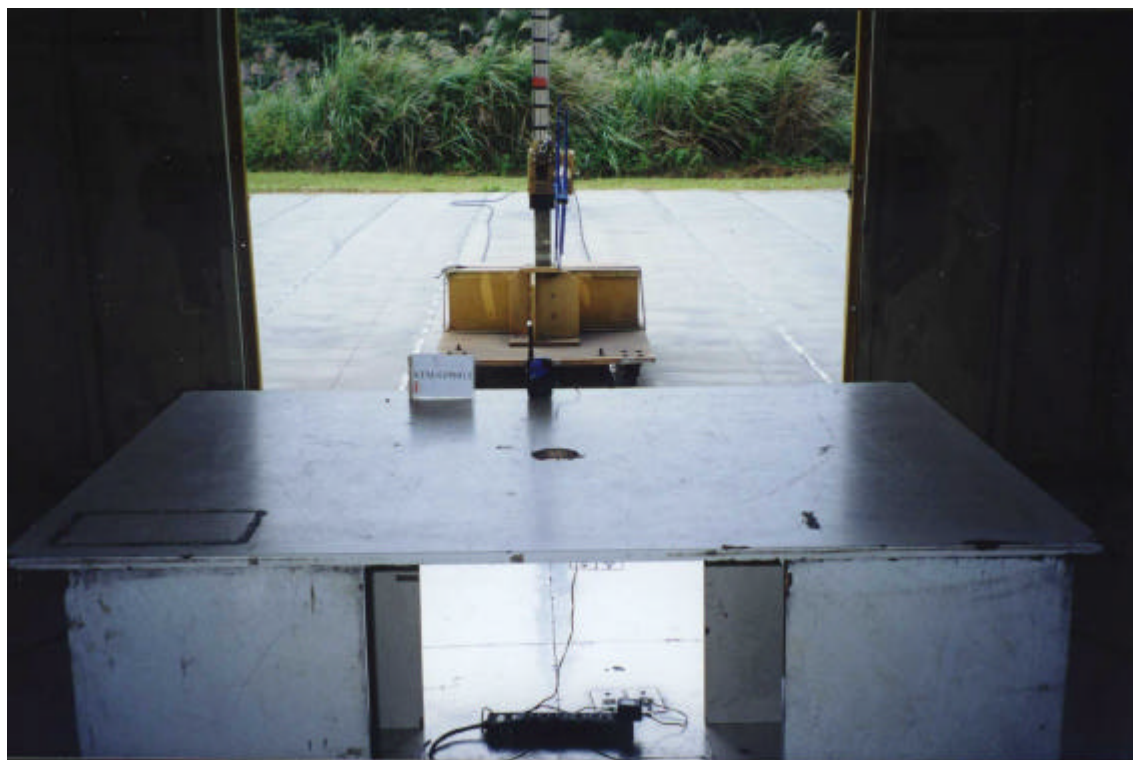


### 13.4.Photos of Emission Bandwidth Measurement

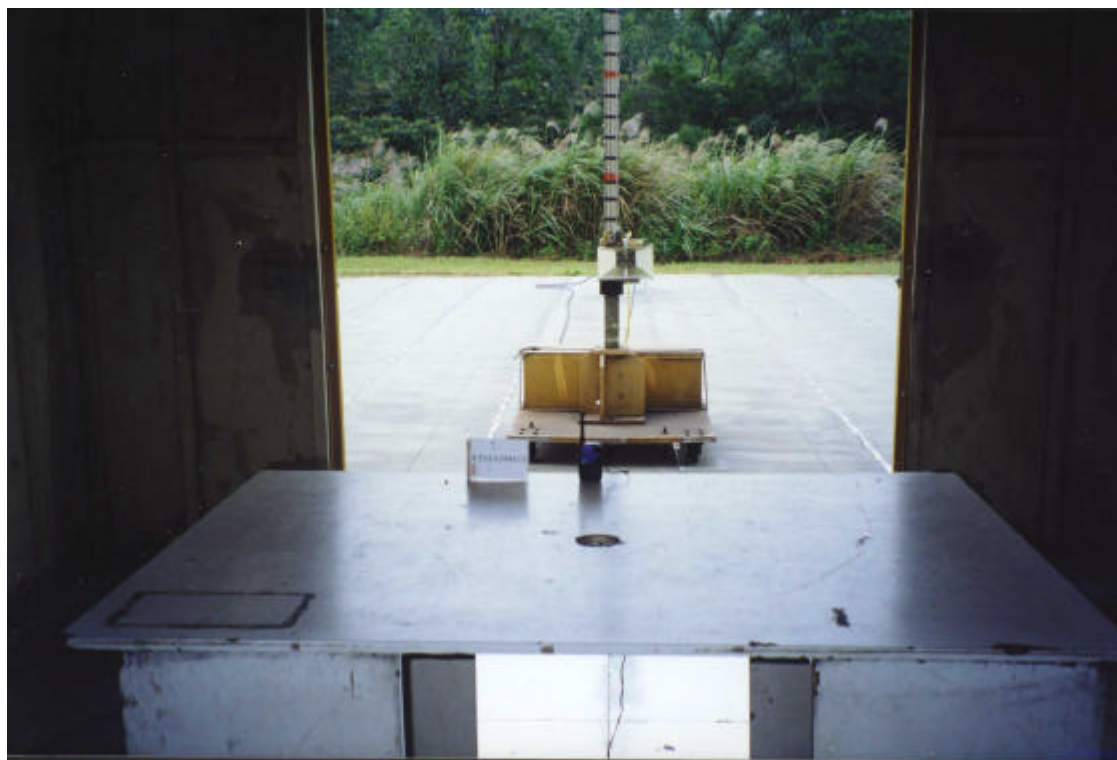


### 13.5. Photos of Radiated Emission Measurement

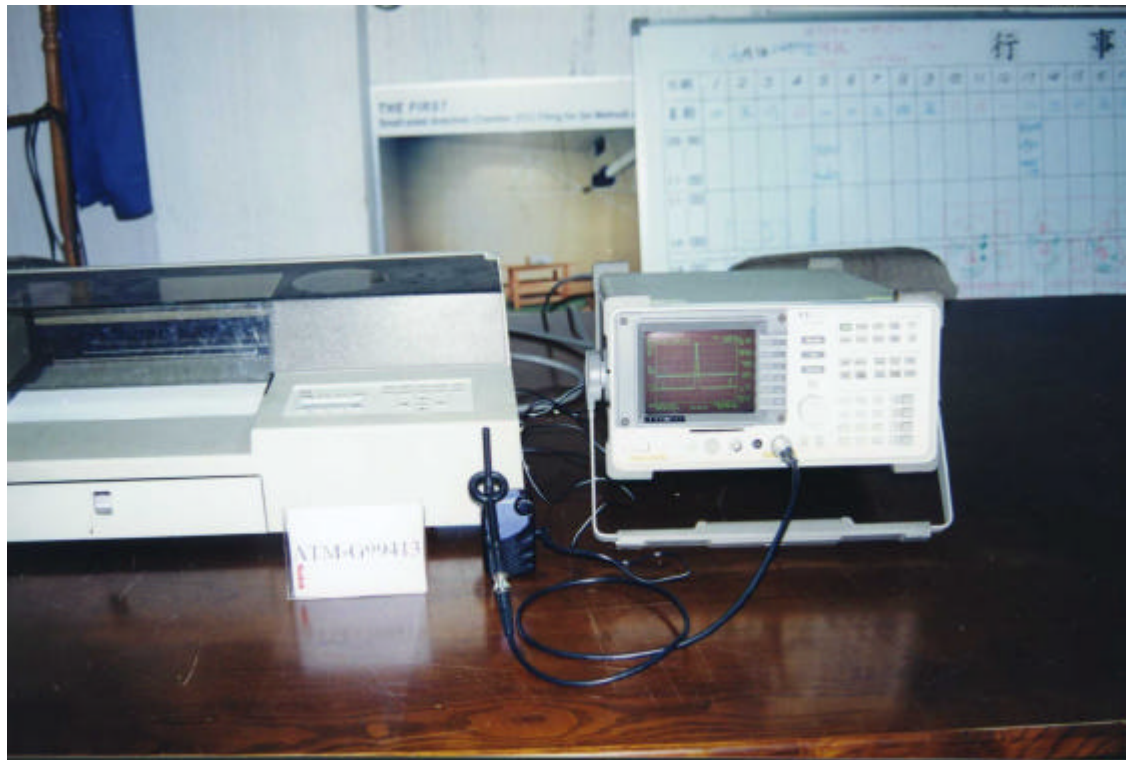
#### 13.5.1. For 30~1000MHz Frequency Range Measurement



#### 13.5.2. For 1~6GHz Frequency Range Measurement



### 13.5.3. For Channel Center Attenuation Measurement



### 13.6. Photos of Peak Frequency Measurement



### 13.7. Photos of Maximum Transmitter Power Measurement



# APPENDIX I

## (Conducted Test Data)

Test Mode: Channel 1, Receiver / Receiving Mode

