

***** USER'S MANUAL *****

FCC ID : NH3ASRMS001

Federal Communications Commission (FCC) Statement

This equipment has been tested and found to comply with the limits for a Class B digital device, pursuant to Part 15 of the FCC Rules. These limits are designed to provide reasonable protection against harmful interference in a residential installation. This equipment generates, uses and can radiate radio frequency energy and, if not installed and used in accordance with the instruction, may cause harmful interference to radio communications. However, there is no guarantee that interference will not occur in a particular installation. If this equipment does cause harmful interference to radio or television reception, which can be determined by turning the equipment off and on, the user is encouraged to try to correct the interference by one or more of the following measures:

- Reorient or relocate the receiving antenna.
- Increase the separation between the equipment and receiver.
- Connect the equipment into an outlet on a circuit different from that to which the receiver is connected.
- Consult the dealer or an experienced radio / TV technician for help.

Warning : A shielded-type power cord is required in order to meet FCC emission limits and also to prevent interference to the nearby radio and television reception. It is essential that only the supplied power cord be used.

Use only shielded cables to connect I/O devices to this equipment.

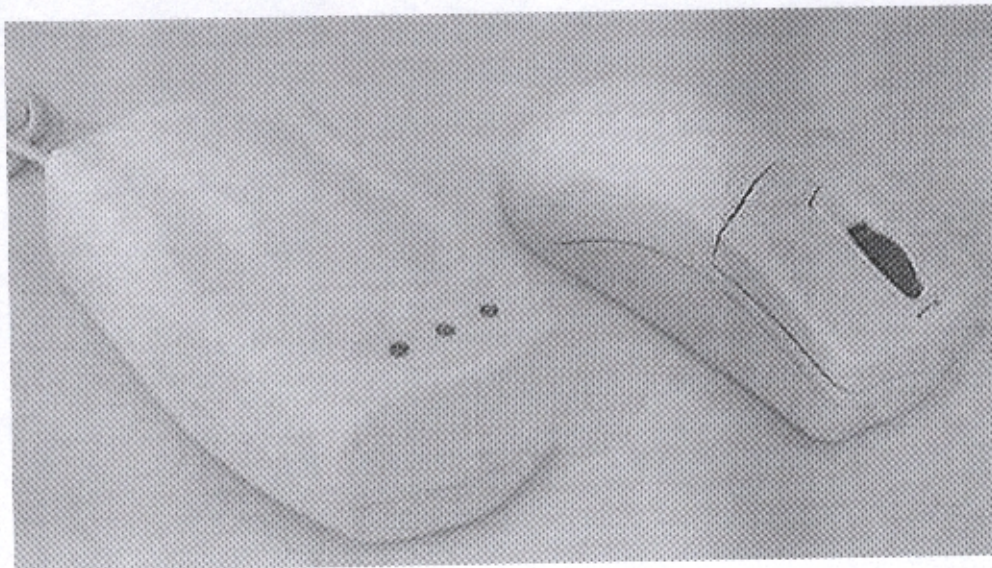
You are cautioned that changes or modifications not expressly approved by the party responsible for compliance could void your authority to operate the equipment.

ASR-MS001

RF WIRELESS MOUSE

Feature

1. 27MHz RF technology applied
2. Two channels switchable. Avoid interference while using two mice in close distance
3. Mouse chips featuring with double resolution function, enables resolution up to 800 dpi.
4. Minimum operation distance : 1 meter. Working distance depends on the operation environment. The distance will up to 1.5M in environment with less interference.
5. One AAA battery using for light weight.
6. 4 button wheel mouse. Browser button / Side button are programmable
7. Compatible with Windows 95/98/ME/2000/NT
8. PS/2, PS/2+Serial Combo versions available



Specification


Product Description	RF wireless wheel mouse
Model	ASR-MS001
Hardware resolution	800.dpi
Channel	2 channels
Operation frequency	27.01 and 27.25 MHz
Operation range	One meter minimum
Operation temperature	0 ~ 50° C
Storage temperature	-10~60°C
Power Consumption of RF module	Transmitter < 6mA, Receiver < 12mA
Power Consumption of controller	Working mode : 1.5V Waiting mode : 7~10mA
Controller power saving mode	4 stages for power saving mode : 5 sec without any operation, the mouse will go into power saving mode at 1.5mA power consumption. 0.5mA for 90 sec, 0.2mA for 600 sec and 50µA in sleeping mode.
Battery	One AAA battery for 3 months usage (1.5V)
Mechanical life	100 miles
Switch button life	100,000 times durance
Operation system	Win95/98/ME/2000
Dimension	
Mouse	122mm(L) x 61mm(W) x 36mm(H)
Receiver	105mm(L) x 67mm(W) x 30mm(H)
Weight	
Mouse	120g (with battery)
Receiver	105g

Driver Installation and hotkey function

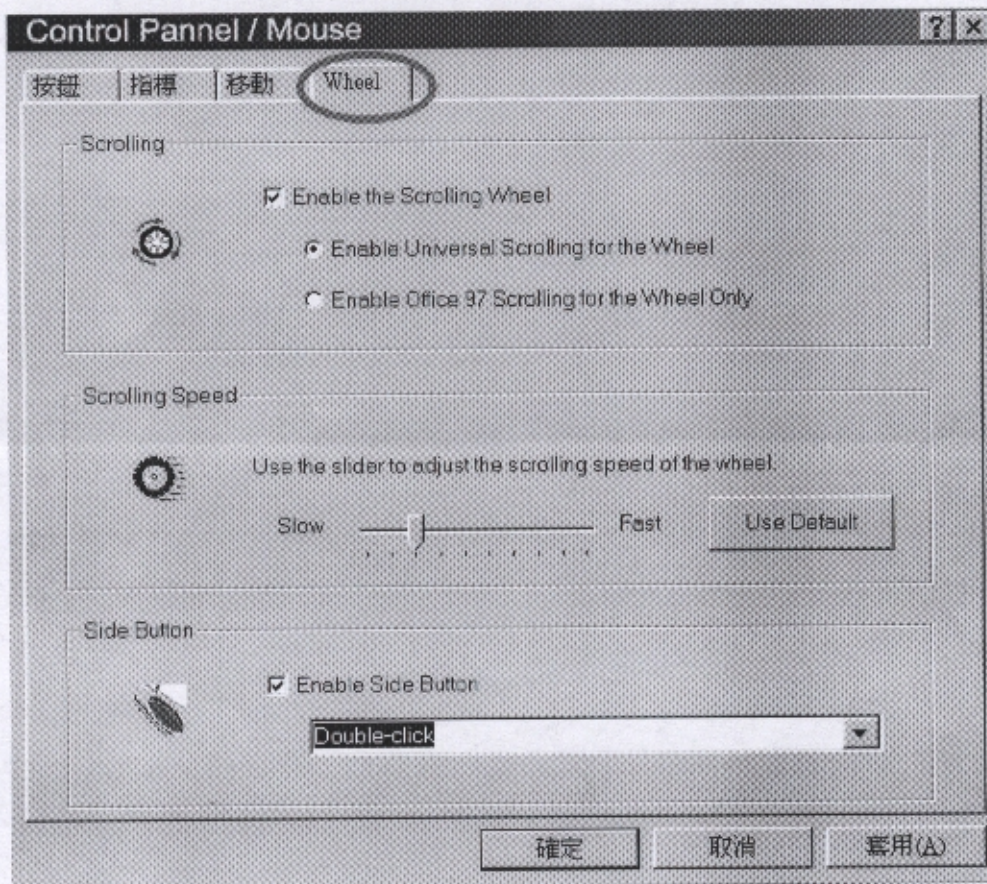
1.Install the driver by double clicking setup.exe to complete the installation.

2.The browser mouse icon will appears in the right-down of tool bar



3.Double click the mouse icon 

4.Select "Wheel" in the Menu

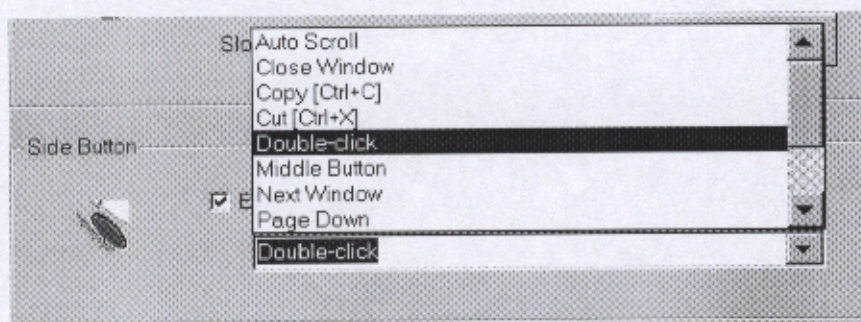


5.You can adjust the function for scrolling wheel and scrolling speed

6.Scroll button programmable

7.Total 12 sets of hotkey selectable :

Auto Scroll, Close Windows, Copy, Cut, Double Click, Middle button, Next Windows, Page Down, Page Up, Paste, Undo, Window Explorer



8.Double clicking the mouse icon to configure the buttons setting anytime.

