

5 TEST CONDITIONS AND RESULTS

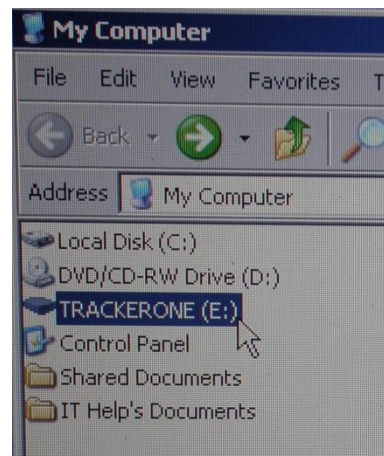
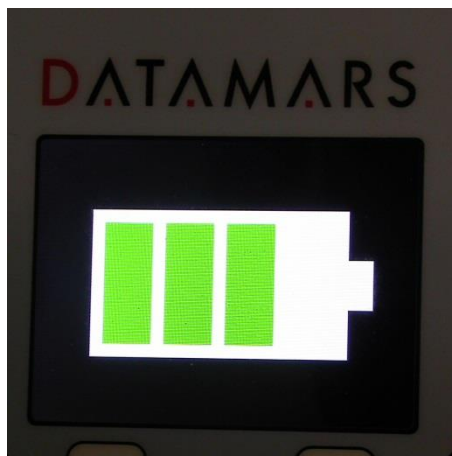
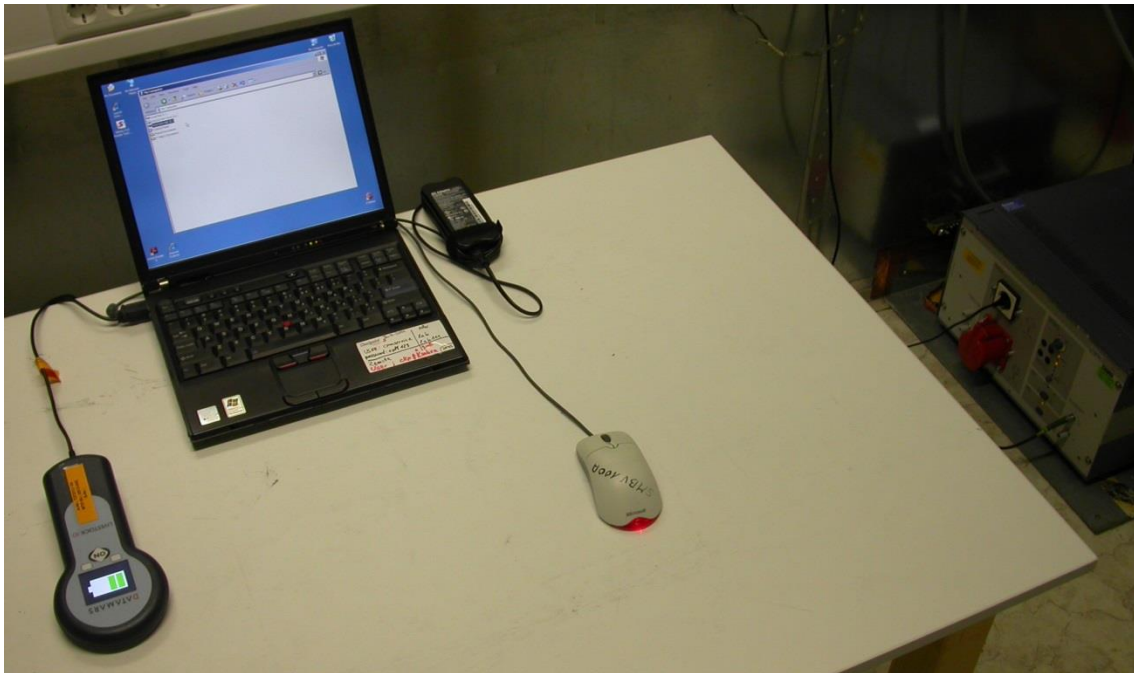
5.1 Conducted emissions

For test instruments and accessories used see section 6 Part A 4.

5.1.1 Description of the test location

Test location: Shielded Room S2

5.1.2 Photo documentation of the test set-up



5.2 Radiated emissions

For test instruments and accessories used see section 6 Part SER 1, SER 2.

5.2.1 Description of the test location

Test location: OATS1

Test distance: 3 metres

5.2.2 Photo documentation of the test set-up

