



InterLab®

EMC Measurement/Technical Report on

PCMCIA card
Magnum

Report Reference: 4_Opti_0404_GSM_FCCb

Test Laboratory (Headquarter):

7 Layers AG
Borsigstr. 11
40880 Ratingen
Germany



Note:

The following test results relate only to the devices specified in this document. This report shall not be reproduced in parts without the written approval of the testing laboratory.

7 layers AG, Borsigstrasse 11
40880 Ratingen, Germany
Phone: +49 (0) 2102 749 0
Fax: +49 (0) 2102 749 350
<http://www.7Layers.com>

Aufsichtsratsvorsitzende
Chairman of the Supervisory Board:
Michael Abels
Vorstand - Board of Directors:
Dr. Hans-Jürgen Meckelburg

Registergericht - registered in:
Düsseldorf, HRB 44096
USt-IdNr VAT Nr:
DE 203159652

Interlab is a registered trademark of 7 layers AG



Table of Contents

0	Summary.....	3
0.1	Technical Report Summary	3
0.2	Measurement Summary	4
1	Administrative Data.....	5
1.1	Testing Laboratory	5
1.2	Project Data	5
1.3	Applicant Data	5
1.4	Manufacturer Data.....	5
2	Testobject Data	6
2.1	General EUT Description	6
2.2	EUT Main components.....	7
2.3	Ancillary Equipment	7
2.4	EUT Setups	7
2.5	Operating Modes	8
3	Test Results	9
3.1	RF Power Output	9
3.2	Frequency stability	13
3.3	Spurious emissions at antenna terminals	16
3.4	Field strength of spurious radiation	20
3.5	Emission and Occupied Bandwidth	24
3.6	Mobile emissions in base frequency range	27
4	Test Equipment	29
5	Foto Report	32
6	Setup Drawings	34
7	Annex	37



0 Summary

0.1 Technical Report Summary

Type of Authorization

Certification for a GSM cellular radiotelephone device

Applicable FCC Rules

Prepared in accordance with the requirements of FCC Rules and Regulations as listed in 47 CFR Ch.1 Parts 0 to 19 and Parts 20 to 69 (10-1-01 Edition). The following subparts are applicable to the results in this test report.

Part 2

Subpart J - Equipment Authorization Procedures, Certification

- § 2.1046 Measurement required: RF power output
- § 2.1049 Measurement required: Occupied bandwidth
- § 2.1051 Measurement required: Spurious emissions at antenna terminals
- § 2.1053 Measurement required: Field strength of spurious emission
- § 2.1055 Measurement required: Frequency stability
- § 2.1057 Frequency spectrum to be investigated

Part 22

Subpart H – Cellular Radiotelephone Service

- § 22.355 Frequency tolerance
- § 22.913 Effective radiated power limits
- § 22.917 Emission limitations for cellular

Summary Test

The EUT complied with all performed tests as listed in chapter 0.2 Measurement Summary.

0.2 Measurement Summary

RF Power Output

The measurement was performed according to FCC §2.1046

10-01-2001

OP-Mode	Setup	Port	Final Result
op-mode 1	37s20e01	ant. Connector	passed
op-mode 2	37s20e01	ant. Connector	Passed
op-mode 3	37s20e01	ant. Connector	Passed

Frequency stability

The measurement was performed according to FCC §2.1055

10-01-2001

OP-Mode	Setup	Port	Final Result
op-mode 2	37s20e01	ant. Connector	Passed

Spurious emissions at antenna terminals

The measurement was performed according to FCC §2.1051

10-01-2001

OP-Mode	Setup	Port	Final Result
op-mode 1	37s20e01	ant. Connector	Passed
op-mode 2	37s20e01	ant. Connector	Passed
op-mode 3	37s20e01	ant. Connector	Passed

Field strength of spurious radiation

The measurement was performed according to FCC §2.1053

10-01-2001

OP-Mode	Setup	Port	Final Result
op-mode 1	37s20a01	Enclosure	Passed
op-mode 2	37s20a01	Enclosure	Passed
op-mode 3	37s20a01	Enclosure	Passed

Emission and Occupied Bandwidth

The measurement was performed according to FCC §2.1049

10-01-2001

OP-Mode	Setup	Port	Final Result
op-mode 1	37s20e01	ant. Connector	Passed
op-mode 2	37s20e01	ant. Connector	Passed
op-mode 3	37s20e01	ant. Connector	Passed

Mobile emissions in base frequency range

The measurement was performed according to FCC §22.917

10-01-2001

OP-Mode	Setup	Port	Final Result
op-mode 1	37s20e02	ant. Connector	Passed
op-mode 2	37s20e02	ant. Connector	Passed
op-mode 3	37s20e02	ant. Connector	Passed

Responsible for
Accreditation Scope: _____

Responsible
for Test Report: _____



1 Administrative Data

1.1 Testing Laboratory

Company Name: 7 Layers AG
Address Borsigstr. 11
40880 Ratingen
Germany

This facility has been fully described in a report submitted to the FCC and accepted under the registration number 96716 .

The test facility is also accredited by the following accreditation organisation:
- Deutscher Akkreditierungs Rat DAR-Registration no. TTI-P-G 178/99

Responsible for Accreditation Scope: Dipl.-Ing. Bernhard Retka
Dipl.-Ing. Arndt Stöcker
Dipl.-Ing. Thomas Hoell

1.2 Project Data

Responsible for testing and report: Dipl.-Ing. Thomas Hoell
Receipt of EUT: 2004-09-15
Date of Test(s): 2004-09-16 to 2004-09-28
Date of Report: 2004-10-29

1.3 Applicant Data

Company Name: Option International NV SA
Address: Kolonel Begaultlaan 45
3012 Leuven
Belgium
Contact Person: Mr. Stefan Lodeweyckx

1.4 Manufacturer Data

Company Name: please see applicant data
Address:

Contact Person:

2 Testobject Data

2.1 General EUT Description

Equipment under	PCMCIA card
Type Designation:	Magnum
Kind of Device:	GSM 850/900/1800/1900
(optional)	
Voltage Type:	DC
Nominal Voltage:	3,5 V
Maximum Voltage:	3,5 V
Minimum Voltage:	3,15 V

General product description:

The Equipment Under Test (EUT) is a GSM 850/900/1800 / PCS 1900 PCMCIA card. In GSM 850 mode the card operates in channel blocks A and B from 824,2 MHz (lowest channel = 128) to 848,8 MHz (highest channel = 251).

The EUT provides the following ports:

Ports

ant. connector (GSM)
enclosure
PCMCIA connection

The main components of the EUT are listed and described in Chapter 2.2



2.2 EUT Main components

Type, S/N, Short Descriptions etc. used in this Test Report

Short Description	Equipment under Test	Type Designation	Serial No.	HW Status	SW Status	Date of Receipt
EUT A (37020e01)	PCMCIA card	Magnum	none	v.1.0.0	v.1.0.0	2004-09-15
EUT A is equipped with an additional temporary SMA antenna connector.						
EUT B (37020a01)	PCMCIA card	Magnum	none	v.1.0.0	v.1.0.0	2004-09-15
EUT C (37020e02)	PCMCIA card	Magnum	none	v.1.0.0	v.2.0.0	2004-09-15
EUT C is equipped with an additional temporary SMA antenna connector.						

NOTE: The short description is used to simplify the identification of the EUT in this test report.

2.3 Ancillary Equipment

For the purposes of this test report, ancillary equipment is defined as equipment which is used in conjunction with the EUT to provide operational and control features to the EUT. It is necessary to configure the system in a typical fashion, as a customer would normally use it. But nevertheless Ancillary Equipment can influence the test results.

Short Description	Equipment under Test	Type Designation	HW Status	SW Status	Serial no.	FCC ID
AE 1	Daantje cradle	PCMCIA host adapter	V1.0	-	-	-
AE 2	IBM Thinkpad	PC (Laptop)	-	-	-	-

2.4 EUT Setups

This chapter describes the combination of EUT's and ancillary equipment used for testing.

Setup No.	Combination of EUTs	Description
37s20a01	EUT B + AE 2	PC Card + PC, used for radiated measurements
37s20e01	EUT A + AE 1	PC Card + host adapter, used for conducted measurements
37s20e02	EUT C + AE 1	PC Card + host adapter, used for conducted measurements



2.5 Operating Modes

This chapter describes the operating modes of the EUT's used for testing.

Op. Mode	Description of Operating Modes	Remarks
op-mode 1	Call established on Traffic Channel (TCH) 128, Carrier Frequency 824,2 MHz	128 is the lowest channel
op-mode 2	Call established on Traffic Channel (TCH) 190, Carrier Frequency 836,6 MHz	190 is a mid channel of the full GSM band
op-mode 3	Call established on Traffic Channel (TCH) 251, Carrier Frequency 848,8 MHz	251 is the highest channel



3 Test Results

3.1 RF Power Output

Standard FCC Part 22, 10-01-2001
Subpart H

The test was performed according to: FCC §2.1046, 10-01-2001

3.1.1 Test Description

- 1) The EUT was coupled to the R&S Spectrum Analyser and the R&S CMD55 Digital Communication Tester through a Power Divider. Refer to chapter "Setup Drawings".
- 2) The total insertion losses for RF Path 1 and RF Path 2 were measured. The values were used to correct the readings from the R&S Spectrum Analyser and the R&S CMD55 Digital Communication Tester.
- 3) A speech call was established on a Traffic Channel (TCH) between the EUT and the base station simulator (R&S CMD55 Digital Communication Tester).
Important Settings:
 - Discontinuous Transmission: OFF
 - Modulation Signal: PSR16-1 (Pseudo Random Sequence)
 - Output Power: Varied during measurements
 - Channel (Frequency): Varied during measurements
- 4) The transmitted power of the EUT was recorded for all possible power control level by using an internal measurement function of the CMD55.
- 5) During this test the Spectrum Analyser was only used to check if the results are comprehensible.

3.1.2 Test Requirements / Limits

§2.1046 Measurements Required: RF Power Output

(a) For transmitters other than single sideband, independent sideband and controlled carrier radiotelephone, power output shall be measured at the RF output terminals when the transmitter is adjusted in accordance with the tune-up procedure to give the values of current and voltage on the circuit elements specified in § 2.1033(c)(8). The electrical characteristics of the output terminals when this test is made shall be stated.

§22.913 Effective radiated power limits

(a) Maximum ERP. ... The ERP of mobile transmitters and auxiliary test transmitters must not exceed 7 Watts.



3.1.3 Test Protocol

Temperature: 24 °C
 Air Pressure: 1020 hPa
 Humidity: 49 %

Op. Mode	Setup	Port
op-mode 1	37s20e01	ant. connector

Power Control Level	Output power Nominal (dBm)	Output power Measured (dBm)	Difference dB
5	33	32,1	0,9
6	31	30,5	0,5
7	29	29,1	0,1
8	27	27,0	0,0
9	25	25,2	0,2
10	23	23,1	0,1
11	21	20,9	0,1
12	19	18,8	0,2
13	17	16,8	0,2
14	15	14,9	0,1
15	13	13,4	0,4
16	11	12,1	1,1
17	9	10,5	1,5
18	7	8,6	1,6
19	5	7,3	2,3

Remark: The EIRP including antenna gain (-5.0 dBi) is 27,1 dBm.



Temperature: 24 °C
Air Pressure: 1020 hPa
Humidity: 49 %

Op. Mode	Setup	Port
op-mode 2	37s20e01	ant. connector

Power Control Level	Output power Nominal (dBm)	Output power Measured (dBm)	Difference dB
5	33	32,3	0,7
6	31	30,8	0,2
7	29	29,4	0,4
8	27	27,3	0,3
9	25	25,5	0,5
10	23	23,3	0,3
11	21	21,2	0,2
12	19	19,1	0,1
13	17	17,1	0,1
14	15	15,1	0,1
15	13	13,5	0,5
16	11	12,2	1,2
17	9	10,7	1,7
18	7	8,8	1,8
19	5	7,5	2,5

Remark: The EIRP including antenna gain (-5.0 dBi) is 27,3 dBm.



Temperature: 24 °C
 Air Pressure: 1020 hPa
 Humidity: 49 %

Op. Mode	Setup	Port
op-mode 3	37s20e01	ant. connector

Power Control Level	Output power Nominal (dBm)	Output power Measured (dBm)	Difference dB
5	33	32,5	0,5
6	31	31,0	0,0
7	29	29,6	0,6
8	27	27,6	0,6
9	25	25,7	0,7
10	23	23,6	0,6
11	21	21,4	0,4
12	19	19,3	0,3
13	17	17,2	0,2
14	15	15,2	0,2
15	13	13,6	0,6
16	11	12,2	1,2
17	9	10,7	1,7
18	7	8,7	1,7
19	5	7,5	2,5

Remark: The EIRP including antenna gain (-5.0 dBi) is 27,5 dBm.

3.1.4 Test result: RF Power Output

FCC Part 22, Subpart H	Op. Mode	Setup	Port	Result
	op-mode 1	37s20e01	ant. connector	passed
	op-mode 2	37s20e01	ant. connector	passed
	op-mode 3	37s20e01	ant. connector	passed



3.2 Frequency stability

Standard FCC Part 22, 10-01-2001
 Subpart H

The test was performed according to FCC §2.1055, 10-01-2001

3.2.1 Test Description

- 1) The EUT was placed inside the climatic chamber.
- 2) The EUT was coupled to the R&S CMD55 Digital Communication Tester.
Refer to chapter "Setup Drawings".
- 3) The climatic chamber was cycled down/up to a certain temperature, starting with -30°C.
- 4) After the temperature was stabilized (at least one hour) the EUT was switched on and a speech call was established on a Traffic Channel (TCH) between the EUT and the base station simulator (R&S CMD55 Digital Communication Tester).
Important Settings:
 - Discontinuous Transmission: OFF
 - Modulation Signal: PSR16-1 (Pseudo Random Sequence)
 - Output Power: Maximum
 - Channel : 190 [836,6 MHz]
- 5) The frequency error of the EUT were recorded by using an internal measurement function of the CMD55 immediately after the call was established, five minutes after the call was established and ten minutes after the call was established.
- 6) This measurement procedure was performed for all combinations of voltage (low, nominal, high) and temperature (from -30°C to +50°C in increments of 10°C).

3.2.2 Test Requirements / Limits

§2.1055 Measurements required: Frequency stability

(a) The frequency stability shall be measured with variation of ambient temperature as follows:

- (1) From -30° to +50° centigrade for all equipment except that specified in paragraphs (a) (2) and (3) of this section.
- (b) Frequency measurements shall be made at the extremes of the specified temperature range and at intervals of not more than 10° centigrade through the range. A period of time sufficient to stabilize all of the components of the oscillator circuit at each temperature level shall be allowed prior to frequency measurement. The short term transient effects on the frequency of the transmitter due to keying (except for broadcast transmitters) and any heating element cycling normally occurring at each ambient temperature level also shall be shown. Only the portion or portions of the transmitter containing the frequency determining and stabilizing circuitry need be subjected to the temperature variation test.



(d) The frequency stability shall be measured with variation of primary supply voltage as follows:

(1) Vary primary supply voltage from 85 to 115 percent of the nominal value for other than hand carried battery equipment.

(2) For hand carried, battery powered equipment, reduce primary supply voltage to the battery operating end point which shall be specified by the manufacturer.

(3) The supply voltage shall be measured at the input to the cable normally provided with the equipment, or at the power supply terminals if cables are not normally provided. Effects on frequency of transmitter keying (except for broadcast transmitters) and any heating element cycling at the nominal supply voltage and at each extreme also shall be shown.

§22.355 Frequency tolerance

...the carrier frequency of each transmitter in the Public Mobile Service must be maintained within the tolerances given in table C-1 of this section.

Table C-1.- Frequency Tolerance for Transmitters in the Public Mobile Services

Frequency range (ppm)	Base, fixed (ppm)	Mobile up to 3 watts (ppm)	Mobile above 3 watts (ppm)
25 to 50	20,0	20,0	50,0
50 to 450	5,0	5,0	50,0
450 to 512	2,5	5,0	5,0
821 to 896	1,5	2,5	2,5
928 to 929	5,0	n/a	n/a
929 to 960	1,5	n/a	n/a
2110 to 2220	10,0	n/a	n/a

For the mid channel (836,6 MHz) the 2ppm frequency tolerance is calculated to 2,091 kHz.

3.2.3 Test Protocol

Temperature: 24 °C
Air Pressure: 1020 hPa
Humidity: 49 %

Op. Mode	Setup	Port
op-mode 2	37s20e01	ant. connector

		Minimum Voltage / V		Normal Voltage / V		Maximum Voltage / V	
		3,15 V		3,5 V		3,5 V	
Temp. °C	Duration min	Freq. error Average (Hz)	Freq. error Max. (Hz)	Freq. error Average (Hz)	Freq. error Max. (Hz)	Freq. error Average (Hz)	Freq. error Max. (Hz)
-10	0	-17	-30	-18	-25		
-10	5	-19	-33	-19	-37		
-10	10	-17	-24	-16	-33		
0	0	-19	-32	-18	-28		
0	5	-14	-19	-14	-32		
0	10	-15	-34	-14	-29		
10	0	-13	-27	-20	-26		
10	5	-11	-16	-11	-30		
10	10	-16	-23	-17	-22		
20	0	-17	-22	-16	-22		
20	5	-17	-23	-12	-28		
20	10	-15	-25	-15	-22		
30	0	-13	-30	-18	-23		
30	5	-17	-23	-17	-26		
30	10	-13	-31	-15	-29		
40	0	-11	-29	-16	-21		
40	5	-10	-28	-14	-19		
40	10	-11	-33	-10	-17		
50	0	-14	-28	-15	-28		
50	5	-18	-26	-14	-32		
50	10	-19	-25	-17	-23		

Remark: The applicant declared that normal = maximum voltage. The EUT does not operate at -20 and -30 °C.

3.2.4 Test result: Frequency stability

FCC Part 22, Subpart H	Op. Mode	Setup	Port	Result
	op-mode 2	37s20e01	ant. connector	passed

3.3 Spurious emissions at antenna terminals

Standard FCC Part 22, 10-01-2001
Subpart H

The test was performed according to FCC §2.1051, 10-01-2001

3.3.1 Test Description

1) The EUT was coupled to the R&S Spectrum Analyser and the R&S CMD55 Digital Communication Tester through a Power Divider. Refer to chapter "Setup Drawings".

2) The total insertion losses for RF Path 1 and RF Path 2 were measured. The values were used to correct the readings from the R&S Spectrum Analyser and the R&S CMD55 Digital Communication Tester.

3) A speech call was established on a Traffic Channel (TCH) between the EUT and the base station simulator (R&S CMD55 Digital Communication Tester).

Important Settings:

- Discontinuous Transmission: OFF
- Modulation Signal: PSR16-1 (Pseudo Random Sequence)
- Output Power: Maximum
- Channel : Varied during measurements
(lowest channel: 128, mid channel: 190 and highest channel: 251)

4) Important Analyser Settings

- [Resolution Bandwidth / Video Bandwidth]:
 - a) [3 kHz / 10 kHz] in the Span of 1 MHz directly below and above the GSM-Band,
 - b) [10 kHz / 30 kHz] in case the curve of the analyser IF-Filter leads to an exceeding of the limit, in this case a worst case correction factor of 20 dB (1 MHz -> 10 kHz) was used
 - c) [1 MHz / 3 MHz] otherwise
- Sweep Time: Calculated by using a formula given in the Product Standard "GSM 11.10-1 edition 4" for spurious emissions measurements (depending on the transmitting signal, the span and the resolution bandwidth)

5) The spurious emissions (peak) were measured in the frequency range from 9 kHz to 10 GHz (up to the 10th harmonic) during the call is established on the lowest channel (128), mid channel (190) and on the highest channel (251).

3.3.2 Test Requirements / Limits

§ 2.1051 Spurious emissions at antenna terminals

The radio frequency voltage or powers generated within the equipment and appearing on a spurious frequency shall be checked at the equipment output terminals when properly loaded with a suitable artificial antenna. Curves or equivalent data shall show the magnitude of each harmonic and other spurious emission that can be detected when the equipment is operated under the conditions specified in Sec. 2.1049 as appropriate. The magnitude of spurious emissions which are attenuated more than 20 dB below the permissible value need not be specified.



§ 2.1057 Frequency spectrum to be investigated.

(a) In all of the measurements set forth in Secs. 2.1051 and 2.1053, the spectrum shall be investigated from the lowest radio frequency signal generated in the equipment, without going below 9 kHz, up to at least the frequency shown below:

(1) If the equipment operates below 10 GHz: to the tenth harmonic of the highest fundamental frequency or to 40 GHz, whichever is lower.

(b) Particular attention should be paid to harmonics and subharmonics of the carrier frequency as well as to those frequencies removed from the carrier by multiples of the oscillator frequency. Radiation at the frequencies of multiplier stages should also be checked.

(c) The amplitude of spurious emissions which are attenuated more than 20 dB below the permissible value need not be reported.

(d) Unless otherwise specified, measurements above 40 GHz shall be performed using a minimum resolution bandwidth of 1 MHz.

§ 22.917 Emission limitations for cellular

(e) Out of band emissions. The mean power of emissions must be attenuated below the mean power of the unmodulated carrier (P) on any frequency twice or more than twice the fundamental frequency by: at least $43 + 10 \log P$ dB.

3.3.3 Test Protocol

Temperature: 24 °C
Air Pressure: 1020 hPa
Humidity: 49 %

Op. Mode	Setup	Port
op-mode 1	37s20e01	ant. connector

Frequency MHz	Bandwidth kHz	Measured Level dBm	Limit dBm
824	3,00	-13,67	-13,00
869	1000,00	-34,42	-13,00
1674	1000,00	-29,68	-13,00
2474	1000,00	-37,08	-13,00

Remark: No (further) spurious emissions were found in the range 20 dB below the limit.

Temperature: 24 °C
Air Pressure: 1020 hPa
Humidity: 49 %

Op. Mode	Setup	Port
op-mode 2	37s20e01	ant. connector

Frequency MHz	Bandwidth kHz	Measured Level dBm	Limit dBm
880	1000,00	-34,56	-13,00
1673	1000,00	-29,92	-13,00
2511	1000,00	-34,69	-13,00

Remark: No (further) spurious emissions were found in the range 20 dB below the limit.

Temperature: 24 °C
Air Pressure: 1020 hPa
Humidity: 49 %

Op. Mode	Setup	Port
op-mode 3	37s20e01	ant. connector

Frequency MHz	Bandwidth kHz	Measured Level dBm	Limit dBm
849	3,00	-13,49	-13,00
892	1000,00	-33,83	-13,00
1697	1000,00	-31,37	-13,00
2549	1000,00	-32,04	-13,00

Remark: No (further) spurious emissions were found in the range 20 dB below the limit.



3.3.4 Test result: Spurious emissions at antenna terminals

FCC Part 22, Subpart H	Op. Mode	Setup	Port	Result
	op-mode 1	37s20e01	ant. connector	passed
	op-mode 2	37s20e01	ant. connector	passed
	op-mode 3	37s20e01	ant. connector	passed

3.4 Field strength of spurious radiation

Standard FCC Part 22, 10-01-2001
 Subpart H

The test was performed according to: FCC §2.1053, 10-01-2001

3.4.1 Test Description

1) The EUT was placed inside a anechoic chamber. Refer to chapter "Setup Drawings". The EUT was coupled to the R&S CMD55 Digital Communication Tester which was located outside the chamber via coaxial cable.

2) A speech call was established on a Traffic Channel (TCH) between the EUT and the base station simulator (R&S CMD55 Digital Communication Tester).

Important Settings:

- Discontinuous Transmission: OFF
- Modulation Signal: PSR16-1 (Pseudo Random Sequence)
- Output Power: Maximum
- Channel : Varied during measurements
(lowest channel: 128, mid channel: 190 and highest channel: 251)

3) A pre-calibration procedure is used so that the readings from the spectrum analyser are corrected and represent directly the equivalent radiated power (related to a $\lambda/2$ dipole).

4) All spurious radiation measurements were made with spectrum analyser and the appropriate calibrated antennas for the frequency range of 30 MHz to 10 GHz (up to the 10th harmonic of the transmit frequency).

5) Important Analyser Settings

- [Resolution Bandwidth / Video Bandwidth]:
 - a) [3 kHz / 10 kHz] in the Span of 1 MHz directly below and above the GSM-Band,
 - b) [10 kHz / 30 kHz] in case the curve of the analyser IF-Filter leads to an exceeding of the limit, in this case a worst case correction factor of 20 dB (1 MHz -> 10 kHz) was used
 - c) [1 MHz / 3 MHz] otherwise
- Sweep Time: Calculated by using a formula given in the Product Standard "GSM 11.10-1 edition 4" for spurious emissions measurements (depending on the transmitting signal, the span and the resolution bandwidth)

6) The spurious emissions (peak) were measured in both vertical and horizontal antenna polarisation during the call is established on the lowest channel (128), mid channel (190) and on the highest channel (251).

3.4.2 Test Requirements / Limits

§ 2.1053 Measurements required: Field strength of spurious radiation.

Measurements shall be made to detect spurious emissions that may be radiated directly from the cabinet, control circuits, power leads, or intermediate circuit



elements under normal conditions of installation and operation. Curves or equivalent data shall be supplied showing the magnitude of each harmonic and other spurious emission. For this test, single sideband, independent sideband, and controlled carrier transmitters shall be modulated under the conditions specified in paragraph (c) of Sec. 2.1049, as appropriate. For equipment operating on frequencies below 890 MHz, an open field test is normally required, with the measuring instrument antenna located in the far-field at all test frequencies. In the event it is either impractical or impossible to make open field measurements (e.g. a broadcast transmitter installed in a building) measurements will be accepted of the equipment as installed. Such measurements must be accompanied by a description of the site where the measurements were made showing the location of any possible source of reflections which might distort the field strength measurements. Information submitted shall include the relative radiated power of each spurious emission with reference to the rated power output of the transmitter, assuming all emissions are radiated from halfwave dipole antennas.

(b) The measurements specified in paragraph (a) of this section shall be made for the following equipment:

(2) All equipment operating on frequencies higher than 25 MHz.

§ 2.1057 Frequency spectrum to be investigated.

(a) In all of the measurements set forth in Secs. 2.1051 and 2.1053, the spectrum shall be investigated from the lowest radio frequency signal generated in the equipment, without going below 9 kHz, up to at least the frequency shown below:

(1) If the equipment operates below 10 GHz: to the tenth harmonic of the highest fundamental frequency or to 40 GHz, whichever is lower.

(b) Particular attention should be paid to harmonics and subharmonics of the carrier frequency as well as to those frequencies removed from the carrier by multiples of the oscillator frequency. Radiation at the frequencies of multiplier stages should also be checked.

(c) The amplitude of spurious emissions which are attenuated more than 20 dB below the permissible value need not be reported.

(d) Unless otherwise specified, measurements above 40 GHz shall be performed using a minimum resolution bandwidth of 1 MHz.

§ 22.917 Emission limitations for cellular

(e) Out of band emissions. The mean power of emissions must be attenuated below the mean power of the unmodulated carrier (P) on any frequency twice or more than twice the fundamental frequency by: at least $43 + 10 \log P$ dB.

This is calculated to be -13 dBm (effective radiated power) which corresponds to 84.6 dBµV/m (field strength) in a distance of 3 m.

3.4.3 Test Protocol

Temperature: 24 °C
Air Pressure: 1020 hPa
Humidity: 49 %

Op. Mode	Setup	Port
op-mode 1	37s20a01	enclosure

Frequency MHz	Antenna Polarisation	Bandwidth kHz	Measured Level dBm	Limit dBm
824	Vertical	3,00	-31,78	-13,00
2458,5	Vertical	1000,00	-38,82	-13,00

Remark: No (further) spurious emissions were found in the range 20 dB below the limit.

Temperature: 24 °C
Air Pressure: 1020 hPa
Humidity: 49 %

Op. Mode	Setup	Port
op-mode 2	37s20a01	enclosure

Frequency MHz	Antenna Polarisation	Bandwidth kHz	Measured Level dBm	Limit dBm
2509	Vertical	1000,00	-33,84	-13,00

Remark: No (further) spurious emissions were found in the range 20 dB below the limit.



Temperature: 24 °C
Air Pressure: 1020 hPa
Humidity: 49 %

Op. Mode	Setup	Port
op-mode 3	37s20a01	enclosure

Frequency MHz	Antenna Polarisation	Bandwidth kHz	Measured Level dBm	Limit dBm
849	Horizontal	3,00	-24,09	-13,00
2542,7	Horizontal	1000,00	-36,43	-13,00

Remark: No (further) spurious emissions were found in the range 20 dB below the limit.

3.4.4 Test result: Field strength of spurious radiation

FCC Part 22, Subpart H	Op. Mode	Setup	Port	Result
	op-mode 1	37s20a01	enclosure	passed
	op-mode 2	37s20a01	enclosure	passed
	op-mode 3	37s20a01	enclosure	passed



3.5 Emission and Occupied Bandwidth

Standard FCC Part 22, 10-01-2001
 Subpart H

The test was performed according to: FCC §2.1049, 10-01-2001

3.5.1 Test Description

1) The EUT was coupled to the R&S Spectrum Analyser and the R&S CMD55 Digital Communication Tester through a Power Divider. Refer to chapter "Setup Drawings".

2) The total insertion losses for RF Path 1 and RF Path 2 were measured. The values were used to correct the readings from the R&S Spectrum Analyser and the R&S CMD55 Digital Communication Tester.

3) A speech call was established on a Traffic Channel (TCH) between the EUT and the base station simulator (R&S CMD55 Digital Communication Tester).

Important Settings:

- Discontinuous Transmission: OFF
- Modulation Signal: PSR16-1 (Pseudo Random Sequence)
- Output Power: Maximum
- Channel : Varied during measurements
(lowest channel: 512, mid channel: 661 and highest channel: 810)

4) Important Analyser Settings:

- Resolution Bandwidth: 3 kHz (1% of the manufacturers stated occupied bandwidth)
- Video Bandwidth: 10 kHz (three times the Resolution Bandwidth)
- Sweep Span: 1 MHz (at least 250% of the emission bandwidth)

5) The maximum spectral level of the modulated signal was recorded as the reference.

6) The emission bandwidth is measured as follows:

the two furthest frequencies above and below the frequency of the maximum reference level where the spectrum is -26 dB down have to be found.

7) The occupied bandwidth (99% Bandwidth) is measured as follows:

the occupied bandwidth, that is the frequency bandwidth such that, below its lower and above its upper frequency limits, the mean powers radiated are each equal to 0.5 percent of the total mean power.

3.5.2 Test Requirements / Limits

§ 2.1049 Measurements required: Occupied bandwidth

The occupied bandwidth, that is the frequency bandwidth such that, below its lower and above its upper frequency limits, the mean powers radiated are each equal to 0.5 percent of the total mean power radiated by a given emission shall be measured under the following conditions (as applicable):

(h) Transmitters employing digital modulation techniques - when modulated by an input signal such that its amplitude and symbol rate represent the maximum rated conditions under which the equipment will be operated. The signal shall be applied through any filter networks, pseudo-random generators or other devices required in normal service. Additionally, the occupied bandwidth shall be shown for operation with any devices used for modifying the spectrum when such devices are optional at the discretion of the user.

(i) Transmitters designed for other types of modulation -

3.5.3 Test Protocol

Temperature: 24 °C
Air Pressure: 1020 hPa
Humidity: 49 %

Op. Mode	Setup	Port
op-mode 1	37s20e01	ant. connector

Bandwidth kHz	Remarks
312	please see annex

Remark: The given value is the result of the 26dB bandwidth measurement.
The 99% Bandwidth is 245 kHz.

Temperature: 24 °C
Air Pressure: 1020 hPa
Humidity: 49 %

Op. Mode	Setup	Port
op-mode 2	37s20e01	ant. connector

Bandwidth kHz	Remarks
316	please see annex

Remark: The given value is the result of the 26dB bandwidth measurement.
The 99% Bandwidth is 242 kHz.



Temperature: 24 °C
Air Pressure: 1020 hPa
Humidity: 49 %

Op. Mode	Setup	Port
op-mode 3	37s20e01	ant. connector

Bandwidth kHz	Remarks
318	please see annex

Remark: The given value is the result of the 26dB bandwidth measurement.
The 99% Bandwidth is 244 kHz.

3.5.4 Test result: Emission and Occupied Bandwidth

FCC Part 22, Subpart H	Op. Mode	Setup	Port	Result
	op-mode 1	37s20e01	ant. connector	passed
	op-mode 2	37s20e01	ant. connector	passed
	op-mode 3	37s20e01	ant. connector	passed

3.6 Mobile emissions in base frequency range

Standard FCC Part 22, 10-01-2001
Subpart H

The test was performed according to: FCC §22.917, 10-01-2001

3.6.1 Test Description

- 1) The EUT was coupled to the R&S CMD55 Digital Communications Tester via a 10 dB attenuator and a 6 dB coupler.
- 2) The 6 dB coupler is connected via a 10 dB attenuator, a notch filter and an amplifier to the R&S Spectrum Analyser.
- 3) A path calibration is done with the notch filter tuned to the tested TCH.
- 4) For the measurement the level of the CMD55 is set to -100 dB at the input of the EUT so it is hardly visible at the Spectrum Analyser.
- 5) The power level of the TCH signal generated by the EUT is set to minimum RF output power and will be blocked by the notch filter.
- 6) The spectrum analyser is set to a RBW/VBW of 200 kHz/200 kHz.
- 7) The EUT's receive band is from 869,2 MHz to 893,8 MHz. The analyser is set to a span from 865 MHz to 895 MHz.

3.6.2 Test Requirements / Limits

§ 22.917 Mobile emissions in base frequency range

The mean power of any emissions appearing in the base station frequency range from cellular mobile transmitters operated must be attenuated to a level not to exceed -80 dBm at the transmit antenna connector.

3.6.3 Test Protocol

Temperature: 24 °C
Air Pressure: 1020 hPa
Humidity: 49 %

Op. Mode	Setup	Port
op-mode 1	37s20e02	ant. connector

Frequency MHZ	Measured Level dBm	Limit dBm
869,2	-86,94	-80

Remark: No (further) spurious emissions were found.



Temperature: 24 °C
Air Pressure: 1020 hPa
Humidity: 49 %

Op. Mode	Setup	Port
op-mode 2	37s20e02	ant. connector

Frequency MHZ	Measured Level dBm	Limit dBm
881,6	-85,74	-80

Remark: No (further) spurious emissions were found.

Temperature: 24 °C
Air Pressure: 1020 hPa
Humidity: 49 %

Op. Mode	Setup	Port
op-mode 3	37s20e02	ant. connector

Frequency MHZ	Measured Level dBm	Limit dBm
893,6	-85,46	-80

Remark: No (further) spurious emissions were found.

3.6.4 Test result: Emission and Occupied Bandwidth

FCC Part 22, Subpart H	Op. Mode	Setup	Port	Result
	op-mode 1	37s20e02	ant. connector	passed
	op-mode 2	37s20e02	ant. connector	passed
	op-mode 3	37s20e02	ant. connector	passed

4 Test Equipment

EUT Digital Signalling System

Equipment	Type	Serial No.	Manufacturer
Digital Radio Communication Tester	CMD 55	831050/020	Rohde & Schwarz
Signalling Unit for Bluetooth Spurious Emissions	PTW60	100004	Rohde & Schwarz
Universal Radio Communication Tester	CMU 200	102366	Rohde & Schwarz

EMI Test System

Equipment	Type	Serial No.	Manufacturer
Comparison Noise Emitter	CNE III	99/016	York
EMI Analyzer	ESI 26	830482/004	Rohde & Schwarz
Signal Generator	SMR 20	846834/008	Rohde & Schwarz

EMI Radiated Auxiliary Equipment

Equipment	Type	Serial No.	Manufacturer
Antenna mast 4m	MA 240	240/492	HD GmbH H. Deisel
Biconical dipole	VUBA 9117	9117108	Schwarzbeck
Broadband Amplifier 18MHz-26GHz	JS4-18002600-32	849785	Miteq
Broadband Amplifier 30MHz-18GHz	JS4-00101800-35	896037	Miteq
Broadband Amplifier 45MHz-27GHz	JS4-00102600-42	619368	Miteq
Cable "ESI to EMI Antenna"	RTK081+Aircell7	W18.01+W38.01a	Huber+Suhner
Cable "ESI to Horn Antenna"	RTK 081	W18.04+3599/001	Rosenberger
Double-ridged horn	HF 906	357357/002	Rohde & Schwarz
Double-ridged horn	HF 906	357357/001	Rohde & Schwarz
High Pass Filter	5HC3500/12750-1.2-KK	200035008	Trilithic
High Pass Filter	5HC2700/12750-1.5-KK	9942012	Trilithic
High Pass Filter	4HC1600/12750-1.5-KK	9942011	Trilithic
KUEP pre amplifier	Kuep 00304000	001	7layers
Log.-per. Antenna	HL 562 Ultralog	830547/003	Rohde & Schwarz
Loop Antenna	HFH2-Z2	829324/006	Rohde & Schwarz
Pyramidal Horn Antenna 26,5 GHz	Model 3160-09	9910-1184	EMCO

EMI Conducted Auxiliary Equipment

Equipment	Type	Serial No.	Manufacturer
Cable "LISN to ESI"	RG214	W18.03+W48.03	Huber+Suhner
Two-Line V-Network	ESH 3-Z5	828304/029	Rohde & Schwarz
Two-Line V-Network	ESH 3-Z5	829996/002	Rohde & Schwarz

Auxiliary Test Equipment

Equipment	Type	Serial No.	Manufacturer
Broadband Resist. Power Divider N	1506A / 93459	LM390	Weinschel
Broadband Resist. Power Divider SMA	1515 / 93459	LN673	Weinschel
Digital Multimeter 01	Voltcraft M-3860M	IJ096055	Conrad
Digital Multimeter 02	Voltcraft M-3860M	IJ095955	Conrad
Digital Oscilloscope	TDS 784C	B021311	Tektronix
Fibre optic link Satellite	FO RS232 Link	181-018	Pontis
Fibre optic link Transceiver	FO RS232 Link	182-018	Pontis
I/Q Modulation Generator	AMIQ-B1	832085/018	Rohde & Schwarz
Notch Filter ultra stable	WRCA800/960-6E	24	Wainwright
Spectrum Analyzer 9 kHz to 3 GHz	FSP3	838164/004	Rohde & Schwarz
Temperature Chamber	VT 4002	58566002150010	Vötsch
Temperature Chamber	KWP 120/70	59226012190010	Weiss
ThermoHygro_01	430202		Fischer

Anechoic Chamber

Equipment	Type	Serial No.	Manufacturer
Air Compressor (pneumatic)			Atlas Copco
Controller	HD 100	100/603	HD GmbH H. Deisel
EMC Camera	CE-CAM/1		CE-SYS
EMC Camera for observation of EUT	CCD-400E	0005033	Mitsubishi
Filter ISDN	B84312-C110-E1		Siemens&Matsushita
Filter telephone systems / modem	B84312-C40-B1		Siemens&Matsushita
Filter Universal 1A	B84312-C30-H3		Siemens&Matsushita
Fully/Semi AE Chamber	10.58x6.38x6		Frankonia
Turntable	DS 420S	420/573/99	HD GmbH, H. Deisel
Valve Control Unit (pneum.)	VE 615P	615/348/99	HD GmbH, H. Deisel



7 layers Bluetooth™ Full RF Test Solution

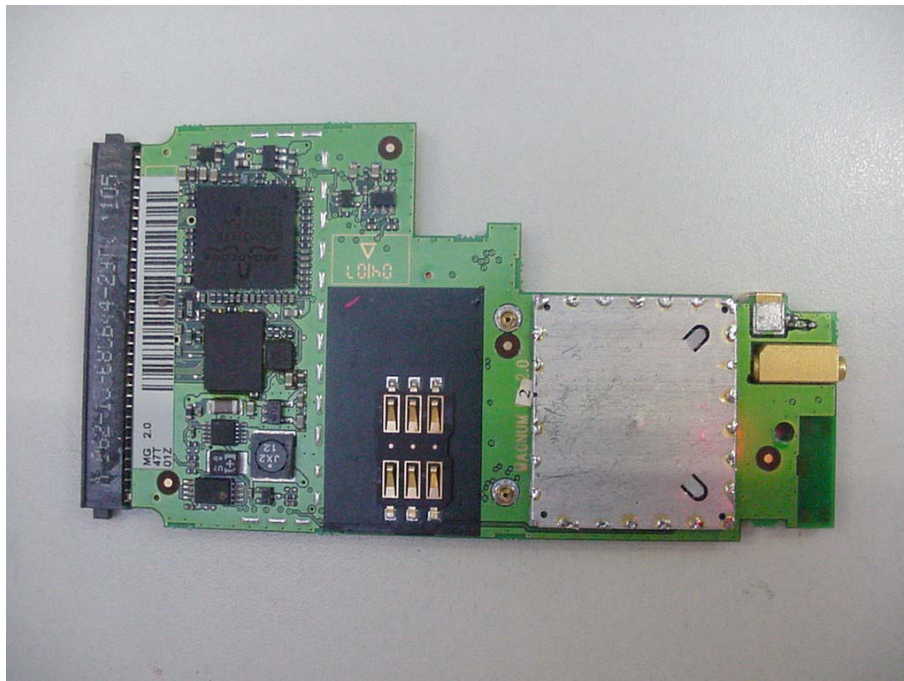
Bluetooth RF Conformance Test System TS8960

Equipment	Type	Serial No.	Manufacturer
10 MHz Reference	MFS	5489/001	Efratom
Power Meter 832025/059	NRVD	832025/059	Rohde & Schwarz
Power Sensor A 832279/013	NRV-Z1	832279/013	Rohde & Schwarz
Power Sensor B 832279/015	NRV-Z1	832279/015	Rohde & Schwarz
Power Supply	E3632A	MY40003776	Agilent
Power Supply	PS-2403D	-	Conrad
RF Step Attenuator 833695/001	RSP	833695/001	Rohde & Schwarz
Rubidium Frequency Normal	MFS	002	Efratom
Signal Analyser FSIQ26 832695/007	FSIQ26	832695/007	Rohde & Schwarz
Signal Analyser FSP30	FSP30	100051	Rohde & Schwarz
Signal Generator 101175	SMIQ03B	101175	Rohde & Schwarz
Signal Generator 833680/003	SMP 03	833680/003	Rohde & Schwarz
Signal Generator A 834344/002	SMIQ03B	834344/002	Rohde & Schwarz
Signal Generator B 832870/017	SMIQ03B	832870/017	Rohde & Schwarz
Signal Switching and Conditioning Unit	SSCU	338826/005	Rohde & Schwarz
Signalling Unit PTW60 838312/014	PTW60 for TS8960	838312/014	Rohde & Schwarz
System Controller 829323/008	PSM12	829323/008	Rohde & Schwarz

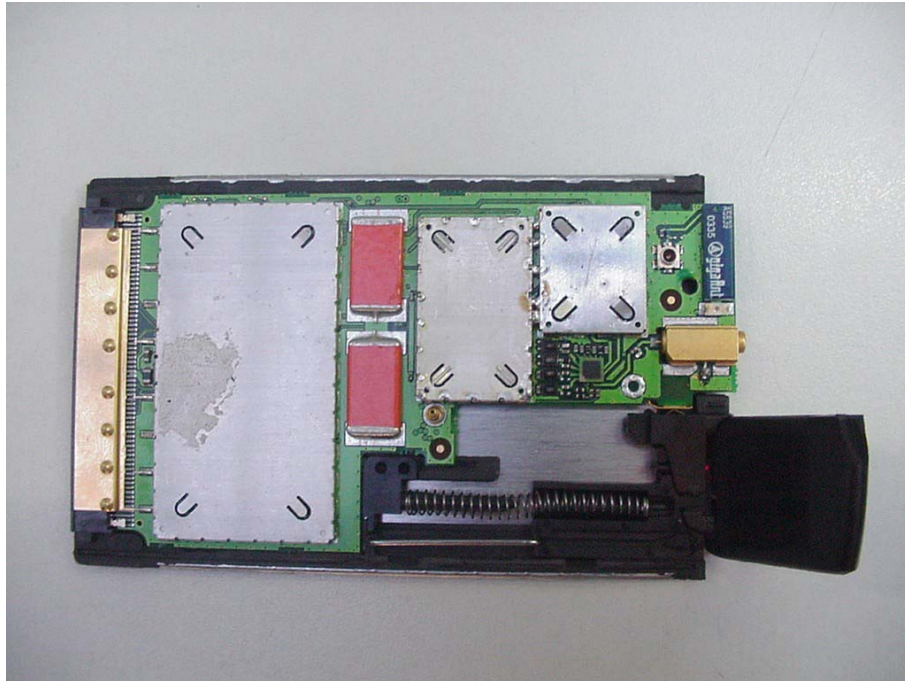
5 Foto Report



Picture 1: Setup for radiated measurements

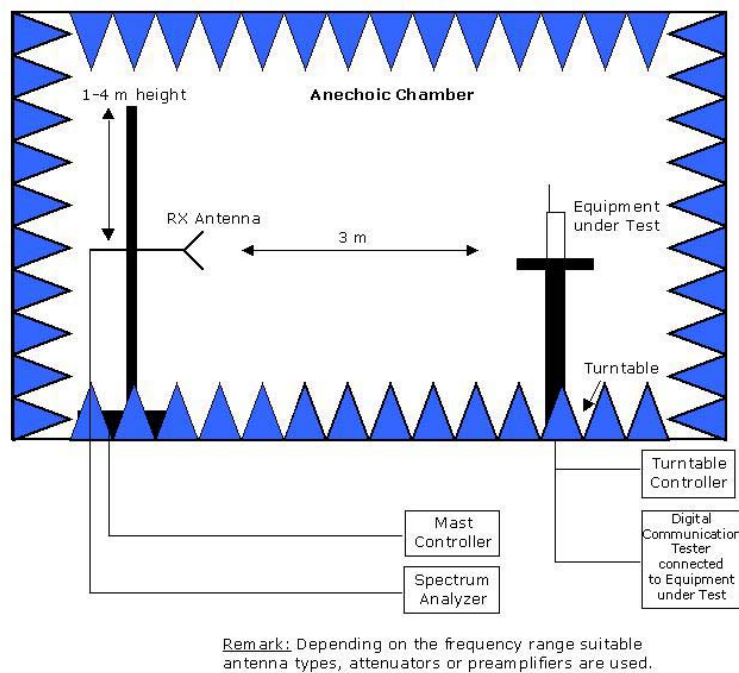


Picture 2: EUT (top side, without housing)

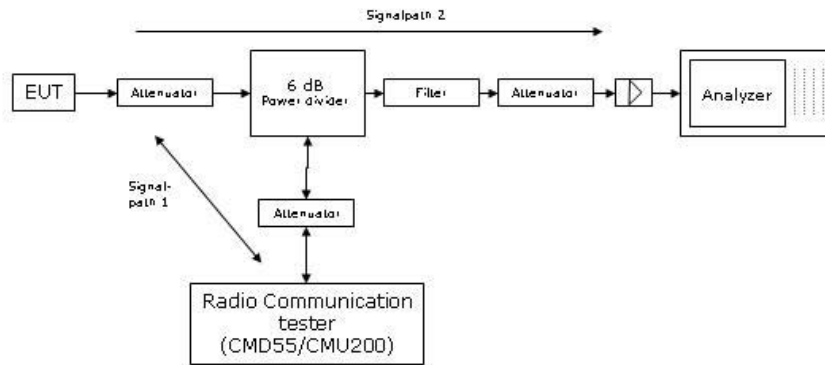


Picture 3: EUT (bottom side, without housing)

6 Setup Drawings

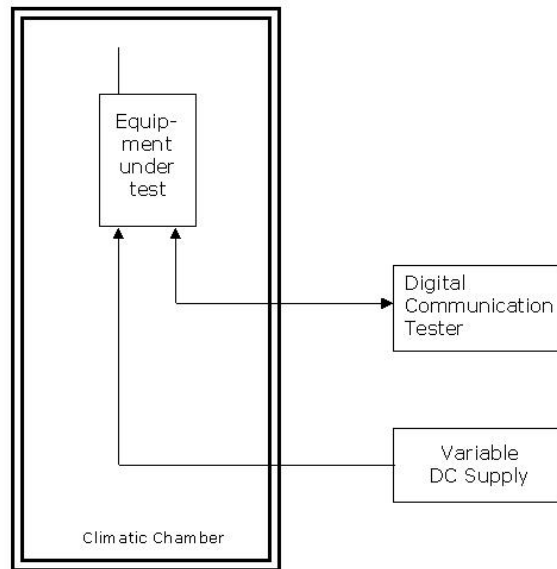


Drawing 1: Setup in the Anechoic chamber. For measurements below 1 GHz the ground was replaced by a conducting groundplane.



Remark: Depending on the frequency range suitable attenuators and/or filters and/or amplifiers are used.

Drawing 2: Principle setup for conducted measurements under nominal conditions



Drawing 3: Principle setup for tests under extreme test conditions



7 Annex