



Intertek Testing Services Hong Kong Ltd.
2/F., Garment Centre, 576 Castle Peak Road,
Kowloon, Hong Kong

10 July 2006

To Whom It May Concern:

PURPOSE OF CHANGE LETTER
For Model KX-TG2120X, KX-TG2122X

This letter is to provide additional information regarding the Application of Permissive Change for our model KX-TG2120X, KX-TG2122X based on the previously certified model KX-TG2120X, KX-TG2122X (original application).

Following are the changes made.

1. The base TX antenna was changed (antenna pattern changed) to improve the indoor range performance of the product.
2. Some components were changed to improve the overall EMI performance. The detailed change list is provided in the separate document (RF Component Values Modification List (060710)).

All design including electronic, electrical, mechanical, and cosmetics remain the same except the above-mentioned change.

The above-mentioned change is not intended for maximum power.

Should you have any query, please don't hesitate to contact the undersigned.

Your Faithfully,


Ronilo Paredes

Senior Approval Engineer

TG2120/TG2122 RF Component Values modification list

10-Jul-06

Base RF Component Values modification:

Reason of change: To improve overall EMI performance.

	<u>Old</u>	<u>New</u>
C623	3.3pF	0-ohm
C5	1.5pF	open
L12	none	4.7nH
C74	none	2pF
C38	1.5pF	2.4pF
C53	1.5pF	2.4pF
C32	2.7pF	2pF
L15	none	0-ohm
C73	none	open
C617	2pF	5pF
C616	0.75pF	0.5pF
Q4	MT3S37T	MT3S45T
R23	100-ohm	220-ohm
R29	5.6nH	3.9nH
C612	1.2pF	3pF
C1	3pF	100pF
R39	100-ohm	39-ohm
C2	39pF	100pF
C72	none	1pF
L10	0-ohm	22nH
C25	100pF	10nF
R21	20K-ohm	82K-ohm
C46	10nF	open

Handset RF Component Values modification:

Reason of change: To improve overall EMI performance.

	<u>Old</u>	<u>New</u>
C16	open	12nH
C155	12pF	0-ohm
C11	open	1.2pF
L1	15nH	12nH
L5	15nH	12nH
C225	open	3pF
L2	4.7nH	open
C221	1.5pF	10pF
R40	750-ohm	1K-ohm

The RX dielectric filter has two difference brands as follows:

KX-TG2120 - RX dielectric filter model: KSE

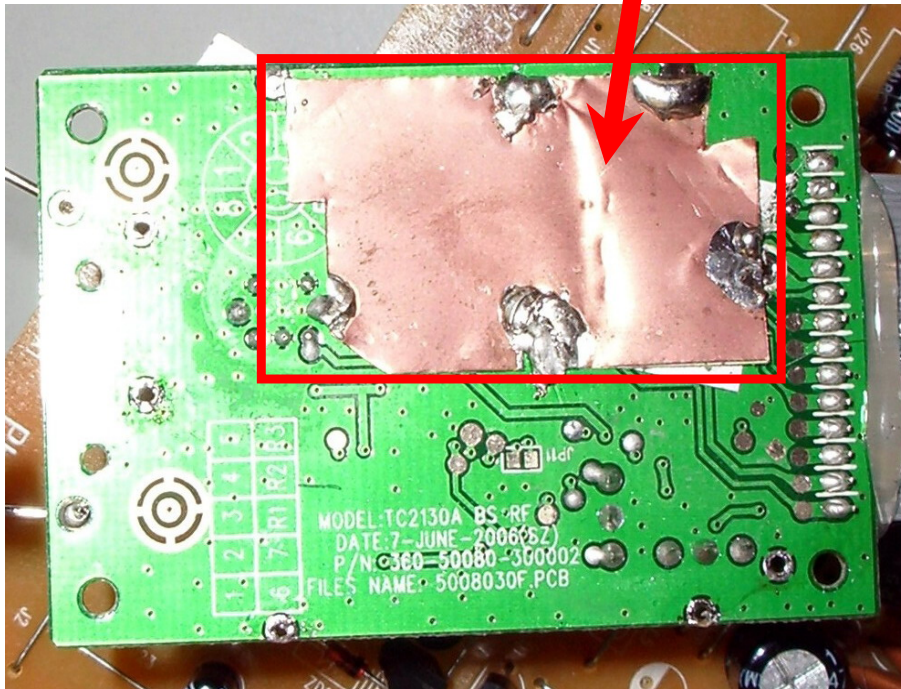
KX-TG2122 - RX dielectric filter model: ZY

TG2120/TG2122 RF Component Values modification list

10-Jul-06

Additional Copper Sheet under Base RF module:

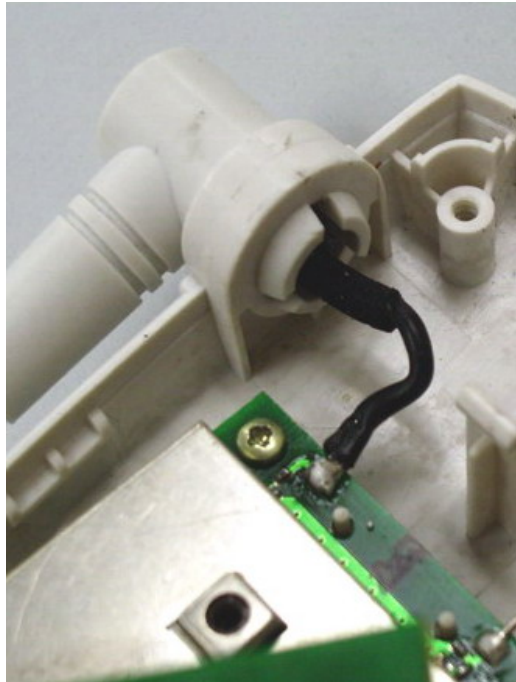
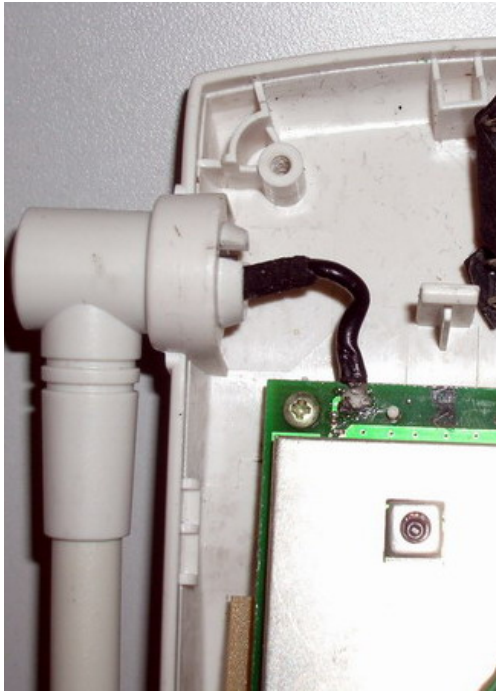
Reason of change: To improve overall EMI performance.



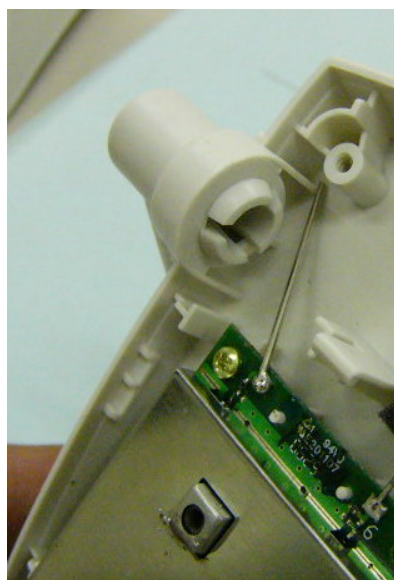
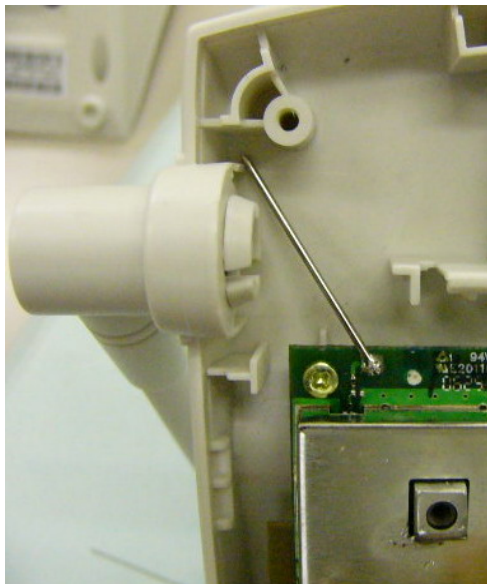
TG2120/TG2122 Modification of Base TX Antenna

10-Jul-06

Original configuration



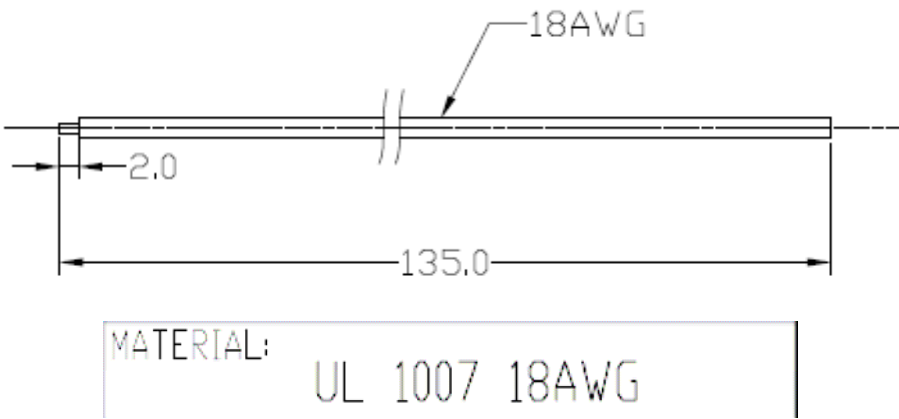
Revised configuration



TG2120/TG2122 Modification of Base TX Antenna

10-Jul-06

Specification of Original Antenna



Specification of Revised Antenna

