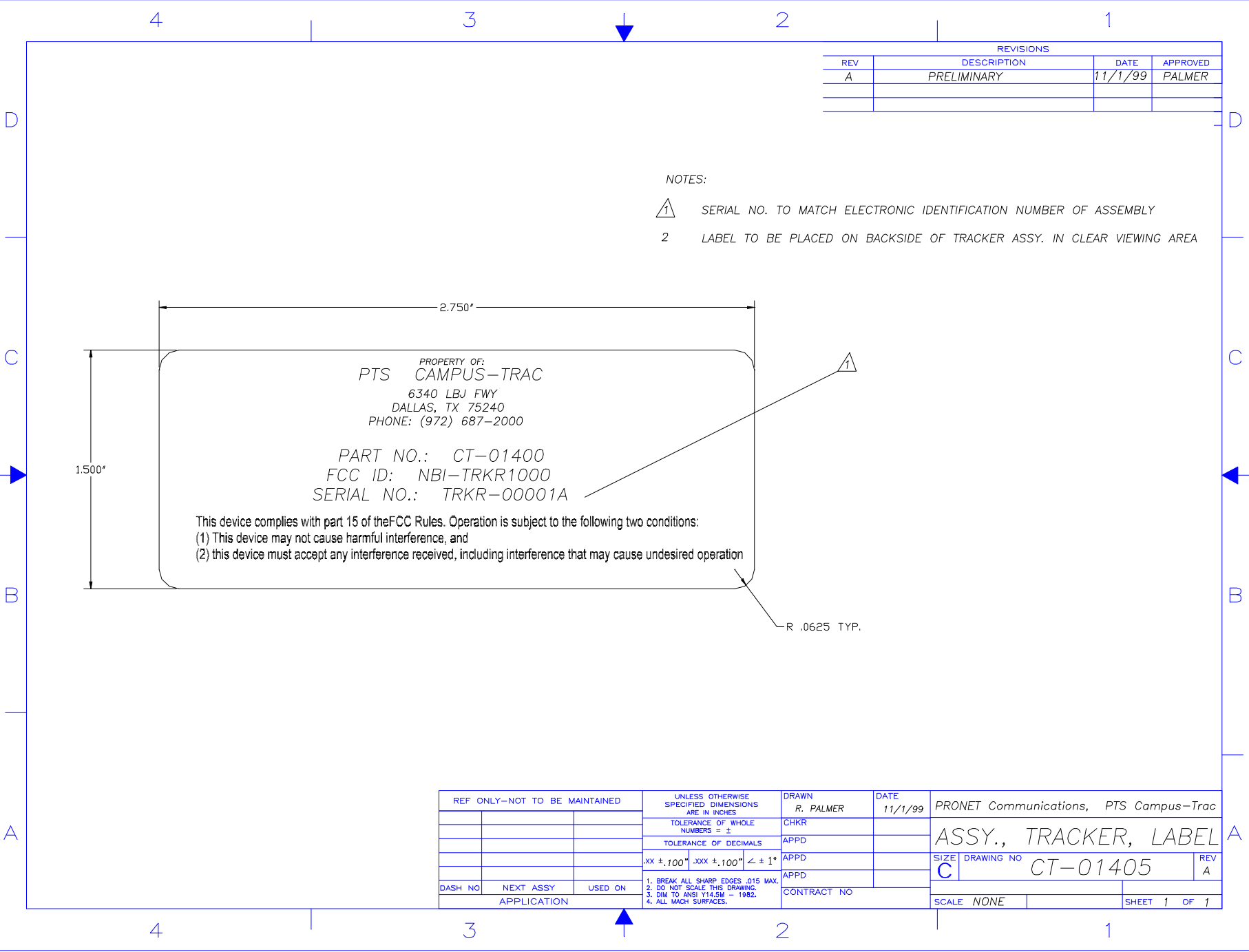


#18 is the Label Location



REVISIONS			
REV	DESCRIPTION	DATE	APPROVED
A	PRELIMINARY	11/1/99	PALMER

NOTES:

- 1 SERIAL NO. TO MATCH ELECTRONIC IDENTIFICATION NUMBER OF ASSEMBLY
- 2 LABEL TO BE PLACED ON BACKSIDE OF TRACKER ASSY. IN CLEAR VIEWING AREA

PROPERTY OF:
PTS CAMPUS-TRAC
6340 LBJ FWY
DALLAS, TX 75240
PHONE: (972) 687-2000

PART NO.: CT-01400
FCC ID: NBI-TRKR1000
SERIAL NO.: TRKR-00001A

This device complies with part 15 of the FCC Rules. Operation is subject to the following two conditions:
(1) This device may not cause harmful interference, and
(2) this device must accept any interference received, including interference that may cause undesired operation

R .0625 TYP.

REF ONLY-NOT TO BE MAINTAINED			UNLESS OTHERWISE SPECIFIED, DIMENSIONS ARE IN INCHES		DRAWN R. PALMER	DATE 11/1/99	PRONET Communications, PTS Campus-Trac	
			TOLERANCE OF WHOLE NUMBERS ± .5		CHKR		ASSY., TRACKER, LABEL	
			TOLERANCE OF DECIMALS		APPD			
			.XX ± .100"	.XXX ± .100"	APPD			
			∠ ± 1°		APPD			
DASH NO	NEXT ASSY	USED ON	1. BREAK ALL SHARP EDGES .015 MAX. 2. DO NOT SCALE THIS DRAWING. 3. DIM TO ANSI Y14.5M - 1982. 4. ALL MACH SURFACES.				CONTRACT NO	
APPLICATION							SCALE NONE	SHEET 1 OF 1

SIZE C DRAWING NO CT-01405 REV A