



HomeTek Technology Inc.

## **Appendix B**

### **User's Manual**

# Table of Contents

## I. Introduction

1. FCC Notice
2. Package Contents
3. System Requirements

## II. Hardware Installation

1. PS/2 Mouse – Mini Din 6 Pin Connector
2. Serial Mouse – D-Sub 9 Pin Connector

## III. Software Installation

1. For Win 95/98
2. For Win 31, DOS

## IV. Using Software

## V. Software Installation

## VI. How to use the Amouse Driver for DOS

1. Loading the Amouse Driver for DOS
2. Parameters of the Amouse Driver for DOS

## VII. Operation Guide for the Amouse Driver for Windows 3.1

1. About the Driver for Windows 3.1

## IX. Operation Guide for the Amouse Control Panel for Windows 3.1 or Windows 95

### Introduction

Thank you for your purchase of the most technologically advanced computer input device in the world. With almost double the input resolution of currently available devices in the marketplace, its speed and ease of use will make your computer experience more productive and enjoyable.

Give the device an ample period of time for evaluation. The increased speed and sensitivity will require different handling and usage techniques than those for devices from other suppliers.

Specifically you will note that there is no longer a requirement for a large mouse pad. A smaller pad is enclosed with this package. If you travel with a notebook you will be surprised at the ease of use of this device, even in the tight confines of an airline seat.

It is suggested that the users' wrist and forearm rest on the computer desk and the device controlled with only the use of the thumb and fourth finger. This greatly reduces fatigue associated with the use of a computer mouse and may also reduce the tendency for other Stress Related Injuries.

And finally, the speed and sensitivity can be reduced/increased for specific applications or individual preferences. This is accomplished through the Control Panel "Mouse" settings for Win 31, or "Mouse" settings for Win 95/98

Please read the Users Manual completely to fully understand the capability of the input device and minimize any chance of errors or problems with installation or usage.

## 1. Federal Communications Commission (FCC) Notice

This equipment has been tested and found to comply with the limits for a Class B digital device, pursuant to Part 15 of the FCC Rules. These limits are designed to provide reasonable protection against harmful interference when the equipment is operated in a residential installation. This equipment generates, uses, and can radiate radio frequency energy and if not installed and used in accordance with the instruction manual may cause harmful interference to radio communications. However, there is no guarantee that interference will not occur in a particular installation. If this equipment does cause harmful interference to radio or television reception, which can be determined by turning the equipment off and on, the user is encouraged to try to correct the interference by one or more of the following measures:

- Reorient or relocate the receiving antenna.

- Increase the separation between the equipment and receiver.

- Connect the equipment into an outlet on a circuit different from that to which the receiver is connected.

- Consult the dealer or an experienced radio TV technician for help.

Notice: Any changes or modifications not expressly approved by the party responsible for compliance could void the user's authority to operate the equipment.

## 2. Package Contents

1. Mouse
2. Users Manual
3. Mouse pad
4. Software Installation Disk

## 3. System requirements

- a. Personal computer: IBM PC, XT, AT, PS/2, other compatible Desktop Computer, NoteBook or LapTop computer.
- b. Driver Installation: Two Floppy Disk Drives; one Hard Disk Drive, and at least one Floppy Disk Drive; or Network capability.
- c. Display Mode: Hercules, CGA, EGA, VGA or Super VGA with VESA format.
- d. Communication ports: COM1/COM2 serial port or a PS/2 communication port.
- e. Operating system: PC-DOS or MS-DOS 3.0 or higher, Windows 3.1, Windows 95/98 or Later.

## Hardware Installation

Before you begin installation of this device please note there may be software conflicts generated with some other installed drivers. To prevent the occurrence of conflicts, disable or remove existing mouse drivers and change to standard serial or PS/2 mouse drivers as supplied with your operating system.

As with all electronic devices, your computer should be powered down before the installation proceeds. Should any problems be encountered during installation or operation, check the contents of this manual. If the problem still can not be resolved contact your dealer for technical support.

### 1. PS/2 Mouse - Mini Din 6 Pin Connector

- a. The PS/2 Mouse uses a Mini Din 6 Pin Connector like that shown in figure (G.1).
- b. Locate the PS/2 Port on your PC.
- c. Attach the connector of the Mouse to the PC.
- d. Turn on your computer and proceed with the Software Installation procedure.

### 2. Serial Mouse - D-Sub 9 Pin Connector

- a. The serial Mouse uses a D-Sub 9 Pin Connector like that shown in figure (G.2).
- b. Locate the RS-232C (Com) Port on the PC.
- c. Attach the connector of the Mouse to the PC.
- d. Turn on your computer and proceed with the Software Installation procedure.

## Software Installation

This software driver only design for the XN Tech mouse. So if you use other mouse it may not work by installing this driver.

1. Connect the mouse cable into the connector of your computer.
2. Start Windows 95 or windows 98, If this is your first mouse for your new system, the Windows will try to find the default driver for you new mouse (Plug and Play). Please let the Windows do the Plug and Play action, don't cancel it.
3. Insert the XN 3D diskette into floppy A or B.
4. Click the Win95/98 Start button and select Run.
5. Type A:\Setup or B:\Setup from the Dialog box
6. This is one click installation, after installation is completed. Please restart the Windows, then you can start to enjoy the feature of XN mouse.

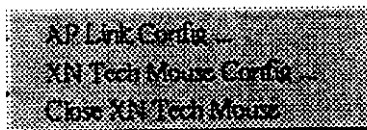
# Using Software



Once you have installed the software driver and restart the Windows, an activator icon will appear at Windows 95 Taskbar.

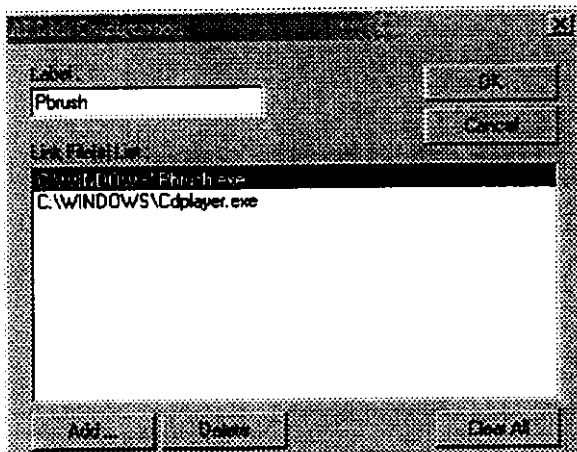
Double-click the activator icon to activate the Mouse properties software which contains several Pages for you to configure.

Or you can right single-click the activator icon to popup a menu with Which you can select the following options;



## 1. AP Link Config...

Configure the application list of My Application within the Configure the Easyjump.



2. **XN Tech Mouse Config...**

Activate the Mouse properties software.

3. **Close XN Tech Mouse**

Close the mouse software, and disable the extra functions within the mouse properties.

Select the **XN Tech Mouse** icon in the **Start Menu** to restart the Mouse activator software.

The Mouse properties software can also be activated from the '**MouseControl**' of control panel.



# Software features

- Step Saver Page
- Visibility Page
- Productivity page
- Wheel page

This software utility adds much more features than the standard mouse. We categorize these features into 4 groups within the pages of mouse properties. You can configure these features by choosing the mouse properties from the control panel.

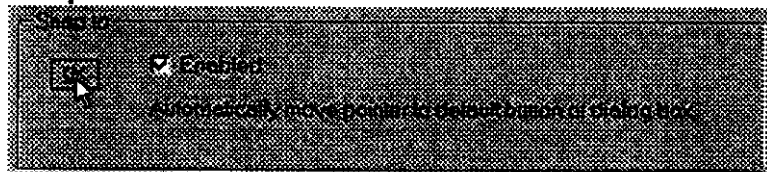
Please read the following description of the software features.

- **Step Saver Page**



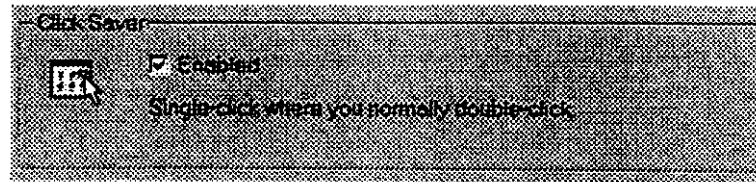
This page contains four properties for you to configure, which will save the distance of mouse movement, or the times of mouse click while you are using the mouse.

## 1. Snap to



Enable this feature, the mouse cursor will automatically move to the default button of the dialog box which you just invoke.

## 2. Click saver



Enable this feature, you only single click the mouse left button where you normally Double-click.

## 3. Focus



Enable this feature, you select a window just by pointing at the title bar of that window.

## 4. Smart speed



Enable this feature, it will slow down the speed of the mouse movement when mouse Pointer on the button or other controls.

- **Visibility Page**



This page contains 2 properties for you to configure, which will change the feature of mouse visibility.

### 1. Vanish



Enable this feature, the Typing shape pointer will automatically vanish on typing.

### 2. Pointer Warp



Enable this feature, the pointer will move onto the opposite of the screen automatically.

- **Productivity page**



This page contains 2 properties for you to configure, which are ClickLock and Orientation.

### 1. ClickLock

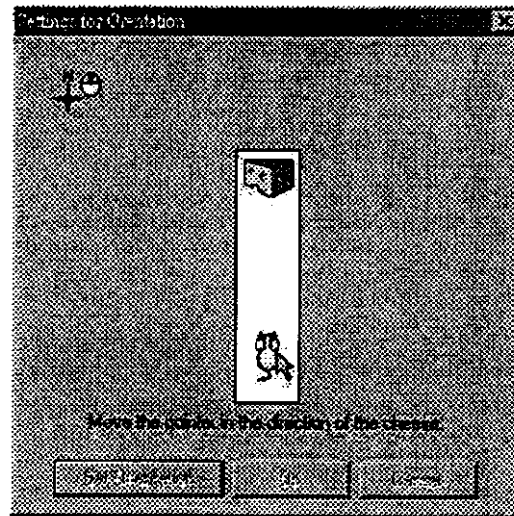


Enable this feature, you only single click the left button and move the pointer in stead of hold down the button. Click again to release ClickLock

### 2. Orientation



Click the Settings button, you can adjust the way of pointer movement.



- **Wheel page**



This page contains 2 properties for you to configure the Wheel and Wheel button.

- **Wheel**



Turn on the Wheel, you can scroll vertically or horizontally (if vertical scroll not exist).

You can also adjust the scroll speed or reverse the scroll direction by pressing the 'settings' button.

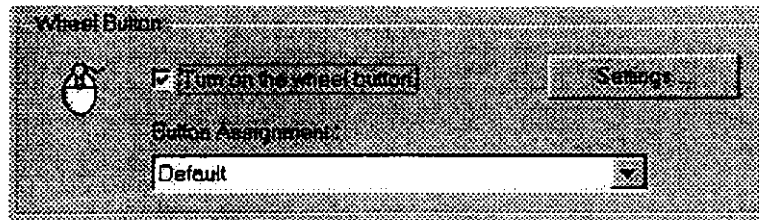
1. Direction - Enable this feature to reverse the direction of scroll.



2. Scrolling - Select scroll several lines or one screen at a time.

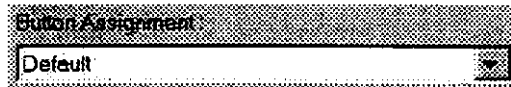


- Wheel button



Turn on the Wheel button, you can assign one of eight optional features for this button.

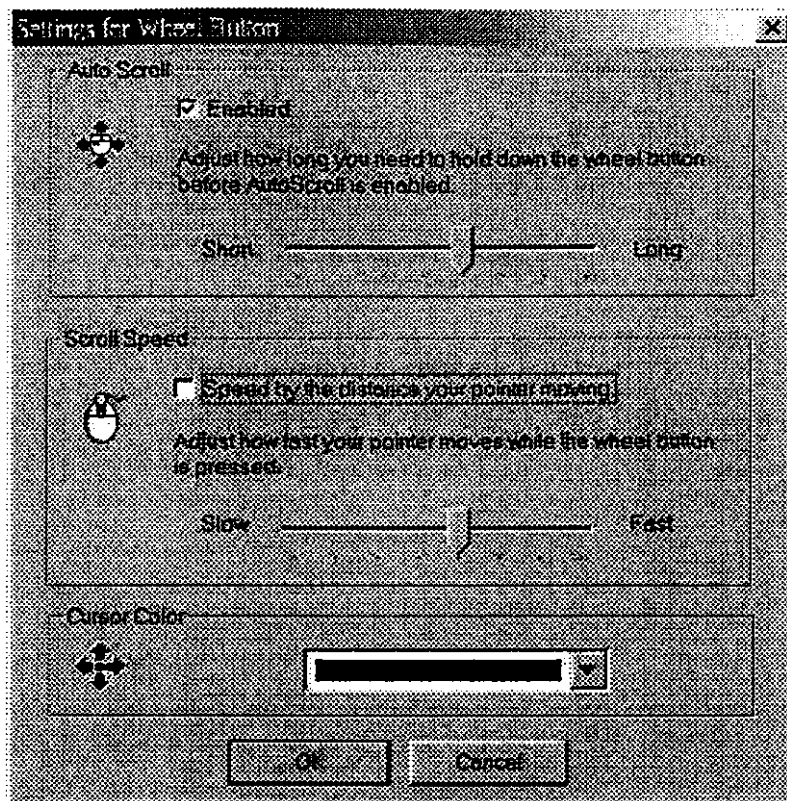
1. **Default**



The default feature for Wheel button is Auto scroll.

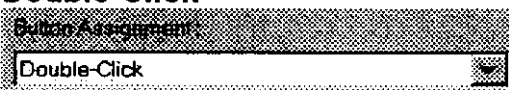
By single click this button, an Auto-scroll indicator will appear.

Click the Wheel button again to release the Auto-scroll feature.



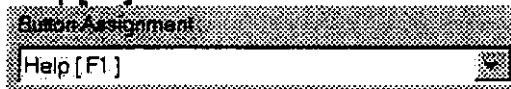
You can also adjust the scrolling speed or change the cursor color by Pressing the 'settings' button.

## 2. Double-Click



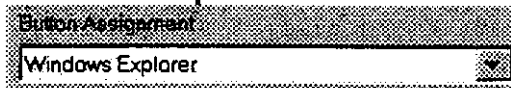
This feature will replace single click the wheel button as double click the primary button.

### 3. Help[F1]



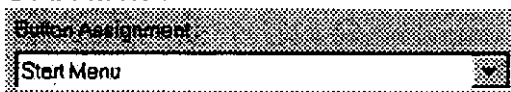
Set Wheel button as F1 key.

### 4. Windows Explorer



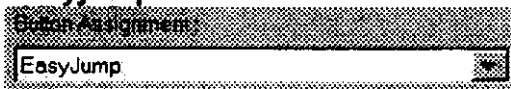
Click Wheel button to launch Windows Explorer AP.

### 5. Start Menu



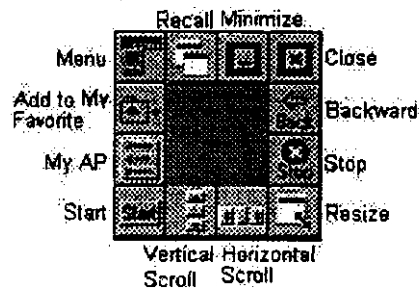
Set Wheel button as Windows95 Start Key.

### 6. Easyjump



Click Wheel button, an Tool Pad contains twelve commonly used tasks under Windows 95 or Internet browser.

Select one of enabled button to activate the corresponding function.



- **Menu**  
Activate the Menu.
- **Recall**  
Recall the previous active window.
- **Minimize**  
Minimize the active window.
- **Close**  
Close the active window.
- **Add to My Favorite**  
Activate Add to My favorite window.



- **Backward**  
Return to previous page.
- **My Application Menu**  
Popup an user defined Application menu.
- **Stop**  
Stop down load.
- **Start**  
Activate Windows start button.
- **Vertical Scroll**  
Move pointer to vertical scroll bar.
- **Horizontal Scroll**  
Move pointer to Horizontal scroll bar.
- **Resize**  
Move pointer to size grip.

## Installation of the Amouse Driver for DOS, Windows 3.1

### \*Under the DOS environment

- a. Insert the diskette in the floppy drive (A: or B:)
- b. Change the directory "Dir" to the floppy drive at the prompt.  
A: or B:
- c. Run INSTALL.EXE.
- d. Remove the diskette.
- e. Restart the system.

### \*Under the Windows 3.1 environment

- a. Insert the diskette in the floppy drive (A: or B:).
- b. Change the directory "Dir" to the floppy drive at the prompt.  
A: or B:
- c. Run WSETUP.EXE.
- d. Remove the diskette.
- e. Restart the system.

## How to use the Amouse Driver for DOS

### 1. Loading the Amouse Driver for DOS

- a. The Amouse Driver for DOS will install in the directory "C:\AMOUSE" in your Hard Disk Drive after INSTALL.EXE on the Driver Disk has been run.
- b. The Driver files can be copied or moved to any directory desired.
- c. To load the driver into memory, change the directory to the path of the Amouse Driver. Enter the command "AMOUSE" at the DOS prompt. The Amouse Driver will be loaded into memory.

### 2. Parameters of the Amouse Driver for DOS

Amouse Driver command format is shown below:

Usage: AMOUSE [option]

- 1,2,3,4 : Search serial mouse on specified Com Port.  
P : Search PS/2 mouse on PS/2 port.  
Q : Release AMOUSE.COM from memory.  
? : Show this help message.

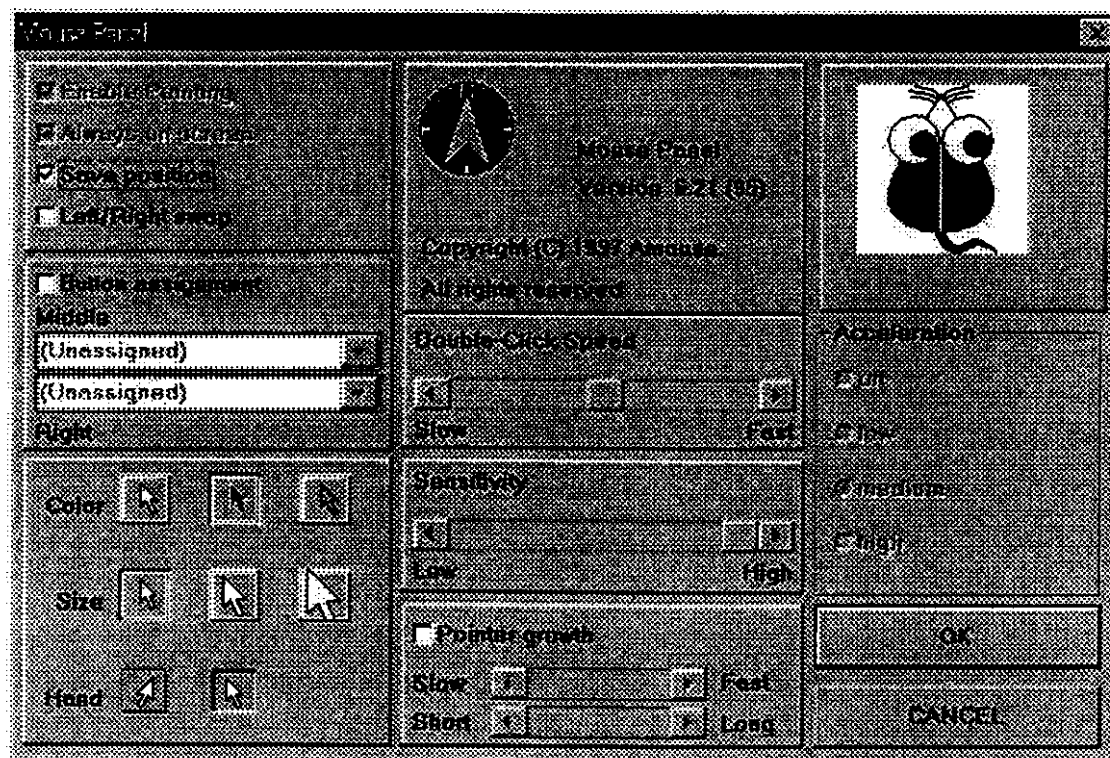
## Operation Guide for the Amouse Driver for Windows 3.1

### 1. About the Amouse Driver for Windows 3.1

- a. The Amouse Driver can be found in the Windows 3.1 directory tree in C:\Amouse after "INSTALL.EXE" on the Driver Disk has been executed, or after "WSETUP" within the windows environment has been executed.
- b. The Driver files can not be moved to another directory.
- c. Windows 3.1 will load the Mouse Driver automatically with system boot.

## Operation Guide for the Amouse Control Panel for Windows 3.1

- a. The Mouse Driver parameters can be setup by double-clicking the Amouse Icon in the Control Panel of the Main Group, which starts the Amouse Panel program.
- b. The parameters can be adjusted by clicking the appropriate icons in the Amouse Control Panel.
- c. Enable Pointing: If this choice is enabled and "OK" selected to leave the Amouse Panel, the Amouse Icon will stay on the screen and the Amouse Icon will indicate the direction from the Mouse Cursor to the Amouse Icons
- d. Always on screen: When this choice is enabled and "OK" selected to leave the Amouse Panel, the Amouse Icon will be always on top of the screen
- e. Save position: This choice forces the system record the position of the Amouse Icon.
- f. Left/Right swap: Selection of this choice allows the Left Button Function and Right Button Function to be switched.
- g. Button assignment: This Selection allows the assignment of the functions of the secondary Button and Middle Button to specialized commands.
- h. Color: Click on one of the three Icons to choose the Cursor color of choice.
- i. Size: Click on one of the three Icons to choose the Cursor size of choice.
- j. Hand: Click on one of the two Icons to choose the display direction of the Cursor.
- k. Sensitivity: This scroll Bar allows the user to adjust the Cursor Sensitivity by varying the dynamic resolution of the mouse. Sliding the bar to the right increases the dynamic resolution and speed of the mouse to the left will decrease the dynamic resolution and speed of the mouse.
- l. Pointer growth: The two Scroll Bars allow adjustment of Pointer growth when the Mouse is moved. Clicking on the Pointer growth check box enables this function.
- m. Acceleration: Acceleration of the mouse is a function of the dynamic resolution. Choice of one of the four selections determines the acceleration curve of the mouse. The user can determine the best acceleration rate for a specific application.
- n. OK: Leaves the Amouse Panel program and makes the changes the user has made effective.
- o. CANCEL: Leaves the Amouse Panel program and ignores all changes made.



**Nissei Sangyo Co., Ltd.**

**-Subsidiary of Hitachi, Ltd.**

Shin Kang Chung Shan Bldg 10Fl.,

44, Sec.2, Chung Shan N. Rd.,

Taipei, 104 Taiwan, R.O.C.

TEL:886-2-25226962

FAX:886-2-25365475

Service Center:

XNTC New Tech. Corp.

4F. No.112, Cheng-Kuong Rd.,

San-Chung City,

Taipei, Taiwan, R. O. C.

TEL:886-2-29750048

TEL:886-2-29752942