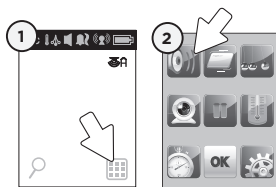


5.2 - SOUND

TO ACTIVATE SOUND:



- 1) Press **Menu** icon to access main menu.
- 2) Press **sound** icon to **activate** or **deactivate** sound.



- 3) Press **OK** icon to confirm.

TO TEST SOUND:

Ask someone to speak into the Nursery Unit or place the unit near a radio to ensure that sound is being picked up.

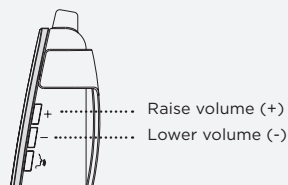
IMPORTANT

To avoid feedback (whistling), keep both units at least 3 m apart.

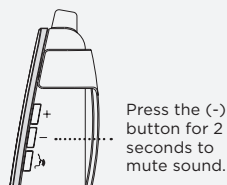
IF YOU HEAR NO SOUND:

- Check that both units are powered on.
- Check that both units are plugged into functioning electrical outlets.
- Check the batteries in both units (replace or recharge them if necessary).
- Bring Parent Unit closer to Nursery Unit.

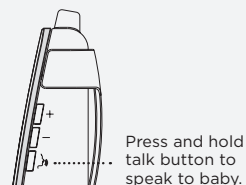
ADJUST SOUND LEVEL



PUT IN SILENT/MUTE MODE



PUT IN DIALOGUE MODE



5.3 - BATTERIES

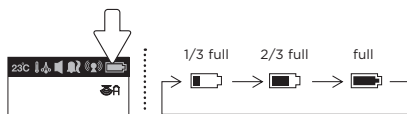
HOW TO CHECK THE BATTERIES:

Unplug the Adapters from both units.

- If the green light on the Nursery Unit does not show, replace the batteries.
- If the Parent Unit and its screen do not light up, recharge the batteries.

HOW TO CHARGE THE BATTERIES IN THE PARENT UNIT:

Leave the Parent Unit in the Charging Cradle to fully charge the unit. Although the batteries at 1/3 capacity works normally, we recommend that you fully recharge them.



PARENT UNIT BATTERY ALARM

- Alarm activates when the batteries need to be recharged.
- Parent Unit will emit a beep sound every 15 seconds.
- Battery Alarm icon will show on LCD screen.

YOU ARE NOW READY TO USE YOUR MONITOR

The Angelcare® monitor can be used with the pre-program factory settings or you can also customise your settings to your preference.

DEFAULT SETTINGS



Continuous Sound: ON
Speaker Volume: Level 3 (of 6)



Movement Mode: ON
Sensor Pad Sensitivity: Level 3 (of 5)
TIC: OFF



Temperature Alarm: OFF
Temperature Alarm Settings:
High Temperature Limit: 32°
Low Temperature Limit: 5°



VOX Mode: OFF



Alarm Mode: Sound alarm only



Video Camera: ON



IMPORTANT

- Test your monitor before first use.
- Test your monitor regularly to ensure it is functioning correctly.
- Test your monitor every time you move the Sensor Pad to a different place.

STEP 6 - ACTIVATING AND DEACTIVATING ADDITIONAL FUNCTIONS



All changes and adjustments made in the main menu and sub-menus will not be activated unless you confirm them by pressing the **OK** icon.

IMPORTANT

When in the menu or sub-menu modes, sound transmission between Parent and Nursery Units will be temporarily deactivated. ONLY the motion-detection alarm will remain active (if function is activated).

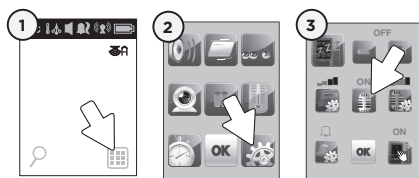
6.1 - VOICE ACTIVATION (VOX) OR CONTINUOUS SOUND MODE

Allows you to select your option on how you monitor sound:

VOX (voice activation picks up sound based on the setting of the sensitivity level) or

Continuous (sound monitoring is continuously on, picking up all sounds).

TO ACTIVATE VOX MODE:



- 1) Press **Menu** icon to access the main menu.
- 2) Press **settings** icon to access sub-menu.
- 3) Press **the VOX** icon to **activate** or **deactivate** the VOX function.

NOTE:

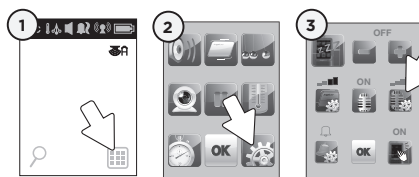
By deactivating VOX the Continuous setting is ON.

- 4) Press **OK** to confirm.



TO ADJUST THE VOX SENSITIVITY:

Allows you to determine the sound level needed to trigger sound transmission to the Parent Unit.

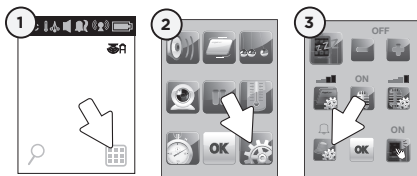


- 1) Press **Menu** icon to access the main menu.
- 2) Press **settings** icon to access sub-menu.
- 3) Press **VOX** icon sensitivity to choose sound sensitivity level (1 to 4).
- 4) Press **OK** to confirm.



6.2 - ALARM

Allows you to select your preferred alarm mode for the Parent Unit.



- 1) Press the **Menu** icon to access main menu.
- 2) Press the **settings** icon to access sub-menu.
- 3) Press the **Alarm** icon to change the alarm mode.
- 4) Press **OK** to confirm.



Sound alarm only



Sound alarm and vibration



Vibration only (the alarm will not sound on Parent Unit but it will on Nursery Unit).



Alarm Mode icon shows in the top bar of the Parent Unit.

Sound alarm will replace vibration mode when the Parent Unit is in its Charging Cradle.

When the battery capacity is low, the vibration will be temporary deactivated. It will reactivate when the battery is fully recharged.

IMPORTANT

When in setting mode no sound or alarms will transmit to the Parent Unit, except the movement alarm (if this function was already activated).

6.3 - HOLD

Allows you to put your Angelcare Monitor on HOLD.



Nursery Unit Night Light will blink. Parent Unit will emit 3 consecutive beeps every 30 seconds to remind you that monitor is on hold.

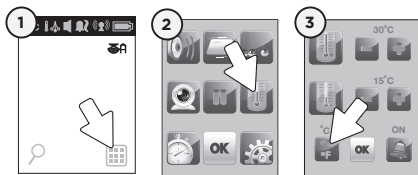
- 1) Press the **Menu** icon to access main menu.
- 2) Press the **Hold** icon
OR
Press and hold the **Nursery Unit Main button** for at least 2 seconds.
- 3) **Hold** icon will appear on the screen.
- 4) Press the **Hold** icon or **Nursery Unit Main button** again to return to normal operation.

IMPORTANT

When your monitor is on hold, the motion-detection feature and motion alarm are disabled.

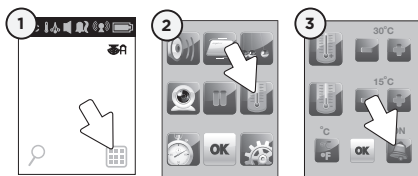
6.4 - THERMOMETER

TO CHANGE THE MEASUREMENT UNIT:



- 1) Press the **Menu** icon to access main menu.
- 2) Press the **temperature** icon to access sub-menu.
- 3) Press the **°C °F** icon to change from **Celsius** to **Fahrenheit**.
- 4) Press **OK** to confirm.

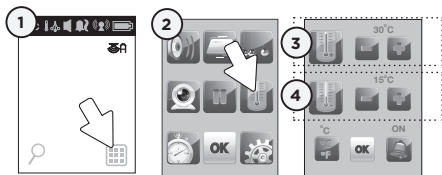
TO ACTIVATE THE TEMPERATURE ALARM:



- 1) Press the **Menu** icon to access main menu.
- 2) Press the **temperature** icon to access sub-menu.
- 3) Press the **Temperature Alarm** icon to **activate** or **deactivate** temperature alarm.
- 4) Press **OK** icon to confirm.

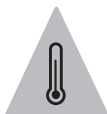
Temperature Alarm icon:
Indicates temperature alarm is active.

TO SET THE TEMPERATURE RANGE:



The range between the minimum and maximum temperature must be at least 4 °C/7 °F. An error tone will be heard if you try to set it up below this minimum level.

- 1) Press the **Menu** icon to access main menu.
- 2) Press the **temperature** icon to access sub-menu.
- 3) Press (+ or -) to set **maximum** temperature range (15 to 32 °Celsius /59 to 90 °Fahrenheit).
- 4) Press (+ or -) to set **minimum** temperature range (5 to 20 °Celsius /41 to 68 °Fahrenheit).
- 5) Press **OK** icon to confirm.

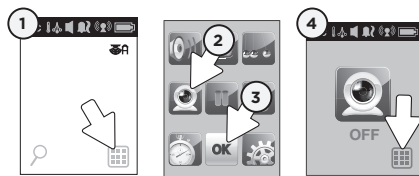


TEMPERATURE ALARM

- Alarm activates when temperature reaches maximum or minimum set temperature.
- Parent Unit will emit 4 consecutive beeps, every 5 seconds.
- Temperature Alarm icon will show on LCD screen.

6.5 - VIDEO

Allows you to turn video function ON or OFF.

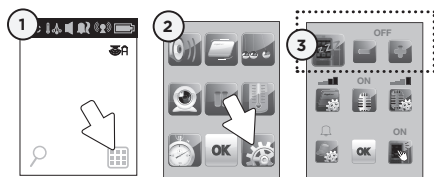


- 1) Press the **Menu** icon to access main menu.
- 2) Press the **Video** icon to **activate** or **deactivate** the video function.
- 3) Press **OK** to confirm.
- 4) Press the **Menu** icon to return to main menu.



6.6 - SCREEN SAVER

Allows you to set the screen saver starting point.



- 1) Press the **Menu** icon to access main menu.
- 2) Press **settings** icon to access sub-menu.
- 3) Press the **Screen Saver** icon to select the delay before video mode turn into screen saver mode.
- 4) Press **OK** to confirm.



NOTE:

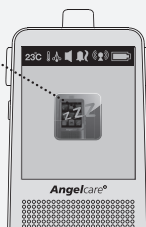
Screen Saver icon will appear when video is in Screen Saver mode.

MANUAL SETTING:

To trigger manually the screen saver mode push the Parent Unit **Power button**.
Do not push it for more than 2 seconds since this will shut down the Parent Unit.

TO REVERT BACK TO CAMERA CAPTION

Press the screen



6.7 - INFRARED NIGHT VISION

Allows you to capture image when lighting is insufficient.

TO ACTIVATE NIGHT VISION:

Press the **Night Vision** icon to chose available modes:




AUTO: The infrared LEDs will turn on automatically when the lighting is not sufficient. The image transition takes 20 seconds



ON: The infrared LEDs are ON at all times.



OFF: The infrared LEDs are OFF at all times.

 The Moon icon will appear when the infrared LEDs are ON.

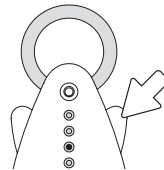
There are 4 built-in infrared LEDs on the Nursery Unit to enable clear black and white image. The image transition takes 20 seconds.

6.8 - NIGHT LIGHT

Allows you to use your monitor as a night light.

TO ACTIVATE THE LIGHT:

Push **right 'wing'** of Nursery Unit to the night light ON or OFF.

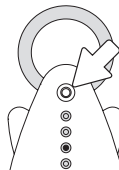


6.9 - PAGER

Allows you to locate the Parent Unit.

TO LOCATE PARENT UNIT:

Press Nursery Unit main button for less than 2 seconds. The Parent Unit will emit a paging sound for one minute.



IMPORTANT

If you press the Main Button for more than 2 seconds, you will put the movement monitoring on Hold. To Unhold, push the button again.

TO STOP THE PAGING SOUND:



Press the Parent Unit screen

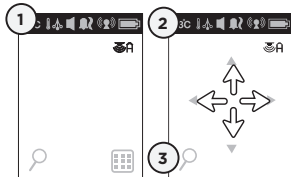
OR

Press the Nursery Unit's main button



6.10 - ZOOM MODE

Allows you to zoom in to twice the normal view.



- 1) Press the **zoom** icon.
- 2) Press the **directional arrows** to zoom in on what you want to see more closely.
- 3) Press the **zoom** icon again to return to normal view.

6.11 - MUTE

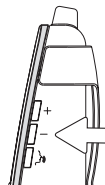
Allows you to put your monitor in Silent/Mute mode

TO PUT ON MUTE:

Press the (-) button and hold for 2 seconds to mute sound.

TO UNMUTE:

Press the (-) button again and hold for 2 seconds to unmute sound.

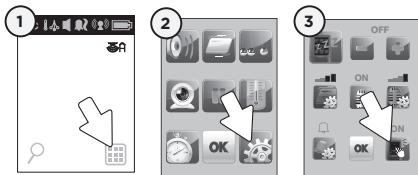


NOTE:

On the Parent Unit, the Mute ICON will blink.

6.12 - KEY TONE

Allows you to activated or deactivate key tone sound.

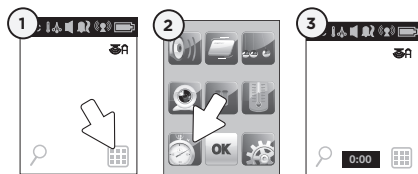


- 1) Press the **Menu** icon to access main menu.
- 2) Press the **settings** icon to access sub-menu.
- 3) Press icon to **activate** or **deactivate** key tone sound.
- 4) Press **OK** icon to confirm.



6.13 - TIMER

Attain activities.



- 1) Press **Menu** icon to access main menu.
- 2) Press **Timer** icon to start or stop the timer.
- 3) View **Timer** in video mode. (shows in minutes only).
 - Stops automatically after 5 hrs 59 min.
 - Stops automatically if the Parent Unit is turned OFF.

