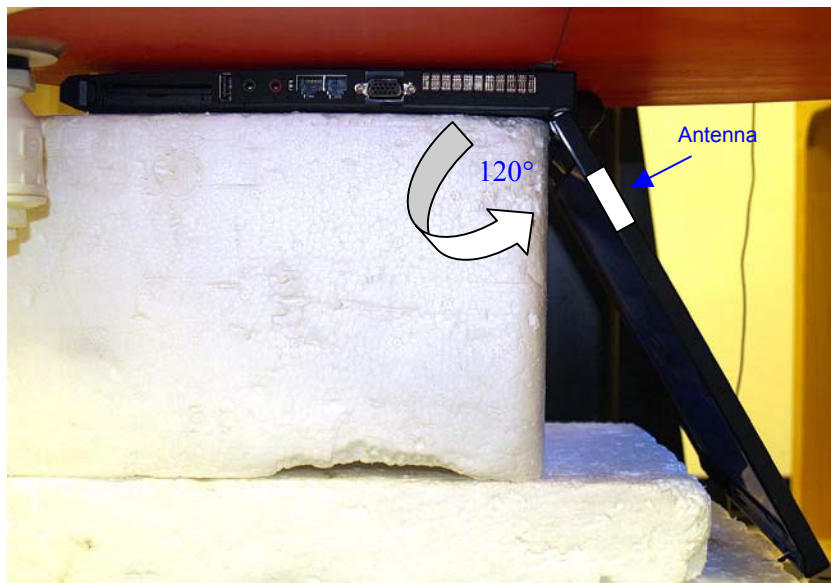


## 8 SAR MEASUREMENT RESULTS

### 8.1 CELL BAND

#### 8.1.1 GPRS 1-4 SLOTS



##### GPRS 1 slot

Channel	f (MHz)	Measured SAR 1g (mW/g)	Power Drift (dB)	Extrapolated <sup>1)</sup> SAR 1g (mW/g)
128	824.20	0.061	0.000	0.061
192	837.00			
251	848.80			

##### GPRS 2 slots

Channel	f (MHz)	Measured SAR 1g (mW/g)	Power Drift (dB)	Extrapolated <sup>1)</sup> SAR 1g (mW/g)
128	824.20	0.100	0.000	0.100
192	837.00	0.116	0.000	0.116
<b>251</b>	<b>848.80</b>	<b>0.135</b>	<b>0.000</b>	<b>0.135</b>
<b>251<sup>4)</sup></b>	<b>848.80</b>	<b>0.135</b>	<b>0.000</b>	<b>0.135</b>

##### GPRS 3 slots

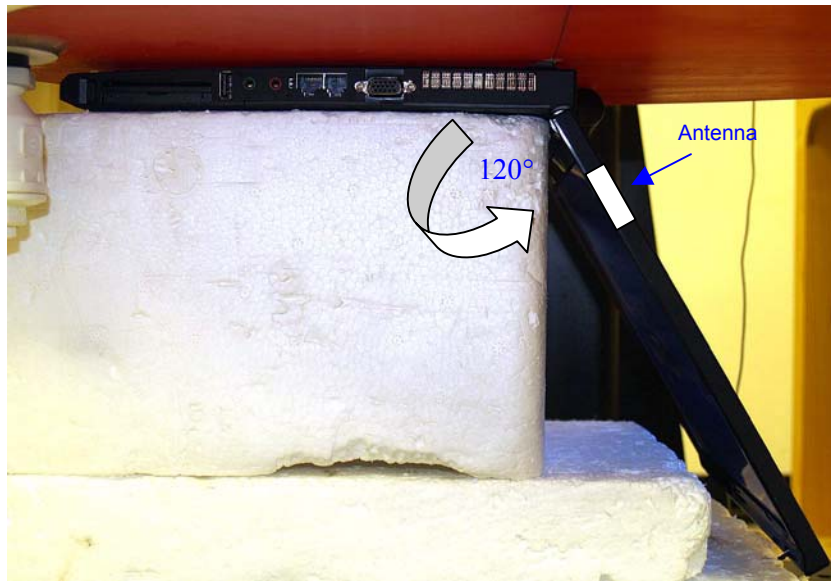
Channel	f (MHz)	Measured SAR 1g (mW/g)	Power Drift (dB)	Extrapolated <sup>1)</sup> SAR 1g (mW/g)
128	824.20	0.090	0.000	0.090
192	837.00			
251	848.80			

##### GPRS 4 slots

Channel	f (MHz)	Measured SAR 1g (mW/g)	Power Drift (dB)	Extrapolated <sup>1)</sup> SAR 1g (mW/g)
128	824.20	0.064	0.000	0.064
192	837.00			
251	848.80			

##### Notes:

- 1) The exact method of extrapolation is  $\text{Measured SAR} \times 10^{(-\text{drift}/10)}$ . The SAR reported at the end of the measurement process by the DASY4 system can be scaled up by the Power drift to determine the SAR at the beginning of the measurement process.
- 2) Please see attachments for the detailed measurement data and plots showing the maximum SAR location of the EUT.
- 3) Collocation with Bluetooth Module.

**8.1.2 EGPRS, WCDMA, & WCDMA + HSDPA****EGPRS 2 slots**

Channel	f (MHz)	Measured SAR 1g (mW/g)	Power Drift (dB)	Extrapolated <sup>1)</sup> SAR 1g (mW/g)
128	824.20	0.042	0.000	0.042
192	837.00			
251	848.80			

**WCDMA 12.2k RMC**

Channel	f (MHz)	Measured SAR 1g (mW/g)	Power Drift (dB)	Extrapolated <sup>1)</sup> SAR 1g (mW/g)
4132	826.40	0.084	0.000	0.084
4182	836.40			
4233	846.60			

**WCDMA 12.2k RMC+ HSDPA**

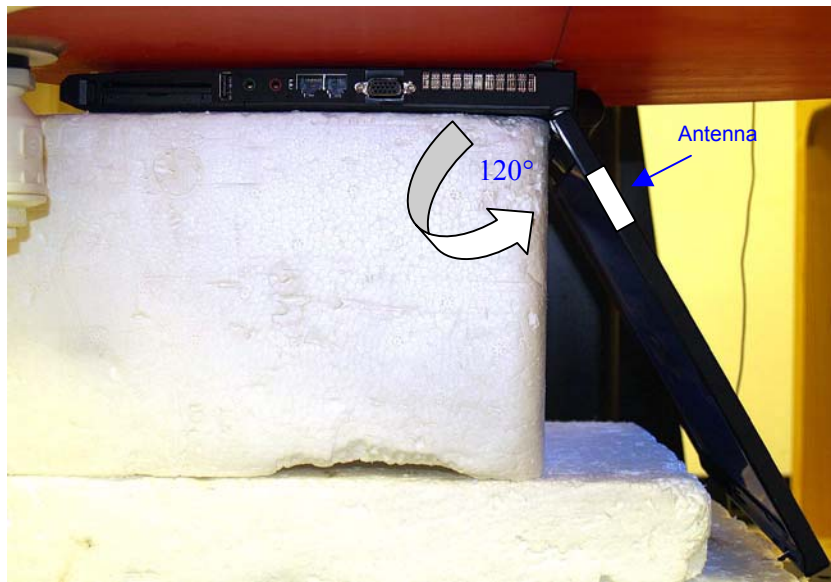
Channel	f (MHz)	Measured SAR 1g (mW/g)	Power Drift (dB)	Extrapolated <sup>1)</sup> SAR 1g (mW/g)
4132	826.40	0.083	-0.062	0.084
4182	836.40			
4233	846.60			

**Notes:**

- 1) The exact method of extrapolation is  $\text{Measured SAR} \times 10^{(-\text{drift}/10)}$ . The SAR reported at the end of the measurement process by the DASY4 system can be scaled up by the Power drift to determine the SAR at the beginning of the measurement process.
- 2) Please see attachments for the detailed measurement data and plots showing the maximum SAR location of the EUT.

## 8.2 PCS BAND

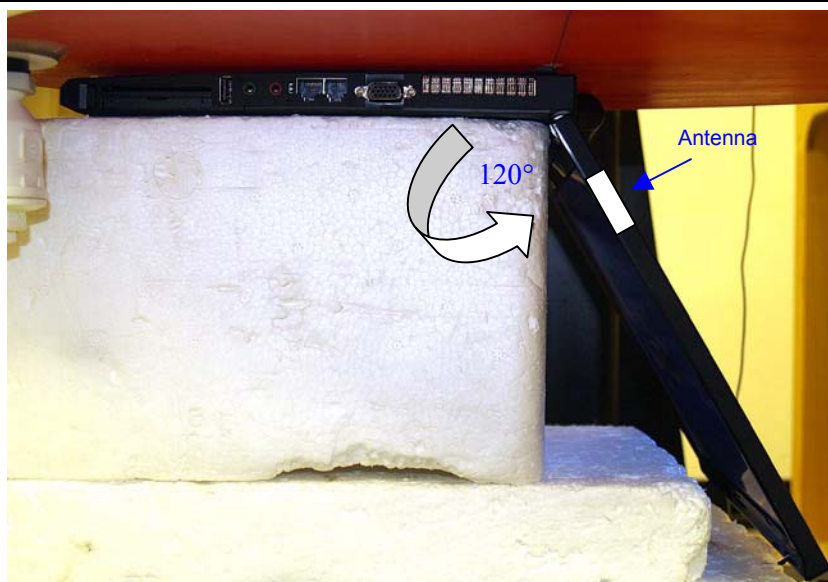
### 8.2.1 GPRS 1-4 SLOTS



Channel	f (MHz)	Measured SAR 1g (mW/g)	Power Drift (dB)	Extrapolated <sup>1)</sup> SAR 1g (mW/g)
512	1850.20	0.047	-0.001	0.047
661	1880.00			
810	1909.80			
GPRS 2 slots				
Channel	f (MHz)	Measured SAR 1g (mW/g)	Power Drift (dB)	Extrapolated <sup>1)</sup> SAR 1g (mW/g)
512	1850.20	0.088	-0.035	0.088
661	1880.00			
810	1909.80			
GPRS 3 slots				
Channel	f (MHz)	Measured SAR 1g (mW/g)	Power Drift (dB)	Extrapolated <sup>1)</sup> SAR 1g (mW/g)
512	1850.20	0.127	0.000	0.127
661	1880.00			
810	1909.80			
GPRS 4 slots				
Channel	f (MHz)	Measured SAR 1g (mW/g)	Power Drift (dB)	Extrapolated <sup>1)</sup> SAR 1g (mW/g)
512	1850.20	0.176	-0.034	0.177
661	1880.00	0.180	-0.004	0.180
810	1909.80	0.156	-0.036	0.157
661 <sup>3)</sup>	1880.00	0.179	-0.168	0.186

**Notes:**

- 1) The exact method of extrapolation is  $\text{Measured SAR} \times 10^{(-\text{drift}/10)}$ . The SAR reported at the end of the measurement process by the DASY4 system can be scaled up by the Power drift to determine the SAR at the beginning of the measurement process.
- 2) Please see attachments for the detailed measurement data and plots showing the maximum SAR location of the EUT.
- 3) Collocation with Bluetooth Module.

**8.2.2 EGPRS, WCDMA, & WCDMA + HSDPA****EGPRS 2 slots**

Channel	f (MHz)	Measured SAR 1g (mW/g)	Power Drift (dB)	Extrapolated <sup>1)</sup> SAR 1g (mW/g)
512	1850.20	0.105	-0.082	0.107
661	1880.00			
810	1909.80			

**WCDMA12.2k RMC**

Channel	f (MHz)	Measured SAR 1g (mW/g)	Power Drift (dB)	Extrapolated <sup>1)</sup> SAR 1g (mW/g)
9262	1852.40	0.112	-0.038	0.113
9400	1880.00			
9538	1907.60			

**WCDMA 384k RMC<sup>3)</sup>**

Channel	f (MHz)	Measured SAR 1g (mW/g)	Power Drift (dB)	Extrapolated <sup>1)</sup> SAR 1g (mW/g)
9262	1852.40	0.111	0.000	0.111
9400	1880.00			
9538	1907.60			

**WCDMA 12.2k + HSDPA**

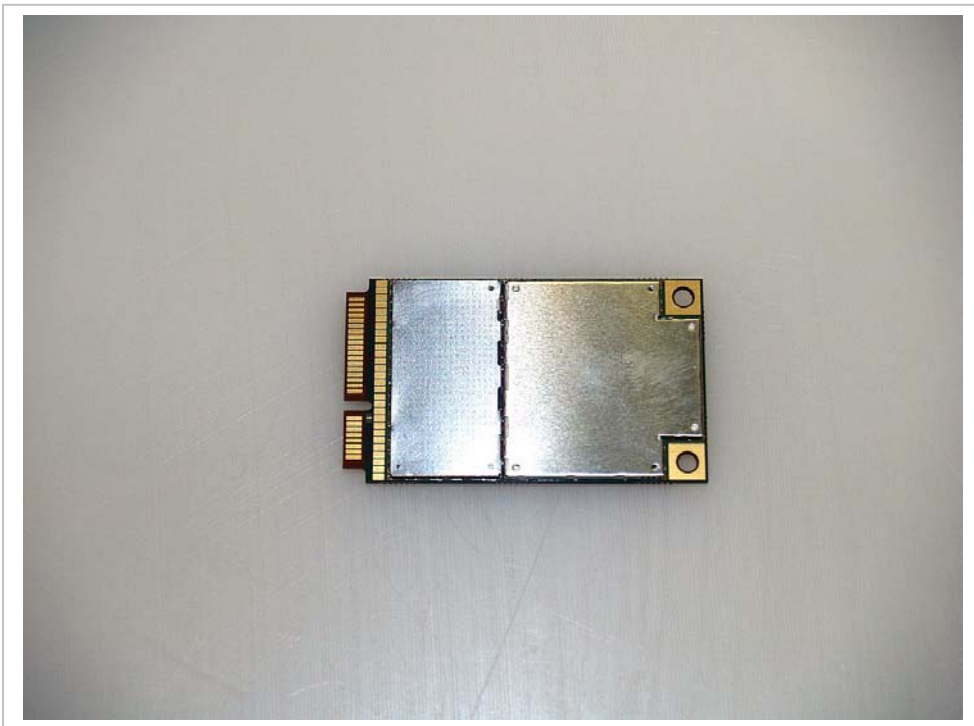
Channel	f (MHz)	Measured SAR 1g (mW/g)	Power Drift (dB)	Extrapolated <sup>1)</sup> SAR 1g (mW/g)
9262	1852.40	0.108	0.000	0.108
9400	1880.00			
9538	1907.60			

**Notes:**

- 1) The exact method of extrapolation is  $\text{Measured SAR} \times 10^{(-\text{drift}/10)}$ . The SAR reported at the end of the measurement process by the DASY4 system can be scaled up by the Power drift to determine the SAR at the beginning of the measurement process.
- 2) Please see attachments for the detailed measurement data and plots showing the maximum SAR location of the EUT.
- 3) This mode is tested since the power level is 1/4 dB higher than 12.2k RMC mode.

**11 PHOTOS**

DUT

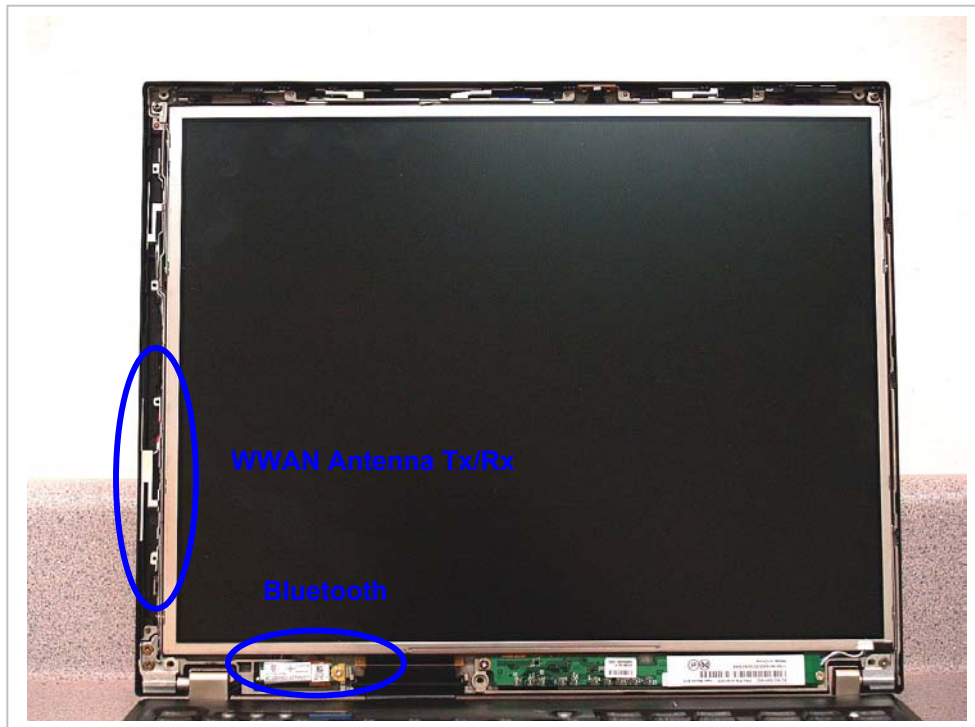




Host Laptop: Lenovo - ThinkPad T61 14.1-inch



Antenna location



DUT Location

