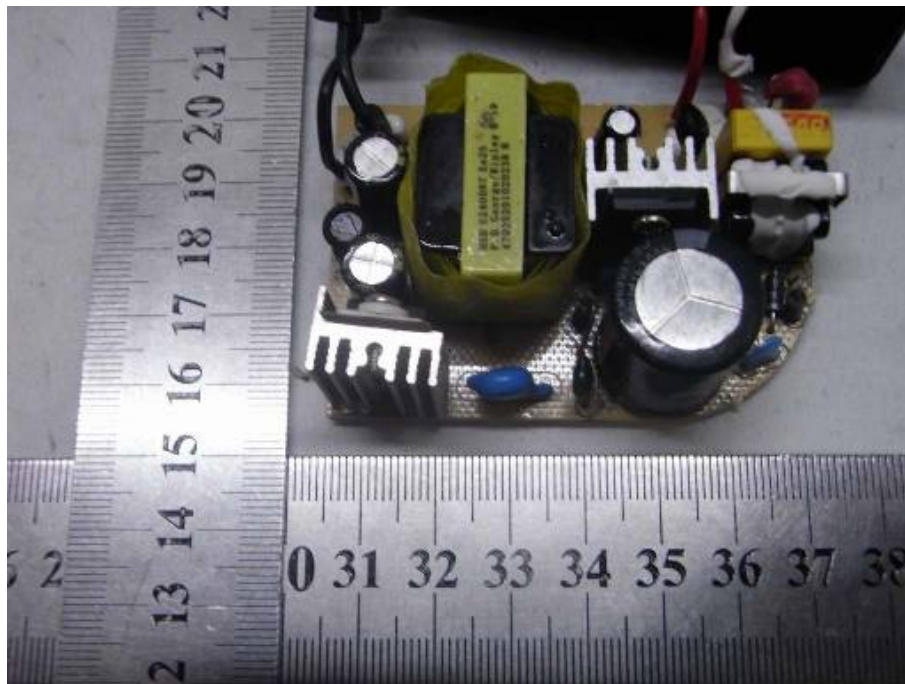
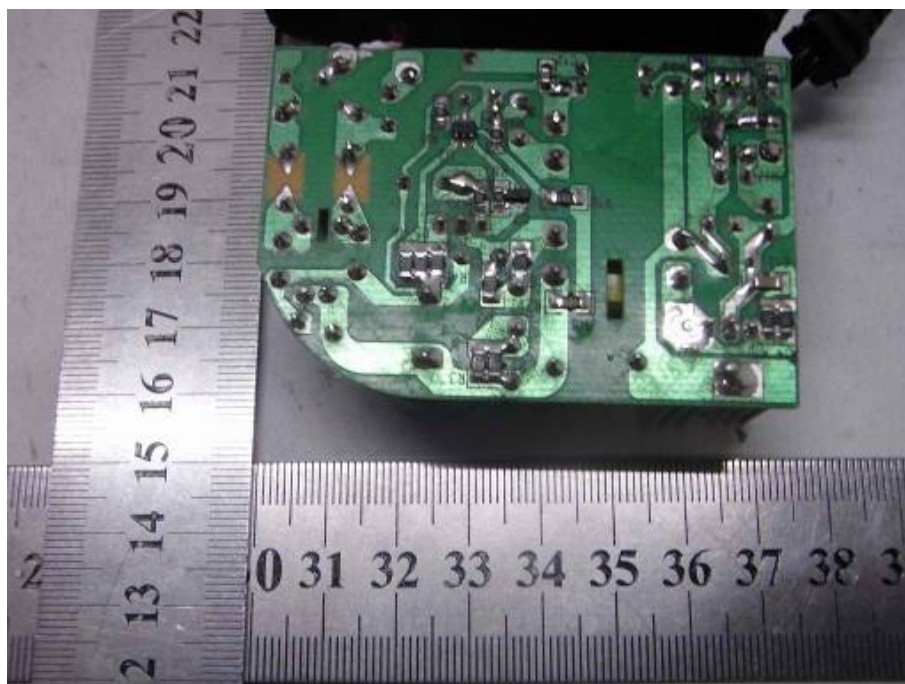


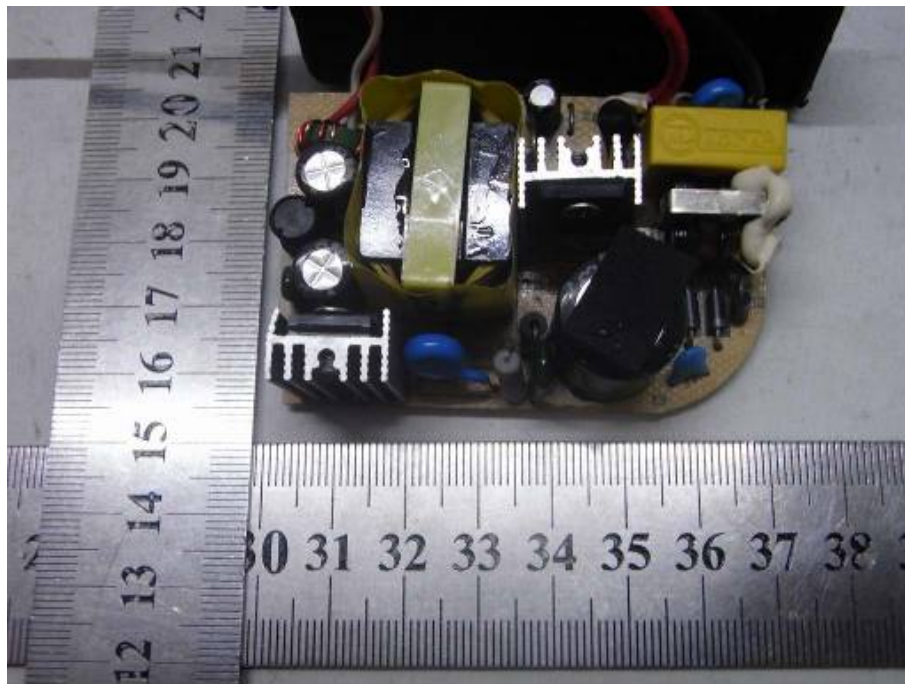
INSIDE OF POWER SUPPLY-MODEL 1-1



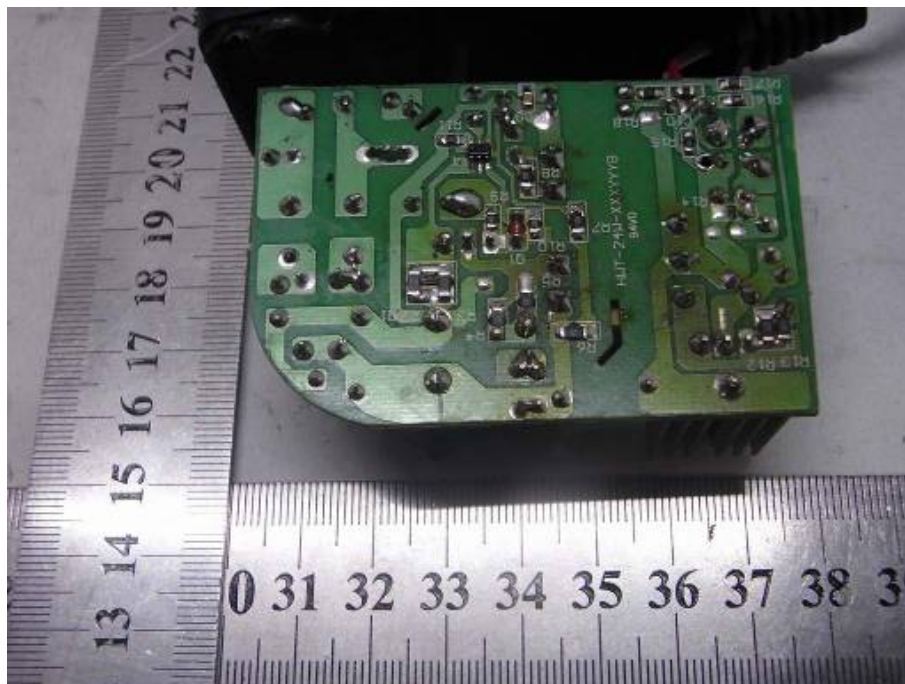
INSIDE OF POWER SUPPLY-MODEL 1-2



INSIDE OF POWER SUPPLY-MODEL 2-1



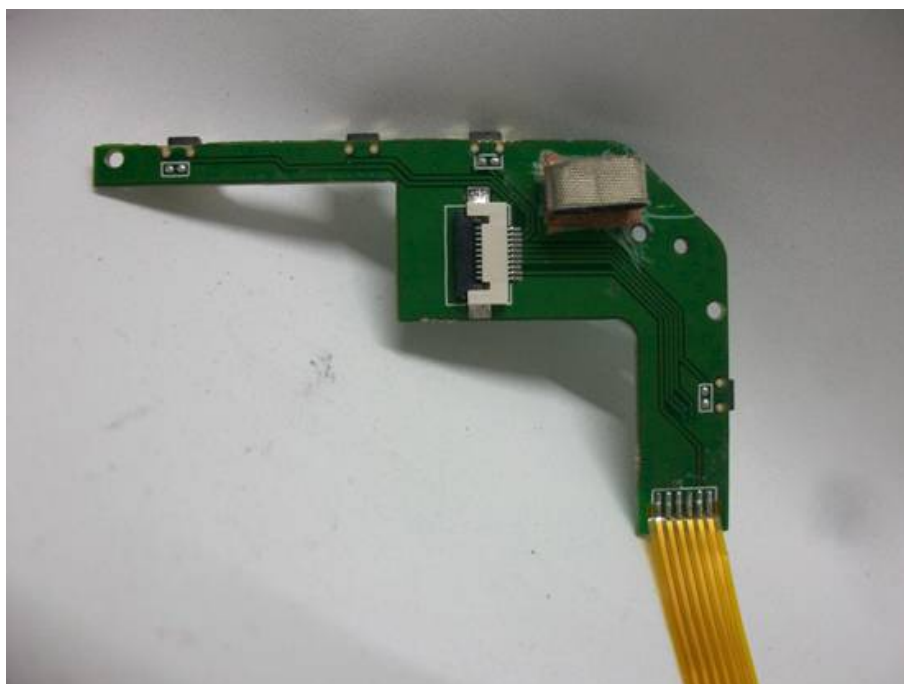
INSIDE OF POWER SUPPLY-MODEL 2-2



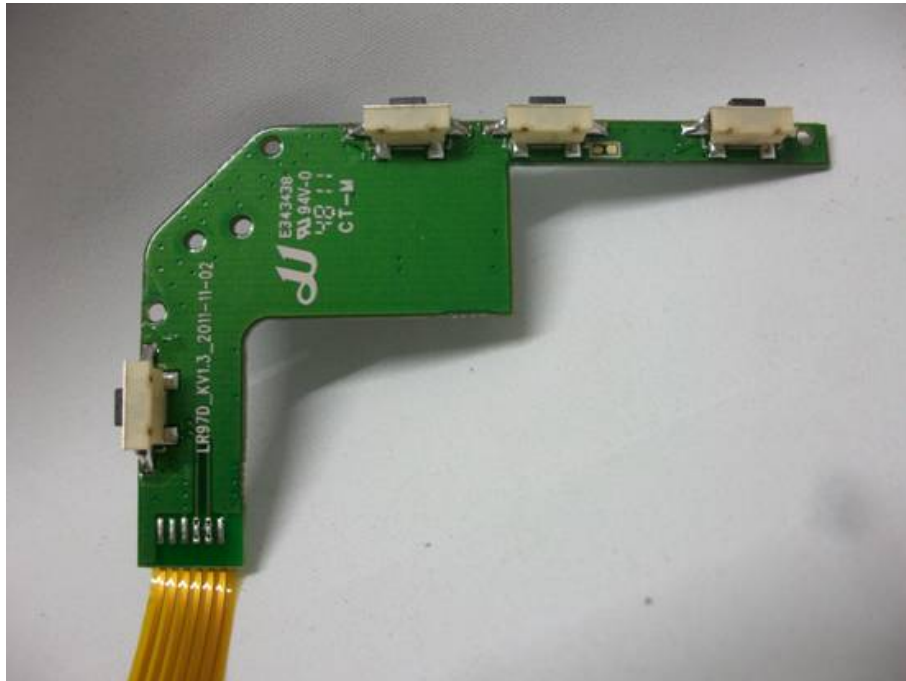
INTERNAL PHOTO OF SAMPLE – 1



INTERNAL PHOTO OF SAMPLE – 2



INTERNAL PHOTO OF SAMPLE -3

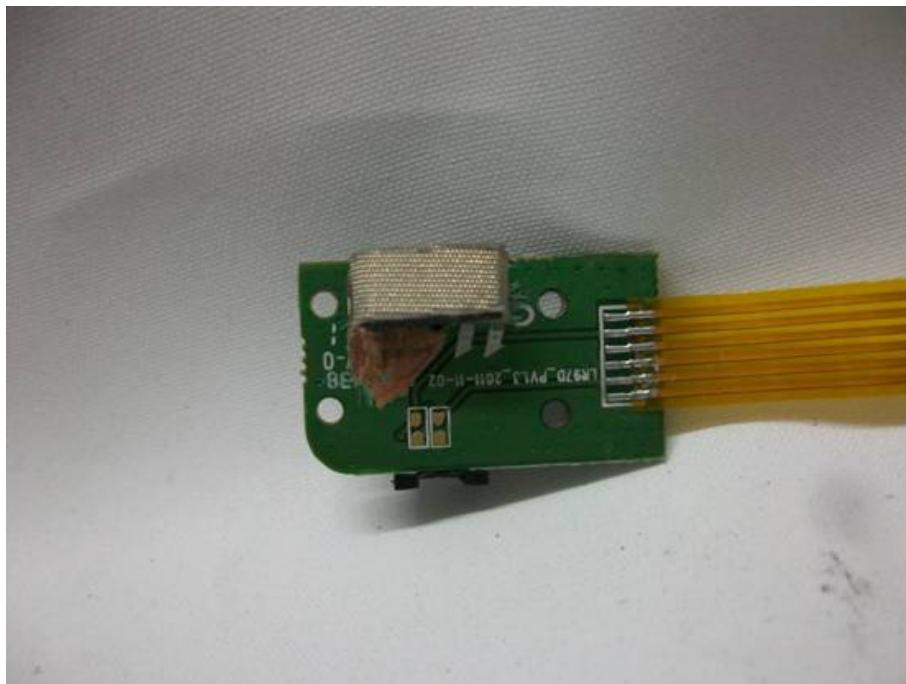


INTERNAL PHOTO OF SAMPLE -4





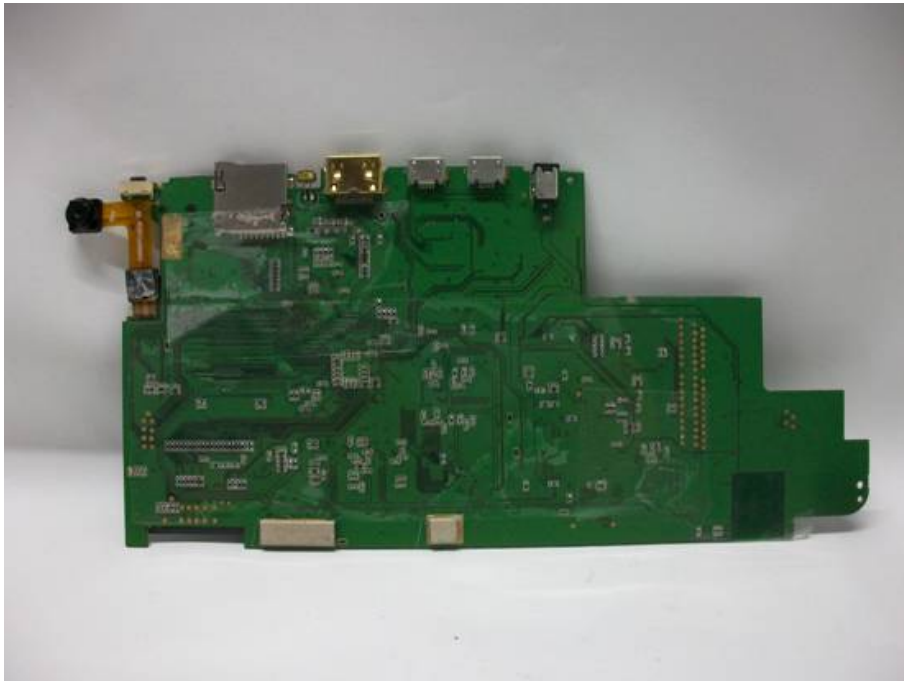
INTERNAL PHOTO OF SAMPLE -5



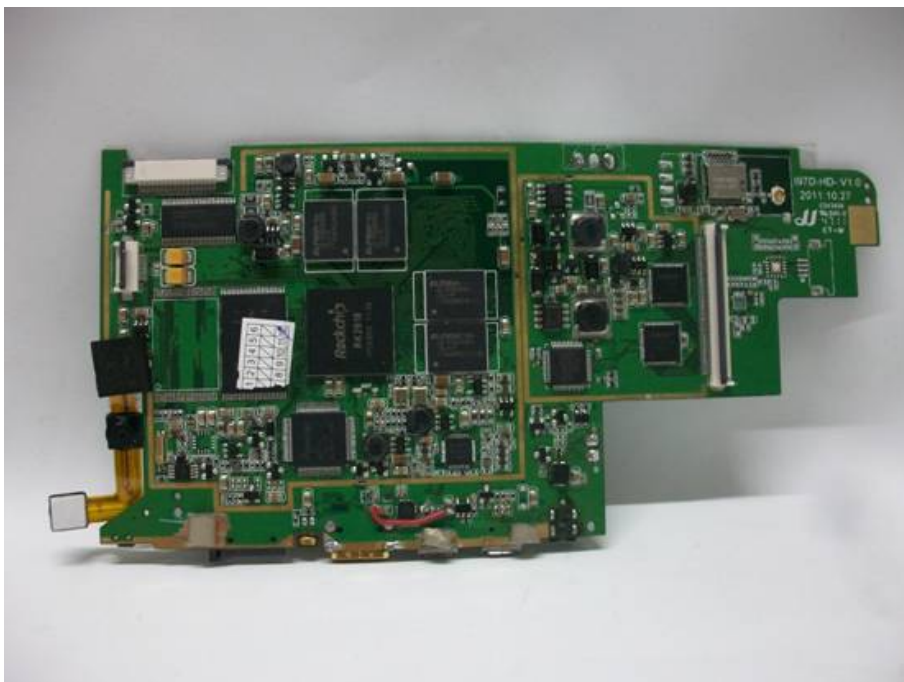
INTERNAL PHOTO OF SAMPLE -6



INTERNAL PHOTO OF SAMPLE -7



INTERNAL PHOTO OF SAMPLE -8



INTERNAL PHOTO OF SAMPLE -9



INTERNAL PHOTO OF SAMPLE -10

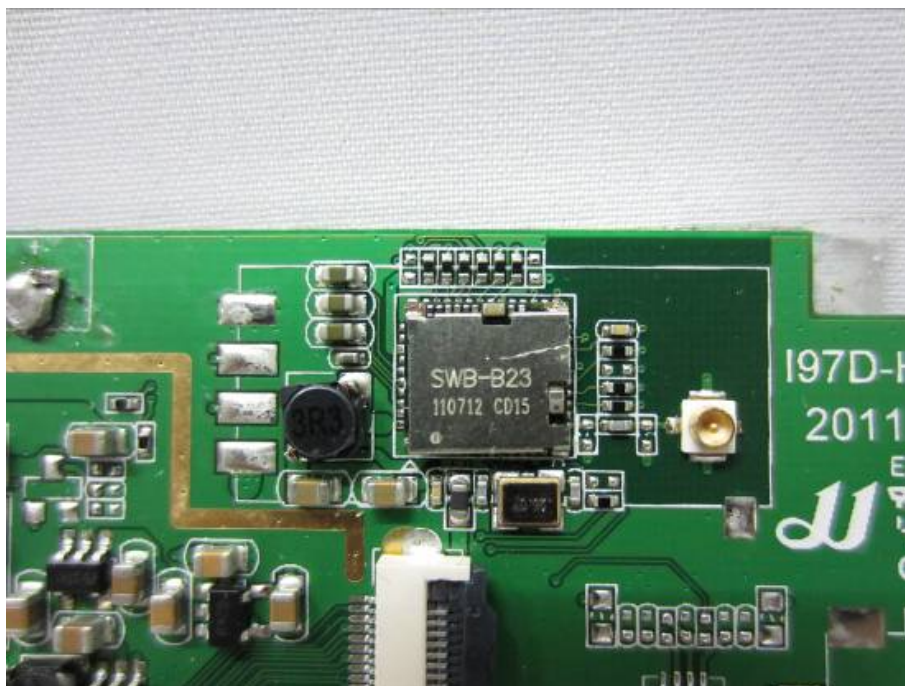




INTERNAL PHOTO OF SAMPLE -11

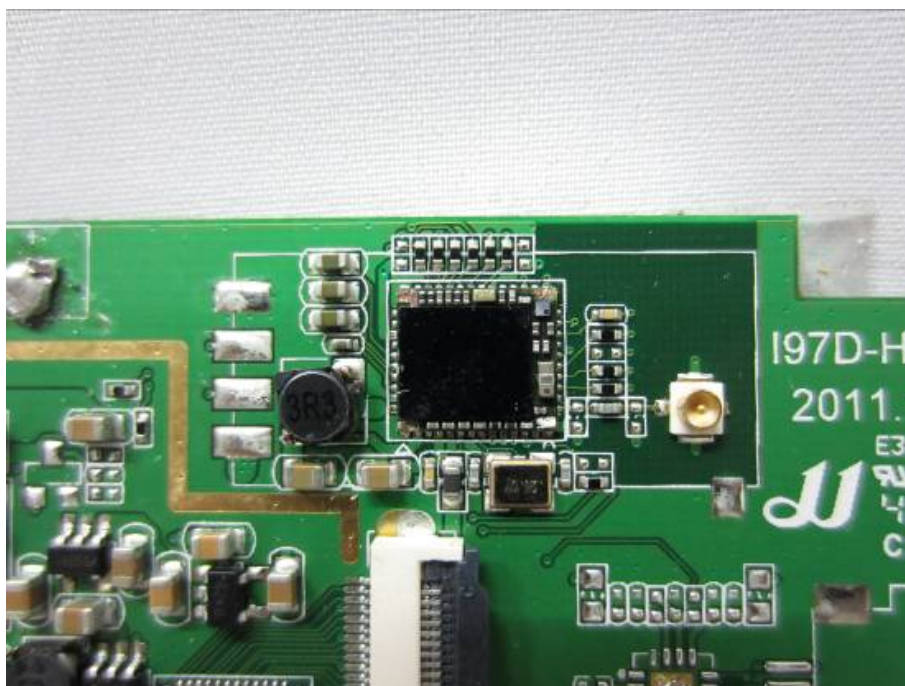


INTERNAL PHOTO OF SAMPLE -12





INTERNAL PHOTO OF SAMPLE -13



INTERNAL PHOTO OF SAMPLE -14



A long, thin, black electronic component, likely a sensor or actuator, is shown horizontally. It has gold-colored connectors at both ends. The central part features a white label with a barcode and text. Various small components and markings are visible along the length of the component.

