



maycom MP-50

User's Guide



Information to user : PART 15, PARAGRAPH 15.21 AND 15.105(b)

Changes or modifications not expressly approved by the party responsible for compliance could void the user's authority to operate the equipment

FCC Notice

NOTE : This equipment has been tested and found to comply with the limits for a Class B digital device, pursuant to Part 15 of the FCC Rules. These limits are designed to provide reasonable protection against harmful interference in a residential installation. This equipment generates, uses and can radiate radio frequency energy and, if not installed and used in accordance with the instructions, may cause harmful interference to radio communications. However, there is no guarantee that interference will not occur in a particular installation. If this equipment does cause harmful interference to radio or television reception, which can be determined by turning the equipment off and on, the user is encouraged to try to correct the interference by one or more of the following measures:

- Reorient or relocate the receiving antenna.
- Increase the separation between the equipment and receiver
- Connect the equipment into an outlet on a circuit different from that to which the receiver is connected.

Consult the dealer or an experienced radio/TV technician for help.

Contents

About your maycom MP-50 Player	4
Unpacking your maycom MP-50 Player	5
At a glance.....	6
Specifications	7
Installing Batteries.....	8
Exchanging Covers.....	9
Installing the USB driver in Windows	10
Copying files to the MP-50 Player in Windows	17
Macintosh Operation	19
Operating the MP-50 Player	21
Keylock	22
The Menu Key	22
The Menu / Menu Tree / Equalizer	23
Play Modes.....	24
Using the MMC Expansion Slot	25
Inserting a MultiMediaCard.....	25
Selecting the source for playback.....	26
Removing a MultiMediaCard.....	27
Installing Music Match Jukebox (Windows)	28
Encoding MP3 files from Audio CDs (Windows)	32
Static discharge.....	33
Storing & Handling	34
Troubleshooting.....	34

About your maycom MP-50 Player

The maycom MP-50 Player is the most convenient and easy-to-use way to enjoy music wherever you are.

In order to make the most of your MP-50 Player read this user's guide thoroughly.



Unpacking your MP-50 Player

The following components are in the MP-50 Player box:



MP-50 MP3 Player



Additional Cover



Stereo Headphones



Owner's Manual



CD-Rom



USB Cable



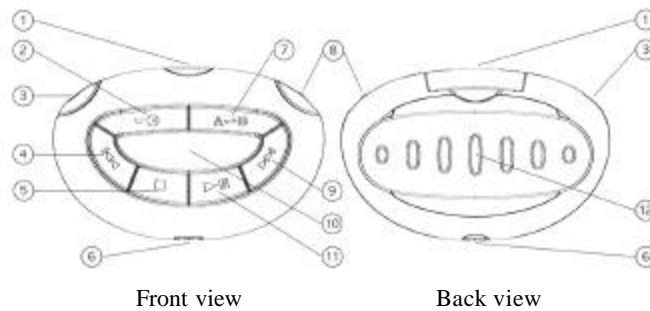
Carrying case(Optional)



Clip (Optional)

Note: All pictures are symbol pictures only. The actual look of items may vary.

At a glance



Front view

Back view

No	Description	Key pressed for approx. 2 seconds
1	MMC (MultiMediaCard) Door	-
2	Display artist & title (ID3 tags)	Activate/Deactivate Keylock
3	Headphones Jack	-
4	Previous Track	Rewind within track
5	Stop	Power On/Off
6	USB Jack	-
7	A-B Repeat	Format (erase) internal memory
8	Menu Key / Volume up/down	-
9	Next Track	Fast Forward within track
10	Display Window	-
11	Play/Pause	Select internal memory/MMC
12	Battery Cover	-

Specifications

MP-50 Player

- Maximum audio output power: 2x15mW
- Signal to noise ratio: >90dB
- Frequency response: 20 Hz – 20 KHz
- Maximum total harmonic distortion: 0.3%
- Headphone impedance: 16 ohm
- Power consumption at 128 kbps MP3 decoding at volume level 15, no EQ: approx. 90mA
- Playing time with new set of batteries: approx. 8-10 hours
- Dimensions (mm): W86 x D55 x H32
- Weight without batteries: 52g
- Power Supply: min. 2.4 VDC (2 pcs AAA Batteries or rechargeable batteries - not included)
- Internal memory: 64 MB
- Maximum supported MP3 bitrate: 256 kbps
- Supported ID3 Tags: v2.2/v2.3

Minimum system requirements Windows

- Operating system: Windows 98 SE or better
- CPU: Pentium 166 MHz or faster
- RAM: 32 MB or more
- CD-ROM drive
- USB interface

Minimum system requirements Macintosh

- Operating systems: - Mac OS 8.6 or better
- Mac OS X 10.1 or better
- CPU: Mac 604 Processor 120 MHz or faster
- RAM: 32 MB or more
- CD-ROM drive
- USB interface

Installing Batteries

Install 2 AAA batteries* into your MP-50. You may use alkaline batteries or NiMh rechargeable batteries (NOT NiCd).



1) To release battery cover press down where indicated.



2) Open the cover.



3) Insert batteries according to polarity diagram.



4) Replace the battery cover.

A new set of alkaline batteries provides an MP3 play time of approximately 8-10 hours.

*not included

Exchanging Covers



1) Open the MMC door. At the marking indicated in the above picture, gently lift the cover towards you until you hear a click.



2) Loosen the cover below the menu key and below the headphone jack.



3) The cover can now be removed.



4) To replace the cover simply snap it into place over the front of the MP-50 Player.

Never use force to remove the cover. Damaged covers are not covered by the warranty.

Installing the USB driver in Windows

- 1) Turn on your PC and the MP-50 Player.
- 2) Insert the MP-50 CD-Rom into your CD-Rom drive.
- 3) Connect the USB cable to your MP-50 Player where indicated:



Carefully open the USB door.



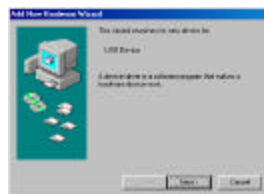
Plug in the smaller end of the USB cable.

- 4) Connect the larger end of the USB cable to your PC USB port.
- 5) Your PC will automatically detect MP-50. Depending on your version of Windows please turn to the appropriate page:

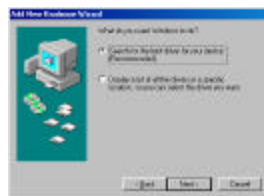
Windows 98	12
Windows 2000	14
Windows ME.....	16
Windows XP	16

Windows 98

- 1) Click "Next" to start the installation.



- 2) Select "Search for the best driver" and click "Next".



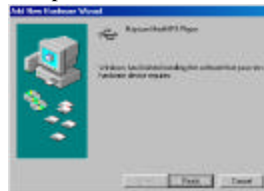
- 3) Select "Specify a location" and browse the CD to locate the correct path of the driver (e.g. D:\USB_Driver). Click "Next".



- 4) After locating the driver the system asks for confirmation.
Click "Next".



- 5) Click "Finish" to complete the installation. Turn to page 17.



Windows 2000

1) Click "Next" to start the installation.



2) Select "Search for a suitable driver" and click "Next".



3) Select "CD-ROM drives" and click "Next".



- 4) After locating the driver the system asks for confirmation.
Click "Next".

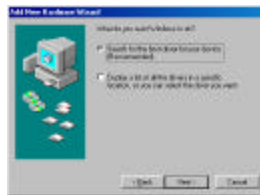


- 5) Click "Finish" to complete the installation. Turn to page 17.



Windows ME

- 1) Select "Automatic search" and click "Next". Windows ME will search the CD-ROM drive for the appropriate driver.



- 2) Click "Finish" to complete the installation. Turn to page 17.



Windows XP

- 1) Select "Install the software automatically" and click "Next".



- 2) Should the following message appear ignore it and click "Continue Anyway". Visit the support section of www.emaycom.com for further information on this message.



- 3) Click "Finish" to exit the Wizard.







After successful installation:

The driver installation has been completed. For information how to copy files continue on this page.

To install MusicMatch Jukebox see page 29.

Copying files to the MP-50 Player in Windows

- 1) Decide whether you want to access the internal memory or an MMC. To access an MMC, insert it into the MP-50 Player (see page 26) and switch to it (see page 27).
- 2) Connect the MP-50 16 Player to your PC.
- 3) In Windows Explorer find the drive letter representing the removable disk (Drive E: in our example below). If there is an MMC installed, the icon represents the MMC. If there is no MMC installed, it represents the internal memory. Some versions of Windows are able to display "maycom" as the disk name when the internal memory is being used.

	Internal Memory	MMC installed
Windows XP	 maycom(E:)	 UNTITLED (E:)
Other versions	 Removable Disk (E:)	 Removable Disk (E:)

- 4) Use Windows Explorer to copy the MP3 files from your harddisk to the MP-50 Player internal memory or your MMC. If you have encoded MP3 files with MusicMatch Jukebox these can typically be found in C:\My Documents\My Music.

Beware: Never insert or remove an MMC before having disconnected the MP-50 Player from the PC.

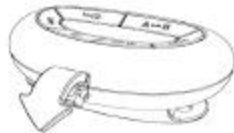
The MP-50 Player can also be used like a floppy disk. You may copy all types of files to the internal memory for portability. However, only MP3 files can be played by the MP-50 Player.

If you are using a MultiMediaCard, the MP-50 Player has the function of an MMC Reader (similar to a floppy disk drive). You may use it to read and write any data to or from the MMC. However, only MP3 files can be played by the MP-50 Player.

Macintosh Operation

Since the MP-50 Player is a USB mass storage class device, no driver needs to be installed.

- 1) Decide, whether you want to access the internal memory or an MMC. To access an MMC, insert it into the MP-50 Player (see page 26) and switch to it (see page 27).
- 2) Connect the USB cable to your MP-50 Player:



Carefully open the USB door.







Plug in the smaller end of the USB cable.

- 3) Connect the larger end of the USB cable to your Macintosh.
- 4) A removable disk icon appears on the desktop. If there is an MMC installed in the MP-50 Player, the icon represents the MMC. If there is no MMC installed, it represents the internal memory. See the table on page 21.
- 5) Copy files by using the drag & drop method. File names of MP3 files must end with .mp3 to be played by the MP-50 Player. If you use iTunes you may directly drag files from the playlist to the removable disk icon to copy them.
- 6) Eject (unmount) the removable disk (drag the icon into the trash), before disconnecting the MP-50 Player from your Macintosh.

Beware: Never insert or remove an MMC before having ejected and disconnected the MP-50 Player from the Macintosh.

If the internal memory is used, the volume's name is "maycom". If the MP-50 Player was connected to your Macintosh with an MMC installed, the name of the volume is the name of the MMC ("Untitled" in the example below).

	Internal Memory	MMC installed
Mac OS Classic		
Mac OS X		

The MP-50 Player can also be used like a floppy disk. You may copy all types of files to the internal memory for portability. However, only MP3 files can be played by the MP-50 Player.

If you are using a MultiMediaCard, the MP-50 Player has the function of an MMC Reader (similar to a floppy disk drive). You may use it to read and write any data to or from the MMC. However, only MP3 files can be played by the MP-50 Player.

Visit the MP3 zone at www.emaycom.com for MP3 & Macintosh MP3 software information.

Operating the MP-50 Player

Connect your earphone set to the earphone jack.



Use the 6 major keys for basic operation:




Key	Short Press	Long Press
	Stop	Power On/Off
	Play / Pause	Internal memory/MMC*
	Skip to previous song	Rewind
	Skip to next song	Fast Forward
	Display artist/title**	Keylock On/Off
A = B	A-B Repeat***	Format (erase) internal memory

* see page 27 for details.

** if the file does not contain a supported ID3 tag the filename will be displayed.

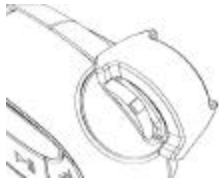
*** see Play Modes on page 25.

Keylock

Push and hold  to lock all keys and to protect current settings. To unlock, push and hold  once again until the  indication on the LCD disappears.

The Menu Key

Your MP-50 Player is equipped with a menu key. This key is used for the following functions:



Move the key to adjust the volume.

Within the menu use this same key to browse through the menu.



Push the key to enter the menu of the MP-50 Player.

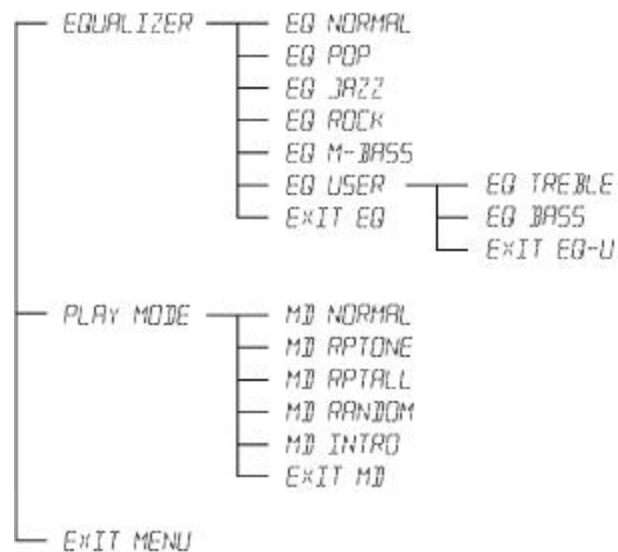
Within the menu push this same key to select the function displayed.

The Menu / Menu Tree / Equalizer

The following functions are controlled through the menu:

- Equalizer
- Play Mode

The menu tree below shows where you can find specific settings:



Use the Equalizer to adjust the sound to suit your personal preferences. If a setting other than "NORMAL" is active **EQ** is displayed on the LCD.

Play Modes

- Repeat one (RPT)

Select this function to repeat the current track. The LCD displays **RPT**.

- Repeat all (RPT ALL)

Select this function to repeat all the tracks. The LCD displays **RPT ALL**.

- Random (RND)

Select this function to switch playback to random mode. The LCD displays **RND**.

- Intro (INTRO)

Select this function to play the first 10 seconds of each track. The LCD displays **INTRO**.

- Normal

Select "Normal" to reset to normal mode.

- A-B Repeat

This function is controlled by the **A=B** key. Push **A=B** once to set the starting point (A) and push it again to set the end point (B) of the particular track you want to listen to in a loop. Pressing the **A=B** key, a third time cancels the A-B repeat function.

Using the MMC Expansion Slot

The MP-50 Player is equipped with an expansion slot for additional memory. You may use a MultiMediaCard (MMC) of any size. If an MMC is installed you can use the MP-50 Player as an MMC Reader. This means you can read and write files (not only MP3 files) to and from the MMC while the MP-50 Player is connected to your computer.

Inserting a MultiMediaCard



1) Open the MMC door.



2) Insert the MMC as shown.



3) Close the MMC door.

Selecting the source for playback

If you have a MultiMediaCard installed press ►|| for 2 seconds to switch from the internal memory to the MMC and vice versa. The display indicates which source is currently in use:



Internal memory in
use



MMC in use

Removing a MultiMediaCard



1) Open the MMC door and gently press the MMC in the direction shown.



2) The MMC will be released and should pop out. You may now remove the MMC.



3) Close the MMC door.

Installing Music Match Jukebox

Minimum system requirements

Operating system: Windows98 or later

CPU: Pentium 166MHz or better

RAM: 32MB or more

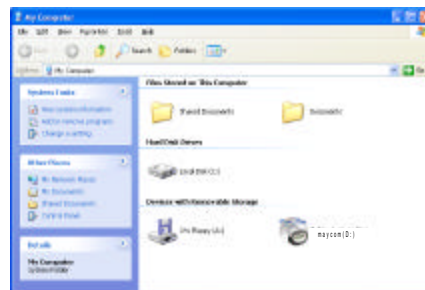
256 colours or better

4x speed CD-ROM drive

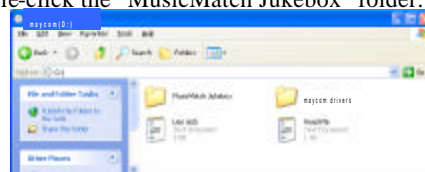
USB interface

Sound system: 16 bit or better

- 1) Turn on your PC.
- 2) Insert the MP-50 CD-Rom into your CD-Rom drive. Access the CD by double-clicking the icon representing the CD-Rom drive.



- 3) Double-click the "MusicMatch Jukebox" folder.



-

- [illegible]

- [illegible]

- 8) Choose whether you would like your listening preferences to be transferred to MusicMatch. Select "Yes" or "No". Then click "Next" to continue.

PERSONALIZE MY SYSTEM

Personalization Wizard

Click Next to continue the Personalization Wizard. The Personalization Wizard will help you choose the look and feel of your Windows XP desktop. You can choose the background image, the taskbar and start menu, and the sounds and screen saver. You can also choose the appearance of the desktop icons. Click Next to continue the Personalization Wizard.

Personalization Summary

The Personalization Wizard will help you choose the look and feel of your Windows XP desktop. You can choose the background image, the taskbar and start menu, and the sounds and screen saver. You can also choose the appearance of the desktop icons. Click Next to continue the Personalization Wizard.

☐ Show Personalization Wizard ☐ No

- 9) Choose "Express" installation, then click "Next".



- 10) Click "Finish" to complete the installation.



Encoding MP3 files from Audio CDs

- 1) Start Music Match Jukebox.
- 2) Insert an Audio CD into your CD-Rom drive.
- 3) Music Match Jukebox should automatically detect the CD. (If not, please ensure that MusicMatch Jukebox is selected as you default CD Player.)
- 4) Select the tracks in the recording dialog box which you would like to encode into MP3 files and edit the track information for identification.
- 5) Click "REC" to start encoding.
- 6) After encoding you will find the encoded files located in the "Music Library" (also in C:\My Documents\My Music). Use Windows Explorer to copy MP3 files to the MP-50 Player. See page 18 for details.

We recommend a bitrate of 128 kbps for MP3 encoding (CD quality) in order to keep the file size small. Your maycom MP-50 Player supports variable bit rates of up to 256 kbps.

If you experience any problem while using Music Match Jukebox, contact MusicMatch at:

http://www.musicmatch.com/common/contact_us.cgi

To submit an assistance request, visit

<http://www.musicmatch.com/form/support/customer/>

and send an e-mail describing your problem and including your e-Mail address.

Visit the MP3 Zone at www.emaycom.com for more MP3 information.

Static discharge

Your MP-50 Player consists of sophisticated and sensitive circuitry. There may be occasions when the player is affected by static discharge.

When you move around, your body naturally builds up some electricity, which can cause what is known as static discharge.

Should your MP-50 Player at any time appear to freeze operation, and you have already verified that the batteries are properly installed it is possible the player has been affected by static discharge.

To re-enable the unit, try removing and then re-installing the batteries of your player and then switching it on again.

Storing & Handling

- **Keep the MP-50 Player at room temperature .**
Direct sunlight or extreme temperatures can damage electronic products.
- **Keep the MP-50 Player away from moisture.**
Moisture or humidity may cause the MP-50 Player to short circuit. If exposed to moisture, immediately dry the player with a soft cloth.
- **Do not use the MP-50 Player outdoors in poor weather conditions, such as rain or lightning.**
- **Protect the MP-50 Player from shock.**
- **Do not expose the MP-50 Player to foreign substances or dust.**
- **Clean your MP-50 Player only with soft cloth.**
Do not use harsh cleaning agents or water.
- **Do not pull on the earphone set.**
Stretching the earphone set can lead to a noisy and unclear connection.

Troubleshooting

Visit the support area of www.emaycom.com for information on troubleshooting operating problems.



Maycom B/D, 280-5, Seoksu 2-Dong, Manan-Gu, Anyang-City,
Kyongki-Do, Korea

Tel : +82 (0)31-470-7700

Fax : +82 (0)31-472-3700

<http://www.emaycom.com>

e-mail : maycom@emaycom.com

Printed in Korea