

Model: LCDFSAMC04-WF

LED Hand Sanitizing Billboard

USER MANUAL



Read these instructions thoroughly before attempting to connect, operator adjust this Product. Retain the book for future reference.

Terraboost Media LLC

Terraboost Media®

Add: 3109 Grand Avenue #300Miami, Florida, U.S.A. 33133

Contents


18.5 Advertising Player User Manual	1
Safety Information	1
Before Start	2
Start with SD Card	2
Remote Control	3
Install DMB and start Server	3
Install DMB	3
Start Server	3
Add a Terminal	4
Connect to Server	5
Play pictures and videos	6
Log in the system	6
Upload pictures and videos to server	6
Task Programming	7
Other Functions	8
Firmware update	8
Language Setting	8
Terminal Brightness	9
Trouble List	9
LCD does not show online while checking from Browser?	9
No display or dark screen	9
No sound	9
LCD does not download files from the server while the status is online	9
Installation Guide	10

18.5 Advertising Player User Manual

Safety Information

1. The maximum ambient temperature should not exceed 40°C.
2. The LED Hand Sanitizing Billboard shall only used for I.T. Equipment.
3. The main plug is used as disconnect device, the socket-outlet shall be installed near the equipment and shall be easily accessible.



4.  Correct Disposal of this product. This marking indicates that this product should not be disposed with other household wastes throughout the EU. To prevent possible harm to the environment or human health from uncontrolled waste disposal, recycle it responsibly to promote the sustainable reuse of material resources. To return your used device, please use the return and collection systems or contact the retailer where the product was purchased. They can take this product for environmental safe recycling.
5. This product must not be disposed together with the domestic waste. This product has to be disposed at an authorized place for recycling of electrical and electronic appliances.
- 6.

CAUTION
RISK OF EXPLOSION IF BATTERY IS REPLACED
BY AN INCORRECT TYPE.
DISPOSE OF USED BATTERIES ACCORDING
TO THE INSTRUCTIONS

Warning: Changes or modifications to this unit not expressly approved by the party responsible for compliance could void the user's authority to operate the equipment.

NOTE: This equipment has been tested and found to comply with the limits for a Class B digital device, pursuant to Part 15 of the FCC Rules. These limits are designed to provide reasonable protection against harmful interference in a residential installation. This equipment generates, uses and can radiate radio frequency energy and, if not installed and used in accordance with the instructions, may cause harmful interference to radio communications.

However, there is no guarantee that interference will not occur in a particular installation. If this equipment does cause harmful interference to radio or television reception, which can be determined by turning the equipment off and on, the user is encouraged to try to correct the interference by one or more of the following measures:

- ☐ Reorient or relocate the receiving antenna.
- ☐ Increase the separation between the equipment and receiver.
- ☐ Connect the equipment into an outlet on a circuit different from that to which the receiver is connected.
- ☐ Consult the dealer or an experienced radio/TV technician for help.
- ☐ Shielded cables must be used with this unit to ensure compliance with the Class B FCC limits.

In order to comply with FCC's RF radiation exposure limits for general population/uncontrolled exposure, the antenna(s) used for this transmitter must be installed to provide a separation distance of at least 20 cm from all persons and must not be collocated or operating in conjunction with any other antenna or transmitter.

Before Start

Before using, make sure that the components are enough (Player, SD Card ,Adapter , Remote Control).

Note : SD Card has installed the player running programs, please do not format it ,do not do anything to SD Card .

Start with SD Card

Start to run the play from SD card ,we need following steps :

Insert SD card into the SD Card slot , then power on , waiting about 1 minute ,you can see the desktop as below Chart-1:



Chart-1

Remote Control

Press *#9879# , and input password 123456 you can enter Terminal Config

Here you need to config the terminal Server , config the terminal Network (including IP, WIFI if necessary).

- Terminal Server : input the Server IP number , Download Port 60001, Control Port 60001 , Serial Number ,see Chart-2:



Chart-2

Note : Download port and control port are all 60001, they can not be changed. Remember the Serial number

- Terminal Network

Ethernet Config: set reasonable IP , gateway , Subnet , DNS etc.If you want to use WIFI , see below :

WIFI Config : WIFI is on , Mode is DHCP , ESSID is your Router name , password is your Router access password , Encro Type is as same as your Router.

When you config all OK , then reboot terminal ..it takes about 1 minute.

Install DMB and start Server

Install DMB

In order to control the terminal , we need to install DMB BS3 Software , the installation details please see specification.

Start Server

Server Software can install easily and fast , no special setting ,just next.

After your installation ,please open IE browse , input http:// Sever IP address: 8080/dmb . the login name and password are all root. as below: chart-3:



Chart-3

First , enter into the Media Box Management :see chart-4:



Chart-4

Add a Terminal

Please according to Advertising machine the actual board type and resolution, select the terminal type and output mode, output mode, the wrong choice may lead to the LCD screen can not display properly or restart . as chart-5:

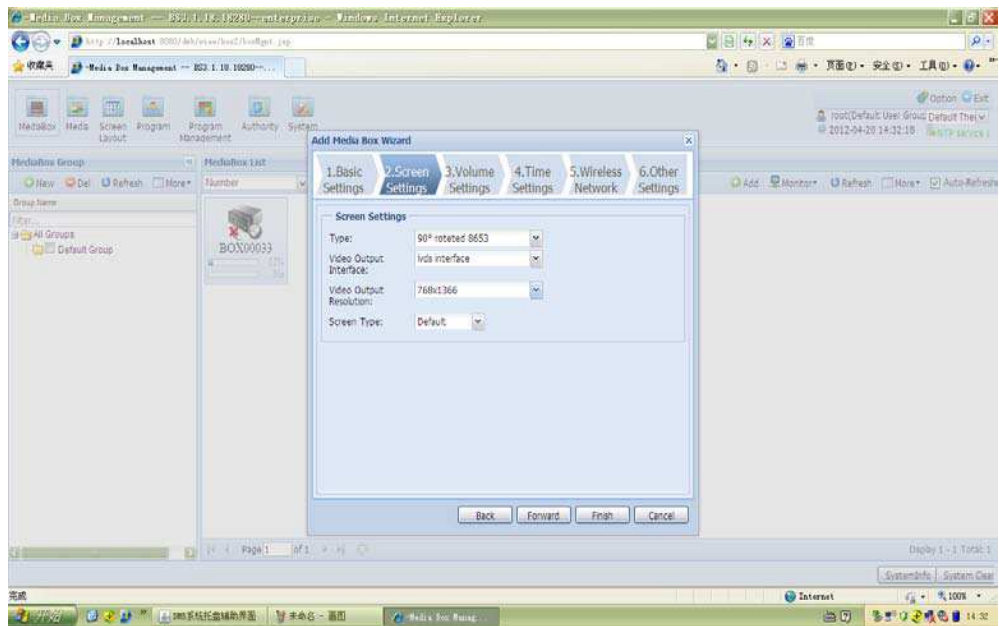


Chart-5

Connect to Server

Please make sure the configuration you set in Terminal is right.

Build communication between terminal and computer with your wifi network.

We control the Terminal through your Router.

You need to set network between your computer and your Router. See Chart 6:

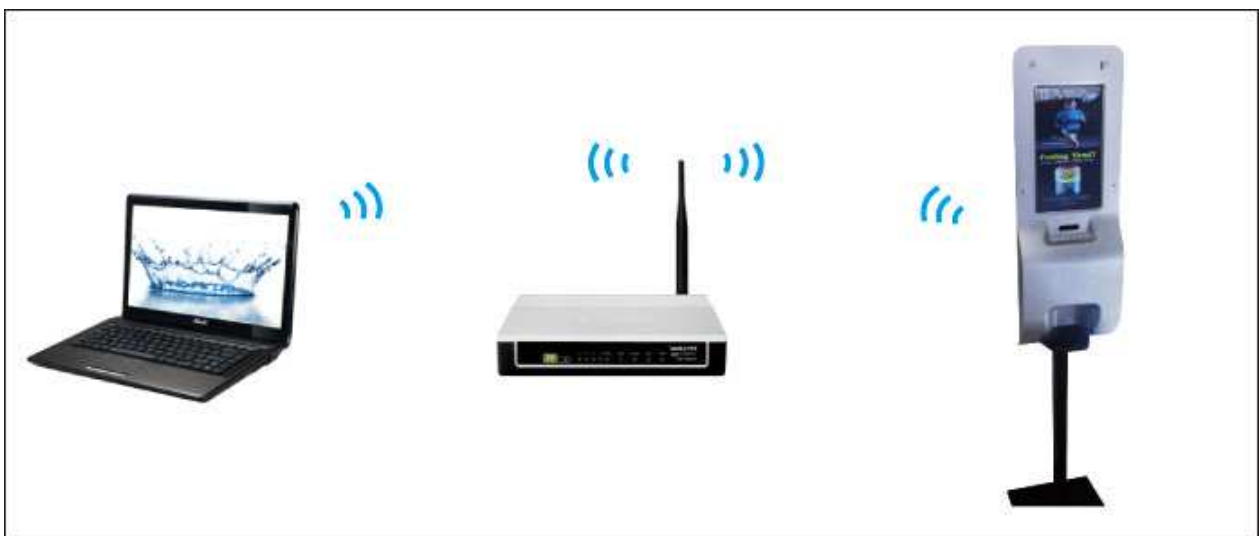


Chart-6

Play pictures and videos

Log in the system

After completing installation of Server, user can open a browser and input `http://<Server IP>:8080/dmb` in address bar to open login page as shown in chart-3

Upload pictures and videos to server

1、Media Management

add media files, upload media files to Server, you can add video, picture, text file , and music etc. Please choose Media Management , select option the details

Select uploaded videos from local , select group, then “upload”. as below chart-7:

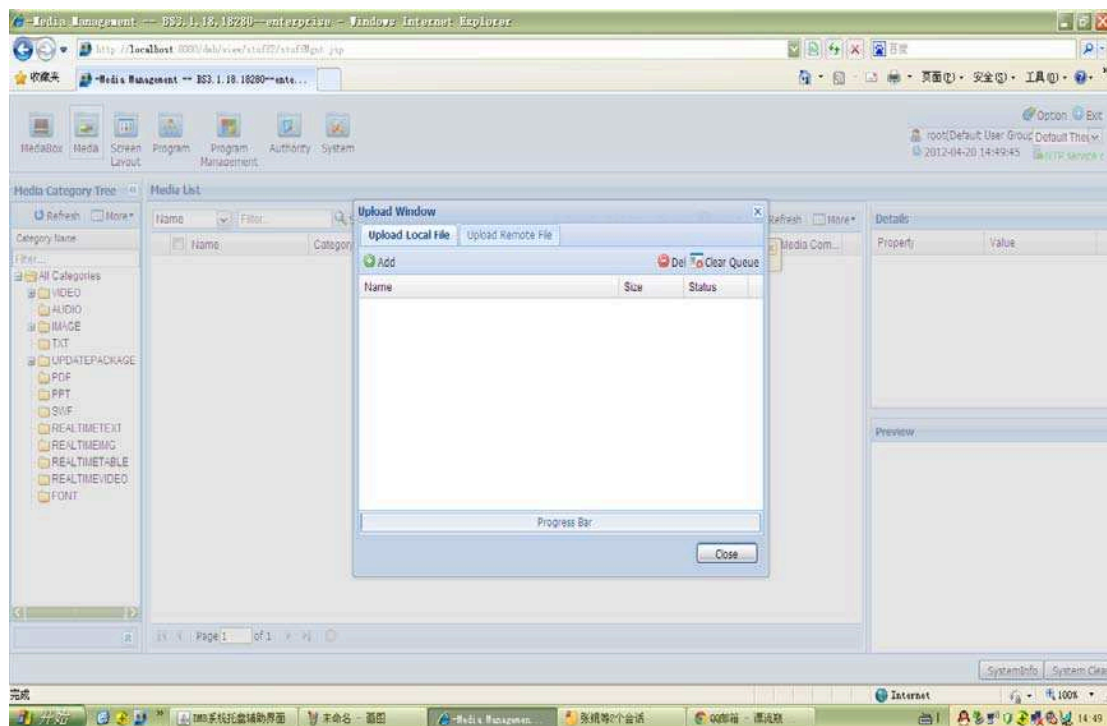


Chart-7

when uploading is finished , pleas wait the Server to convert videos files to the specified content , then click “approval” . if the files are not audited and passed , the files can not be used. See chart-8:

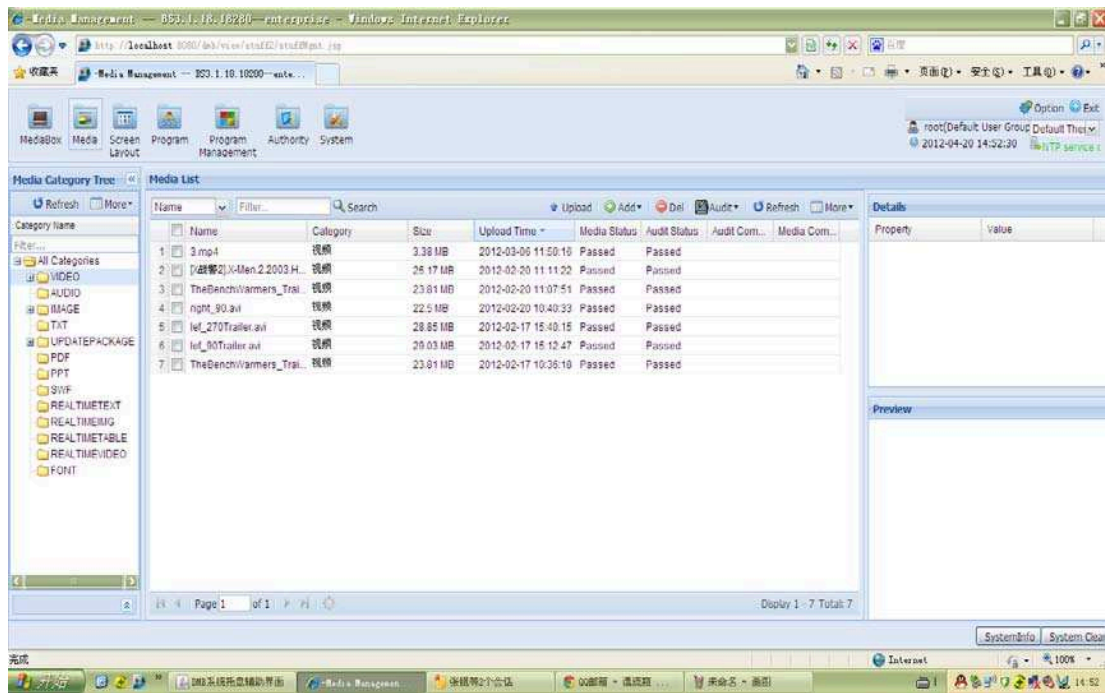


Chart-8

Task Programming

1、Choose Style

Click “Task Programming”, then select Styles (your choose must be right with the terminal you want to add in),then “confirm”. Users can enter the style management page by clicking , No default style is available when logging the system. Users have to click “import”.

(sigma8653 facilities should have corresponding styles respectively, or troubles will be caused) See chart-9:

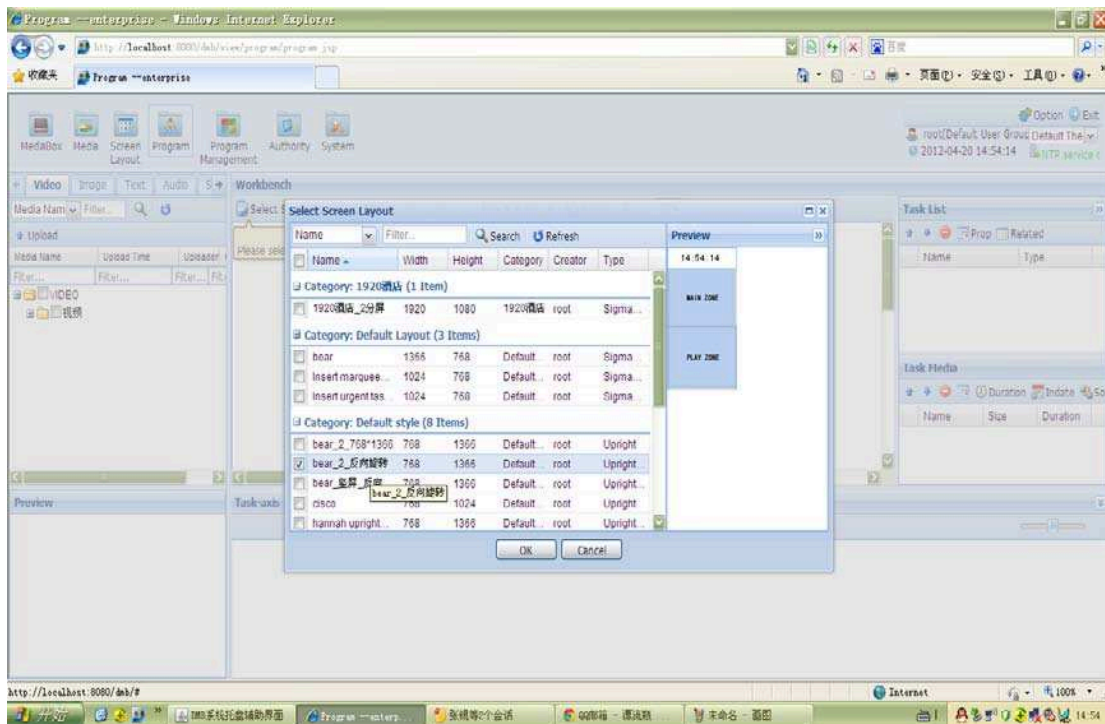


Chart-9

Add Medias

Drag videos from the left media library to the main zone or playing zone , etc. when programming is finished , save and audit .choose “Save & Audit”. see as below chart-10:

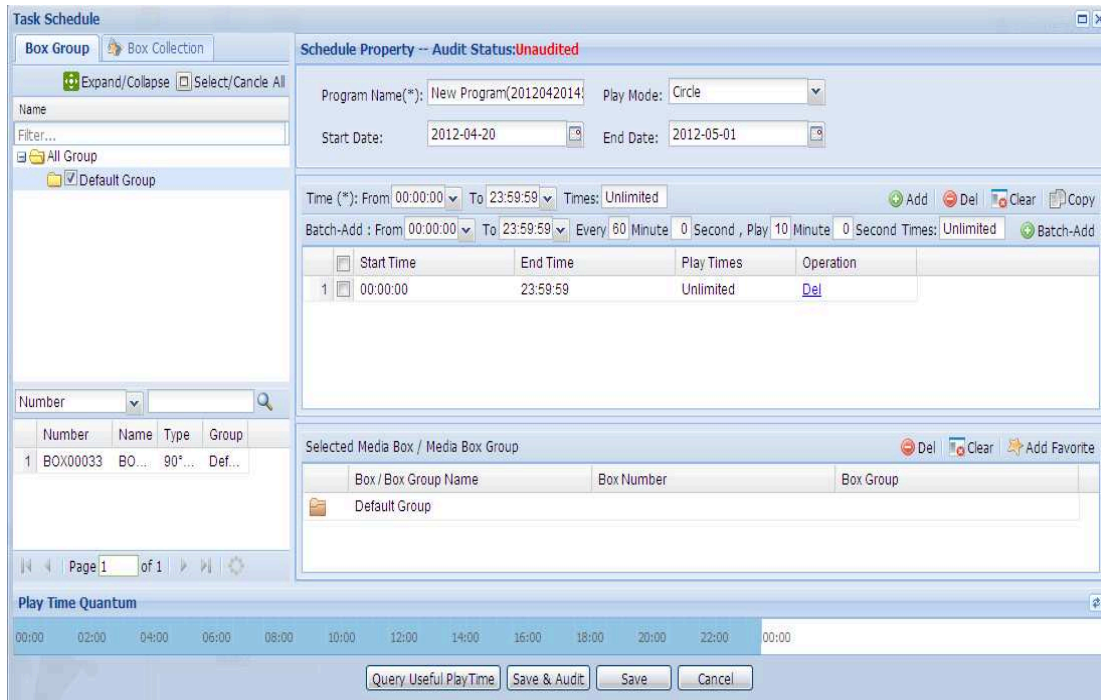


Chart-10

Other Functions

Firmware update

1 Terminal release U disk in the directory Upgrade Kit copied to the root directory of U, such as Chart-11:



Chart-11

Make sure SD card is format as FAT32 . insert SD card into SD slot . insert U disk.. then turn on power ,wait about 1 minute and the indicator becomes from red to off . then unplug U disk ,turn off power , and turn on power again . about 1 minute , it is OK

Language Setting

You can set terminal language : English or Simple Chinese using Remote Control .

Also ,you can set DMB Server software language as English or Simple Chinese ...

Note : when you change your computer IP , you have to reconfig the DMB and restart Server .

Terminal Brightness

You can set terminal brightness and so on . see details in terminal config .

Trouble List

Please use the following list to do some trouble for the product if necessary.

LCD does not show online while checking from Browser?

Check if LCD connected to the WIFI router by the following steps:

- 1 login the terminal IP in IE browser
- 2 select “Network status” and click to see the details . If the WIFI connection is successful , you can see there an IP address shown there . If not , re-scan the WIFI networking and make sure the password / ESSID/Encro Type are all right .
- 3 verify the connection by checking if a computer connected to the same WIFI router can access the internet.
- 4 Check the Server address setting is correct.
- 5 Check if there any Firewall in front of Router.

No display or dark screen

- 1 Check power adaptor if it is working ok
- 2 Check the connection of power adaptor

No sound

- 1 Check if the setting is mute or sound level 0
- 2 Check if the video clip has sound track

LCD does not download files from the server while the status is online

- 1 Check if the LCD is assigned to a group and also the group has a valid playlist . if playlist and group setting are correct ,try to restart the terminal .
- 2 Check the network status is ok

DIGITAL LED TOUCH FREE SANITIZING DISPENSER

2.4L POWER BOOST VERSION (LED DISPLAY) WIFI or 3G OPERATED



ITEM PARAMETERS

LED Screen	18.5 inch (diagonal) Digital LED Panel 3:4
Resolution	1366x768 (RGB)
Brightness	250nits
Contrast Ratio	1000:1
Power Supply	Adapter, Input: AC100-240V;
Power Consumption	Output: 12V/3A 30W (max)
	SD card 4G
Memory Card	Embedded Linux OS
File System	

SUPPORTED FILE FORMATS

Supported Video	MPEG-1, MPEG-2 MP@HL, MPEG-4.2 ASP@L5, MPEG-4.10 (H.264) AP@L3, MP@L4.0 and HP@L4.0, WMV9 MP@HL, SMPTE421M (VC-1) MP@HL and AP@L3
Supported Photo	BMP, JPG, JPEG, PNG, GIF
Supported Audio	Dolby Digital 5.1, Dolby Digital Plus 7.1, Dolby TrueHD 7.1, DTS 5.1 DTS-HD 7.1, MPEG-1
	Layers I, II and III (MP3) 2.0, MPEG-4 AAC-LC 5.1, M E PG-4 HE-AAC 5.1 MPEG-4 BSAC 2.0,
	WMA9 2.0, WMA9 Pro 5.1, DVD-Audio with MLP option, Apple iTunes 2.0 (no DRM),
	ATRAC3 2.0, 24-bit linear PCM 7.1

DIGITAL LED DISPENSER ASSEMBLY INSTRUCTIONS

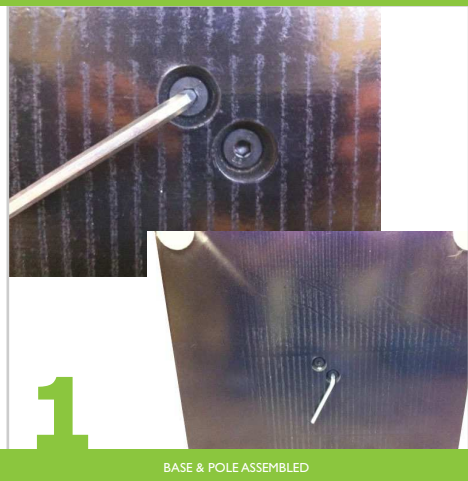
The enclosed pre-numbered list of hardware parts along with step-by-step directions will enable you to successfully assemble the unit

ITEM #	DESCRIPTION	QTY
1	Plastic Display Housing	1
2	Black Plastic Knobs	2
3	Pole (optional)	1
4	Base (optional)	1
5	Automatic Dispenser Module	1
6	Bolts with allen Head for Base	2
7	18.5 LED Screen Panel	1
8	Small Screw to Lock Dispenser	4
9	2.4L Tazza Sanitizer Bottle	2
10	Wall Mount Kit	1
11	Pole Mount Kit	1
12	Head Shoulder Screws for LED	4
13	AC Adapter	1
	TOOLS INCLUDED	QTY
	Allen Wrenches	2



Instructions to Mount LED Screen Power Boost Dispenser to Base & Pole Set

Base & Pole Installation (Items *3,4,6)



Insert the two bolts with the Allen head (item #6) into the two holes on the bottom of the base (item #4) and screw into the pole (item #3) with the Allen Wrench provided as tight as possible.

Mounting the Plastic Display Housing to the Pole & Base (Item *1)



Lift up front cover of the dispenser to match the two holes in the back of the plastic housing with the two holes in the pole. Screw either the two black plastic knobs (Item #2) or the two bolts, washers, and nuts from the pole mount kit (Item #11) into place to secure the dispenser housing to the pole. Hand tighten black knobs or use two 7/16 socket or combination wrenches not included for bolt/nut method.

Install Batteries & Automatic Dispenser STEP Module (Item *5)



Locate the battery compartment on the right side of the module and slide it open to insert the 4 AA Alkaline batteries (batteries provided). Click the 'on/off' switch to 'on'. A red blinking light may be an indication of an improper installation. Take the module (as pictured) and press it against the inside of the dispenser housing and slide down until it clicks into place.

FOR MORE INFORMATION, PLEASE CONTACT US AT: advertising@terraboost.com
877-837-7210 | www.terraboost.com

DIGITAL LED DISPENSER ASSEMBLY INSTRUCTIONS

The enclosed pre-numbered list of hardware parts along with step-by-step directions will enable you to successfully assemble the unit

Install 2.4L Tazza® Sanitizer Bottle
(Item #9)



BOTTLE CORRECTLY IN CHAMBER

Remove the pin stopper mechanism from the dispenser module and insert the bottle with the nozzle facing downward.

Completed Dispenser &
Bottle Installation



DISPENSER & BOTTLE CORRECT IN PLACE

Replace the pin stopper mechanism to secure the bottle in place as pictured.

Prepare LED Screen for Mounting



DO NOT OVER TIGHTEN

Take four (4) black head shoulder screws (Item #12) and hand tighten into the four holes on the back of the LED screen (Item #7).

Plug LED Screen In



CORRECT AC ADAPTER INSTALLATION

The AC adapter/power cord (item #13) should be threaded through the unit when you open up the package. Take the AC adapter and plug one end into the wall and the other end into the LED screen (item #7) as pictured above. Please note AC Adaptor power brick will rest in provided cubby.

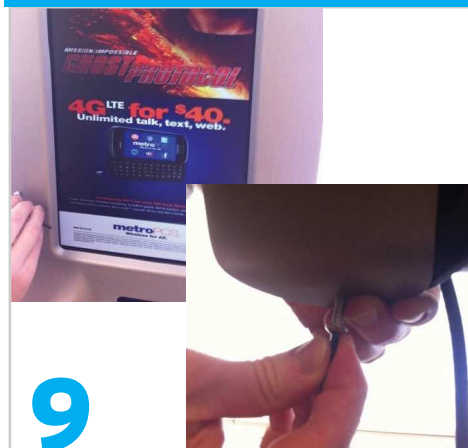
Install LED Screen to Dispenser Housing



SLIDE DOWN TO LOCK INTO PLACE

Position the four (4) black head shoulder screws (Item #12) that are now screwed into the back of the LED screen (item #7) into the grooves on the back of the display housing (item #1) and slide into place.

Lock The Display



USE ALL FOUR LOCKS

Take the four (4) small screws to lock the dispenser (item #8) and place into the four holes located in the middle and bottom of the display housing on both the right and left sides (item #1). Please note to lock dispenser only after initial LED screen setup including connecting to WiFi or 3G network.

FOR MORE INFORMATION, PLEASE CONTACT US AT: advertising@terraboost.com
877-837-7210 | www.terraboost.com

DIGITAL LED DISPENSER ASSEMBLY INSTRUCTIONS

The enclosed pre-numbered list of hardware parts along with step-by-step directions will enable you to successfully assemble the unit

Instructions to Mount LED Screen Power Boost Dispenser to the Wall

Position Dispenser on Wall



Position the bottom of the display housing (item #1) approximately 38" from the ground.

Mounting the Plastic Display Housing to the Wall



Making sure the display housing is level, drill a 1/4" pilot hole into the wall in 6 locations through the provided holes in the plastic display housing (four holes recommended at the top with two holes in the middle of the bottom section). Based on the surface you are mounting to, use anchors and the supplied screws and washers from the wall mount kit to secure the display housing to the wall (item #10) using a #2 Philips bit for electrical drill or #2 Philips screwdriver (not included).

Install Batteries & Automatic Dispenser STEP Module (Item #5)



Locate the battery compartment on the right side of the module and slide it open to insert the 4 AA Alkaline batteries in the proper orientation (batteries provided). Click the on/off switch to on. A red blinking light may be an indication of an improper installation. Take the module (as pictured) and press it against the inside of the dispenser housing and slide down until it clicks into place.

Install 2.4L Tazza® Sanitizer Bottle (Item #9)



Remove the pin stopper mechanism from the dispenser module and insert the bottle with the nozzle facing downward.

Completed Dispenser & Bottle Installation



Replace the pin stopper mechanism to secure the bottle in place as pictured.

Prepare LED Screen for Mounting



Take four (4) black head shoulder screws (Item #12) and hand tighten into the four holes on the back of the LED screen (Item #7).

FOR MORE INFORMATION, PLEASE CONTACT US AT: advertising@terraboost.com
877-837-7210 | www.terraboost.com

DIGITAL LED DISPENSER ASSEMBLY INSTRUCTIONS

The enclosed pre-numbered list of hardware parts along with step-by-step directions will enable you to successfully assemble the unit

Plug LED Screen In



CORRECT AC ADAPTER INSTALLATION

The AC adapter/power cord (item #13) should be threaded through the unit when you open up the package. Take the AC adapter and plug one end into the wall and the other end into the LED screen (item #7) as pictured above. Please note AC Adaptor power brick will rest in provided cubby.

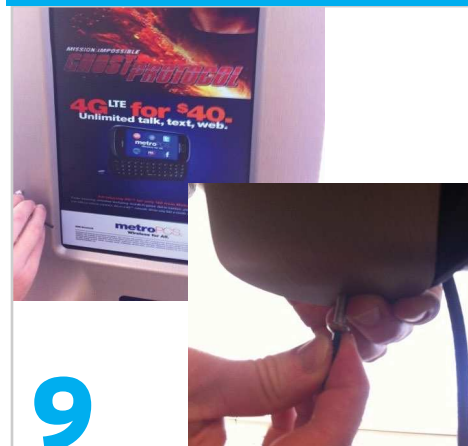
Install LED Screen to Dispenser Housing



SLIDE DOWN TO LOCK INTO PLACE

Position the four (4) black head shoulder screws (Item #12) that are now screwed into the back of the LED screen (item#7) into the grooves on the back of the display housing (item #1) and slide into place.

Lock The Display



USE ALL FOUR LOCKS

Take the four (4) small screws to lock the dispenser (item #8) and place into the four holes located in the middle and bottom of the display housing on both the right and left sides (item #1). Please note to lock dispenser only after initial LED screen setup including connecting to WiFi or 3G network.

LED Dispenser Properly Mounted on the Pole



LED Dispenser Properly Mounted on the Wall



FOR MORE INFORMATION, PLEASE CONTACT US AT: advertising@terraboost.com
877-837-7210 | www.terraboost.com

Model: LCDFSAMC04-WF

Read these instructions thoroughly before attempting to connect,
operator adjust this Product. Retain the book for future reference.

Terraboost Media LLC

Terraboost Media®

Add: 3109 Grand Avenue #300Miami, Florida, U.S.A. 33133