

The University of Michigan
Radiation Laboratory
3228 EECS Building
Ann Arbor, MI 48109-2122
Tel: (734) 764-0500

Measured Radio Frequency Emissions
From

Valeo/Saturn Ion RKE Transmitter

Report No. 415031-199
March 4, 2004

Copyright © 2004

For:
Valeo Switches and Detection Systems
3000 University Drive
Auburn Hills, MI 48362

Contact:
Iulian Ciotlos
E-mail: iulian.ciotlos@valeo.com
Tel: (248) 340-4202
Fax: (248) 371-1237
PO: 4500078882

Measurements made by:

Valdis V. Liepa

Tests supervised by:
Report approved by:


Valdis V. Liepa
Research Scientist

Summary

Tests for compliance with FCC Regulations, Part 15, Subpart C, and for compliance with Industry Canada RSS-210, were performed on Valeo/Saturn Ion RKE transmitter. This device is subject to the Rules and Regulations as a transmitter and as a digital device.

In testing performed between December 12, 2003 and March 3, 2004, the device tested in the worst case met the allowed specifications for radiated emissions by 2.6 dB at fundamental and by 1.7 dB at harmonics (see p. 6). Besides harmonics, there were no other significant spurious emissions found; emissions from digital circuitry were negligible. Since the device is powered by a 3-volt battery, the line conductive regulations do not apply.

1. Introduction

Valeo/Saturn Ion RKE Transmitter was tested for compliance with FCC Regulations, Part 15, adopted under Docket 87-389, April 18, 1989, and with Industry Canada RSS-210, Issue 5, dated November, 2001. The tests were performed at the University of Michigan Radiation Laboratory Willow Run Test Range following the procedures described in ANSI C63.4-1992 "Methods of Measurement of Radio-Noise Emissions from Low-Voltage Electrical and Electronic Equipment in the Range of 9 kHz to 40 GHz". The Site description and attenuation characteristics of the Open Site facility are on file with FCC Laboratory, Columbia, Maryland (FCC Reg. No: 91050) and with Industry Canada, Ottawa, ON (File Ref. No: IC 2057).

2. Test Procedure and Equipment Used

The pertinent test equipment commonly used in our facility for measurements is listed in Table 2.1 below. The middle column identifies the specific equipment used in these tests.

Table 2.1. Test equipment.

Test Instrument	Eqpt Used	Manufacturer/Model
Spectrum Analyzer (0.1-1500 MHz)		Hewlett-Packard, 182T/8558B
Spectrum Analyzer (9kHz-22GHz)	X	Hewlett-Packard 8593A SN: 3107A01358
Spectrum Analyzer (9kHz-26GHz)	X	Hewlett-Packard 8593E, SN: 3412A01131
Spectrum Analyzer (9kHz-26GHz)		Hewlett-Packard 8563E, SN: 3310A01174
Spectrum Analyzer (9kHz-40GHz)		Hewlett-Packard 8564E, SN: 3745A01031
Power Meter		Hewlett-Packard, 432A
Power Meter		Anritsu, ML4803A/MP
Harmonic Mixer (26-40 GHz)		Hewlett-Packard 11970A, SN: 3003A08327
Harmonic Mixer (40-60 GHz)		Hewlett-Packard 11970U, SN: 2332A00500
Harmonic Mixer (75-110 GHz)		Hewlett-Packard 11970W, SN: 2521A00179
Harmonic Mixer (140-220 GHz)		Pacific Millimeter Prod., GMA, SN: 26
S-Band Std. Gain Horn		S/A, Model SGH-2.6
C-Band Std. Gain Horn		University of Michigan, NRL design
XN-Band Std. Gain Horn		University of Michigan, NRL design
X-Band Std. Gain Horn		S/A, Model 12-8.2
X-band horn (8.2- 12.4 GHz)		Narda 640
X-band horn (8.2- 12.4 GHz)		Scientific Atlanta , 12-8.2, SN: 730
K-band horn (18-26.5 GHz)		FXR, Inc., K638KF
Ka-band horn (26.5-40 GHz)		FXR, Inc., U638A
U-band horn (40-60 GHz)		Custom Microwave, HO19
W-band horn(75-110 GHz)		Custom Microwave, HO10
G-band horn (140-220 GHz)		Custom Microwave, HO5R
Bicone Antenna (30-250 MHz)	X	University of Michigan, RLBC-1
Bicone Antenna (200-1000 MHz)	X	University of Michigan, RLBC-2
Dipole Antenna Set (30-1000 MHz)	X	University of Michigan, RLDP-1,-2,-3
Dipole Antenna Set (30-1000 MHz)		EMCO 2131C, SN: 992
Active Rod Antenna (30 Hz-50 MHz)		EMCO 3301B, SN: 3223
Active Loop Antenna (30 Hz-50 MHz)		EMCO 6502, SN:2855
Ridge-horn Antenna (300-5000 MHz)	X	University of Michigan
Amplifier (5-1000 MHz)	X	Avantak, A11-1, A25-1S
Amplifier (5-4500 MHz)	X	Avantak
Amplifier (4.5-13 GHz)		Avantek, AFT-12665
Amplifier (6-16 GHz)		Trek
Amplifier (16-26 GHz)		Avantek
LISN (50 µH)		University of Michigan
Signal Generator (0.1-2060 MHz)		Hewlett-Packard, 8657B
Signal Generator (0.01-20 GHz)		Hewlett-Packard

3. Configuration and Identification of Device Under Test

The DUT is a four-button low power RKE transmitter designed to send identification and control signals to a companion receiver. It is activated by pushing any one of the buttons, thus sending an ID and particular control signal, such as to unlock the door. The emission consists of two (repeated) words each 116 ms long and lasts 380 ms. The information is Manchester format encoded and ASK modulated on 315.0 MHz carrier stabilized by a SAW resonator. The DUT was designed by Valeo Switches and Detection Systems, 3000 University Drive, Auburn Hills, MI 48362 in conjunction with Kell Laboratories, Inc. It is identified as:

Valeo/Saturn Ion RKE Transmitter
Model: IONRKETX
SNs: PROD#3, FCCTEST#1
PN: 10357131
FCC ID: N5F250738
IC: 3248A-250738

For the tests two devices were provided. One with normal operating mode (PROD#3) and was used to determine transmission characteristics and the duty factor. The other (FCCTEST#1) was modified in software to transmit either CW or continuously repeated code. The CW was used for radiated emission measurements and continuous pulsed was used for occupied bandwidth measurements.

3.1 EMI Relevant Modifications

No modifications were made to the DUT by this laboratory.

4. Emission Limits

4.1 Radiated Emission Limits

The DUT tested falls under the category of an Intentional Radiators and the Digital Devices. For FCC, it is subject to Part 15, Subpart C, (Section 15.231), Subpart B, (Section 15.109), and Subpart A, (Section 15.33). For Industry Canada it is subject to RSS-210, (Sections 6.1 and 6.3). The applicable testing frequencies with corresponding emission limits are given in Tables 4.1 and 4.2 below. As a digital device, the DUT is considered as a Class B device.

Table 4.1. Radiated Emission Limits (FCC: 15.33, 15.35, 15.109; IC: RSS-210, 6.2.2(r)).
(Digital Class B)

Freq. (MHz)	E _{lim} (3m) μ V/m	E _{lim} dB(μ V/m)
30-88	100	40.0
88-216	150	43.5
216-960	200	46.0
960-2000	500	54.0

Note: Average readings apply above 1000 MHz (1 MHz BW)
Quasi-Peak readings apply to 1000 MHz (120 kHz BW)

Table 4.2. Radiated Emission Limits (FCC: 15.231(b), 15.205(a); IC: RSS-210; 6.1, 6.3).
(Transmitter)

Frequency (MHz)	Fundamental Ave. E_{lim} (3m)		Spurious** Ave. E_{lim} (3m)	
	(μ V/m)	dB (μ V/m)	(μ V/m)	dB (μ V/m)
260.0-470.0	3750-12500*		375-1250	
322-335.4 399.9-410 608-614	Restricted Bands		200	46.0
960-1240 1300-1427 1435-1626.5 1660-1710 1718.9-1722.2 2200-2300	Restricted Bands		500	54.0

* Linear interpolation, formula: $E = -7083 + 41.67 \cdot f$ (MHz)

** Measure up to tenth harmonic; 120 kHz BW up to 1 GHz, 1 MHz BW above 1 GHz

4.2 Conductive Emission Limits

The conductive emission limits and tests do not apply here, since the DUT is powered by one internal 3-volt battery.

5. Radiated Emission Tests and Results

5.1 Anechonic Chamber Measurements

To familiarize with the radiated emission behavior of the DUT, the DUT was first studied and measured in a shielded anechoic chamber. In the chamber there is a set-up similar to that of an outdoor 3-meter site, with a turntable, an antenna mast, and a ground plane. Instrumentation includes spectrum analyzers and other equipment as needed.

In testing for radiated emissions, the transmitter was activated by pushing the button for repeated pulse emission. It was placed on the test table flat, on its side, or on its end. By pushing the button again, emissions cease.

In the chamber we studied and recorded all the emissions using a bicone antenna up to 300 MHz and a ridged horn antenna above 200 MHz. The measurements made in the chamber below 1 GHz are used for pre-test evaluation only. The measurements made above 1 GHz are used in pre-test evaluation and in the final compliance assessment. We note that for the horn antenna, the antenna pattern is more directive and hence the measurement is essentially that of free space (no ground reflection). Consequently it is not essential to measure the DUT for both antenna polarizations, as long as the DUT is measured on all three of its major axis. In the chamber we also recorded the spectrum and modulation characteristics of the carrier. The results are presented in subsequent sections. We also note that in scanning from 30 MHz to 3.15 GHz using bicone and the ridge horn antennas, there were no other significant spurious emissions observed.

5.2 Outdoor Measurements

After the chamber measurements, the emissions were re-measured on the outdoor 3-meter site at fundamental and harmonics up to 1 GHz using tuned dipoles and/or the high frequency bicone.

Photographs in Appendix (at end of this report) show the DUT on the open in site table (OATS).

5.3 Computations and Results

To convert the dBm measured on the spectrum analyzer to dB(μ V/m), we use expression

$$E_3(\text{dB}\mu\text{V/m}) = 107 + P_R + K_A - K_G + K_E$$

where P_R = power recorded on spectrum analyzer, dB, measured at 3m
 K_A = antenna factor, dB/m
 K_G = pre-amplifier gain, including cable loss, dB
 K_E = pulse operation correction factor, dB (see 6.1)

When presenting the data, at each frequency the highest measured emission under all of the possible orientations is given. Computations and results are given in Table 5.1. There we see that the DUT meets the limits by 2.6 dB at fundamental and by 1.7 dB at harmonics.

6. Other Measurements and Computations

6.1 Correction For Pulse Operation

When the transmitter is activated by momentary push of RKE function button, it transmits two ASK encoded (repeated) words for about 0.4 seconds. When a button is kept depressed, there is no additional transmission. The word is 116.25 ms long and is Manchester/ASK modulated. Ones and zeros appear as low-high, high-low transitions. The ON/(ON+OFF) ratio is 0.479. Fig. 6.1. Thus, the duty factor is:

$$K_E = 0.405 \text{ ms} / 0.845 \text{ ms} = 0.479 \text{ or } -6.4 \text{ dB.}$$

6.2 Emission Spectrum

Using the ridge-horn antenna and DUT placed in its aperture, emission spectrum was recorded and is shown in Figure 6.2.

6.3 Bandwidth of the Emission Spectrum

The measured spectrum of the signal is shown in Figure 6.3. The allowed (-20 dB) bandwidth is 0.25% of 315 MHz, or 787.25 KHz. From the plot we see that the -20 dB bandwidth is 55.0 kHz, and the center frequency is 315.00 MHz.

6.4 Effect of Supply Voltage Variation

The DUT has been designed to be powered by 3 VDC battery. For this test, the battery was replaced by a laboratory variable power supply. Relative power radiated was measured at the fundamental as the voltage was varied from 2.0 to 4.0 volts. The emission variation is shown in Figure 6.4.

6.5 Input Voltage at Battery Terminals

Batteries: before testing $V_{oc} = 3.21 \text{ V}$
 after testing $V_{oc} = 3.06 \text{ V}$

Ave. current from batteries $I = 1.3 \text{ mA}$ (continuous pulsed)

6.6 Verification for Deactivation Within 5 Seconds

When a button is kept depressed, the DUT transmits up to about 0.4 seconds. When the button is released, the transmission essentially ceases at that time. Figure 6.5 shows emission when the DUT is activated by pushing a button for short or a long time.

Table 5.1 Highest Emissions Measured

Radiated Emission - RF											Valeo 315 MHz Tx; FCC/IC
#	Freq. MHz	Ant. Used	Ant. Pol.	Pr dBm	Det. Used	Ka dB/m	Kg dB	E3* dBµV/m	E3lim dBµV/m	Pass dB	Comments
1	315.0	Dip	H	-24.5	Pk	18.9	22.0	73.0	75.6	2.6	flat
2	315.0	Dip	V	-29.4	Pk	18.9	22.0	68.1	75.6	7.5	end
3	630.0	Dip	H	-53.4	Pk	25.2	20.2	52.2	55.6	3.4	flat
4	630.0	Dip	V	-52.9	Pk	25.2	20.2	52.7	55.6	2.9	side
5	945.0	Dip	H	-62.6	Pk	28.9	18.0	48.9	55.6	6.7	flat
6	945.0	Dip	V	-66.4	Pk	28.9	18.0	45.1	55.6	10.5	side
7	1260.0	Horn	H	-43.7	Pk	20.4	28.1	49.2	55.6	6.4	flat
8	1575.0	Horn	H	-47.5	Pk	21.4	28.2	46.3	54.0	7.7	side
9	1890.0	Horn	H	-51.0	Pk	22.1	28.1	43.6	55.6	12.0	side
10	2205.0	Horn	H	-47.8	Pk	22.9	27.0	48.7	54.0	5.3	flat
11	2520.0	Horn	H	-44.1	Pk	24.0	26.6	53.9	55.6	1.7	flat *worst case
12	2835.0	Horn	H	-52.5	Pk	24.9	25.4	47.6	54.0	6.4	flat
13	3150.0	Horn	H	-55.3	Pk	25.2	24.8	45.7	55.6	9.9	flat
14											
15											
16		* Includes 6.4 dB duty factor									
17											
18											
19											
20											
21											

Digital Emissions											
#	Freq. MHz	Ant. Used	Ant. Pol.	Pr dBm	Det. Used	Ka dB/m	Kg dB	E3* dBµV/m	E3lim dBµV/m	Pass dB	Comments
1											
2											
3				Digital emissions are more than 20 dB below FCC Class B limit							
4											

Conducted Emissions							
#	Freq. MHz	Line Side	Det. Used	Vtest dBµV	Vlim dBµV	Pass dB	Comments
1							
2				Not applicable			
3							
4							

Meas. 1/12/04; U of Mich.

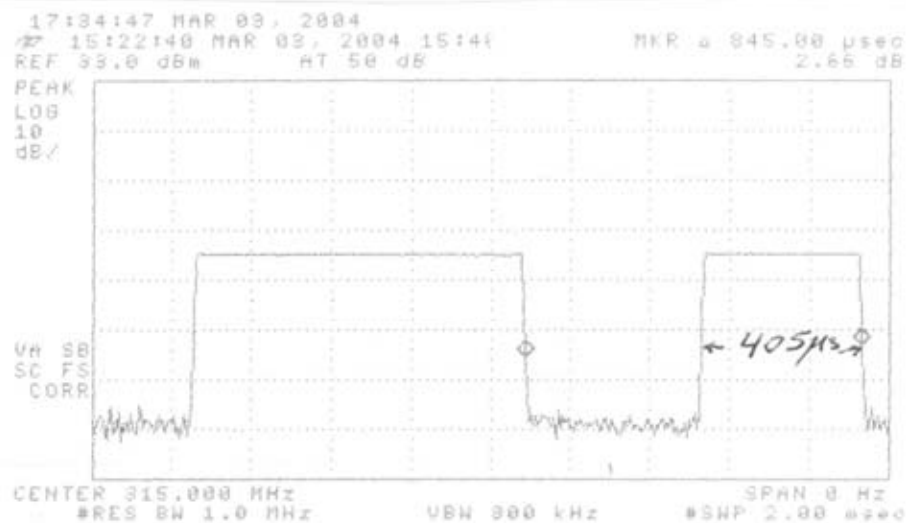
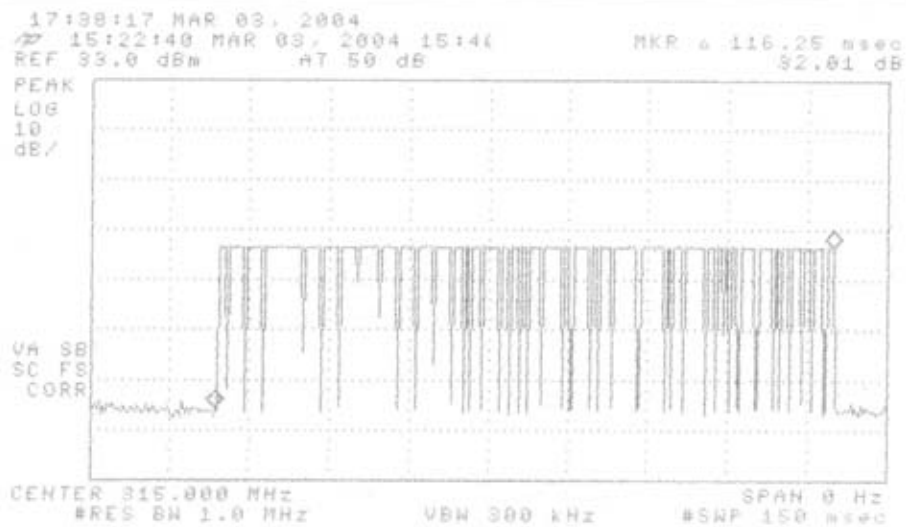


Figure 6.1. Transmissions modulation characteristics: (top) complete transmission, (center) expanded word, (bottom) expanded bits.

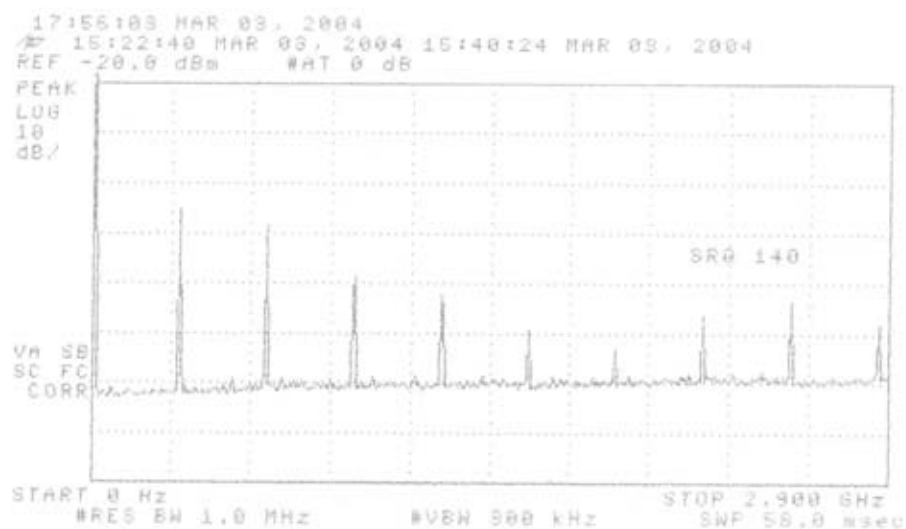


Figure 6.2. Emission spectrum of the DUT (pulsed emission).
 The amplitudes are only indicative (not calibrated).

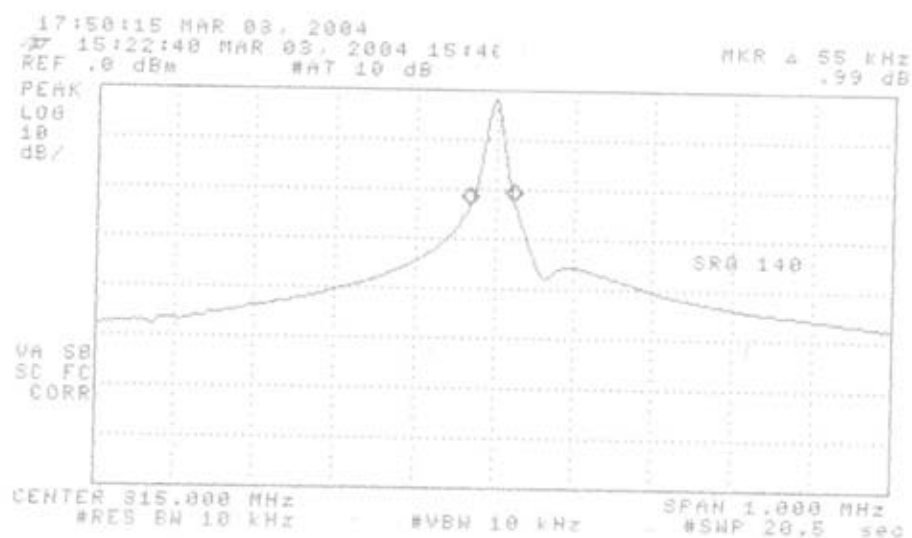


Figure 6.3. Measured bandwidth of the DUT (pulsed emission).

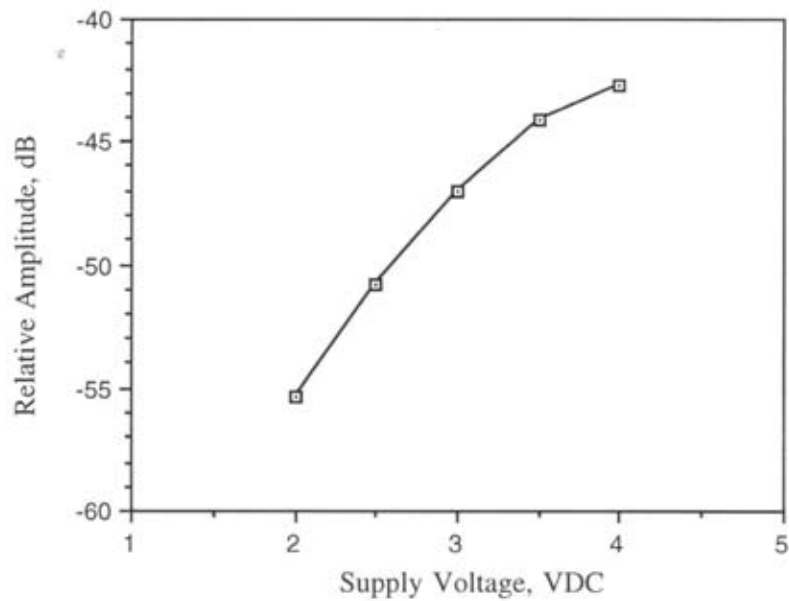


Figure 6.4. Relative emission at 315.0 MHz vs. supply voltage (pused emission).

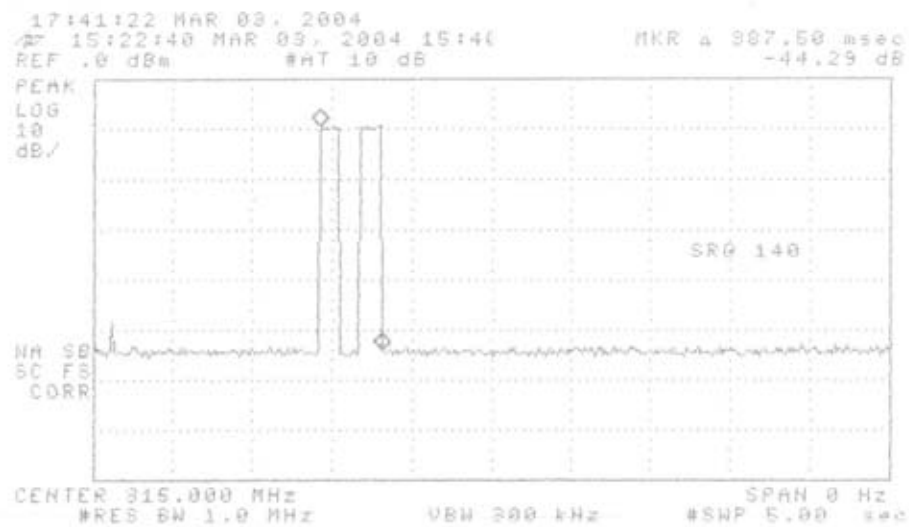


Figure 6.5. Emission for push activation.

DUT on OATS



DUT on OATS (close-up)

