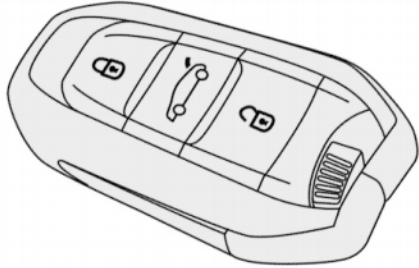


Vehicle access

Electronic key with remote control feature and integrated key

Remote control feature



Depending on the version, the remote control allows the following features to be carried out remotely:

- Unlocking/Locking/Super-locking the vehicle and fuel door.
- Unlocking/Locking the trunk.
- Retracting/Deploying the mirrors.
- Retracting/Deploying the exterior handles.
- Activating/Deactivating the alarm.
- Locating the vehicle.
- Opening/Closing the windows.
- Vehicle immobilization.

Unlocking the vehicle

Settings for selective unlocking (driver's door, trunk) can be accessed via the **Driving/Vehicle** menu on the touch screen.

Total unlocking

- Press the Unlock button.

The vehicle handles, and the exterior rearview mirrors depending on the version, are deployed.

Selective unlocking

Driver's door and fuel door

- Press the Unlock button.
- To unlock the other doors and the trunk, press the Unlock button a second time.

Total or selective unlocking, and deactivation of the alarm depending on the version, is confirmed by flashing of the indicator lights and activation of the daytime running lights.

Opening the windows

Depending on the version, pressing the Unlock button for more than 3 seconds opens the windows.

The windows stop when the button is released.

Selective unlocking of the trunk

Selective unlocking of the trunk is enabled by default.

- Press this button to unlock the trunk. The doors remain locked.

Depending on the version, a long press on this button opens the trunk.

If selective unlocking of the trunk is disabled, pressing this button also unlocks the doors.

Remember to relock the trunk by pressing the Lock button.

Locking the vehicle

Simple locking

- Press the Lock button.

Locking, and activating the alarm depending on the version, is confirmed when the indicator lights and daytime running lights turn on.

The vehicle handles retract and, depending on the version, the exterior rearview mirrors fold in.

Super-locking

- Within 3 seconds, press the Lock button again to super-lock the vehicle (confirmed by the temporary activation of the indicator lights).

Closing the windows

Hold down the Lock button for more than 3 seconds to close the windows.

Locating the vehicle

This feature allows you to locate the vehicle remotely, with the vehicle locked.

- Press the button.

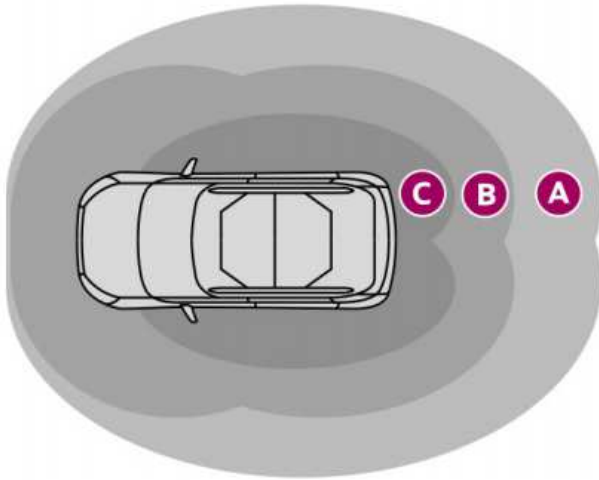
The overhead lights and exterior rearview mirror spots turn on, and the indicator lights flash for about 10 seconds.

ADML Proximity

This hands-free access and start system allows the vehicle to be automatically locked/unlocked by simply detecting the electronic key.

When the driver has the electronic key, the vehicle unlocks when the driver approaches and locks when he or she moves away.

Key detection zones:



Zone A: Reception lights illuminate on approach (between 3 and 5 meters from the vehicle).

Zone B: Automatic locking when moving away (approximately 2 meters from the vehicle).

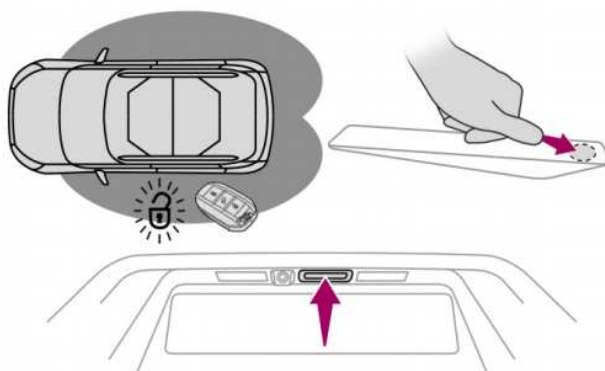
Zone C: Automatic unlocking on approach (between 1 and 2 meters from the vehicle).

The activation/deactivation of the automatic features can be configured in the **Driving/Vehicle** menu on the touch screen.

When carrying the electronic key, the driver can also lock and unlock the vehicle by pressing the retractable handles.

For more information on **Retractable Handles**, please refer to the corresponding section.

Unlocking the vehicle



Settings for selective unlocking (driver's door, trunk) can be accessed via the **Driving/Vehicle** menu on the touch screen.

Total unlocking

The vehicle (doors and trunk) unlocks:

- Either automatically when the driver approaches (zone C), if the automatic features are activated.
- Or by pressing lightly on a handle.

Unlocking, and deactivating the alarm depending on the version, is confirmed when the indicator lights flash and the daytime running lights turn on.

The vehicle handles, and the exterior rearview mirrors depending on the version, are deployed.

Selective unlocking

Driver's door and fuel door

They are unlocked:

- Either automatically when the driver approaches the driver's door, if the automatic features are activated.
- Or by pressing lightly on the handle.

The driver's door handle is deployed.

- Once inside the vehicle, all the doors can be unlocked by pressing the central locking button or pulling the handle on any door.

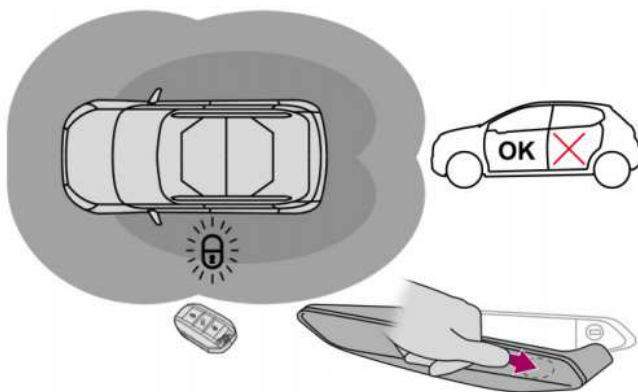
Selective unlocking of the trunk

- Press the trunk release to unlock only the trunk.

The doors remain locked.

Locking the vehicle

Simple locking



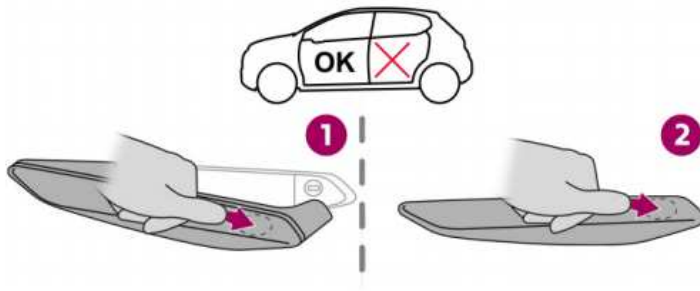
When the doors and trunk are closed, the vehicle is locked:

- Either automatically when leaving zone B, if the automatic features are activated.
- Or by lightly pressing one of the front door handles.

Locking is confirmed when the indicator lights and daytime running lights turn on, and also by an audible signal for remote locking.

It is not possible to lock the vehicle if the electronic key is left inside.

Super-locking



- Lightly press one of the front door handles to lock the vehicle.
- Within 3 seconds, press again to super-lock the vehicle (confirmed by the temporary activation of the indicator lights).

DS Smart Access

This system allows you to use the vehicle with your smartphone (or smart watch¹).

For more information on **DS Smart Access**, install the **MyDS** app and refer to the corresponding section.

Operating conditions

- The vehicle must be equipped with the DS Smart Access system.
- The feature must be activated in the **Driving/Vehicle** menu on the touch screen.
- The feature must be configured via the **MyDS** app.
- The smartphone must be sufficiently charged.
- Bluetooth® must be enabled on the smartphone.

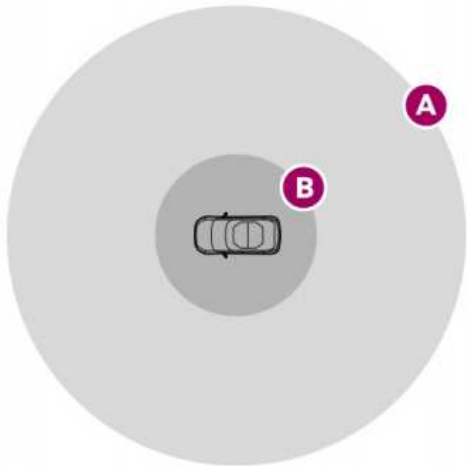
User rights

Owner (holder of the registration certificate): designates and manages the main users of the vehicle (up to 2) on the **MyDS** app.

Primary user (main driver, often the owner): can access and start the vehicle for an unlimited period of time. Can delegate user rights (access only or access and ignition) to secondary users (up to 3) for a fixed or indefinite period of time.

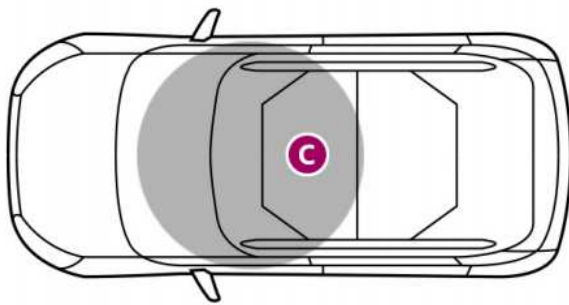
Secondary user (occasional driver): can use the vehicle in accordance with the user rights defined by the primary user.

Operation



Zone A: Remote unlocking/locking (approx. 20 meters).

Zone B: Unlocking/locking on approach (approx. 5 meters).



Zone C: Smartphone must be placed in this area to allow ignition.

Unlocking

On approaching the vehicle (entering zone B), the user receives a notification on his or her smartphone or smart watch to authorize unlocking of the vehicle.

After confirmation, the vehicle unlocks.

Remote unlocking is also possible using the smartphone, up to 20 meters from the vehicle (zone A).

Ignition

Once inside the vehicle, the user must place the smartphone in the Bluetooth® detection zone (zone C) to enable ignition.

Locking

When leaving the vehicle, the user receives a notification on his or her smartphone or smart watch to lock the vehicle.

After confirmation, the vehicle locks.

The vehicle can also be locked from up to 20 meters away (zone A). [...]

Anti-theft protection

Electronic immobilizer

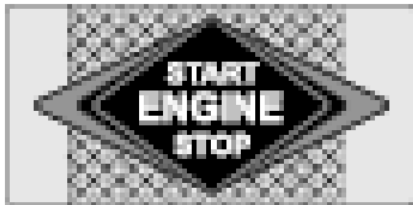
The keys incorporate an electronic immobilizer system with a personal code, which must be recognized to enable ignition.

In the event of a malfunction, indicated by a message display, the vehicle will not start.

Contact the Network.

Ignition

- With **manual transmission**, place the gearstick in neutral and fully depress the clutch pedal.
- With **automatic transmission**, select P or N mode and depress the brake pedal.
- Press the **START/STOP** button while holding down the pedal until the engine starts.



For **diesel engines**, in temperatures below 0°C and/or when the engine is cold, ignition will only take place after the preheating indicator goes out.



If this light comes on after pressing the **START/STOP** button:

- Keep the pedal depressed and do not press **START/STOP** again until the engine is fully started.

If one of the ignition conditions is not applied, a message is displayed.

In some cases, a message will indicate that it is necessary to move the steering wheel while pressing the **START/STOP** button to assist with unlocking the steering column.

Stopping

- Bring the vehicle to a standstill with the engine at idle.
- With **manual transmission**, preferably place the gearstick in neutral.
- With **automatic transmission**, preferably select P or N mode.
- Press the **START/STOP** button.

In some cases it is necessary to move the steering wheel to lock the steering column.

Switching on the ignition without starting the engine

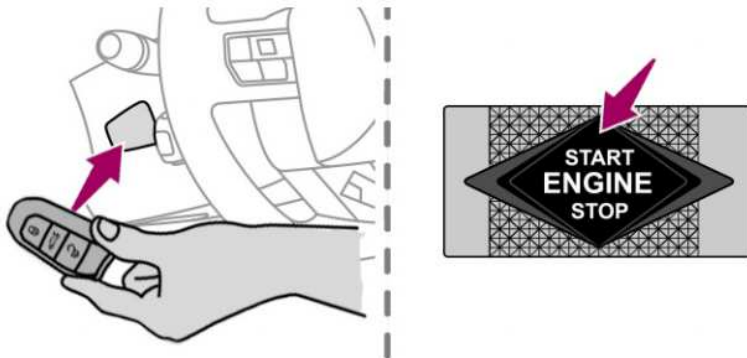
While the electronic key is in the passenger compartment, pressing the **START/STOP** button, **without any action on the pedals**, allows the ignition to be turned on without starting the engine.

- Press this button **again** to turn the ignition off and allow the vehicle to lock.

Key not detected

Emergency start

An emergency reader is located on the steering column to allow the engine to start when the system does not detect the key in the detection zone or when the battery of the electronic key is flat.



- Place the remote control against the reader and hold it there.
- **With manual transmission**, place the gearstick in neutral, then fully depress the clutch pedal.
- **With automatic transmission**, select P mode, then fully depress the brake pedal.
- Press the **START/STOP** button.

The engine starts.

Safety stop



When the electronic key is not detected or is no longer in the detection zone, a message appears on the remote device when closing a door or when requesting engine switch-off.

- 1) To confirm the request to stop the engine, press the **START/STOP** button for about 3 seconds.

In the event of a malfunction of the electronic key, consult the Network or a qualified workshop.

Emergency switch-off

In an emergency only, the engine can be switched off without conditions (even while driving).

- 2) Press the **START/STOP** button for about 3 seconds.

The steering column will lock as soon as the vehicle has stopped.

Ignition/Switching off the engine with DS SMART ACCESS

After activation by the customer, this feature allows the user, via the **MyDS** app, to access and start the vehicle and to delegate its use to the people of his or her choice.

For more information on **DS SMART ACCESS** and how to activate it, download the **MyDS** app and refer to the corresponding section. [...]

Regulatory Notice (US owners only)

FCC certification information

Object of the compliance statement:

- “Valeo”, Electronic Key (IML v2) **FCC ID: N5F-IM3C**
- “Valeo” Short Distance Communication Module (SDCM) **FCC ID: N5F-SD1A**

Both devices comply with Part 15 of the FCC Rules. Their operation is subject to the following two conditions:

- 1) those devices may not cause harmful interference and,
- 2) those devices must accept any interference received, including interference that may cause undesired operation.

Changes or modifications made to those equipments not expressly approved by **Valeo** may void the FCC authorization to operate this equipment.

Radiofrequency radiation exposure Information:

Both equipments comply with FCC radiation exposure limits set forth for an uncontrolled environment.

- IM3C should be installed and operated with a minimum distance of 0,5 cm between the radiator and your body,
- SD1A should be installed and operated with a minimum distance of 20 cm between the radiator and your body.

Both equipments should be installed and operated with minimum distance of 0.5 cm between the radiator and your body. Both transmitters must not be co-located or operating in conjunction with any other antenna or transmitter.

[...]