

(Project)

Owner's Manual PEPS PAAK (D-CROSS)



DISCLAIMER

This product is an automotive component assembled into a vehicle. Our company as a car supplier does not issue the vehicle owner's manual. However, we will provide the regulatory statements to be included in the vehicle owner's manual to the vehicle manufacturer.

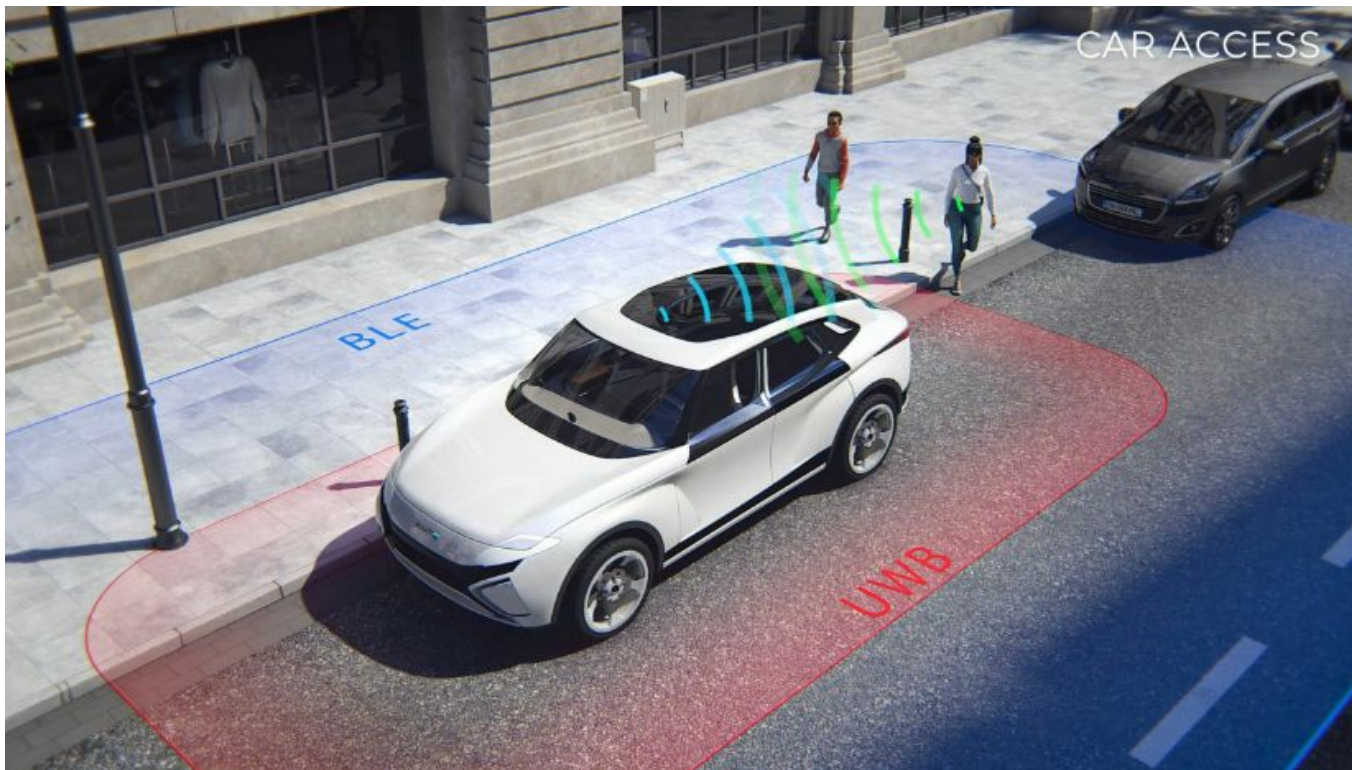
Status: **RELEASE**
Doc.No.: DCROSS_4376_1_NAFTA
Revision:1.1
Date: 29.08.202

***PHONE AS A KEY,
THE SECURE KEY TO
YOUR CAR ON YOUR
SMARTPHONE***



SMART TECHNOLOGY
FOR SMARTER CARS

Unlocking and starting your vehicle with your mobile phone is possible thanks to Valeo. Valeo's Phone As A Key (PAAK) solution allows you to use a smartphone as a secure digital key to unlock and start your car. By 2030, half of all drivers are expected to use the phone as a key.



WHAT IS DIGITAL CAR KEY?

While some digital key solutions already exist on the automotive market, they require the use of a mobile application to unlock the vehicle doors or placing the smartphone on the door handle.

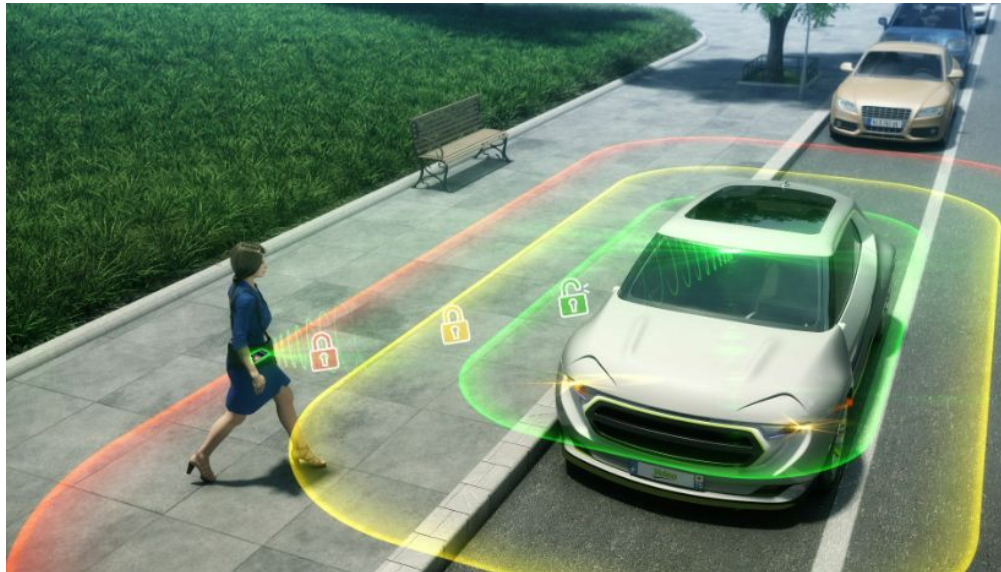
With Valeo PAAK, the digital car key, there is no need to use an application: the smartphone is in your pocket or bag and communicates securely with the car. As soon as the smartphone is close to the vehicle, the door unlocks automatically and quickly. Once installed in the vehicle, simply press the start button.



SMART TECHNOLOGY
FOR SMARTER CARS

Valeo's PAAK Hands-Free Vehicle Entry and Start system similarly uses a secure wireless communications system, although this system works with a car key that sends signals to the car.

The digital key is contained in the mobile phone and can easily be shared with family or friends, used for fleet management or car sharing services and simplify life without compromising security. It is also possible to give temporary access to a service provider for temporary access to the safe for a delivery, for example.





SMART TECHNOLOGY
FOR SMARTER CARS

HOW DOES DIGITAL AUTOMOTIVE KEY TECHNOLOGY WORK?

Valeo's PAAK solution, which uses Ultra Wide Band (UWB), Bluetooth Low Energy (BLE) and Near Field Communication (NFC), meets the specifications of the Car Connectivity Consortium (CCC) guaranteeing security between the car and the smartphone and interoperability. NFC will unlock the door and start the engine completely securely, even when the smartphone battery is empty.



SMART TECHNOLOGY
FOR SMARTER CARS

What are the advantages ?

- provides maximum comfort to the driver (the smartphone can remain in the bag/pocket during unlocking, access and engine start),
- highly secure solution resistant to relay attacks,
- improve the car sharing and goods delivery experience,
- The integration of ultra wide band (UWB) in the car makes it possible to offer new services (remote parking, tire pressure monitoring system communications, vehicle tracking,...)
- backup solution (NFC)



SMART TECHNOLOGY
FOR SMARTER CARS

Regulatory notice

Object:

Model	Product name	Brand	FCC ID
DKA1	HFASA	Valeo	FCC ID: N5F-DKA1
HFM1	HFASM		FCC ID: N5F-HFM1

This device complies with Part 15 of the FCC rules and contains licence-exempt transmitter(s)/ receiver(s) that comply with Innovation, Science and Economic Development Canada's licence-exempt RSS(s). Operation is subject to the following two conditions:

- (1) this device may not cause interference and,
- (2) this device must accept any interference, including interference that may cause undesired operation of the device.

Canada (français)

L'émetteur/récepteur exempt de licence contenu dans le présent appareil est conforme aux CNR d'Innovation, Sciences et Développement Economique Canada applicables aux appareils radio exempts de licence. L'exploitation est autorisée aux deux conditions suivantes :

- (1) L'appareil ne doit pas produire de brouillage;
- (2) L'appareil doit accepter tout brouillage radioélectrique subi, même si le brouillage est susceptible d'en compromettre le fonctionnement.

Caution to users

Changes or modifications made to this equipment not expressly approved by (manufacturer name) may void the FCC authorization to operate this equipment

Radiofrequency radiation exposure Information

The radiated output power of the device is far below the FCC radio frequency exposure limits. Nevertheless, the device shall be used in such a manner that the potential for human contact during normal operation is minimized.



SMART TECHNOLOGY
FOR SMARTER CARS

Radiofrequency radiation exposure Information

This equipment complies with FCC and Innovation, Science and Economic Development Canada's radiation exposure limits set forth for an uncontrolled environment. This equipment should be installed and operated with minimum distance of 20 cm between the radiator and your body.

This transmitter must not be co-located or operating in conjunction with any other antenna or transmitter.

Canada (français)

Cet équipement est conforme aux limites d'exposition aux rayonnements d'Innovation, Sciences et Développement économique Canada établies pour un environnement non contrôlé. Cet équipement doit être installé et utilisé avec un minimum de 20 cm de distance entre la source de rayonnement et votre corps.

Ce transmetteur ne doit pas être placé au même endroit ou utilisé simultanément avec un autre transmetteur ou antenne.