

I. Installation Guide	2
Checking Contents	3
System requirements.....	3
For more detailed information.....	3
Features.....	3
Hardware installation	5
Connecting the scanner to PC	5
Use in conjunction with other parallel port devices	6
Setting up Scanware Note	7
Use in conjunction with other parallel port devices	7
Standby mode.....	8
Cleaning the Scanware Note Mechanism.....	8
Power supply information	8
Battery power	9
Battery specification	9
Charging the battery pack	9
Charge mode, 2 hours.....	9
Preserving battery pack life	10
AC adapter	10
II. Getting Started Guide	11
Installing the software.....	12
Operating the TWAIN driver	13
Calibrating the scanner.....	13
Scanning.....	15
Scanware Note Scanner Specification	19

Scanware Note
Installation Guide

Avigram 

Checking Contents

Please check the parts all in the scanner box before installation. If any items below are missing or damaged, please contact the dealer where you purchased the scanner.

System requirements

To use the scanner and software, you'll need the following:

- ☒ Windows 95™, 486-based PC or higher
- ☒ 16MB RAM minimum, 32 MB RAM recommended
- ☒ 50 MB available hard disk space
- ☒ Color Monitor with true color VGA
- ☒ CD-ROM drive to install the software package
- ☒ EPP/ECP parallel port (EPP mode recommended)

For more detailed information

The software package CD includes the Users' guide. It provides more information about Scanware Note.

Features

1. Battery pack

Consists of a NiMH battery capable of 1-hour continuous operating time.

2. Reset button

A hardware reset function. You may press the reset button to abort scanning when experiencing difficulty.

3. LED indicator

A Bi-color LED - yellow light and amber light. Yellow indicates normal operating status with the power switch in position "1". When you turn the power switch to the position "0", amber indicates the battery is charging. After the battery is fully charged, the amber light will turn off.

4. Open leaf

You may open the release cover by pushing out the open leaf to clear the dust or clear paper jams. When you clear dust from the CIS sensor, please be careful do not to damage its surface.

5. Printer port (Pass through port)

You may continue to use your printer by attaching it to this port. Printer data will "pass through" the scanner on its way to the printer.

6. Computer port

To connect the scanner to your computer with the supplied parallel cable.

7. Power in jack

You may plug in the power adapter cable to supply power to the scanner.

8. Power switch

Position "0" (Turn off the scanner)

Turn off the scanner power to save electricity when not required. An amber led indicates the charge circuit is operating. After the battery pack is fully charged, the charge circuit will go into trickle charge mode and the amber light will go out.

Position "1" (Turn on the scanner)

A yellow led indicates normal operating status. To turn off the scanner power to save electricity, push the switch to position "0". See above.

9. Release cover

If the sensor is dirty or the paper jams, you may open the release cover by pushing out the open leaf to clear or solve the paper jam problem.

Be aware of the surface of CIS sensor. Do not damage the surface of CIS sensor.

Hardware installation

Connecting the scanner to PC

1. Please turn the power switch to position "0". Insert the battery pack into the battery hole.
2. Plug the power adapter into an AC outlet, and adapter cable into the power in jack on the rear of the scanner.

3. The LED will show amber indicating charging. We recommend you fully charge the battery pack before using the scanner. The battery is charged when the amber light goes out.
4. Before you proceed to step 5, turn off the power of your computer. Remember to save any open files before closing Windows.
5. Connect the parallel interface cable to your computer's parallel port connector (printer port). Tighten the connector retention screws to secure. Connect the other end of the parallel interface cable to the parallel port connector on the back of Scanware Note.
6. If you have printer please connect the parallel cable from the printer to the printer port or pass through port on the rear of the scanner.
7. Turn on your PC and turn the power switch to the position "1". You are ready to install the Scanware Note software package.

Use in conjunction with other parallel port devices

1. Shut down and turn off your computer and all other devices including the printer.
2. Unplug the cable currently plugged into your computer's parallel port.
3. Connect the parallel interface cable to the parallel port connector in your computer.
4. Plug the previous cable into the pass through port in the rear

- of the Scanware Note.
5. Restart your computer.

Setting up Scanware Note

- Install the software from CD
- Calibrate the scanner

8. Connect the parallel interface cable to your computer's parallel port connector (printer port). Tighten the connector retention screws to secure. Connect the other end of the parallel interface cable to the parallel port connector on the back of Scanware Note.
9. If you have printer please connect the parallel cable from the printer to the printer port or pass through port on the rear of the scanner.
10. Turn on your PC and turn the power switch to the position "1". You are ready to install the Scanware Note software package.

Use in conjunction with other parallel port devices

6. Shut down and turn off your computer and all other devices including the printer.
7. Unplug the cable currently plugged into your computer's parallel port.
8. Connect the parallel interface cable to the parallel port connector in your computer.
9. Plug the previous cable into the pass through port in the rear of the Scanware Note.

10. Restart your computer.

Standby mode

The system will go into standby mode when the scanner finishes scanning. The system powers off the CIS sensor and motor. It is reactivated when paper is detected.

Cleaning the Scanware Note Mechanism

If you scan items that have excessive amounts of dirt or dust, the scanner may require cleaning. To clean the scan mechanism, purchase a good-quality paper-cleaner page that is used for cleaning copy machines and fax machines. Paper-cleaner pages are available from most office supply stores.

Follow the instructions in the paper-cleaner kit, and insert the paper-cleaner page into the scanner to clean its scan mechanism.

You may also need to re-calibrate the scanner if images appear to have black or white lines running through them. Please see the online Help system for the steps to recalibrate your scanner.

Power supply information

The Scanware Note is a truly portable scanner. Versatility is ensured with a choice of two power sources, battery power and mains AC.

Battery power

When there is no AC power available as in traveling, you can use battery power.

Battery specification

Four AA size NiMH rechargeable batteries in the pack.

Capacity: 1200 mAh

Charging time: 2 hours

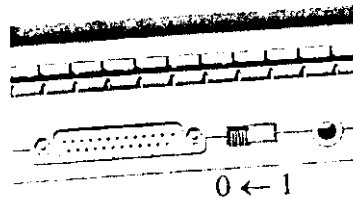
Charging the battery pack

The battery pack can be charged with the AC adapter. You must charge the battery pack in any of the following situations:

1. A new battery pack prior to first use.
2. The battery status is low as indicated by software.

Charge mode, 2 hours.

To charge the battery pack, you should plug the AC power cord into the power jack in the rear of Scanware Note. When operating (in position "1"), the charge system in the scanner will charge the battery in the normal way but there will be no indication of charging when in position "0", the amber led indicates charging. When the amber light is off, that means the battery pack is fully charged. Charging in either position takes about 2 hours.



Note:

Battery packs are shipped from the factory in an almost-discharged state, so you must fully charge them before use. If the battery pack is new or has not been used for a long period of time, it does not reach full charge with only one charge. This is normal. The battery will work its way back up to full capacity within five or six charge and discharge cycles.

Preserving battery pack life

1. Normal charging causes the battery pack to heat up a little. Let it cool for 10 minutes before you use it.
2. Do not recharge a partially used battery; always use up the battery pack completely before recharging.
3. When charging, always fully charge the battery pack.
4. After the battery pack is completely used, it will also heat up a little and it is normal. This is normal; you should wait for 10 minutes before recharging.
5. Turn off the scanner whenever it is not in use.

AC adapter

It is a full range switching power supply, the specification as follows;

Full range switch power supply: 100 Vac to 240 Vac

Frequency: 47 to 60 Hz

Output DC voltage: 7.5Vdc

Output current: 2A

Scanware Note
Getting Started Guide

Aviagramm 

After you have finished the hardware installation, you must install the software and also calibrate the scanner. This guide shows you how to get started on the software installation, how to operate the TWAIN driver and do the calibration.

Installing the software

1. Start Microsoft Windows and make sure that there are no other applications are running.
2. Insert the Scanware Note Installation CD into CD-ROM drive in your computer. The CD will automatically run.


** If the CD does not automatically run, make sure the CD drive's door is completely shut. If the CD still does not start, click the icon "My Computer" of Windows '95. The window shows the drive connected to your computer. Double-click the icon for your CD-ROM drive to see the list of files on the CD, and double-click the file "SETUP.EXE. Then the CD will start.*

3. Follow the instructions on the screen to install the Scanware Note Software and TWAIN driver on your computer.

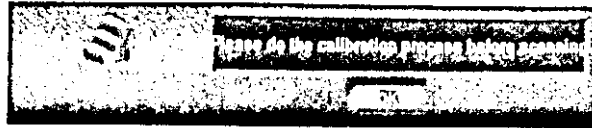
Operating the TWAIN driver

TWAIN is a programming interface for Windows applications. It makes the task of acquiring images possible across TWAIN-compliant applications. Scanware Note supports TWAIN driver that meaning you can scan directly from within any TWAIN-compliant application.

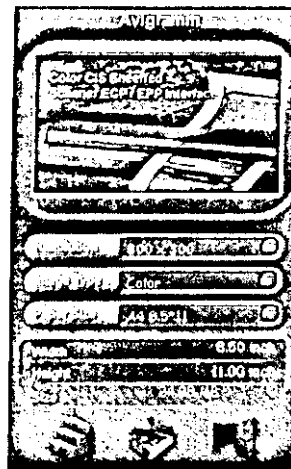
Calibrating the scanner

When you start scanning, select "Acquire" under the "File" menu or press the icon " " under the toolbars, a message box pops up to remind you to calibrate the scanner. If this is the first time you are using this scanner, you had better calibrate the scanner now to get the best possible image quality.

1. Press "O.K." to get to the next step.



2. Select the calibration "📄",





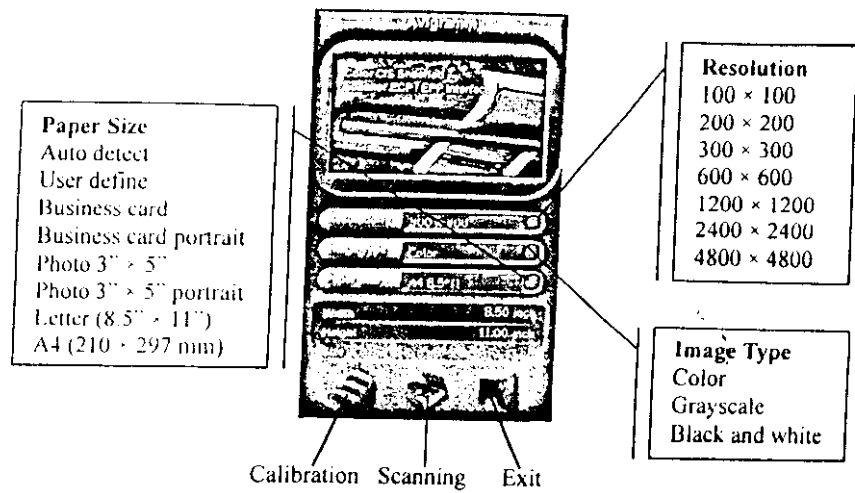
and a message box will pop up to ask you to feed the calibration paper. Please follow the instruction to feed the calibration paper in. Calibration will then take place.




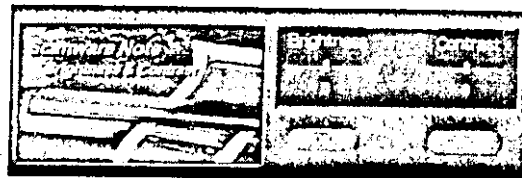
3. When calibration is complete, Scanware Note is ready for scanning.

Scanning

1. Please select "Acquire" under the "File" menu or press the icon " " under the toolbars for scanning. A dialog box pops up, and you may either insert a sheet into the scanner for scanning directly (skip to step 4) or click the scanning " " to adjust the "Brightness" and "Contrast" (refer to step 3).
2. Before inserting a sheet for scanning, choose the appropriate settings for Resolution, Image Type and Paper Size.

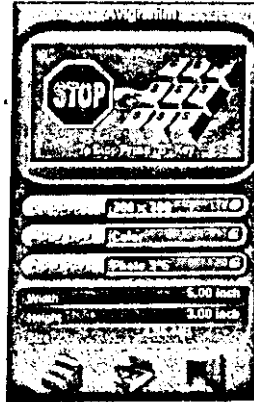


3. Select the scanning "", a dialog box will ask you to adjust "Brightness" and "Contrast". Please tune the "Brightness" and "Contrast" as necessary.

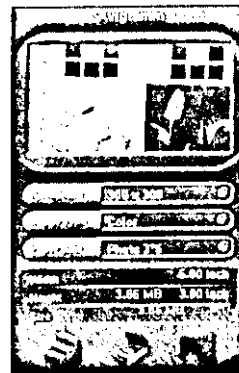



4. Insert a sheet, which you want to scan into the scanner, and


the scanner will automatically feed it back. While scanning, a dialog box will pop up as shown below. You may press "S" to stop scanning if you wish to abort.



5. During the scanning process, you will see a monitor to show the scanning status.



6. When the scan is complete, either insert another page or click " " to exit.

7. After scanning, the document is transferred into the Presto! PageManager window of the Inbox. After you click " ", you can therefore follow the user's manual on CD to edit the document as applicable -- print, copy, fax or file.

Scanware Note Scanner Specification

Scanning resolution	
Optical resolution:	Horizontal 300 dpi Vertical 600 dpi
Maximum resolution	4800 dpi (interpolated)
Item sizes	
Maximum	8.5 × 30 inches (21.6 x 76.2 cm)
Minimum	1 × 1 inch (2.54 x 2.54 cm)
Scanner dimensions	
Height	1.7 inches (4.3 cm)
Width	2.6 inches (6.6 cm)
Length	11.2 inches (28.5 cm)
Weight	
Total weight	1500g
Scanner	480g
Battery pack	130g
Electrical (AC adapter)	
Full range switch power supply	
Input	
Voltage	100 Vac to 240 Vac
Frequency	47 Hz to 60 Hz
Output	
Voltage	7.5 Vdc
Current	2 A
Battery	
Output voltage	4.8 Voltage
Capacity	1200 mAh
Cable	3.6 feet (1.1 M) parallel cable
Safety and agency certifications	UL, ULc, GS, FCC Class B, VCCI Class2, CE
Compatibility certifications	NSTL (National Software Test Lab)
Hardware warranty	Two-year limited warranty