

**ELECTROMAGNETIC EMISSIONS COMPLIANCE REPORT
INTENTIONAL RADIATOR CERTIFICATION TO
FCC PART 15 SUBPART C REQUIREMENT**

OF

R/C Racer car

FCC ID: N3PXWD03211

MODEL No.: XWD03211

BRAND NAME: N/A

REPORT NO: TR06010019

ISSUE DATE: Jan 22, 2006

Prepared for

**WINBEL MANUFACTURING CORP., LTD
BLOCK 5 YINGTAI INDUSTRIAL ZONE DALANG LONGHUA
SHENZHEN GUANGDONG P.G CHINA**

Prepared by

**SHENZHEN HUATONGWEI INTERNATIONAL
INSPECTION CO., LTD**

d.b.a.

**SHENZHEN HUATONGWEI INTERNATIONAL INSPECTION CO., LTD
HUATONGWEI BUILDING, KEJI RD. 12 S., HIGH-TECH PARK,
NANSHAN DISTRICT, SHENZHEN,
GUANGDONG , P.R.CHINA**

TEL: 86-755-26748099

FAX: 86-755-26748089

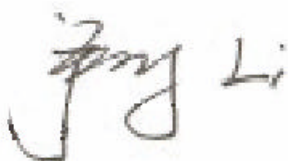
VERIFICATION OF COMPLIANCE

Applicant:	Winbel manufacturing corp., ltd block5 yingtai industrial zone dalang longhua shenzhen guangdong p.g China
Product Description:	R/C Racer car
Brand Name:	N/A
Model Number:	XWD032 11
Serial Number:	N/A
File Number:	TR06010019
Date of Test:	Jan 17, 2006 ~ Jan 22, 2006

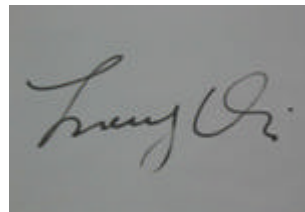
We hereby certify that:

The above equipment was tested by SHENZHEN HUA TONG WEI INTERNATIONAL INSPECTION CO., LTD. The test data, data evaluation, test procedures, and equipment configurations shown in this report were made in accordance with the procedures given in ANSI C63.4 (2003) and the energy emitted by the sample EUT tested as described in this report is in compliance with radiated emission limits of FCC Rules Part 15.227.

The test results of this report relate only to the tested sample identified in this report.

Approved By

Jimmy Li / Q.A. Manager
SHENZHEN HUA TONG WEI
INTERNATIONAL INSPECTION CO., LTD

Reviewed By

Tracy Qi / Test Engineer
SHENZHEN HUA TONG WEI
INTERNATIONAL INSPECTION CO., LTD

Table of Contents

1. GENERAL INFORMATION.....	4
1.1 PRODUCT DESCRIPTION.....	4
1.2 RELATED SUBMITTAL(S) / GRANT (S).....	4
1.3 TEST METHODOLOGY	4
1.4 TEST FACILITY	4
1.5 SPECIAL ACCESSORIES.....	4
1.6 EQUIPMENT MODIFICATIONS.....	4
2. System Test Configuration	5
2.1 EUT CONFIGURATION.....	5
2.2 EUT EXERCISE	5
2.3 TEST PROCEDURE.....	5
2.4 LIMITATION.....	5
2.5 CONFIGURATION OF TESTED SYSTEM.....	7
3. Summary Of Test Results.....	8
4. Description of test modes.....	8
5. Conducted Emissions Test (Not applicable in this report)	9
5.1 MEASUREMENT PROCEDURE:	9
5.2 TEST SET-UP (BLOCK DIAGRAM OF CONFIGURATION).....	9
5.3 MEASUREMENT EQUIPMENT USED:.....	9
5.4 MEASUREMENT RESULT:.....	9
5.5 CONDUCTED MEASUREMENT PHOTOS:	9
6. Radiated Emission Test.....	10
6.1 MEASUREMENT PROCEDURE.....	10
6.2 TEST SET-UP (BLOCK DIAGRAM OF CONFIGURATION).....	11
6.3 MEASUREMENT EQUIPMENT USED:.....	12
6.4 FIELD STRENGTH CALCULATION	12
6.5 MEASUREMENT RESULT.....	13
6.6 MEASUREMENT RESULT.....	14
7. Occupied Bandwidth	15
7.1 MEASUREMENT PROCEDURE.....	15
7.2 TEST SET-UP (BLOCK DIAGRAM OF CONFIGURATION).....	15
7.3 MEASUREMENT EQUIPMENT USED:.....	15
7.4 MEASUREMENT RESULTS:	15
APPENDIX 1.....	16
PHOTOGRAPHS OF SET UP	16
APPENDIX 2.....	18

1. GENERAL INFORMATION

1.1 Product Description

The EUT is an short range, lower power, wireless controller of toy car designed as an “Input Device”. It is designed by way of utilizing the FM modulation achieves the system operating.

A major technical descriptions of EUT is described as following:

- A). Operation Frequency: 27.0010 MHz
- B). Modulation: AM
- C). Antenna Designation: Non-User Replaceable (Fixed)
- D). Power Supply: DC 3V by battery

1.2 Related Submittal(s) / Grant (s)

This submittal(s) (test report) is intended for FCC ID: N3PXWD03211 filing to comply with Section 15.227 of the FCC Part 15, Subpart C Rules. The composite system (receiver) is compliance with Subpart B is authorized under a verification procedure.

1.3 Test Methodology

Both conducted and radiated testing were performed according to the procedures in ANSI C63.4 (2003). Radiated testing was performed at an antenna to EUT distance 3 meters.

1.4 Test Facility

The fully anechoic chamber test site and conducted measurement facility used to collect the radiated data is located on the address of SHENZHEN HUA TONG WEI INTERNATIONAL INSPECTION CO., LTD Huatongwei Building, Keji Rd. 12 S., High-tech Park, Nanshan District, Shenzhen, Guangdong, P.R.China

The fully anechoic chamber Test Sites and the Line Conducted labs are constructed and calibrated to meet the FCC requirements in documents ANSI C63.4: 2003 and CISPR 22/EN 55022 requirements.

1.5 Special Accessories

Not available for this EUT intended for grant.

1.6 Equipment Modifications

Not available for this EUT intended for grant.

2. System Test Configuration

2.1 EUT Configuration

The EUT configuration for testing is installed on RF field strength measurement to meet the Commissions requirement and operating in a manner which intends to maximize its emission characteristics in a continuous normal application.

2.2 EUT Exercise

The Transmitter was operated in the normal operating mode. the TX frequency was fixed which was for the purpose of the measurements.

2.3 Test Procedure

2.3.1 Conducted Emissions (Not apply in the report)

The EUT is a placed on as turn table which is 0.8 m above ground plane. According to the requirements in Section 13.1.4.1 of ANSI C63.4-2003. Conducted emissions from the EUT measured in the **frequency range between 0.15 MHz and 30MHz** using **CISPR Quasi-Peak and average detector mode**.

2.3.2 Radiated Emissions

The EUT is a placed on as turn table which is 0.8 m above ground plane. The turn table shall rotate 360 degrees to determine the position of maximum emission level. EUT is set 3m away from the receiving antenna which varied from 1m to 4m to find out the highest emission. And also, each emission was to be maximized by changing the polarization of receiving antenna both horizontal and vertical. In order to find out the max. emission, the relative positions of this hand-held transmitter(EUT) was rotated through three orthogonal axes according to the requirements in Section 13.1.4.1 of ANSI C63.4-2003.

2.4 Limitation

(1) Conducted Emission (Not applicable in this report)

According to section 15.207(a) Conducted Emission Limits is as following.

Frequency range MHz	Limits dB(uV)	
	Quasi-peak	Average
0.15 to 0.50	66 to 56	56 to 46
0.50 to 5	56	46
5 to 30	60	50
Note 1.The lower limit shall apply at the transition frequencies 2.The limit decreases linearly with the logarithm of the frequency in the range 0.15 MHz to 0.50 MHz.		

(2) Radiated Emission

- a. The field strength of any emission within this band (section 15.227 frequency between 26.96MHz –27.28MHz) shall not exceed 10000 micro volts/meter at 3 meters. (80dB μ V at 3m) The emission limit in this paragraph is based on measurement instrumentation employing an average detector. The provisions in section 15.35 for limiting peak emissions apply.
- b. The field strength of any emissions which appear outside of this band shall not exceed the general radiated emission limits in section 15.209(Intentional Radiators general limit).as below.

Frequency (MHz)	Field strength μ V/m	Distance(m)	Field strength at 3m dB μ V/m
1.705-30	30	30	69.54
30-88	100	3	40
88-216	150	3	43.5
216-960	200	3	46
Above 960	500	3	54

- Remark: 1. Emission level in dB μ V/m=20 log (μ V/m)
2. Measurement was performed at an antenna to the closed point of EUT distance c meters.
3. Only spurious frequency is permitted to locate within the Restricted Bands specified in provision of § 15.205
4. Emission spurious frequency which appearing within the Restricted Bands specified in provision of § 15.205, then the general radiated emission limits in § 15.209 apply.

2.5 Configuration of Tested System

Fig. 2-1 Configuration of Tested System

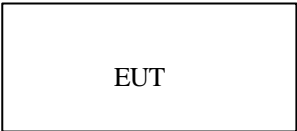


Table 2-1 Equipment Used in Tested System

Item	Equipment	Mfr/Brand	Model/Type No.	FCC ID	Series No.	Note
E-1	R/C Racer car	N/A	XWD03211	N3P XWD03211	N/A	EUT

3. Summary Of Test Results

FCC Rules	Description Of Test	Result
§ 15.207	Conducted Emission	N/A
§ 15.227	Radiated Emission	Compliant
§ 15.227	Occupied Bandwidth	Compliant

4. Description of test modes

1. The EUT (R/C Racer car) has been tested under normal operating condition.
2. The EUT stay in continuous transmitting mode. Three axes (X,Y,Z) are chosen for testing.

5. Conducted Emissions Test (Not applicable in this report)**5.1 Measurement Procedure:**

1. The EUT was placed on a table which is 0.8m above ground plane.
2. Maximum procedure was performed on the six highest emissions to ensure EUT compliance.
3. Repeat above procedures until all frequency measured were complete.

5.2 Test SET-UP (Block Diagram of Configuration)

N/A

5.3 Measurement Equipment Used:

Conducted Emission Test Site # 3					
EQUIPMENT TYPE	MFR	MODEL NUMBER	SERIAL NUMBER	LAST CAL.	CAL DUE.
EMI TEST RECEIVER	ROHDE & SCHWARZ	ESCS30	100038	2005/11	2006/11
ARTIFICIAL MAINS	ROHDE & SCHWARZ	ESH2-Z5	100028	2005/11	2006/11
PULSE LIMITER	ROHDE & SCHWARZ	ESHSZ2	100044	2005/11	2006/11
EMI TEST SOFTWARE	ROHDE & SCHWARZ	ESK1	N/A	N/A	N/A

5.4 Measurement Result:

N/A

5.5 Conducted Measurement Photos:

N/A

6. Radiated Emission Test

6.1 Measurement Procedure

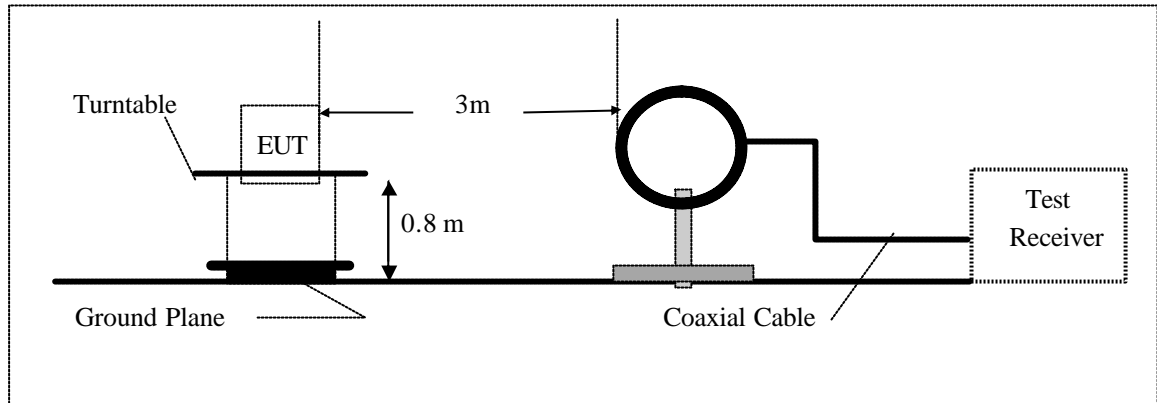
- 1 The EUT was placed on a turn table which is 0.8m above ground plane.
2. Maximum procedure was performed on at least ten highest emissions to ensure EUT compliance.
3. And also, each emission was to be maximized by changing the polarization of receiving antenna both horizontal and vertical.
4. Repeat above procedures until all frequency measurements have been completed.

Note:

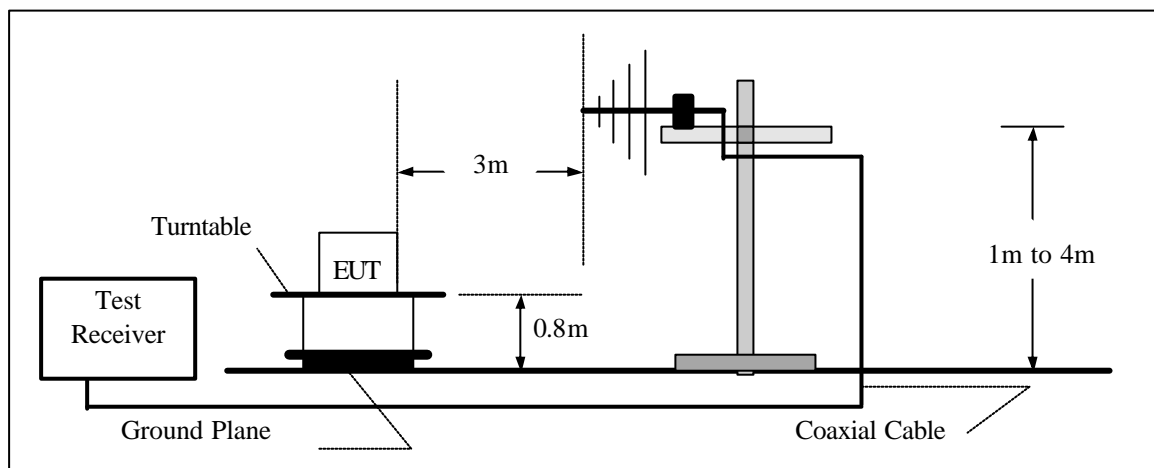
Three axes are chosen for pretest, the Z axis is the worst mode for final test.

6.2 Test SET-UP (Block Diagram of Configuration)

(A) Radiated Emission Test Set-Up, Frequency Below 30MHz



(B) Radiated Emission Test Set-Up, Frequency Below 1000MHz



6.3 Measurement Equipment Used:

3/5 Anechoic Chamber Radiation Test Site # 4					
EQUIPMENT TYPE	MFR	MODEL NUMBER	SERIAL NUMBER	LAST CAL.	CAL DUE.
ULTRA-BROADBAND ANTENNA	ROHDE & SCHWARZ	HL562	100015	2005/11	2006/11
EMI TEST RECEIVER	ROHDE & SCHWARZ	ESI 26	100009	2005/11	2006/11
RF TEST PANEL	ROHDE & SCHWARZ	TS / RSP	335015/ 0017	N/A	N/A
TURNTABLE	ETS	2088	2149	N/A	N/A
ANTENNA MAST	ETS	2075	2346	N/A	N/A
EMI TEST SOFTWARE	ROHDE & SCHWARZ	ESK1	NA	N/A	N/A

6.4 Field Strength Calculation

The field strength is calculated by adding the Antenna Factor and Cable Factor and subtracting the Amplifier Gain and Duty Cycle Correction Factor(if any) from the measured reading. The basic equation with a sample calculation is as follows:

$$FS = RA + AF + CL - AG$$

Where FS = Field Strength	CL = Cable Attenuation Factor (Cable Loss)
RA = Reading Amplitude	AG = Amplifier Gain
AF = Antenna Factor	

6.5 Measurement Result

Operation Mode: Transmitting Mode On Z Axis

Test Date : Jan 18, 2006

Fundamental Frequency: 27.0010 MHz

Test By: Tracy Qi

Temperature : 23

Pol: Vertical

Humidity : 58 %

Judgement : Passed by -9.90 dB at 81.003 MHz Ant.Pol. Ver.

Freq. (MHz)	Ant.Pol. H/V	DetectorMode (PK/AV)	Reading (dBuV)	Ant./CL/ Amp. CF(dB	Actual FS (dBuV/m)	Limit3m (dBuV/m)	Safe Margin (dB)	Note
27.001	V	Peak	38.10	21.20	64.74	80.00	-15.26	F
54.002	V	Peak	28.00	8.30	28.80	40.00	-11.20	H
81.003	V	Peak	15.40	11.40	30.10	40.00	-9.90	H
108.004	V	Peak	18.08	11.63	31.15	43.50	-12.35	H
135.005	V	Peak	10.10	10.14	19.84	43.50	-23.66	H
162.006	V	Peak	27.01	10.70	27.34	43.50	-16.16	H
Others			-					

Remark :

- (1) Measuring frequencies from 25 MHz to the 1GHz.
- (2) "F" denotes fundamental frequency; "H" denotes spurious frequency. "E" denotes band edge frequency.
- (3) * denotes emission frequency which appearing within the Restricted Bands specified in provision of 15.205, then the general radiated emission limits in 15.209 apply.
- (4) Datas of measurement within this frequency range shown " - " in the table above means the reading of emissions are attenuated more than 20dB below the permissible limits or the field strength is too small to be measured.
- (5) The IF bandwidth of EMI Test Receiver between 25MHz to 1GHz was 120KHz.

6.6 Measurement Result

Operation Mode: Transmitting Mode On Z Axis

Test Date : June 28, 2005

Fundamental Frequency: 27.0010 MHz

Test By: Tracy Qi

Temperature : 23

Pol: Horizontal

Humidity: 58 %

Judgement: Passed by -3.8 dB at 162.006 MHz Ant.Pol. Hor.

Freq. (MHz)	Ant.Pol. H/V	DetectorMode (PK/AV)	Reading (dBuV)	Ant./CL/ Amp. CF(dB)	Actual FS (dBuV/m)	Limit3m (dBuV/m)	Safe Margin (dB)	Note
27.001	H	Peak	19.37	21.20	61.22	80.00	-18.78	F
162.006	H	Peak	11.13	10.70	39.70	43.50	-3.80	H
Others			-					

Remark :

- (1) Measuring frequencies from 25 MHz to the 1GHz.
- (2) "F" denotes fundamental frequency; "H" denotes spurious frequency. "E" denotes band edge frequency.
- (3) * denotes emission frequency which appearing within the Restricted Bands specified in provision of 15.205, then the general radiated emission limits in 15.209 apply.
- (4) Datas of measurement within this frequency range shown " - " in the table above means the reading of emissions are attenuated more than 20dB below the permissible limits or the field strength is too small to be measured.
- (5) The IF bandwidth of EMI Test Receiver between 25MHz to 1GHz was 120KHz.

7. Occupied Bandwidth

7.1 Measurement Procedure

1. The EUT was placed on a turn table which is 0.8m above ground plane.
2. Set EUT as normal operation
3. Based on FCC Part15 C Section 15.227: Operation within the band 26.96 – 27.28 MHz, RBW,VBW= 10KHz.
4. The useful radiated emission from the EUT was detected by the spectrum analyser with peak detector.

7.2 Test SET-UP (Block Diagram of Configuration)

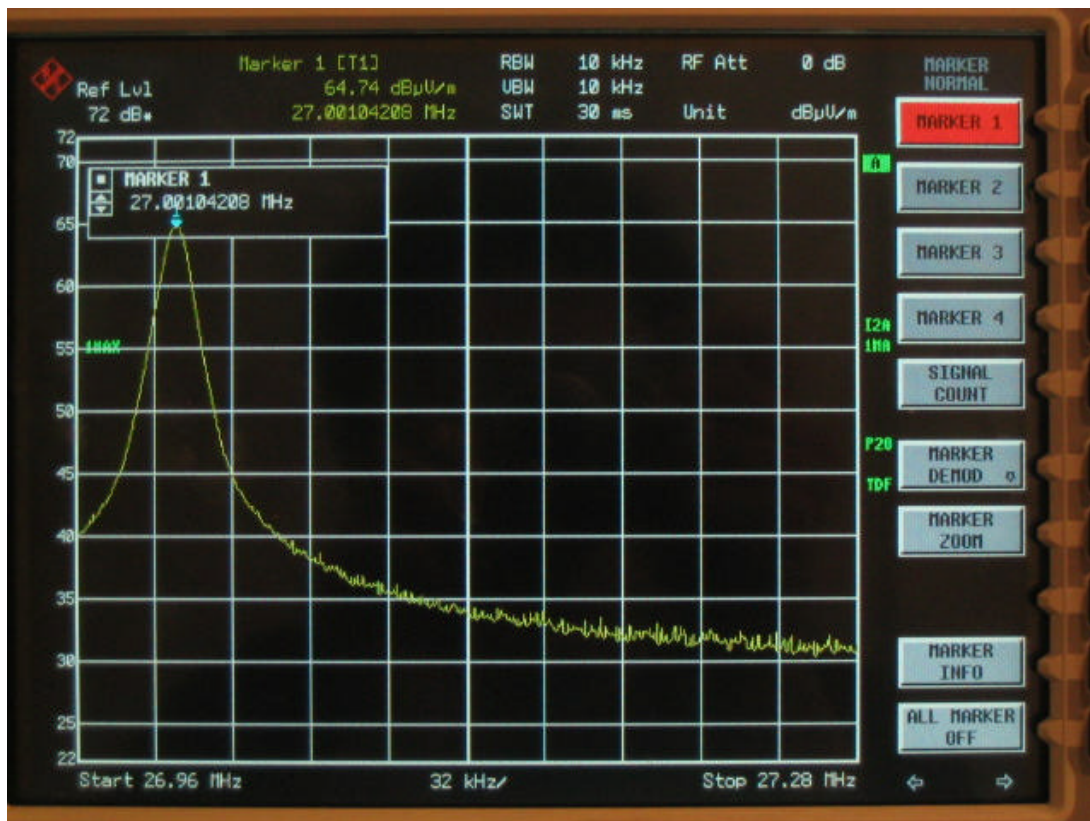
Same as 4.2 Radiated Emission Measurement.

7.3 Measurement Equipment Used:

Same as 4.2 Radiated Emission Measurement.

7.4 Measurement Results:

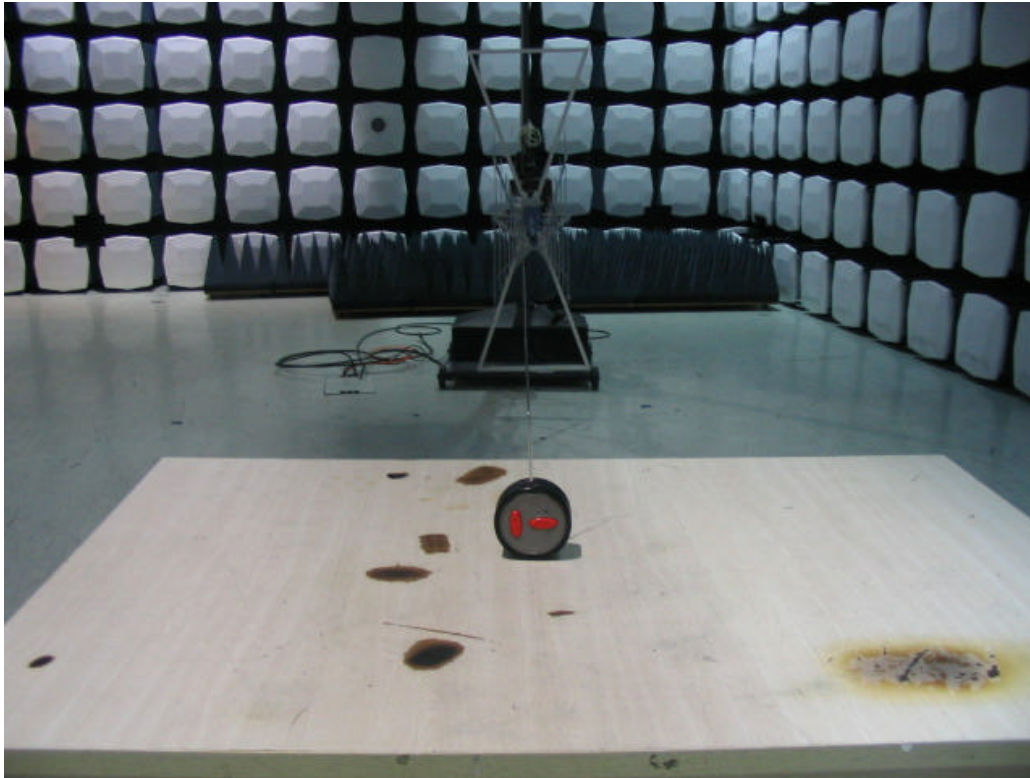
The graph as below, represents the emissions take for this device.



APPENDIX 1

PHOTOGRAPHS OF SET UP

Radiated Emission Setup Photos



APPENDIX 2

PHOTOGRAPHS OF EUT

Top View of TX



Bottom View of TX



Front View of TX



Back View of TX



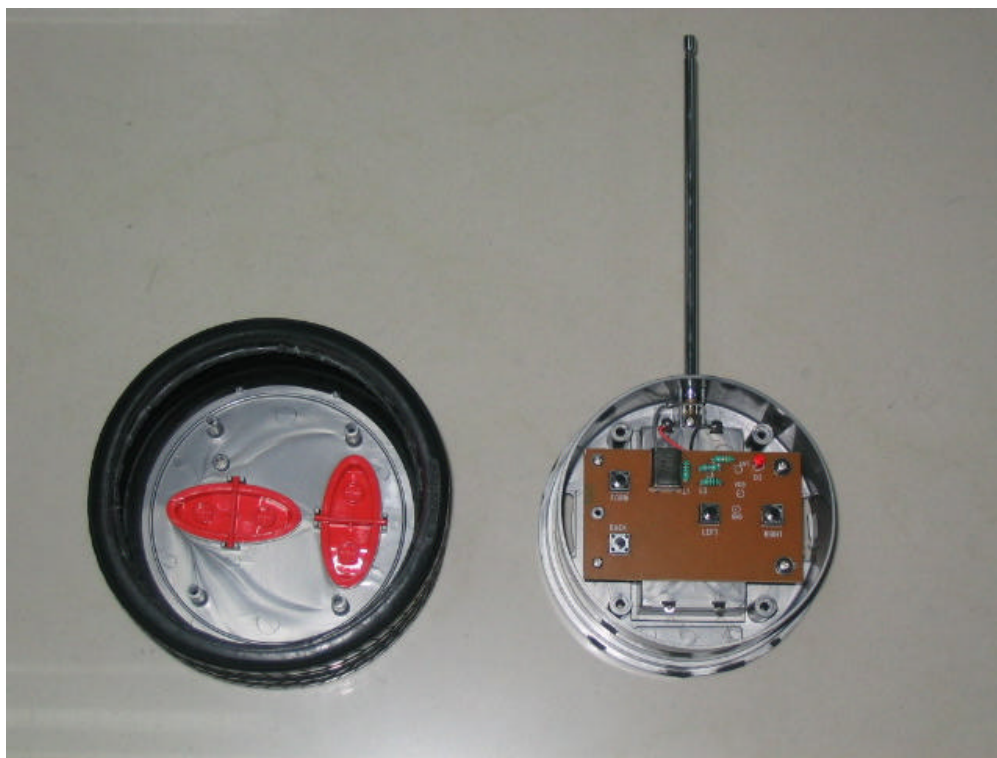
Left View of TX



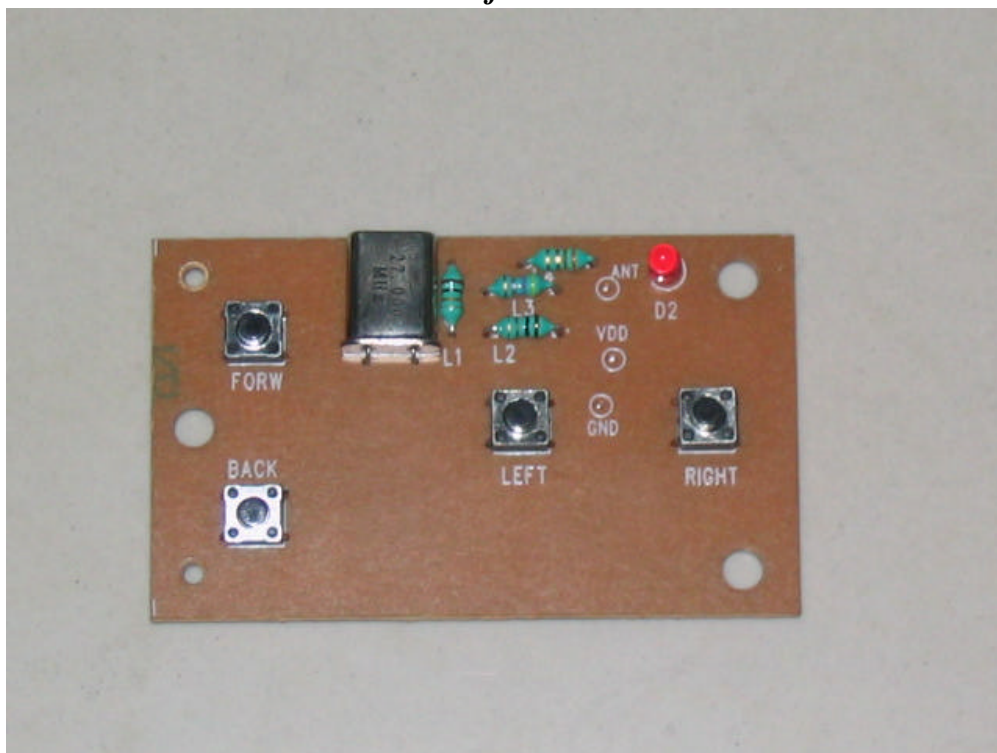
Right View of TX



Internal of TX- Open



Internal of TX- 1



Internal of TX- 2

