

Exhibit iii Page 8
client ERS, Inc.
Date 8/19/98

PARTS REMOVED:

CIRCUIT CARD A-7

FILTER FL-2 (A-8 MODULE)

SWITCH S-4 (CONTROL HEAD)

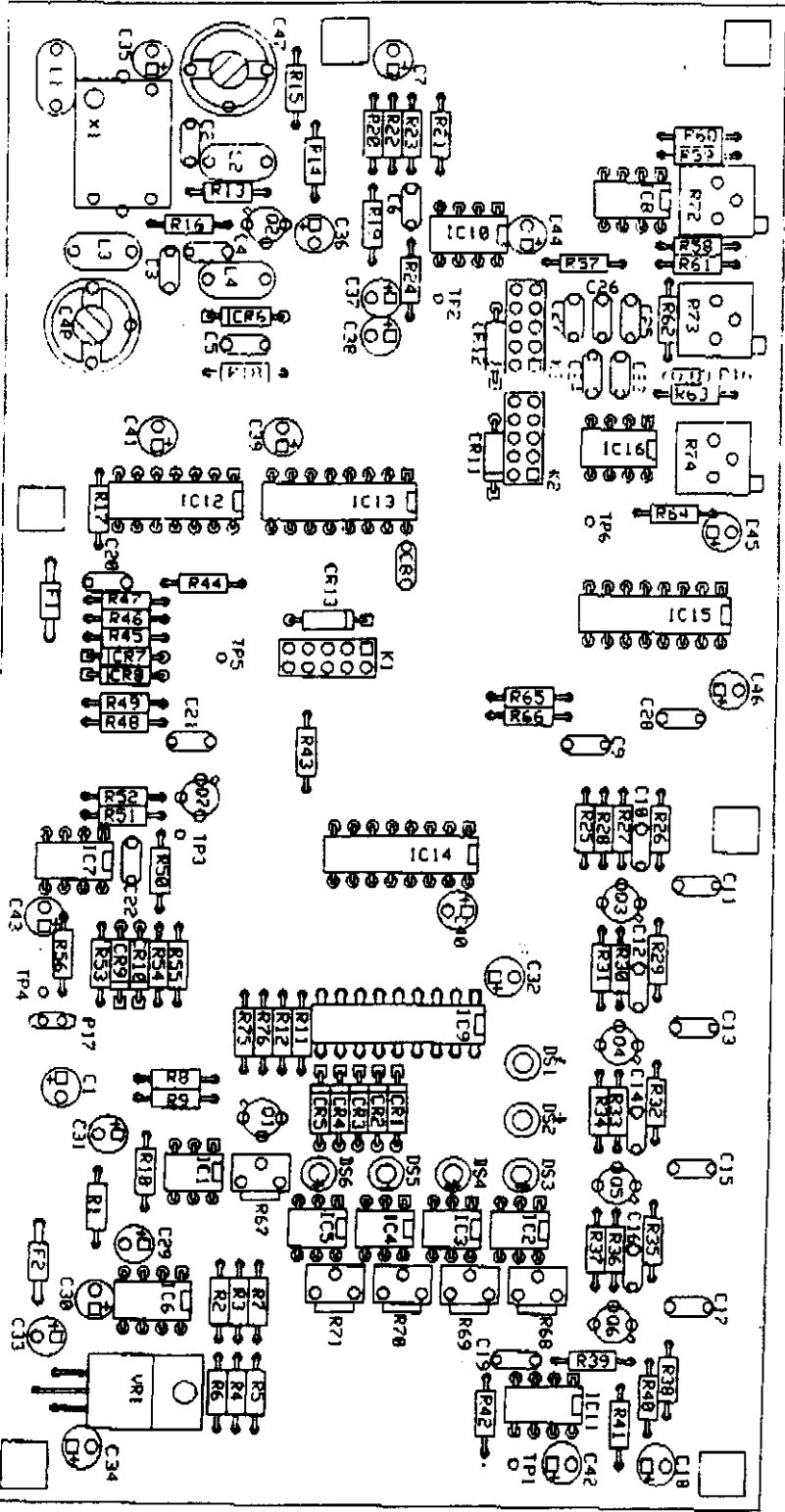
PARTS INSTALLED:

CIRCUIT CARD "MK-1" INSTALLED IN THE A-7 POSITION.

FILTER P/N LF D-12 INSTALLED IN THE FL-2 POSITION (A-8 MODULE)

TOGGLE SWITCH AND LEDS IN PLACE OF SWITCH S-4 IN THE CONTROL HEAD.

MISC. WIRING TO MODIFY UNDER CHASSIS.



Radio & Tv Engineering Co.,
 Consultants
 1416 Hollister Lane
 Los Osos, Ca. 93402
 Voice: (805) 528-1996
 Fax: (805) 528-1982

CIRCUIT CARD "MK-1" PARTS LIST

RESISTORS:

1	100K
2	47.5K
3	47.5K
4	880
5	880
6	68.1K
7	68.1K
8	7.5K
9	7.5K
10	15K
11	1.64K
12	7.5K
13	15K
14	1.65K
15	1.65K
16	1.65K
17	2.43K
18	15K
19	47.5K
20	47.5K
21	35.7K
22	68.1K
23	7.5K
24	681K
25	24.3K
26	47.5K
27	35.7K
28	35.7K
29	5.23K
30	35.7K
31	35.7K
32	5.23K
33	35.7K
34	35.7K
35	5.23
36	35.7K
37	35.7K
38	5.23K
39	35.7K
40	68.1K
41	7.5K
42	681K
43	221K
44	8.6K
45	SEL
46	SEL
47	1k
48	130K
49	681K
50	1.65K
51	390K

Exhibit iii Page 11Client ERS, Inc.Date 8/19/98

52	390K
53	SEL
54	SEL
55	1K
56	15K
57	681K
58	JUMPER
59	681K
60	5K
61	681K
62	80.6K
63	14K
64	28.7K
65	221K
66	8.6K
67	500K
68	500K
69	500K
70	500K
71	500K
72	5K
73	100K
74	10K
75	SEL
76	1M

CAPACITORS:

1	1.0
2	.01
3	15PF
4	15PF
5	.001
6	220PF
7	1.0
8	.1
9	.1
10	.0039
11	.0039
12	.0039
13	.0039
14	.0039
15	.0039
16	.0039
17	.0039
18	1.0
19	220PF
20	.47
21	.0047
22	.27
23	SEL
24	.056
25	.056
26	SEL
27	.056

28	.47
29	1.0
30	1.0
31	1.0
32	1.0
33	1.0
34	1.0
35	1.0
36	1.0
37	1.0
38	1.0
39	1.0
40	1.0
41	1.0
42	1.0
43	1.0
44	1.0
45	1.0
46	1.0
47	3-65PF
48	3-65PF

INTIGRATED CIRCUITS:

1	H11F2
2	H11F2
3	H11F2
4	H11F2
5	H11F2
6	LF411
7	LF411
8	LF411
9	LM3914
10	LF351
11	LF351
12	74LS90
13	CD4040
14	CD4048
15	CD4048
16	LM555

RELAY:

1	TN2-12V
2	TN2-12V
3	TN2-12V

RF CHOKE:

1	47UH
2	4.7UH
3	4.7UH

Radio & Tv Engineering Co.,
Consultants
1416 Hollister Lane
Los Osos, Ca. 93402
Voice: (805) 528-1996
Fax: (805) 528-1982

4 100UH

DIODE:
1 THRU 12 1N4148

OSCILLATOR
1 MONITOR 7500-05-10.239MHZ

VOLT REG
1 LM-340A

LED
1 THRU 6 T-1

TRANSISTOR
1 THRU 7 MPS 2222A