

BLUETOOTH HEADPHONE



USER'S MANUAL

1.Introduction

Congratulations and thank you for choosing the Bluetooth wireless bluetooth headphone .

This manual will help you operate the Bluetooth wireless headphone, but you should first familiarize yourself with the Bluetooth function of your mobile phone or other devices before using the headphone.

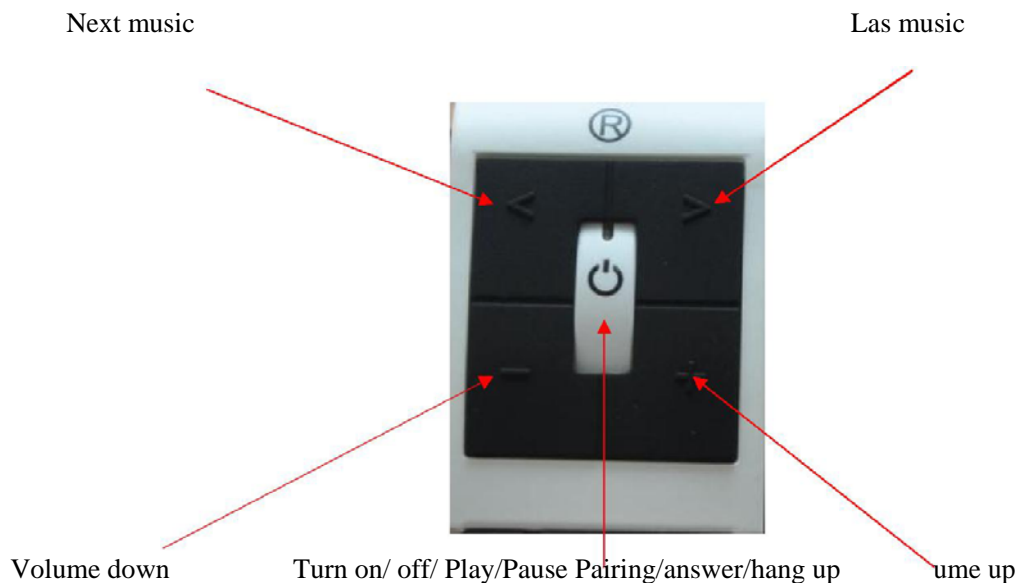
2.Package content:

1x Bluetooth wireless headphone

1x USB cable

1x manual

3.Connection Diagram



4.How to use


3.1 How to use.

General Functions:


Desired Result

Turn on /off

Required Action

Keep Pressing  for about 3 seconds when the device is off.(blue LED light) ,keep pressing for about 3 seconds when the device is on (blue LED light out)



Enter the Pairing mode

Keep pressing  for about 5 seconds, blue LDE and red LED quickly flash alternately when the device is off

Pairing

you should use a mobile phone and other device with Bluetooth function to pair with The headphone.

Play/Pause

Press  to play when the device is pause and press  to pause when device is playing.

Next music

Short press < is for next music


Last music

Short press > is for last music

Volume down

keep pressing “-” ,volume down

keep pressing “+” ,volume up

short , answer/ hang up the phone or keeping press the button for 2 seconds ,block the phone.

Charging Plug the charger to USB port of the device (Red LED is on .charge full ,the LED will be off)

3.2 Pairing the headphone with mobile phone or other device

To use your Bluetooth headphone, you must first pair your headphone with a mobile phone or a computer. Once your Bluetooth headphone is paired with a specific mobile phone, they will remain paired and automatically recognize each other whenever they are within range.

Pairing Bluetooth headphone with a phone and entertainment:

Turn on your phone and ensure its Bluetooth function is activated Turn on the headphone and switch to the pairing mode.

Search your Bluetooth devices on your phone by following the phone's instructions. Refer to your phone's user manual for more information.

After a few second the phone will list “hear01”as a discover device. Select it and follow your phone instruction to select this pairing.

Then select to connect with “hear01” from your phone.

You can play music; watch TV/movie and play game with your phone, then you can hear all the sound or music from the headphone. Also you can control the player by operating the headphone.

3.3 Charging the headphone

1. Insert USB charging cable into USB port of PC.
2. Connect charging cable with the charging port of headphone.

Note: Make sure that your headphone is full charged for 12 hours (first two charging:12 hours after power consumption over, then just charge for 2.5 hours)before initial use. Warning :

You must select a qualified charger from a regular manufacturer. 4. Technical specification

Bluetooth Specification: 2.1+EDR

Bluetooth Profile: A2DP AVRCP

RF Range: 10M

Playing time: up to 6.5 hours

Talking time: up to 9 hours

Standby time: up to 180 hours

Input: DC: 5V/130mA

Charging time:2.5-3 hours

Dimension (LxWxH): 80MMx80MMx42MM

Weight: 125G

This equipment has been tested and found to comply with the limits for a Class B digital device, pursuant to part 15 of the FCC Rules. These limits are designed to provide reasonable protection against harmful interference in a residential installation. This equipment generates, uses and can radiate radio frequency energy and, if not installed and used in accordance with the instructions, may cause harmful interference to radio communications. However, there is no guarantee that interference will not occur in a particular installation. If this equipment does cause harmful interference to radio or television reception, which can be determined by turning the equipment off and on, the user is encouraged to try to correct the interference by one or more of the following measures:

- Reorient or relocate the receiving antenna.
- Increase the separation between the equipment and receiver.
- Connect the equipment into an outlet on a circuit different from that to which the receiver is connected.
- Consult the dealer or an experienced radio/TV technician for help.

Caution: Any changes or modifications to this device not explicitly approved by manufacturer could void your authority to operate this equipment.

This device complies with part 15 of the FCC Rules. Operation is subject to the following two conditions: (1) This device may not cause harmful interference, and (2) this device must accept any interference received, including interference that may cause undesired operation.

The device has been evaluated to meet general RF exposure requirement. The device can be used in portable exposure condition without restriction.

European Union directives 1999/5/EC (R&TTE directive): Hereby, Dongguan Zhanxin Electronics Technology Co., Ltd declares that this device is in compliance with the essential requirements and other relevant provisions of Directive 1999/5/EC.