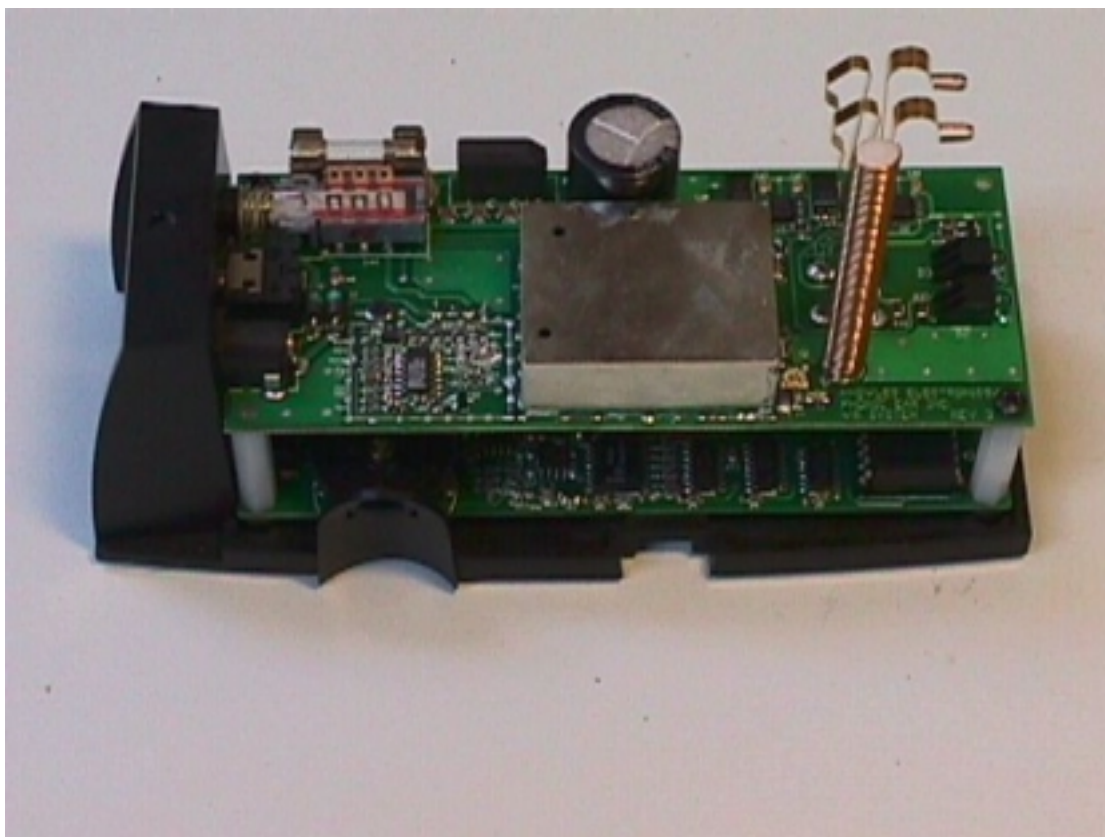


View of the Assembled Base Station Unit with Headset Unit Placed in Charging Position.

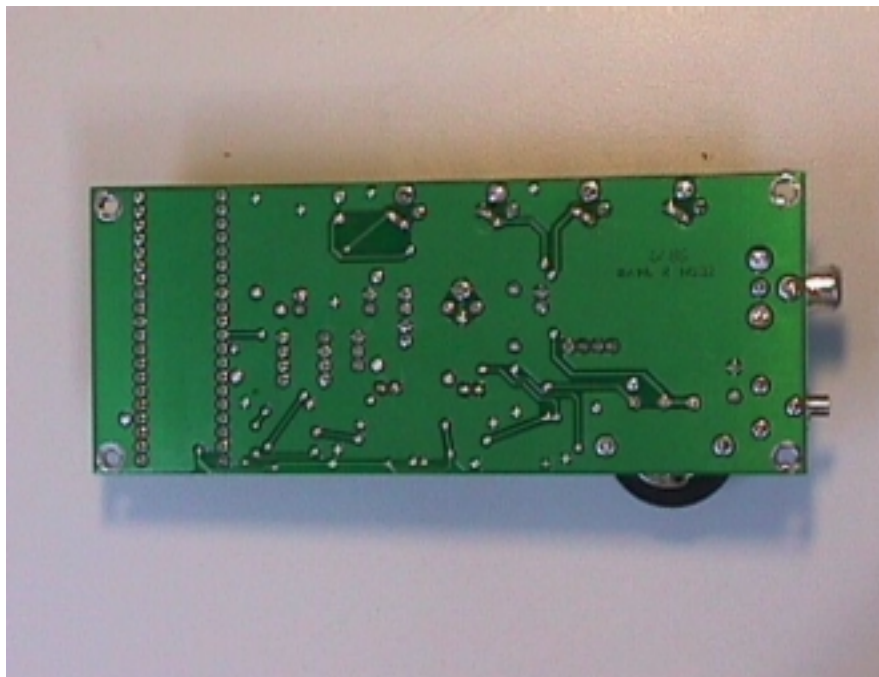
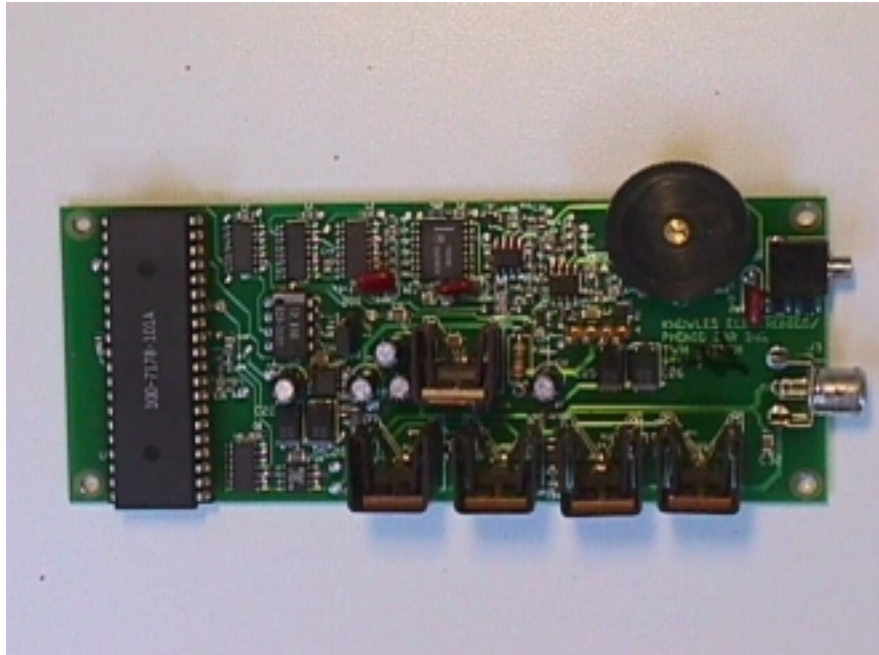
(All plastic parts are un-plated, and are not shown in the following photographs.)



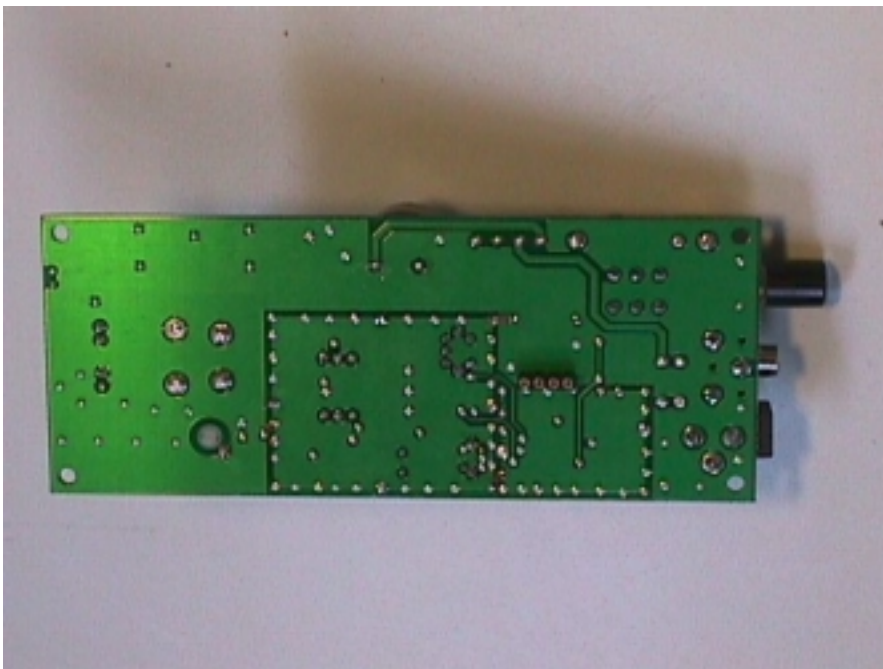
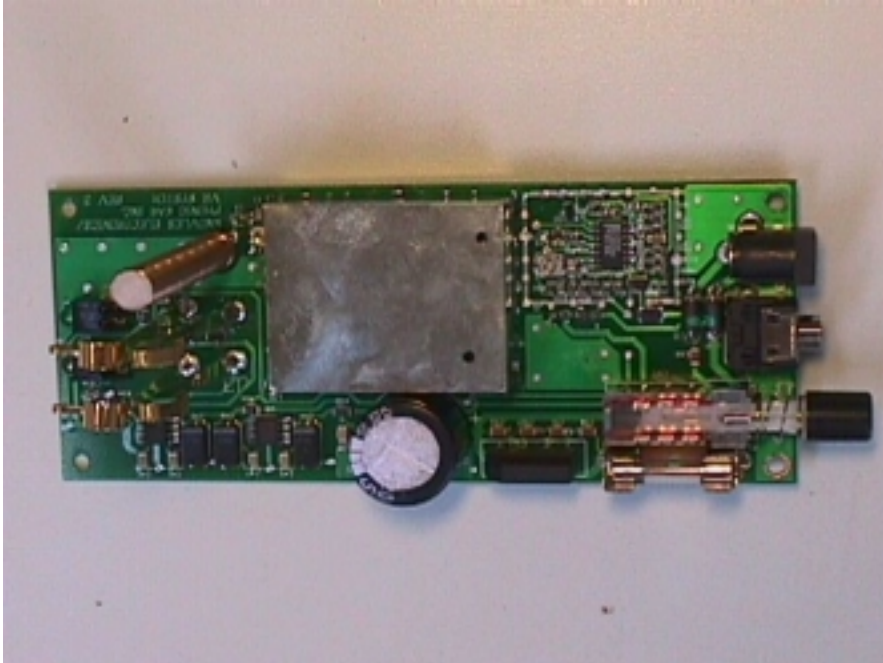
**View of the Base Station with Top Cover Removed, Showing Assembled PC Boards,
With Receiver Board on Top, and Magnetic Transmitter Board on Bottom**



Views of the Front and Back Side of the Magnetic Transmitter PC Board



Views of the Front and Back Side of the Receiver PC Board



View of Front and Backside of the Headset PC Board

