



TEST REPORT No.: (5212)055-0920

## TEST REPORT

To:	<b>CABEN ASIA PACIFIC LTD.</b>	To:	-
Attn:	Albert Au	Attn:	-
Address:	9/F, Tai building, 49 Austin Road, TST, Kowloon, Hong Kong	Address:	-
Fax:	86-755-8831-2343	Fax:	-
E-mail:	<a href="mailto:albertau@artsana.com">albertau@artsana.com</a>	E-mail:	-
Folder No.:	--		

Factory Name:	--
Location:	--
Product:	SAFARI PARK GIRL (PINK) Model No.: 00068451 400 070

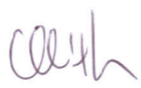
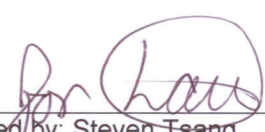


Sample No:	(5212)055-0920
Test Date(s):	March 2, 2012
Test Requested:	FCC Part 15 – 2011
Test Method:	ANSI C63.4 – 2009
FCC ID:	MVH04979668451PTX

The results given in this report are related to the tested specimen of the described electrical apparatus.

**CONCLUSION:** The submitted sample was found to COMPLY with requirement of FCC Part 15 Subpart C.

Authorized Signature:

 Reviewed by: Keith Yeung Date: March 14, 2012	 Approved by: Steven Tsang Date: March 14, 2012
---	---



**TEST REPORT No.: (5212)055-0920**

## Test Result Summary

EMISSION TEST		
Test requirement: FCC Part 15 – 2011		
Test Condition	Test Method	Test Result
		Pass Failed
Radiated Emission Test, 9kHz to 1GHz	ANSI C63.4	<input checked="" type="checkbox"/> <input type="checkbox"/>

## Report Revision & Sample Re-submit History:

--



**TEST REPORT No.: (5212)055-0920**

## **Test Laboratory & Test Instruments List**

Radiated and Conducted emissions measurements are investigated and taken pursuant to the procedures of ANSI C63.4 – 2009. An Open Area Test Site and Full Anechoic Chamber (FCC Listed Site, Registration No. 642151) are set up for investigation and located at:

### **BUREAU VERITAS HONG KONG LIMITED, EMC CENTRE**

No. 2106-2107, 21/F., Westin Centre,  
26 Hung To Road,  
Kwun Tong, Kowloon,  
Hong Kong

## **Test Instrument List**

### **Radiated Emission**

<b>EQUIPMENT</b>	<b>MANUFACTURER</b>	<b>MODEL NO.</b>	<b>SERIAL NO.</b>	<b>CALIBRATION DUE</b>
EMI TEST RECEIVER	R&S	ESCI	100379	18-OCT-2012
BILOG ANTENNA	SCHAFFNER	CBL6112D	25229	16-SEP-2012
OPEN AREA TEST SITE	BVCPS	N/A	N/A	07-JUL-2012
ANECHOIC CHAMBER	ALBATROSS	M-CDC	80374004499B	01-DEC-2012
COAXIAL CABLE	SUHNER	N/A	N/A	10-NOV-2012

**Remarks: -**

N/A: Not Applicable or Not Available

The measurement instrumentation uncertainty would be taking into consideration on each of the test result

**TEST REPORT No.: (5212)055-0920**

## **Equipment Under Test [EUT]**

### **Description of Sample:**

Product: SAFARI PARK GIRL (PINK)  
Model No.: 00068451 400 070  
Power Supply: 4.5Vd.c. ("AAA" size battery x 3)

### **Description of EUT Operation:**

The Equipment Under Test (EUT) is a CABEN ASIA PACIFIC LTD of Radio Control toy. It is a 4 buttons transmitter and operating at 49.86MHz. The EUT continues to transmit while buttons is being pressed, Modulation by IC, and type is pulse modulation.

The transmitter has different control:

1. Left button – Turn left control
2. Right button – Turn right control
3. Forward button – Forward control
4. Backward button – Backward control

### **Antenna Requirement (Section 15.203)**

The EUT is use of a permanently antenna. The antenna consists of 22.0cm long signal wire. It is soldered on the PCB. The antenna is not replaceable or user serviceable. The requirements of S15.203 are met. There are no deviations or exceptions to the specifications.

#### **Photo of Antenna**



## TEST REPORT No.: (5212)055-0920

### Test Results

#### Radiated Emissions (Fundamental)

Test Requirement: FCC Part 15 Section 15.235  
Test Method: ANSI C63.4  
Test Date(s): 2012-03-02  
Temperature: 22.0 °C  
Humidity: 85.0 %  
Atmospheric Pressure: 101.5 kPa  
Mode of Operation: Transmission mode  
Tested Voltage: 4.5Vd.c. ("AAA" size battery x 3)

#### Test Method:

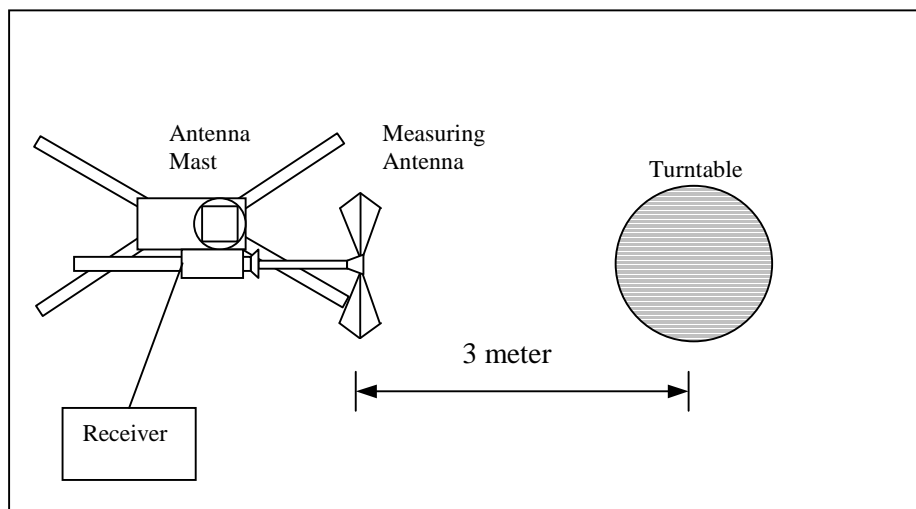
Radiated emissions measurements are investigated and taken pursuant to the procedures of ANSI C63.4 – 2009.

The equipment under test (EUT) was placed on a non-conductive turntable with dimensions of 1.5m x 1m and 0.8m high above the ground. 3m from the EUT, a broadband antenna mounting on the mast received the signal strength. During the test, each emission was maximized by: having the EUT continuously working, investigated all operating modes, rotated about all 3 axis (X, Y & Z) and considered typical configuration to obtain worst position, manipulating interconnecting cables, For battery operated equipment, the equipment tests shall be perform using new battery. The turntable was rotated to maximize the emission level. The antenna was then moving along the mast from 1m up to 4m until no more higher value was found. Both horizontal and vertical polarization of the antenna were placed and investigated.

For below 30MHz, a loop antenna with its vertical plane is place 3m from the EUT and rotated about its vertical axis for maximum response at each azimuth about the EUT. And the centre of the loop shall be 1m above the ground.

Location: The Roof, Westin Centre, 26 Hung To Road, Kwun Tong, Kowloon, Hong Kong

#### Test Setup: Open Area Test Site





## TEST REPORT No.: (5212)055-0920

### Limits for Field Strength of Fundamental Emissions [FCC 47CFR 15.235]:

Frequency Range of Fundamental [MHz]	Field Strength of Fundamental Emission [Peak] [μV/m]	Field Strength of Fundamental Emission [Average] [μV/m]
49.82 – 49.90	100,000 (100 dBμV/m)	10,000 (80 dBμV/m)

## Measurement Data

### Test Result of (Transmission mode): PASS

#### Detection mode: Peak

Frequency (MHz)	Polarity (H/V)	Antenna Factor and Cable Loss (dB/m)	Field Strength at 3m (dBμV/m)	Limit at 3m (dBμV/m)	Margin (dB)
49.86	V	6.5	48.9	100	-51.1

#### Detection mode: # Average

Frequency (MHz)	Polarity (H/V)	Antenna Factor and Cable Loss (dB/m)	Field Strength at 3m (dBμV/m)	Limit at 3m (dBμV/m)	Margin (dB)
49.86	V	6.5	**45.3	80	-34.7

# For pulse modulated devices and using measuring equipment employing a peak detection mode, properly adjusted for such factor as pulse desensitisation.

\*\*Duty Cycle Correction =  $20\log(0.661) = -3.6\text{dB}$

Note: Field Strength includes Antenna Factor and Cable Loss.

Receiver setting: RBW = 100KHz  
VBW = 300KHz



## TEST REPORT No.: (5212)055-0920

### Radiated Emissions (9kHz – 1GHz)

Test Requirement: FCC Part 15 Section 15.209  
Test Method: ANSI C63.4  
Test Date(s): 2012-03-02  
Temperature: 22.0 °C  
Humidity: 85.0 %  
Atmospheric Pressure: 101.5 kPa  
Mode of Operation: Transmission mode  
Tested Voltage: 4.5Vd.c. ("AAA" size battery x 3)

### Limits for Radiated Emissions [FCC 47 CFR 15.209]:

Frequency Range [MHz]	Quasi-Peak Limits [μV/m]
1.705-30	300
30-88	100
88-216	150
216-960	200
Above960	500



## TEST REPORT No.: (5212)055-0920

### Measurement Data

Test Result of (Transmission mode): **PASS**

Detection mode: **Quasi-Peak**

Frequency (MHz)	Polarity (H/V)	Antenna Factor and Cable Loss (dB/m)	Field Strength at 3m (dBμV/m)	Limit at 3m (dBμV/m)	Margin (dB)
99.72	H	11.1	28.3	43.5	-15.2
149.58	H	10.2	21.4	43.5	-22.1
199.44	H	7.7	19.3	43.5	-24.2
249.30	H	12.5	21.5	46.0	-24.5
299.16	H	14.3	23.5	46.0	-22.5
349.02	H	15.6	24.1	46.0	-21.9
398.88	H	16.4	26.2	46.0	-19.8
448.74	H	17.0	27.3	46.0	-18.7
498.60	H	17.1	27.6	46.0	-18.4
548.46	H	19.0	29.4	46.0	-16.6

Frequency (MHz)	Polarity (H/V)	Antenna Factor and Cable Loss (dB/m)	Field Strength at 3m (dBμV/m)	Limit at 3m (dBμV/m)	Margin (dB)
99.72	V	11.1	28.7	43.5	-14.8
149.58	V	10.2	22.2	43.5	-21.3
199.44	V	7.7	19.0	43.5	-24.5
249.30	V	12.5	21.4	46.0	-24.6
299.16	V	14.3	23.7	46.0	-22.3
349.02	V	15.6	24.3	46.0	-21.7
398.88	V	16.4	26.4	46.0	-19.6
448.74	V	17.0	27.5	46.0	-18.5
498.60	V	17.1	28.3	46.0	-17.7
548.46	V	19.0	29.1	46.0	-16.9

Note: Field Strength

includes Antenna Factor and Cable Loss.

Receiver setting: RBW = 100KHz  
VBW = 300KHz





## TEST REPORT No.: (5212)055-0920

### 26dB Bandwidth of Fundamental Emission

Test Requirement: FCC 47 CFR 15.235  
Test Method: ANSI C63.4  
Test Date(s): 2012-03-02  
Temperature: 22.0 °C  
Humidity: 85.0 %  
Atmospheric Pressure: 101.5 kPa  
Mode of Operation: Transmission mode  
Tested Voltage: 4.5Vd.c. ("AAA" size battery x 3)

### Test Method:

The bandwidth is measured at an amplitude level reduced from the reference level by a specified ratio. The reference level is the level of the highest amplitude signal observed from the transmitter at the fundamental frequency. Once the reference level is established, the equipment is conditioned with typical modulating signal to produce the worst-case (i.e. the widest) bandwidth.

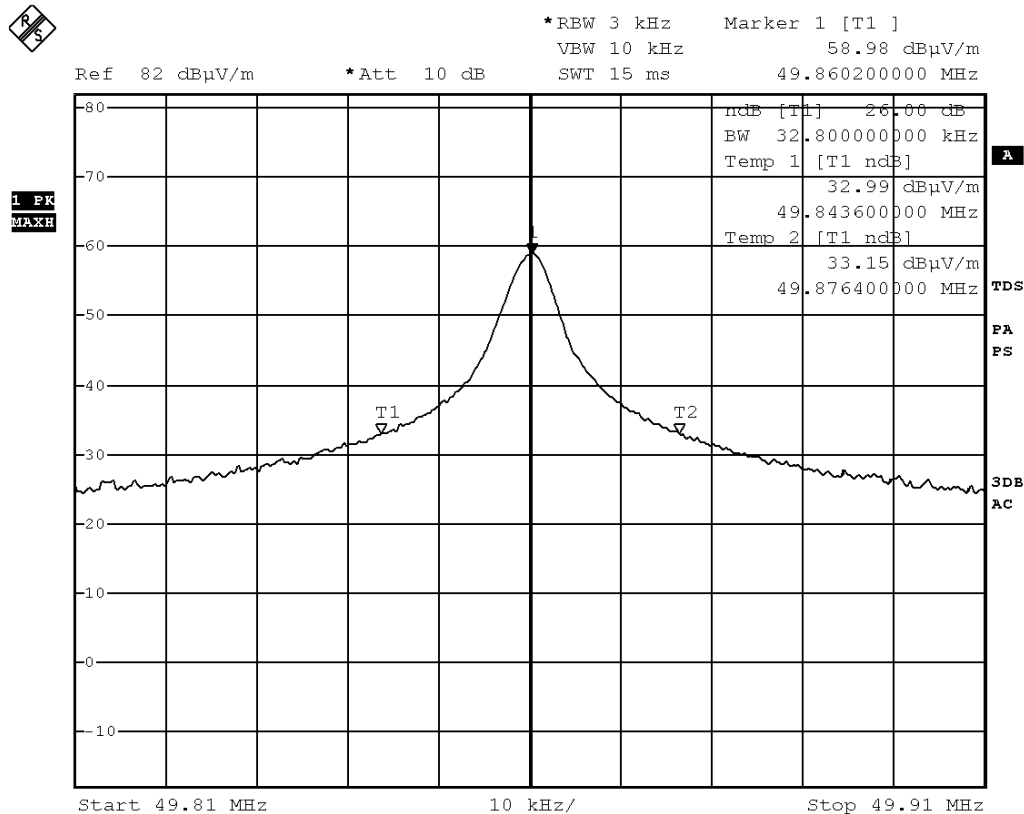
### Limits for 26dB Bandwidth of Fundamental Emission:

Frequency [MHz]	26dB Bandwidth [KHz]	Limits [MHz]
49.8602	32.8	within 49.82-49.90

**TEST REPORT No.: (5212)055-0920**

**Measurement Data**

**Test Result of 26dB Bandwidth of Fundamental Emission: PASS**



Date: 2.MAR.2012 10:32:30



## TEST REPORT No.: (5212)055-0920

### Duty Cycle Correction During 100msec:

Each function key sends a different series of characters, but each packet period (12.1msec) never exceeds a series of 4 long (1.0msec) and 10 short (0.4msec) pulses. Assuming any combination of short and long pulses maybe obtained due to encoding the worst case transmit duty cycle would be considered  $(4 \times 1.0\text{msec}) + (10 \times 0.4\text{msec})$  per 12.1msec = 66.1% duty cycle. Figure A through C shows the characteristics of the pulse train for one of these functions.

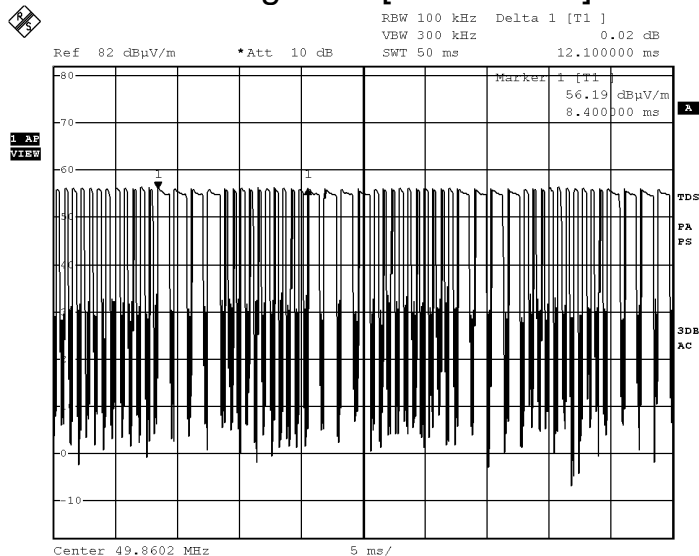
Remarks: -

$$\text{Duty Cycle Correction} = 20\text{Log}(0.661) = -3.6\text{dB}$$

The following figures [Figure A to Figure C] show the characteristics of the pulse train for one of these functions.

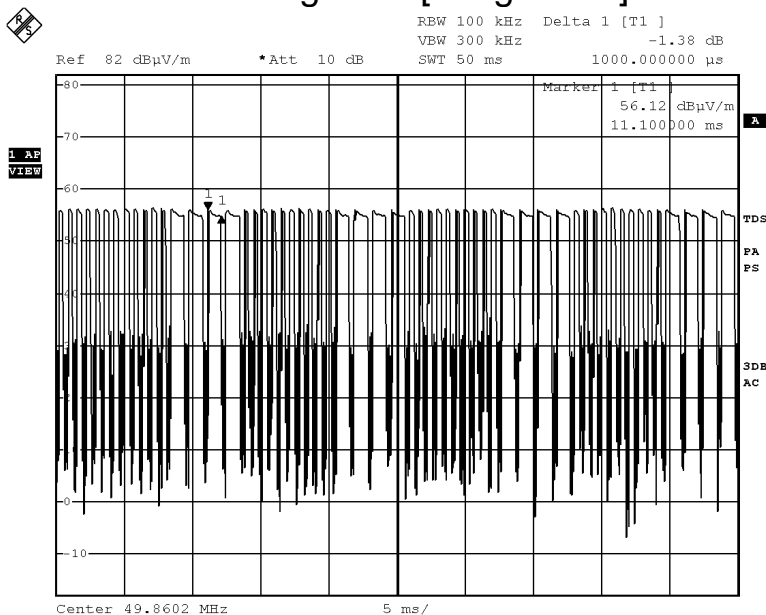
**TEST REPORT No.: (5212)055-0920**

**Figure A [Pulse Train]**



Date: 2.MAR.2012 10:33:39

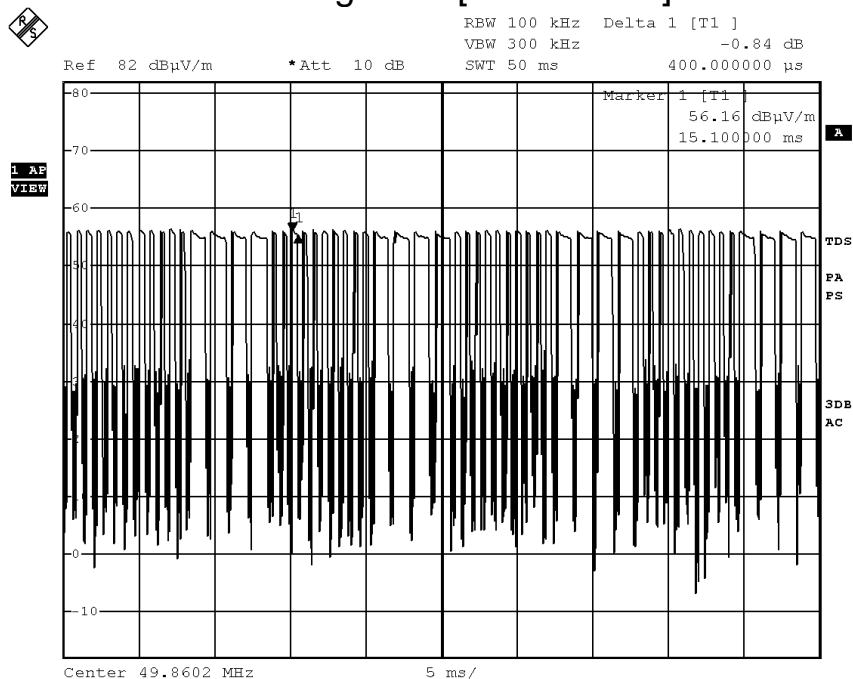
**Figure B [Long Pulse]**



Date: 2.MAR.2012 10:34:05

**TEST REPORT No.: (5212)055-0920**

**Figure C [Short Pulse]**



Date: 2.MAR.2012 10:34:40

**TEST REPORT No.: (5212)055-0920**

**Photographs of EUT**

**Front View of the product**



**Rear View of the product**



**Battery compartment**



**Battery Cover**





**TEST REPORT No.: (5212)055-0920**

**Photographs of EUT**

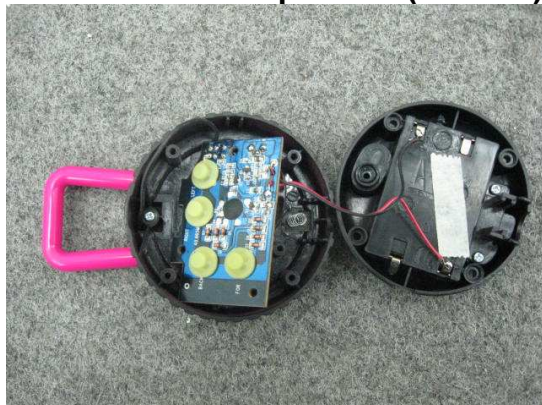
**Inner Circuit Top View**



**Inner Circuit Bottom View**



**Front View of the product (Internal)**



**Rear View of the product (Internal)**



**TEST REPORT No.: (5212)055-0920**

**Measurement of Radiated Emission Test Set Up**



**\*\*\*\*\* End of Report \*\*\*\*\***