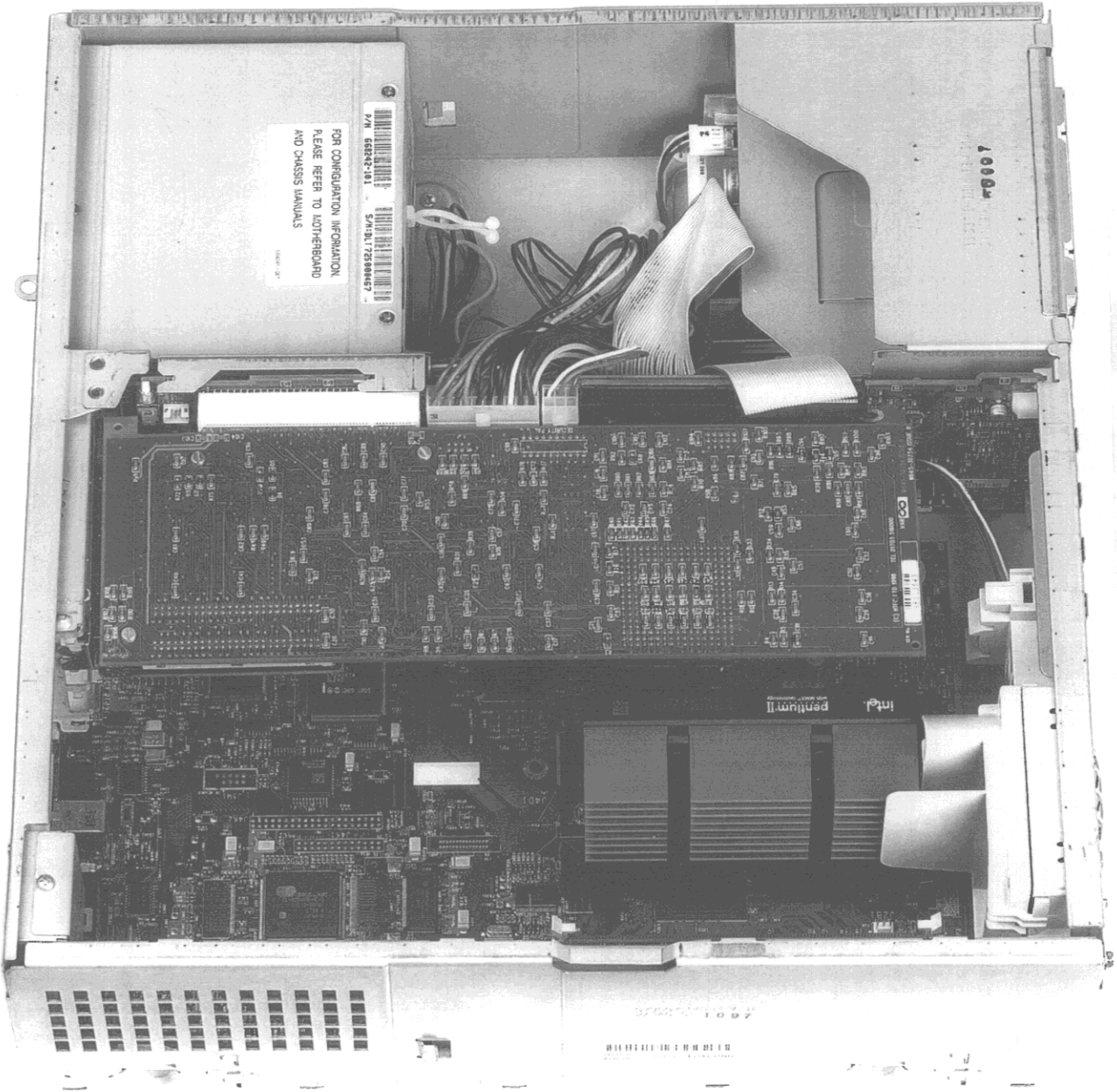
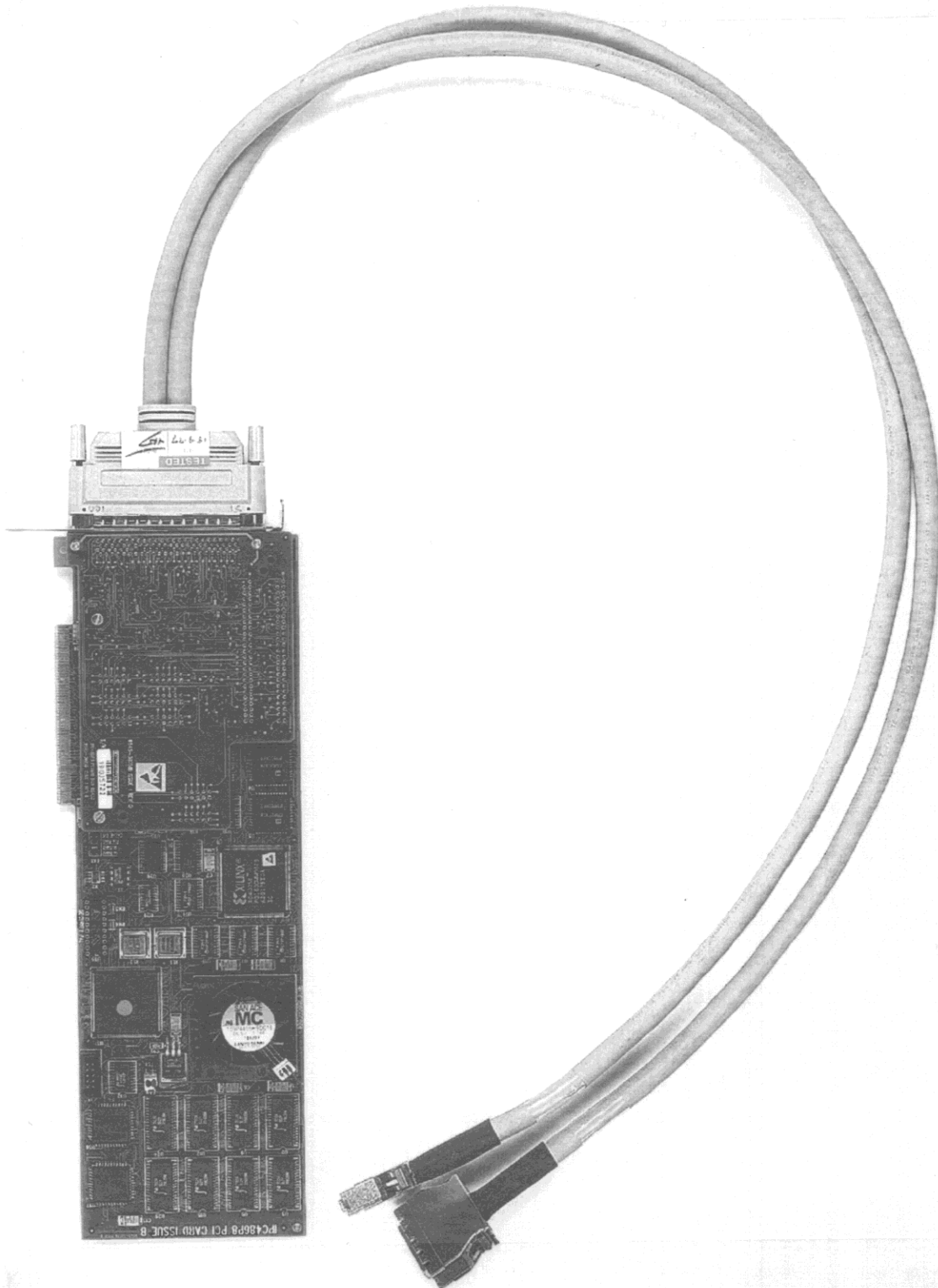


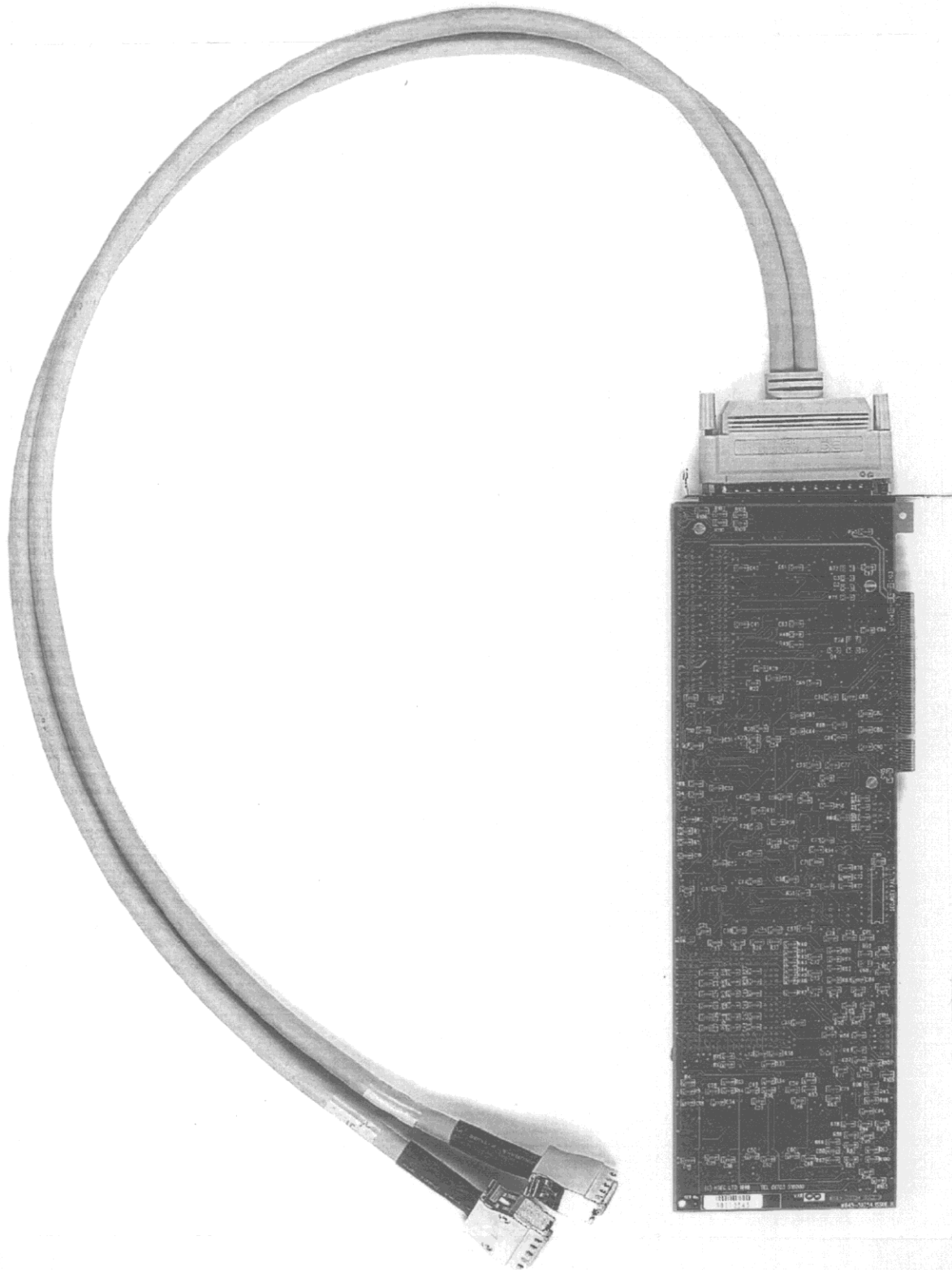
11.1 General Assembly PC Cover Removed



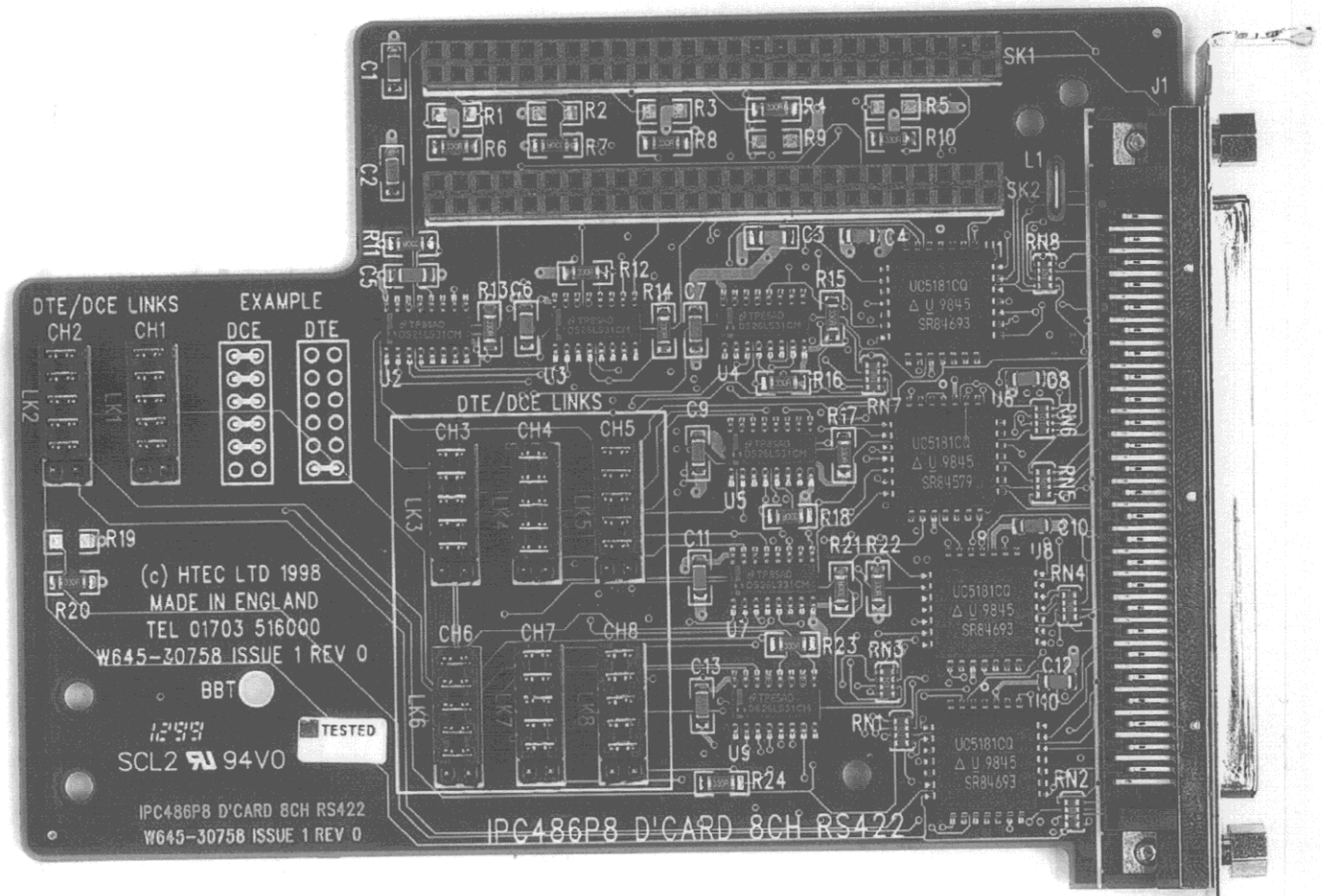
11.2 Circuit Board Component Side showing daughter card and cable



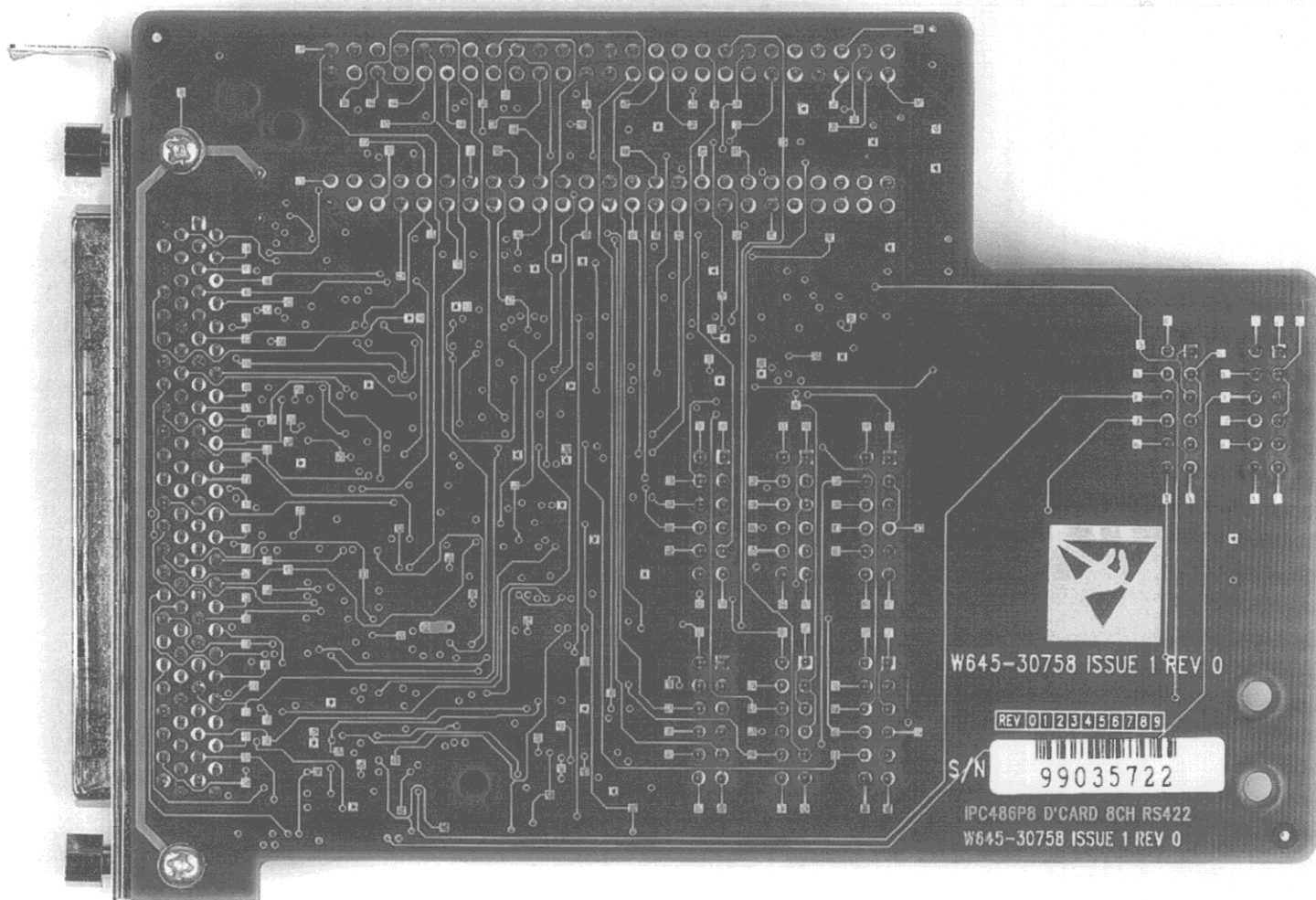
11.3 Circuit Board Underside showing daughter card and cable



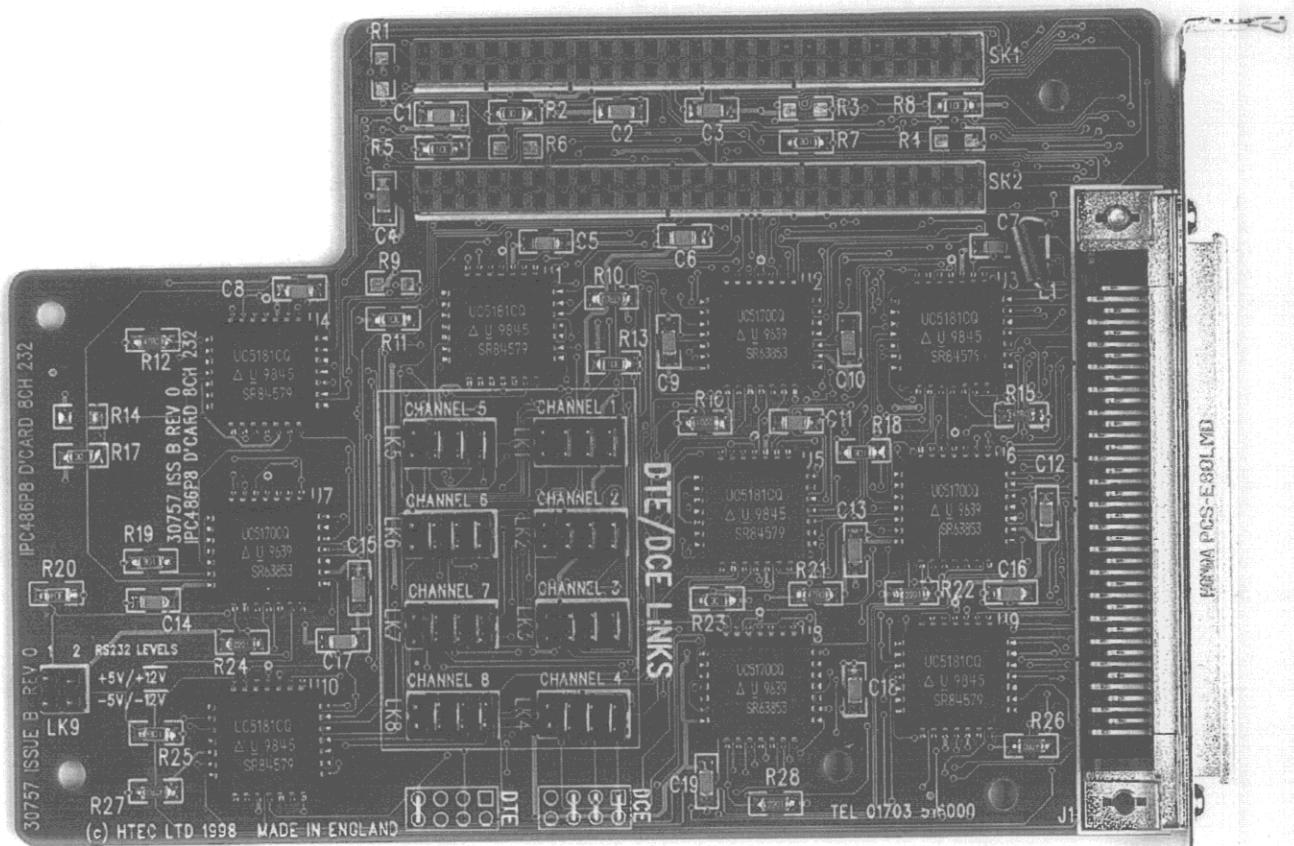
11.4 8 channel RS422 daughter card component side



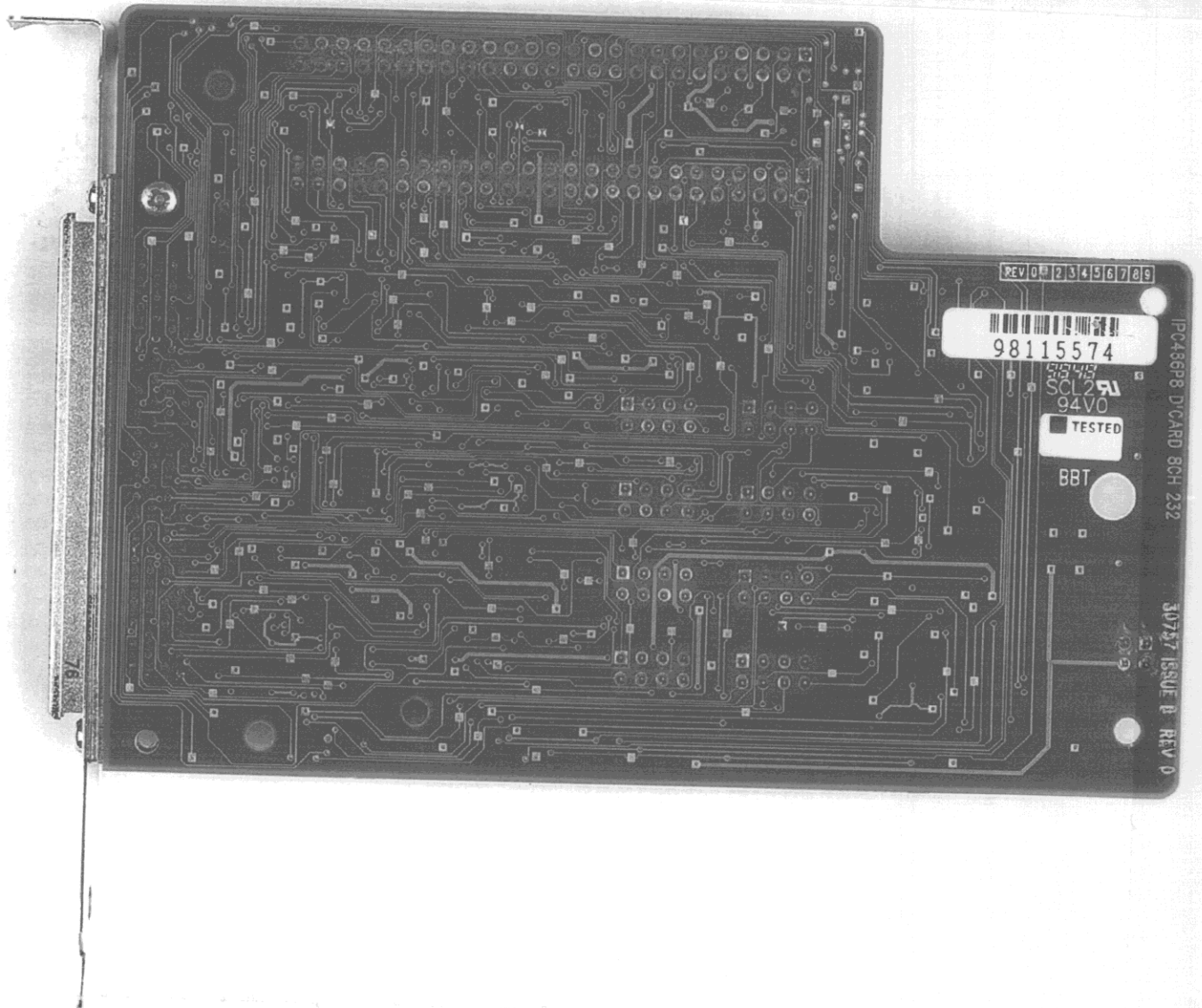
11.5 8 channel RS422 daughter card solder side



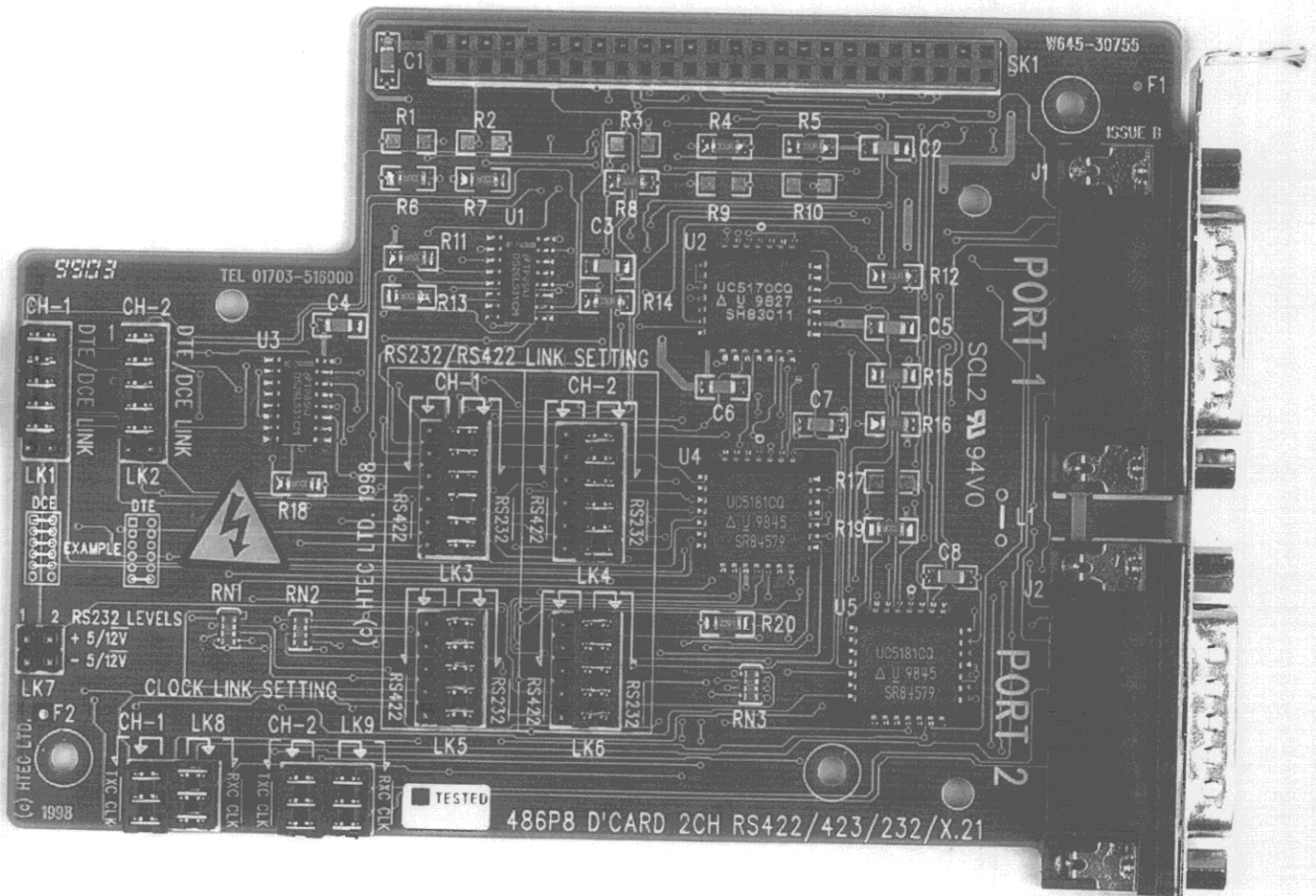
11.6 8 channel RS232 daughter card component side



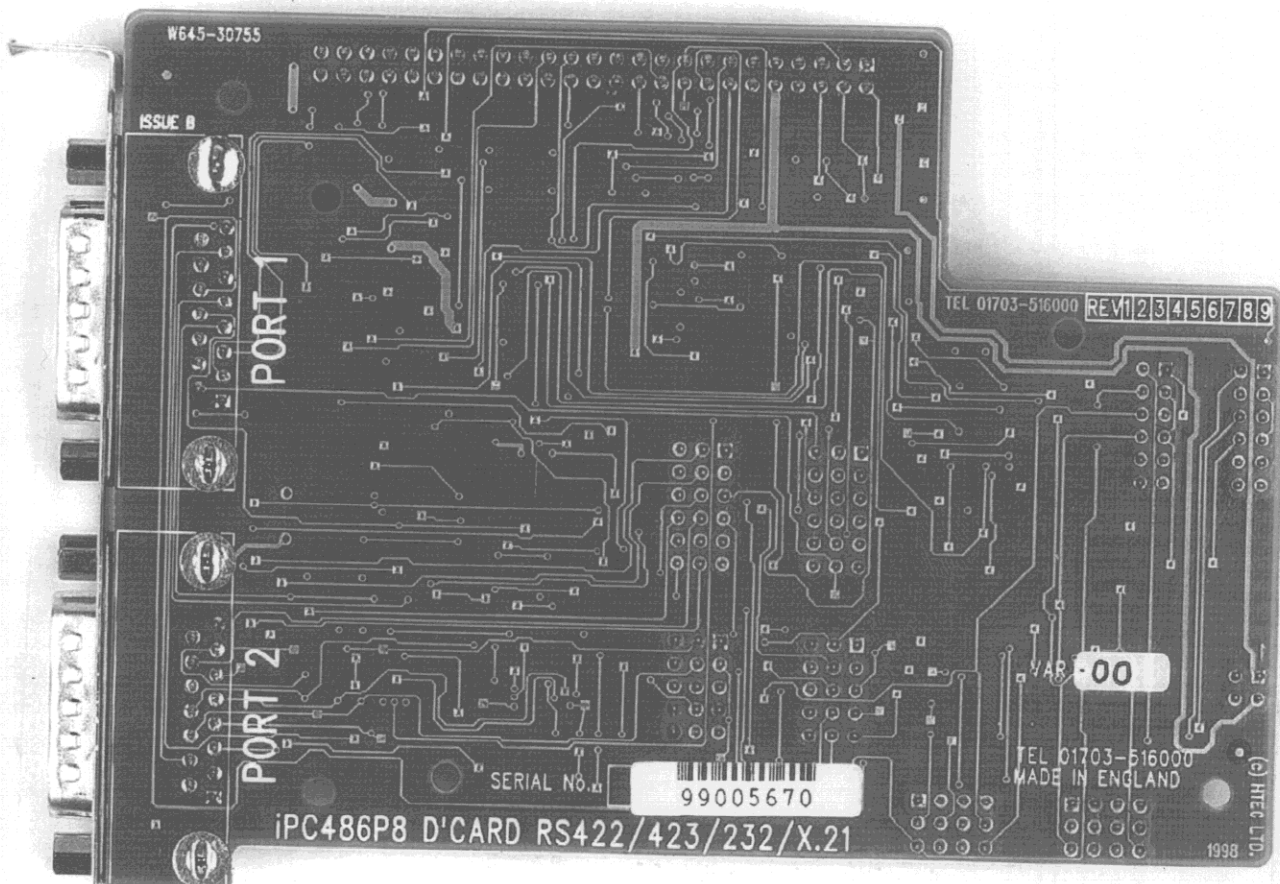
11.7 8 channel RS232 daughter card solder side



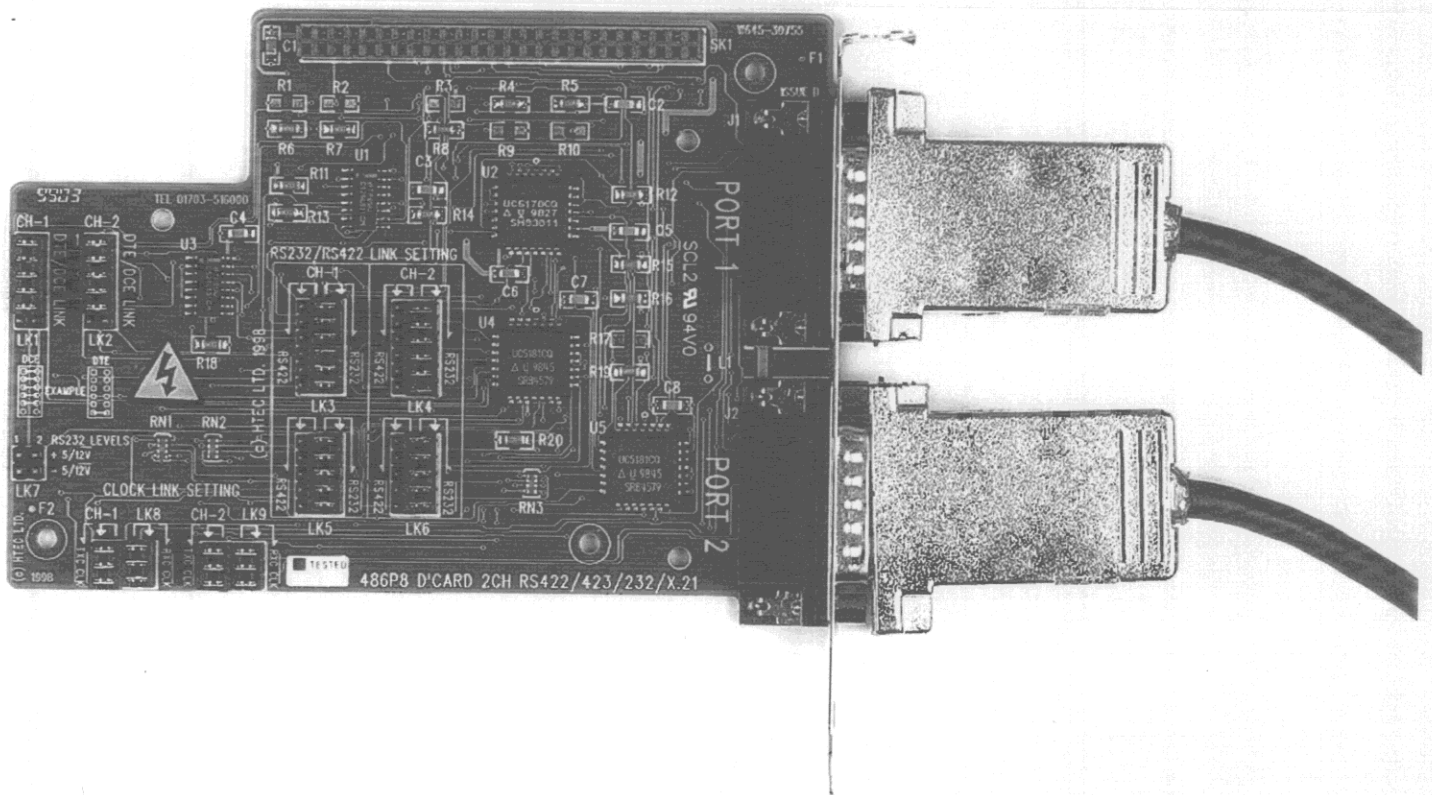
11.8 2 channel RS232 daughter card component side



11.9 2 channel RS232 daughter card solder side



11.10 Cable type for 2 channel RS232 card



11.11 Cable type for 8 channel RS232 card

