

Test Laboratory: Sporton International Inc.

#### Device Under Test Properties

Manufacturer	Dimensions [mm]	IMEI	DUT Type
	100.0 x 100.0 x 100.0		Verification Source

#### Exposure Conditions

Phantom Section	Position, Test Distance [mm]	Frequency [MHz]	Conversion Factor1.0
5G	FRONT, 5.55	60000.0	

#### Hardware Setup

Phantom	Medium	Probe, Calibration Date	DAE, Calibration Date
5G Cover - xxxx	Air -	EUmmWV3 - SN9413, 2019-02-13	DAE4 Sn918, 2018-06-20

#### Scans Setup

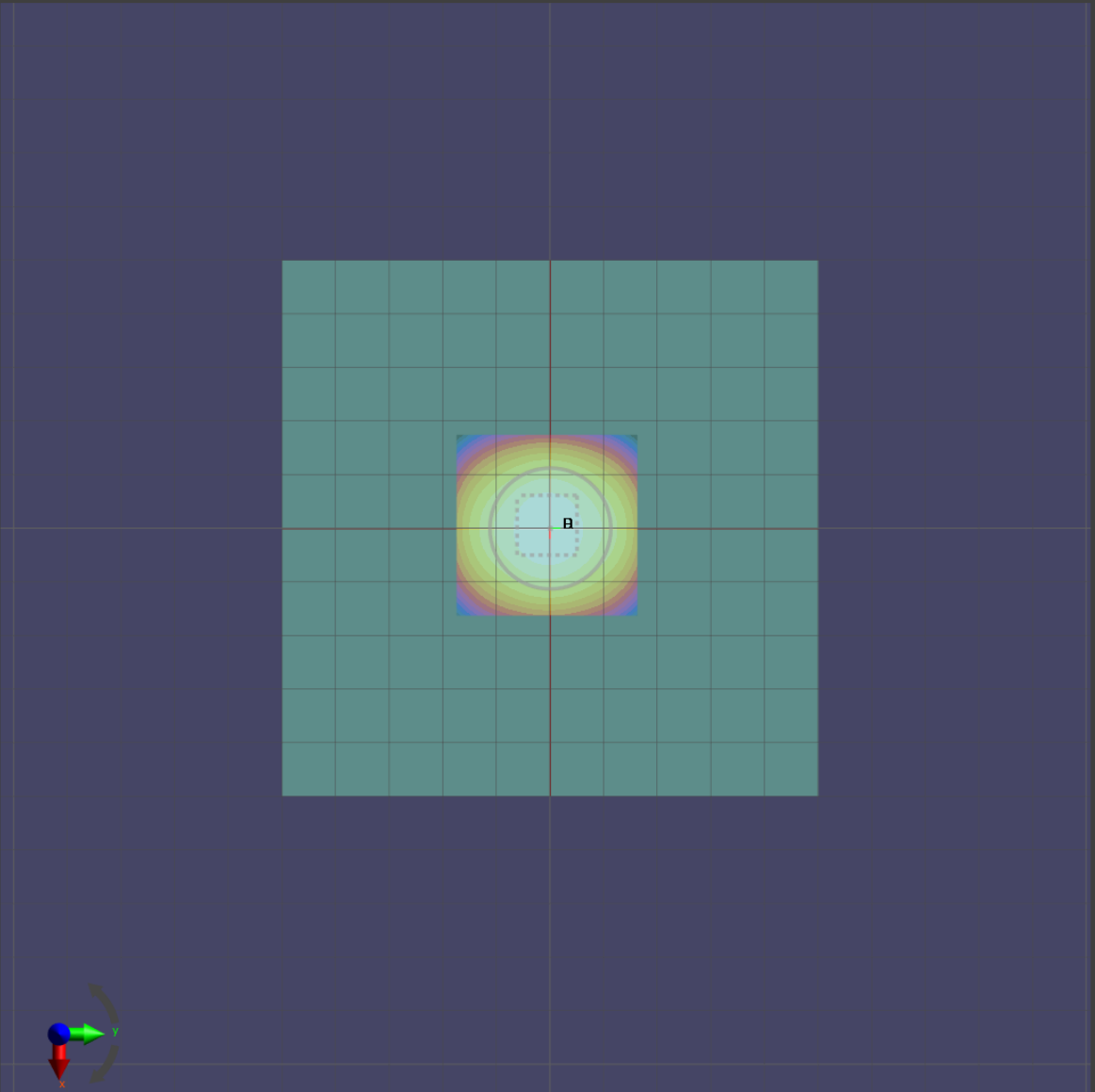
Grid Extents [mm]	32.5 x 32.5
Grid Steps [lambda]	0.25 x 0.25
Sensor Surface [mm]	5.55

#### Measurement Results

Date	2019-06-01, 01:34
Avg. Area [cm <sup>2</sup> ]	4.00
S <sub>avg inc</sub> [W/m <sup>2</sup> ]	240
S <sub>avg tot</sub> [W/m <sup>2</sup> ]	243
S <sub>peak</sub> [W/m <sup>2</sup> ]	469
E <sub>peak</sub> [V/m]	426
H <sub>peak</sub> [A/m]	1.11
Power Drift [dB]	0.01

Averaged [4.0 cm<sup>2</sup>] |Re{S}|(x,y,z,f0) [dB(243W/m<sup>2</sup>)]

0



-20