

Model KS Clock™

Charging Station with Bluetooth Audio and Alarm Clock



User Guide

Please read these instructions completely
before operating this product.

TABLE OF CONTENTS

IMPORTANT SAFETY INSTRUCTIONS	2
INTRODUCTION	4
Getting to Know Your Alarm Clock	4
AC Connection	6
Auto-Dimming Display	6
OPERATION	7
Kensington® Lock Installation - Example 1	7
Kensington® Lock Installation - Example 2	8
Threaded Security Bolt Installation - Example 1	9
Threaded Security Bolt Installation - Example 2	10
Setting the Time	11
DST (Daylight Saving Time)	12
Setting the Alarm Time	12
Turning Off the Alarm	13
Snooze	13
Pairing Via Bluetooth	14
Connecting Via AUX Input	14
CHARGING	15
Charging Via Qi Wireless Charging (Optional)	15
Charging Via Wired Chargers	16
Charging Via USB Ports	16
SPECIFICATIONS	17
TROUBLESHOOTING	17
KUBE SYSTEMS PRODUCTS LIMITED WARRANTY	20

IMPORTANT SAFETY INSTRUCTIONS

PRODUCT SAFETY: When used in the directed manner, this unit has been designed and manufactured to ensure your personal safety. Improper use of this product can result in potential electrical shock or fire hazards. Please read all safety and operating instructions carefully before installation and use, and keep these instructions handy for future reference.

CAUTION

**RISK OF ELECTRIC SHOCK
DO NOT OPEN**

CAUTION: To reduce the risk of electric shock do not remove cover (or back). No user serviceable parts inside. Refer servicing to qualified service personnel.



DANGEROUS VOLTAGE: The lightning flash with arrowhead, within an equilateral triangle, is intended to alert the user to the presence of uninsulated dangerous voltage within the product's enclosure that may be of sufficient magnitude to constitute a risk of electric shock to persons.



ATTENTION: The exclamation point within an equilateral triangle is intended to alert the user to the presence of important operating and maintenance (servicing) instructions in the literature accompanying the appliance.

WARNING: TO PREVENT FIRE OR SHOCK HAZARD, DO NOT EXPOSE THIS UNIT TO RAIN OR MOISTURE.



This Class B digital apparatus complies with European Union CE – EMC Directive (2004/108/EC) and European Union CE – Low Voltage Directive (2006/95/EC). This Bluetooth module is in compliance with the essential requirements and other relevant provisions of R&TTE Directive (1999/5/EC). This product is marked with the CE logo and uses radio frequency bands that are harmonized throughout the European Community.



FCC Compliance Statement: This device complies with Part 15 of the FCC rules. Operation is subjected to the following two conditions: (1) this device may not cause harmful interference, and (2) this device must accept any interference received, including interference that may cause undesired operation.

FCC WARNING

This equipment has been tested and found to comply with limits for a Class B digital device, pursuant to Part 15 of the FCC rules. These limits are designed to provide reasonable protection against harmful interference in residential installations. This equipment generates, uses, and can radiate radio frequency energy, and if not installed and used in accordance with the instructions, may cause harmful interference to radio communications. However, there is no guarantee that interference will not occur in a particular installation. If this equipment does cause interference to radio or television equipment reception, which can be determined by turning the equipment off and on, the user is encouraged to try to correct the interference by one or more of the following measures:

- Reorient or relocate the receiving Antenna.
- Move the equipment away from the receiver.
- Plug the equipment into an outlet on a circuit different from that to which the receiver is connected.
- Consult the dealer or an experienced radio/television technician for additional suggestions.

CAUTION: Any changes or modifications to this equipment not expressly approved by the party responsible for compliance could void your authority to operate the equipment.

WARNING:

STRANGULATION HAZARD: Infants have STRANGLED in power cords. Keep power cords more than 3 feet away from cribs, bassinets, play yards, and other safe sleep environments for infants.

IMPORTANT SERVICE SAFETY INSTRUCTIONS

Damages caused by non-compliance with this operating manual will void the warranty!

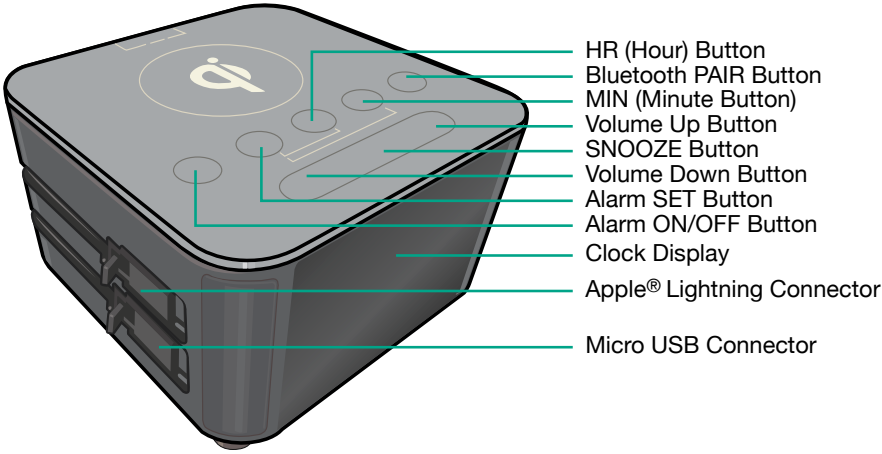
1. Read and Follow Instructions - All the safety and operating instructions should be read before the product is operated. Follow all operating instructions.
2. Retain Instructions - The safety and operating instructions should be retained for future reference.
3. Heed Warnings - Comply with all warnings on the product and in the operating instructions.
4. Power Sources - This product should be operated only from the type of power source indicated on the marking label. If you are not sure of the type of power supplied to your location, consult your video dealer or local power company. For products intended to operate from battery power, or other sources, refer to the operating instructions.
5. Overloading - Do not overload wall outlets or extension cords as this can result in the risk of fire or electric shock. Overloaded AC outlets, extension cords, frayed power cords, damaged or cracked wire insulation, and broken plugs are dangerous. They may result in a shock or fire hazard. Periodically examine the cord, and if its appearance indicates damage or deteriorated insulation, have it replaced by your service technician.
6. Power-Cord Protection - Power supply cords should be routed so that they are not likely to be walked on or pinched by items placed upon or against them. Pay particular attention to cords at plugs, convenience receptacles, and the point where they exit from the product.
7. Surge Protectors - It is highly recommended that the video equipment be connected to a surge protector. Doing so will protect the equipment from damage caused by power surges. Surge protectors should bear the UL listing mark or CSA certification mark.
8. Uninterruptible Power Supplies (UPS) - It is recommended that you connect the product to an uninterruptible power supply. An uninterruptible power supply has an internal battery that will keep the product running in the event of a power outage. Uninterruptible power supplies should bear the UL listing mark or CSA certification mark.

CAUTION: Maintain electrical safety. Power line operated equipment or accessories connected to this product should bear the UL listing mark or CSA certification mark on the accessory itself and should not be modified so as to defeat the safety features. This will help avoid any potential hazard from electrical shock or fire. If in doubt, contact qualified service personnel.

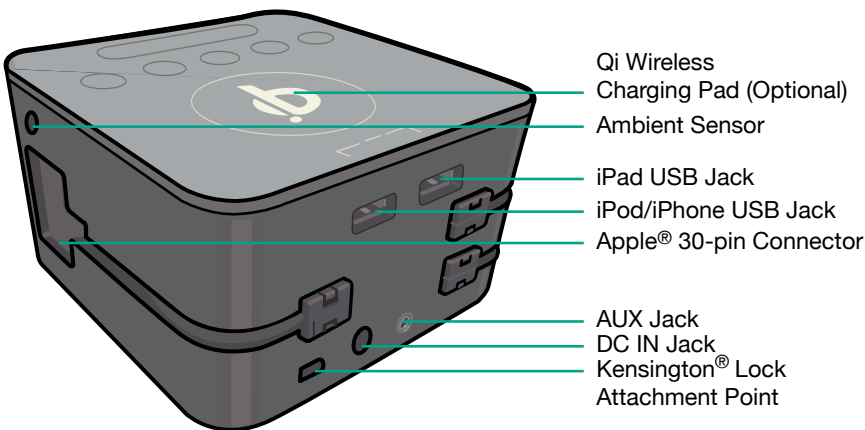
9. Ventilation - Slots and openings in the case are provided for ventilation to ensure reliable operation of the product and to protect it from overheating. These openings must not be blocked or covered. The openings should never be blocked by placing the video equipment on a bed, sofa, rug, or other similar surface. This product should never be placed near or over a radiator or heat register. This product should not be placed in a built-in installation such as a bookcase or rack unless proper ventilation is provided and the product manufacturer's instructions have been followed.
10. Attachments - Do not use attachments unless recommended by the product manufacturer as they may cause a hazard.
11. Water and Moisture - Do not use receivers or video monitors near water — for example, near a bath tub, wash bowl, kitchen sink or laundry tub, in a wet basement, near a swimming pool and the like.
12. Heat - The product should be situated away from heat sources such as radiators, heat registers, stoves, or other products (including amplifiers) that produce heat.
13. Accessories - Do not place this video equipment on an unstable cart, stand, tripod, or table. The video equipment may fall, causing serious damage to the product. Use this product only with a cart, stand, tripod, bracket, or table recommended by the manufacturer or sold with the product. Any mounting of the product should follow the manufacturer's instructions and use a mounting accessory recommended by the manufacturer.

Getting to Know Your Alarm Clock

FRONT/LEFT SIDE



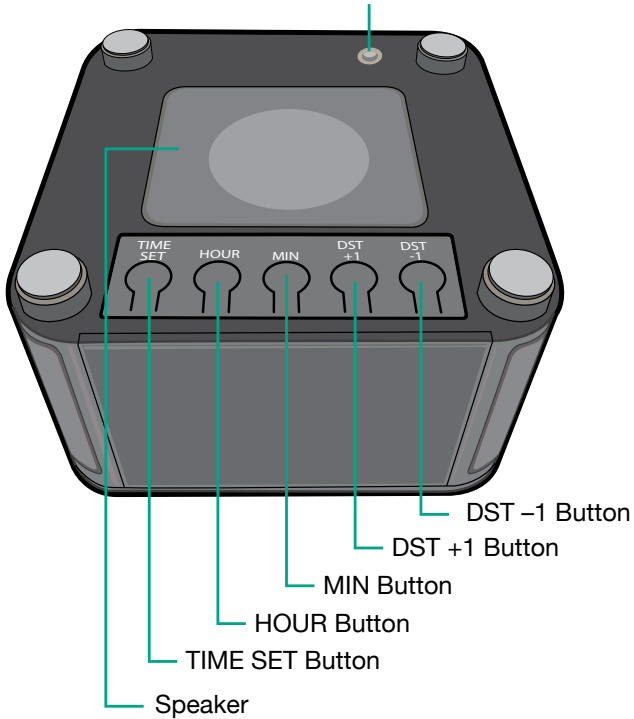
REAR/RIGHT SIDE



Getting to Know Your Alarm Clock

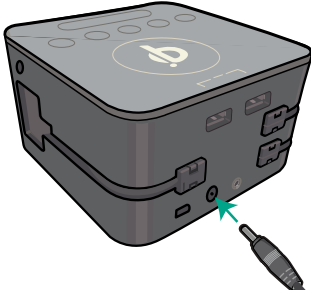
BOTTOM

Threaded Security Bolt Socket
*Used to connect a security lanyard
or retractor.*

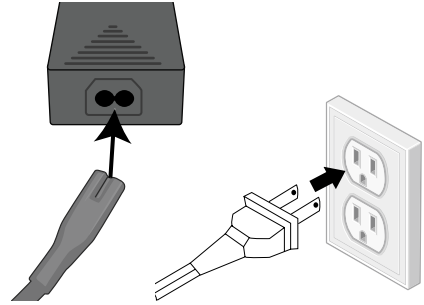


AC Connection

- 1 Insert the power supply plug into the DC In jack on the rear of the unit.

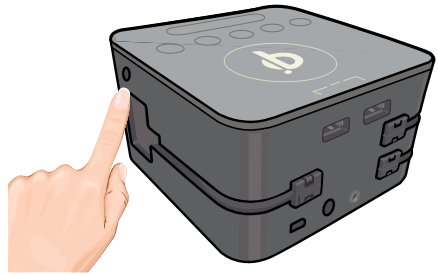


- 2 Insert the AC cord into the power supply. Insert AC plug into an AC outlet having 100-240v (50-60hz); the clock display will show a time.



Auto-Dimming Display

- 1 The ambient light sensor on the right side of the unit will dim the clock display when it detects the ambient light is low. Make sure the right side of the unit is clear of obstructions.



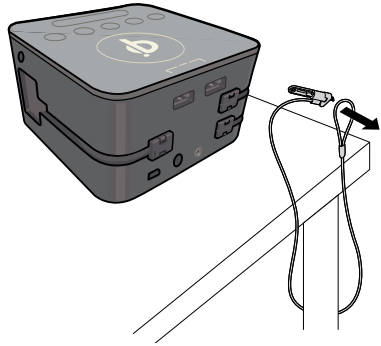
Kensington® Lock Installation - Example 1

If desired, tether to a wall or piece of furniture by attaching a Kensington® security cable to the Kensington® Lock Attachment Point. Note that there are many types of Kensington® security cables, the next two pages just show a couple of examples. Refer to the owner's manual that came with the security cable.

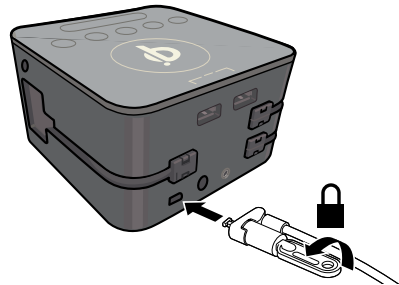
NOTE: Security cable/bolt/hardware not included.

1 TO ATTACH TO A TABLE LEG USING KENSINGTON® KEYED LOCK:

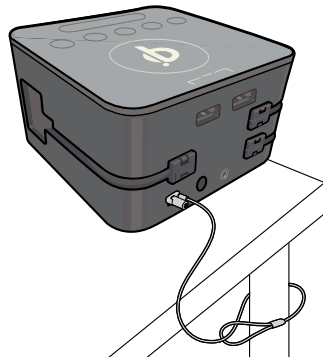
Route the Kensington® security cable around the leg of a table (or similar) and then through the loop.



2 Insert the Kensington® Lock into the Kensington® Lock Attachment Point. Lock the Kensington® Lock using the supplied key.



3 The unit is now secure.



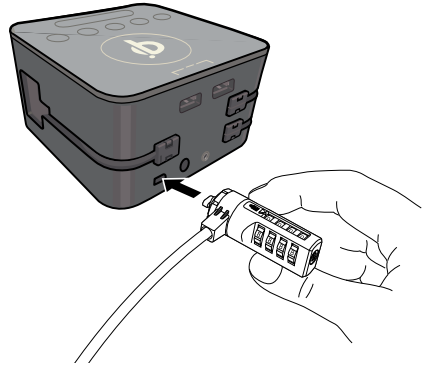
Kensington® Lock Installation - Example 2

NOTE: Security cable/bolt/hardware not included.

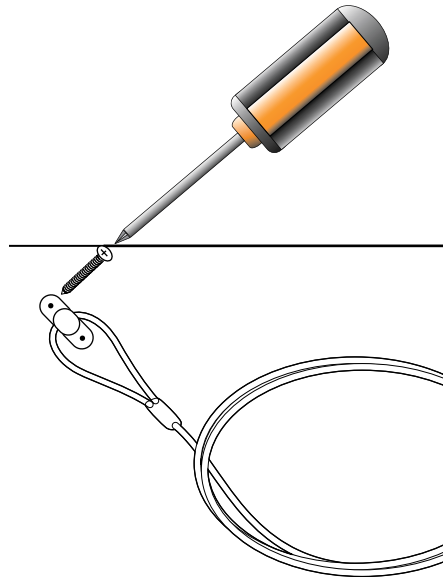
1 TO ATTACH TO A PIECE OF FURNITURE OR WALL:

Insert the Kensington® Combo Lock into the Kensington® Lock Attachment Point.

Scramble Combo Lock combination to lock.



2 Place the loop under a U-Bracket and secure using the hardware included with the Kensington® Kit (not included).



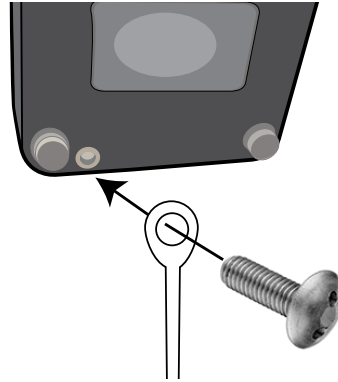
Threaded Security Bolt Installation - Example 1

If desired, tether to a wall or piece of furniture by attaching a security cable to the Threaded Security Bolt Socket on the bottom of the unit. Note that there are many types of installations, the next two pages just show a couple of examples. Refer to the owner's manual that came with the Security Cable Kit.

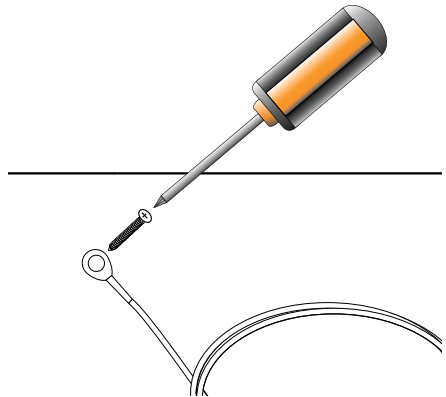
NOTE: Security cable/bolt/hardware not included.

1 TO ATTACH USING STANDARD TETHER:

Bolt the eyelet of the cable into the bottom of the unit using a Drilled Spanner Screwdriver (shown below).



2 Secure using the hardware included with the Kit (not included).



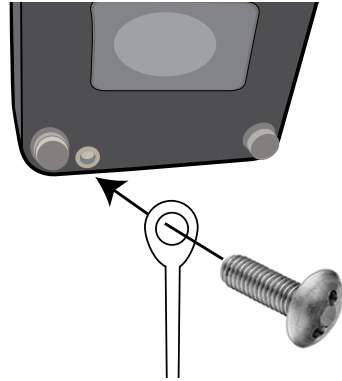
Threaded Security Bolt Installation - Example 2

NOTE: Security cable/bolt/hardware not included.

1

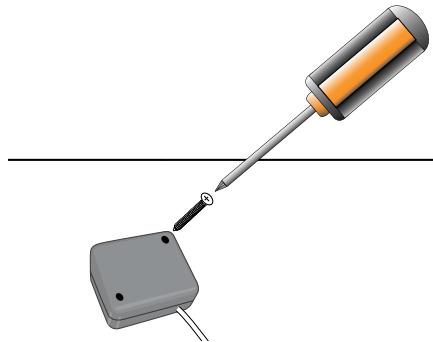
TO ATTACH USING RETRACTOR WITH EYELET:

Bolt the eyelet side of the cable into the bottom of the unit using a Drilled Spanner Screwdriver (shown below).



2

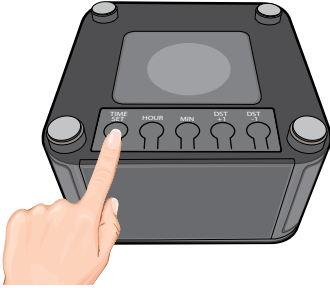
Secure using the hardware included with the Kit (not included).



Setting the Time

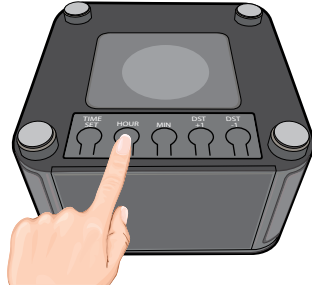
1

To set the time, turn the unit upside down. Press and release the TIME SET button on the bottom of the unit; the time will flash in the display.



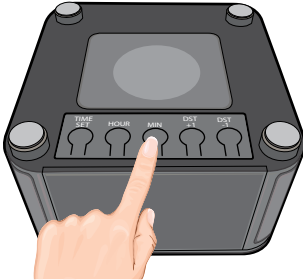
2

Within 3 seconds, press the HOUR button to set the hour, making sure to set the correct AM/PM.



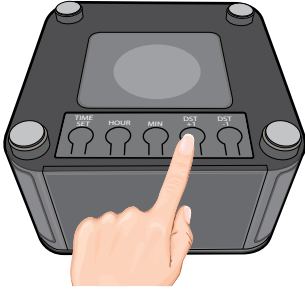
3

Within 3 seconds, press the MIN button to set the minutes. When done, wait a few seconds and the clock will stop flashing.

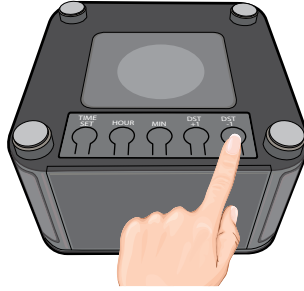


DST (Daylight Saving Time)

- 1 To enable daylight saving time, press the DST +1 button; the time will increase by one hour.



- 2 To cancel daylight saving time, press the DST -1 button; the time will decrease by one hour.

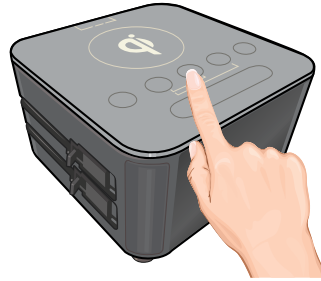


Setting the Alarm Time

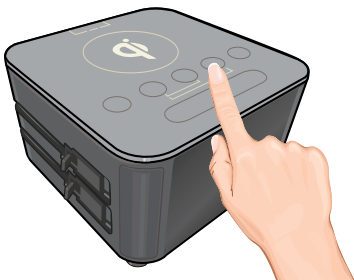
- 1 Press and release the Alarm SET button on the top of the unit; the Alarm icon will flash in the display.



- 2 Within 3 seconds, press the HOUR button to set the alarm hour, making sure to set the correct AM/PM.



- 3 Within 3 seconds, press the MIN button to set the minutes. When done, wait a few seconds and the Alarm icon will stop flashing.



- 4 To activate the alarm, press the Alarm ON/OFF button once; the unit will beep and the Alarm icon will appear in the display.



Turning Off the Alarm

- 1 When the alarm is sounding, press the Alarm ON/OFF button to turn it off. It will NOT be set for the next day. If desired, reset alarm following the instructions above.



IMPORTANT ALARM NOTE:

- The Alarm will only go off once (single day alarm) and will not repeat daily.

Snooze

- 1 While the alarm is sounding, press the SNOOZE button; the alarm will turn back on automatically 3 minutes later. You can repeat the Snooze function up to three times. The clock display will pulse while the Snooze function is activated.

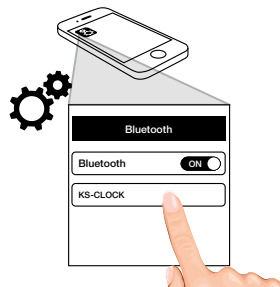


Pairing Via Bluetooth

- 1 Press and release the Bluetooth button on the top of the unit; the button will flash blue and white.



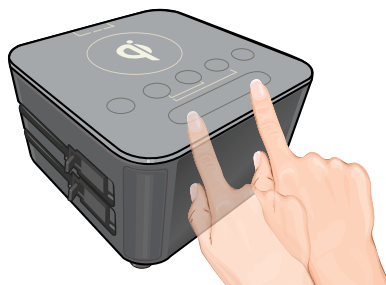
- 2 On the Bluetooth device, enable Bluetooth and select "KS-CLOCK" from the Device List. It may take a few seconds for it to appear.



- 3 Some Bluetooth devices will ask you to accept the connection. If the units are paired properly, the speaker will beep and the Bluetooth icon will appear.



- 4 Start playback on the external device. Adjust the volume using the external device's Volume buttons as well as the Volume Up and Down buttons on this unit.



Connecting Via AUX Input

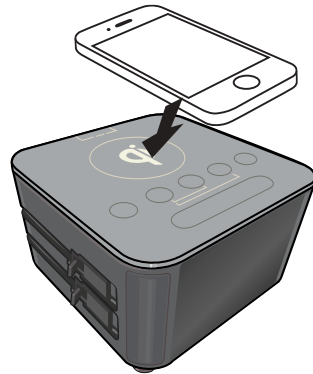
- 1 Insert one end of the audio cable (included) into the LINE OUT jack on your external audio unit and the other end into the AUX IN jack on the rear of this unit. The external device will automatically be selected when the audio cable is connected. Start playback of the external unit and the external audio unit's output sound will be heard through this unit's speakers.

The Volume Up and Down buttons will not work on this unit when connected via the AUX IN jack. Use your external device's volume controls.



Charging Via Qi Wireless Charging (Optional)

- 1 Designed with inductive charging capabilities, this unit allows you to place your Qi compatible device on top of the unit for wireless charging. It's that simple! Make sure your device is Qi compatible or utilizes a Qi case or other Qi charging option (both available separately), then place the unit on top of the Alarm Clock.



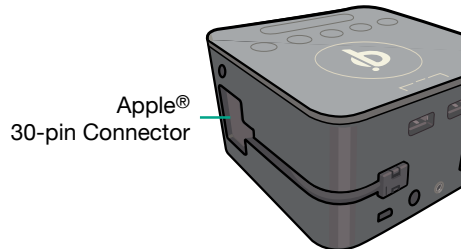
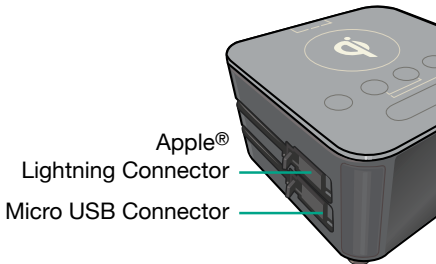
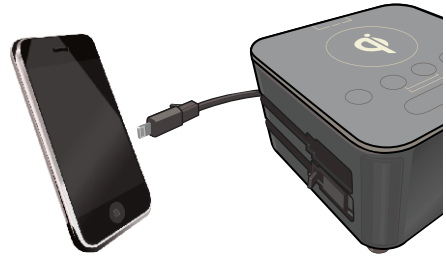
Charging Via Wired Chargers

- 1 Charge up to three devices using the built-in Charging Cables. Simply pull out the desired connector and insert it into your device.

Apple® Lightning Connector Used for charging newer Apple devices with the Lightning jack.

Apple® 30-Pin Connector: Used for charging older Apple devices with the 30-pin jack.

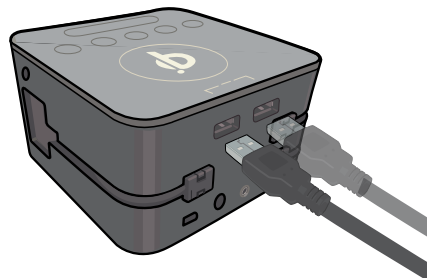
Micro USB Connector: Used for charging devices that utilize the Micro USB jack.



Charging Via USB Ports

- 1 Charge up to two additional devices using the two USB ports on the rear of the unit but it is not recommended as it could disable the Bluetooth function. These ports can output 2.4-Amps each. Each outlet has its own intelligent auto-configuring USB circuit that allows any device to charge properly.

These ports are labeled, “iPod/iPhone” and “iPad” but can be used to connect most USB cables in order to accommodate different connections.



CHARGING CABLES:

- The charging cables are replaceable if they become damaged.
- **Caution:** Charging cables do not stretch.

SPECIFICATIONS

Specifications

Power Requirements	12VDC, 5A
Operating Temperature	15° to 95° F
Weight.....	1.1 lbs (0.5 kg)
Dimensions (L x W x H).....	4.13 x 4.13 x 2.28 inches (105 x 105 x 58 mm)

TROUBLESHOOTING

If you have any trouble with your system, try these simple steps which should handle most common issues.

- SYMPTOM:** Cannot change time display; pressing the TIME SET buttons does not do anything.

SOLUTION(s): The unit has been locked out from manually changing the time. To change the time, the unit has to be unlocked or the desired time needs to be set by the KS Programmer. See **Setting the Time** section.
- SYMPTOM:** The Alarm worked fine this morning but when attempting to activate it for tomorrow morning, the unit beeps twice and indicates “Set Alarm”.

SOLUTION(s): The alarm of KS Clock is a one-day alarm. This means a user will always have to manually set the alarm time for each use.
- SYMPTOM:** KS Clock will not pair with a Bluetooth device.

SOLUTION(s): Enter Bluetooth list (in Setting’s menu of Bluetooth device) and delete any entry named “KS CLOCK”. On Apple devices, this function may be executed by selecting “Forget this device”. After erased, attempt to pair again; see **Setting the Time** section.
- SYMPTOM:** Pairing with a Bluetooth device was performed earlier and the device was left connected for several hours. Will pairing be needed again?

SOLUTION(s): Check Bluetooth status on the device to find out. If the device indicates no Bluetooth device, then pairing will need to be performed.

Check the Bluetooth icon display on the Clock. If the device is still connected to KS Clock, the Bluetooth icon will be lit.

KS Clock will not actively disconnect any connected Bluetooth device. Most devices do the same. Devices can remain connected constantly unless manually disconnected or after a Power outage.

SYMPTOM: KS Clock paired with a Bluetooth device earlier today (or yesterday) but it does not work anymore now.

SOLUTION(s): Enter Bluetooth list (in Setting's menu of Bluetooth device) and delete any entry named "KS CLOCK". On Apple devices, this function may be executed by selecting "Forget this device". After erased, attempt to pair again; see **Setting the Time** section.

KS clock may be programmed by the KS Programmer to periodically stop pairing with recent devices. The period of time for this function is defined by the "Clear Pairing List" function of the KS Programmer. When KS clock executes this function, the Bluetooth user will need to manually pair again with KS Clock in order to re-establish Bluetooth connection. In order to prevent KS Clock from rejecting the reconnection, ensure that the Bluetooth name KS-CLOCK is deleted from the device list before re-pairing.

The clear pairing list cycle time begins from the time when this function was programmed into KS Clock by the KS programmer. The function is suspended while a device is connected.

SYMPTOM: When playing music via the AUX Audio connection, pressing the Volume button on top of KS Clock does not change the volume of the music.

SOLUTION(s): The volume buttons are only for Bluetooth music. Please use the volume on your audio device to change the volume of music played on KS Clock.

SYMPTOM: The clock display is too bright.

SOLUTION(s): The brightness setting is set by the KS Programmer. Please see KS Programmer instructions. There is a setting for daytime and a separate setting for nighttime.

SYMPTOM: The clock display is too dim.

SOLUTION(s): Ensure that the right side of KS Clock has at least 1 inch of free area. There is a small port hole on the right side where KS Clock has an ambient light sensor. This sensor needs to be exposed to ambient room light so that when the room is bright, the clock display will brighten up.

The brightness setting is set by the KS Programmer. Please see KS Programmer instructions. There are separate settings for daytime and nighttime.

SYMPTOM: KS Clock is configured for manual time setting and the displayed time is now DST. Pressing DST- does not do anything and pressing DST+ causes the time to advance even further by another hour.

SOLUTION(s): The time was incorrectly set by a previous setup. Press the Clock set button and manually change the time one hour behind. After correct setup, pressing DST+ should advance the time by one hour to summer time, and pressing DST- will skip back the time by one hour to Winter time.

SYMPTOM: After connecting a device to one of the charger cables of KS Clock, the Apple device indicates “Not Charging” or “Incompatible Device”.

SOLUTION(s): Unplug the Apple device from the KS Clock and then plug it back in. Occasionally a loose connection in the plug may cause this. Lightly clean the connector free of any foreign matter.
One device may be connected to each charging cable and to each USB outlet; the KS Clock can simultaneously charge all the devices.

SYMPTOM: After setting the alarm time, the alarm was not activated.

SOLUTION(s): After setting the alarm time, turn the alarm ON by pressing the Alarm ON/OFF button. When the alarm is activated, the Alarm icon will appear in the clock display.

SYMPTOM: The Clock display does not show the time but instead displays “C2” or “CL”.

SOLUTION(s): The message “C2” indicates that there is a button that is constantly depressed. Please pay particular attention to the buttons underneath the unit. Make sure KS Clock is resting on a flat surface with no surface irregularities or objects that can press upwards onto the buttons.
The message “CL” indicates a clock functional error. If this message persists, the unit will need to be returned for service.

SYMPTOM: The alarm was activated, but when the alarm time was reached and the alarm sounded, nobody was around to turn off the alarm.

SOLUTION(s): The alarm will automatically turn off after 3 minutes of sound and will not sound again.

SYMPTOM: An alarm time was saved by the user via the Set Alarm button. However the user decided not to activate the alarm. The next day, the user presses the Alarm ON/OFF button to activate the alarm but KS Clock indicates “Set Alarm”.

SOLUTION(s): KS Clock alarm is a one-day alarm. It will erase any user preset alarm time after one day even if the alarm was never activated.

KUBE SYSTEMS, A DIVISION OF RAMLER INTERNATIONAL LTD.

WHAT IS COVERED AND FOR HOW LONG

If your product does not work properly because of a defect in materials or workmanship, Kube Systems, a Division of Ramler International Ltd. ("**Kube Systems**") products will, for the length of the period indicated on the chart below, which starts with the date of original purchase (the "**Limited Warranty Period**"), at its option either (a) repair your product with new or refurbished parts, or (b) replace it with a new or refurbished product. When a product or part is exchanged, any replacement item becomes your property and the replaced item becomes the property of Kube Systems. The decision to repair or replace will be made by Kube Systems.

PRODUCT OR PART NAME	PARTS LIMITED WARRANTY PERIOD	LABOR LIMITED WARRANTY PERIOD
KS Clock™ ONE (1) YEAR	ONE (1) YEAR	ONE (1) YEAR
KS Clock™ ROOM PROGRAMMER	ONE (1) YEAR	ONE (1) YEAR
KS Portable™	ONE (1) YEAR	ONE (1) YEAR
KS Portable™ CHARGING TRAY	ONE (1) YEAR	ONE (1) YEAR

During the "Parts" Limited Warranty Period, there will be no charge for parts. During the "Labor" Limited Warranty Period there will be no charge for labor. If necessary repairs are not covered by this Limited Warranty, or if a product is examined which is not in need of repair, you will be charged for the repairs or examination. You must carry-in or mail-in your product during the Limited Warranty Period. This Limited Warranty only applies to new products which were not sold "as-is," purchased and serviced either directly from Kube Systems or an authorized distributor or dealer who was authorized by Kube Systems to sell such products at the time of the original purchase.

WHO IS COVERED

This Limited Warranty is extended only to the original purchaser of a Kube Systems product, and shall not be extended to any other person or transferee.

CARRY-IN OR MAIL-IN SERVICE

If your Kube Systems product ever needs service, please return the product to your distributor or dealer. Otherwise, for carry-in or mail-in service please email us at support@kubesystems.com. You must pay any shipping charges if it is necessary to ship the product for service. Please note that shipping charges vary and may be higher for destinations outside of the United States. However, if the necessary repairs are covered under this Limited Warranty, we will pay the reasonable return shipping charges to any destination. Please be sure to save the original shipping carton(s), because a charge will be made for additional cartons. A purchase receipt is required for Limited Warranty service. Please attach a copy of your purchase receipt to this statement of Limited Warranty and put it in a safe place.

WHAT IS NOT COVERED

This Limited Warranty covers defects in material and workmanship with the following specified exceptions: (a) damage resulting from (i) improper or unreasonable use, maintenance or neglect, (ii) failure to follow operating instructions, (iii) accident, (iv) excess moisture, (v) insects, (vi) lightning, (vii) power surges, (viii) connections to improper voltage supply, (ix) unauthorized alteration or modification of original condition, (x) inadequate packing or shipping procedures, (xi) use with non-Kube Systems products, (xii) modification or adaptation to enable a Kube Systems product to operate in any particular country, (xiii) service performed by anyone who is not an authorized representative of Kube Systems, (xiv) fire, flood, earthquake or other external causes, or (xv) acts of God or force majeure; (b) loss of, damage to or corruption of stored data; (c) repair of products damaged by any modification or adaptation to enable a Kube Systems product to operate in any particular country; (d) damage to, or deterioration of, any accessory or decorative surface; (e) any Kube Systems product on which the serial number has been effaced, modified or removed; or (f) Kube Systems products purchased from unauthorized distributors or dealers. This Limited Warranty covers only actual defects within the product itself, and does not cover the cost of installation or removal from a fixed installation, normal setup or adjustments, claims based on misrepresentation by the seller or performance variations resulting from installation-related circumstances.

LIMITATION ON IMPLIED WARRANTIES

KUBE SYSTEMS SHALL NOT BE LIABLE FOR INCIDENTAL OR CONSEQUENTIAL DAMAGES RESULTING FROM THE USE OF ANY KUBE SYSTEMS PRODUCT, OR ARISING OUT OF ANY BREACH OF THIS LIMITED WARRANTY. TO THE EXTENT PERMITTED BY APPLICABLE LAW, KUBE SYSTEMS DISCLAIMS ANY AND ALL STATUTORY OR IMPLIED WARRANTIES, WRITTEN OR ORAL, INCLUDING, WITHOUT LIMITATION, WARRANTIES OF MERCHANTABILITY, FITNESS FOR A PARTICULAR PURPOSE, TITLE, NON-INFRINGEMENT AND WARRANTIES AGAINST HIDDEN OR LATENT DEFECTS. IF KUBE SYSTEMS CANNOT LAWFULLY DISCLAIM STATUTORY OR IMPLIED WARRANTIES, THEN TO THE EXTENT PERMITTED BY LAW, ALL SUCH WARRANTIES SHALL BE LIMITED IN DURATION TO THE DURATION OF THIS LIMITED WARRANTY. THE MAXIMUM LIABILITY OF KUBE SYSTEMS SHALL NOT EXCEED THE ACTUAL PURCHASE PRICE PAID BY YOU FOR THE PRODUCT.

OTHER LEGAL RIGHTS

This Limited Warranty gives you specific legal rights, and you also may have other rights that vary from place to place. Some places do not allow limitations on implied warranties or the exclusion or limitation of incidental or consequential damages, so the above limitations or exclusions may not apply to you.

PARTS AND SERVICE WHICH ARE NOT COVERED BY THIS LIMITED WARRANTY ARE YOUR RESPONSIBILITY.

INFORMATION

If you have questions regarding the installation or operation of this product, please e-mail us at support@kubesystems.com.





<http://www.kubesystems.com>